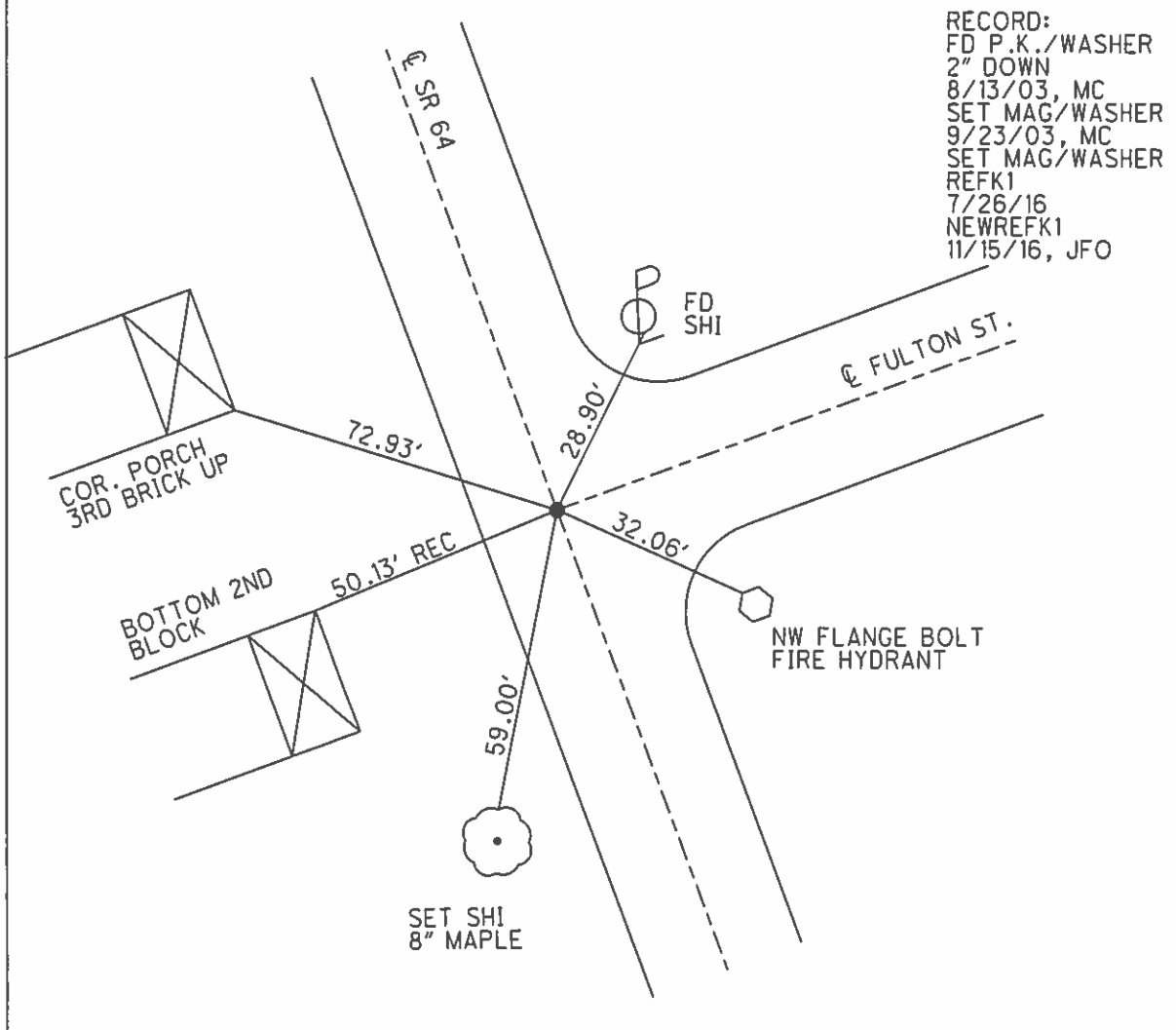
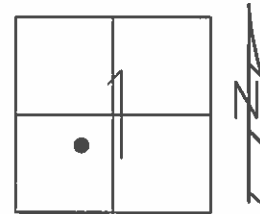


O.D.O.T. DISTRICT 2 SURVEY OFFICE (USE ONLY)

PERSONNEL _____ REFERENCE NO. 1 K SHEET 13 OF 22
 NOTES RHOADES DATE 7-26-16 ROUTE SR 64
 H.C. O' DONNELL WEATHER SUNNY COUNTY FULTON
 R.C. KEFFER TEMP. 76° TOWNSHIP FULTON
 SECTION 1
 T 7 N R 8 E

TYPE MONUMENT MAG/WASHER
~~ON SURFACE~~ - BELOW ON
 LEFT - ☉ PAV'T - RIGHT ON
15' TO LT EDGE PAVEMENT
 S.L.M. 62+90
 GRID: NOTHING: 704977.758 EASTING: 1587180.537



RECORD:
 FD P.K./WASHER
 2" DOWN
 8/13/03, MC
 SET MAG/WASHER
 9/23/03, MC
 SET MAG/WASHER
 REFK1
 7/26/16
 NEWREFK1
 11/15/16, JFO

O.D.O.T. DISTRICT 2 SURVEY OFFICE

PERSONNEL

REFERENCE NO. 1-K

SHEET 11 OF 18

NOTES CANTERBURY

H.C. NUHFER

R.C. BRUMBAUGH

DATE 8-13-03

WEATHER FAIR

TEMP. + 78°

ROUTE SR 64

COUNTY FULTON

TOWNSHIP FULTON

SECTION 1

T 7 N R 8 E

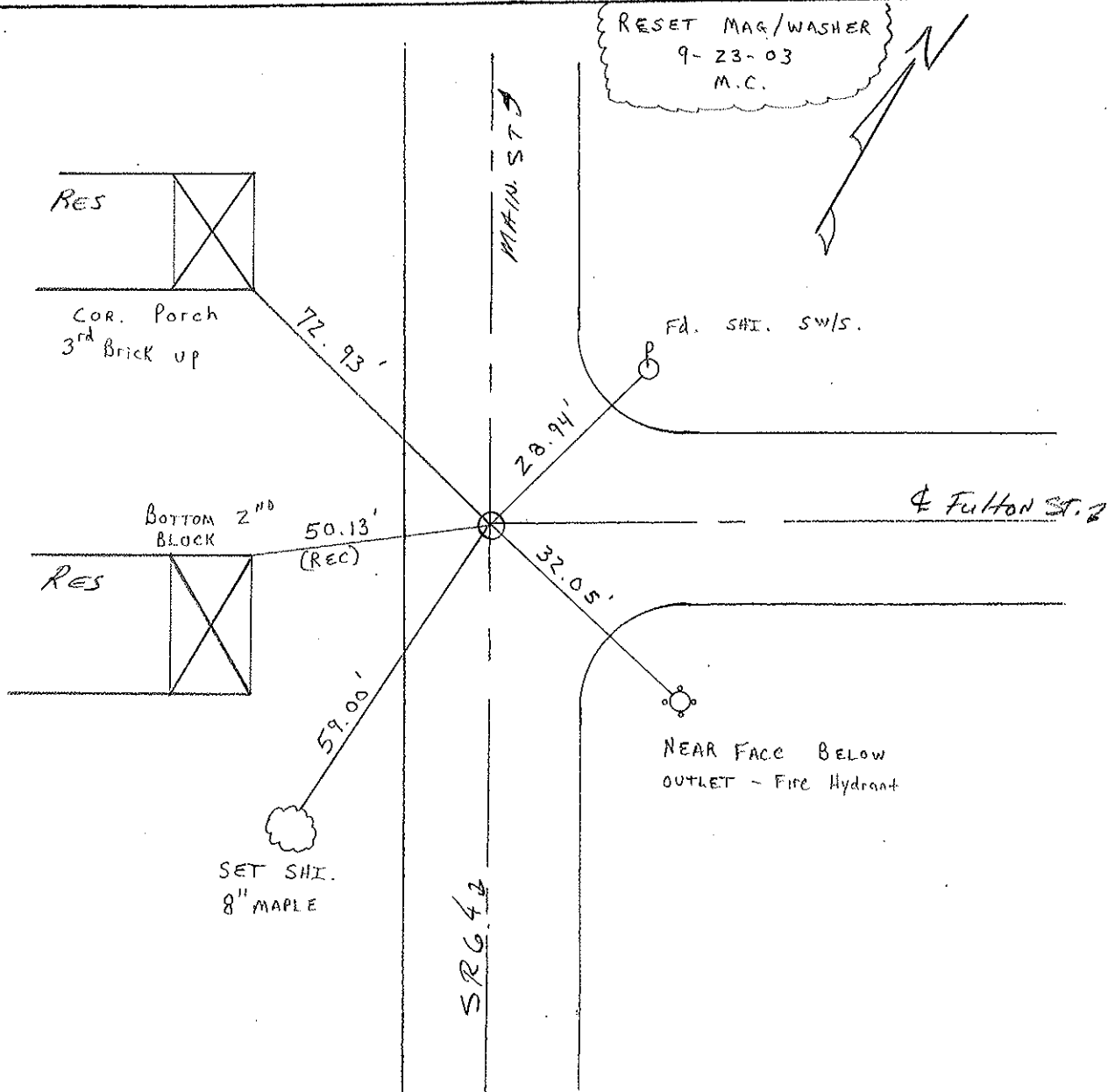
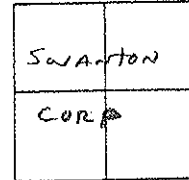
TYPE MONUMENT PK. NAIL / WASHER

ON SURFACE - BELOW 2" DOWN

LEFT - ℄ PAV'T. - RIGHT ON ℄

15' TO LT EDGE PAVEMENT

S.L.M. 62+90



O.D.O.T. DISTRICT 2 SURVEY OFFICE

PERSONNEL

REFERENCE NO. 1K

SHEET 9 OF 16

NOTES 1. Stone

H.C. D. Curtis

DATE 1 April 88

ROUTE SR#64

R.C. J. Housholder

WEATHER Cloudy

COUNTY Fulton

TEMP. 50°

TOWNSHIP Fulton

SECTION _____

T _____ R _____

TYPE MONUMENT PK Nail

ON SURFACE - BELOW Surface

LEFT - & PAV'T. - RIGHT _____

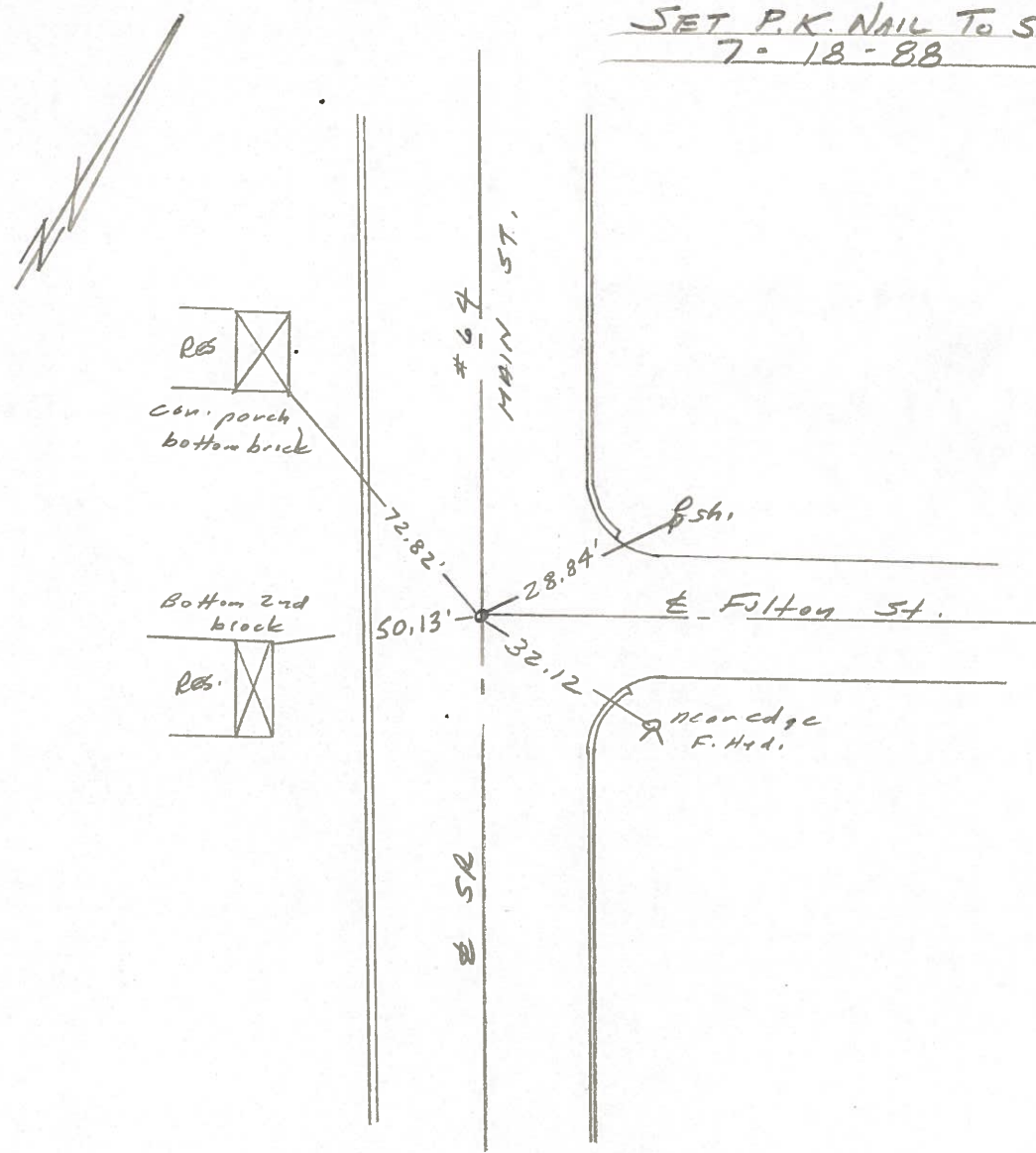
_____ TO _____ EDGE PAVEMENT

S.L.M. 62+90

SWANTON	
CORP.	



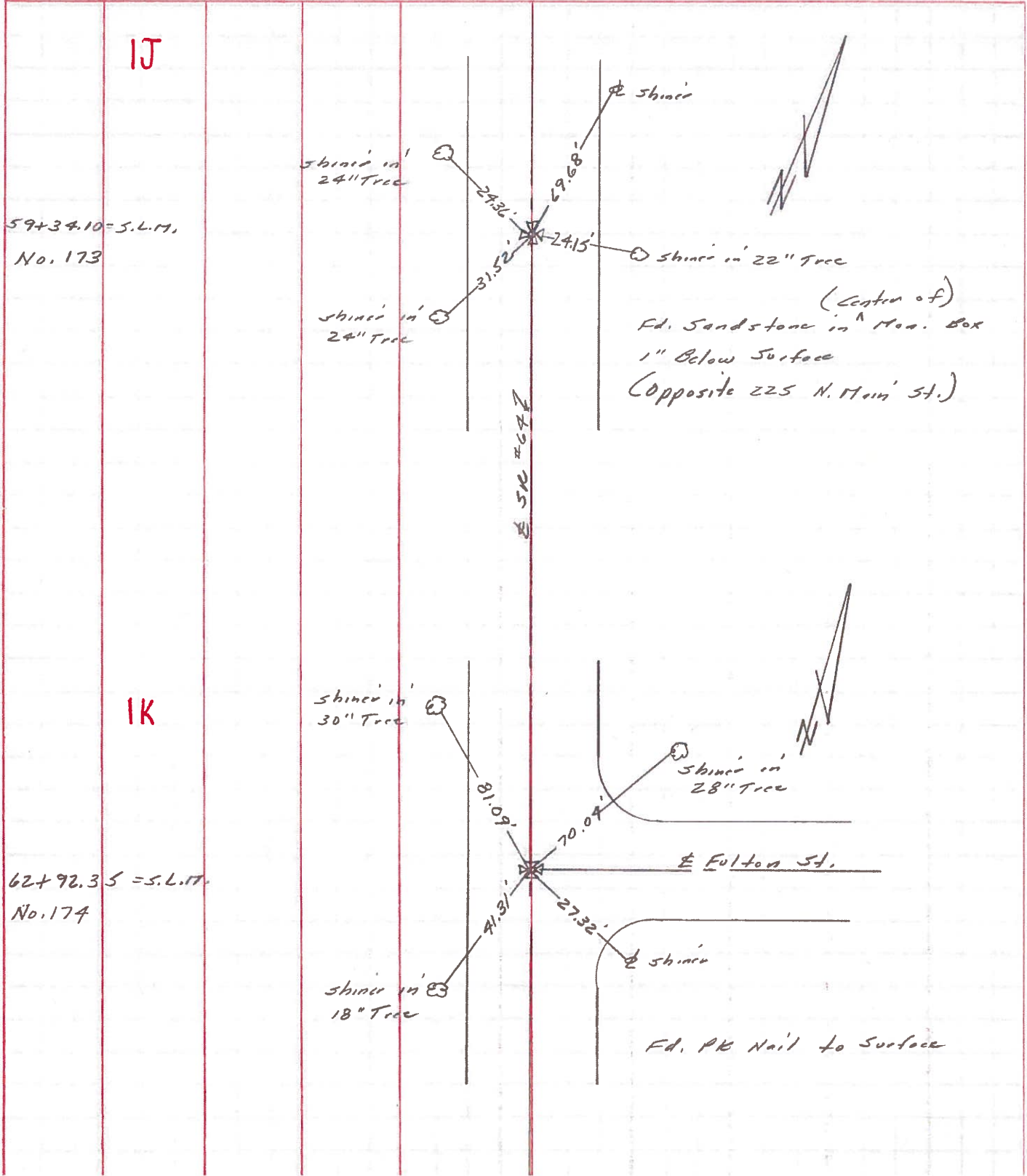
SET P.K. NAIL TO SURFACE
7-18-88



PERSONNEL	TITLE	PERSONNEL	TITLE	COUNTY	DATE
Stone				Fulton	22 March 73
Hichalak				S. R. #64	WEATHER Cool
Jenna				SEC. Swanton	TEMP. 33°
Curtis					

DESCRIPTION References to Control Points JOB NO. _____

LEFT CENTER LINE RIGHT



PERSONNEL	TITLE	PERSONNEL	TITLE	COUNTY	DATE
Denno				Fulton	June 3, 1966
Curtis				S. R. 64	WEATHER Sunny
Oney				SEC.	TEMP. 75°
Granata					

DESCRIPTION Monument Res S.R. 64 Swanton JOB NO. _____

