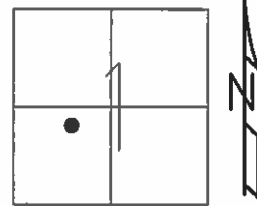


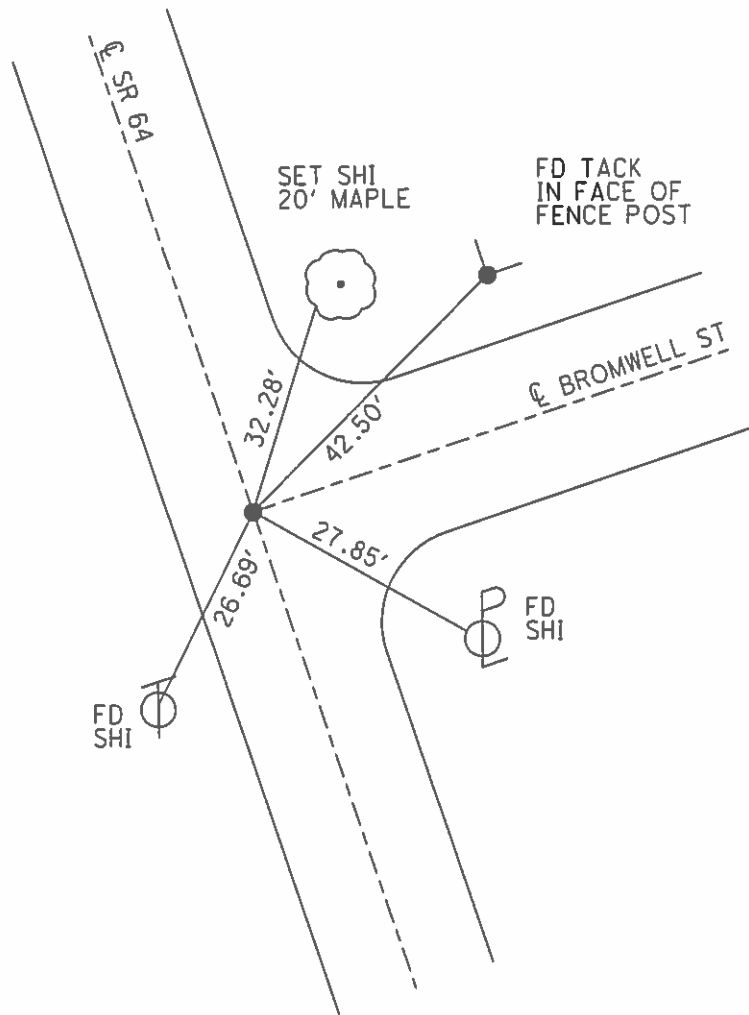
O.D.O.T. DISTRICT 2 SURVEY OFFICE (USE ONLY)

PERSONNEL _____ REFERENCE NO. 1 L SHEET 14 OF 22
 NOTES RHOADES DATE 7-26-16 ROUTE SR 64
 H.C. O' DONNELL WEATHER SUNNY COUNTY FULTON
 R.C. KEFFER TEMP. 76° TOWNSHIP FULTON
 SECTION 1
 T 7 N R 8 E

TYPE MONUMENT MAG/WASHER
 ON SURFACE - ~~BELOW~~ ON _____
 LEFT - ☉ PAV'T - RIGHT ON _____
 - TO - EDGE PAVEMENT
 S.L.M. 67+43
 GRID: NOTHING: 705382.514 EASTING: 1586975.077



RECORD:
 FD P.K./WASHER
 8/13/03, MC
 SET MAG/WASHER
 9/23/03, MC
 FD MAG/WASHER
 REFL1
 7/26/16
 SET MAG/WASHER
 NEWREFL1
 11/15/16, JFO



O.D.O.T. DISTRICT 2 SURVEY OFFICE

PERSONNEL

REFERENCE NO. 1-L

SHEET 12 OF 18

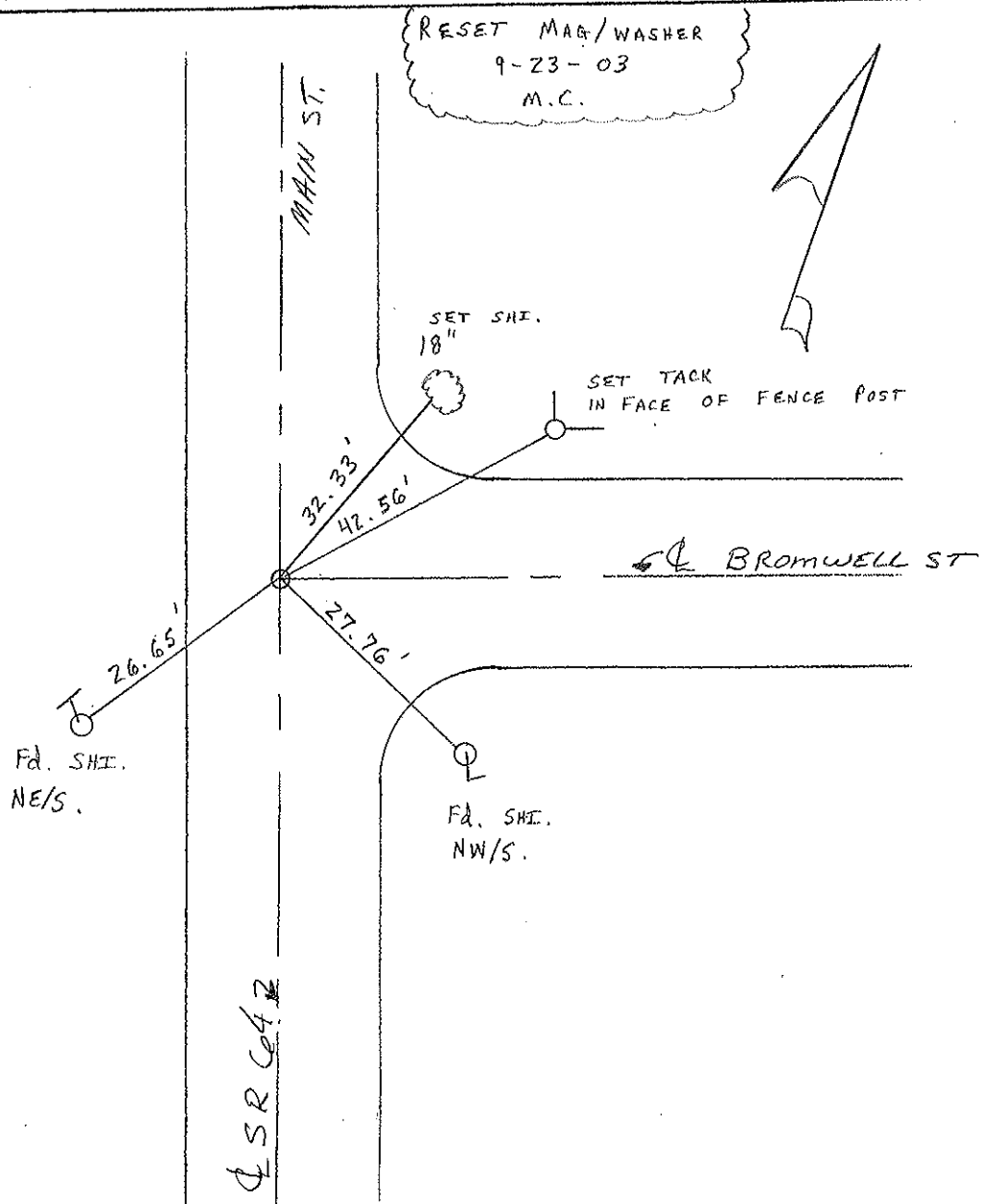
NOTES CANTERBURY
 H.C. NUHFER
 R.C. BRUMBAUGH

DATE 8-13-03
 WEATHER FAIR
 TEMP. +78°

ROUTE SR Co 4
 COUNTY FULTON
 TOWNSHIP FULTON
 SECTION 1
T 2 X L R 8 E

TYPE MONUMENT PK # NAIL / WASHER
 ON SURFACE - BELOW SURFACE
 LEFT - Q PAV'T. - RIGHT 0.2 RT Q
 TO EDGE PAVEMENT
 S.L.M. 0.7 + 43

SWANTON	
CORP	



O.D.O.T. DISTRICT 2 SURVEY OFFICE

PERSONNEL

REFERENCE NO. 1L

SHEET 10 OF 16

NOTES 1. Stone

H.C. D. Curtis

R.C. J. Householder

DATE 1 April 88

WEATHER Cloudy

TEMP. 50°

ROUTE SR #64

COUNTY Fulton

TOWNSHIP Fulton

SECTION _____

T _____ R _____

TYPE MONUMENT PK Nail

ON SURFACE - BELOW Surface

LEFT - \odot PAV'T. - RIGHT _____

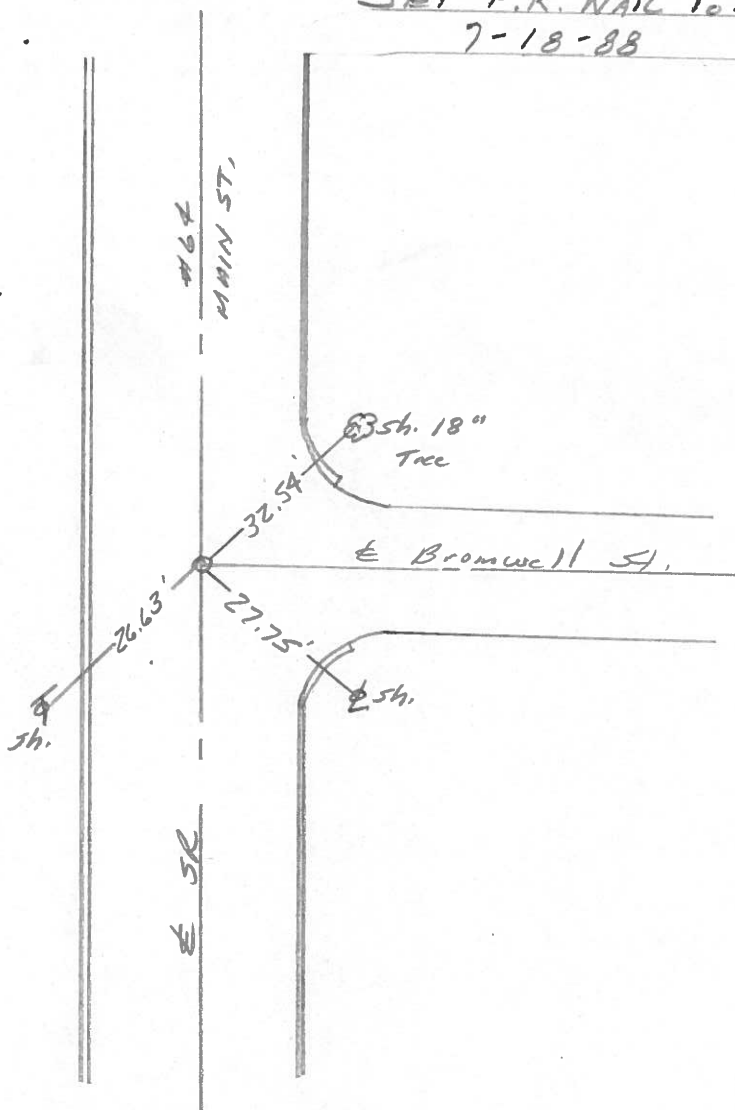
_____ TO _____ EDGE PAVEMENT

S.L.M. 67+43

SWANTON	
CORP	

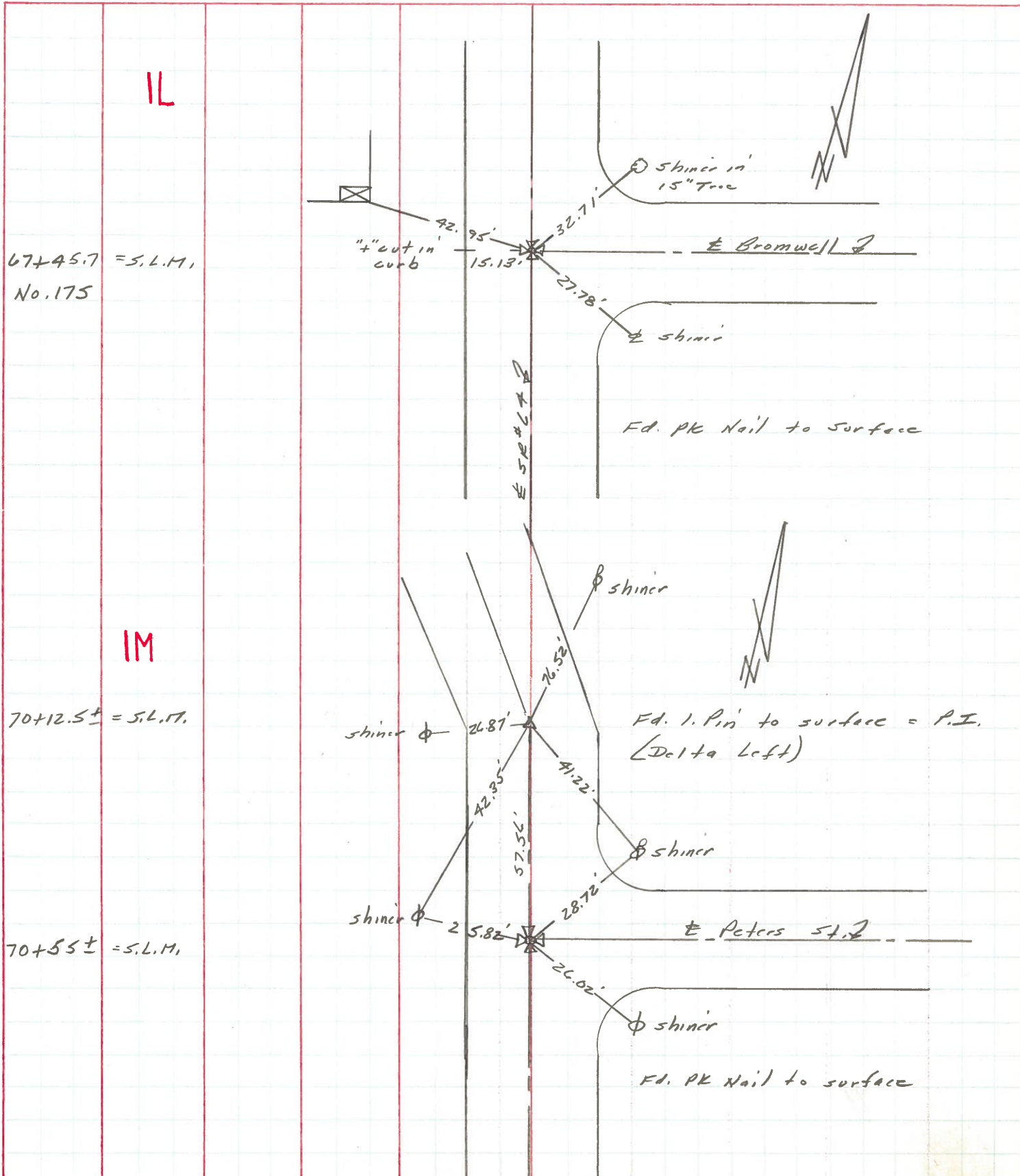


SET P.K. NAIL TO SURFACE
7-18-88



PERSONNEL	TITLE	PERSONNEL	TITLE	COUNTY	DATE	WEATHER	TEMP.
Stone				Fulton	22 March 73	Cool	35°
Michalak				S. R. #64			
Denno				SEC. Swanton			
Curtis							

DESCRIPTION References to Control Points JOB NO. _____



PERSONNEL	TITLE	PERSONNEL	TITLE	COUNTY	DATE
Denno				Fulton	June 3, 1966
Curtis				S. R. 64	WEATHER Sunny
Oney				SEC.	TEMP. 75°
Granata					

DESCRIPTION Monument Res S.R. 64 Swanton JOB NO. _____

