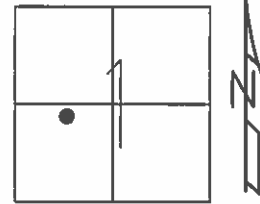


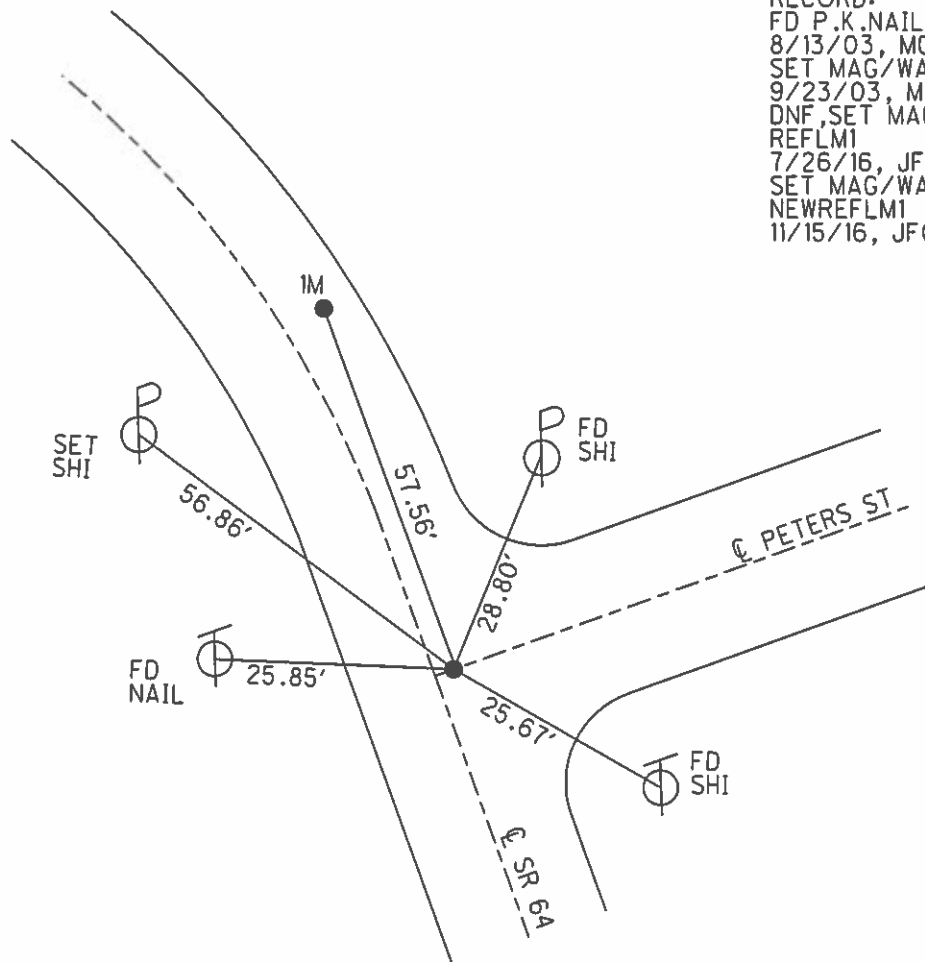
O.D.O.T. DISTRICT 2 SURVEY OFFICE (USE ONLY)

PERSONNEL _____ REFERENCE NO. 1 LM SHEET 15 OF 22
 NOTES RHOADES DATE 7-26-16 ROUTE SR 64
 H.C. O' DONNELL WEATHER SUNNY COUNTY FULTON
 R.C. KEFFER TEMP. 76° TOWNSHIP FULTON
 SECTION 1
 T 7 N R 8 E

TYPE MONUMENT MAG/WASHER
 ON SURFACE - ~~BELOW~~ ON _____
~~LEFT~~ - Q PAV'T - RIGHT 1'
12.3' TO LT EDGE PAVEMENT
 S.L.M. 70+47 1586838.148
 GRID: NOTHING: 705652.403 EASTING:



RECORD:
 FD P.K.NAIL
 8/13/03, MC
 SET MAG/WASHER
 9/23/03, MC
 DNF, SET MAG/WASHER
 REFLM1
 7/26/16, JFO
 SET MAG/WASHER
 NEWREFLM1
 11/15/16, JFO



O.D.O.T. DISTRICT 2 SURVEY OFFICE

PERSONNEL

REFERENCE NO. 1-M

SHEET 13 OF 18

NOTES CANTERBURY

H.C. NUHFER

R.C. BRUMBAUGH

DATE 8-13-03

WEATHER FAIR

TEMP. +78°

ROUTE SR 64

COUNTY Fulton

TOWNSHIP Fulton

SECTION 1

T 7 N R 8 E

TYPE MONUMENT A - PK NAIL ; B - RR SPIKE 5m.
 ON SURFACE - BELOW SURFACE

LEFT - ☉ PAV'T. - RIGHT A = 1' RT ☉ B = 4.6' RT ☉

A" 12.3' TO LT. EDGE PAVEMENT

S.L.M. A = 70+47 B = 71+05

SWANTON	
CORP	



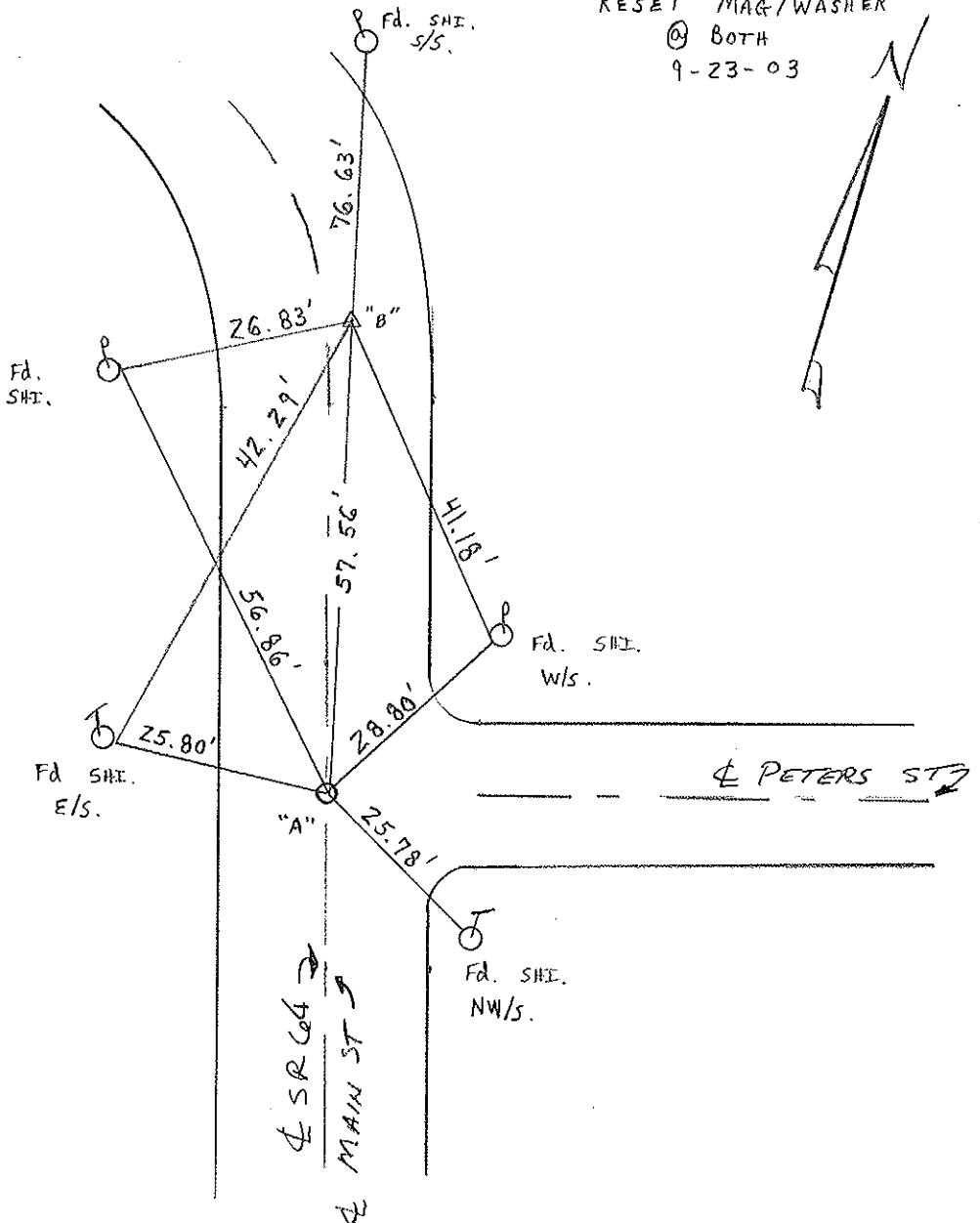
NOTE: HISTORY

A - PK NAIL 3" DEEP
B - 1 PIN 3" DEEP

RESET MAG/WASHER

@ BOTH

9-23-03



O.D.O.T. DISTRICT 2 SURVEY OFFICE

PERSONNEL _____

REFERENCE NO. 1M

SHEET 11 OF 16

NOTES 1. Stone

H.C. D. Curtis

R.C. J. Householder

DATE 1 April 88

WEATHER Cloudy

TEMP. 50°

ROUTE SR #64

COUNTY Fulton

TOWNSHIP Fulton

SECTION _____

T _____ R _____

TYPE MONUMENT "A" = PK Nail
"B" = 1. Pin
 ON SURFACE - BELOW "A" = 3" deep "B" = 3" deep
 LEFT - ☉ PAV'T. - RIGHT _____
 _____ TO _____ EDGE PAVEMENT
 S.L.M. A = 70+47 B = 71+05

SWANTON	
CORP	

