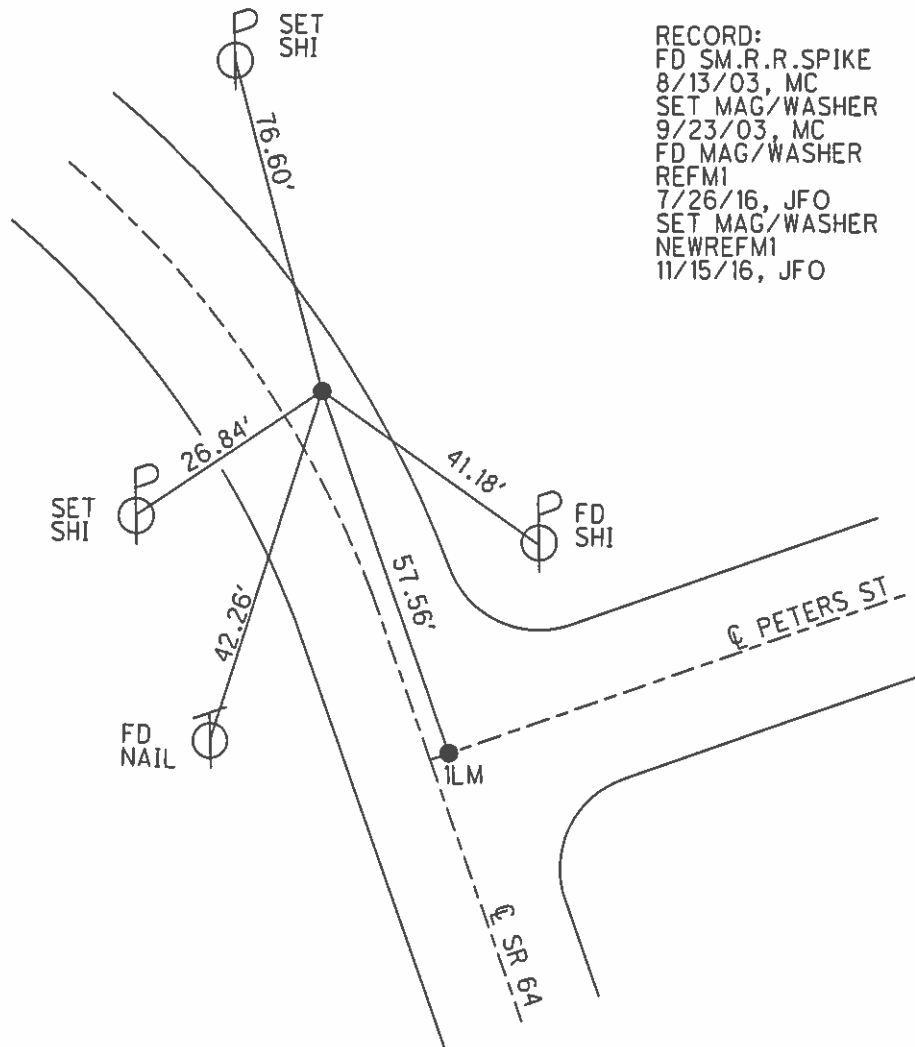
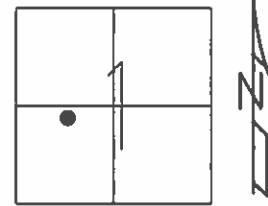


O.D.O.T. DISTRICT 2 SURVEY OFFICE (USE ONLY)

PERSONNEL \_\_\_\_\_ REFERENCE NO. 1 M SHEET 16 OF 22  
 NOTES RHOADES DATE 7-26-16 ROUTE SR 64  
 H.C. O' DONNELL WEATHER SUNNY COUNTY FULTON  
 R.C. KEFFER TEMP. 76° TOWNSHIP FULTON  
 SECTION 1  
 T 7 N R 8 E

TYPE MONUMENT MAG/WASHER  
 ON SURFACE - ~~BELOW~~ ON \_\_\_\_\_  
~~LEFT~~ - CL PAV'T - RIGHT 4.6'  
 - TO - EDGE PAVEMENT  
 S.L.M. 71+05

GRID: NOTHING: 705703.745 EASTING: 1586812.057



RECORD:  
 FD SM.R.R.SPIKE  
 8/13/03, MC  
 SET MAG/WASHER  
 9/23/03, MC  
 FD MAG/WASHER  
 REFM1  
 7/26/16, JFO  
 SET MAG/WASHER  
 NEWREFM1  
 11/15/16, JFO

# O.D.O.T. DISTRICT 2 SURVEY OFFICE

PERSONNEL

REFERENCE NO. 1-M

SHEET 13 OF 18

NOTES CANTERBURY

H.C. NUHFER

R.C. BRUMBAUGH

DATE 8-13-03

WEATHER FAIR

TEMP. +78°

ROUTE SR 64

COUNTY Fulton

TOWNSHIP Fulton

SECTION 1

T 7 N R 8 E

TYPE MONUMENT 'A' PK NAIL ; 'B' RR SPIKE 5m.

ON SURFACE - BELOW SURFACE

LEFT - ☉ PAV'T. - RIGHT A= 1' RT ☉ B= 4.6' RT ☉

'A' 12.3' TO LT. EDGE PAVEMENT

S.L.M. A= 70+47 B= 71+05

SWANTON	
CORP	



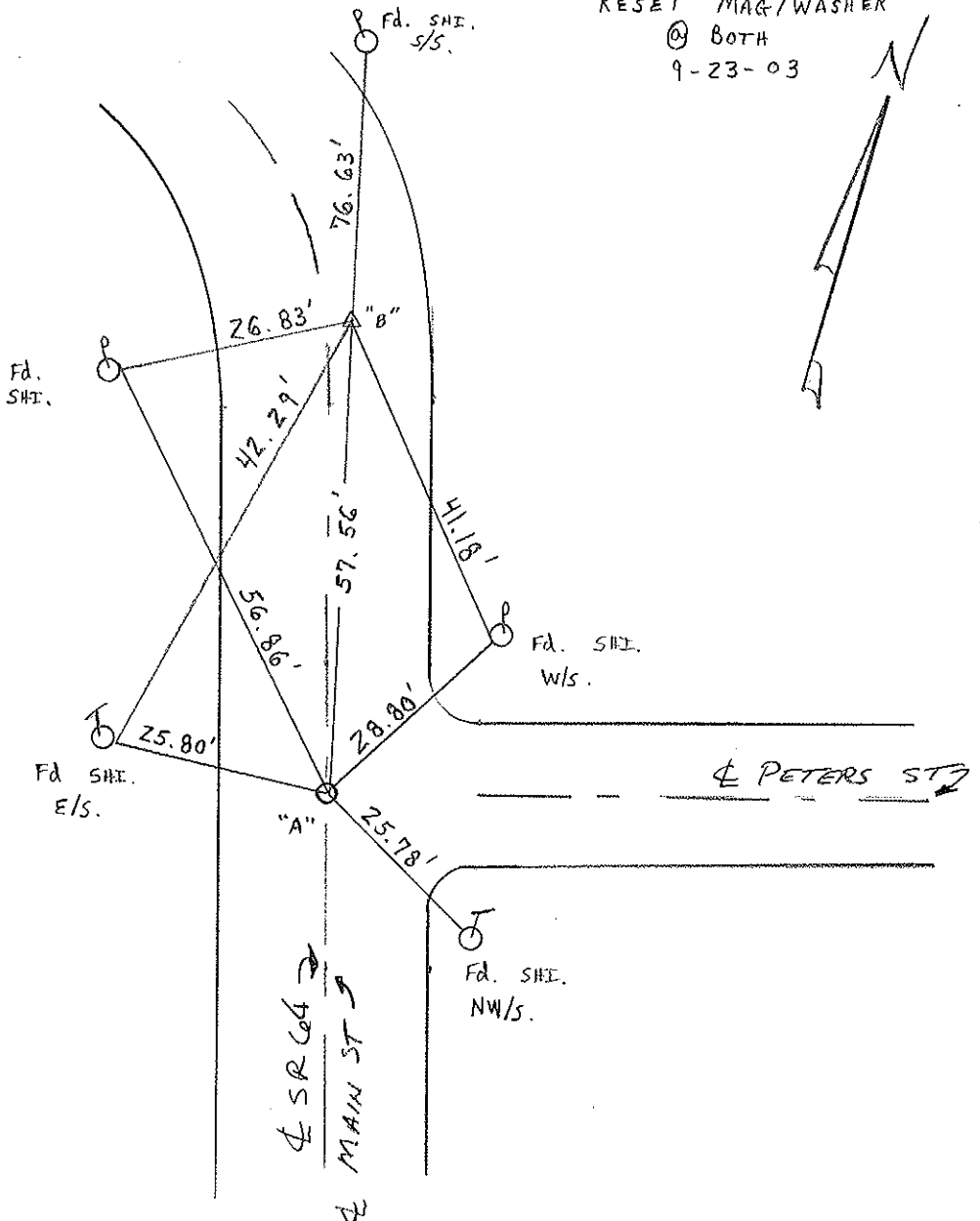
NOTE: HISTORY

'A' PK NAIL 3" DEEP  
'B' 1 PIN 3" DEEP

RESET MAG/WASHER

@ BOTH

9-23-03



# O.D.O.T. DISTRICT 2 SURVEY OFFICE

PERSONNEL \_\_\_\_\_

REFERENCE NO. 1M

SHEET 11 OF 16

NOTES 1. Stone

H.C. D. Curtis

R.C. J. Householder

DATE 1 April 88

WEATHER Cloudy

TEMP. 50°

ROUTE SR #64

COUNTY Fulton

TOWNSHIP Fulton

SECTION \_\_\_\_\_

T \_\_\_\_\_ R \_\_\_\_\_

TYPE MONUMENT "A" = PK Nail  
"B" = 1. Pin

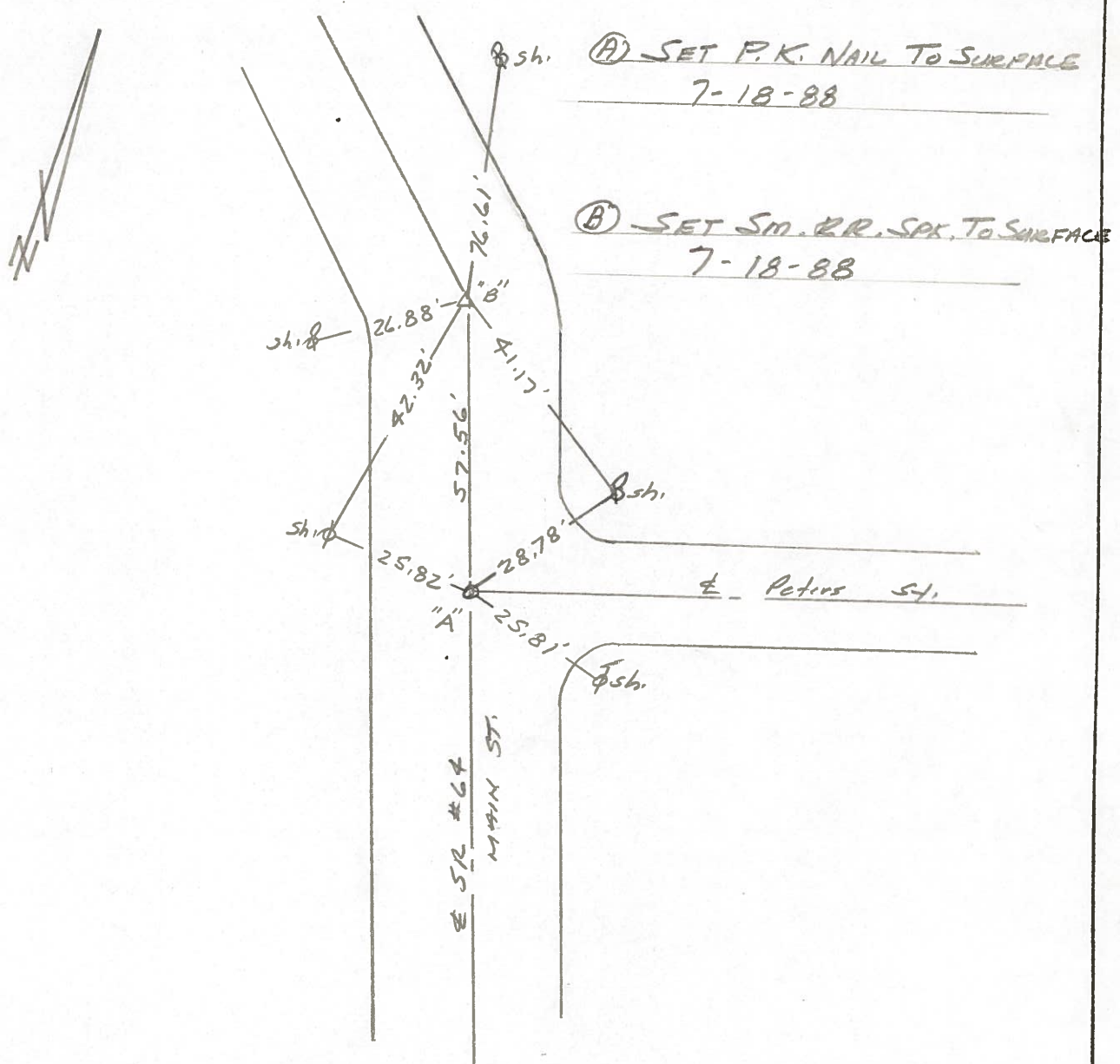
ON SURFACE - BELOW "A" = 3" deep "B" = 3" deep

LEFT - ☉ PAV'T. - RIGHT \_\_\_\_\_

\_\_\_\_\_ TO \_\_\_\_\_ EDGE PAVEMENT

S.L.M. A = 70+47 B = 71+05

SWANTON	
CORP	



PERSONNEL Stone TITLE \_\_\_\_\_ PERSONNEL Michalak TITLE \_\_\_\_\_ COUNTY Fulton DATE 22 March 73  
Deno \_\_\_\_\_ Curtis \_\_\_\_\_ S. R. #64 WEATHER Cool  
 SEC. Swanton TEMP. 35°

DESCRIPTION References to Control Points JOB NO. \_\_\_\_\_  
 LEFT CENTER LINE RIGHT

