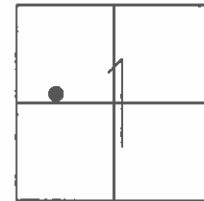


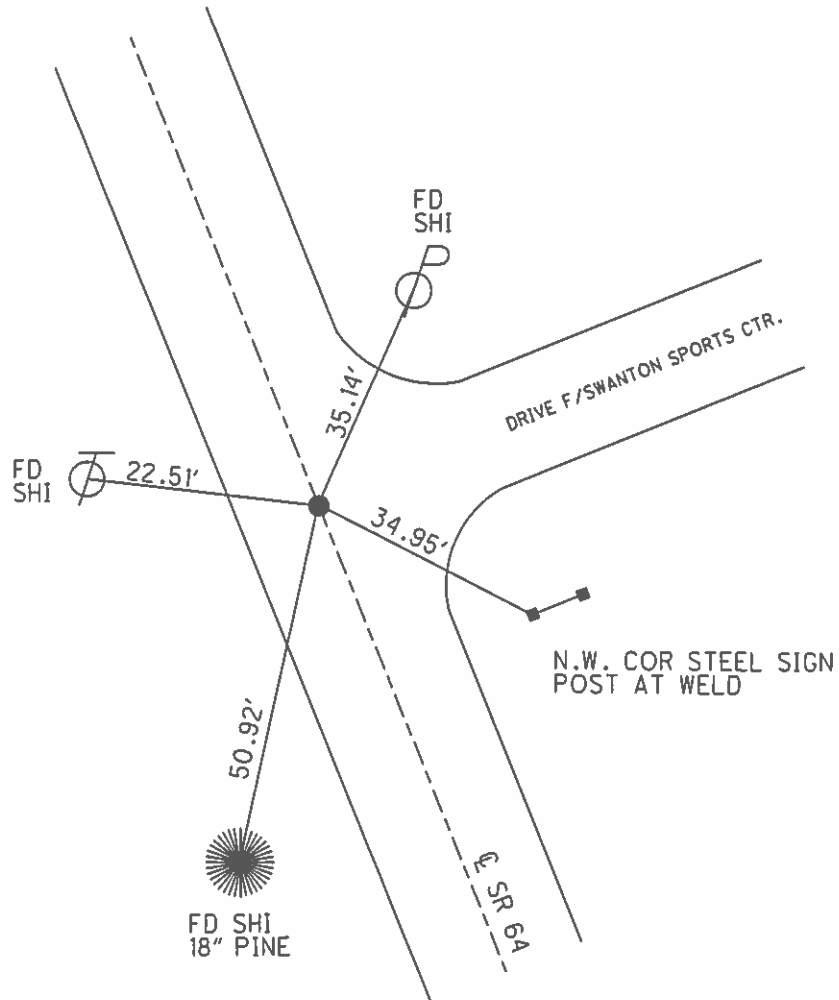
O.D.O.T. DISTRICT 2 SURVEY OFFICE (USE ONLY)

PERSONNEL _____ REFERENCE NO. 2 A SHEET 19 OF 22
 NOTES O' DONNELL DATE 7-26-16 ROUTE SR 64
 H.C. RHOADES WEATHER SUNNY COUNTY FULTON
 R.C. KEFFER TEMP. 84° TOWNSHIP FULTON
 _____ SECTION 1
 _____ T 7 N R 8 E

TYPE MONUMENT MAG/WASHER
 ON SURFACE - ~~BELOW~~ ON
 LEFT - ☉ PAV'T - RIGHT ON
- TO - EDGE PAVEMENT
 S.L.M. 78+54
 GRID: NOTHING: 706307.952 EASTING: 1586367.828



RECORD:
 FD R.R. SPIKE
 8/13/03, MC
 SET MAG/WASHER
 9/23/03, MC
 FD MAG/WASHER
 REFA2
 7/26/16, JFO
 SET MAG/WASHER
 NEWREFA2
 11/15/16, JFO



O.D.O.T. DISTRICT 2 SURVEY OFFICE

PERSONNEL

REFERENCE NO. 2-A

SHEET 15 OF 18

NOTES CANTERBURY

H.C. NUHFER

R.C. BRUMBAUGH

DATE 8-13-03

WEATHER FAIR

TEMP. +78°

ROUTE SR 64

COUNTY Fulton

TOWNSHIP Fulton

SECTION 1

T 7 N R 8 E

TYPE MONUMENT R.R. SPK

ON SURFACE - BELOW 4" DOWN

LEFT - ☉ PAV'T. - RIGHT ON ☉

TO EDGE PAVEMENT

S.L.M. 78+54

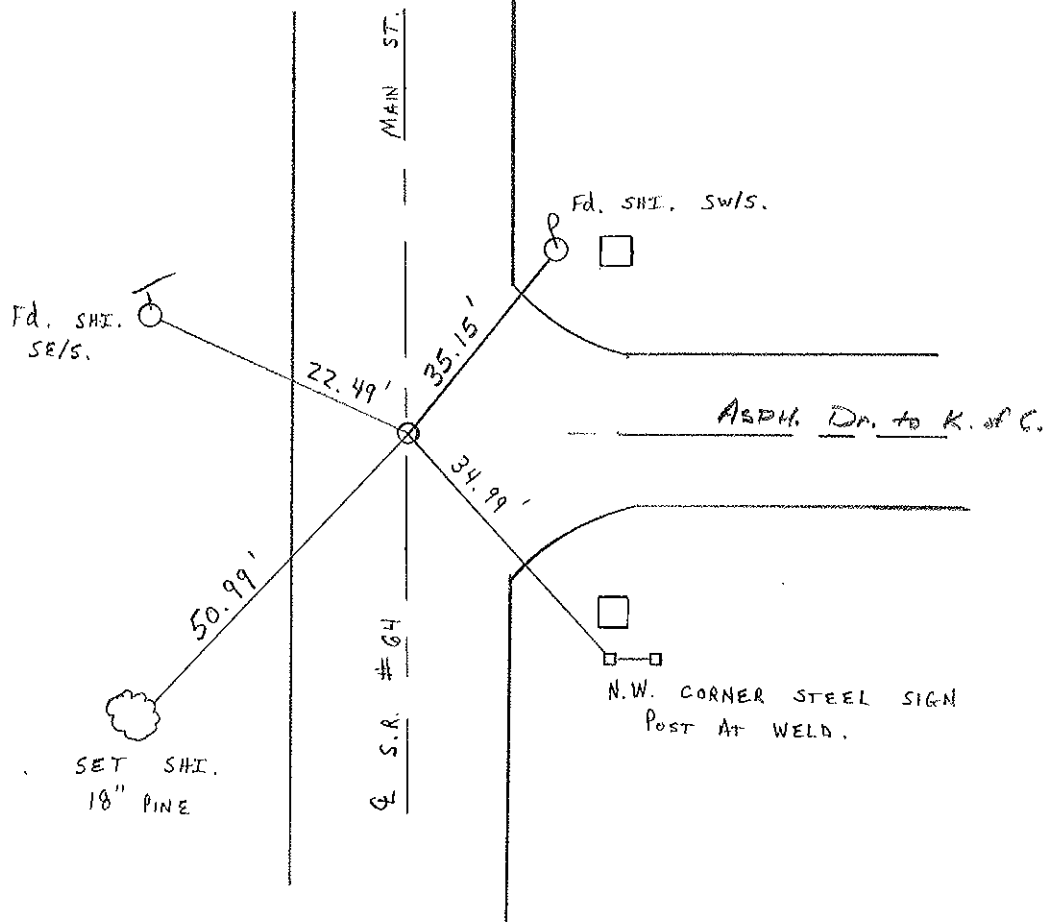
SWANTON	
CORP	



NOTE:

PK NAIL OVER RR SPK
4" DEEP 1988.

RESET MAG/WASHER
9-23-03
M.C.



O.D.O.T. DISTRICT 2 SURVEY OFFICE

PERSONNEL

REFERENCE NO. 2A

SHEET 13 OF 16

NOTES 1. Stone

H.C. D. Curtis

R.C. J. Housholder

DATE 6 April '88

WEATHER Cloudy

TEMP. 60°

ROUTE SR#64

COUNTY Fulton

TOWNSHIP Fulton

SECTION _____

T _____ R _____

TYPE MONUMENT RR 5pk.

ON SURFACE - BELOW 4" deep

LEFT - & PAV'T. - RIGHT _____

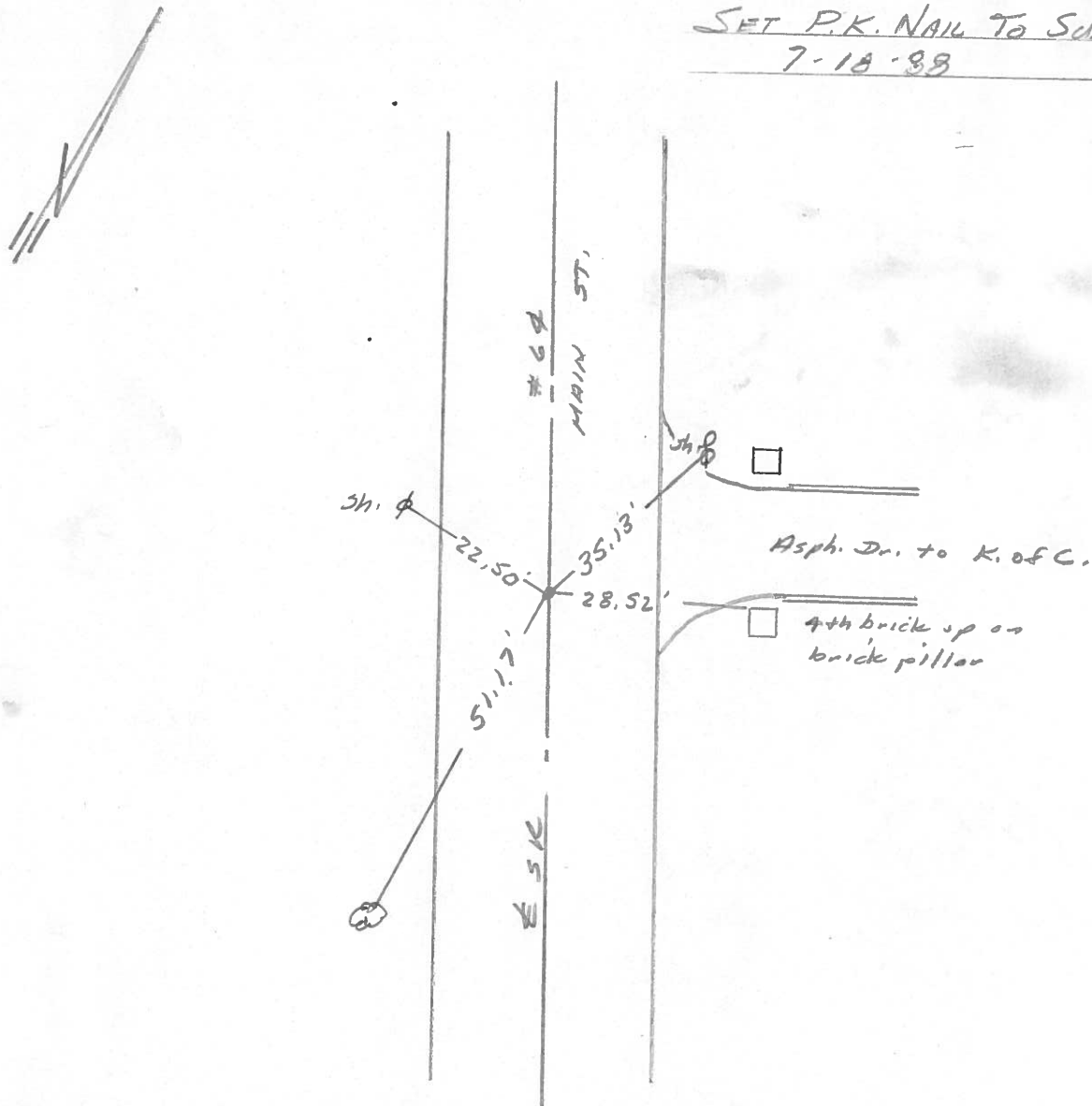
_____ TO _____ EDGE PAVEMENT

S.L.M. 78+54

SWANTON	
CORP	



SET P.K. NAIL TO SURFACE
7-18-88

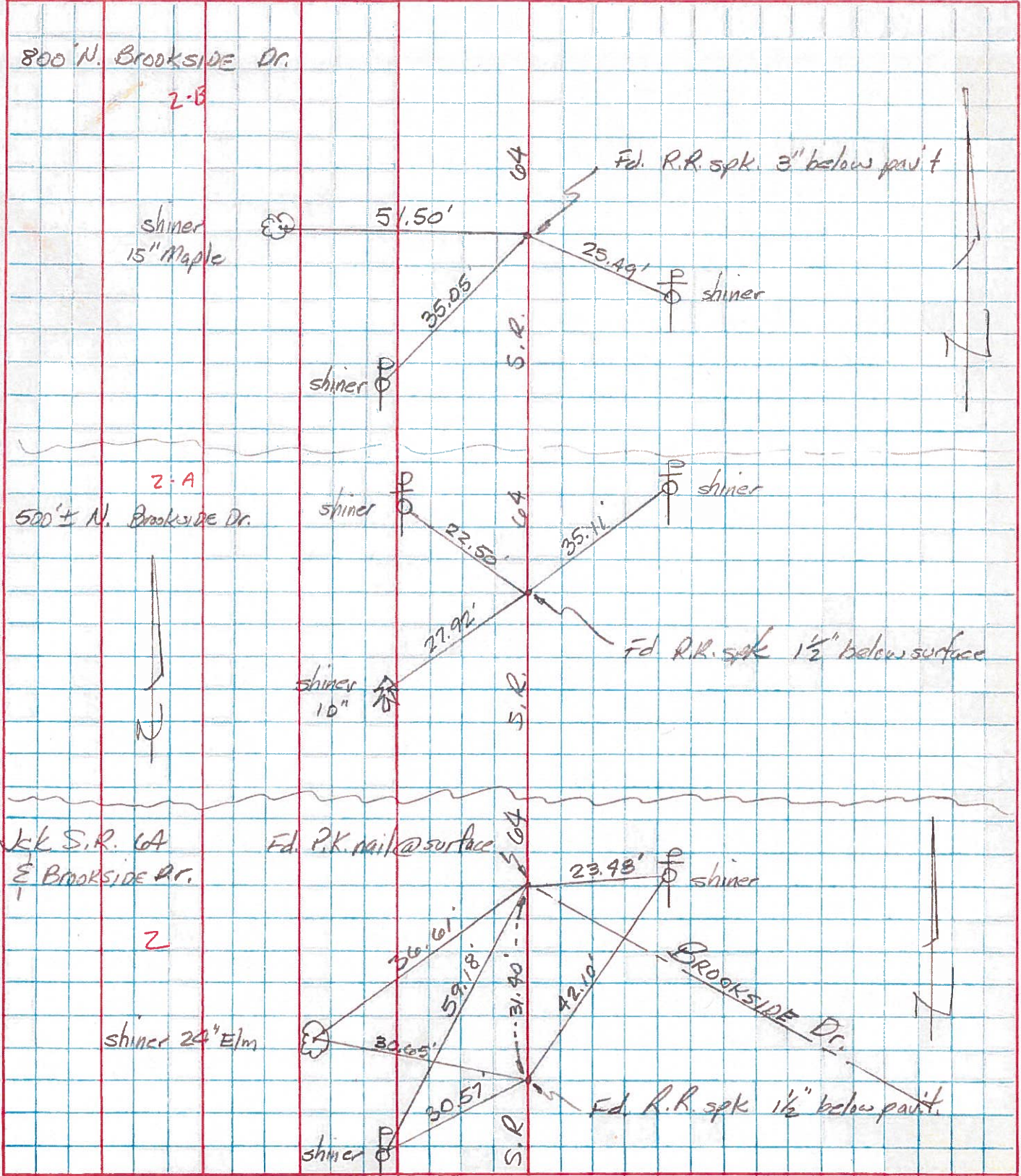


S.R. 64 FULTON

SHEET NO. 10

PERSONNEL	TITLE	PERSONNEL	TITLE	COUNTY	DATE	WEATHER	TEMP.
Tomsic		Granata		Fulton	Aug. 6-73		
Vanvo				S. R. 64			
Neuffer				SEC. FULTON TWP			
Boyle							

DESCRIPTION _____ LEFT _____ CENTER LINE _____ RIGHT _____ JOB NO. _____



PERSONNEL	TITLE	PERSONNEL	TITLE	COUNTY	DATE	WEATHER	TEMP.
Stone				Fulton	22 March 73	Cool	35°
Michalok				S. R. #64			
Denno				SEC. Swanton			
Curtis							

DESCRIPTION References to Control Points JOB NO. _____

LEFT CENTER LINE RIGHT

