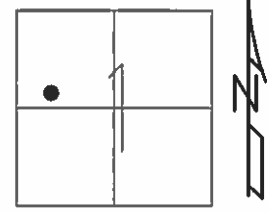


O.D.O.T. DISTRICT 2 SURVEY OFFICE (USE ONLY)

PERSONNEL _____ REFERENCE NO. 2 B SHEET 20 OF 22

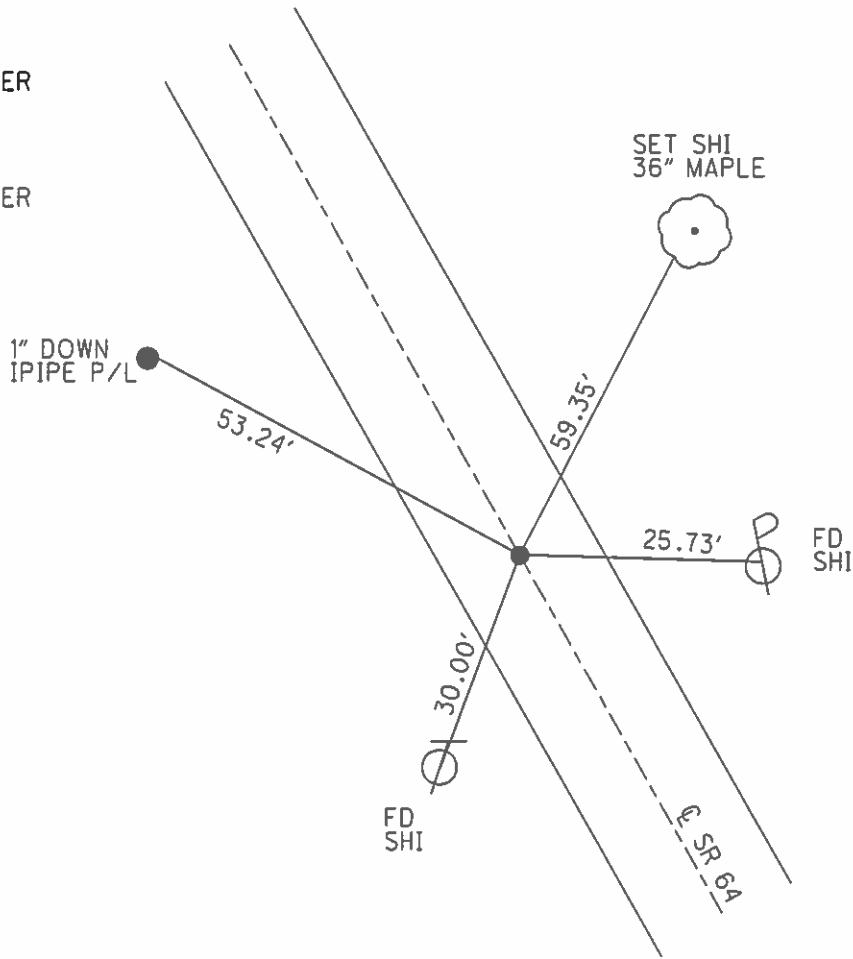
NOTES RHOADES DATE 7-26-16 ROUTE SR 64
 H.C. O' DONNELL WEATHER SUNNY COUNTY FULTON
 R.C. KEFFER TEMP. 84° TOWNSHIP FULTON
 _____ SECTION 1
 _____ T 7 N R 8 E

TYPE MONUMENT P.K.NAIL
 ON SURFACE - ~~BELOW~~ ON _____
 LEFT - ☉ PAV'T - ~~RIGHT~~ _____
 _____ TO _____ EDGE PAVEMENT
 S.L.M. 81+54



GRID: NOTHING: 706553.272 EASTING: 1586195.076

RECORD:
 FD R.R.SPIKE
 4" DOWN
 8/13/03, MC
 SET MAG/WASHER
 9/23/03, MC
 FD P.K.NAIL
 REFB2
 7/26/16, JFO
 SET MAG/WASHER
 NEWREFB2
 11/18/16, JFO



O.D.O.T. DISTRICT 2 SURVEY OFFICE

PERSONNEL

REFERENCE NO. 2-B

SHEET 16 OF 18

NOTES CANTERBURY

H.C. NUHFER

R.C. BRUMBAUGH

DATE 8-13-03

WEATHER FAIR

TEMP. +78'

ROUTE SR64

COUNTY Fulton

TOWNSHIP Fulton

SECTION 1

T. 7 N R. 8 E

TYPE MONUMENT RR SPK

ON SURFACE - BELOW 4" DOWN

LEFT - CL PAV'T. - RIGHT 1' LT CL

TO EDGE PAVEMENT

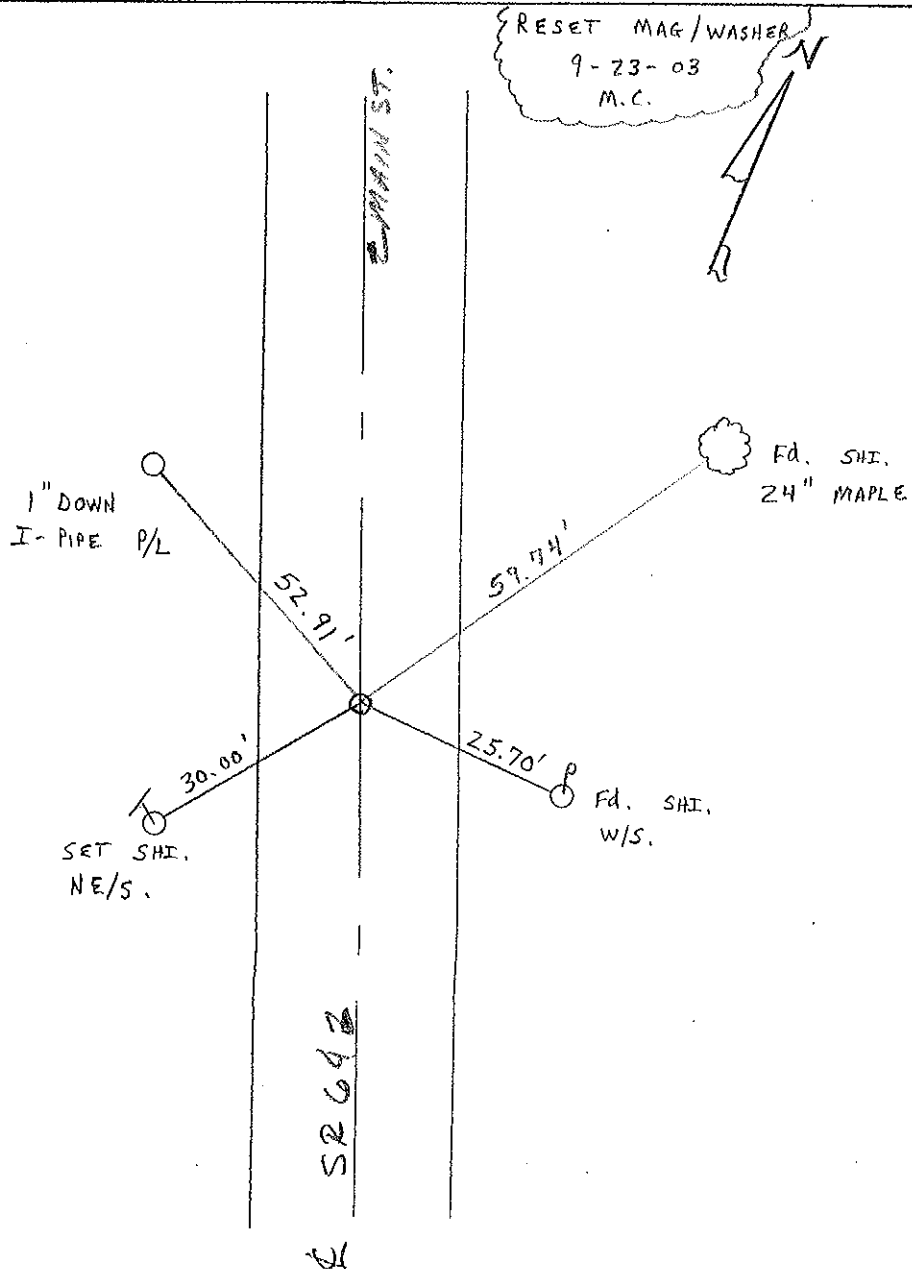
S.L.M. 81+54

SWANTON	
CORP	



NOTE:

RR Spk over
RR Spk 4" Deep



O.D.O.T. DISTRICT 2 SURVEY OFFICE

PERSONNEL _____

REFERENCE NO. 2B

SHEET 14 OF 16

NOTES 1. Stone

H.C. J. Curtis

DATE 6 April 88

ROUTE SR #64

R.C. J. Hauschalter

WEATHER Cloudy

COUNTY Fulton

TEMP. 60°

TOWNSHIP Fulton

SECTION _____

T. _____ R. _____

TYPE MONUMENT R.R. Spk.

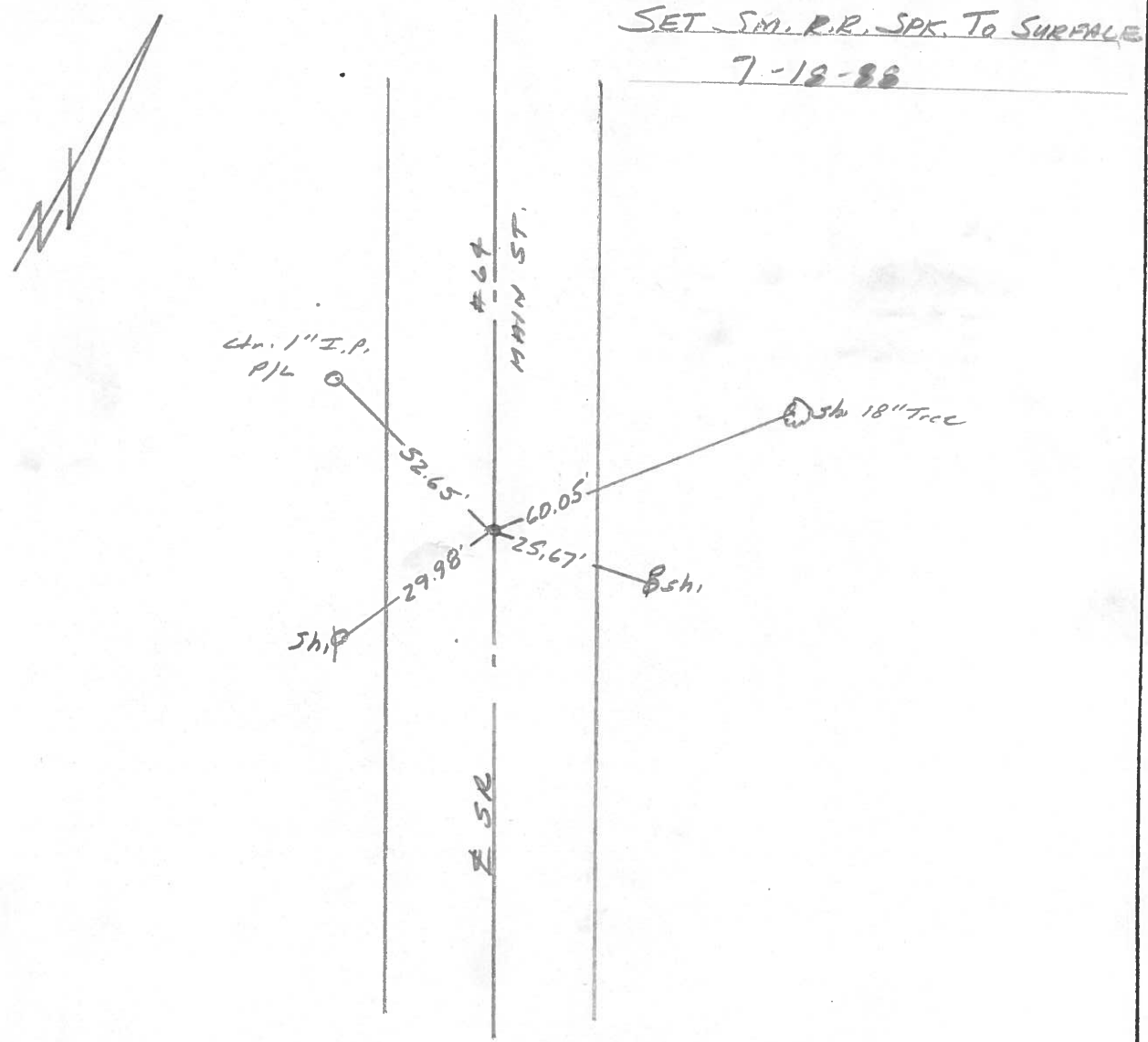
ON SURFACE - BELOW 4" deep

LEFT - \odot PAV'T. - RIGHT _____

TO _____ EDGE PAVEMENT

S.L.M. 81+54

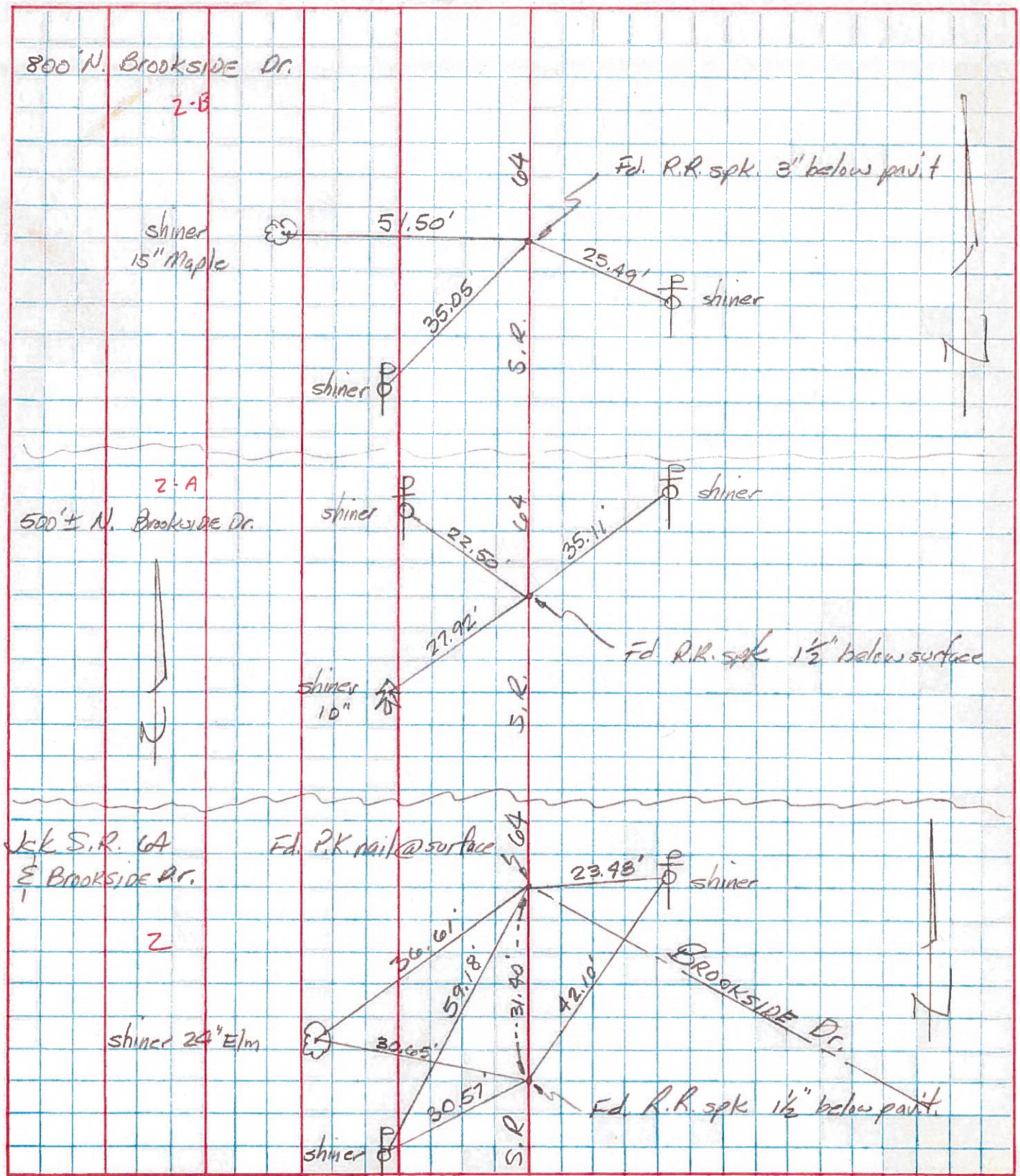
SW	NTON
CORP	



S.R. 64 FULTON

PERSONNEL	TITLE	PERSONNEL	TITLE	COUNTY	DATE
Tomsic		Granata		Fulton	Aug. 6-73
Vanvo				S. R.	64
Neuser				SEC.	FULTON TWP
Boyle				TEMP.	

DESCRIPTION LEFT CENTER LINE RIGHT JOB NO.



PERSONNEL	TITLE	PERSONNEL	TITLE	COUNTY	DATE
Stone				Fulton	22 March 73
Michalak				S. R. #64	WEATHER Cool
Drano				SEC. Sweeton	TEMP. 35°
Curtis					

DESCRIPTION References to Control Points JOB NO. _____

