

O.D.O.T. DISTRICT 2 SURVEY OFFICE (USE ONLY)

PERSONNEL

REFERENCE NO. 5 A

SHEET 26 OF 59

NOTES HUSS DATE 5/19/10
 H.C. HUSS WEATHER SUNNY
 R.C. FINTEL TEMP. 65°

ROUTE SR 64
 COUNTY FULTON
 TOWNSHIP FULTON
 SECTION 35
 T 8 N R 4 E

DWG BY RHOADES PID PAVETRAIN

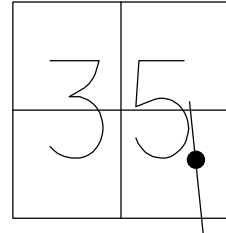
TYPE MONUMENT P.K./WASHER

ON SURFACE - ~~BELOW~~ ON

OFFSET 0.7' LT : ~~RT~~

9.6' TO LT EDGE PAVEMENT

STATION: 135+46.73



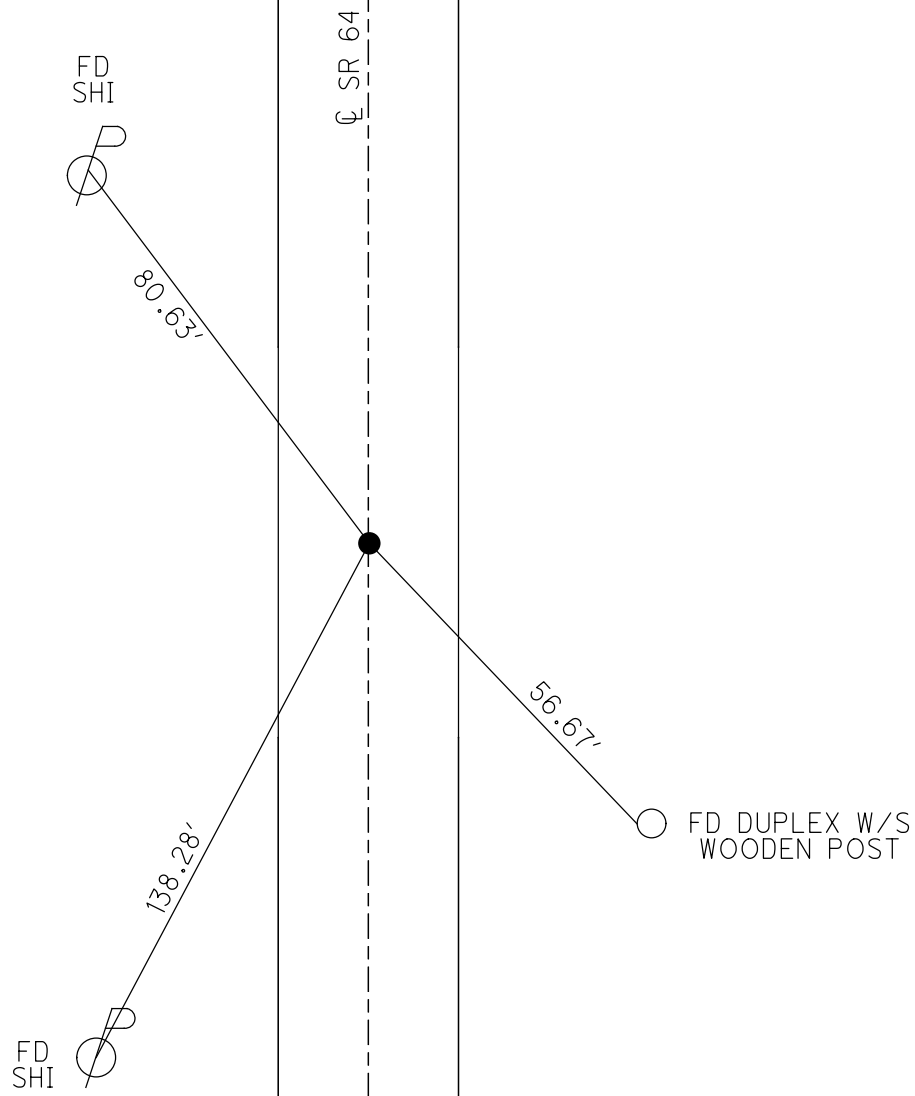
HORIZ.DATUM: NAD83 2011

GEOID: NAVD88 2012A

GRID: NORTHING: 710455.591

EASTING: 1584471.478

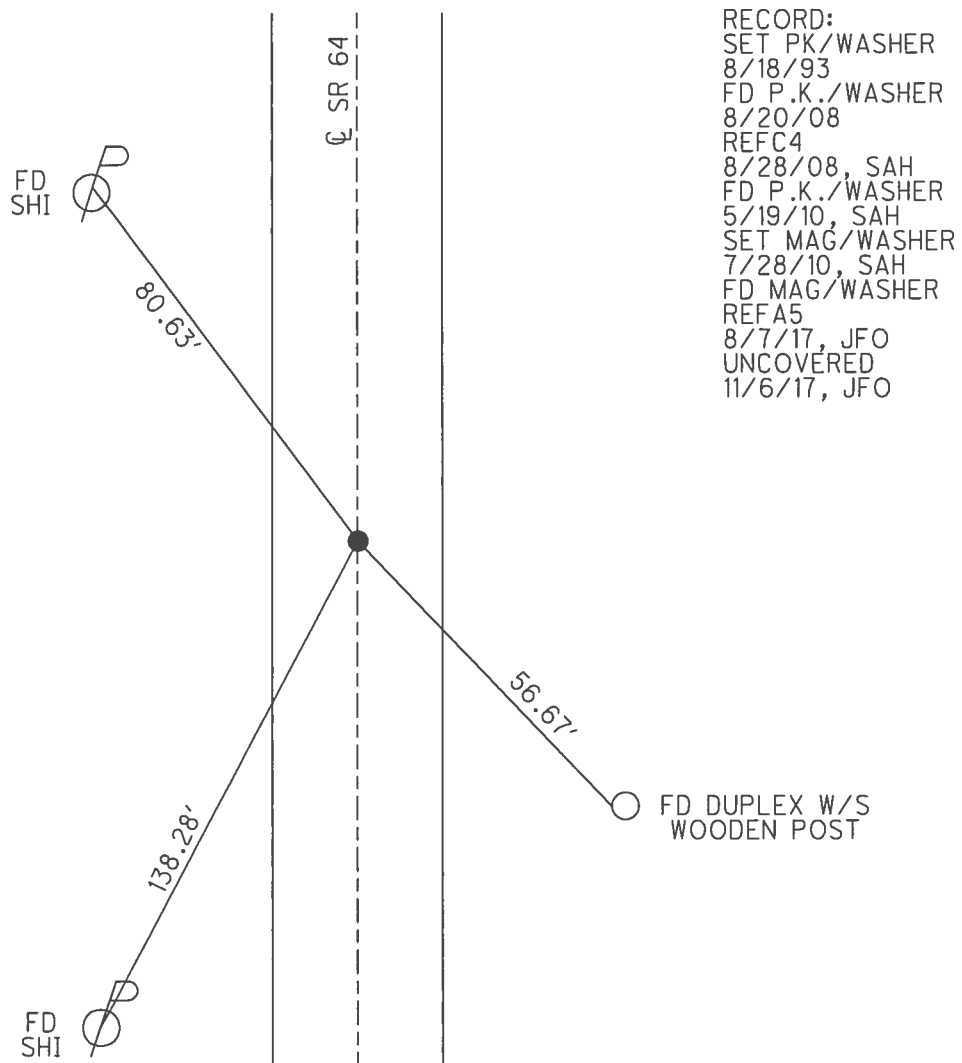
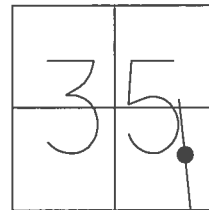
RECORD:
 SET PK/WASHER
 8/18/93
 FD P.K./WASHER
 8/20/08
 REFC4
 8/28/08, SAH
 FD P.K./WASHER
 5/19/10, SAH
 SET MAG/WASHER
 7/28/10, SAH
 FD MAG/WASHER
 REFA5
 8/7/17, JFO
 UNCOVERED
 11/6/17, JFO
 FD MAG/WASHER
 NEWREFA5
 6/27/22, DSA
 FD MAG/WASHER
 12/29/22, TDN



O.D.O.T. DISTRICT 2 SURVEY OFFICE (USE ONLY)

PERSONNEL _____ REFERENCE NO. 5 A SHEET 6 OF 39
 NOTES HUSS DATE 5-19-10 ROUTE SR 64
 H.C. HUSS WEATHER SUNNY COUNTY FULTON
 R.C. FINTEL TEMP. 65° TOWNSHIP FULTON
 _____ SECTION 35
 _____ T 8 N R 4 E

TYPE MONUMENT PK/WASHER
 ON SURFACE - ~~BELOW~~ ON _____
 LEFT - ☉ PAV'T - ~~RIGHT~~ 0.7'
9.6' TO LT. EDGE PAVEMENT
 S.L.M. 135+46.73
 GRID: NOTHING: 710455.591 EASTING: 1584471.478

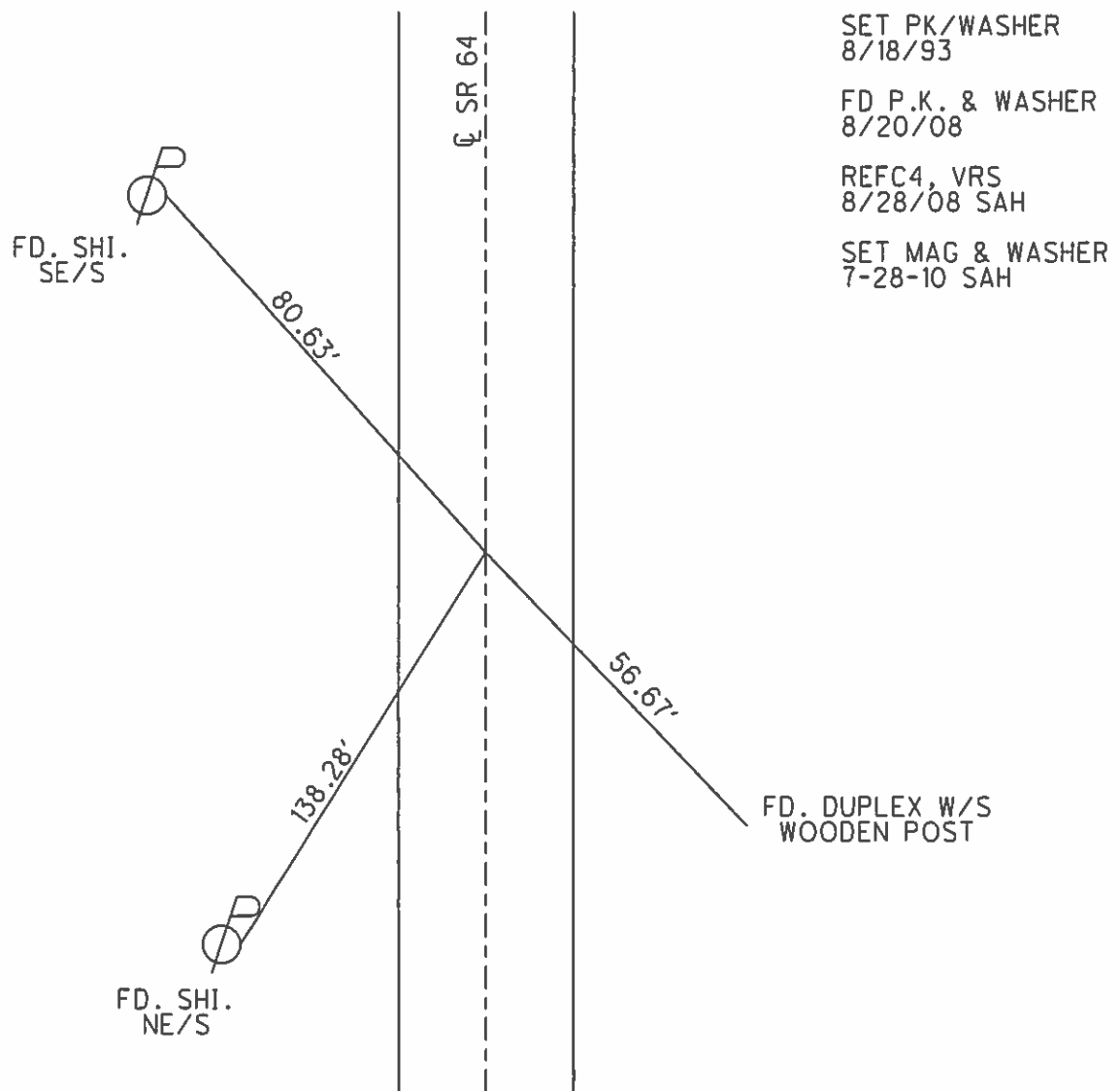
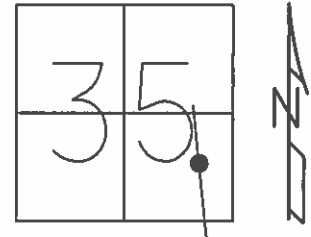


RECORD:
 SET PK/WASHER
 8/18/93
 FD P.K./WASHER
 8/20/08
 REFC4
 8/28/08, SAH
 FD P.K./WASHER
 5/19/10, SAH
 SET MAG/WASHER
 7/28/10, SAH
 FD MAG/WASHER
 REFA5
 8/7/17, JFO
 UNCOVERED
 11/6/17, JFO

O.D.O.T. DISTRICT 2 SURVEY OFFICE (USE ONLY)

PERSONNEL _____ REFERENCE NO. 5 A SHEET 5 OF 39
 NOTES HUSS DATE 5-19-10 ROUTE SR 64
 H.C. HUSS WEATHER SUNNY COUNTY FULTON
 R.C. FINTEL TEMP. 65° TOWNSHIP FULTON
 SECTION 35
T 8 N R 4 E

TYPE MONUMENT PK/WASHER
 ON SURFACE - ~~BELOW~~ ON
 LEFT - Q PAV'T - ~~RIGHT~~ 0.7'
9.6' TO LT EDGE PAVEMENT
 S.L.M. 135+46.73
 GRID: NOTHING: 710455.581 EASTING: 1584471.404



O.D.O.T. DISTRICT 2 SURVEY OFFICE

PERSONNEL

REFERENCE NO. 55A SHEET 5 OF 20

NOTES D. CURTIS

H.C. CORDES

DATE 7-27-93

ROUTE S.R. #64

R.C. CANTERBERRY

WEATHER Sunny

COUNTY FULTON

ROMETO

TEMP. +85 65°

TOWNSHIP FULTON

SET P.K. & WASHER
8-18-93

SECTION 35

T 8 N R 4 E

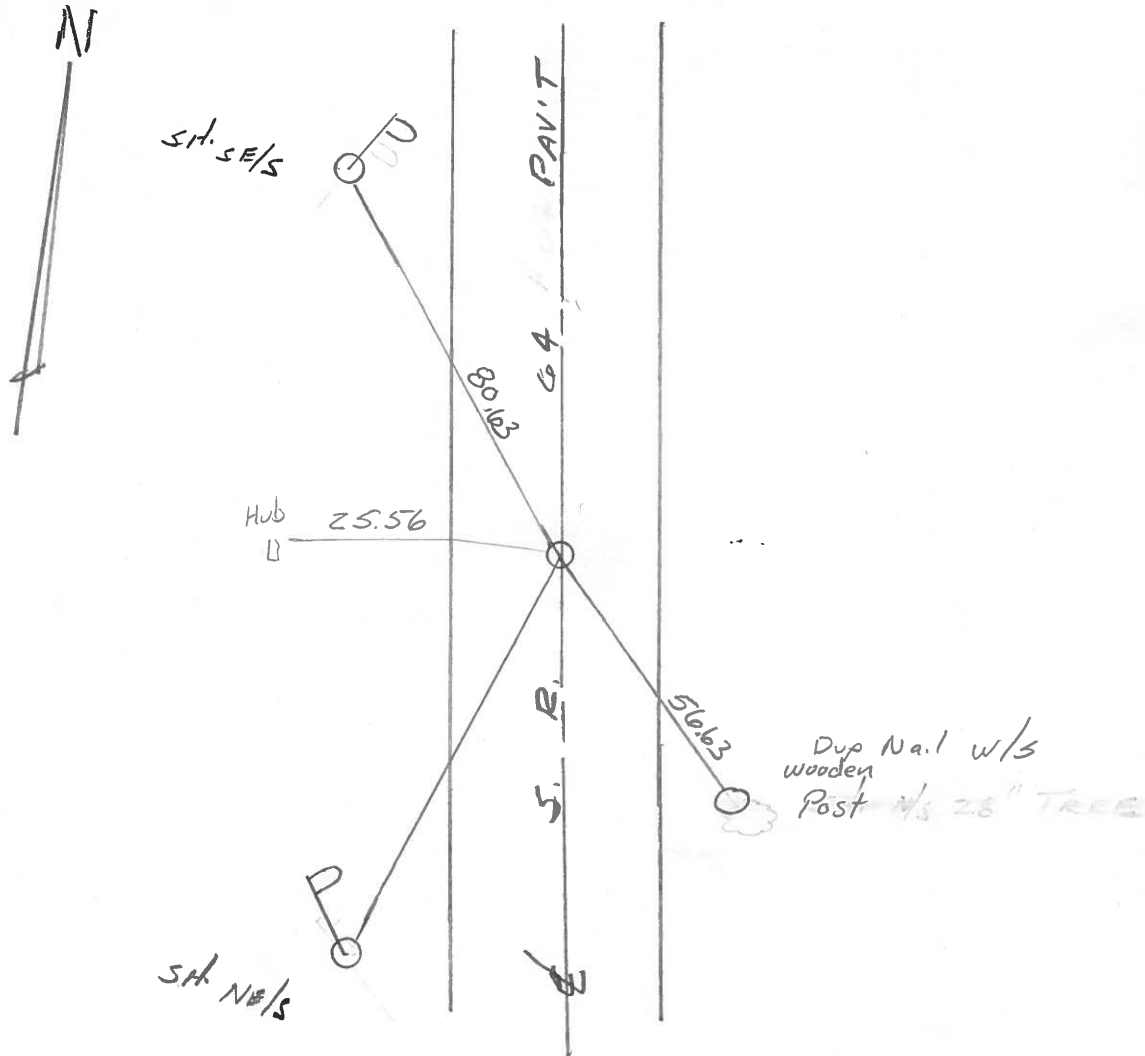
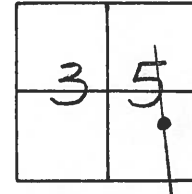
TYPE MONUMENT SM. R.R. SPK.

ON SURFACE - ~~BELOW~~ YES

LEFT - ~~PAV'T.~~ - RIGHT 0.5' LT.

9.6' TO LT. EDGE PAVEMENT

S.L.M. 125 + 17



Q.D.O.T. DISTRICT 2 SURVEY OFFICE

SHEET 4 OF

County Fulton S.R. 64

Date 18 April 84

Township Fulton

Weather Cloudy

Section 35

Temp. 35°

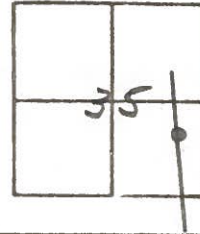
T N, R E

Personnel I. Stone

P. Neuse

R. Michalak

D. Curtis



125 + 10

REF. NO. ~~1C~~ 5A



duplex
NEIS

R

18.11'

#64

37.35'

Hub & Tack

Ed 1/2" I. pipe 2" deep
10.0' to W. edge put.
10.5' to E. edge put.
Reset Sm. R.R. Spk. - 6-18-84
To surface

37.56'

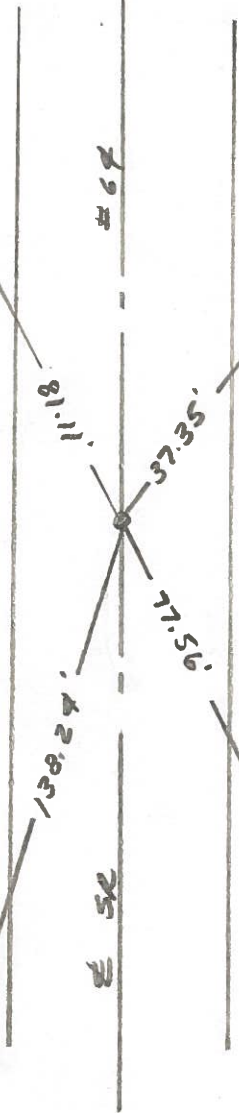
138.24'

E 52

Shiner in 28" Tare

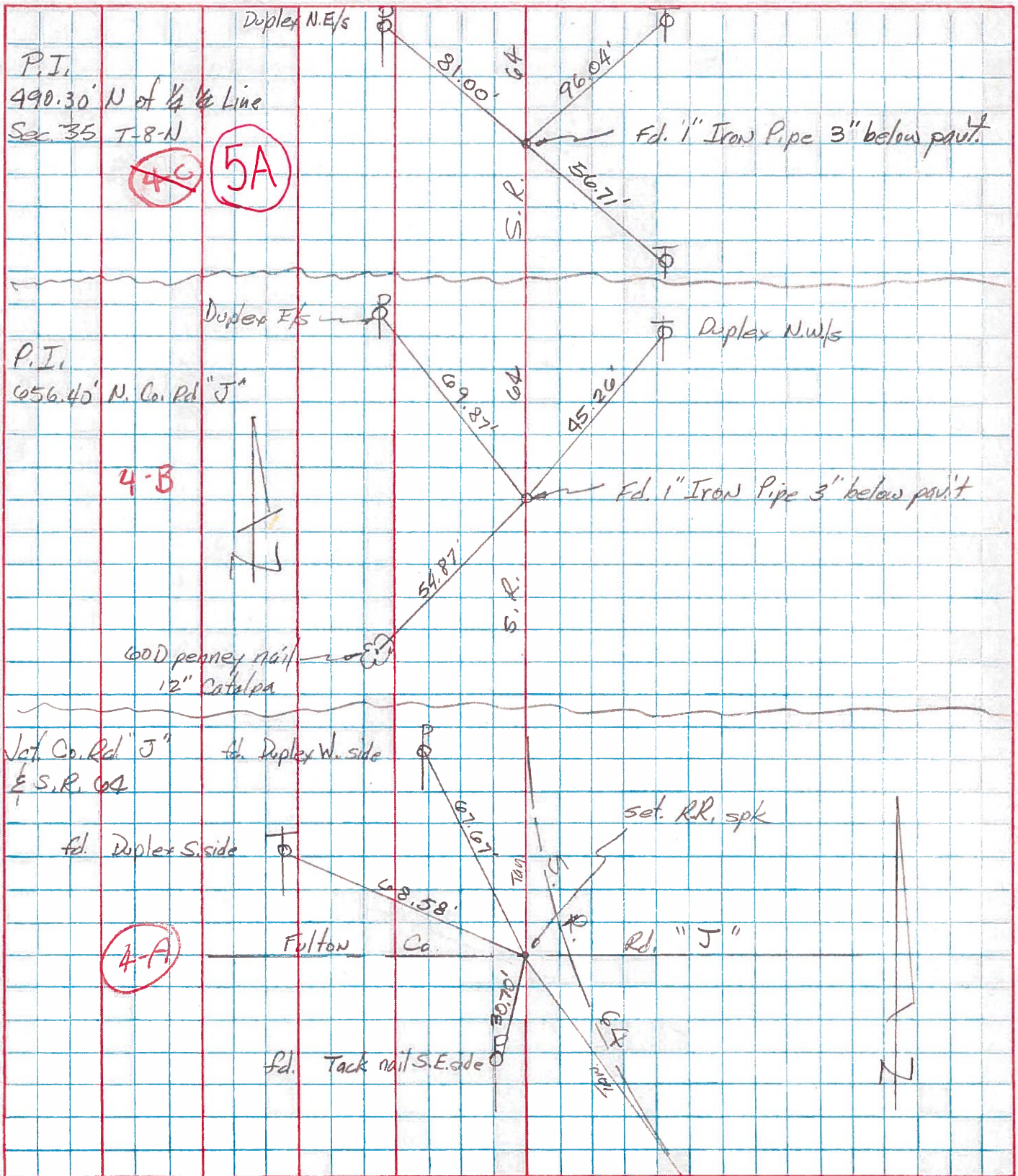
Shiner

R



| | | | | | |
|-----------|-------|-----------|-------|-----------------|--------------|
| PERSONNEL | TITLE | PERSONNEL | TITLE | COUNTY | DATE |
| Tomsic | | Boyle | | Fulton | AUG. 8, 1973 |
| Neuser | | | | S. R. 64 | WEATHER |
| Granata | | | | SEC. FULTON TWP | TEMP. |
| Vandy | | | | | |

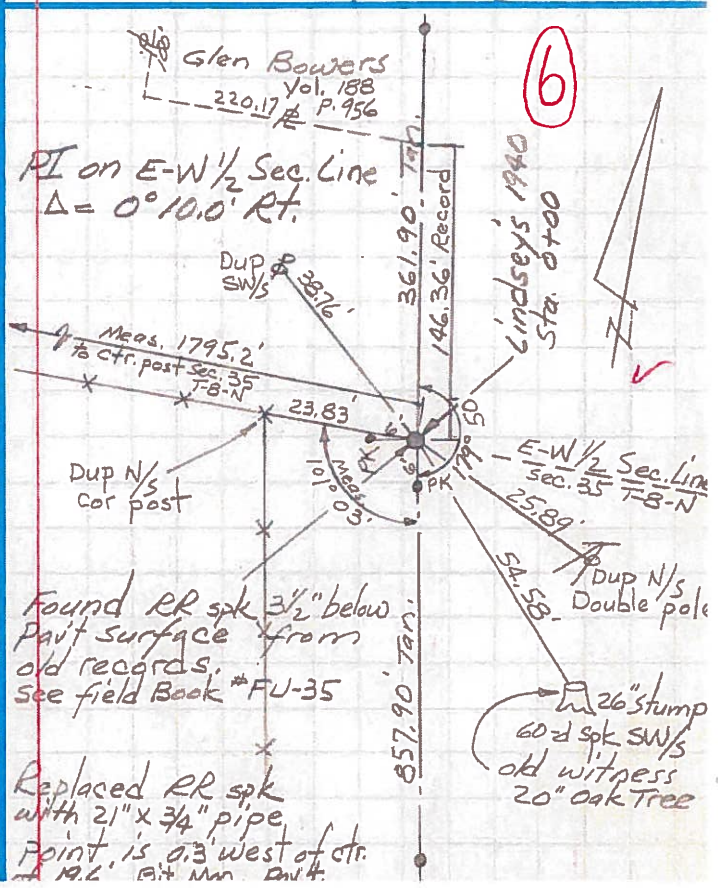
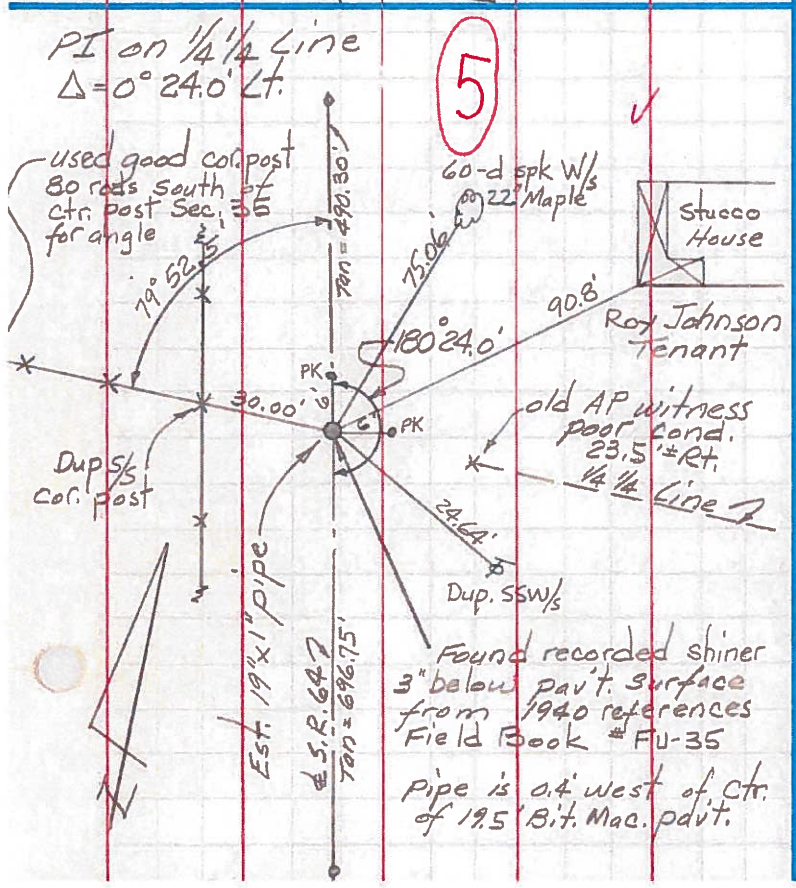
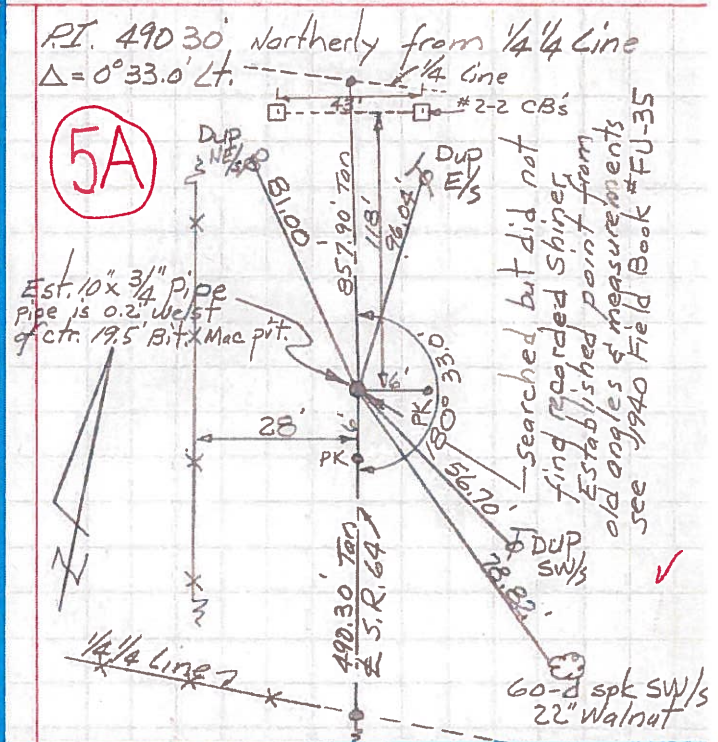
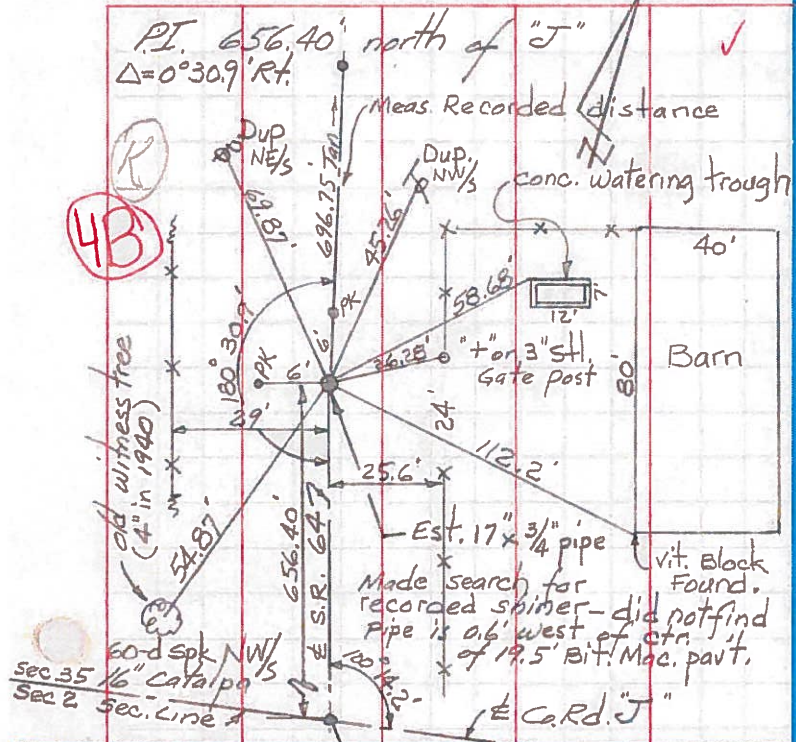
DESCRIPTION _____ LEFT _____ CENTER LINE _____ RIGHT _____ JOB NO. _____



PERSONNEL TITLE PERSONNEL TITLE COUNTY Fulton DATE Apr. 1971
Red Beach _____
Newcomb _____
Knape _____
Wise _____
 S. R. 64 WEATHER _____
 SEC. Ful. Twp. Sec. 35-T-8-N TEMP. _____

CONTROL POINTS

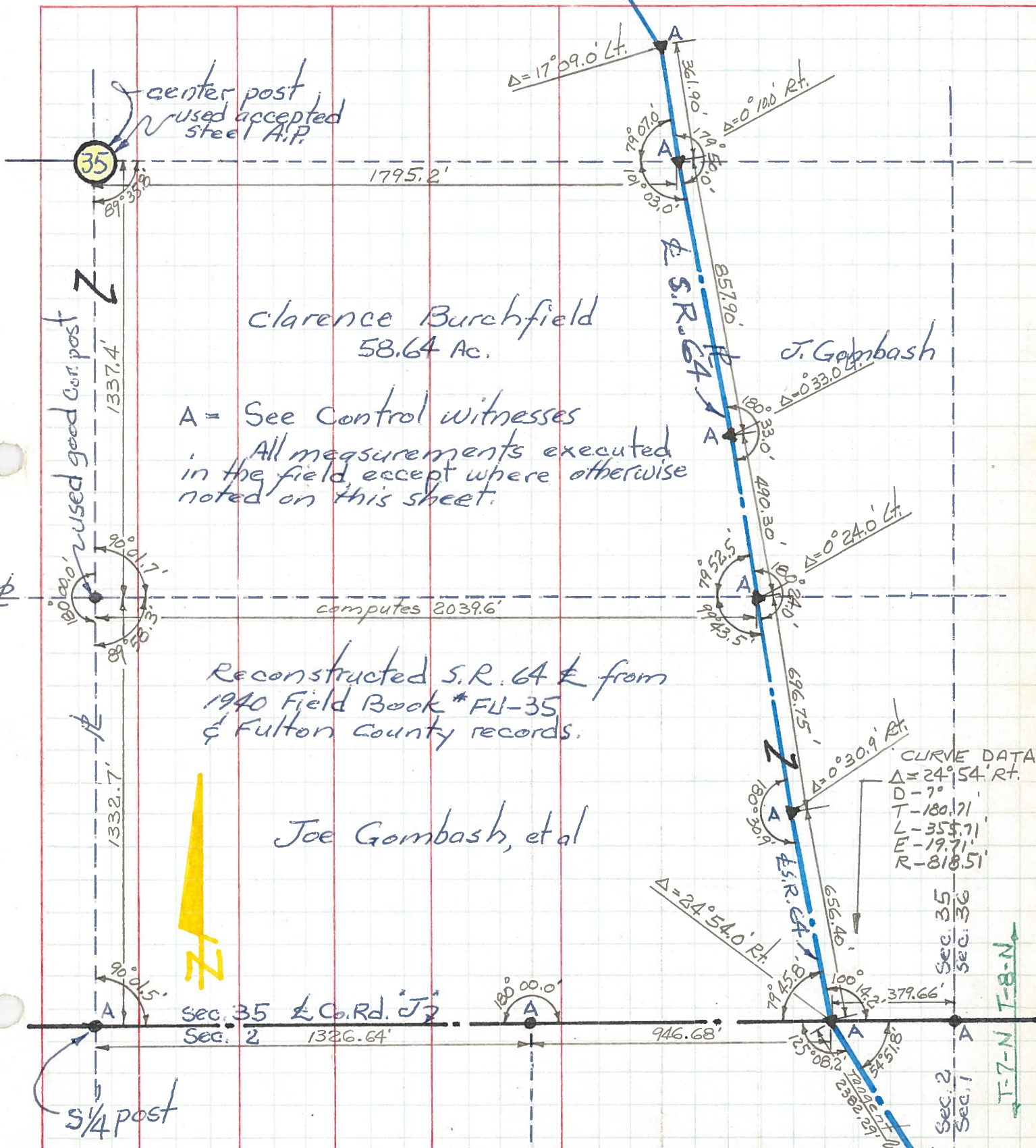
DESCRIPTION LEFT CENTER LINE RIGHT JOB NO.



PERSONNEL TITLE PERSONNEL TITLE
 Red Beach
 Newscomb
 Knope
 Wise

COUNTY FULTON DATE Apr. 1971
 S. R. 64 WEATHER
 SEC. SE 1/4 Sec. 35 Ful. Twp. TEMP.

DESCRIPTION ALIGNMENT & CONTROLS LEFT CENTER LINE RIGHT JOB NO.



A = See Control witnesses
 All measurements executed
 in the field, except where otherwise
 noted on this sheet.

Reconstructed S.R. 64 from
 1940 Field Book *FU-35
 & Fulton County records.

CURVE DATA

| | |
|---|--------------|
| Δ | 24°54.0' Rt. |
| D | 7° |
| T | 180.71 |
| L | 354.71 |
| E | 19.71 |
| R | 818.51 |

T-7-N T-8-N