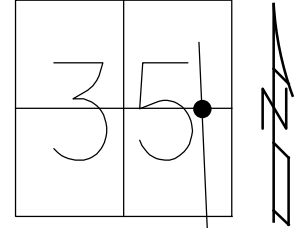


O.D.O.T. DISTRICT 2 SURVEY OFFICE (USE ONLY)

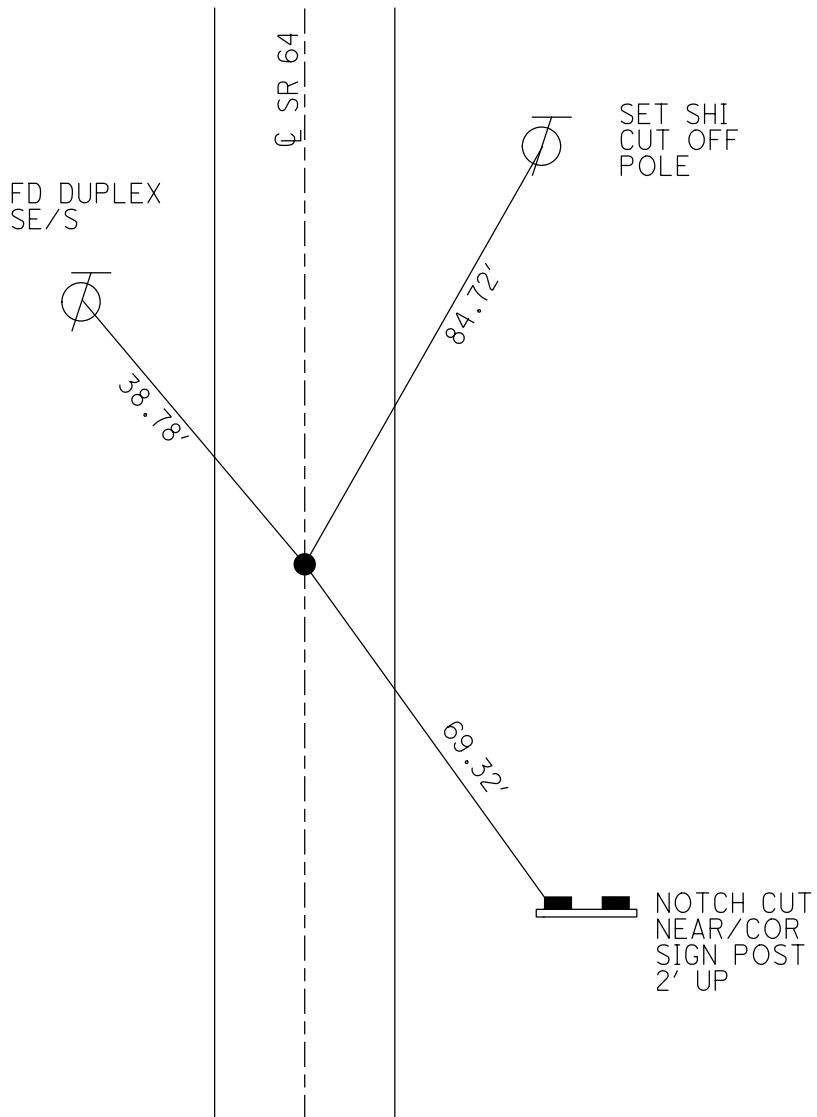
PERSONNEL \_\_\_\_\_ REFERENCE NO. 6 SHEET 27 OF 59  
 NOTES RHOADES DATE 8/7/17 ROUTE SR 64  
 H.C. O'DONNELL WEATHER FAIR COUNTY FULTON  
 R.C. RHOADES TEMP. 65° TOWNSHIP FULTON  
 \_\_\_\_\_ SECTION 35  
 DWG BY RHOADES PID PAVETRAIN T 8 N R 4 E

TYPE MONUMENT MAG/WASHER  
 ON SURFACE - ~~BELOW~~ ON  
 OFFSET Q PAVEMENT 0.5' ~~LT~~ : RT  
9.6' TO LT EDGE PAVEMENT  
 STATION: 144+04.52



HORZ. DATUM: NAD83 2011 GEOID: NAVD88 2012A  
 GRID: NORTHING: 711300.459 EASTING: 1584323.400

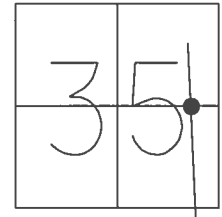
RECORD:  
 SET PK/WASHER  
 8/18/93  
 FD 3/4" IPIPE  
 UNDER RPM  
 0.2' DOWN  
 8/21/08  
 REF6  
 8/28/08, SAH  
 FD 3/4" IPIPE  
 0.2' DOWN  
 5/19/10, SAH  
 SET MAG/WASHER  
 7/28/10, SAH  
 FD MAG/WASHER  
 REF6  
 8/7/17, JFO  
 UNCOVERED  
 11/6/17, JFO  
 FD MAG/WASHER  
 NEWREF6  
 6/27/22, DSA  
 FD MAG/WASHER  
 12/29/22, TDN



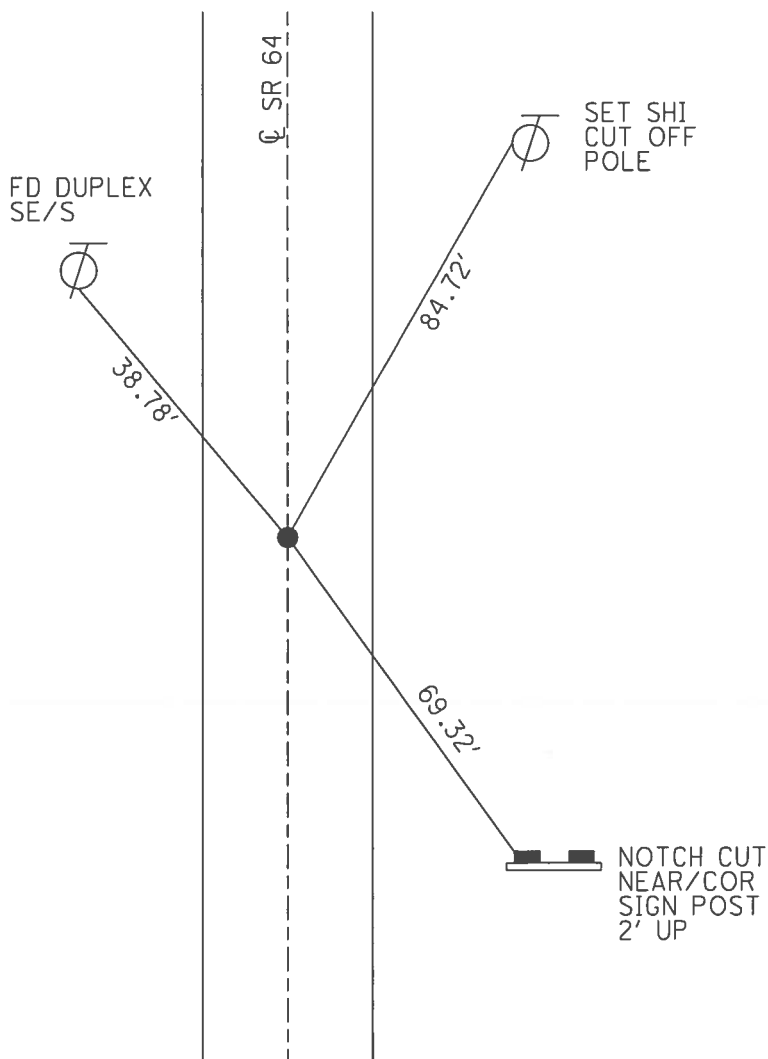
**O.D.O.T. DISTRICT 2 SURVEY OFFICE (USE ONLY)**

PERSONNEL \_\_\_\_\_ REFERENCE NO. 6 SHEET 7 OF 39  
 NOTES RHOADES DATE 8/7/17 ROUTE SR 64  
 H.C. O'DONNELL WEATHER FAIR COUNTY FULTON  
 R.C. RHOADES TEMP. 65° TOWNSHIP FULTON  
 \_\_\_\_\_ SECTION 35  
 \_\_\_\_\_ T 8 N R 4 E

TYPE MONUMENT \_\_\_\_\_ MAG/WASHER \_\_\_\_\_  
 ON SURFACE - ~~BELOW~~ \_\_\_\_\_ ON \_\_\_\_\_  
~~LEFT~~ -  $\odot$  PAV'T - RIGHT 0.5'  
9.6' TO LT EDGE PAVEMENT  
 S.L.M. 144+04.52  
 GRID: NOTHING: 711300.459 EASTING: 1584323.400



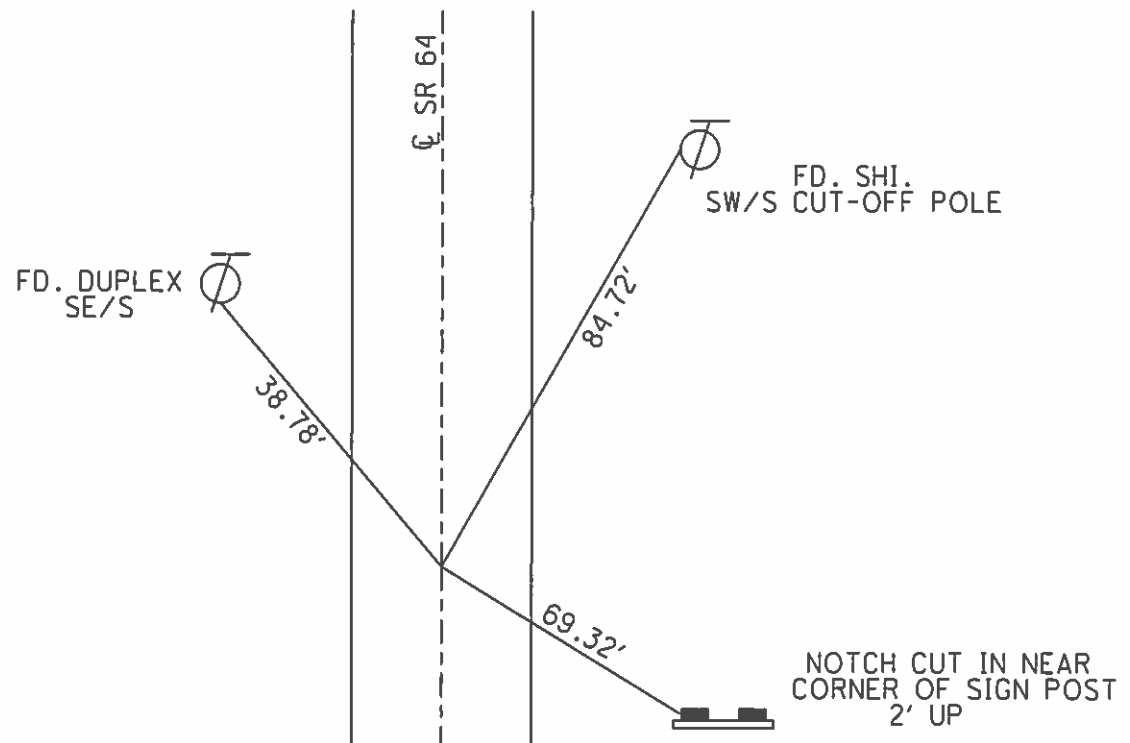
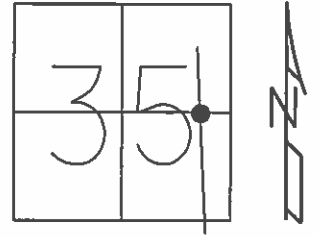
RECORD:  
 SET PK/WASHER  
 8/18/93  
 FD 3/4" IPIPE  
 UNDER RPM  
 0.2' DOWN  
 8/21/08  
 REF6  
 8/28/08, SAH  
 FD 3/4" IPIPE  
 0.2' DOWN  
 5/19/10, SAH  
 SET MAG/WASHER  
 7/28/10, SAH  
 FD MAG/WASHER  
 REF6  
 8/7/17, JFO  
 UNCOVERED  
 11/6/17, JFO



O.D.O.T. DISTRICT 2 SURVEY OFFICE (USE ONLY)

PERSONNEL \_\_\_\_\_ REFERENCE NO. 6 SHEET 7 OF 39  
 NOTES HUSS DATE 5-19-10 ROUTE SR 64  
 H.C. HUSS WEATHER SUNNY COUNTY FULTON  
 R.C. FINTEL TEMP. 65° TOWNSHIP FULTON  
 \_\_\_\_\_ SECTION 35  
 \_\_\_\_\_ T 8 N R 4 E

TYPE MONUMENT 3/4" IPIPE  
~~ON SURFACE~~ - BELOW 0.2'  
 LEFT - ☉ PAV'T - ~~RIGHT~~ 0.5'  
9.6' TO LT. EDGE PAVEMENT  
 S.L.M. 144+04.52  
 GRID: NOTHING: 711300.480 EASTING: 1584323.257



SET PK/WASHER  
 8/18/93  
 FD 3/4" IRON PIPE  
 UNDER R.P.M., 0.2' DOWN  
 8/21/08  
 REF6, VRS  
 8/28/08 SAH  
 SET MAG & WASHER  
 7-28-10 SAH

# O.D.O.T. DISTRICT 2 SURVEY OFFICE

PERSONNEL

REFERENCE NO. 6

SHEET 6 OF 20

NOTES D. CURTIS

H.C. COFOES

R.C. CANTERBERRY

ROMERO

DATE 7-27-93

WEATHER HOT

TEMP. +85

SET P.K. & WASHOR  
8-18-93 A.R.

ROUTE S.R. #64

COUNTY FULTON

TOWNSHIP FULTON

SECTION 35

T. N R. 4 E

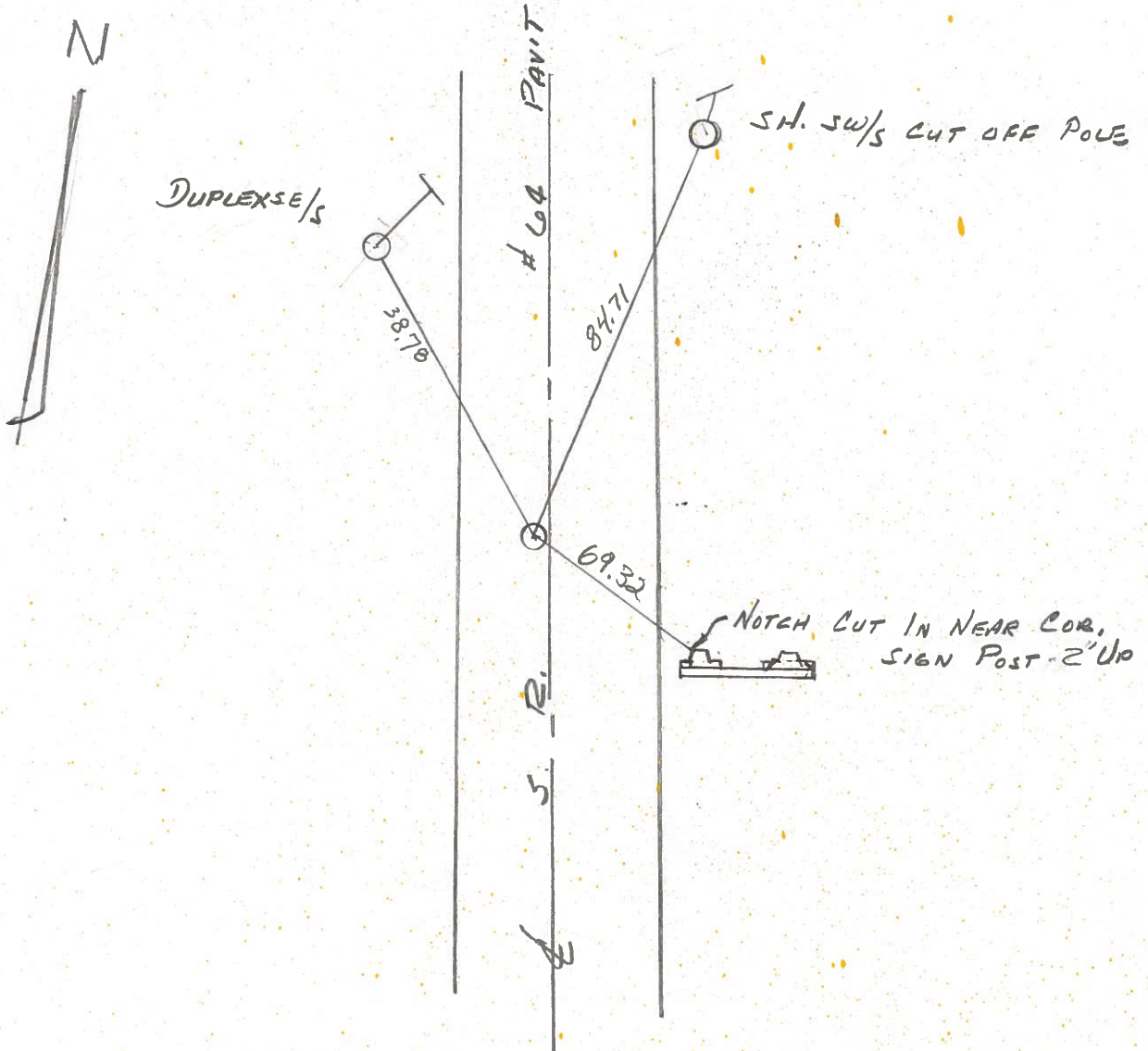
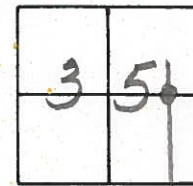
TYPE MONUMENT 3/4" I. PIPE

ON SURFACE ~~BELOW~~ YES

LEFT - ~~PAV'T.~~ RIGHT 0.5' LT.

9.6' TO LT. EDGE PAVEMENT

S.L.M. 133 + 77



Q.D.O.T. DISTRICT 2 SURVEY OFFICE

SHEET 6 OF

County Fulton S.R. 64

Date 18 April 84

Township Fulton

Weather Cloudy

Section 35

Temp. 35°

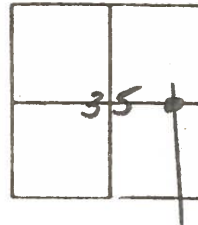
T N, R E

Personnel J. Stone

P. Neuser

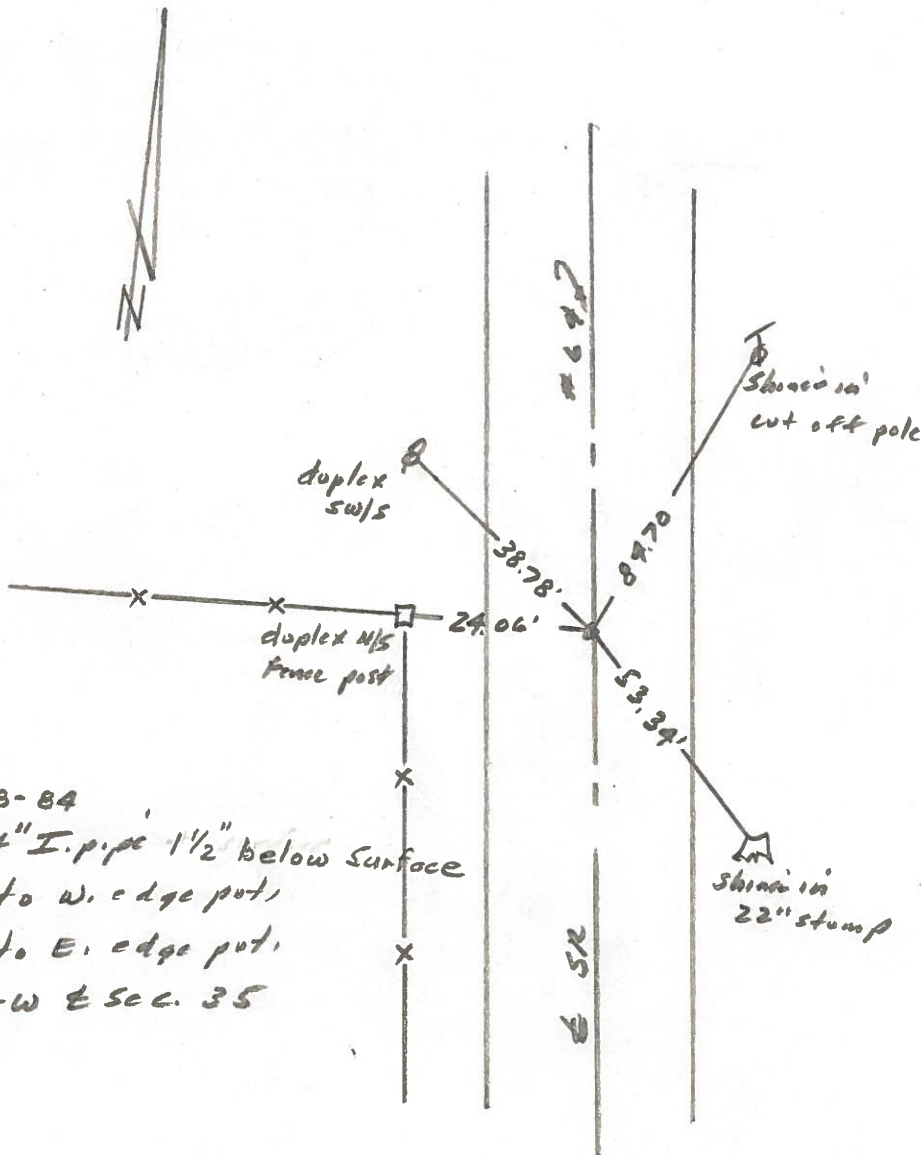
R. Michalske

D. Curtis



133+70

REF. NO. 6



6-18-84  
Fd 3/4" I. pipe 1 1/2" below surface  
10.0' to W. edge put,  
9.9' to E. edge put,  
on E-W E Sec. 35



PERSONNEL	TITLE	PERSONNEL	TITLE	COUNTY	DATE	WEATHER	TEMP.
Tomsic		Boyle		Fulton	Aug. 6, 1972		
Neuser				S. R. 64			
Granata				SEC. FULTON TWP			
Vanyo							

DESCRIPTION	LEFT	CENTER LINE	RIGHT	JOB NO.
-------------	------	-------------	-------	---------

