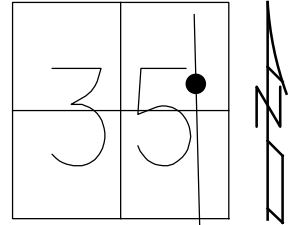


O.D.O.T. DISTRICT 2 SURVEY OFFICE (USE ONLY)

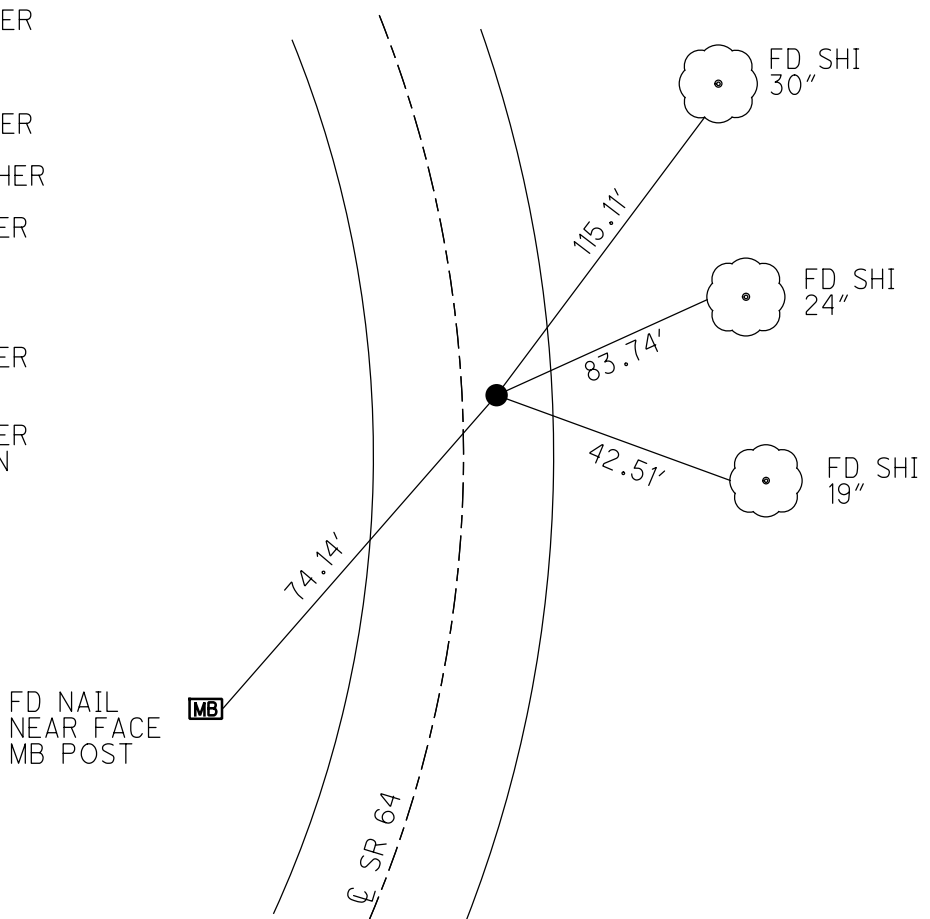
PERSONNEL _____ REFERENCE NO. 6 B SHEET 30 OF 59
 NOTES RHOADES DATE 8/7/17 ROUTE SR 64
 H.C. O'DONNELL WEATHER FAIR COUNTY FULTON
 R.C. RHOADES TEMP. 65° TOWNSHIP FULTON
 DWG BY RHOADES PID PAVETRAIN SECTION 35
 T 8 N R 4 E

TYPE MONUMENT MAG/WASHER
 ON SURFACE - ~~BELOW~~ ON
 OFFSET Q PAVEMENT 5.1' ~~LF~~ : RT
4.6' TO RT EDGE PAVEMENT
 STATION: 151+68.16



HORZ. DATUM: NAD83 2011 GEOID: NAVD88 2012A
 GRID: NORTHING: 712015.272 EASTING: 1584079.909

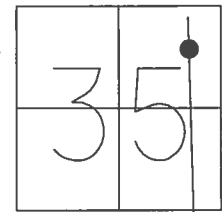
RECORD:
 SET PK/WASHER
 8/18/93
 FD P.K./WASHER
 8/20/08
 REFB6
 8/28/08, SAH
 FD P.K./WASHER
 5/24/10, SAH
 SET MAG/WASHER
 7/28/10, SAH
 FD MAG/WASHER
 REFB6
 8/7/17, JFO
 UNCOVERED
 11/6/17, JFO
 FD MAG/WASHER
 NEWREFB6
 6/27/22, DSA
 FD MAG/WASHER
 12/29/22, TDN



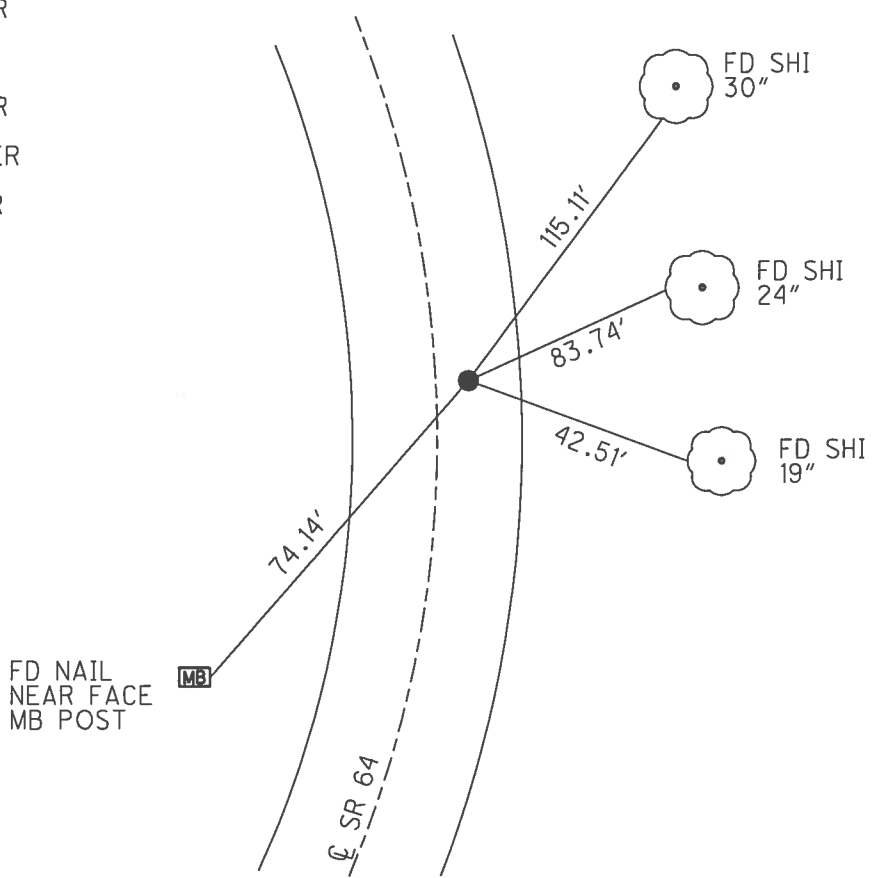
O.D.O.T. DISTRICT 2 SURVEY OFFICE (USE ONLY)

PERSONNEL _____ REFERENCE NO. 6 B SHEET 10 OF 39
 NOTES RHOADES DATE 8/7/17 ROUTE SR 64
 H.C. O'DONNELL WEATHER FAIR COUNTY FULTON
 R.C. RHOADES TEMP. 65° TOWNSHIP FULTON
 _____ SECTION 35
 _____ T 8 N R 4 E

TYPE MONUMENT _____ MAG/WASHER _____
 ON SURFACE - ~~BELOW~~ _____ ON _____
~~LEFT~~ - CL PAV'T - RIGHT 5.1' _____
4.6' TO RT EDGE PAVEMENT
 S.L.M. 151+68.16
 GRID: NOTHING: 712015.272 EASTING: 1584079.909



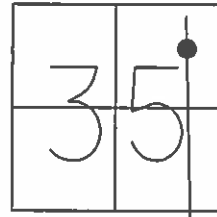
RECORD:
 SET PK/WASHER
 8/18/93
 FD P.K./WASHER
 8/20/08
 REFB6
 8/28/08, SAH
 FD P.K./WASHER
 5/24/10, SAH
 SET MAG/WASHER
 7/28/10, SAH
 FD MAG/WASHER
 REFB6
 8/7/17, JFO
 UNCOVERED
 11/6/17, JFO



O.D.O.T. DISTRICT 2 SURVEY OFFICE (USE ONLY)

PERSONNEL _____ REFERENCE NO. 6 B SHEET 10 OF 39
 NOTES HUSS DATE 5-24-10 ROUTE SR 64
 H.C. CANTERBURY WEATHER SUNNY COUNTY FULTON
 R.C. FINTEL TEMP. 81° TOWNSHIP FULTON
 _____ SECTION 35
 _____ T 8 N R 4 E

TYPE MONUMENT _____ PK/WASHER _____
 ON SURFACE - ~~BELOW~~ _____ ON _____
~~LEFT~~ - Q PAV'T - RIGHT 5.1'
4.6' TO RT. EDGE PAVEMENT
 S.L.M. 151+68.16
 GRID: NOTHING: 712015.274 EASTING: 1584079.773



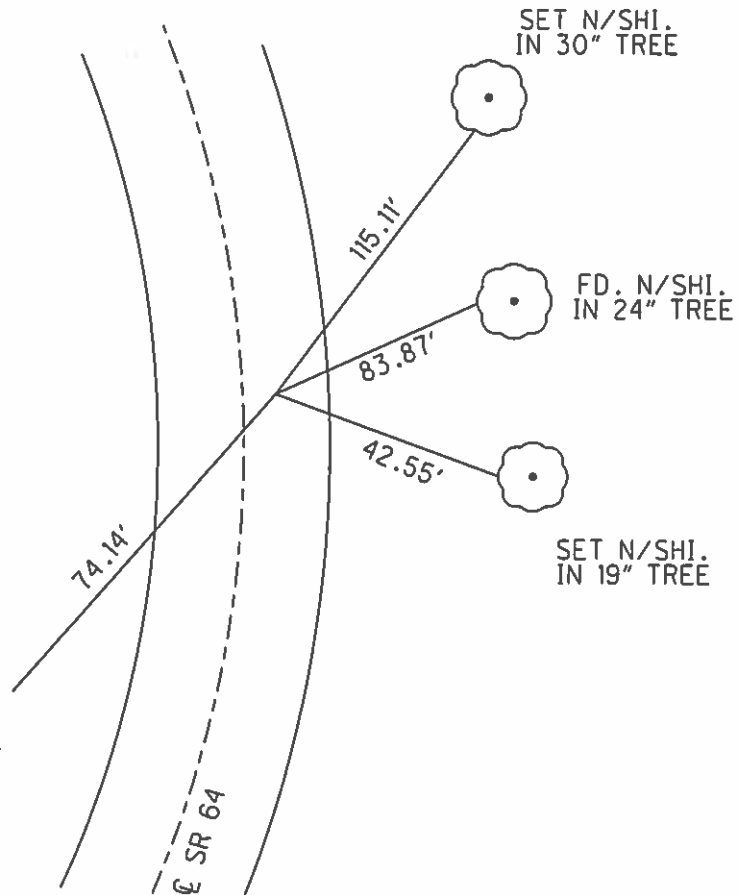
SET PK/WASHER
8/18/93

FD P.K. & WASHER
8/20/08

REFB6, VRS
8/28/08 SAH

SET MAG & WASHER
7-28-10 SAH

FD. N/SHI. IN NEAR
FACE MAIL BOX POST



O.D.O.T. DISTRICT 2 SURVEY OFFICE

PERSONNEL

REFERENCE NO. 6B

SHEET 8 OF 20

NOTES D. CURTIS

H.C. CORDES

DATE 7-27-93

ROUTE S.P. #64

R.C. CANTERBERRY

WEATHER Sunny

COUNTY FULTON

ROMETO

TEMP. +87

TOWNSHIP FULTON

SET P.K. & WASHER
8-18-93 B.C.

SECTION 35

T&N R 4 E

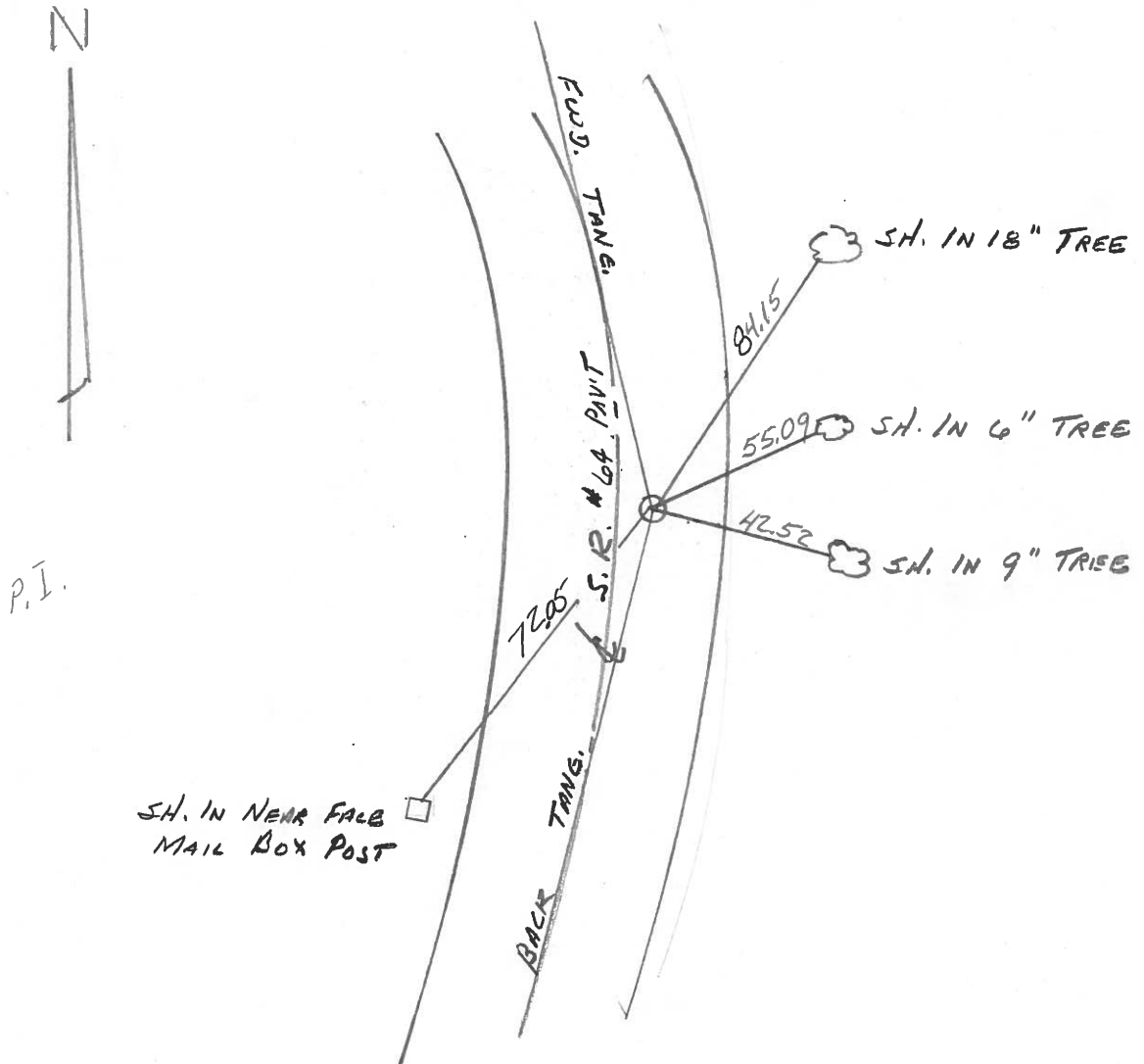
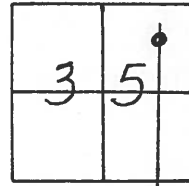
TYPE MONUMENT SM. R.R. SPK.

ON SURFACE - BELOW YES

LEFT - ~~0~~ PAV'T. - RIGHT S.O. RT.

4.0' TO RT. EDGE PAVEMENT

S.L.M. 141 + 60



Q.D.O.T. DISTRICT 2 SURVEY OFFICE

SHEET 6-B OF

County Fulton S.R. 64

Date 20 April 84

Township Fulton

Weather Sunny

Section 35

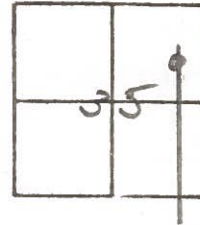
Temp. 45°

T N, R E

Personnel I. Stone

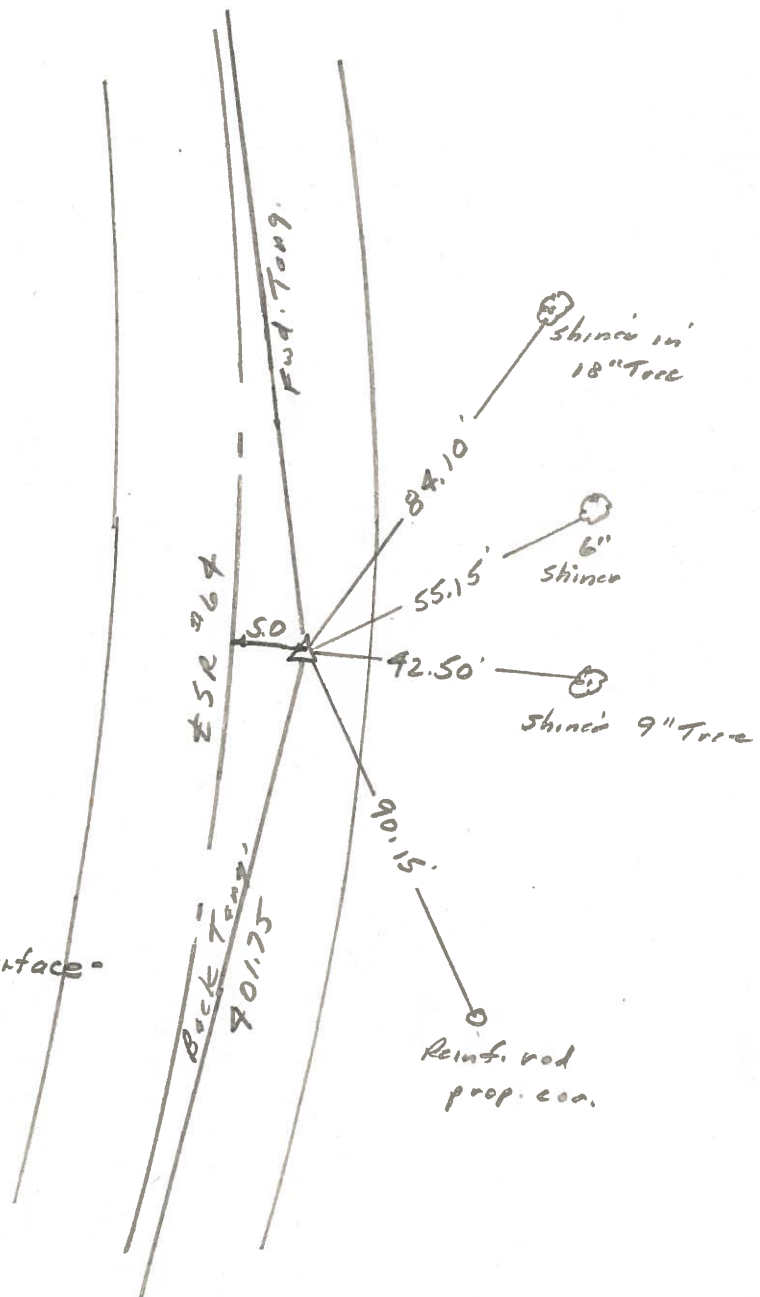
P. Neuser

R. Michalak



141+31

REF. NO. 6-B



Fd. 1" I. pipe 2" deep
 Set.
 5.5' to E. edge put.
 14.7' to W. edge put.
 Reset Sm. R.R. Spk. to Surface -
 6-18-84

PERSONNEL TITLE PERSONNEL TITLE COUNTY FULTON DATE Apr '71
Red Beach _____
Newcomb _____
Knape _____
Wise _____
 S. R. 64 WEATHER _____
 SEC. Ful. Twp. Sec. 35 T-8-N TEMP. _____

DESCRIPTION CONTROL POINTS JOB NO. _____

