

O.D.O.T. DISTRICT 2 SURVEY OFFICE (USE ONLY)

PERSONNEL _____ REFERENCE NO. 10 SHEET 36 OF 59

NOTES O'DONNELL DATE 6/15/21 ROUTE SR 64
 H.C. O'DONNELL WEATHER SUNNY COUNTY FULTON
 R.C. NIESE TEMP. 70° TOWNSHIP FULTON
 SECTION 2

DWG BY RHOADES PID PAVETRAIN T 10 N R 4 E

TYPE MONUMENT MAG/WASHER

ON SURFACE - ~~BELOW~~ ON _____

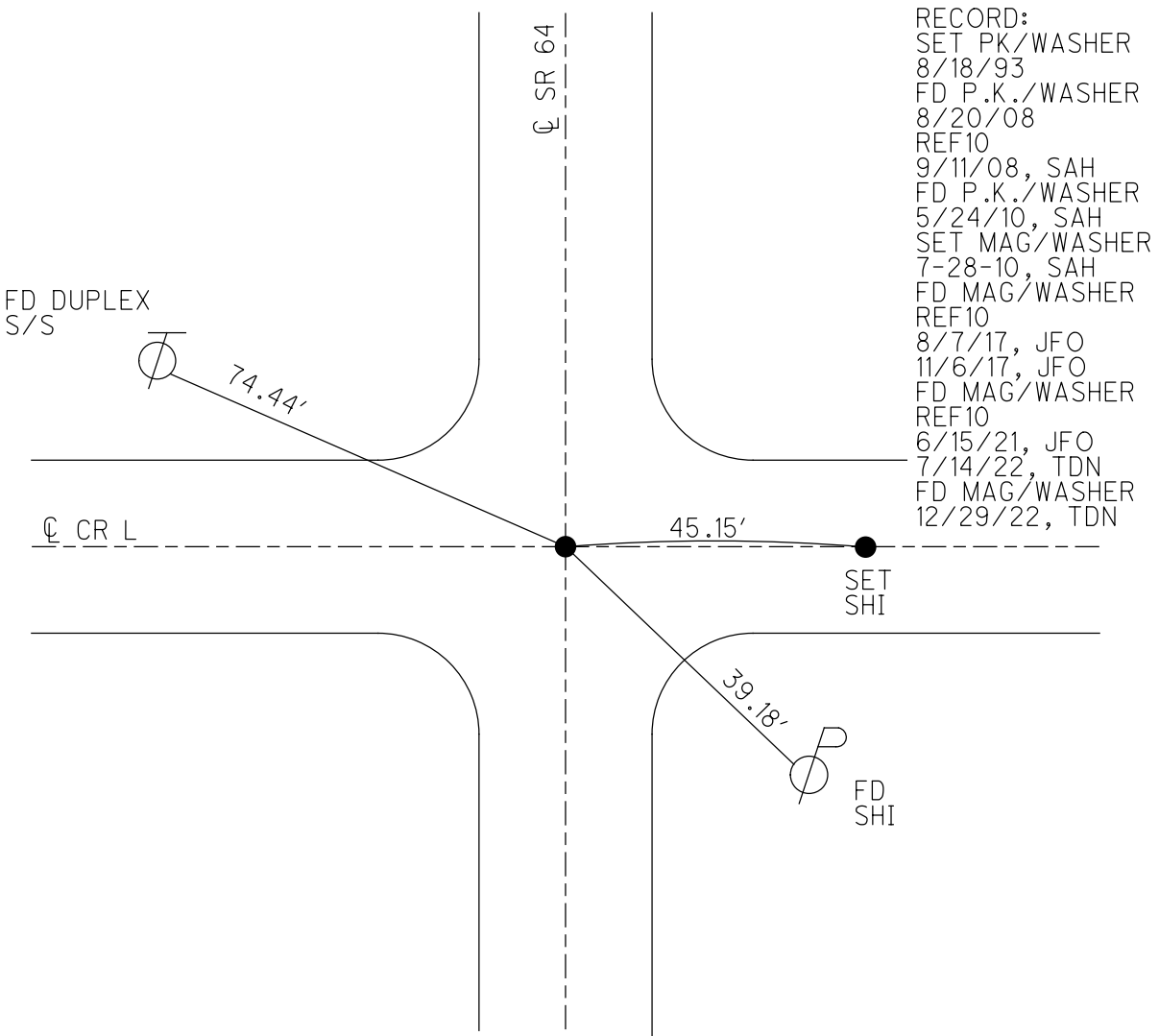
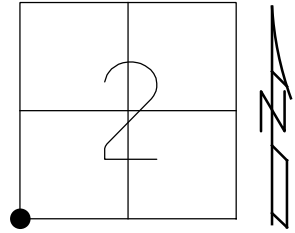
OFFSET \odot PAVEMENT 1.1' LT : ~~RT~~

- TO - EDGE PAVEMENT

STATION: 219+14

HORZ.DATUM: NAD83 2011 GEOID: NAVD88 2018

GRID: NORTHING: 717864.311 EASTING: 1581363.364



RECORD:
 SET PK/WASHER
 8/18/93
 FD P.K./WASHER
 8/20/08
 REF10
 9/11/08, SAH
 FD P.K./WASHER
 5/24/10, SAH
 SET MAG/WASHER
 7-28-10, SAH
 FD MAG/WASHER
 REF10
 8/7/17, JFO
 11/6/17, JFO
 FD MAG/WASHER
 REF10
 6/15/21, JFO
 7/14/22, TDN
 FD MAG/WASHER
 12/29/22, TDN

O.D.O.T. DISTRICT 2 SURVEY OFFICE (USE ONLY)

PERSONNEL

REFERENCE NO. 10

SHEET 16 OF 39

NOTES O'DONNELL

DATE 6/15/21

ROUTE SR 64

H.C. O'DONNELL

WEATHER SUNNY

COUNTY FULTON

R.C. NIESE

TEMP. 70°

TOWNSHIP FULTON

SECTION 2

DWG BY RHOADES

PID NO PID R/W

T 10 S R 4 E

TYPE MONUMENT MAG/WASHER

ON SURFACE - ~~BELOW~~ ON

OFFSET ϕ PAVEMENT 1.1' LT : ~~RT~~

- TO - EDGE PAVEMENT

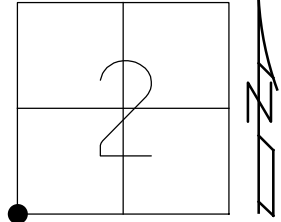
STATION: 219+14

HORZ.DATUM: NAD83 2011

GEOID: NAVD88 2018

GRID: NORTHING: 717864.311

EASTING: 1581363.364



FD DUPLEX
S/S



74.44'

ϕ SR 64

ϕ CR L

45.15'

SET
SHI

39.18'



FD
SHI

RECORD:
SET PK/WASHER
8/18/93
FD P.K./WASHER
8/20/08
REF10
9/11/08, SAH
FD P.K./WASHER
5/24/10, SAH
SET MAG/WASHER
7-28-10, SAH
FD MAG/WASHER
REF10
8/7/17, JFO
11/6/17, JFO
FD MAG/WASHER
REF10
6/15/21, JFO

O.D.O.T. DISTRICT 2 SURVEY OFFICE (USE ONLY)

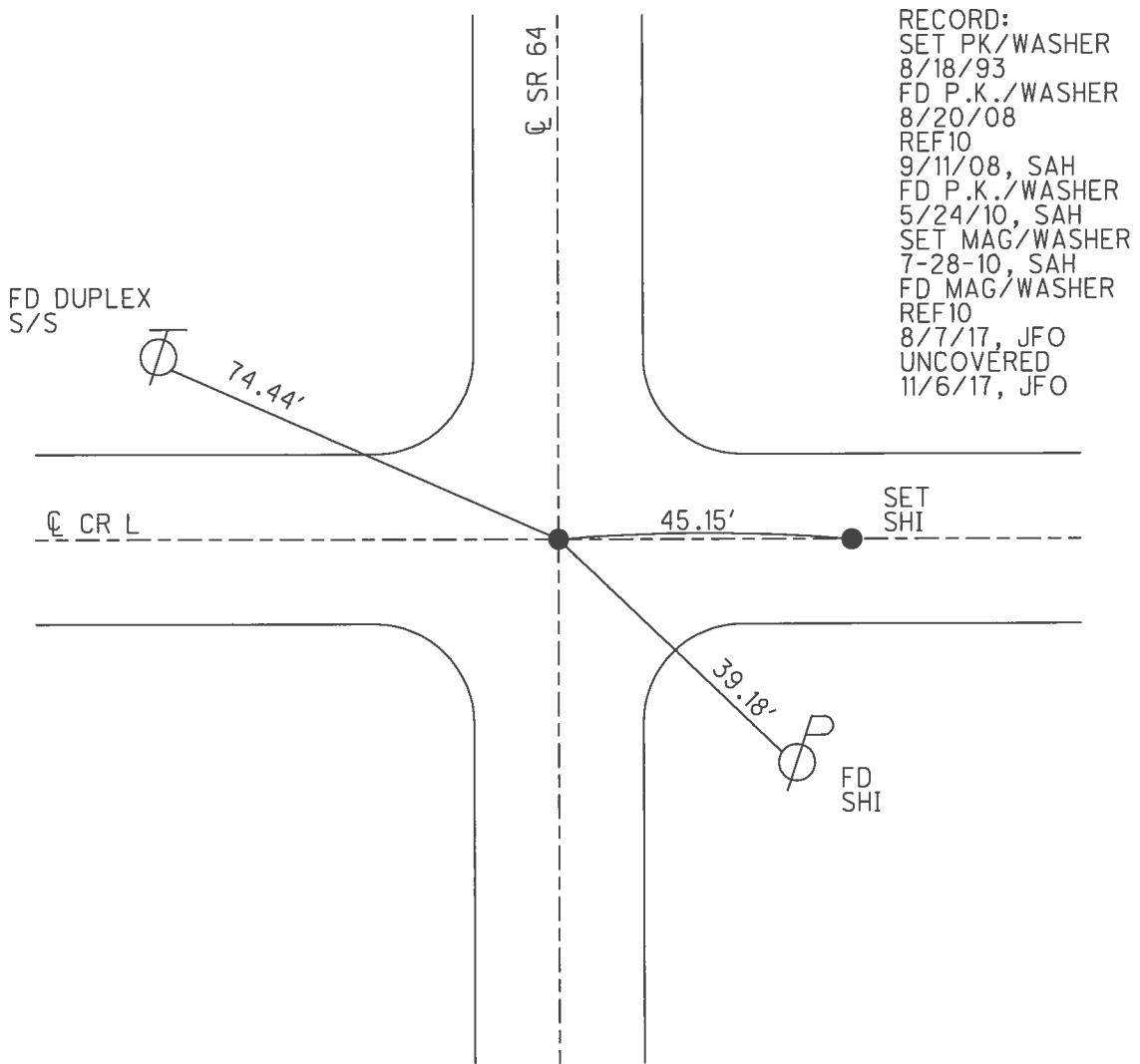
PERSONNEL _____ REFERENCE NO. 10 SHEET 16 OF 39
 NOTES RHOADES DATE 8/7/17 ROUTE SR 64
 H.C. O'DONNELL WEATHER FAIR COUNTY FULTON
 R.C. RHOADES TEMP. 65° TOWNSHIP FULTON
 _____ SECTION 2-3-10-11
 _____ T 10 S R 4 E

TYPE MONUMENT MAG/WASHER
 ON SURFACE - BELOW ON
 LEFT - ☉ PAV'T - ~~RIGHT~~ 1.1'
- TO - EDGE PAVEMENT
 S.L.M. 219+14

3	2
10	11



GRID: NOTHING: 717864.377 EASTING: 1581363.401



RECORD:
 SET PK/WASHER
 8/18/93
 FD P.K./WASHER
 8/20/08
 REF10
 9/11/08, SAH
 FD P.K./WASHER
 5/24/10, SAH
 SET MAG/WASHER
 7-28-10, SAH
 FD MAG/WASHER
 REF10
 8/7/17, JFO
 UNCOVERED
 11/6/17, JFO

FD DUPLEX
 S/S

☉ CR L

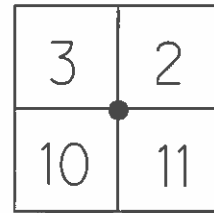
SET
 SHI

FD
 SHI

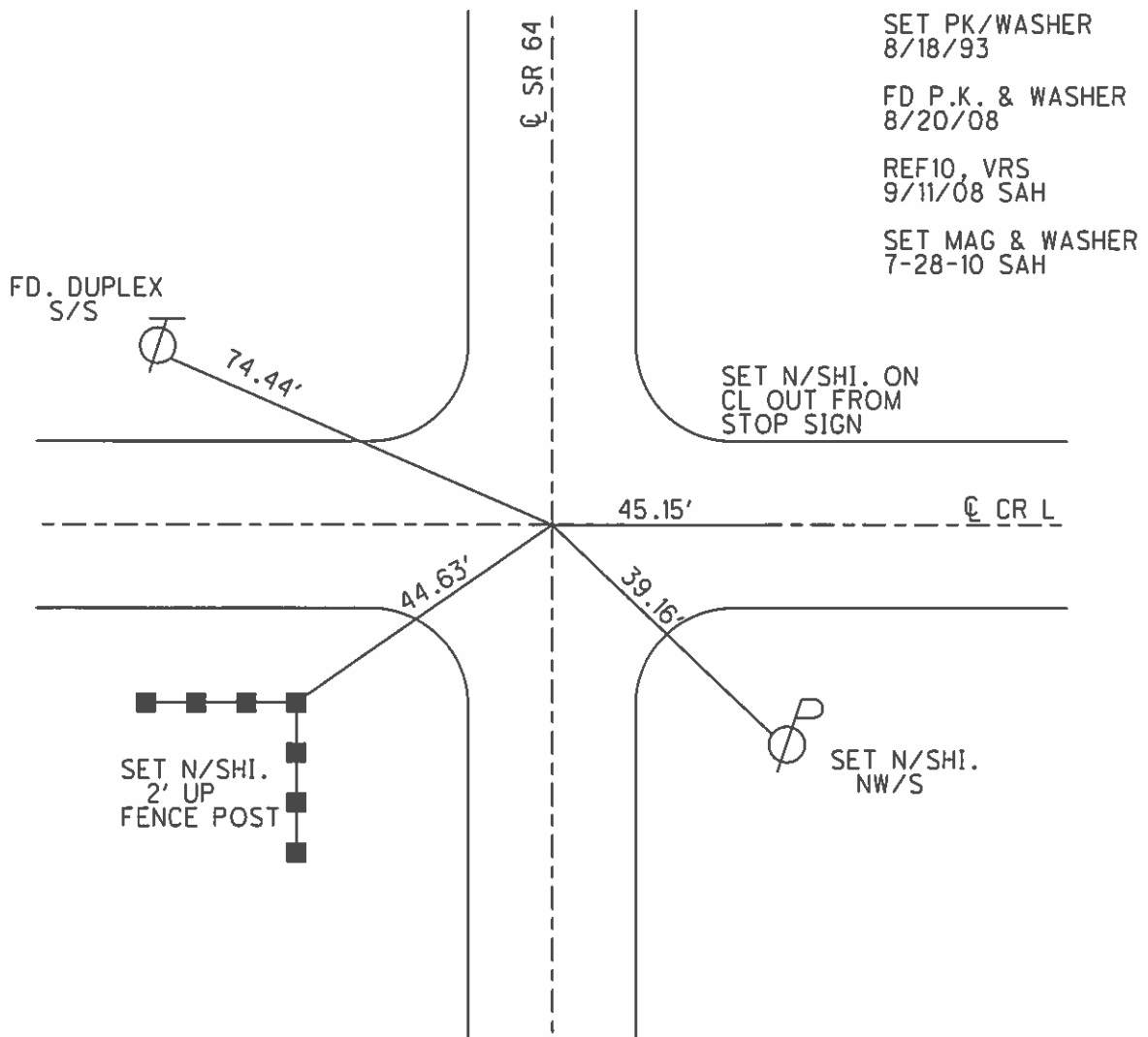
O.D.O.T. DISTRICT 2 SURVEY OFFICE (USE ONLY)

PERSONNEL _____ REFERENCE NO. 10 SHEET 16 OF 39
 NOTES HUSS DATE 5-24-10 ROUTE SR 64
 H.C. CANTERBURY WEATHER SUNNY COUNTY FULTON
 R.C. FINTEL TEMP. 82° TOWNSHIP FULTON
 _____ SECTION 2-3-10-11
 _____ T 10 S R 4 E

TYPE MONUMENT PK/WASHER
 ON SURFACE - BELOW ON
 LEFT - ☉ PAV'T - ~~RIGHT~~ 1.1' ON ☉ EAST
- TO - EDGE PAVEMENT
 S.L.M. 219+14



GRID: NOTHING: 717864.323 EASTING: 1581363.337



O.D.O.T. DISTRICT 2 SURVEY OFFICE

PERSONNEL

REFERENCE NO. 10

SHEET 13 OF 20

NOTES D. CURTIS

H.C. CORDES

R.C. CANTERBURY

ROMETO

DATE 7-27-93

WEATHER Sunny

TEMP. +88

SET P.K. & WASHER
8-18-93

ROUTE S.R. 64

COUNTY FULTON

TOWNSHIP FULTON

SECTION 2-3-10-11

T 10 S R 4 E

TYPE MONUMENT SMALL R.R. SPK.

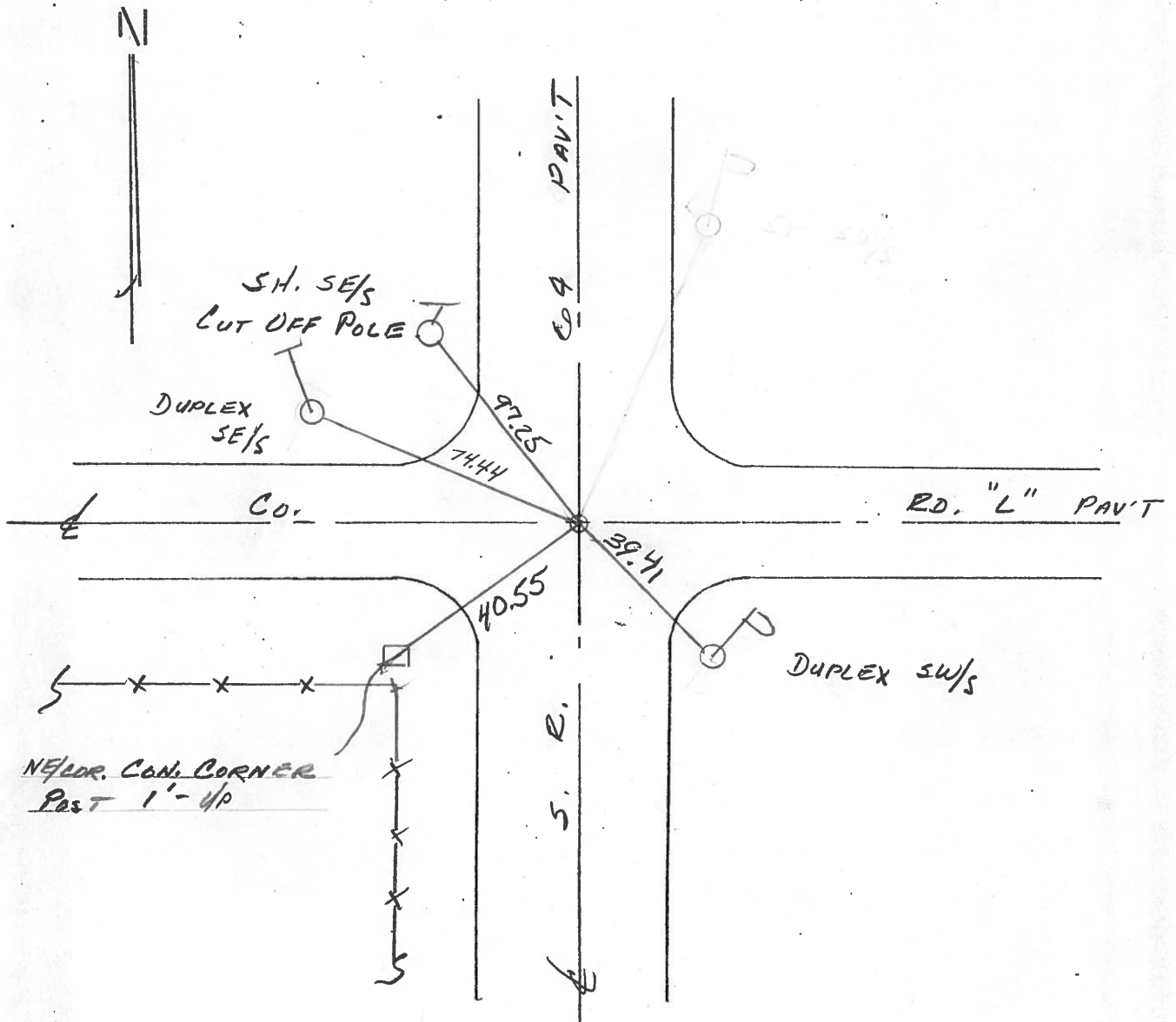
ON SURFACE - ~~BELOW~~ ON SURFACE

LEFT - ~~PAV'T.~~ - RIGHT 1.5' LT E

TO EDGE PAVEMENT

S.L.M. 219+14

3	2
10	11



ODOT. DISTRICT 2 SURVEY OFFICE

SHEET 10 OF

County Fulton S.R. 64

Date 19 April 84

Township Fulton

Weather Sunny

Section 2-3-10-11

Temp. 40

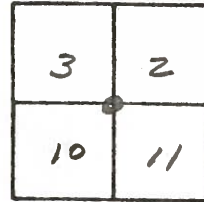
T N, R E

Personnel J. Stone

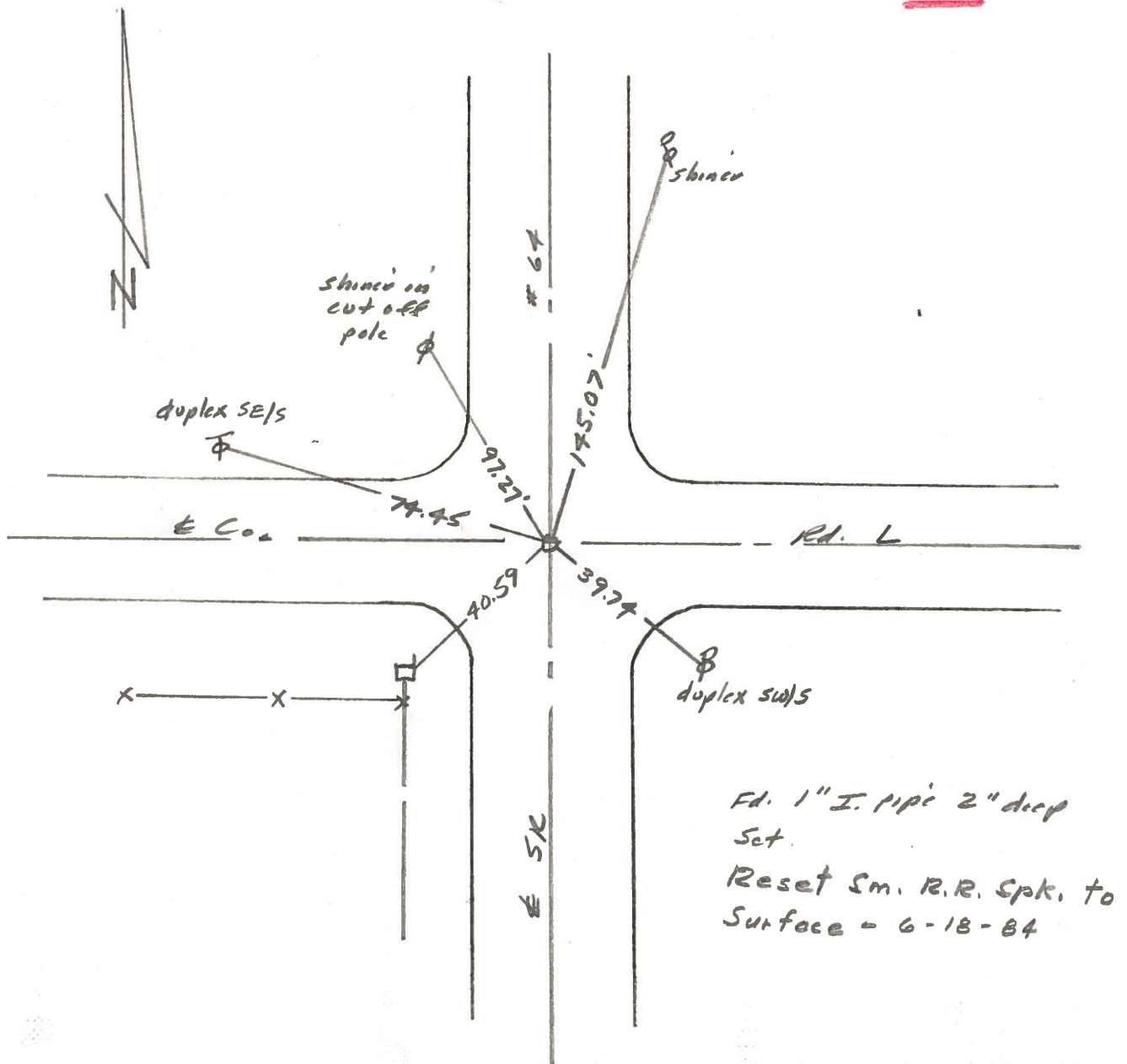
P. Neuse

R. Michalek

D. Curtis

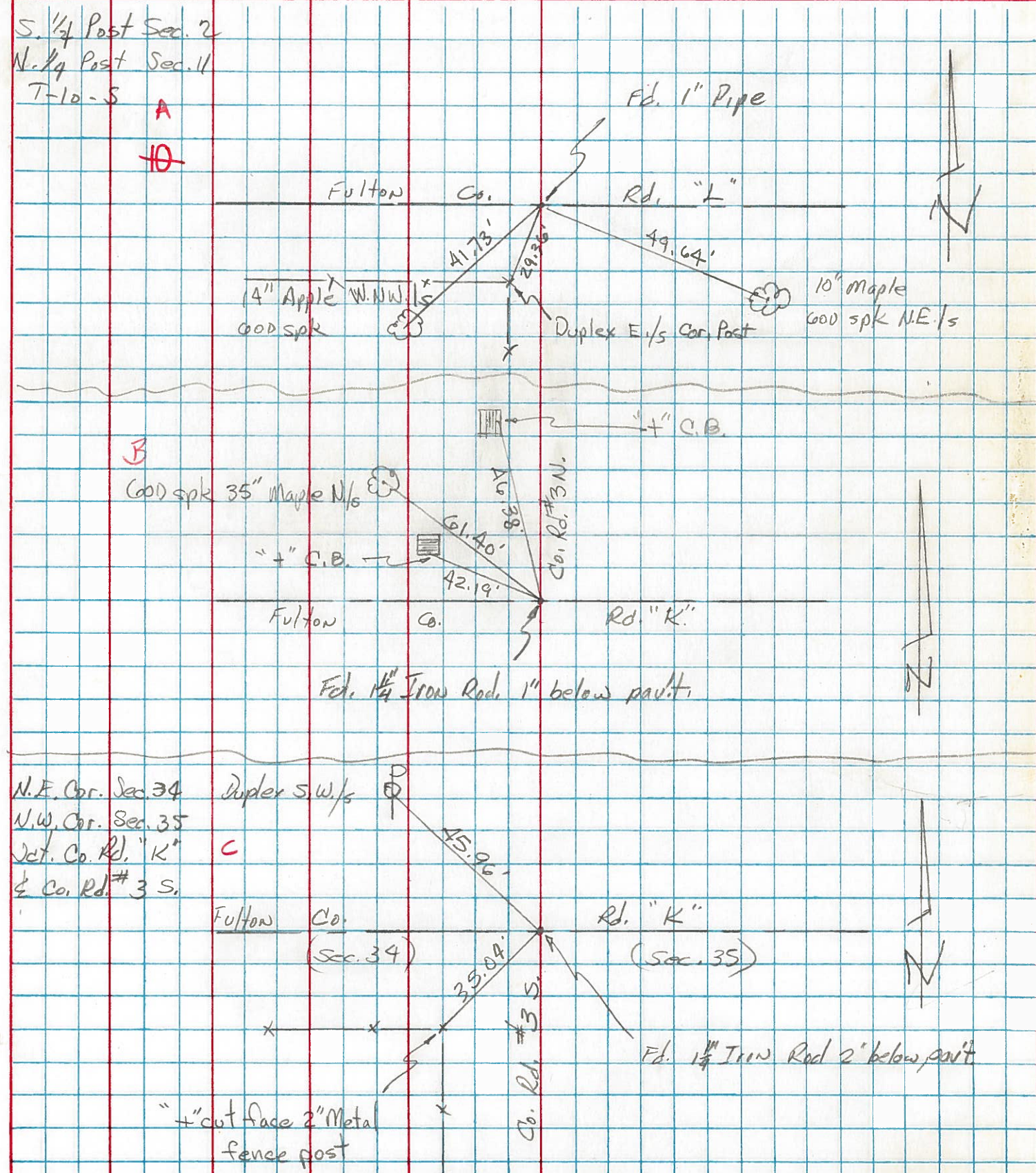


REF. NO. 10



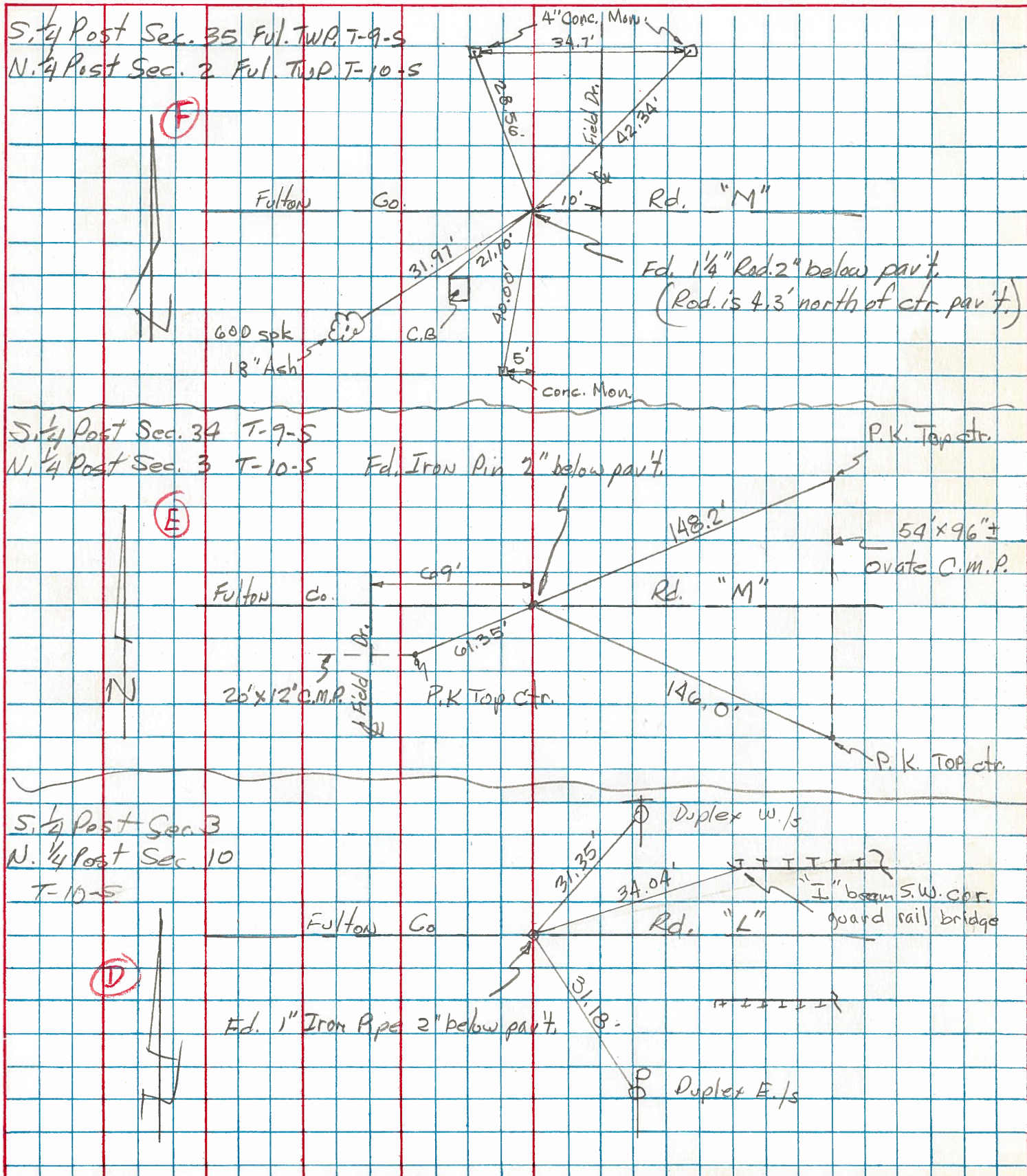
PERSONNEL	TITLE	PERSONNEL	TITLE	COUNTY	DATE	WEATHER	TEMP.
Tamsia		Boyle		Fulton	Aug 16, 1973		
Neuser				Co 4			
Granta				SEC. FULTON TWP.			
Vandy							

DESCRIPTION	LEFT	CENTER LINE	RIGHT	JOB NO.
-------------	------	-------------	-------	---------

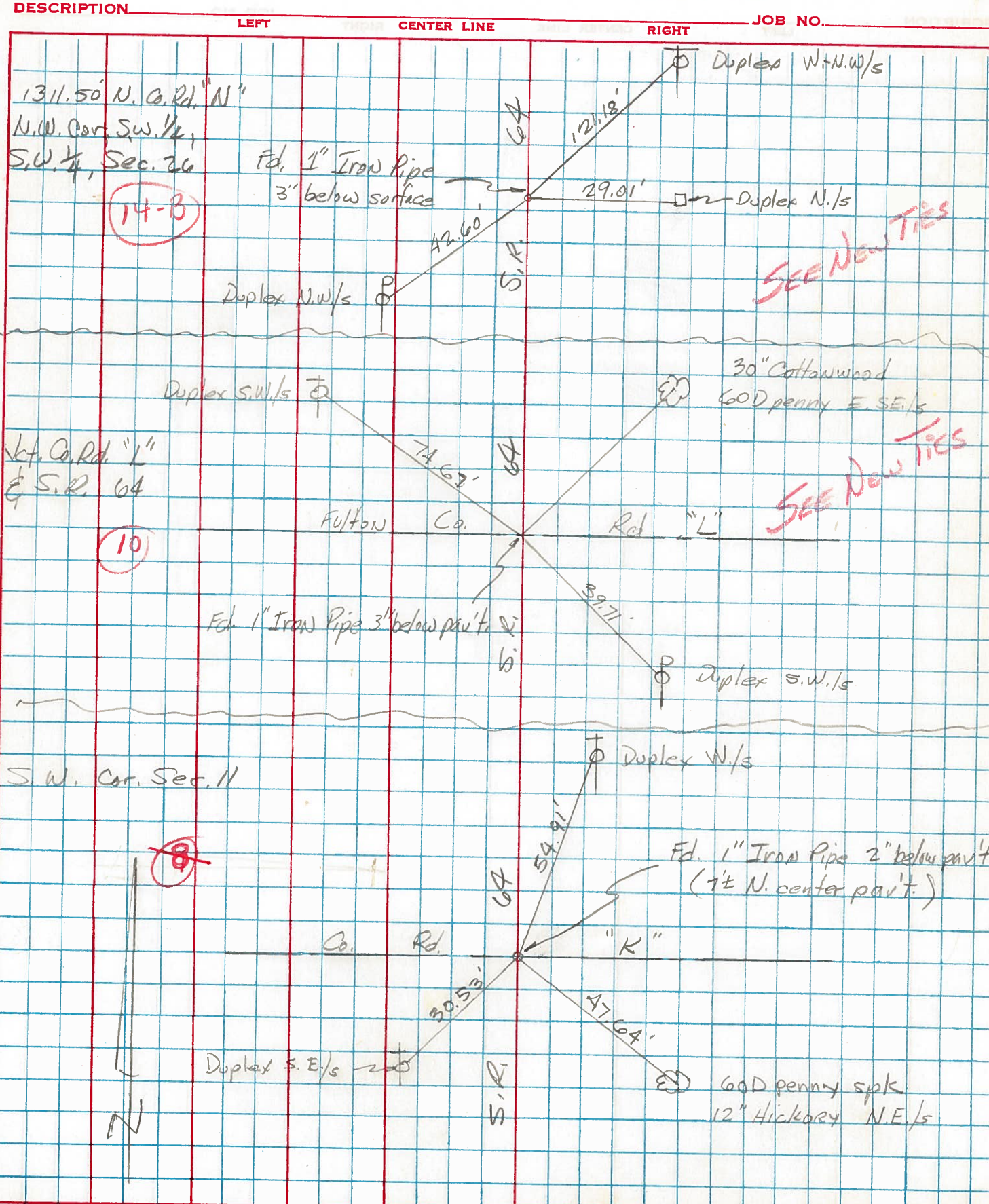


PERSONNEL	TITLE	PERSONNEL	TITLE	COUNTY	DATE	WEATHER	TEMP.
Tomsic		Boyle		Fulton	Aug 16, 1973		
Neuser				S. R. 64			
Granata				SEC. FULTON TWP.			
Vanyo							

DESCRIPTION	LEFT	CENTER LINE	RIGHT	JOB NO.
-------------	------	-------------	-------	---------



PERSONNEL	TITLE	PERSONNEL	TITLE	COUNTY	DATE	WEATHER
JOMSLC		Boyle		Fulton	Aug 10, 1973	
Neuser						
Granata				S. R. 64		
Vandy				SEC. FULTON TWP		TEMP.



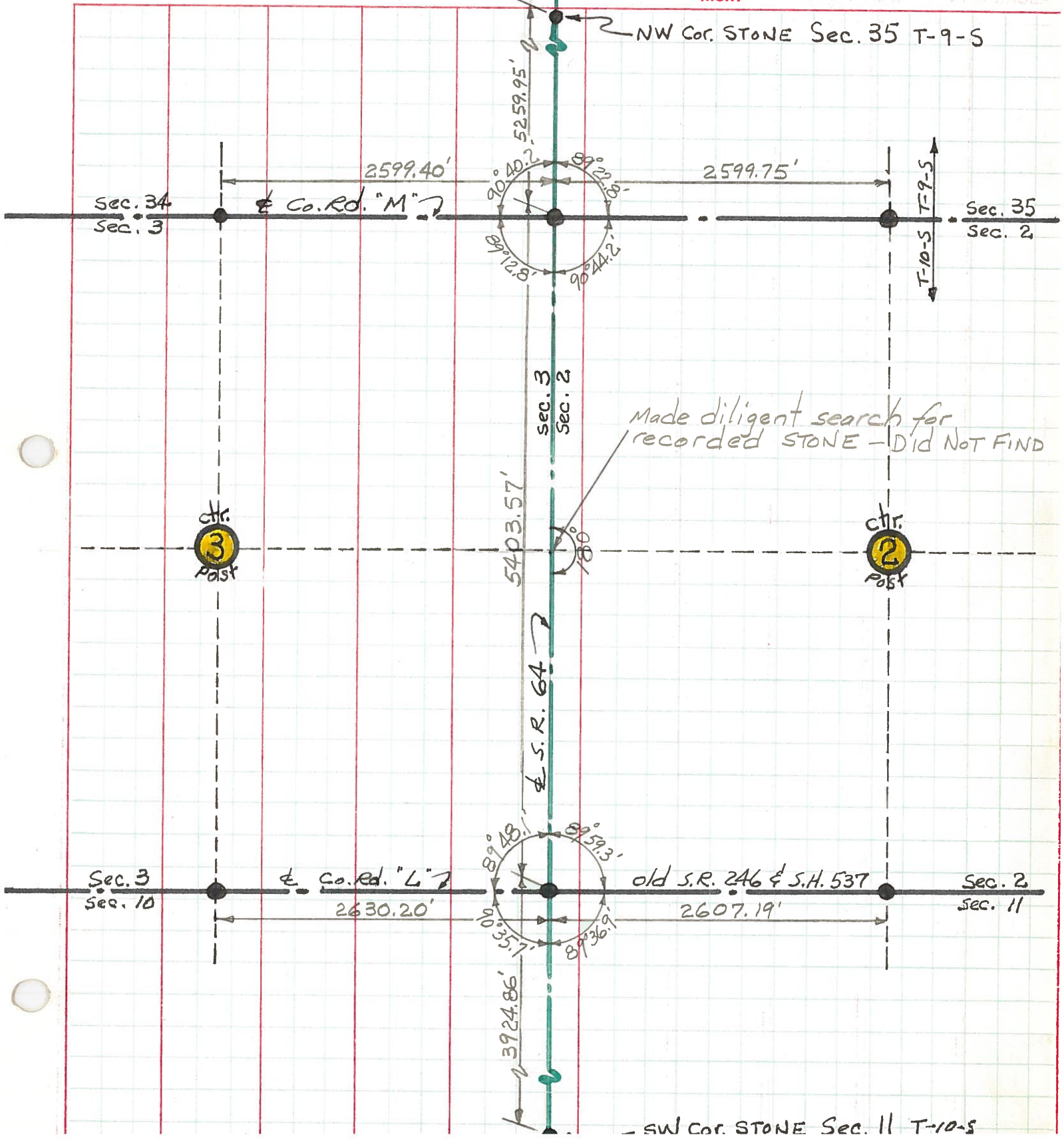
PERSONNEL TITLE PERSONNEL TITLE
 Red Beach
 Newcomb
 Knape
 Wise

COUNTY Fulton DATE Apr. 71

S. R. 64 WEATHER

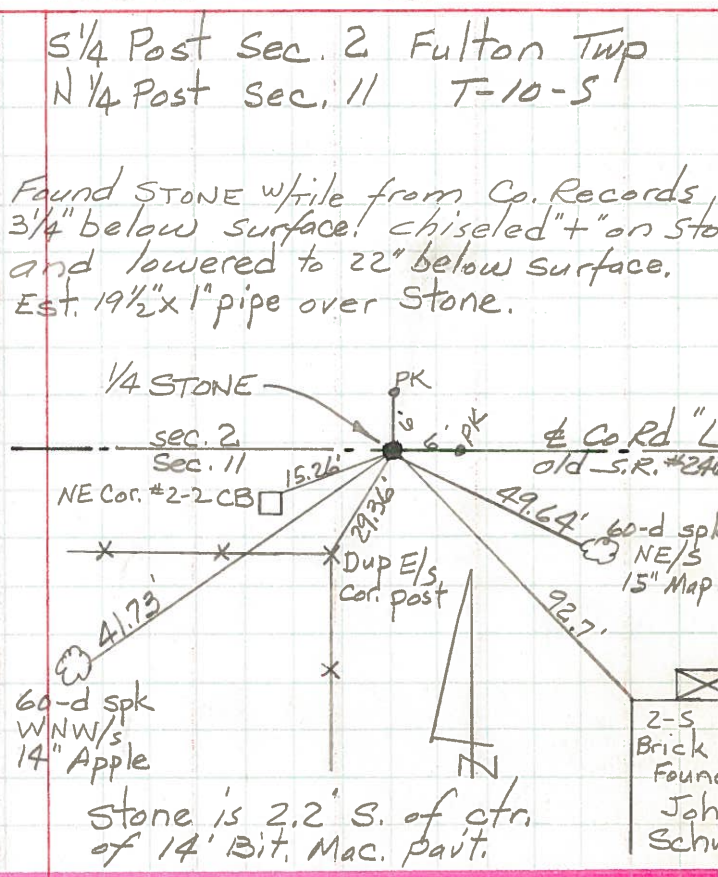
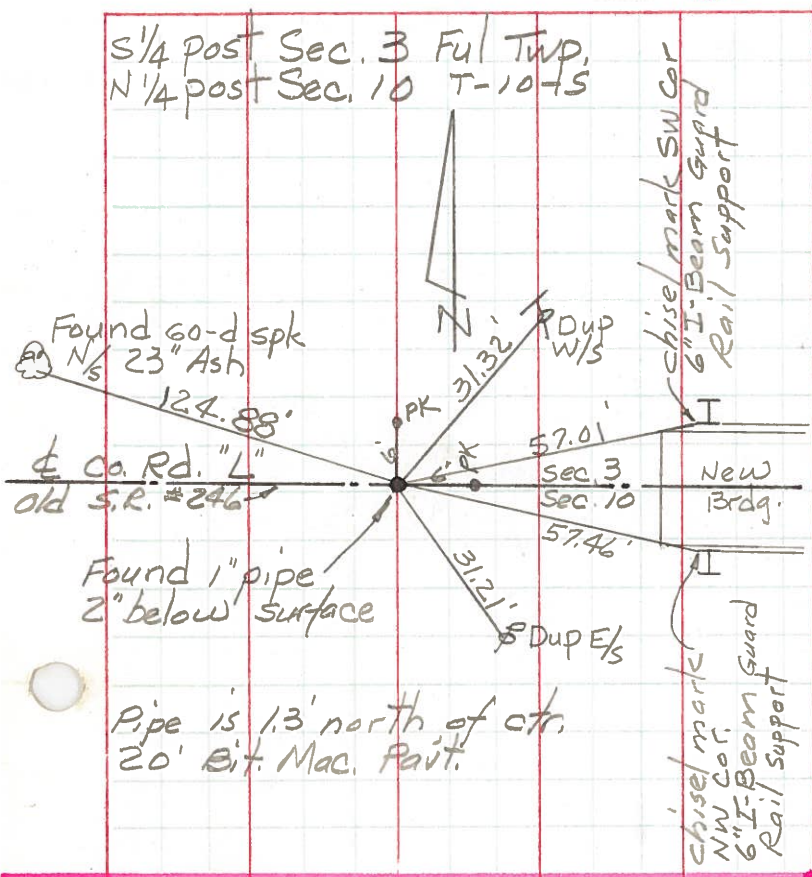
SEC. Fulton Twp. T-10-S TEMP.

DESCRIPTION ALIGNMENT & CONTROLS JOB NO.



PERSONNEL	TITLE	PERSONNEL	TITLE	COUNTY	Fulton	DATE	24 Mar '7
Red Beach				S. R.	64	WEATHER	
Newcomb				SEC.	Fulton Twp.	TEMP.	
Knape							
Wise							

CONTROL POINTS



Cor. STONE Sec. 2, 3, 10 & 11 T-10-5

