

O.D.O.T. DISTRICT 2 SURVEY OFFICE (USE ONLY)

PERSONNEL

REFERENCE NO. 11

SHEET 37 OF 59

NOTES O'DONNELL

DATE 6/15/21

ROUTE SR 64

H.C. O'DONNELL

WEATHER SUNNY

COUNTY FULTON

R.C. NIESE

TEMP. 70°

TOWNSHIP FULTON

DWG BY RHOADES

PID PAVETRAIN

SECTION 2

T 10 N R 4 E

TYPE MONUMENT MAG/WASHER

~~ON SURFACE~~ - BELOW 1"

OFFSET Q PAVEMENT 0.2' LT : ~~RT~~

9.9' TO LT EDGE PAVEMENT

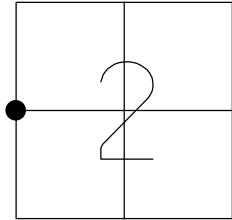
STATION: 245+61.22

HORZ. DATUM: NAD83 2011

GEOID: NAVD88 2018

GRID: NORTHING: 720503.111

EASTING: 1581353.954



USED BOLT ON  
EAST/S OF GLM



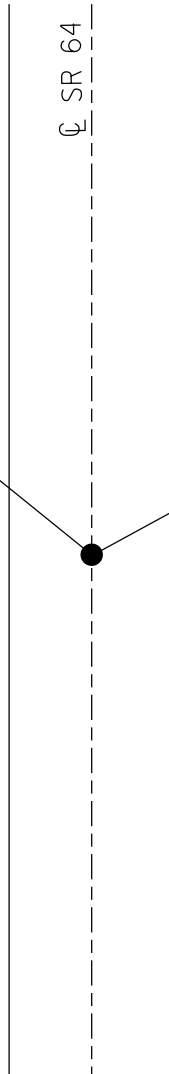
44.53'

FD "+" ON W/S  
GLV #10 PIPE  
1' UP



37.07'

RECORD:  
SET PK/WASHER  
8/18/93  
FD P.K./WASHER  
8/20/08  
REF11  
9/11/08, SAH  
FD P.K./WASHER  
5/25/10, SAH  
SET MAG/WASHER  
7-29-10, SAH  
FD MAG SPIKE  
SET BY OTERS  
1/2" DOWN  
REF11  
8/10/17, JFO  
11/7/17, JFO  
FD MAG/WASHER  
1" DOWN  
REF11  
6/15/21, JFO  
7/14/22, TDN  
FD MAG SPIKE  
1" DOWN  
12/29/22, TDN



O.D.O.T. DISTRICT 2 SURVEY OFFICE (USE ONLY)

PERSONNEL \_\_\_\_\_ REFERENCE NO. 11 SHEET 17 OF 39  
 NOTES O'DONNELL DATE 6/15/21 ROUTE SR 64  
 H.C. O'DONNELL WEATHER SUNNY COUNTY FULTON  
 R.C. NIESE TEMP. 70° TOWNSHIP FULTON  
 DWG BY RHOADES PID NO PID R/W SECTION 2  
 T 10 S R 4 E

TYPE MONUMENT MAG/WASHER

~~ON SURFACE~~ - BELOW 1"

OFFSET  $\varnothing$  PAVEMENT 0.2' LT : ~~RT~~

9.9' TO LT EDGE PAVEMENT

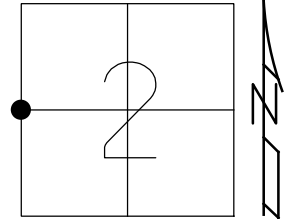
STATION: 245+61.22

HORZ.DATUM: NAD83 2011

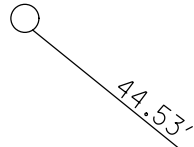
GEOID: NAVD88 2018

GRID: NORTHING: 720503.111

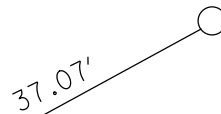
EASTING: 1581353.954



USED BOLT ON  
EAST/S OF GLM

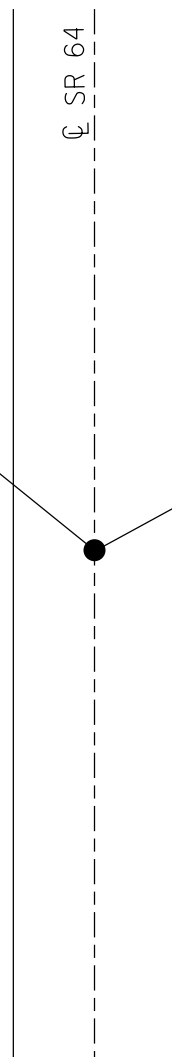


FD "+" ON W/S  
GLV #10 PIPE  
1' UP



$\varnothing$  SR 64

RECORD:  
 SET PK/WASHER  
 8/18/93  
 FD P.K./WASHER  
 8/20/08  
 REF11  
 9/11/08, SAH  
 FD P.K./WASHER  
 5/25/10, SAH  
 SET MAG/WASHER  
 7-29-10, SAH  
 FD MAG SPIKE  
 SET BY OTERS  
 1/2" DOWN  
 REF11  
 8/10/17, JFO  
 11/7/17, JFO  
 FD MAG/WASHER  
 1" DOWN  
 REF11  
 6/15/21, JFO



O.D.O.T. DISTRICT 2 SURVEY OFFICE (USE ONLY)

PERSONNEL \_\_\_\_\_ REFERENCE NO. 11 SHEET 17 OF 39

NOTES RHOADES DATE 8/10/17 ROUTE SR 64  
 H.C. O'DONNELL WEATHER SUNNY COUNTY FULTON  
 R.C. RHOADES TEMP. 71° TOWNSHIP FULTON  
 \_\_\_\_\_ SECTION 2  
 \_\_\_\_\_ T 10 S R 4 E

TYPE MONUMENT MAG SPIKE

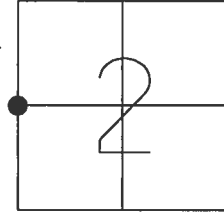
ON SURFACE - ~~BELOW~~ ON

LEFT - CL PAV'T - ~~RIGHT~~ 0.2'

9.9' TO LT EDGE PAVEMENT

S.L.M. 245+61.22

GRID: NOTHING: 720503.080 EASTING: 1581353.910



USED BOLT ON  
EAST/S OF GLM



44.53'

CL SR 64



FD "+" ON W/S  
GLV #10 PIPE  
1' UP



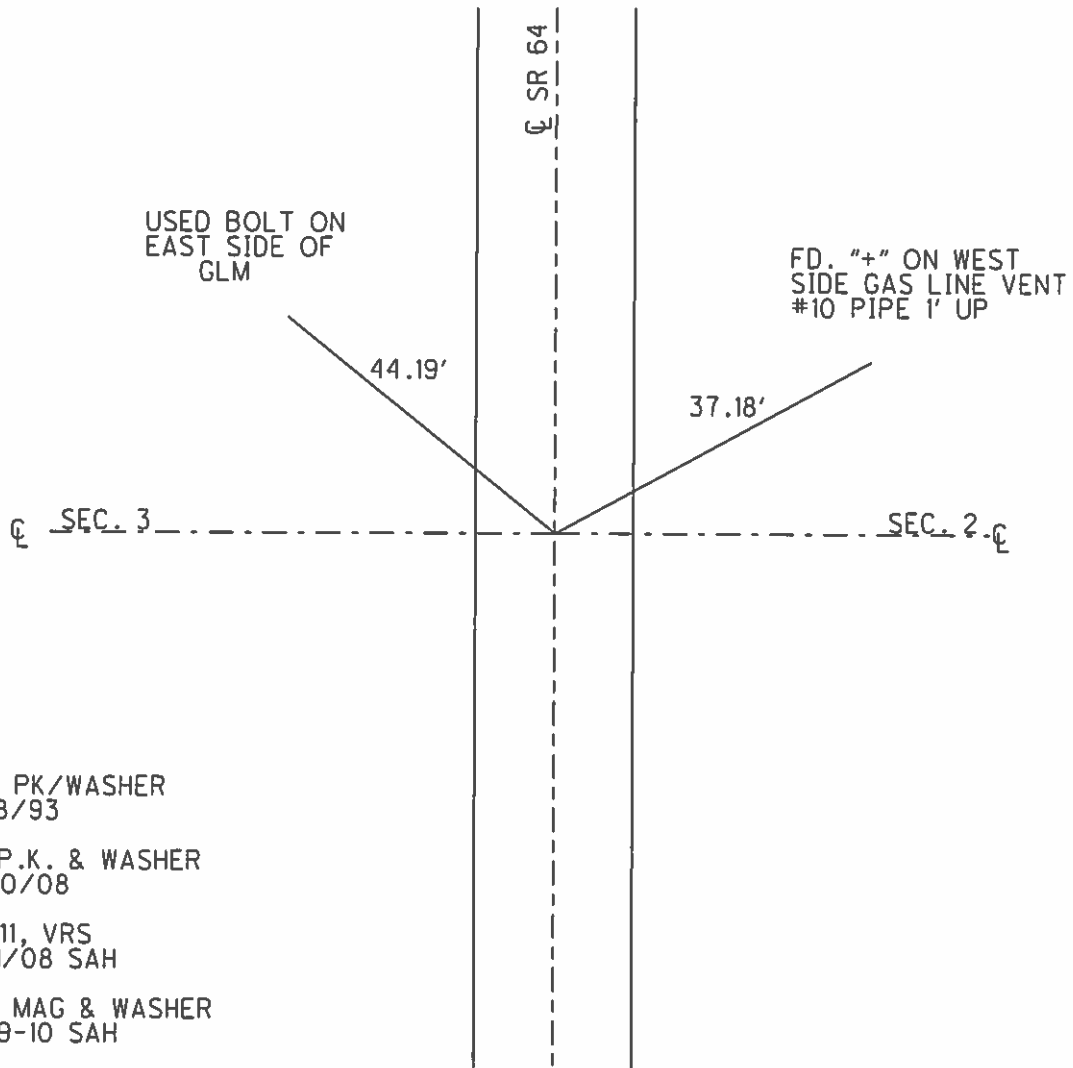
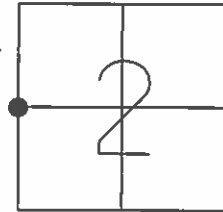
37.07'

RECORD:  
 SET PK/WASHER  
 8/18/93  
 FD P.K./WASHER  
 8/20/08  
 REF11  
 9/11/08, SAH  
 FD P.K./WASHER  
 5/25/10, SAH  
 SET MAG/WASHER  
 7-29-10, SAH  
 FD MAG SPIKE  
 SET BY OTERS  
 1/2" DOWN  
 REF11  
 8/10/17, JFO  
 UNCOVERED  
 11/7/17, JFO

O.D.O.T. DISTRICT 2 SURVEY OFFICE (USE ONLY)

PERSONNEL \_\_\_\_\_ REFERENCE NO. 11 SHEET 17 OF 39  
 NOTES HUSS DATE 5-25-10 ROUTE SR 64  
 H.C. CANTERBURY WEATHER SUNNY COUNTY FULTON  
 R.C. FINTEL TEMP. 83° TOWNSHIP FULTON  
 \_\_\_\_\_ SECTION 2  
 \_\_\_\_\_ T 10 S R 4 E

TYPE MONUMENT \_\_\_\_\_ PK/WASHER \_\_\_\_\_  
 ON SURFACE - ~~BELOW~~ \_\_\_\_\_ ON \_\_\_\_\_  
 LEFT - ☉ PAV'T - ~~RIGHT~~ \_\_\_\_\_ 0.2'  
9.9' TO LT EDGE PAVEMENT  
 S.L.M. 255+61.22  
 GRID: NOTHING: 720503.091 EASTING: 1581353.683



SET PK/WASHER  
8/18/93  
 FD P.K. & WASHER  
8/20/08  
 REF11, VRS  
9/11/08 SAH  
 SET MAG & WASHER  
7-29-10 SAH

O.D.O.T. DISTRICT 2 SURVEY OFFICE

PERSONNEL

REFERENCE NO. 11

SHEET 14 OF 20

NOTES D. CURTIS

H.C. CORDES

R.C. CANTERBURY

ROMETO

DATE 7-27-93

WEATHER Sunny

TEMP. +90

SET P.K. + WASHER

8-18-93

ROUTE S. R. 64

COUNTY FULTON

TOWNSHIP FULTON

SECTION 2-3

T10 S R 4 E

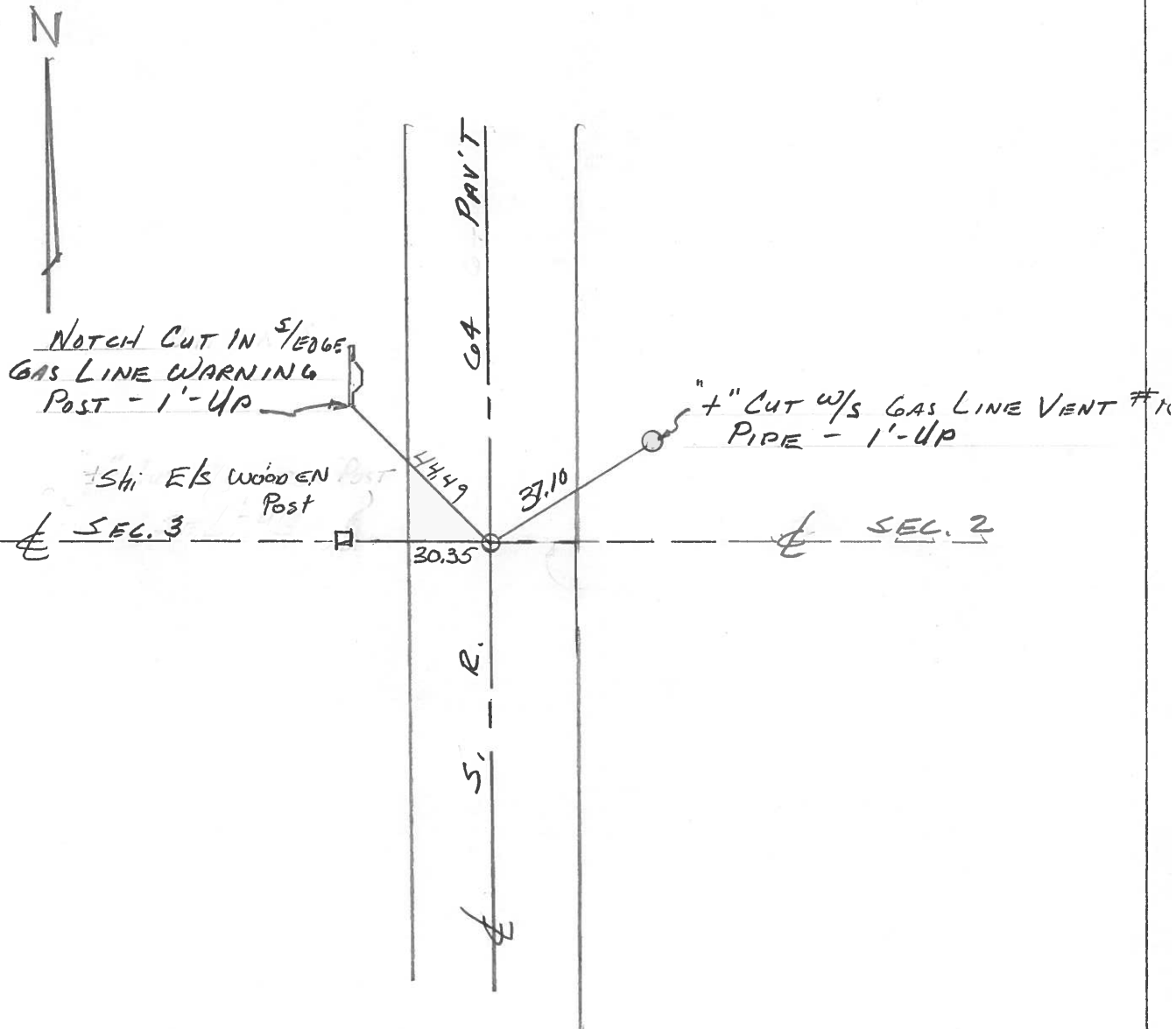
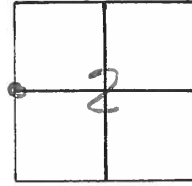
TYPE MONUMENT SMALL P.R. SPK.

ON SURFACE - ~~BELOW~~ ON SURFACE

LEFT - ~~PAV'T.~~ ON PAV'T.

9.9 TO 4.1 EDGE PAVEMENT

S.L.M. 245 + 60



ODOT. DISTRICT 2 SURVEY OFFICE

SHEET 11 OF

County Fulton S.R. 64

Date 19 April 84

Township Fulton

Weather Sunny

Section 2-3

Temp. 41°

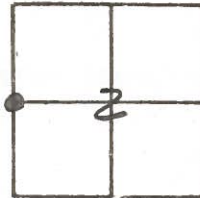
T N, R E

Personnel I. Stone

P. Neuser

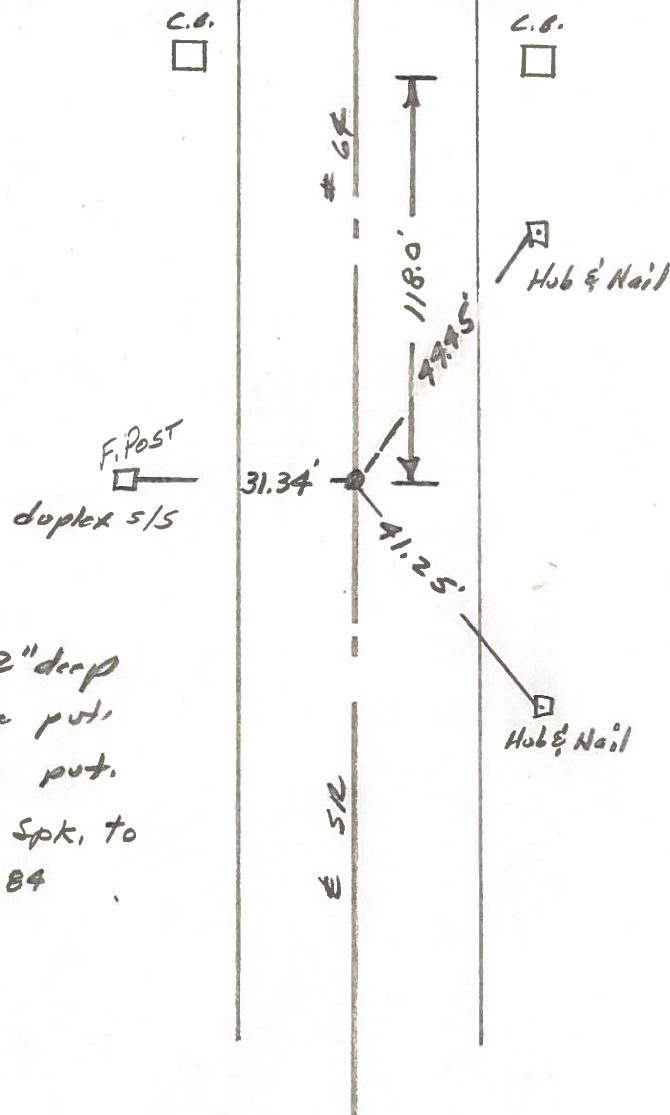
R. Michalak

D. Curtis



245+25

REF. No. 11



Fd. 1" I. pipe 2" deep  
 9.6' to W. edge put.  
 8.9' to E. edge put.  
 Reset Sm. R.R. Spk. to  
 Surface - 6-18-84



PERSONNEL TITLE PERSONNEL TITLE  
 Tomsic \_\_\_\_\_ Granata \_\_\_\_\_  
 Neuser \_\_\_\_\_  
 Vango \_\_\_\_\_  
 Boyle \_\_\_\_\_

COUNTY Fulton DATE Aug. -60-73  
 S. R. 64 WEATHER cloudy  
 SEC. FULTON Twp TEMP. 80°

DESCRIPTION Reference LEFT CENTER LINE RIGHT JOB NO. 073010

