

O.D.O.T. DISTRICT 2 SURVEY OFFICE (USE ONLY)

PERSONNEL

REFERENCE NO. 14 B

SHEET 42 OF 59

NOTES RHOADES

DATE 7/14/22

ROUTE SR 64

H.C. NIESE

WEATHER HAZE

COUNTY FULTON

R.C. WHITAKER

TEMP. 74°

TOWNSHIP FULTON

SECTION 26

DWG BY RHOADES

PID PAVETRAIN

T 9 N R 4 E

TYPE MONUMENT MAG/WASHER

ON SURFACE - ~~BELOW~~ ON

OFFSET 0.5' LT : ~~RT~~

9' TO LT EDGE PAVEMENT

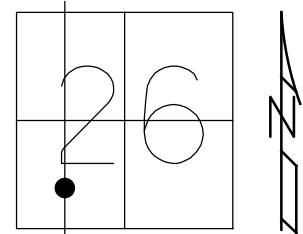
STATION: 361+56.98

HORZ.DATUM: NAD83 2011

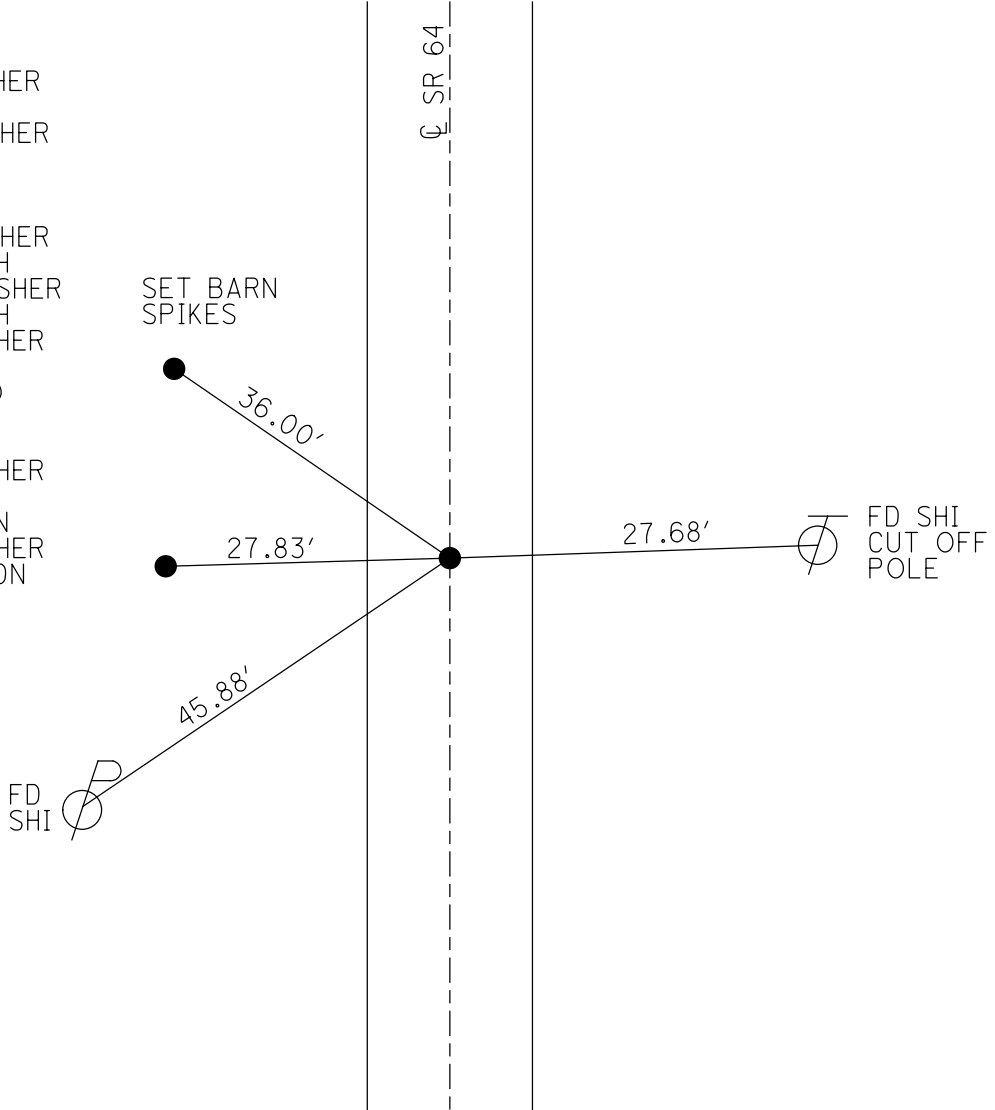
GEOID: NAVD88 2018

GRID: NORTHING: 729817.220

EASTING: 1582606.687



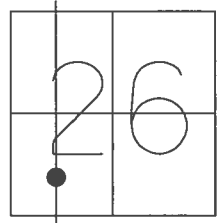
RECORD:
 SET PK/WASHER
 8/18/93
 FD P.K./WASHER
 8/20/08
 REFB14, VRS
 9/16/08 SAH
 FD P.K./WASHER
 5/25/10, SAH
 SET MAG/WASHER
 7/29/10, SAH
 FD MAG/WASHER
 REFB14
 8/10/17, JFO
 UNCOVERED
 11/7/17, JFO
 FD MAG/WASHER
 REFB14
 7/14/22, TDN
 FD MAG/WASHER
 12/29/22, TDN



O.D.O.T. DISTRICT 2 SURVEY OFFICE (USE ONLY)

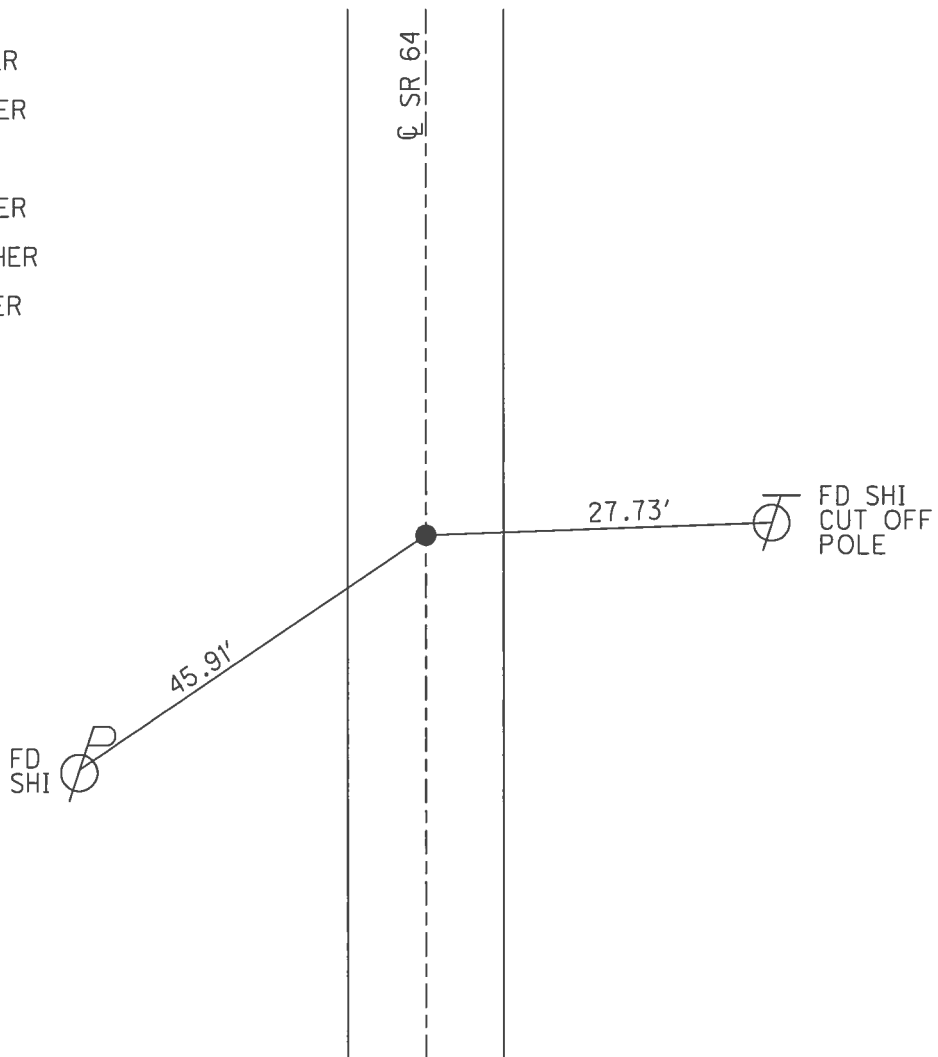
PERSONNEL _____ REFERENCE NO. 14 B SHEET 22 OF 39
 NOTES RHOADES DATE 8/10/17 ROUTE SR 64
 H.C. O'DONNELL WEATHER SUNNY COUNTY FULTON
 R.C. RHOADES TEMP. 71° TOWNSHIP AMBOY
 _____ SECTION 26
 _____ T 9 S R 4 E

TYPE MONUMENT _____ MAG/WASHER _____
 ON SURFACE - ~~BELOW~~ ON _____
 LEFT - ☉ PAV'T - ~~RIGHT~~ 0.5'
9.0' TO LT EDGE PAVEMENT
 S.L.M. 361+56.98



GRID: NOTHING: 729817.220 EASTING: 1582606.687

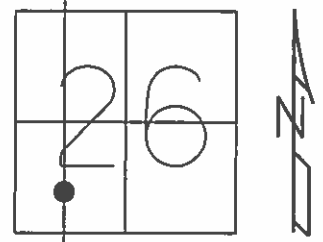
RECORD:
 SET PK/WASHER
 8/18/93
 FD P.K./WASHER
 8/20/08
 REFB14, VRS
 9/16/08 SAH
 FD P.K./WASHER
 5/25/10, SAH
 SET MAG/WASHER
 7/29/10, SAH
 FD MAG/WASHER
 REFB14
 8/10/17, JFO
 UNCOVERED
 11/7/17, JFO



O.D.O.T. DISTRICT 2 SURVEY OFFICE (USE ONLY)

PERSONNEL _____ REFERENCE NO. 14 B SHEET 22 OF 39
 NOTES CANTERBURY DATE 5-25-10 ROUTE SR 64
 H.C. FINTEL WEATHER SUNNY COUNTY FULTON
 R.C. CANTERBURY TEMP. 83° TOWNSHIP AMBOY
 _____ SECTION 26
 _____ T 9 S R 4 E

TYPE MONUMENT _____ PK/WASHER _____
 ON SURFACE - ~~BELOW~~ ON _____
 LEFT - ☉ PAV'T - ~~RIGHT~~ 0.5'
9.0' TO LT EDGE PAVEMENT
 S.L.M. 361+56.98
 GRID: NOTHING: 729817.265 EASTING: 1582606.633

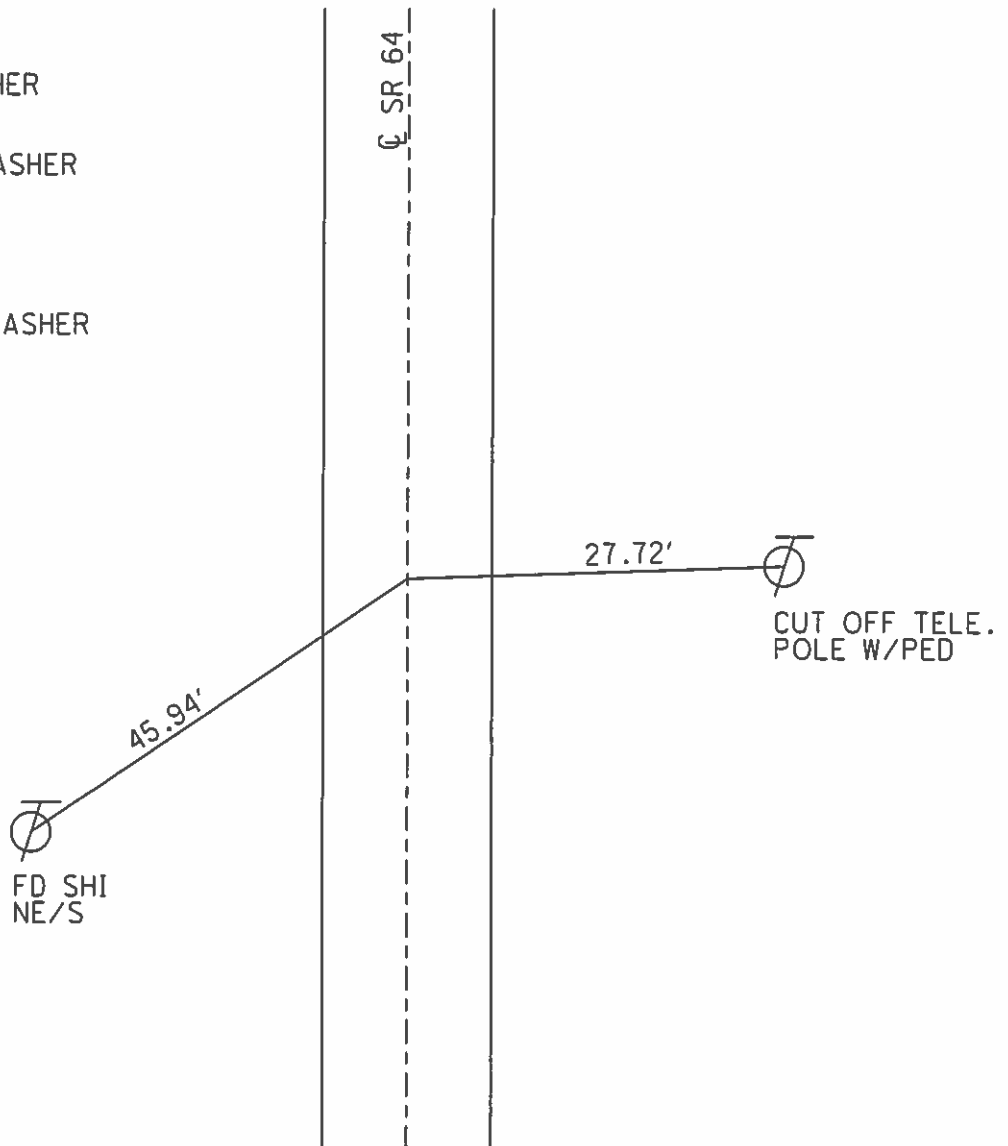


SET PK/WASHER
8/18/93

FD P.K. & WASHER
8/20/08

REFB14, VRS
9/16/08 SAH

SET MAG & WASHER
7-29-10 SAH



O.D.O.T. DISTRICT 2 SURVEY OFFICE

PERSONNEL

REFERENCE NO. 14-B

SHEET 17 OF 20

NOTES D. CURTIS

H.C. CORDES

R.C. CANTERBURY

ROMERO

DATE 7-27-93

WEATHER Sunny

TEMP. +90

*SET P.K. & WASHER
8-18-93*

ROUTE S.R. 64

COUNTY FULTON

TOWNSHIP AMBOY

SECTION 26

T 9 S R 4 E

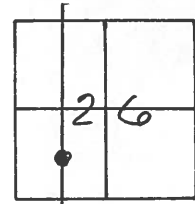
TYPE MONUMENT SMALL R.R. SPK.

ON SURFACE - ~~BELOW~~ ON SURFACE

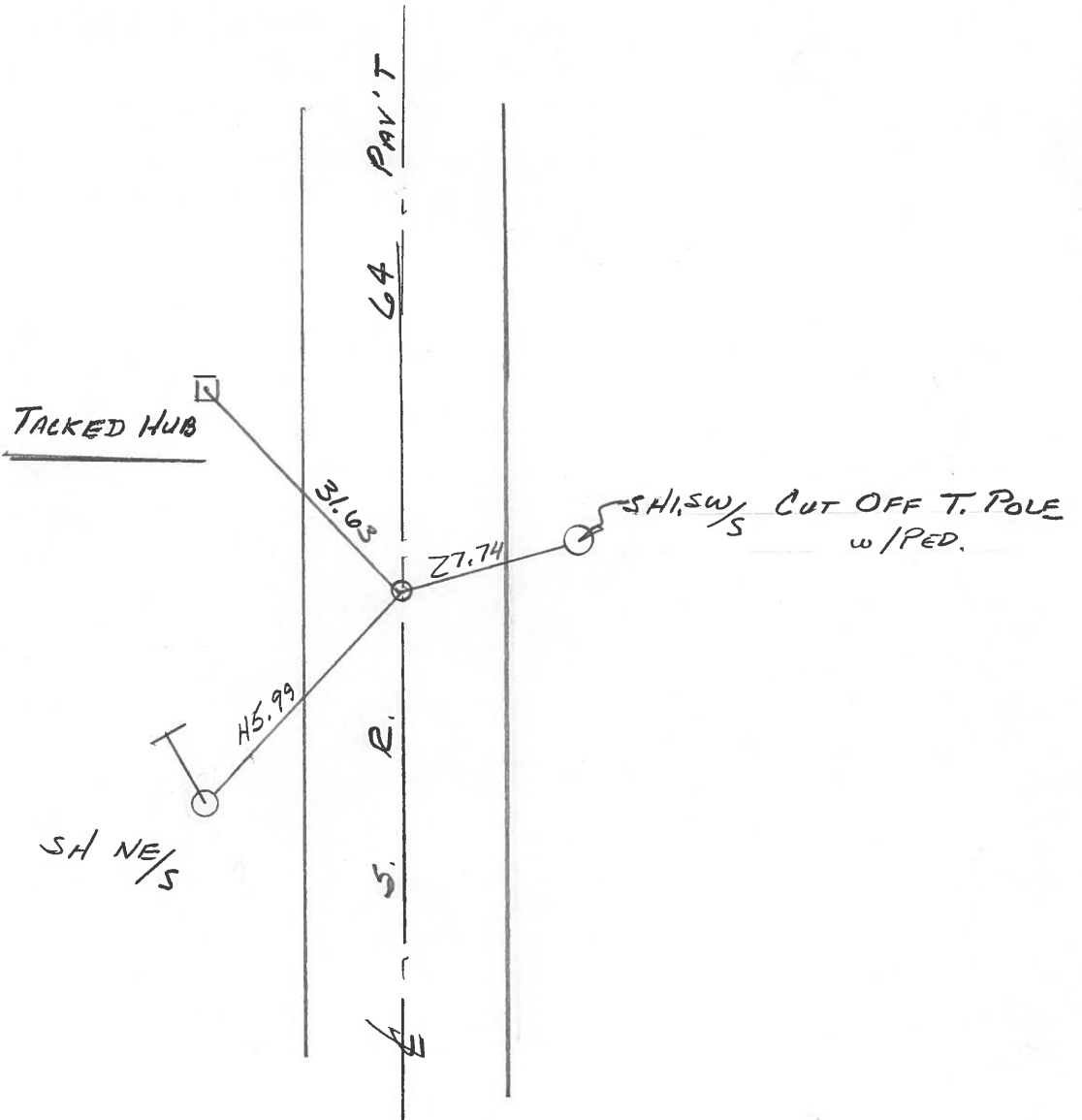
LEFT - ~~PAV'T.~~ RIGHT 0.5' Lt. OF E

9.4 TO Lt EDGE PAVEMENT

S.L.M. 349+79

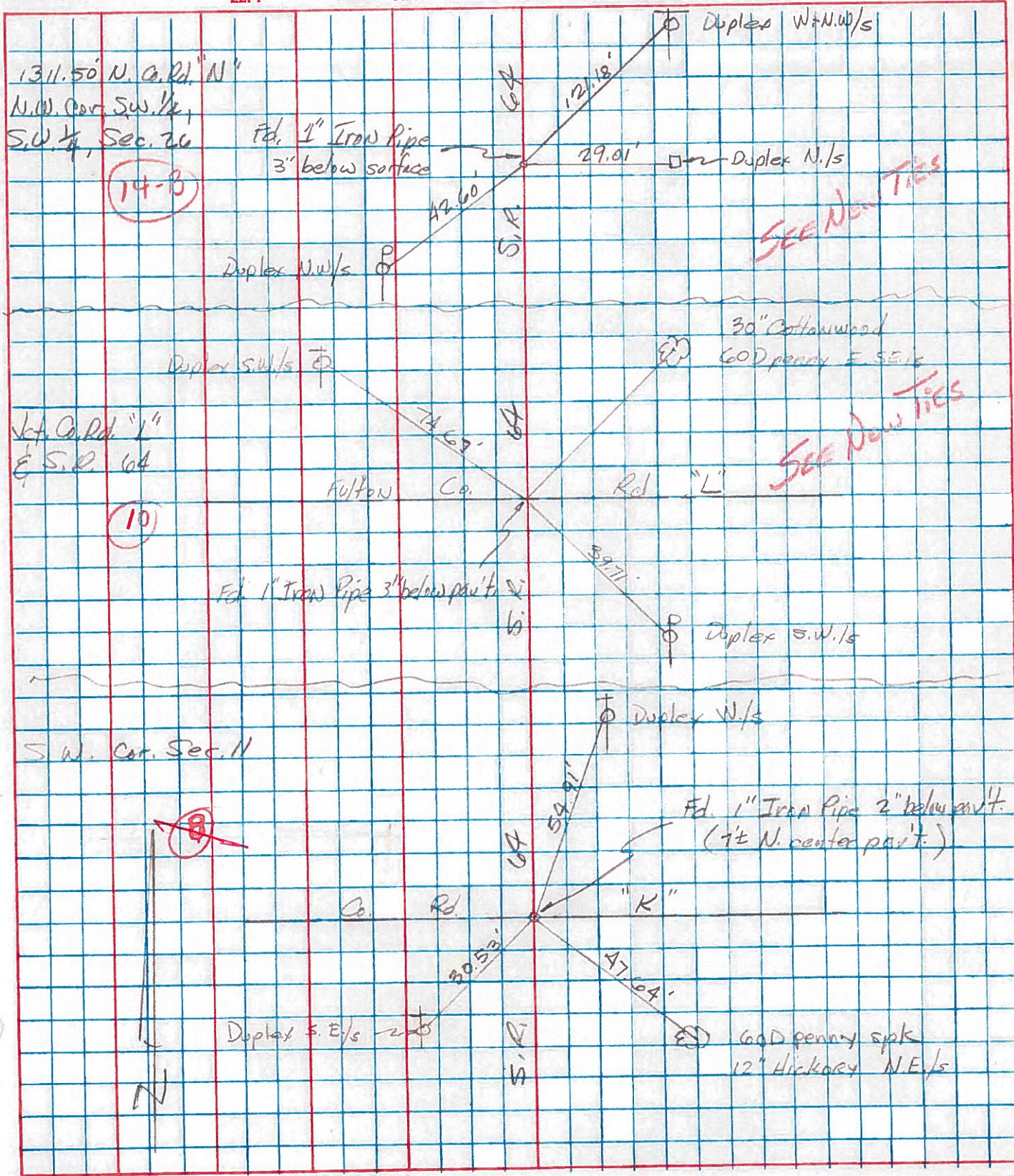


N



PERSONNEL	TITLE	PERSONNEL	TITLE	COUNTY	Fulton	DATE	Aug 10, 1973
Tom Sir		Boyle		S. R.	64	WEATHER	
Neusel				SEC.	FULTON TWP	TEMP.	
Granata							
Vandy							

DESCRIPTION _____ LEFT _____ CENTER LINE _____ RIGHT _____ JOB NO. _____



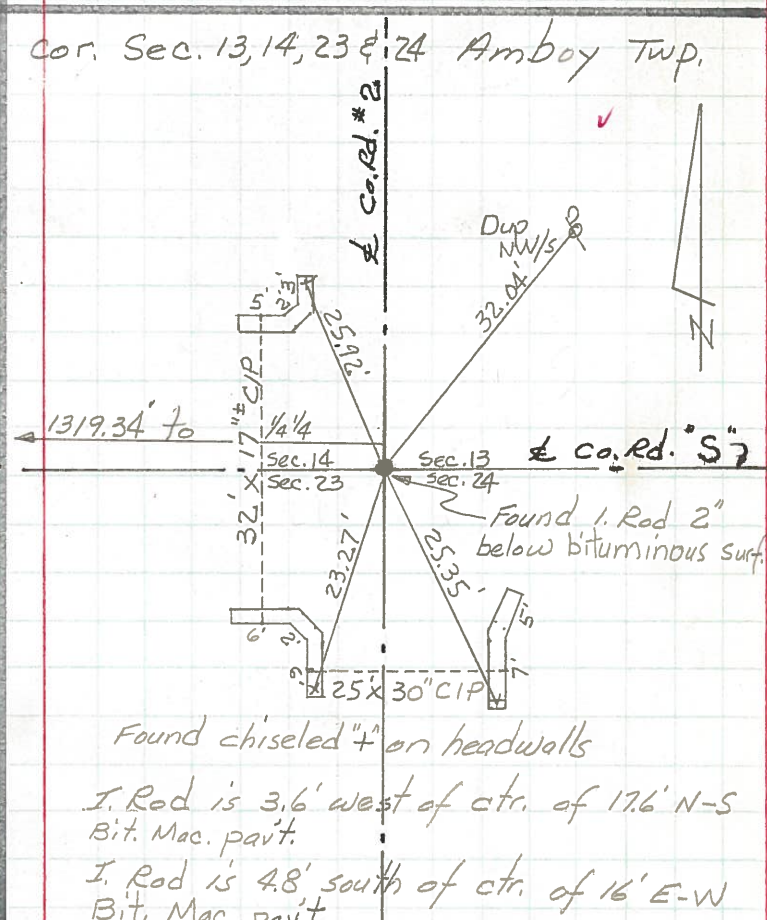
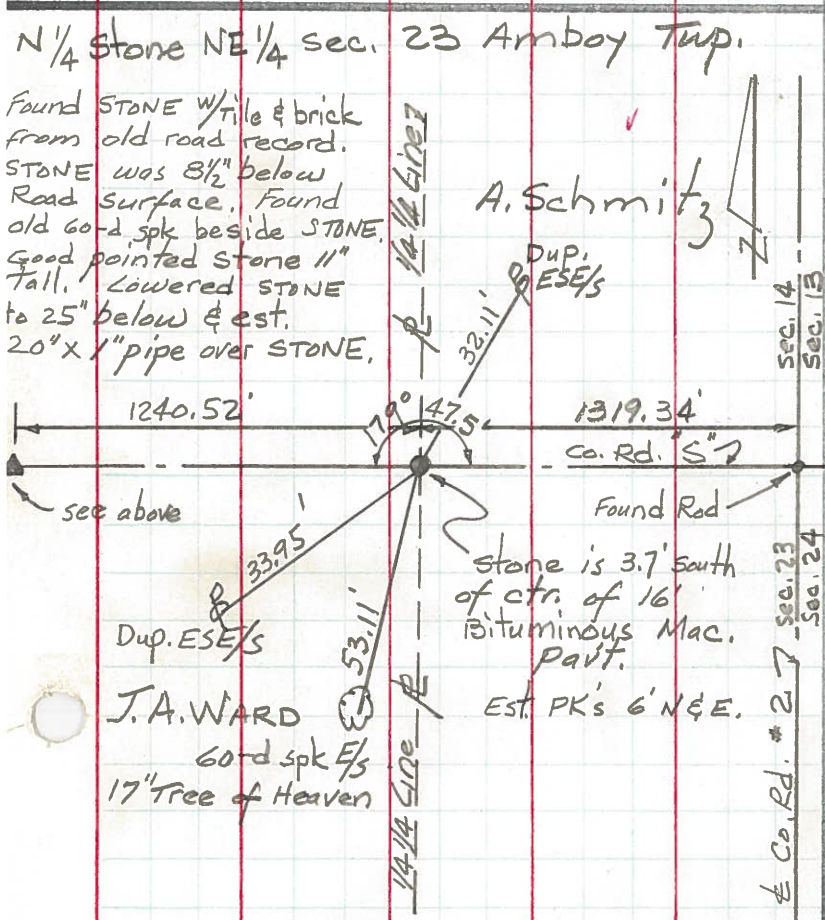
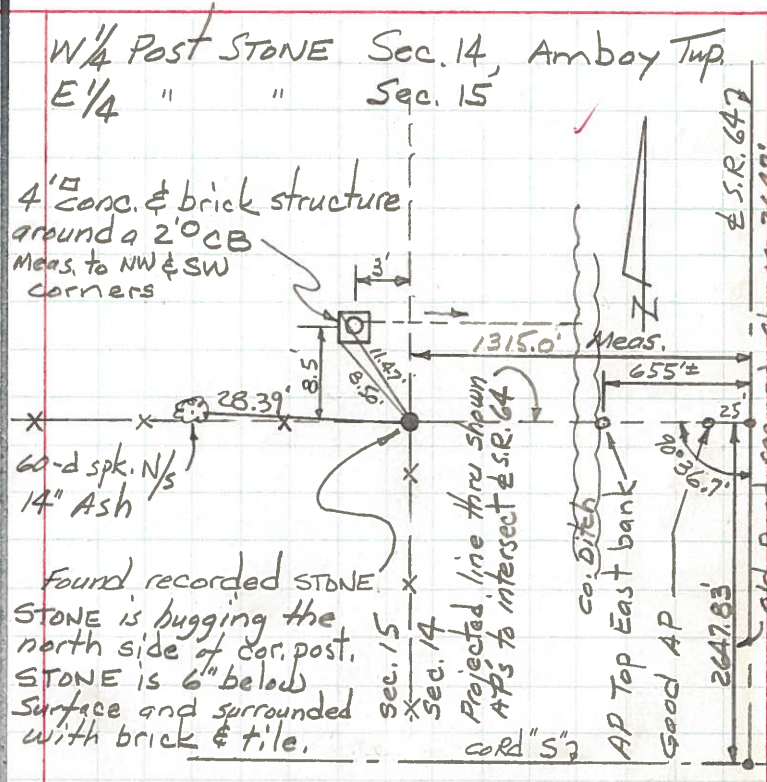
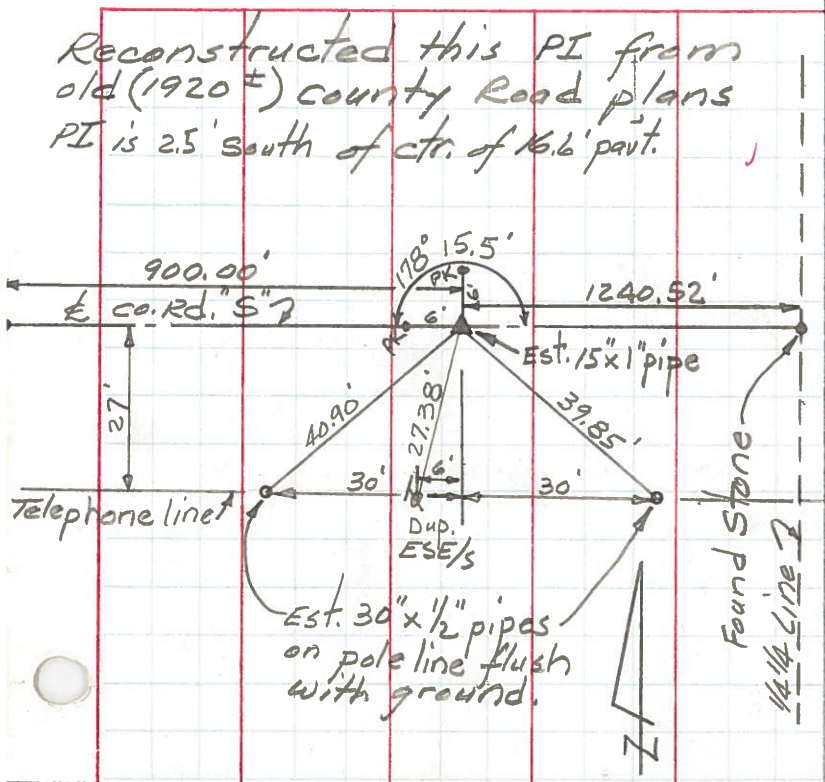
PERSONNEL TITLE PERSONNEL TITLE
 Red Beach _____
 Newcomb _____
 Knape _____
 Wise _____

COUNTY Fulton DATE May 1971

S. R. 64 WEATHER _____

SEC. Amboy Twp. TEMP. _____

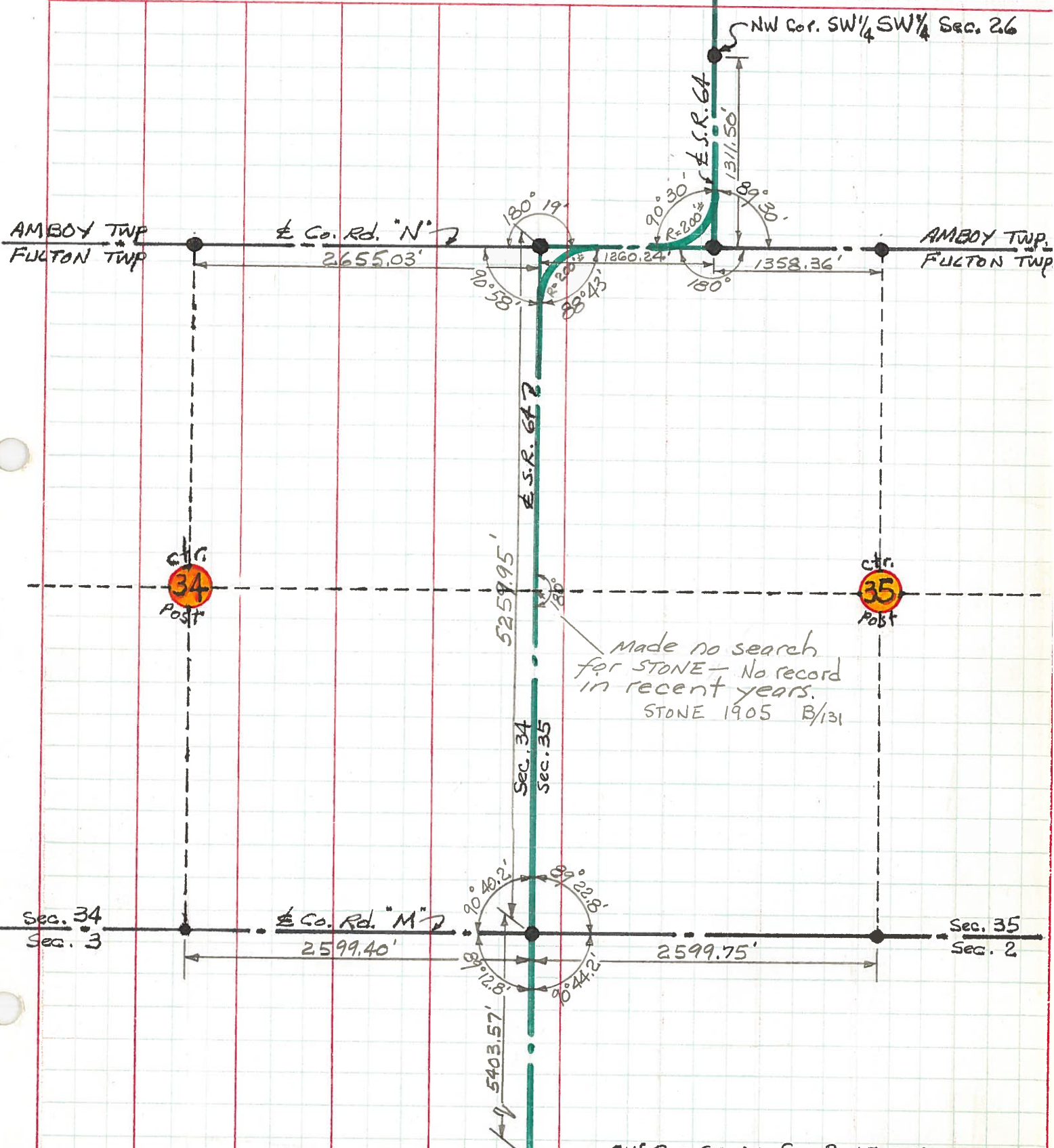
DESCRIPTION CONTROL POINTS JOB NO.



PERSONNEL TITLE PERSONNEL TITLE
 Red Beach
 Newcomb
 Knape
 Wise

COUNTY Fulton DATE 9 Apr '71
 S. R. 64 WEATHER _____
 SEC. Fulton Twp T-9-S TEMP. _____

DESCRIPTION ALIGNMENT & CONTROLS JOB NO. _____



PERSONNEL TITLE PERSONNEL TITLE

Red Beach
Newcomb
Knape
Wise

COUNTY Fulton DATE 26 Mar '71

S. R. 64 WEATHER _____

SEC. Fulton Twp TEMP. _____

DESCRIPTION CONTROL POINTS JOB NO.

LEFT CENTER LINE RIGHT

