

O.D.O.T. DISTRICT 2 SURVEY OFFICE (USE ONLY)

PERSONNEL

REFERENCE NO. 16

SHEET 44 OF 59

NOTES RHOADES DATE 7/14/22

H.C. NIESE WEATHER HAZE

R.C. WHITAKER TEMP. 74°

ROUTE SR 64

COUNTY FULTON

TOWNSHIP FULTON

SECTION 26

DWG BY RHOADES PID PAVETRAIN

T 9 N R 4 E

TYPE MONUMENT MAG/WASHER

ON SURFACE - ~~BELOW~~ ON

OFFSET \varnothing PAVEMENT 2.1' LT : ~~RT~~

7.4' TO LT EDGE PAVEMENT

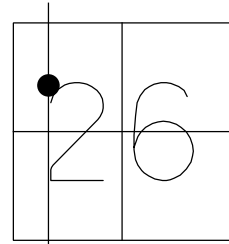
STATION: 386+66.43

HORIZ.DATUM: NAD83 2011

GEOID: NAVD88 2018

GRID: NORTHING: 732324.594

EASTING: 1582680.327



\varnothing SR 64

RECORD:
 SET P.K./WASHER
 8/18/93
 FD P.K./WASHER
 8/20/08
 REF16
 9/16/08, SAH
 FD P.K./WASHER
 5/26/10, SAH
 SET MAG/WASHER
 7/29/10, SAH
 FD MAG/WASHER
 REF16
 8/10/17, JFO
 D.N.F.
 7/14/22, TDN
 SHOT HOLE
 WHERE TIES X-ED
 NEWREF16
 12/29/22, TDN
 FD MAG SHANK
 1" DOWN
 4/12/23, JMR



30.10'

1' UP
 MB POST
 #13713



38.66'

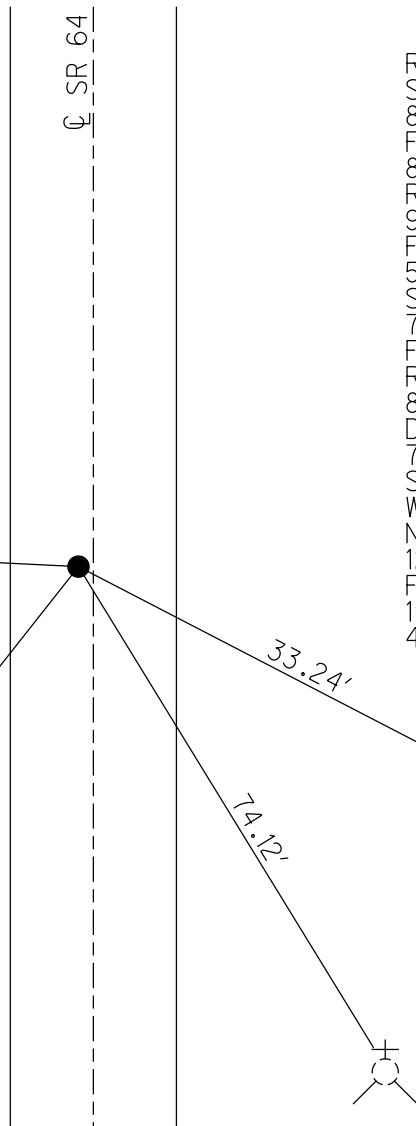
CONC. SIDEWALK

33.24'



74.12'

N. BONNET
 BOLT
 HYDRANT



O.D.O.T. DISTRICT 2 SURVEY OFFICE (USE ONLY)

PERSONNEL

REFERENCE NO. 16

SHEET 44 OF 59

NOTES RHOADES
 H.C. NIESE
 R.C. WHITAKER

DATE 7/14/22
 WEATHER HAZE
 TEMP. 74°

ROUTE SR 64
 COUNTY FULTON
 TOWNSHIP FULTON
 SECTION 26
 T 9 N R 4 E

DWG BY RHOADES PID PAVETRAIN

TYPE MONUMENT MAG/WASHER

ON SURFACE - ~~BELOW~~ ON

OFFSET \varnothing PAVEMENT 2.1' LT : ~~RT~~
7.4' TO LT EDGE PAVEMENT

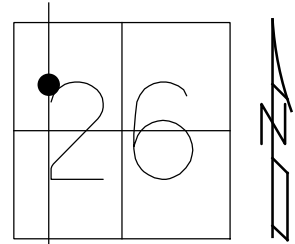
STATION: 386+66.43

HORZ. DATUM: NAD83 2011

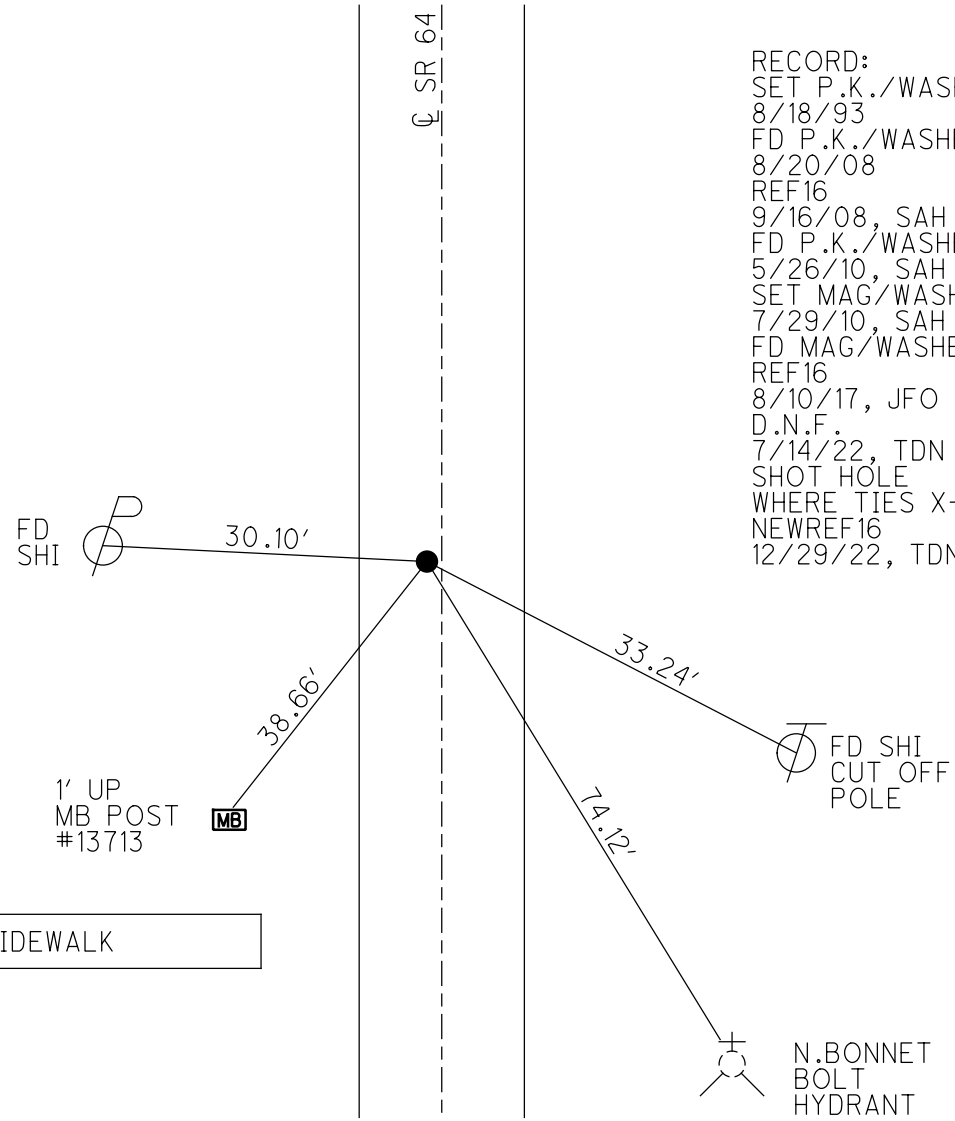
GEOID: NAVD88 2018

GRID: NORTHING: 732324.594

EASTING: 1582680.327



RECORD:
 SET P.K./WASHER
 8/18/93
 FD P.K./WASHER
 8/20/08
 REF16
 9/16/08, SAH
 FD P.K./WASHER
 5/26/10, SAH
 SET MAG/WASHER
 7/29/10, SAH
 FD MAG/WASHER
 REF16
 8/10/17, JFO
 D.N.F.
 7/14/22, TDN
 SHOT HOLE
 WHERE TIES X-ED
 NEWREF16
 12/29/22, TDN



CONC. SIDEWALK

O.D.O.T. DISTRICT 2 SURVEY OFFICE (USE ONLY)

PERSONNEL

REFERENCE NO. 16

SHEET 44 OF 59

NOTES RHOADES

DATE 8/10/17

ROUTE SR 64

H.C. O'DONNELL

WEATHER SUNNY

COUNTY FULTON

R.C. RHOADES

TEMP. 71°

TOWNSHIP AMBOY

SECTION 26

DWG BY NIESE PID 101213

T 9 S R 4 E

TYPE MONUMENT MAG/WASHER

ON SURFACE - ~~BELOW~~ ON

OFFSET 2.1' LT : ~~RT~~

7.4' TO LT EDGE PAVEMENT

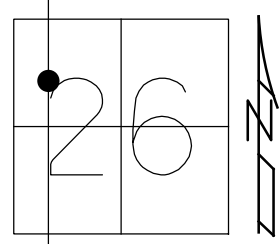
STATION: 386+66.43

HORIZ.DATUM: NAD83(2011)

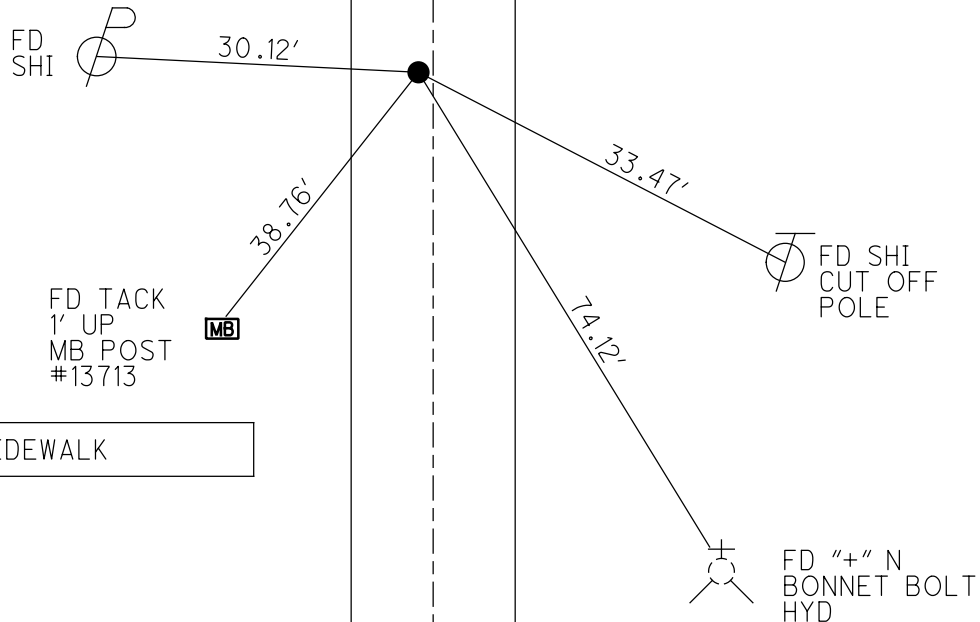
GEOID: NAVD88 2012A

GRID: NORTHING: 732324.591

EASTING: 1582680.415



RECORD:
 SET P.K./WASHER
 8/18/93
 FD P.K./WASHER
 8/20/08
 REF16
 9/16/08, SAH
 FD P.K./WASHER
 5/26/10, SAH
 SET MAG/WASHER
 7/29/10, SAH
 FD MAG/WASHER
 REF16
 8/10/17, JFO



O.D.O.T. DISTRICT 2 SURVEY OFFICE (USE ONLY)

PERSONNEL _____ REFERENCE NO. 16 SHEET 24 OF 39
 NOTES RHOADES DATE 8/10/17 ROUTE SR 64
 H.C. O'DONNELL WEATHER SUNNY COUNTY FULTON
 R.C. RHOADES TEMP. 71° TOWNSHIP AMBOY
 _____ SECTION 26
 _____ T 9 S R 4 E

TYPE MONUMENT _____ MAG/WASHER _____

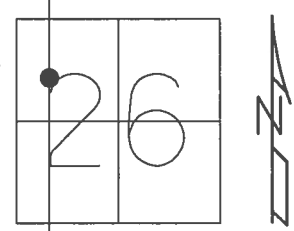
ON SURFACE - ~~BELOW~~ _____ ON _____

LEFT - ☉ PAV'T - ~~RIGHT~~ _____ 2.1'

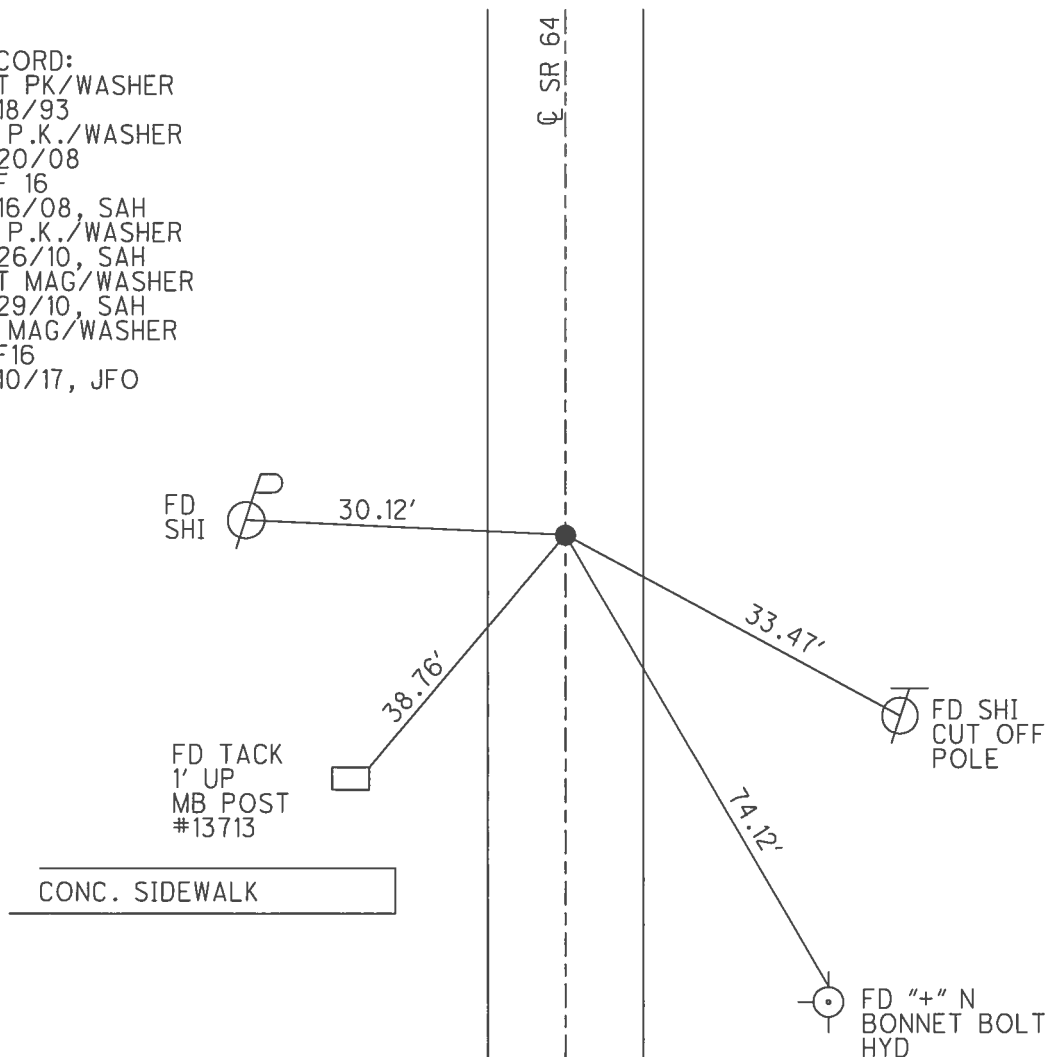
7.4' TO LT EDGE PAVEMENT

S.L.M. _____ 386+66.43

GRID: NOTHING: 732324.591 EASTING: 1582680.415



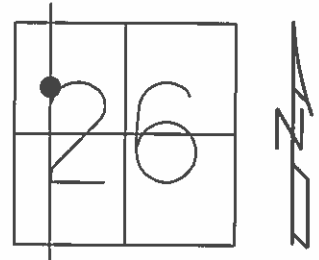
RECORD:
 SET PK/WASHER
 8/18/93
 FD P.K./WASHER
 8/20/08
 REF 16
 9/16/08, SAH
 FD P.K./WASHER
 5/26/10, SAH
 SET MAG/WASHER
 7/29/10, SAH
 FD MAG/WASHER
 REF16
 8/10/17, JFO



O.D.O.T. DISTRICT 2 SURVEY OFFICE (USE ONLY)

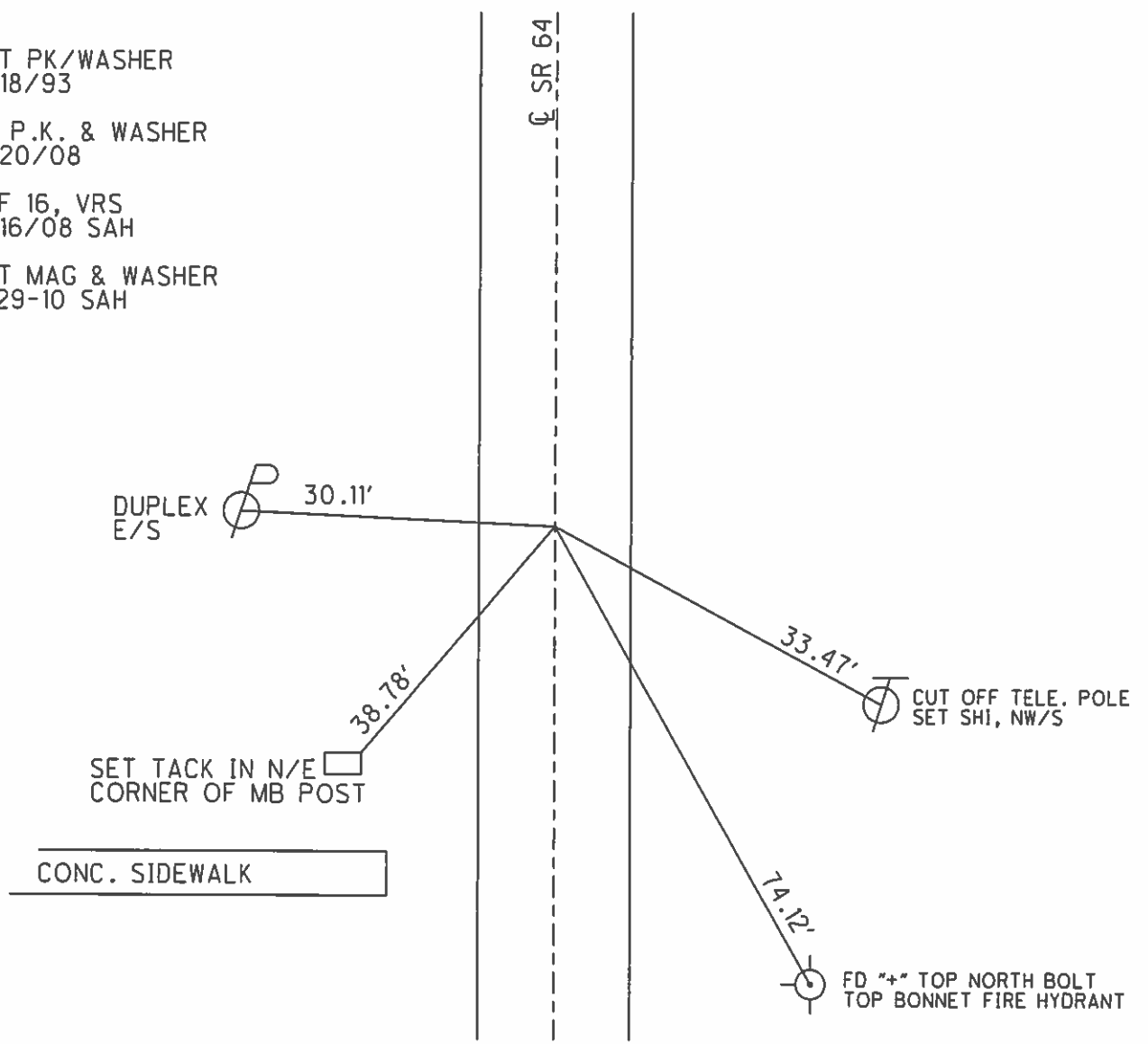
PERSONNEL _____ REFERENCE NO. 16 SHEET 24 OF 39
 NOTES HUSS DATE 5-26-10 ROUTE SR 64
 H.C. FINTEL WEATHER SUNNY COUNTY FULTON
 R.C. CANTERBURY TEMP. 84° TOWNSHIP AMBOY
 _____ SECTION 26
 _____ T 9 S R 4 E

TYPE MONUMENT PK/WASHER
 ON SURFACE - ~~BELOW~~ ON _____
 LEFT - ☉ PAV'T - RIGHT 2.1'
7.4' TO LI EDGE PAVEMENT
 S.L.M. 386+66.43



GRID: NOTHING: 732324.610 EASTING: 1582680.318

SET PK/WASHER
8/18/93
 FD P.K. & WASHER
8/20/08
 REF 16, VRS
9/16/08 SAH
 SET MAG & WASHER
7-29-10 SAH



O.D.O.T. DISTRICT 2 SURVEY OFFICE

PERSONNEL

REFERENCE NO. 16

SHEET 19 OF 20

NOTES J. CURTIS

H.C. CORDS

R.C. CANTERBURY

ROMERO

DATE 7-27-93

WEATHER Sunny

TEMP. +90

SET P.K. & WASHER
8-18-93

ROUTE S.E. 64

COUNTY FULTON

TOWNSHIP AMBOY

SECTION 26

T 9 S 4 R 4 E

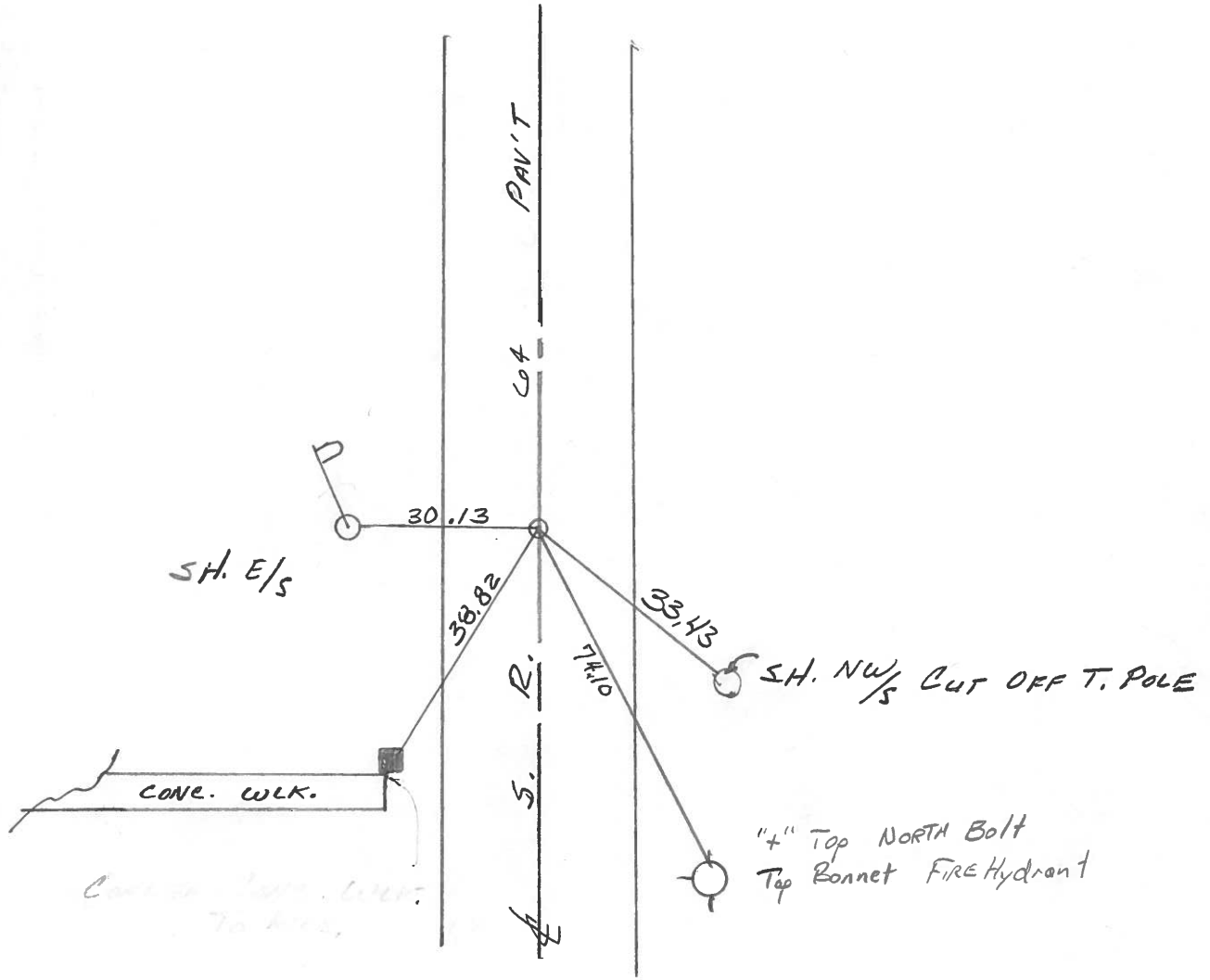
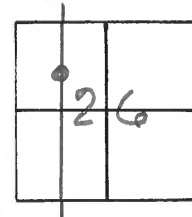
TYPE MONUMENT Sm. R.I.R. Spike

ON SURFACE - BELOW Yes

LEFT - ~~C~~ PAV'T. - RIGHT 2.3'

8.2 TO LT EDGE PAVEMENT

S.L.M. 374+91



Q.D.O.T. DISTRICT 2 SURVEY OFFICE

SHEET 15 OF

County Fulton S.R. 64

Date 20 April 84

Township Amborg

Weather Cloudy

Section 26

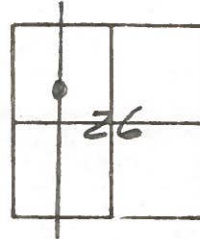
Temp. 42°

T N, R E

Personnel I. Stone

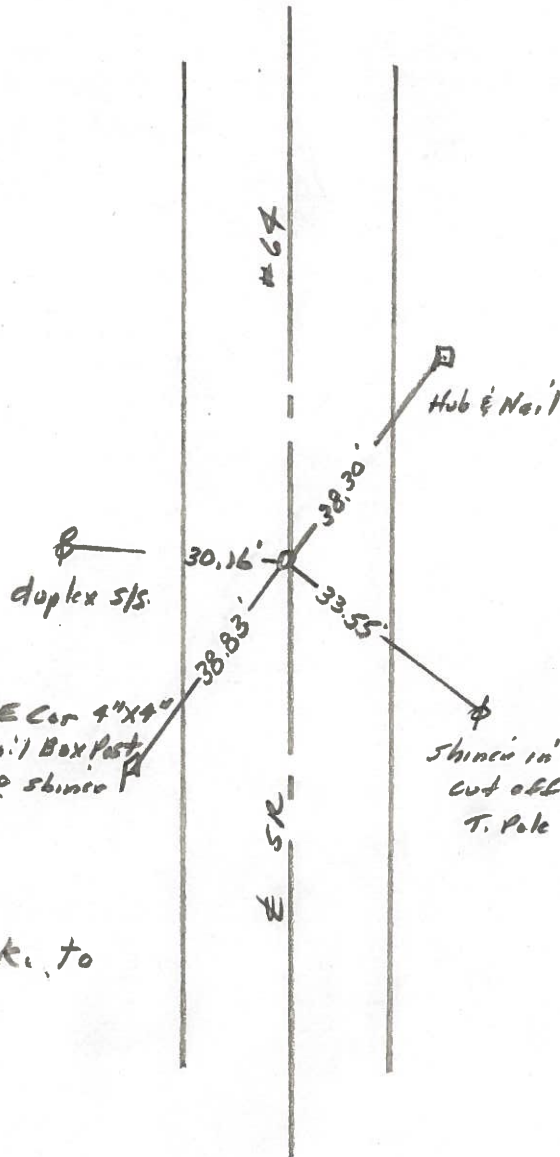
P. Neuser

R. Michelak



3744 40

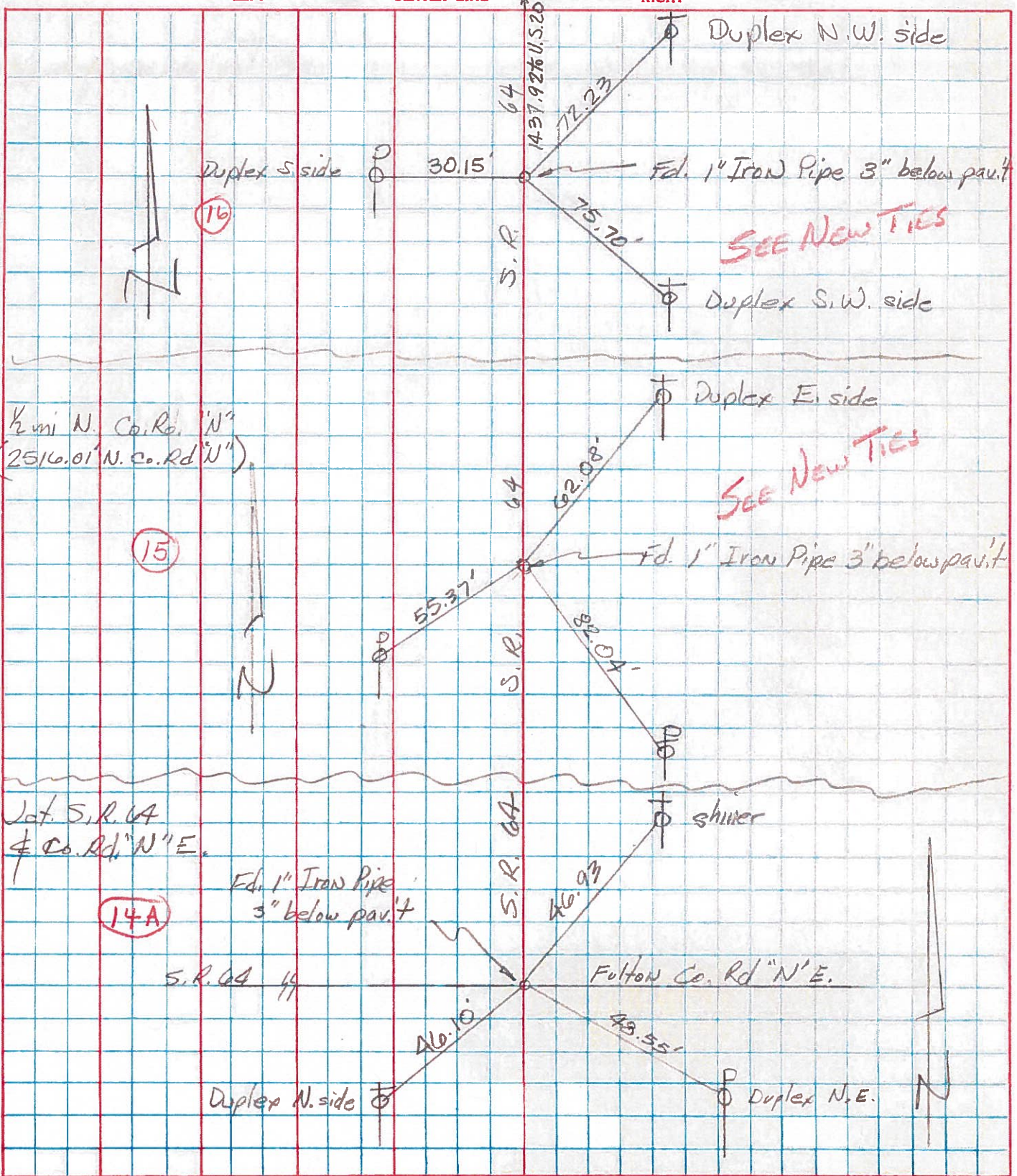
REF. NO. 16



Fd.
10.6' to E. edge put.
7.8' to W. edge put.
Reset Sm. R.R. Spk. to
Surface - 6-18-84

PERSONNEL	TITLE	PERSONNEL	TITLE	COUNTY	DATE	WEATHER	TEMP.
Tomsic		Boyle		Fulton	Aug. 7, 1973		
Neuser				S. R. 64			
Granata				SEC. Amboy Twp			
Vanyo							

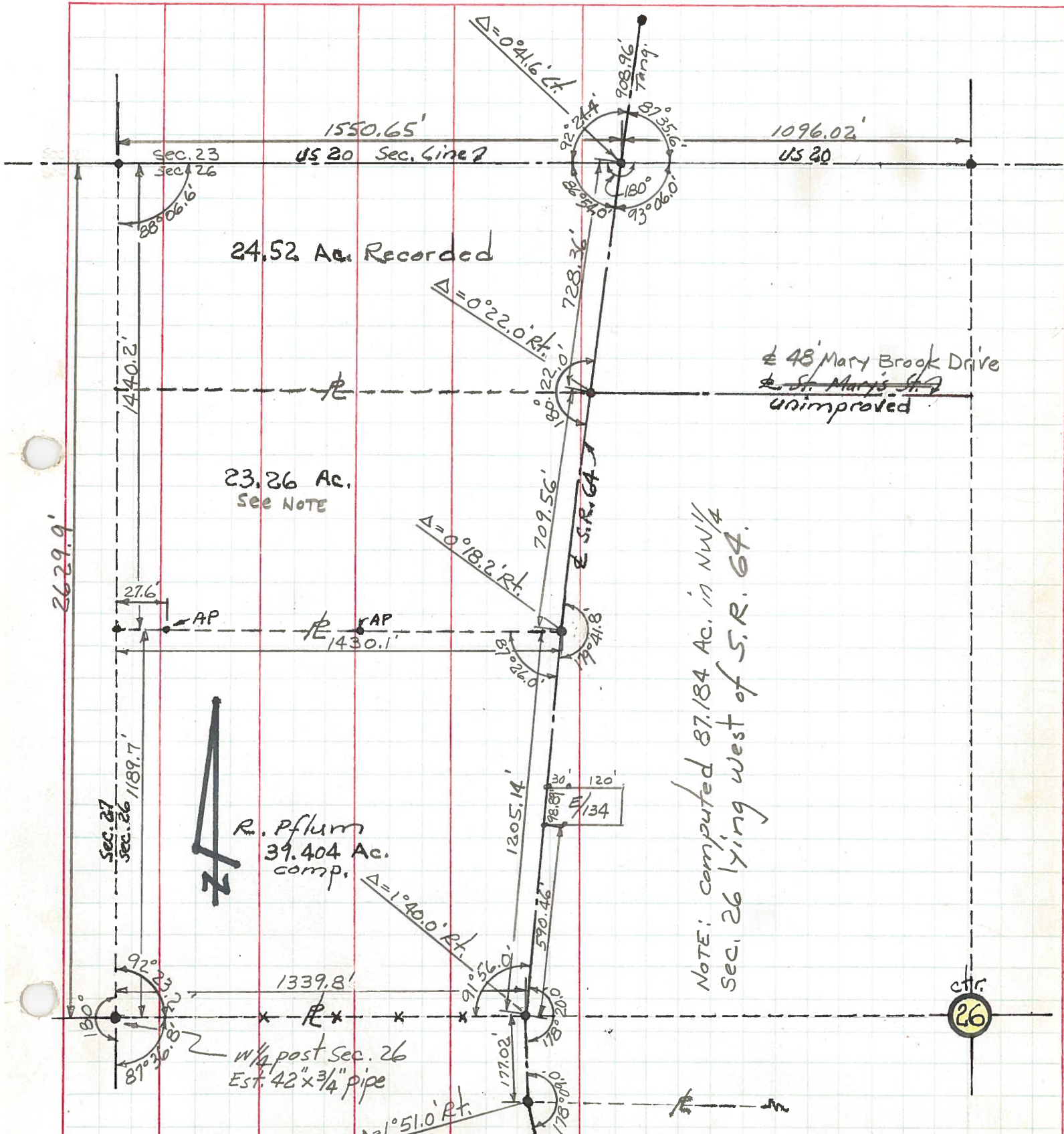
DESCRIPTION _____ LEFT _____ CENTER LINE _____ RIGHT _____ JOB NO. _____



PERSONNEL TITLE PERSONNEL TITLE
 Red Beach
 Newcomb
 Knappe
 Wise

COUNTY Fulton DATE May 1971
 S. R. 64 WEATHER _____
 SEC. NW 1/4 Sec. 26, Amboy Twp.

DESCRIPTION ALIGNMENT & CONTROLS JOB NO. _____



PERSONNEL TITLE PERSONNEL TITLE COUNTY Fulton DATE May 1971
Red Beach _____
Newcomb _____
Knappe _____
Wise _____
 S. R. 64 WEATHER _____
 SEC. Amboy Twp. TEMP. _____
 DESCRIPTION CONTROL Witnesses JOB NO. _____

