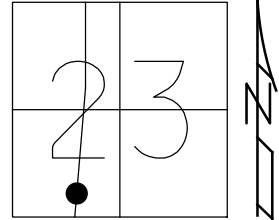


O.D.O.T. DISTRICT 2 SURVEY OFFICE (USE ONLY)

PERSONNEL _____ REFERENCE NO. 17 SHEET 46 OF 59
 NOTES RHOADES DATE 11/3/21 ROUTE SR 64
 H.C. AUBLE WEATHER SUNNY COUNTY FULTON
 R.C. ABNER TEMP. 34° TOWNSHIP AMBOY
 DWG BY NIESE PID 101213 SECTION 23
 T 9 S R 4 E

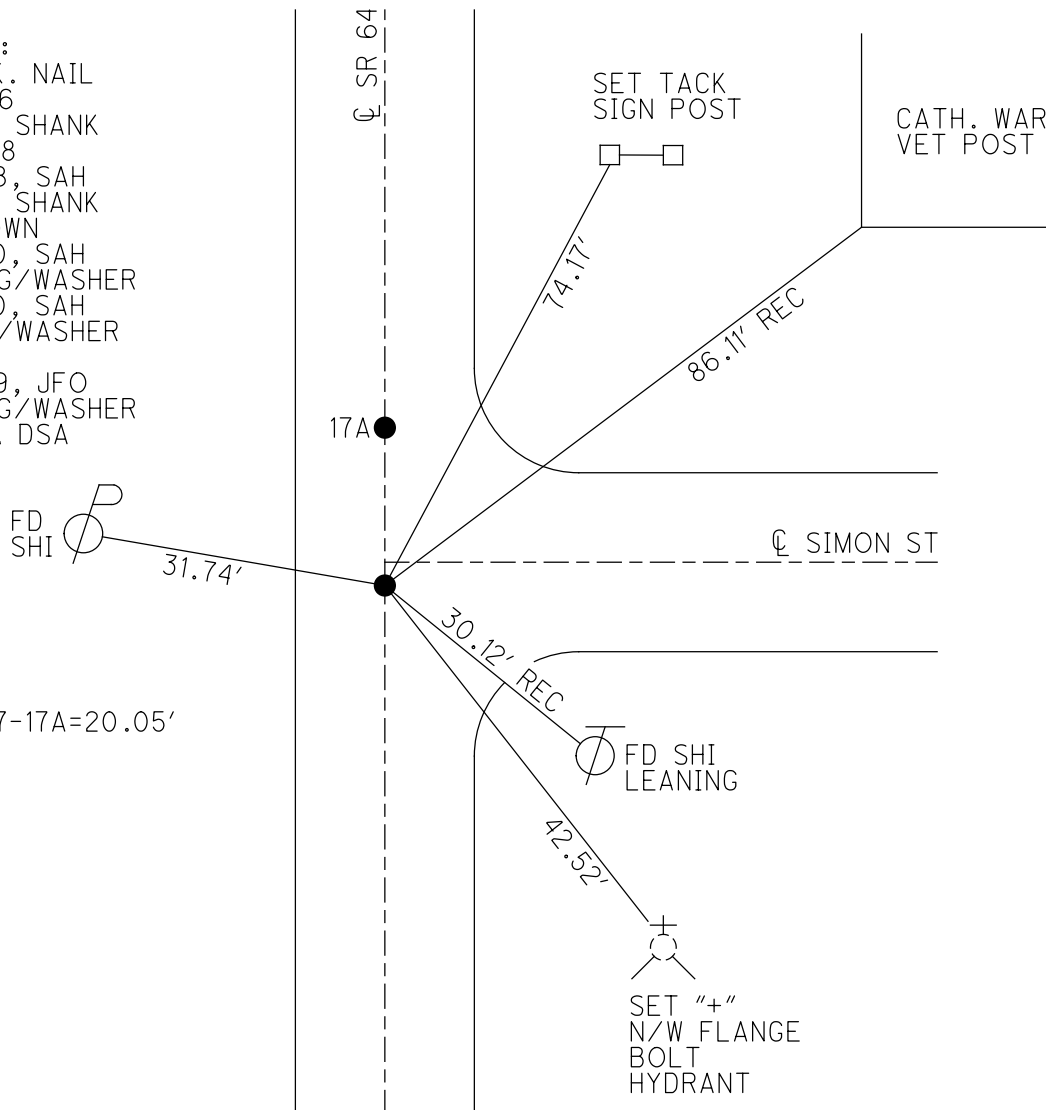
TYPE MONUMENT MAG/WASHER
 ON SURFACE - ~~BELOW~~ ON
 OFFSET ☐ PAVEMENT ON LT : RT
10.5' TO LT EDGE PAVEMENT 2.5' S ☐ SIMON ST
 STATION: 406+70.86



HORIZ.DATUM: NAD83(2011) GEOID: NAVD88 2012A
 GRID: NORTHING: 734324.807 EASTING: 1582810.362

RECORD:
 SET P.K. NAIL
 6/26/86
 FD P.K. SHANK
 8/20/08
 9/16/08, SAH
 FD P.K. SHANK
 0.5' DOWN
 5/26/10, SAH
 SET MAG/WASHER
 7/29/10, SAH
 FD MAG/WASHER
 REF17
 10/17/19, JFO
 SET MAG/WASHER
 11/3/21, DSA

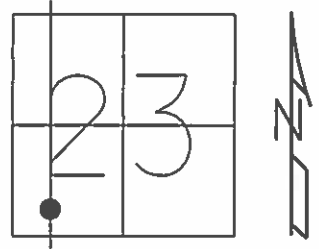
DIST. 17-17A=20.05'



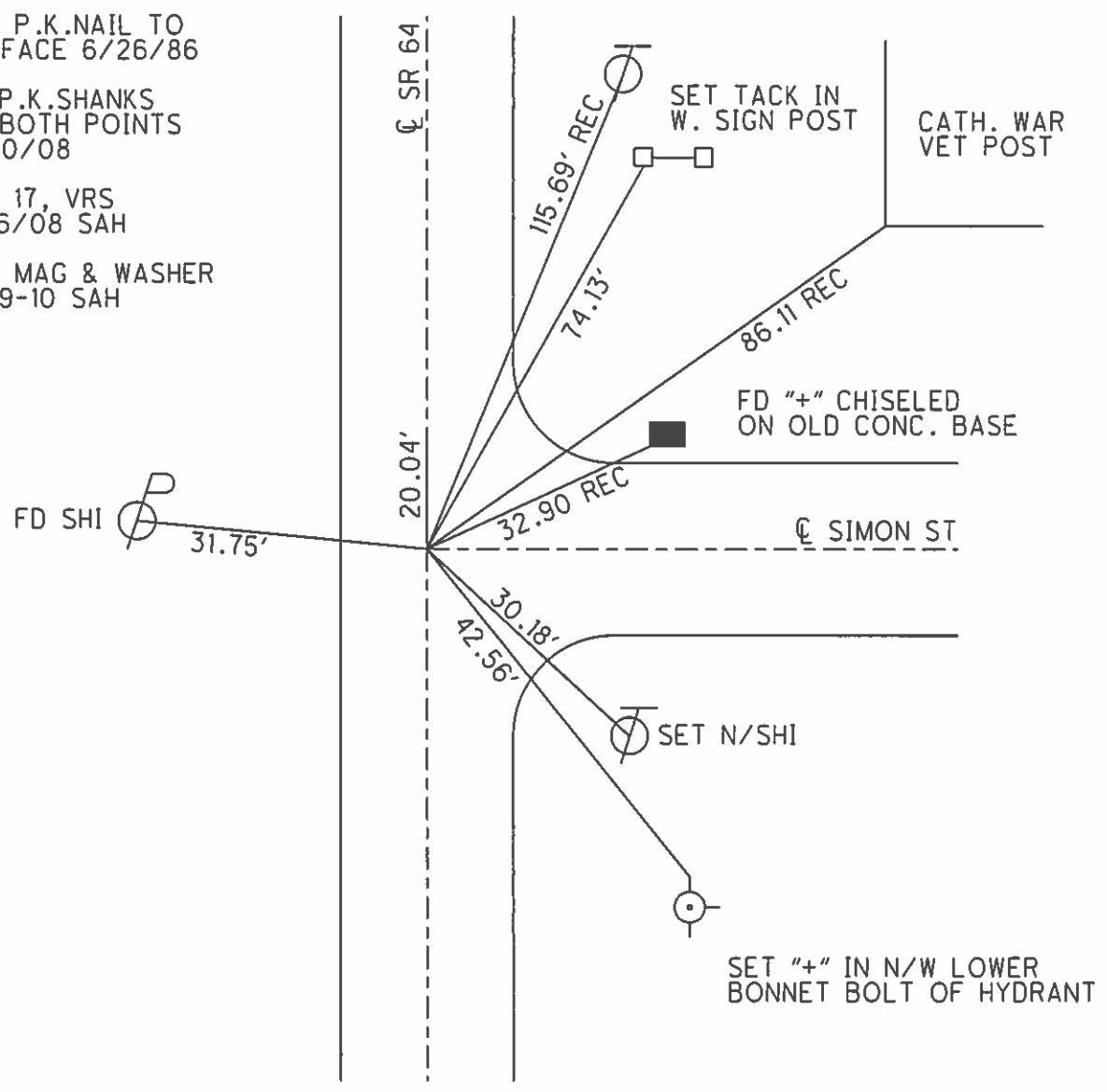
O.D.O.T. DISTRICT 2 SURVEY OFFICE (USE ONLY)

PERSONNEL _____ REFERENCE NO. 17 SHEET 26 OF 39
 NOTES HUSS DATE 5-26-10 ROUTE SR 64
 H.C. FINTEL WEATHER SUNNY COUNTY FULTON
 R.C. CANTERBURY TEMP. 84° TOWNSHIP AMBOY
 _____ SECTION 23
 _____ T 9 N R 4 E

TYPE MONUMENT P.K.SHANK
~~ON SURFACE~~ - BELOW 0.5'
~~LEFT~~ - ℄ PAV'T - ~~RIGHT~~ ON 2.5' S/℄ OF SIMON ST.
10.5' TO LT EDGE PAVEMENT
 S.L.M. 406+70.86
 GRID: NOTHING: 734324.821 EASTING: 1582810.273



SET P.K.NAIL TO SURFACE 6/26/86
 FD P.K.SHANKS AT BOTH POINTS 8/20/08
 REF 17, VRS 9/16/08 SAH
 SET MAG & WASHER 7-29-10 SAH



O.D.O.T. DISTRICT 2 SURVEY OFFICE

PERSONNEL _____

REFERENCE NO. 17

SHEET 1 OF _____

NOTES 1. Stone

H.C. D. Curtis

R.C. R. Michalak

DATE 28 April 86

WEATHER Nice

TEMP. 650

ROUTE SR#64

COUNTY Fulton

TOWNSHIP Amboy

SECTION 23

T _____ R _____

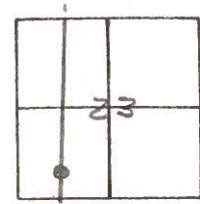
TYPE MONUMENT PK Nail

ON SURFACE - BELOW Surface

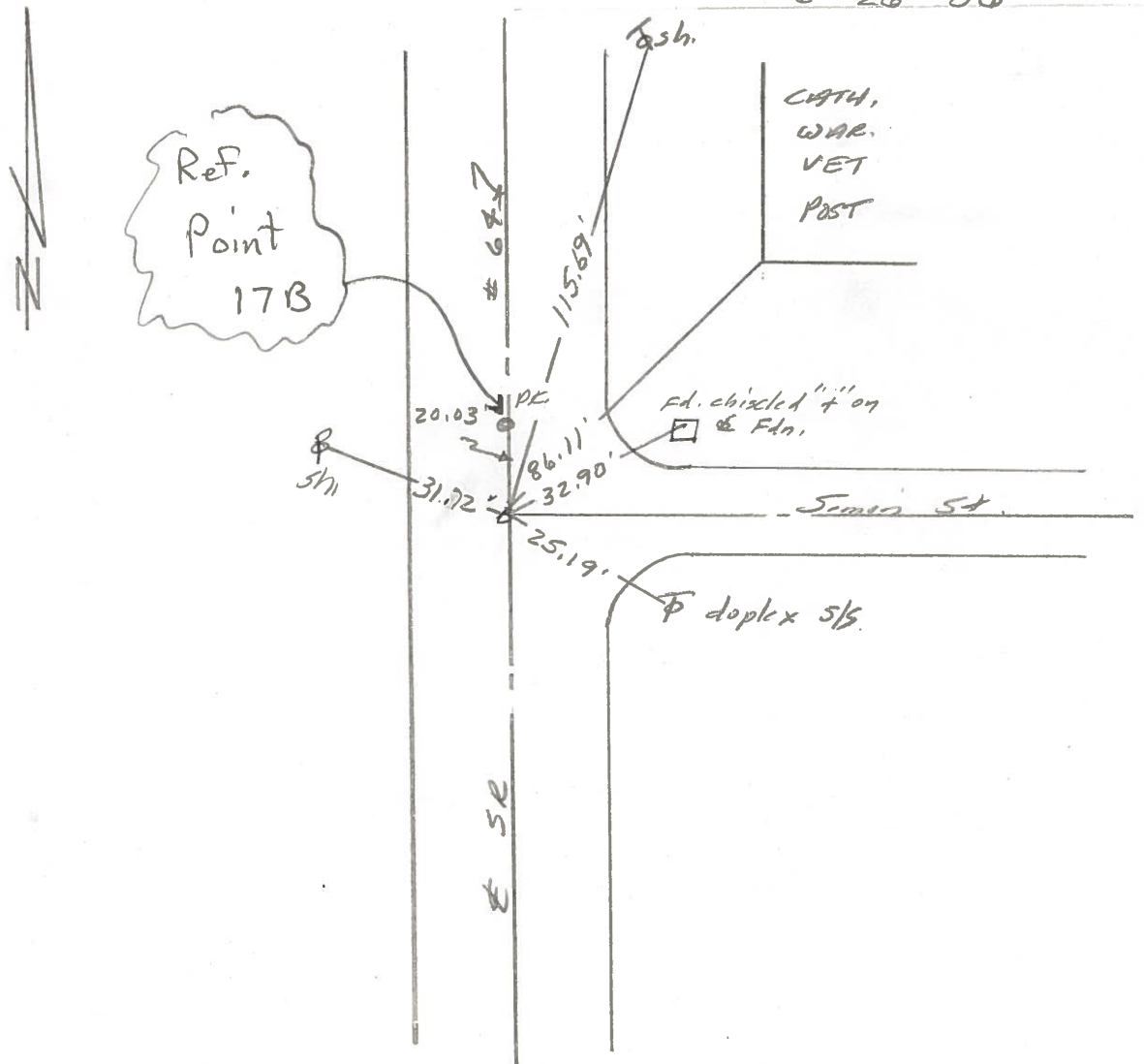
LEFT - & PAV'T. - RIGHT _____

TO _____ EDGE PAVEMENT

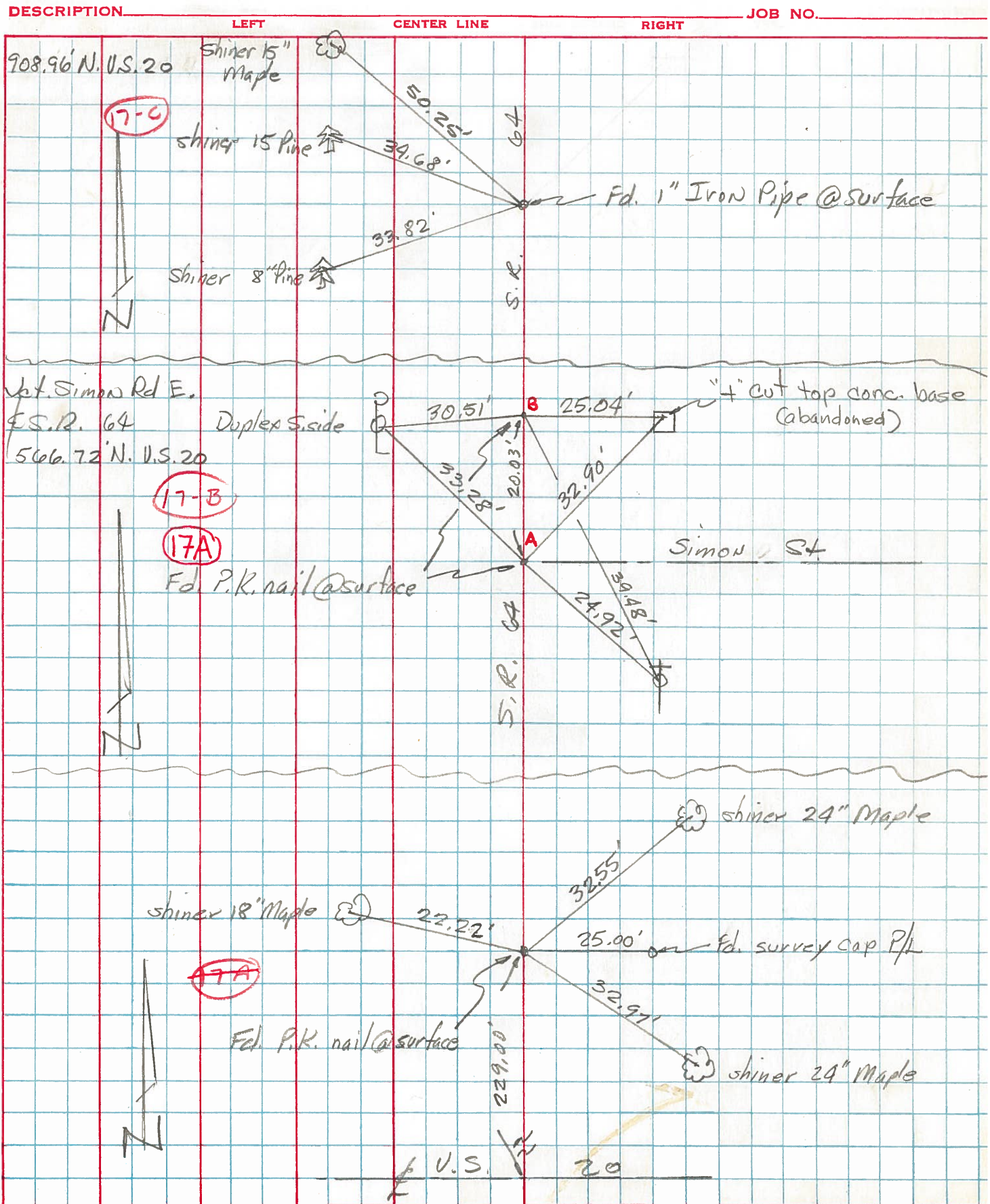
S.L.M. 395+26



Set P.K. Nail To Surface -
6-26-86



PERSONNEL	TITLE	PERSONNEL	TITLE	COUNTY	DATE
Tamsic		Boyle		Fulton	Aug. 7, 1972
Neuser				S. R.	64
Granata				WEATHER	
Vauyo				SEC.	Amboy Twp
DESCRIPTION				TEMP.	

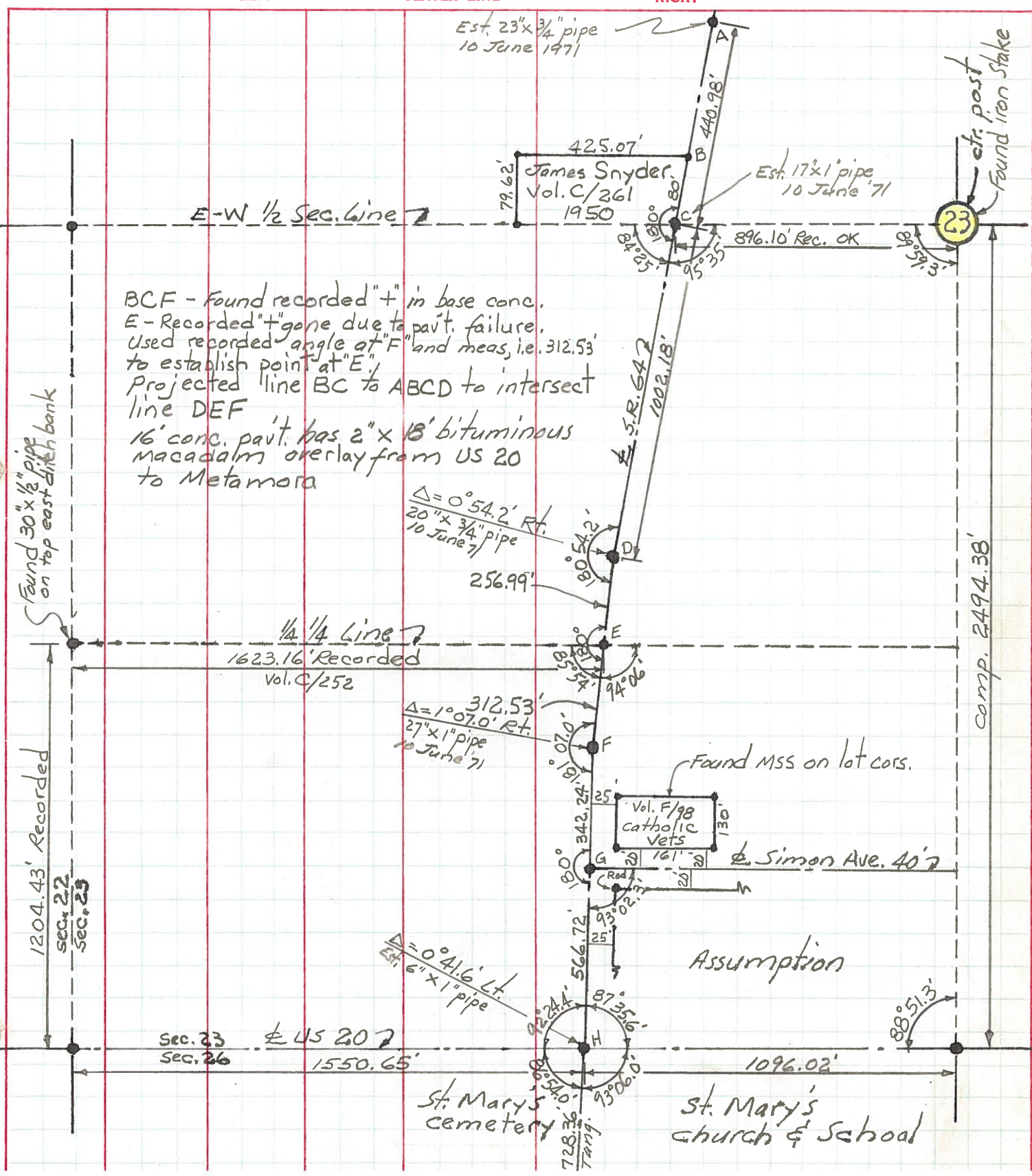


PERSONNEL TITLE PERSONNEL TITLE COUNTY Fulton DATE May '71
Red Beach _____
Newcomb _____
Knape _____
Wise _____

S. R. 64 WEATHER _____

SEC. SW 1/4 Sec. 23, Amboy TEMP. _____

DESCRIPTION ALIGNMENT & CONTROLS JOB NO. _____



BCF - Found recorded "+" in base conc.
 E - Recorded "+" gone due to pavt. failure.
 Used recorded angle at "F" and meas. i.e. 312.53'
 to establish point at "E".
 Projected line BC to ABCD to intersect
 line DEF
 16' conc. pavt. has 2" x 18' bituminous
 macadam overlay from US 20
 to Metamora

Found 30" x 1/2" pipe on top east ditch bank

circ. post Found iron stake

Comp. 2494.38'

Assumption

St. Mary's cemetery

St. Mary's church & School

