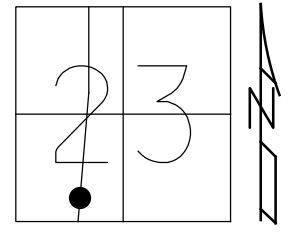


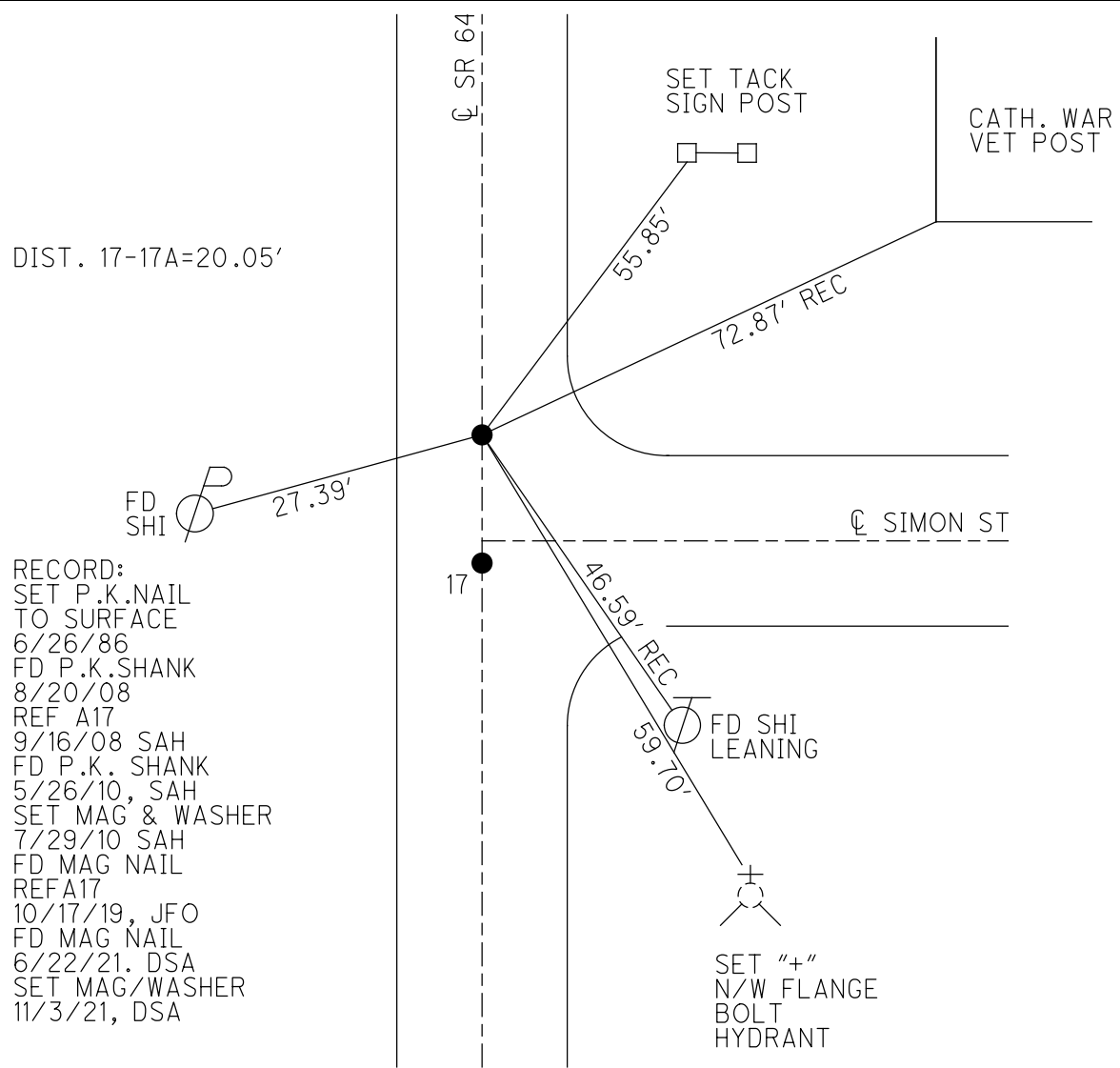
O.D.O.T. DISTRICT 2 SURVEY OFFICE (USE ONLY)

PERSONNEL _____ REFERENCE NO. 17 A SHEET 47 OF 59
 NOTES RHOADES DATE 11/3/21 ROUTE SR 64
 H.C. AUBLE WEATHER SUNNY COUNTY FULTON
 R.C. ABNER TEMP. 34° TOWNSHIP AMBOY
 DWG BY NIESE PID 101213 SECTION 23
 T 9 S R 4 E

TYPE MONUMENT MAG/WASHER
 ON SURFACE - ~~BELOW~~ ON
 OFFSET ☉ PAVEMENT ON LT : RT
10.3' TO LT EDGE PAVEMENT
 STATION: 406+90.90



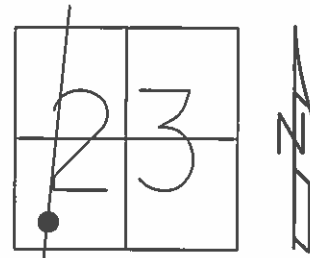
HORZ. DATUM: NAD83(2011) GEOID: NAVD88 2012A
 GRID: NORTHING: 734344.843 EASTING: 1582811.532



O.D.O.T. DISTRICT 2 SURVEY OFFICE (USE ONLY)

PERSONNEL _____ REFERENCE NO. 17 A SHEET 27 OF 39
 NOTES HUSS DATE 5-26-10 ROUTE SR 64
 H.C. FINTEL WEATHER SUNNY COUNTY FULTON
 R.C. CANTERBURY TEMP. 86° TOWNSHIP AMBOY
 SECTION 23
 T 9 N R 4 E

TYPE MONUMENT _____ P.K. SHANK
 ON SURFACE - ~~BELOW~~ _____ ON _____
 LEFT - ☉ PAV'T - RIGHT _____ ON _____
10.3' TO LT EDGE PAVEMENT
 S.L.M. 406+90.90



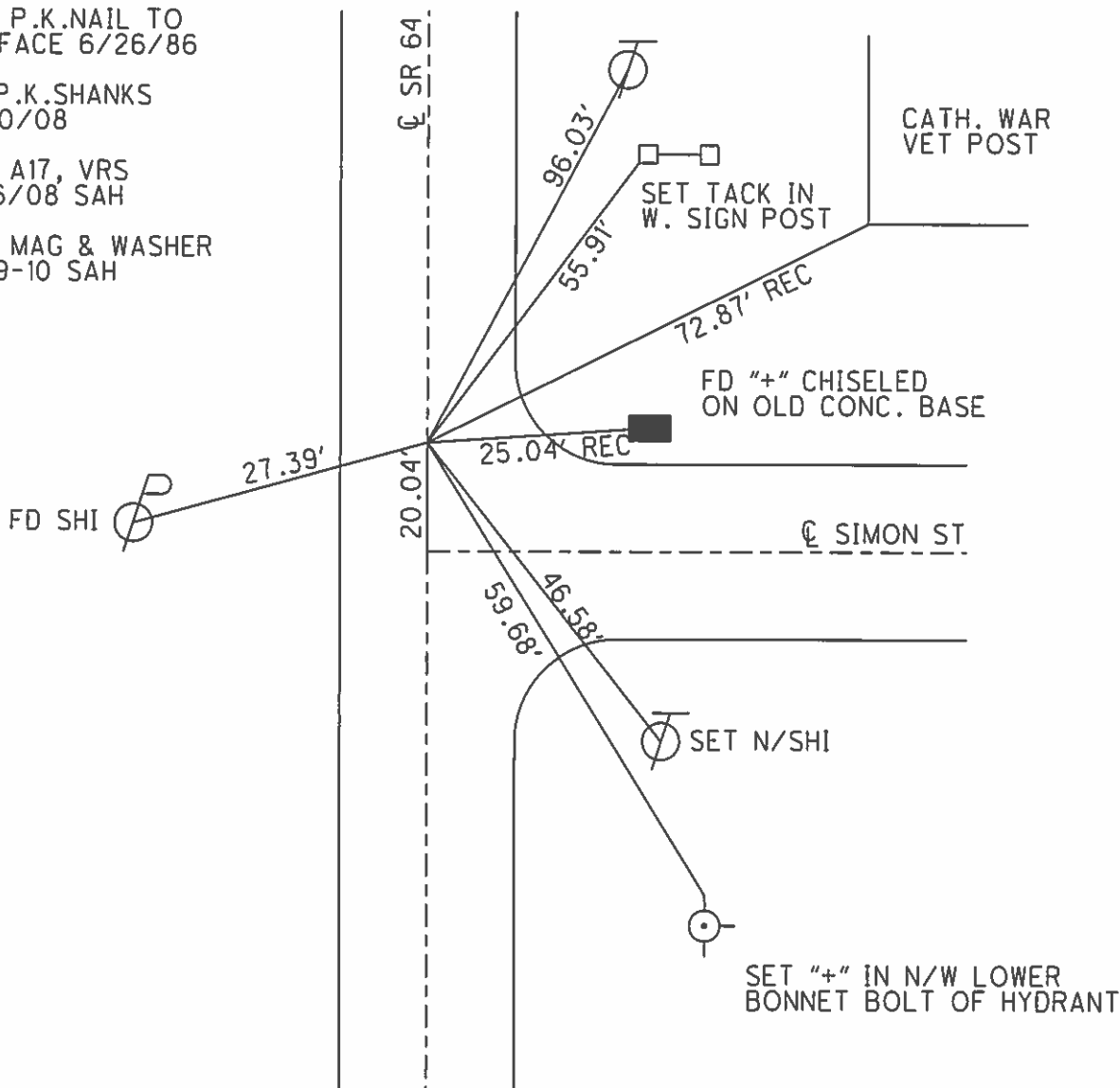
GRID: NOTHING: 734344.831 EASTING: 1582811.423

SET P.K.NAIL TO SURFACE 6/26/86

FD P.K.SHANKS 8/20/08

REF A17, VRS 9/16/08 SAH

SET MAG & WASHER 7-29-10 SAH



O.D.O.T. DISTRICT 2 SURVEY OFFICE

PERSONNEL _____

REFERENCE NO. 17-B

SHEET 2 OF _____

NOTES 1. Stone

H.C. D. Curtis

R.C. R. Michalak

DATE 28 April 86

WEATHER Nice

TEMP. 650

ROUTE SR #64

COUNTY Fulton

TOWNSHIP Amboy

SECTION 23

T _____ R _____

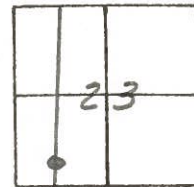
TYPE MONUMENT PK Nail

ON SURFACE - BELOW Surface

LEFT - \odot PAV'T. - RIGHT _____

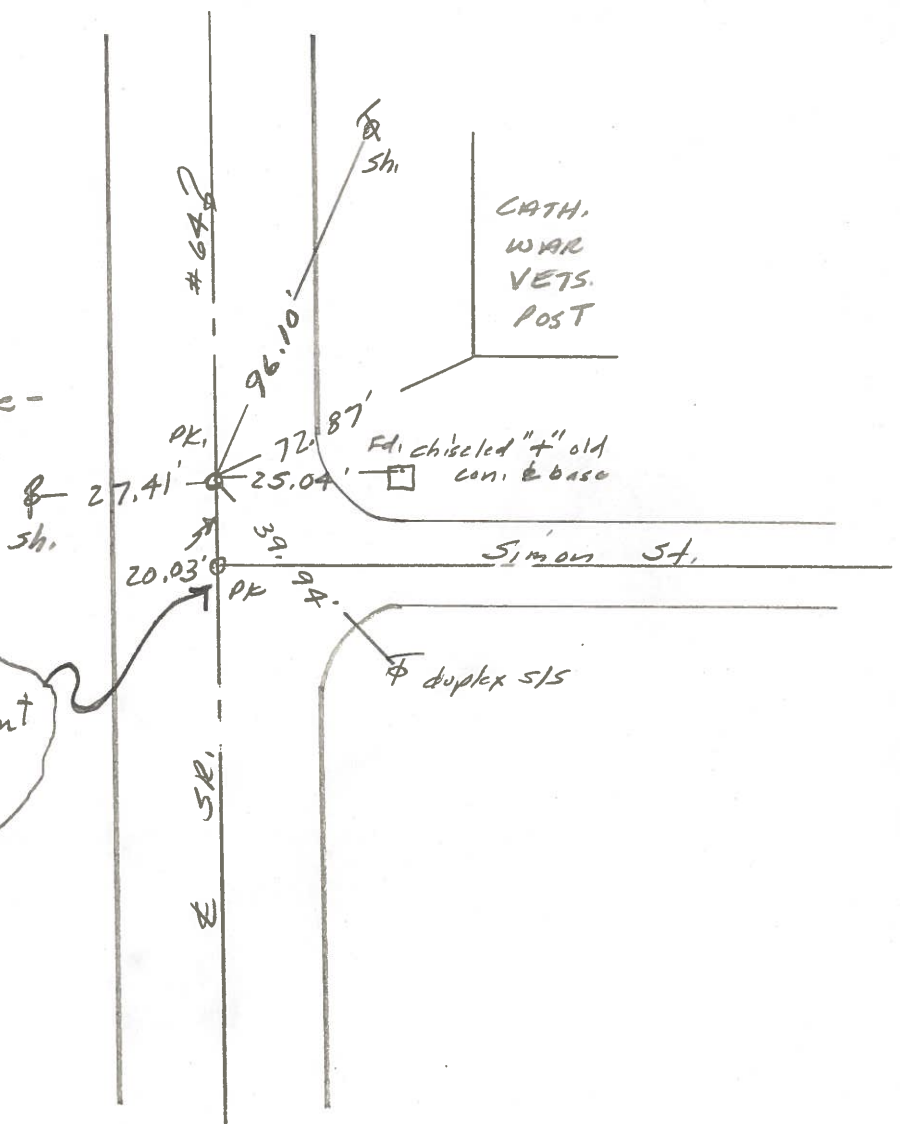
TO _____ EDGE PAVEMENT

S.L.M. 395 + 46



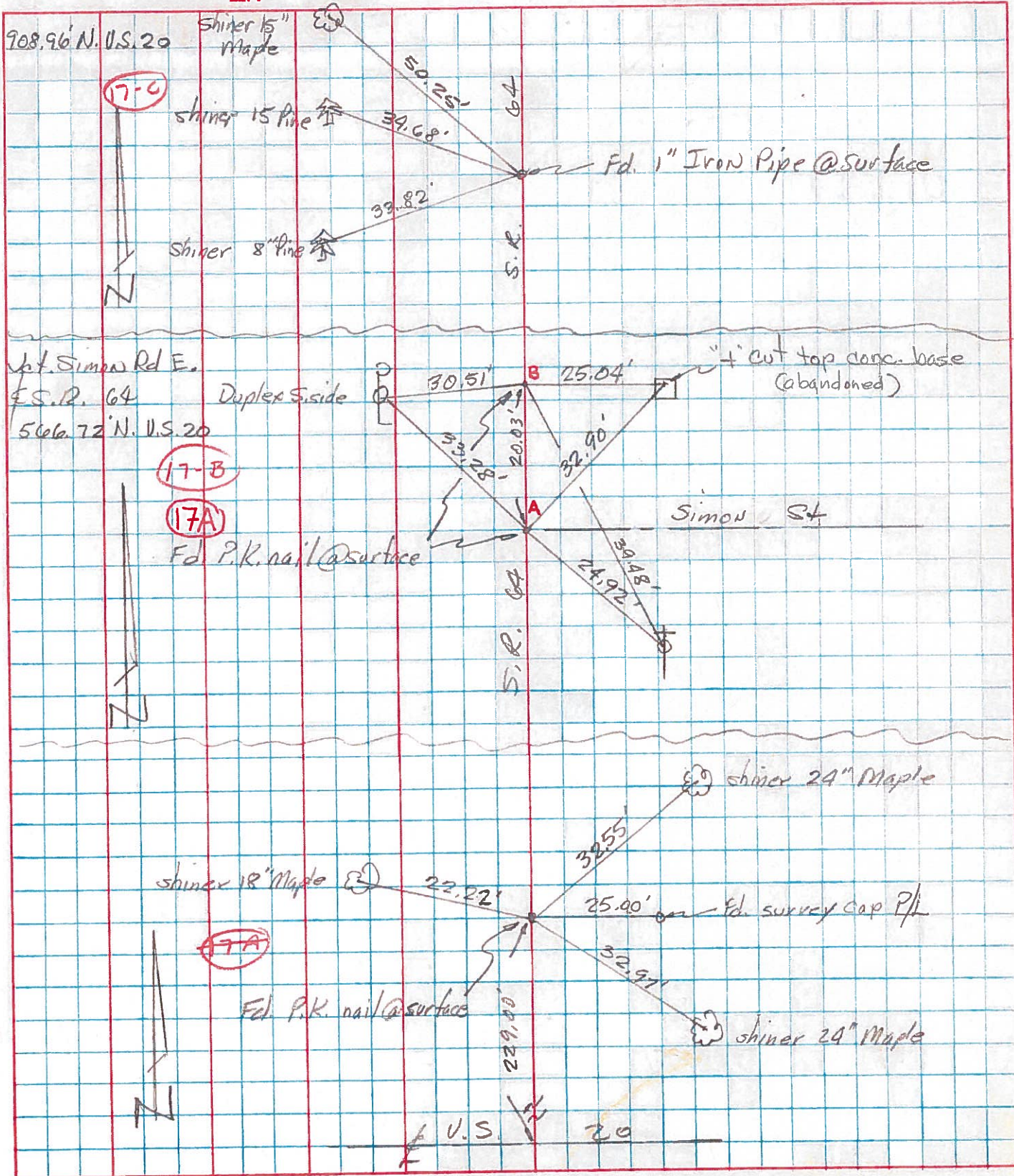
Set P.K. Nail To Surface -
6-26-86

Ref Point
#17



PERSONNEL	TITLE	PERSONNEL	TITLE	COUNTY	DATE	WEATHER	TEMP.
Tamsic		Boyle		Fulton	Aug 7, 1973		
Neuser				S. R. 64			
Granata				SEC. Amboy Twp			
Vandy							

DESCRIPTION LEFT CENTER LINE RIGHT JOB NO.

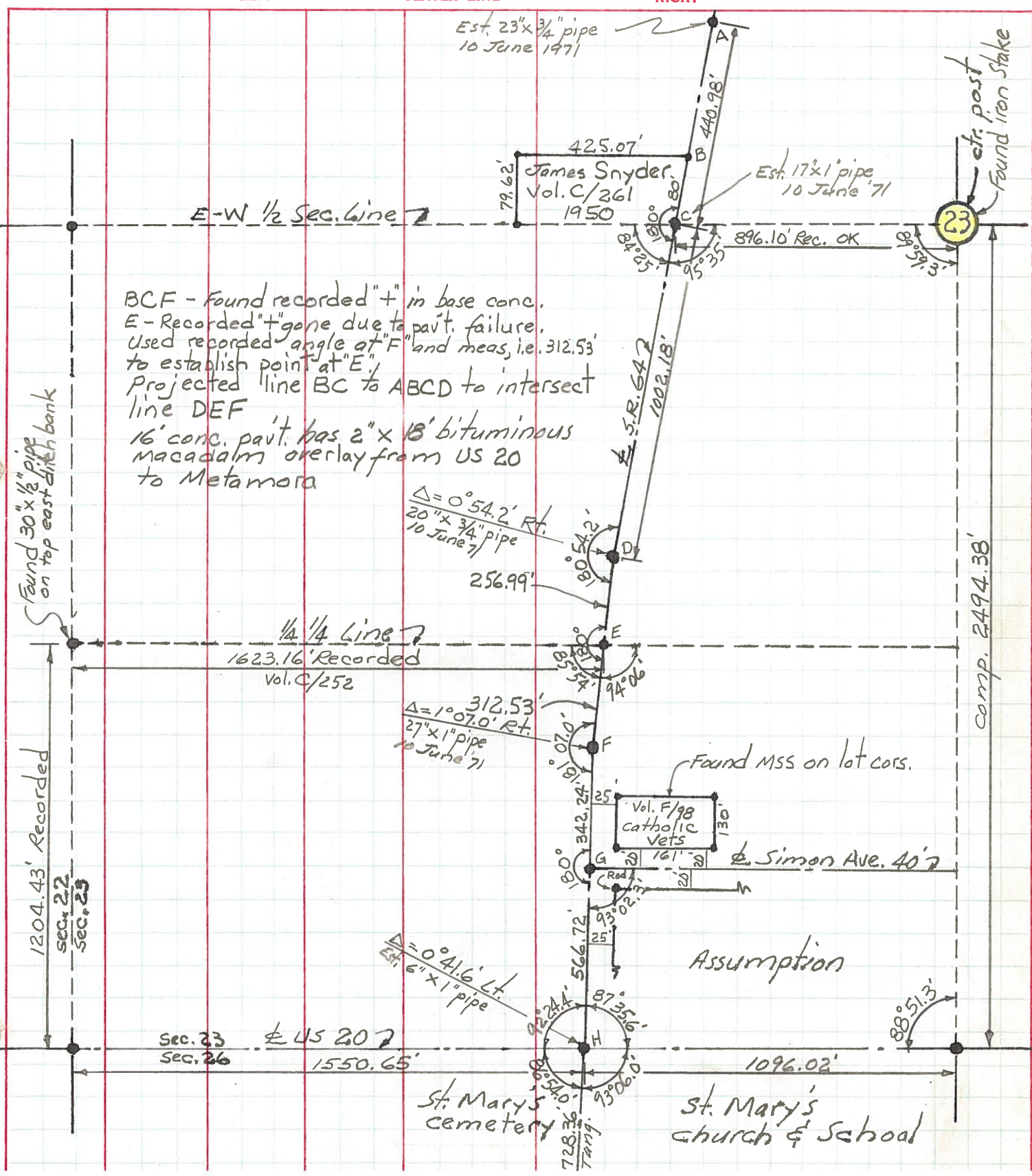


PERSONNEL TITLE PERSONNEL TITLE COUNTY Fulton DATE May '71
Red Beach _____
Newcomb _____
Knape _____
Wise _____

S. R. 64 WEATHER _____

SEC. SW 1/4 Sec. 23, Amboy TEMP. _____

DESCRIPTION ALIGNMENT & CONTROLS JOB NO. _____



BCF - Found recorded "+" in base conc.
 E - Recorded "+" gone due to pavt. failure.
 Used recorded angle at "F" and meas. i.e. 312.53'
 to establish point at "E".
 Projected line BC to ABCD to intersect
 line DEF
 16' conc. pavt. has 2" x 18' bituminous
 macadam overlay from US 20
 to Metamora

Found 30" x 1/2" pipe
 on top east ditch bank

1204.43' Recorded
 sec. 22
 sec. 23

1/4 1/4 Line
 1623.16' Recorded
 Vol. C/252

Sec. 23
 Sec. 26
 1550.65'

Comp. 2494.38'