

O.D.O.T. DISTRICT 2 SURVEY OFFICE (USE ONLY)

PERSONNEL

REFERENCE NO. 17 C

SHEET 48 OF 59

NOTES RHOADES

DATE 6/22/21

ROUTE SR 64

H.C. AUBLE

WEATHER SUNNY

COUNTY FULTON

R.C. NIESE

TEMP. 59°

TOWNSHIP AMBOY

SECTION 23

DWG BY NIESE

PID 101213

T 9 S R 4 E

TYPE MONUMENT MAG SHANK

ON SURFACE - ~~BELOW~~ ON

OFFSET 1.2' LT : ~~RT~~

9.1' TO LT EDGE PAVEMENT

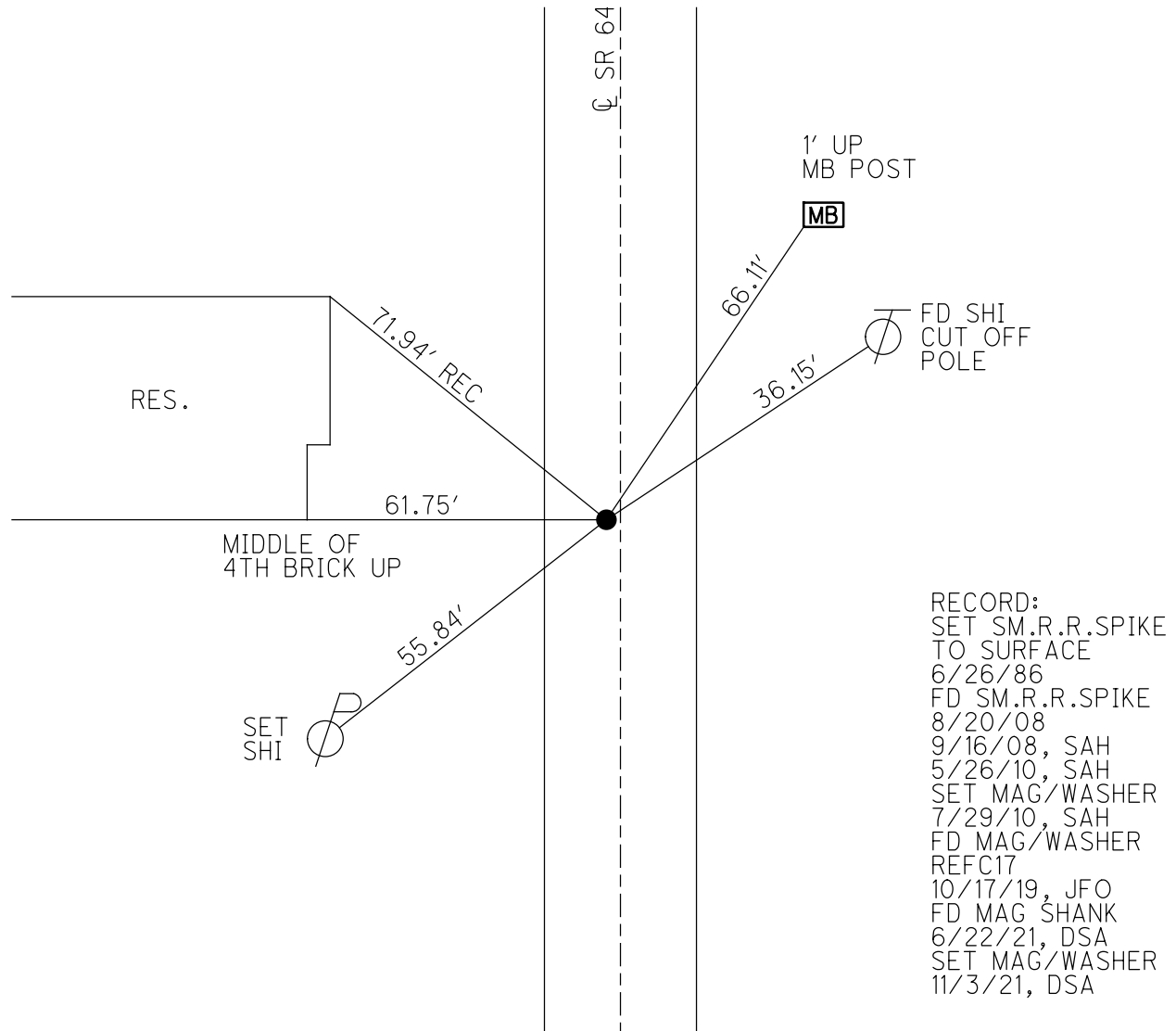
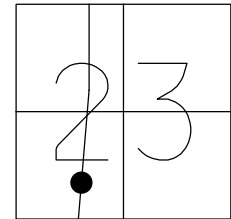
STATION: 410+12.97

HORZ.DATUM: NAD83(2011)

GEOID: NAVD88 2012A

GRID: NORTHING: 734666.311

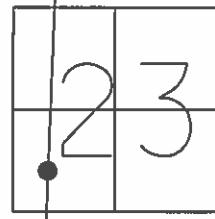
EASTING: 1582830.269



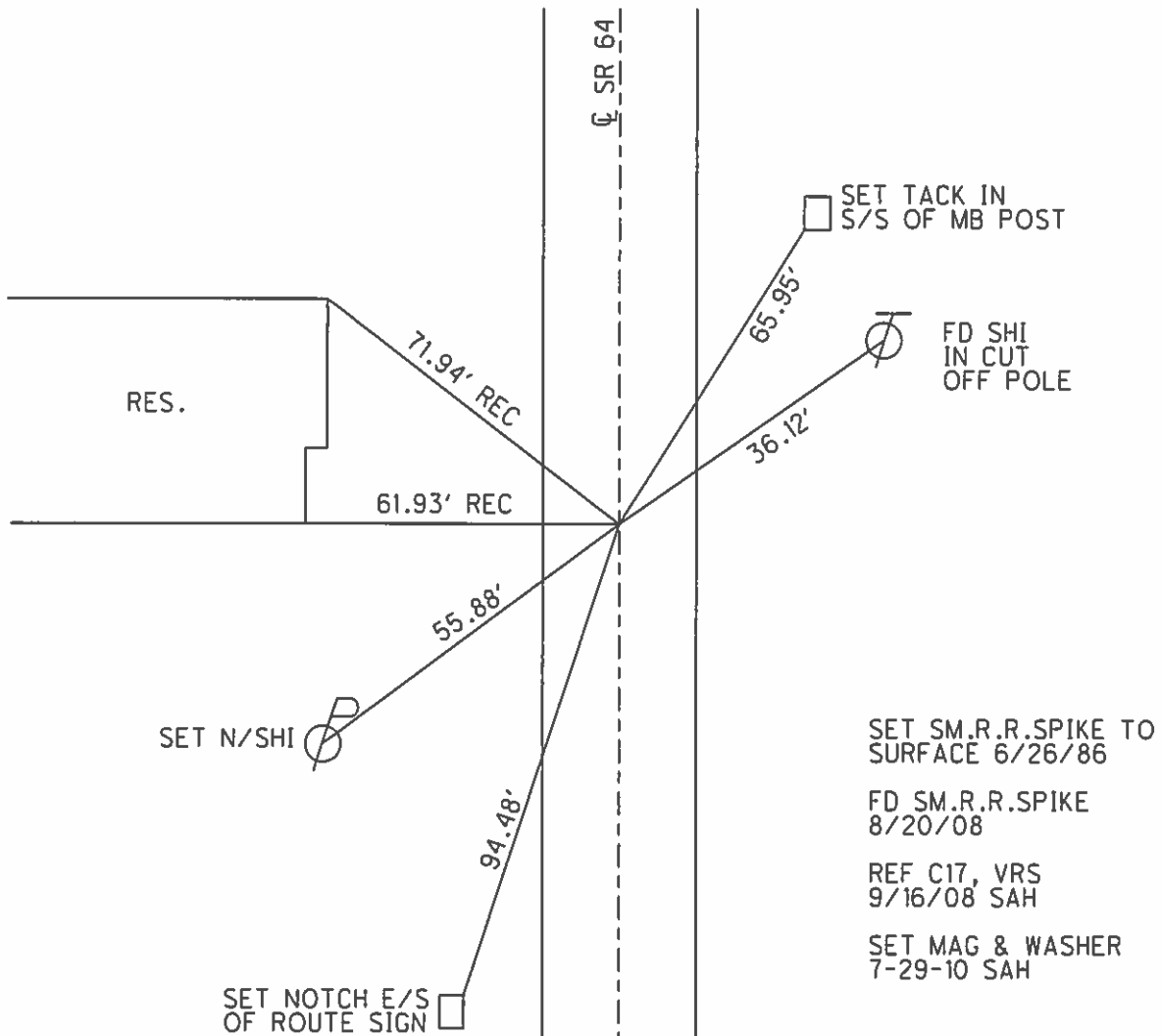
O.D.O.T. DISTRICT 2 SURVEY OFFICE (USE ONLY)

PERSONNEL _____ REFERENCE NO. 17 C SHEET 28 OF 39
 NOTES HUSS DATE 5-26-10 ROUTE SR 64
 H.C. FINTEL WEATHER SUNNY COUNTY FULTON
 R.C. CANTERBURY TEMP. 84° TOWNSHIP AMBOY
 _____ SECTION 23
 _____ T 9 N R 4 E

TYPE MONUMENT SM. R.R. SPIKE
 ON SURFACE - ~~BELOW~~ ON
 LEFT - ☉ PAV'T - ~~RIGHT~~ 1.2'
9.1' TO LT. EDGE PAVEMENT
 S.L.M. 410+12.99



GRID: NOTHING: 734666.371 EASTING: 1582830.128



O.D.O.T. DISTRICT 2 SURVEY OFFICE

PERSONNEL

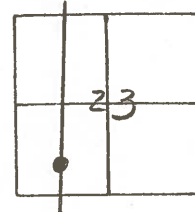
REFERENCE NO. 17-C SHEET 3 OF

NOTES 1. Stone
 H.C. D. Curtis
 R.C. R. Michalek

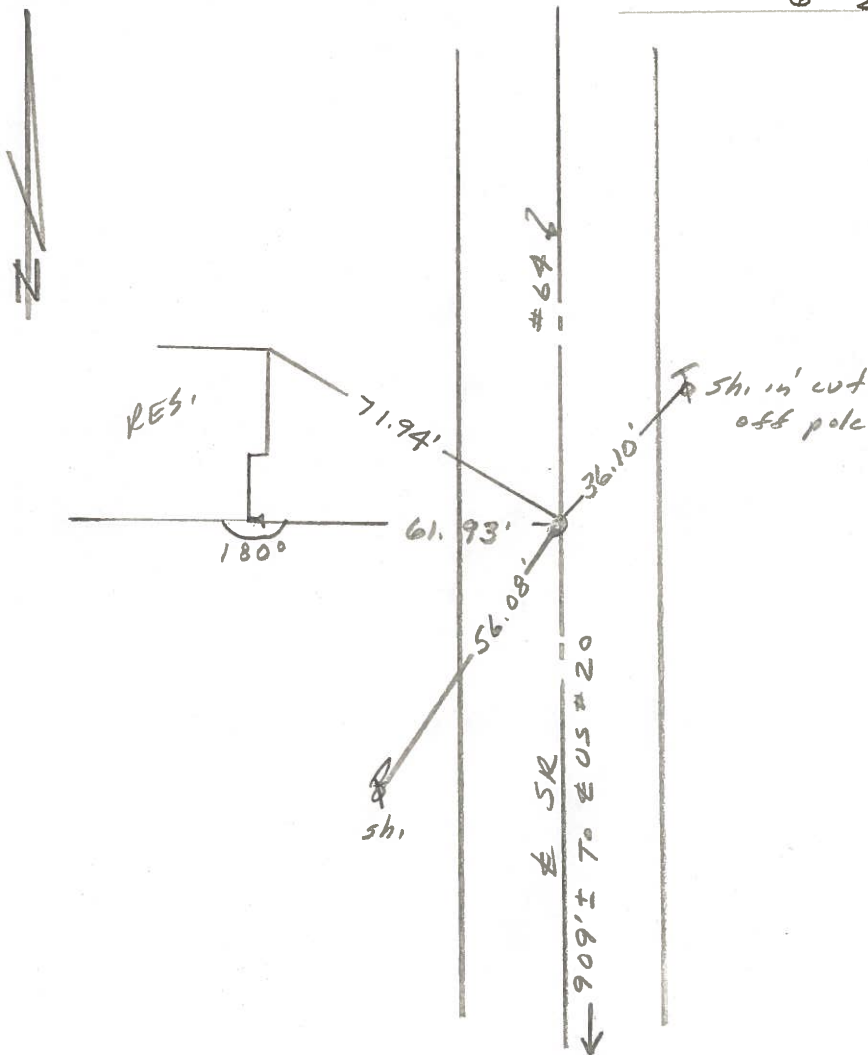
DATE 28 April 86
 WEATHER Nice
 TEMP. 66°

ROUTE SR#64
 COUNTY Fulton
 TOWNSHIP Amboy
 SECTION 23
 T R

TYPE MONUMENT 1" I. pipe
 ON SURFACE - BELOW 1" deep
 LEFT - PAW'T. - RIGHT
 TO EDGE PAVEMENT
 S.L.M. 398 +68

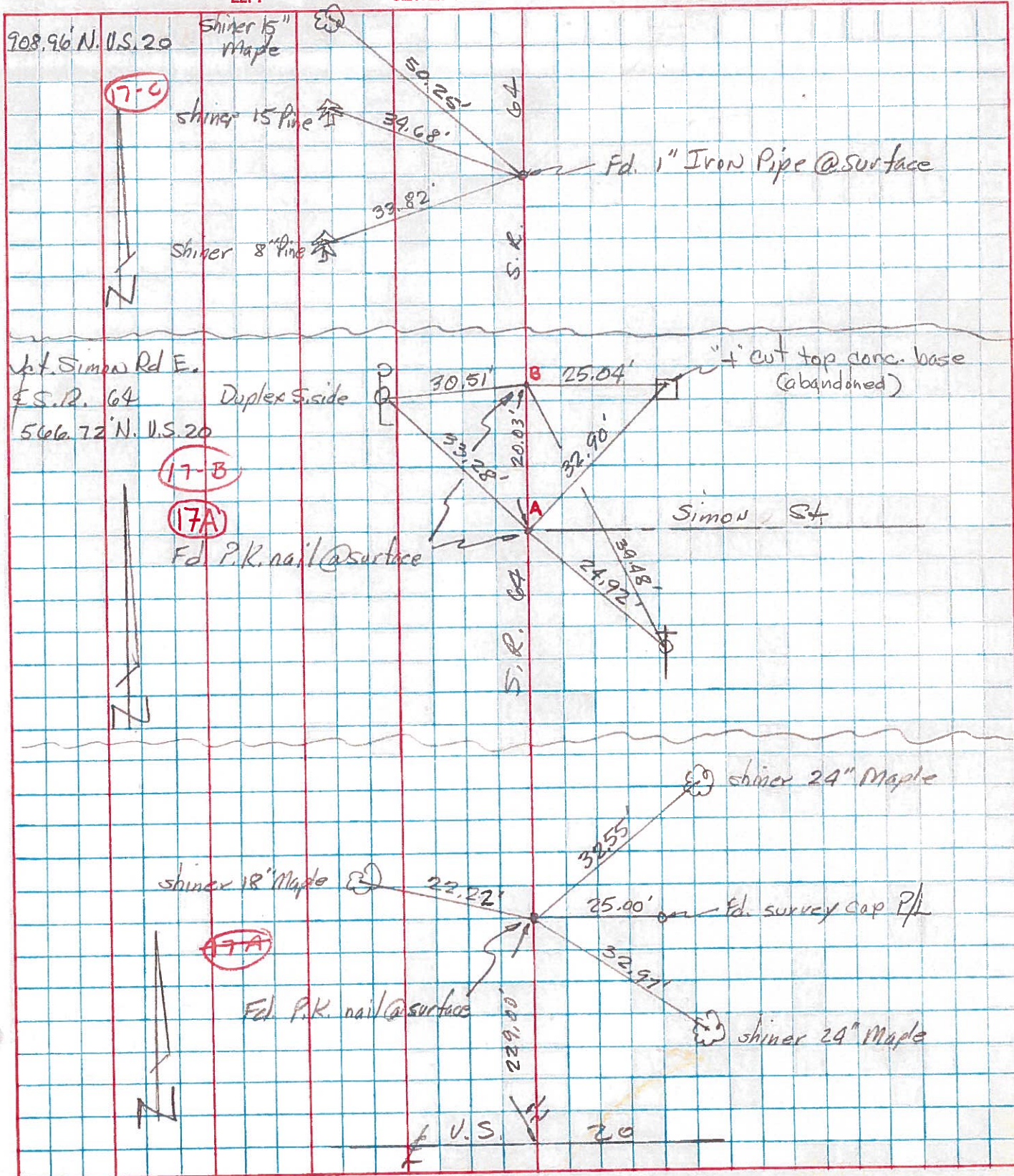


Set Sm. R.R. Spk. To Surface
6-26-86

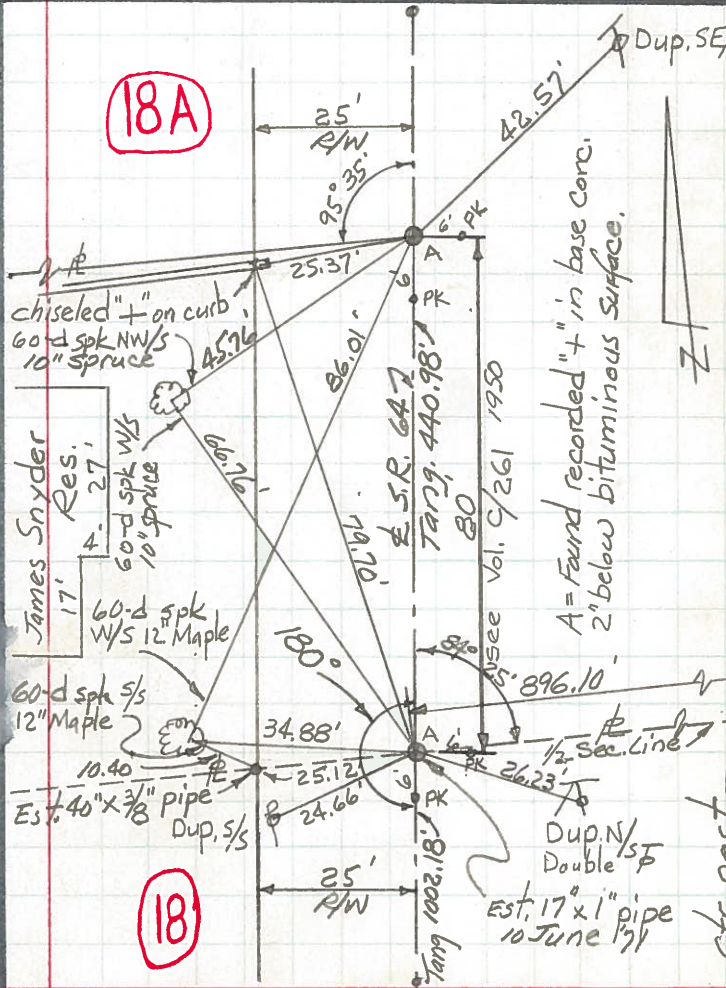
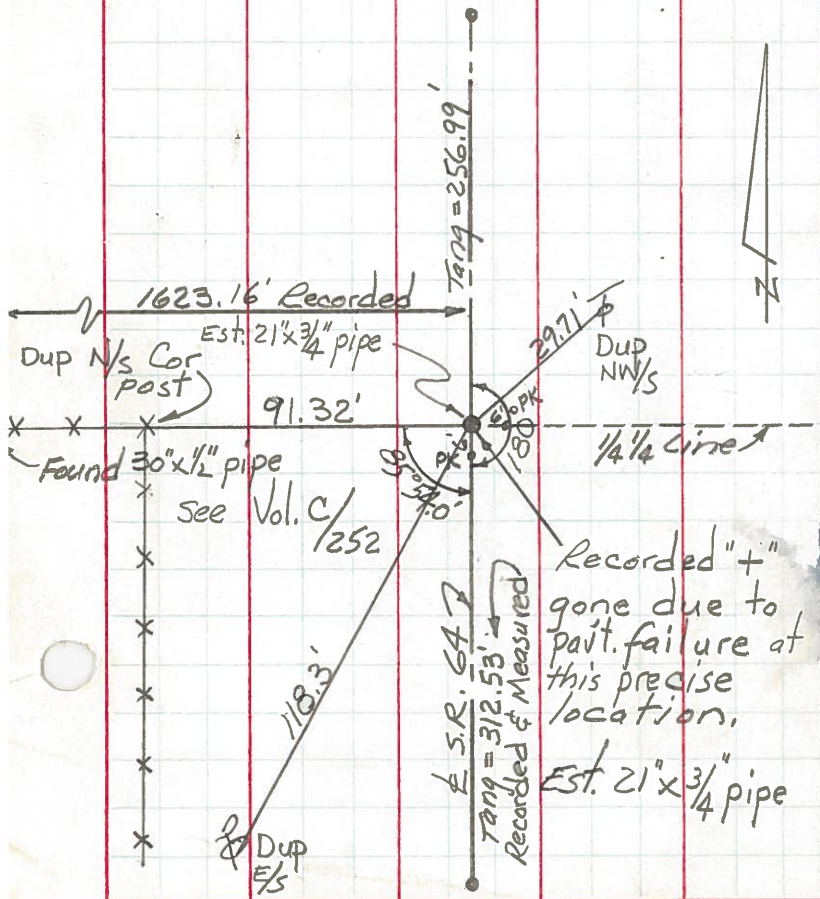
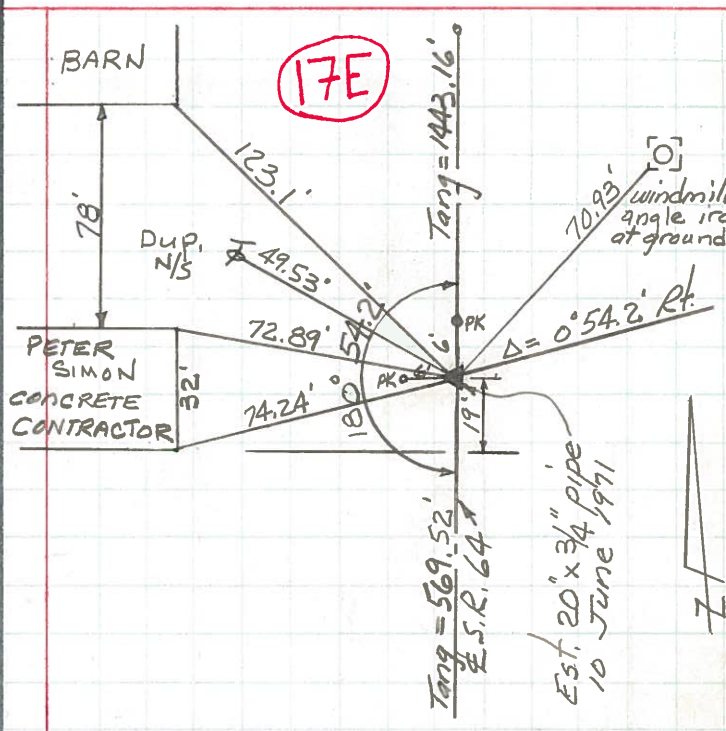
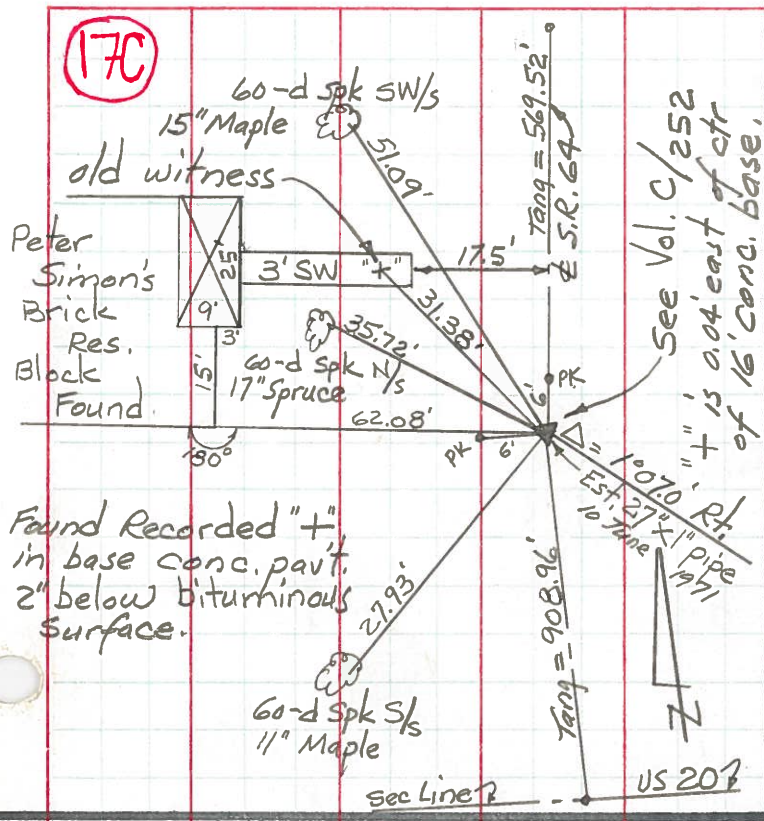


PERSONNEL	TITLE	PERSONNEL	TITLE	COUNTY	DATE	WEATHER	TEMP.
Tamsic		Boyle		Fulton	Aug 7, 1973		
Neuses				S. R. 64			
Granata				SEC. Amboy Twp			
Vandy							

DESCRIPTION	LEFT	CENTER LINE	RIGHT	JOB NO.
-------------	------	-------------	-------	---------



PERSONNEL	TITLE	PERSONNEL	TITLE	COUNTY	DATE
Red Beach				Fulton	May '71
Newcomb				S. R.	64
Knape				WEATHER	
Wise				SEC.	Amboy Twp
DESCRIPTION	CONTROL	Witnesses		TEMP.	
	LEFT	CENTER LINE	RIGHT	JOB NO.	



Found Recorded "+" in base conc. part. 2" below bituminous surface.

Recorded "+" gone due to part. failure at this precise location. Est. 21" x 3/4" pipe

A= Found recorded "+" in base conc. 2" below bituminous surface.