

O.D.O.T. DISTRICT 2 SURVEY OFFICE (USE ONLY)

PERSONNEL

REFERENCE NO. 18 A

SHEET 52 OF 59

NOTES RHOADES

DATE 6/22/21

ROUTE SR 64

H.C. AUBLE

WEATHER SUNNY

COUNTY FULTON

R.C. NIESE

TEMP. 59°

TOWNSHIP AMBOY

SECTION 23

DWG BY NIESE

PID 101213

T 9 S R 4 E

TYPE MONUMENT MAG/WASHER

ON SURFACE - ~~BELOW~~ ON

OFFSET 0.8' LT : RT

9.3' TO LT EDGE PAVEMENT

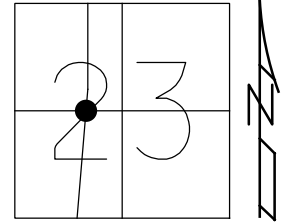
STATION: 426+64.56

HORZ.DATUM: NAD83(2011)

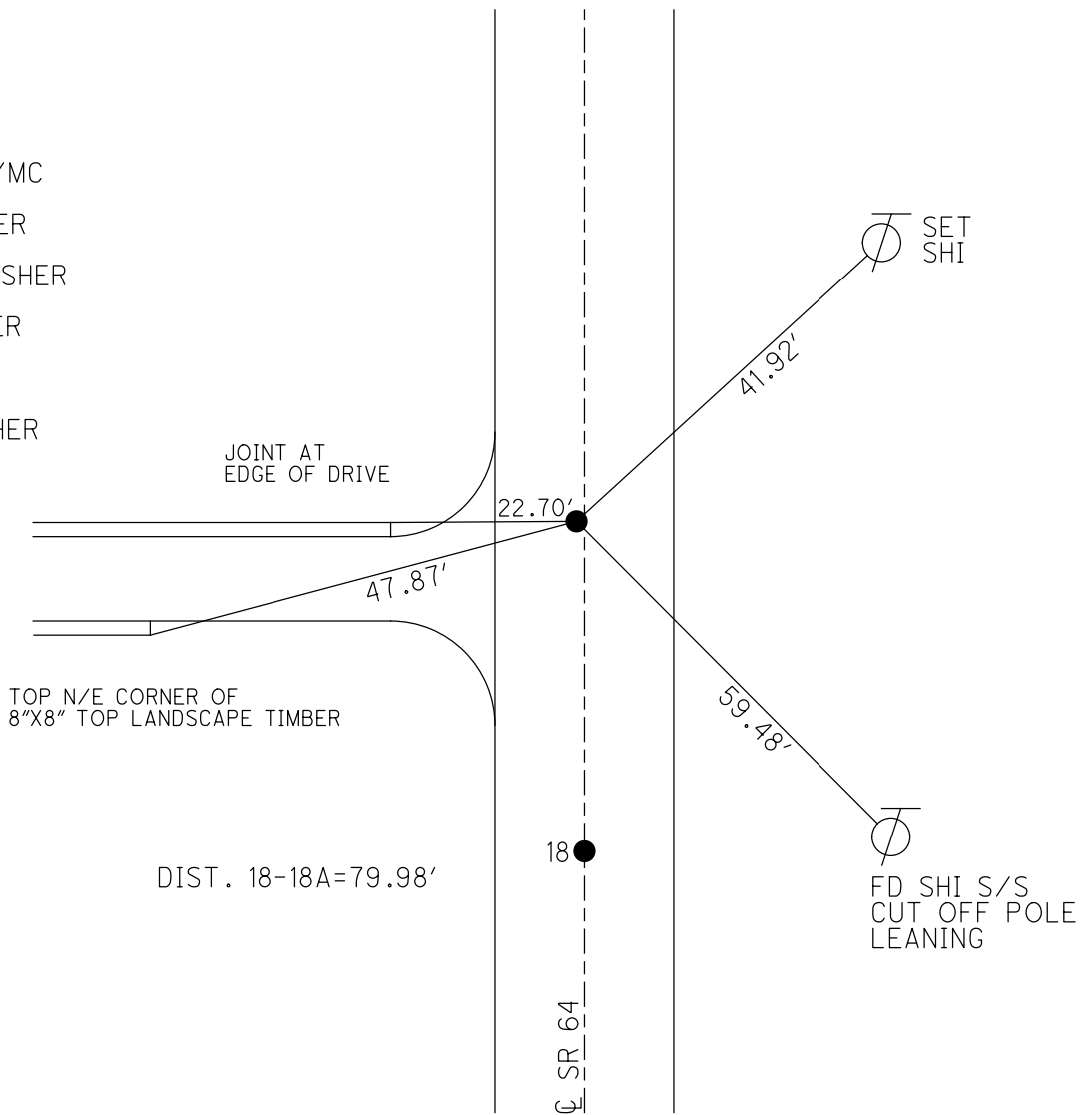
GEOID: NAVD88 2012A

GRID: NORTHING: 736311.455

EASTING: 1582975.994



RECORD:
 SET P.K.NAIL
 TO SURFACE
 6/26/86
 FD P.K.NAIL
 8/21/08, SAH/MC
 9/16/08, SAH
 FD P.K./WASHER
 5/27/10, SAH
 SET MAG & WASHER
 7/29/10, SAH
 FD MAG/WASHER
 REFA18
 10/17/19, JFO
 6/22/21, DSA
 SET MAG/WASHER
 11/3/21, DSA



O.D.O.T. DISTRICT 2 SURVEY OFFICE (USE ONLY)

PERSONNEL

REFERENCE NO.

18 A SHEET 32 OF 39

NOTES

HUSS

DATE

5-27-10

ROUTE

SR 64

H.C.

CANTERBURY

WEATHER

SUNNY

COUNTY

FULTON

R.C.

HUSS

TEMP.

83°

TOWNSHIP

AMBOY

SECTION

23

T 9 N R 4 E

TYPE MONUMENT

PK/WASHER

ON SURFACE - ~~BELOW~~

ON

LEFT - \odot PAV'T - ~~RIGHT~~

0.8'

9.3' TO LT EDGE PAVEMENT

S.L.M.

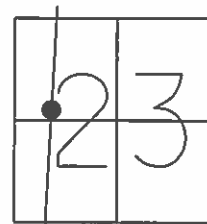
426+64.56

GRID: NOTHING:

736311.458

EASTING:

1582975.896

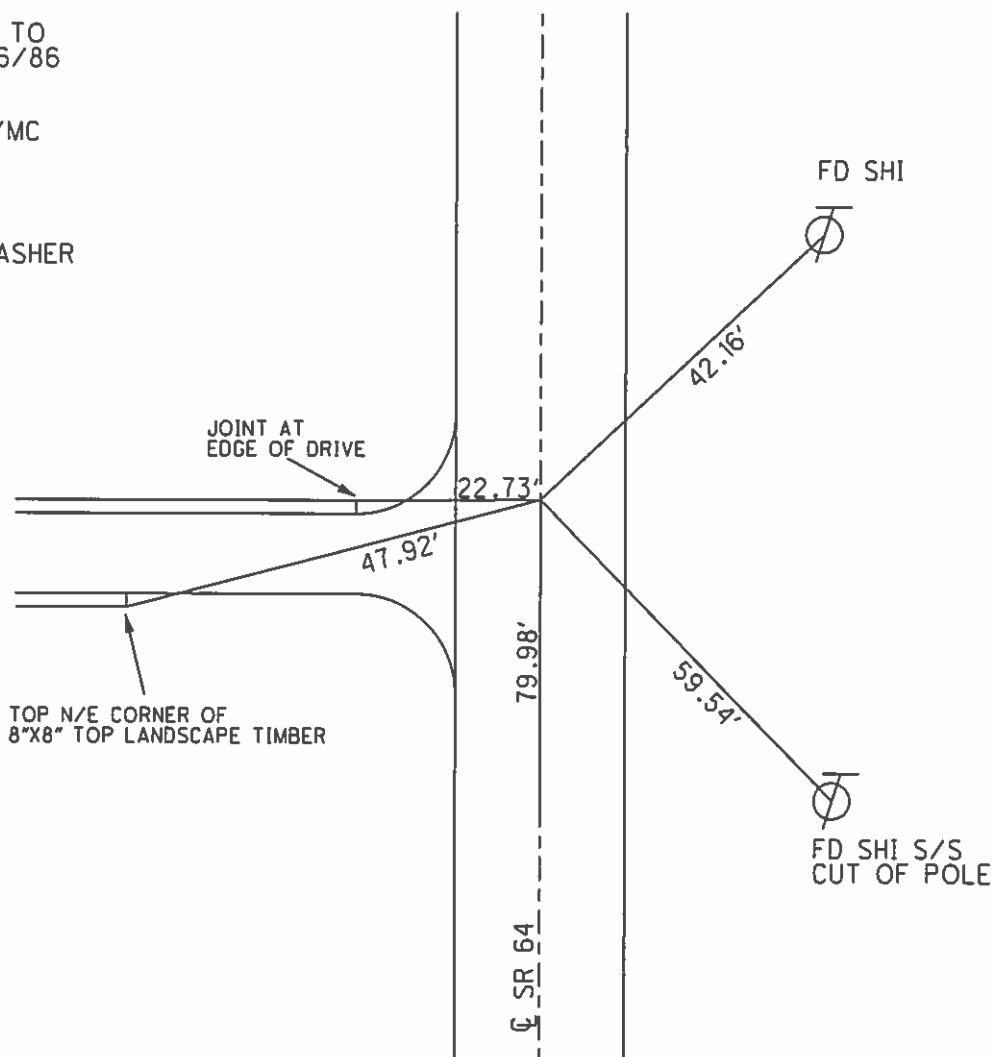


SET P.K.NAIL TO
SURFACE 6/26/86

FD P.K.NAIL
8/21/08 SAH/MC

REF A18, VRS
9/16/08 SAH

SET MAG & WASHER
7-29-10 SAH



O.D.O.T. DISTRICT 2 SURVEY OFFICE

PERSONNEL

REFERENCE NO. 18-A

SHEET 7 OF

NOTES 1. Stone

H.C. D. Curtis

R.C. J. Housholder

R. Michalak

DATE 29 April 86

WEATHER Cloudy

TEMP. 48°

ROUTE SR#64

COUNTY Fulton

TOWNSHIP Amboy

SECTION 23

T. R.

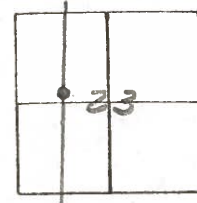
TYPE MONUMENT PK Nail

ON SURFACE - BELOW Surface

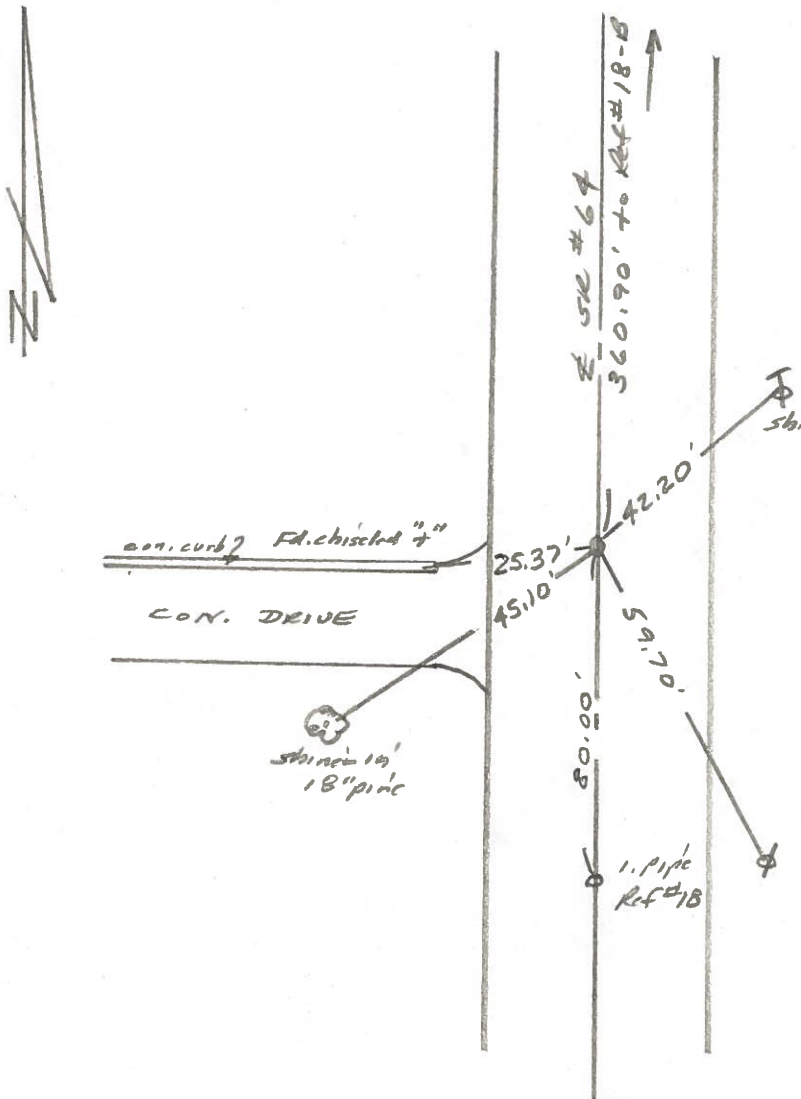
LEFT - & PAV'T. - RIGHT

TO EDGE PAVEMENT

S.L.M. 415+21



Set P.K. Nail To Surface -
6-26-86



PERSONNEL	TITLE	PERSONNEL	TITLE	COUNTY	DATE
Tomsic		Boyle		Fulton	Aug 13, 1973
Neuser				S. R. 64	WEATHER
Granata				SEC. Amboy	TEMP.
Vandy					

DESCRIPTION _____ LEFT _____ CENTER LINE _____ RIGHT _____ JOB NO. _____

