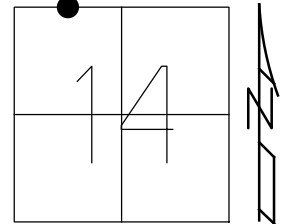


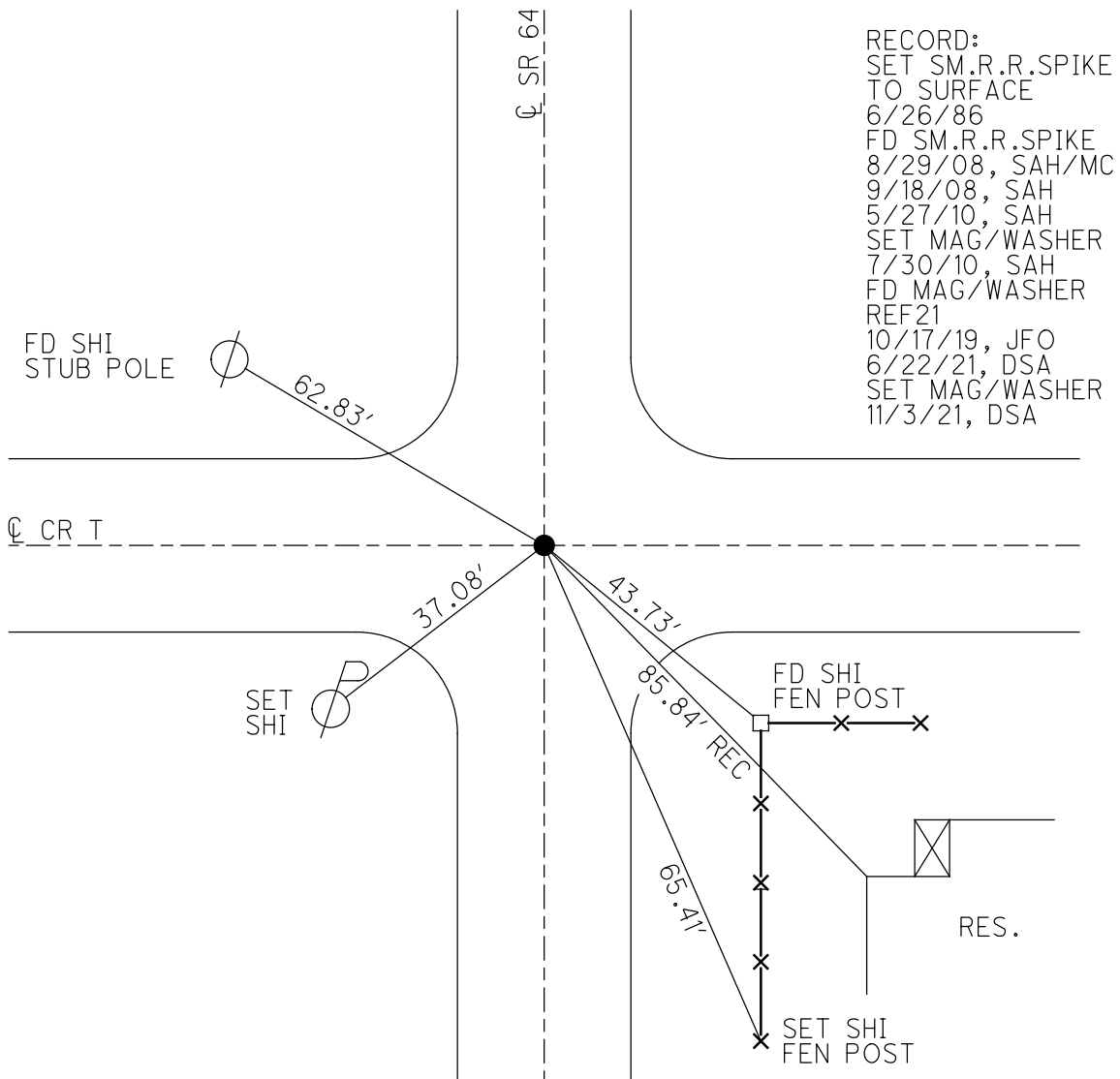
O.D.O.T. DISTRICT 2 SURVEY OFFICE (USE ONLY)

PERSONNEL _____ REFERENCE NO. 21 SHEET 57 OF 59
 NOTES RHOADES DATE 6/22/21 ROUTE SR 64
 H.C. AUBLE WEATHER CLOUDY COUNTY FULTON
 R.C. NIESE TEMP. 63° TOWNSHIP AMBOY
 DWG BY NIESE PID 101213 SECTION 14
 T 9 S R 4 E

TYPE MONUMENT MAG/WASHER
 ON SURFACE - ~~BELOW~~ ON
 OFFSET ☐ PAVEMENT ON LT : RT
- TO - EDGE PAVEMENT
 STATION: 510+13.18



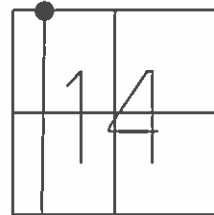
HORIZ.DATUM: NAD83(2011) GEOID: NAVD88 2012A
 GRID: NORTHING: 744184.370 EASTING: 1582505.072



O.D.O.T. DISTRICT 2 SURVEY OFFICE (USE ONLY)

PERSONNEL _____ REFERENCE NO. 21 SHEET 37 OF 39
 NOTES HUSS DATE 5-27-10 ROUTE SR 64
 H.C. CANTERBURY WEATHER SUNNY COUNTY FULTON
 R.C. HUSS TEMP. 84° TOWNSHIP AMBOY
 _____ SECTION 14
 _____ T 9 N R 4 E

TYPE MONUMENT _____ SM. RR SPIKE
 ON SURFACE - ~~BELOW~~ _____ ON _____
 LEFT - ☉ PAV'T - RIGHT _____ ON _____
 _____ TO _____ EDGE PAVEMENT
 S.L.M. _____ 510+13.07
 GRID: NOTHING: 744184.391 EASTING: 1582504.953



SET SM RR SPIKE TO SURFACE 6/26/86

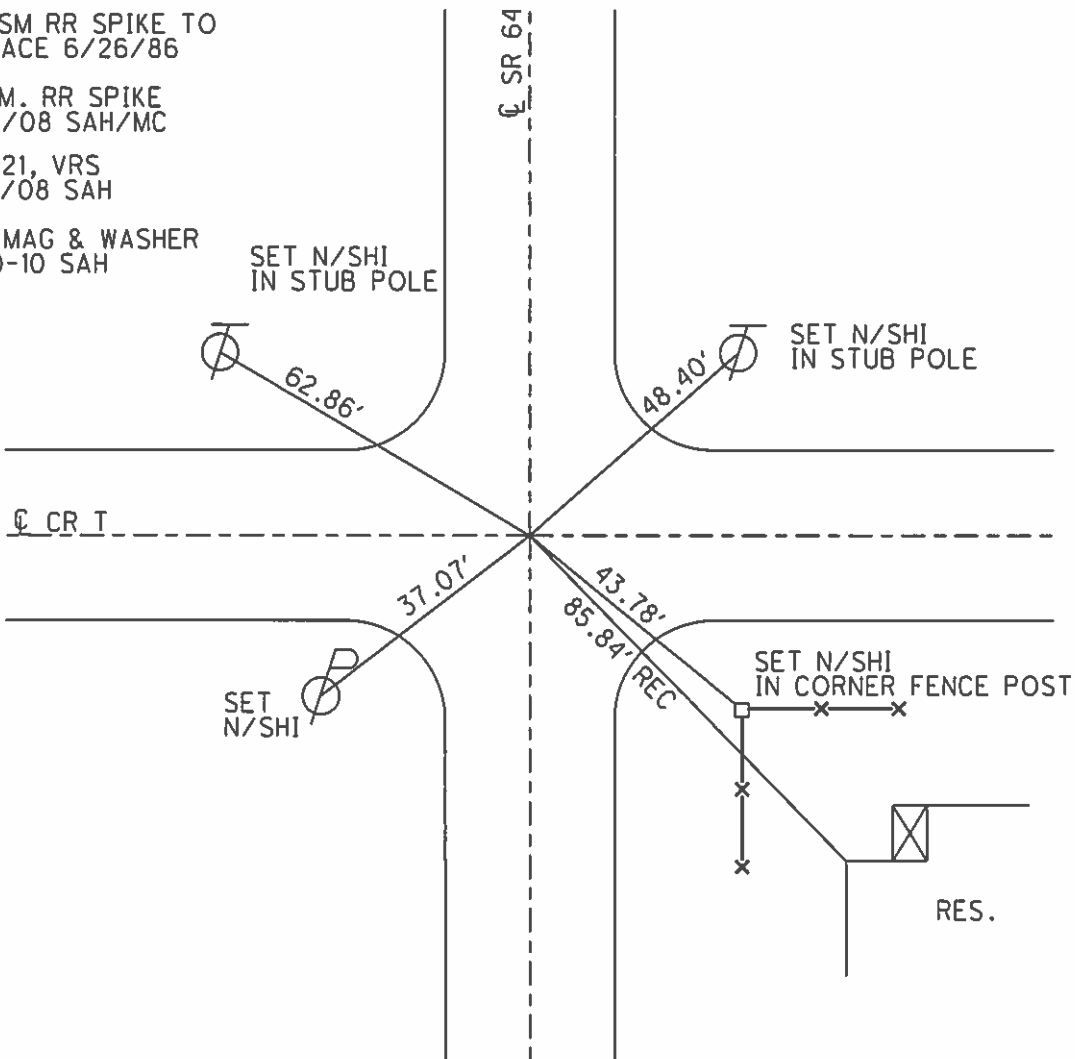
FD SM. RR SPIKE 8/29/08 SAH/MC

REF 21, VRS 9/18/08 SAH

SET MAG & WASHER 7-30-10 SAH

SET N/SHI IN STUB POLE

SET N/SHI IN STUB POLE



O.D.O.T. DISTRICT 2 SURVEY OFFICE

PERSONNEL

REFERENCE NO. 21

SHEET 12 OF

NOTES 1. Stone

H.C. D. Curtis

R.C. J. Hausholder

R. Michalak

DATE 29 April 86

WEATHER Cloudy

TEMP. 52°

ROUTE SR #64

COUNTY Fulton

TOWNSHIP Amboy

SECTION 14

T R

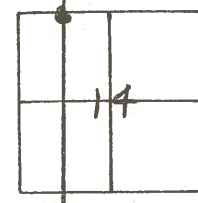
TYPE MONUMENT 1" I. pipe

ON SURFACE - BELOW 2" deep

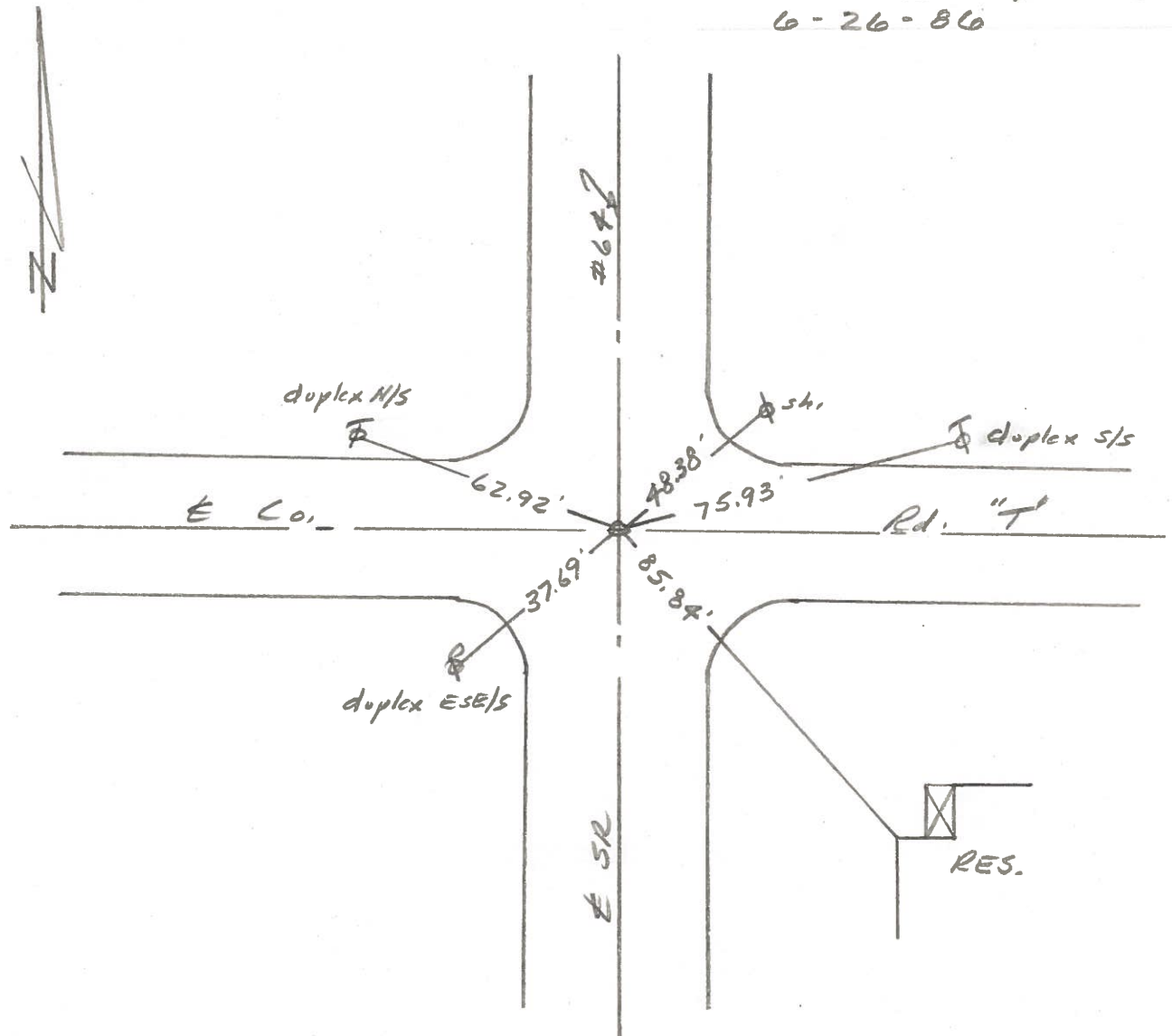
LEFT - \odot PAW'T. - RIGHT

TO EDGE PAVEMENT

S.L.M. 498+70

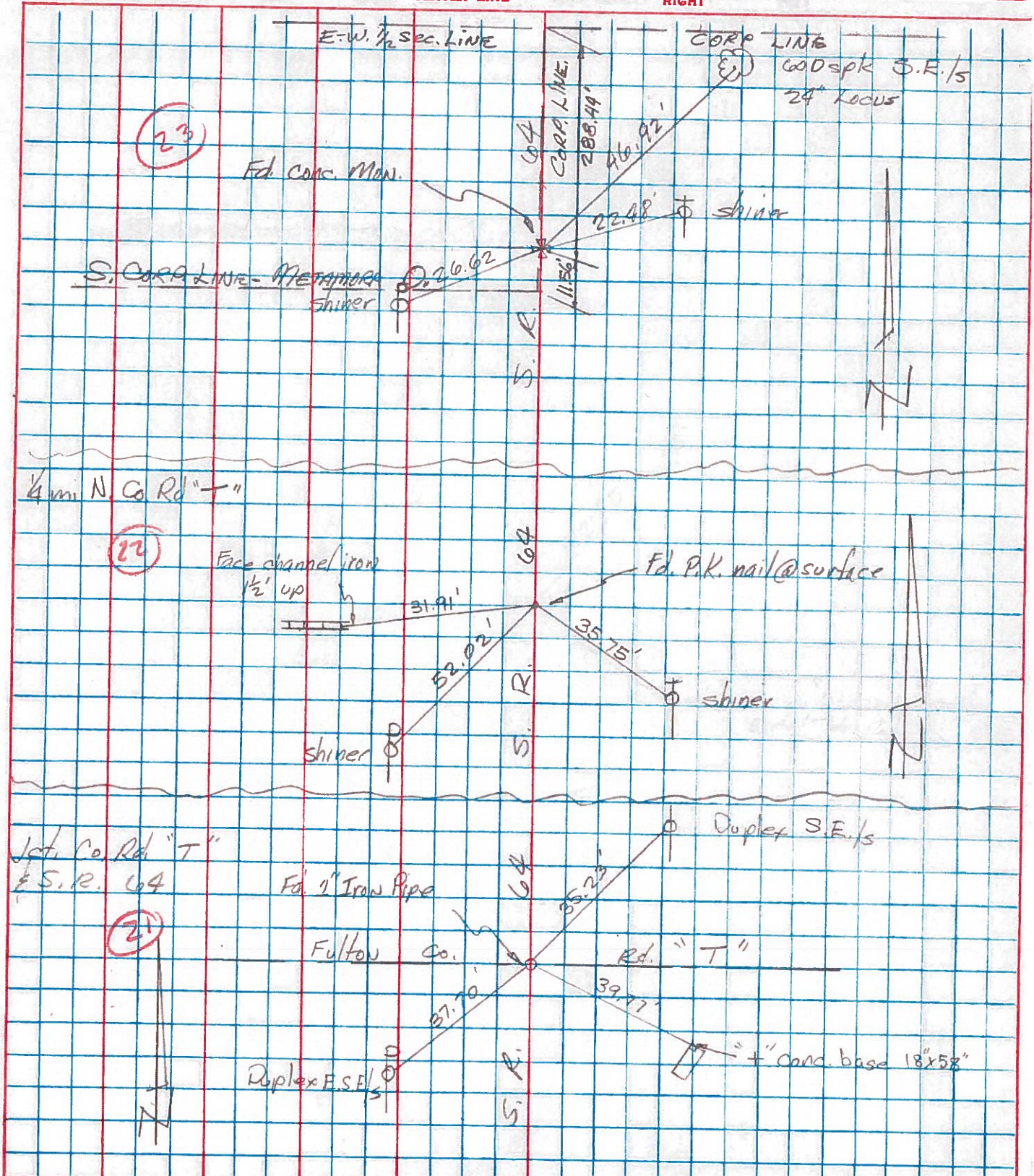


Set Sm. R.R. Spk. To Surface -
6-26-86



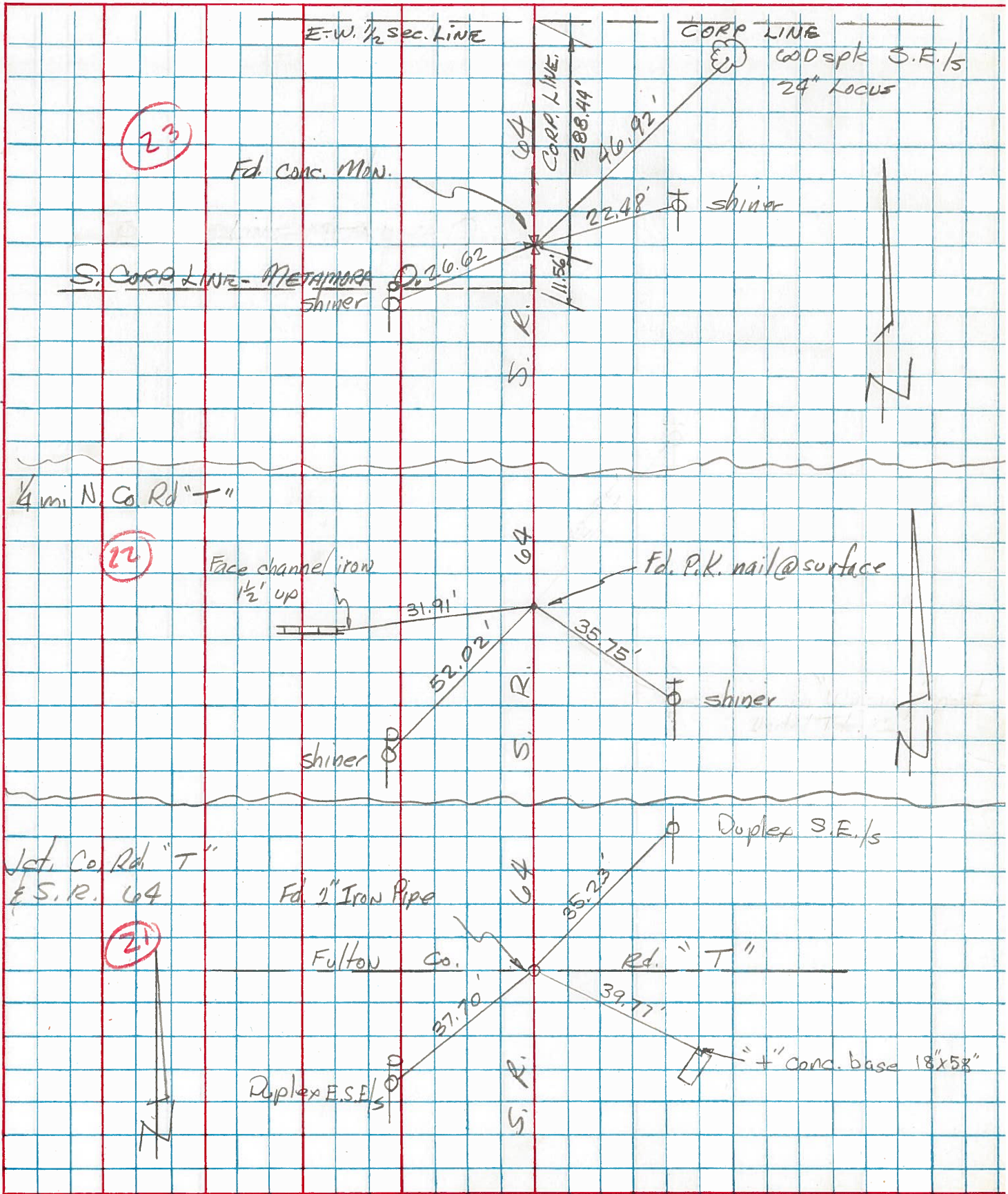
PERSONNEL	TITLE	PERSONNEL	TITLE	COUNTY	DATE	WEATHER	TEMP.
Tamsic		Boyle		Fulton	AUG 19 1973		
Nasser				S. R. 64			
Granata				SEC. Amboy			
Vanyo							

DESCRIPTION _____ LEFT _____ CENTER LINE _____ RIGHT _____ JOB NO. _____



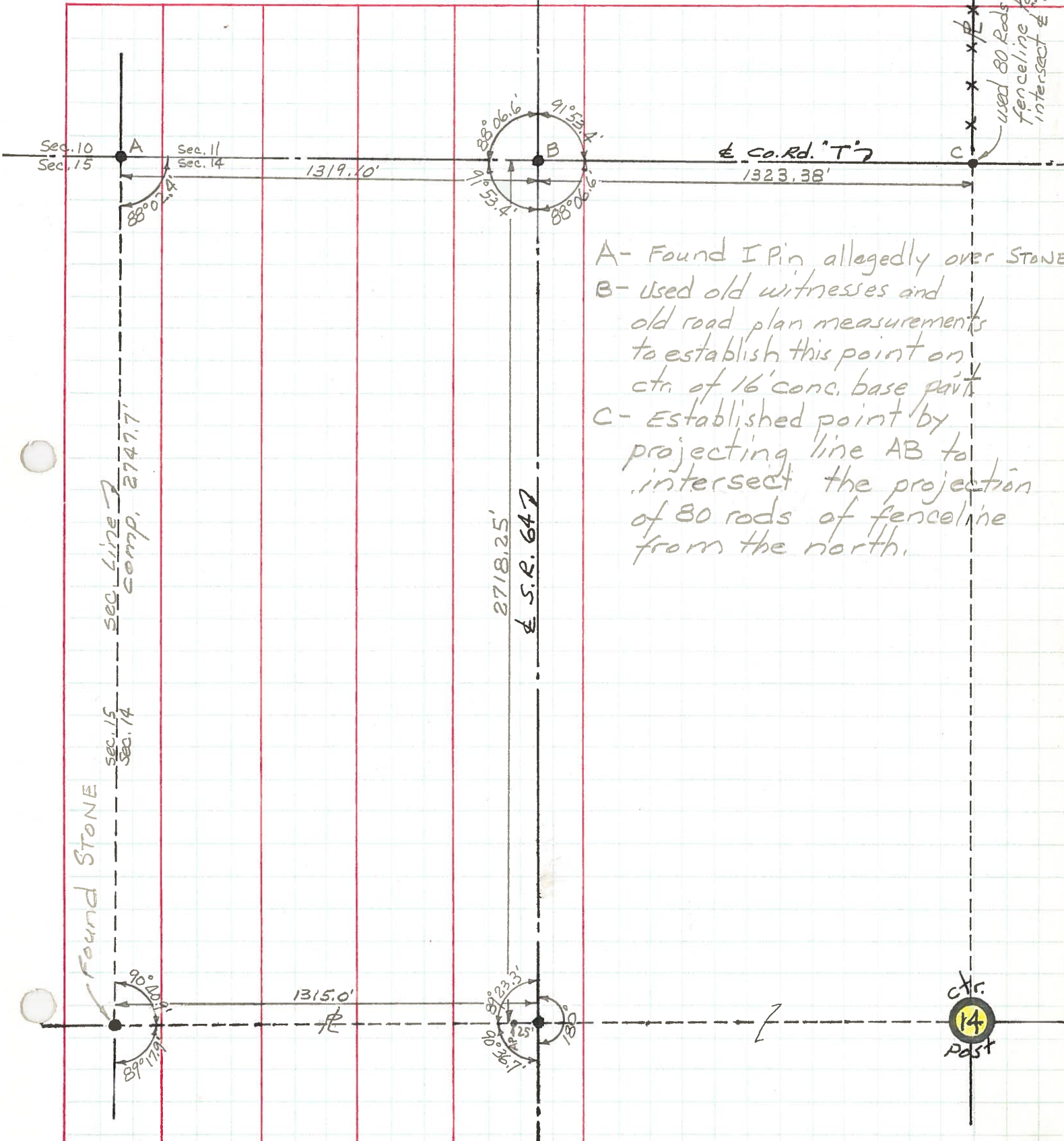
PERSONNEL	TITLE	PERSONNEL	TITLE	COUNTY	DATE	WEATHER	TEMP.
Tomsic		Boyle		Fulton	AUG 19 1977		
Neusser				S. R. 64			
Granata				SEC. Amboy			
Vanyo							

DESCRIPTION _____ LEFT _____ CENTER LINE _____ RIGHT _____ JOB NO. _____



PERSONNEL	TITLE	PERSONNEL	TITLE	COUNTY	DATE
Red Beach				Fulton	June 1971
Newcomb				S. R. 64	WEATHER
Knappe				SEC. NW 1/4 Sec. 14, Amboy Twp.	TEMP.
Wise					

DESCRIPTION	ALIGNMENT	CONTROLS	JOB NO.
	LEFT	CENTER LINE	RIGHT



A- Found I Pin allegedly over Stone
 B- used old witnesses and old road plan measurements to establish this point on ctr. of 16' conc. base part
 C- Established point by projecting line AB to intersect the projection of 80 rods of fence line from the north.

PERSONNEL TITLE PERSONNEL TITLE

Red Beach
Newcomb
Knape
Wise

COUNTY Fulton DATE June '71

S. R. 64 WEATHER

SEC. Amboy Twp. TEMP.

DESCRIPTION CONTROL POINTS JOB NO.

