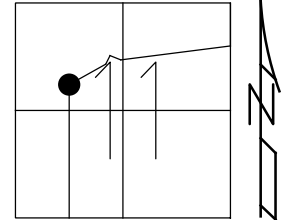


O.D.O.T. DISTRICT 2 SURVEY OFFICE (USE ONLY)

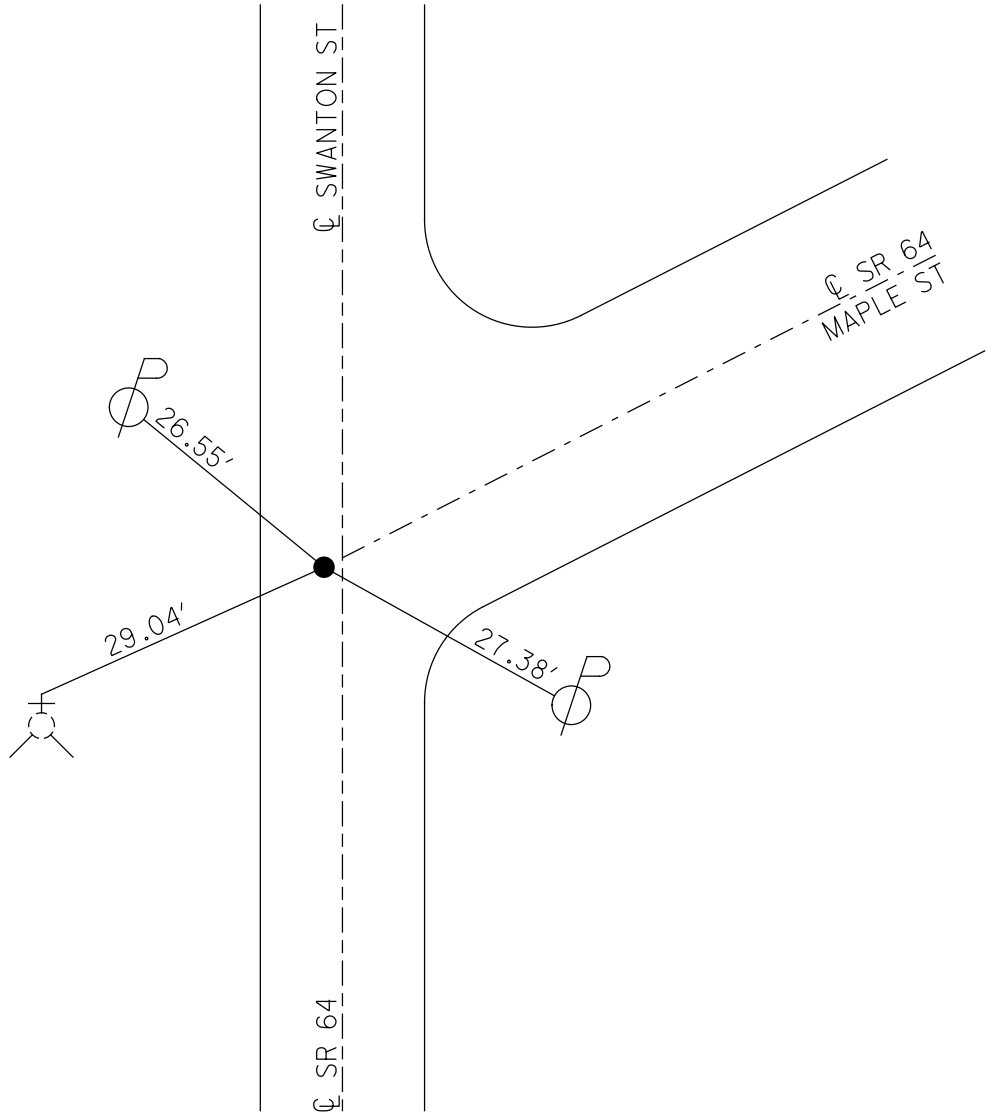
PERSONNEL _____ REFERENCE NO. 23 B SHEET 2 OF 10
 NOTES RHOADES DATE 6/22/21 ROUTE SR 64
 H.C. AUBLE WEATHER CLOUDY COUNTY FULTON
 R.C. NIESE TEMP. 63° TOWNSHIP AMBOY
 DWG BY NIESE PID 101213 SECTION 11
 T 9 S R 4 E

TYPE MONUMENT R.R. SPIKE
~~ON SURFACE~~ - BELOW 3.5"
 OFFSET \odot PAVEMENT 3.0' LT : ~~RT~~
- TO - EDGE PAVEMENT
 STATION: 543+16.84



HORZ. DATUM: NAD83(2011) GEOID: NAVD88 2012A
 GRID: NORTHING: 747487.973 EASTING: 1582486.789

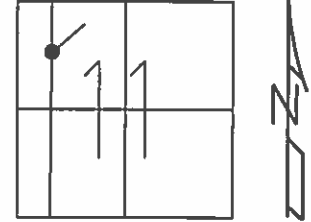
RECORD:
 FD IPIN
 IN CONC.
 4/29/86
 SET SM.R.R.SPIKE
 7/1/86
 FD R.R. SPIKE
 8/8/07, DSA
 FD SM.R.R.SPIKE
 3 1/2" DOWN
 REF BG23
 10/18/19, JFO
 6/22/21, DSA
 SET MAG/WASHER
 11/3/21, DSA



O.D.O.T. DISTRICT 2 SURVEY OFFICE (USE ONLY)

PERSONNEL _____ REFERENCE NO. 23 B SHEET 2 OF 8
 NOTES HOMAN _____ DATE 8/8/07 ROUTE SR 64
 H.C. ROUSOS _____ WEATHER SUNNY COUNTY FULTON
 R.C. HOUDSHELL _____ TEMP. 80° TOWNSHIP AMBOY
 VEITH _____ SECTION 11
 _____ T 9 N R 4 E

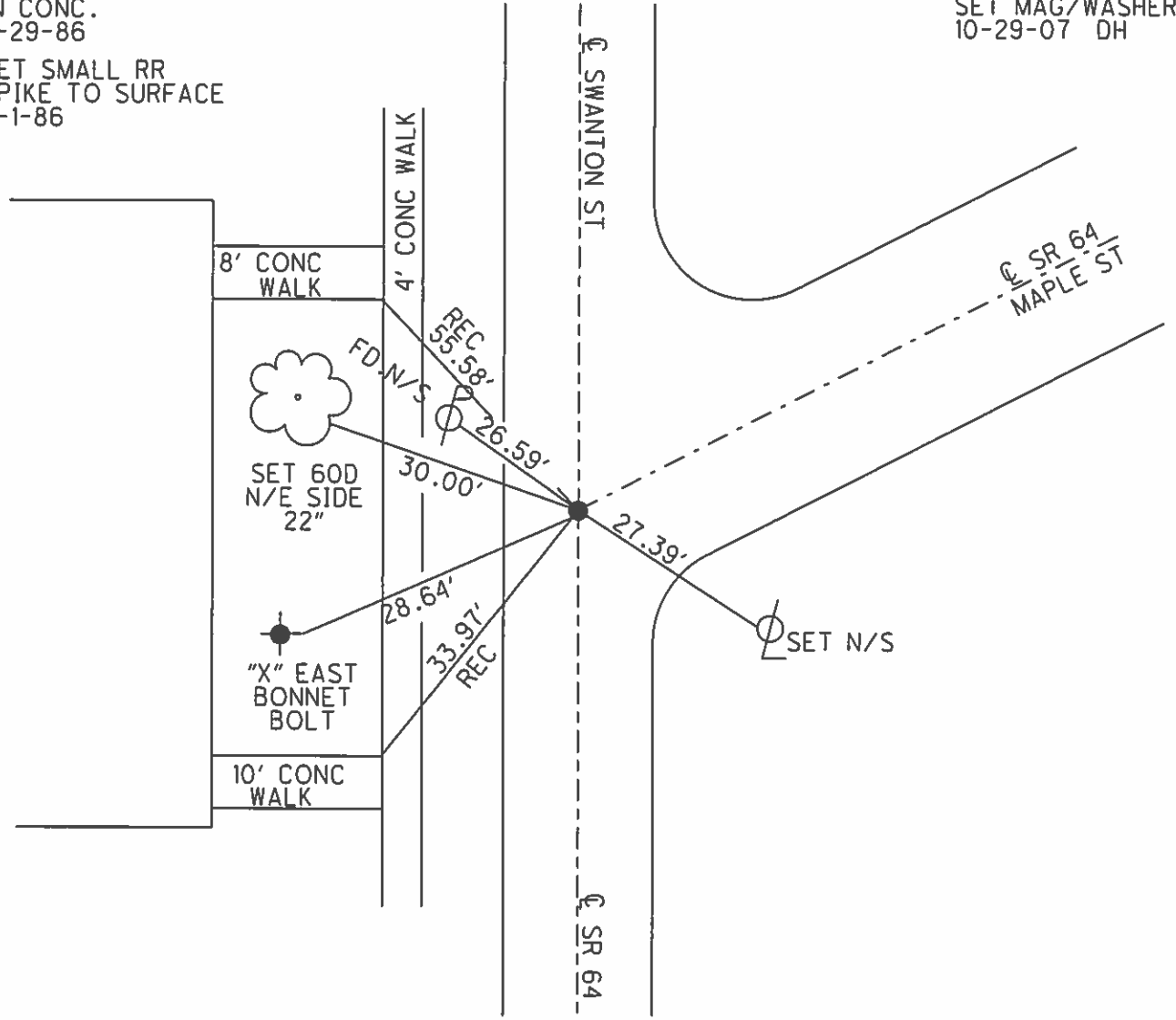
TYPE MONUMENT R.R. SPIKE
 ON SURFACE - ~~BELOW~~ ON _____
 LEFT - ~~PAV'T~~ - RIGHT 3'
 - TO - EDGE PAVEMENT
 S.L.M. 530+64



GRID: NORTHING: 747487.944 EASTING: 1582486.646

FD. IRON ROD
 IN CONC.
 4-29-86
 SET SMALL RR
 SPIKE TO SURFACE
 7-1-86

SET MAG/WASHER
 10-29-07 DH



O.D.O.T. DISTRICT 2 SURVEY OFFICE

PERSONNEL

REFERENCE NO. 23-B

SHEET 15 OF

NOTES 1. Stooz

H.C. D. Curtis

R.C. J. Householder

R. Michalak

DATE 29 April 86

WEATHER Cool

TEMP. 53°

ROUTE SR #64

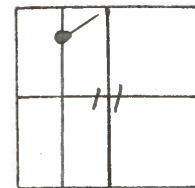
COUNTY Fulton

TOWNSHIP Ambrog

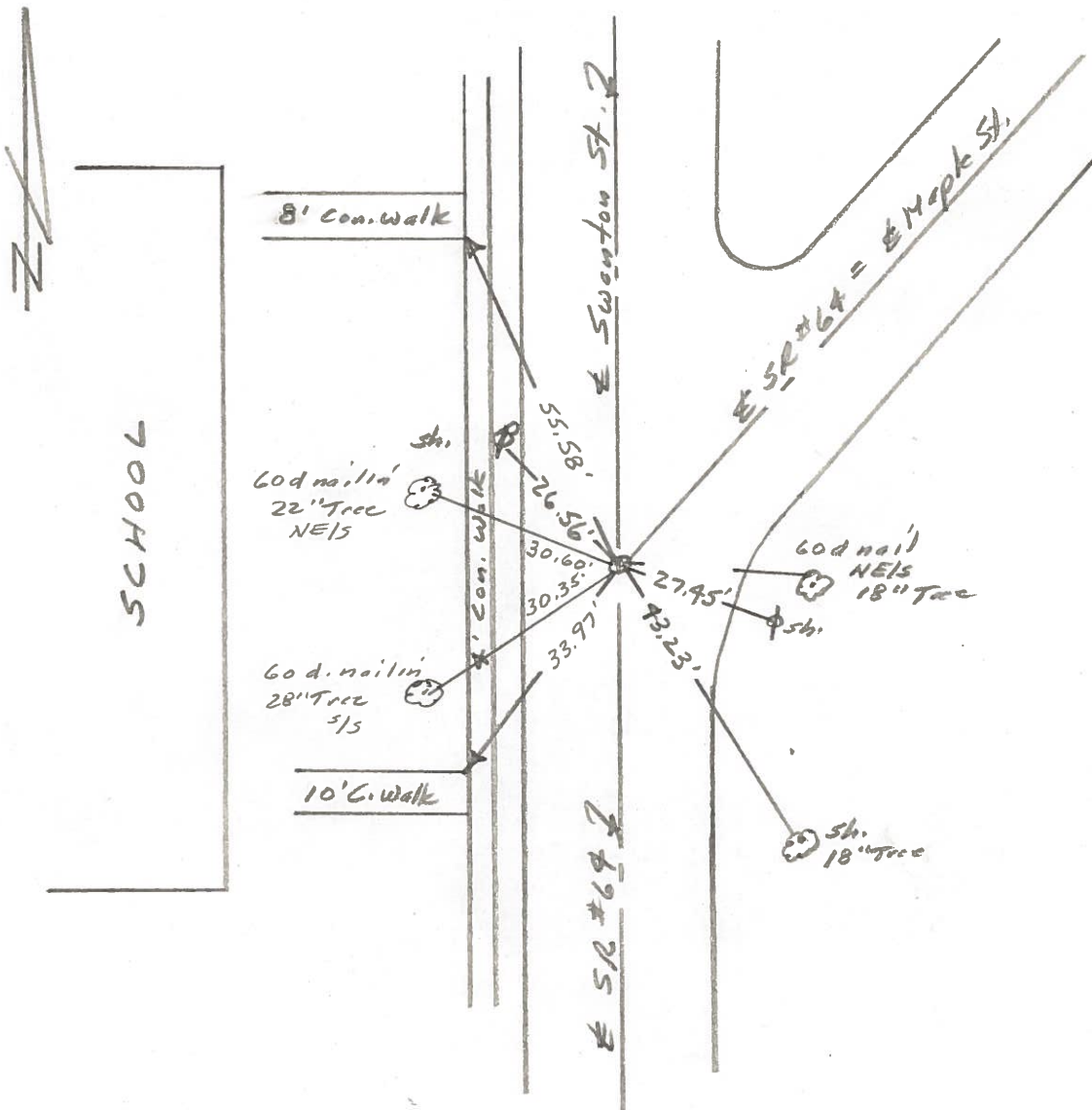
SECTION 11

T R

TYPE MONUMENT 1" I. rod in con.
 ON SURFACE - BELOW 2" deep
 LEFT - ☉ PAV'T. - RIGHT
 TO EDGE PAVEMENT
 S.L.M.



Set Sm. R.R. Spk. To Surface -
7-1-86



PERSONNEL TITLE PERSONNEL TITLE

COUNTY Fulton

DATE AUG. 14, 1973

Tovmsic

Neuser

Granata

Vanyo

S. R. 64

WEATHER

SEC. Amboy

TEMP.

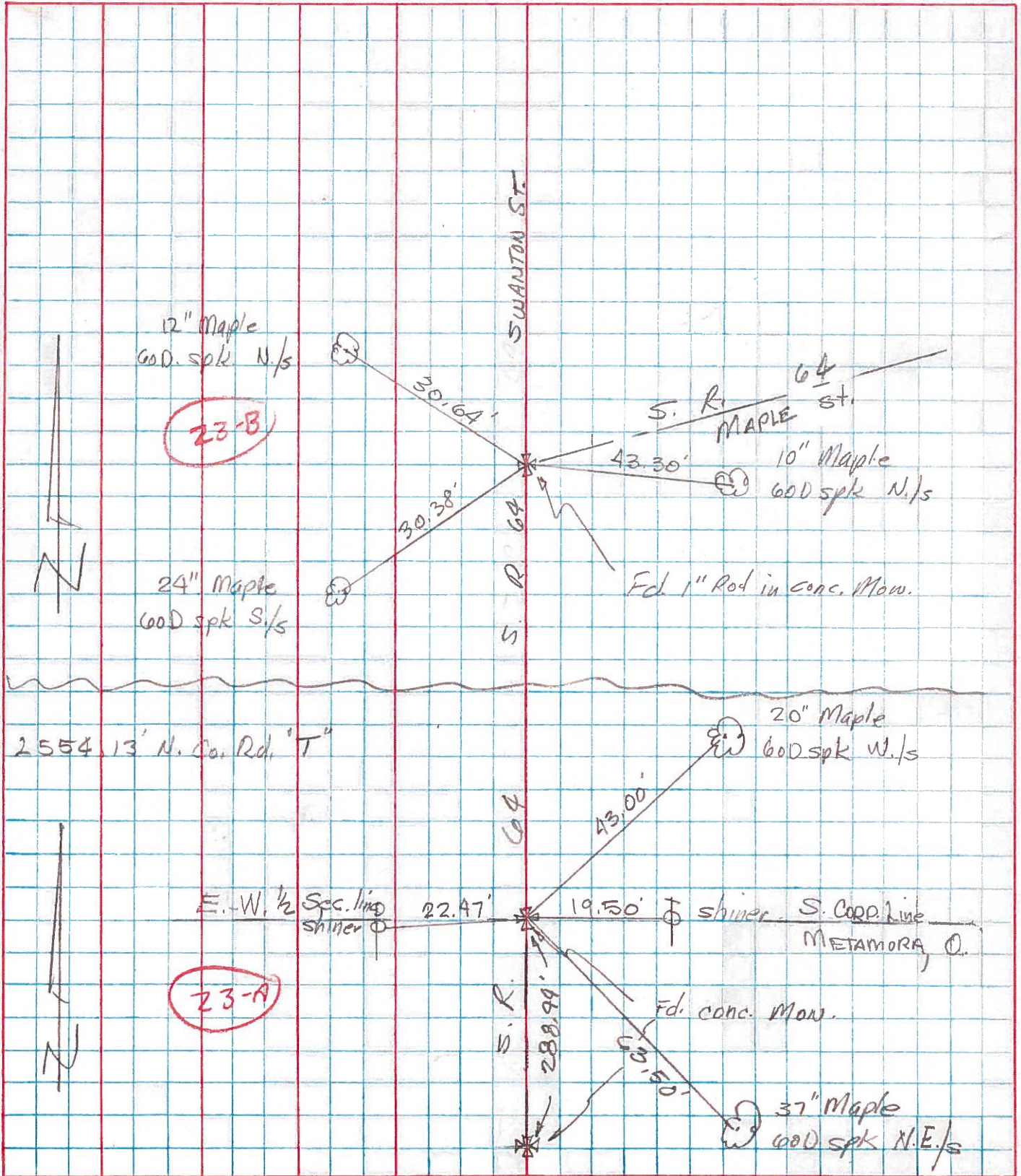
DESCRIPTION

LEFT

CENTER LINE

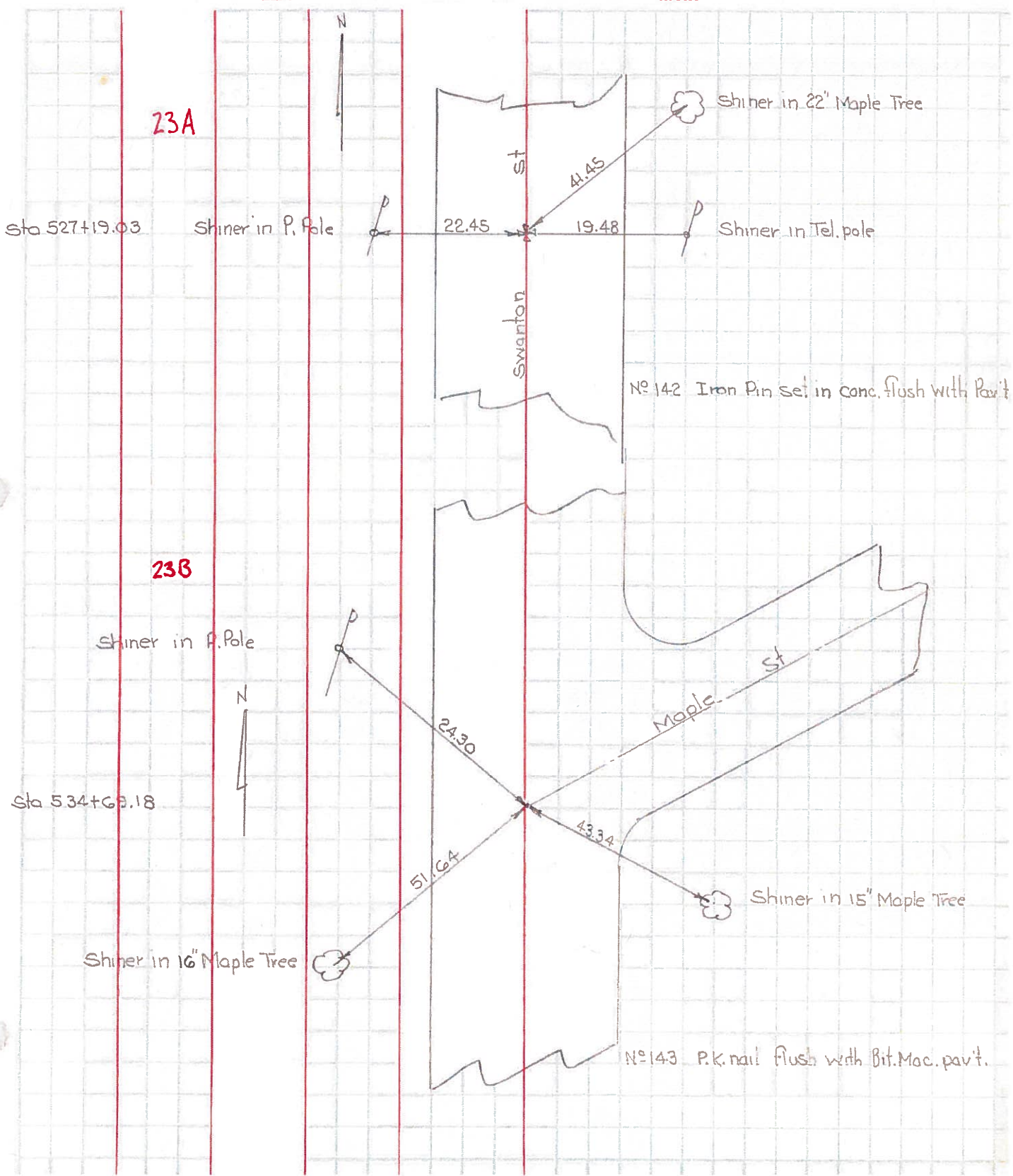
RIGHT

JOB NO.



PERSONNEL	TITLE	PERSONNEL	TITLE	COUNTY	DATE
Denno				Fulton	June 6, 1966
Curtis				S. R. 64	WEATHER Cloudy
Granata				SEC.	TEMP. 80'
Orney					

DESCRIPTION Monument Ref S.R. 64 Metamora JOB NO. _____



PERSONNEL TITLE PERSONNEL TITLE

Kujawa
Beck
Carpenter

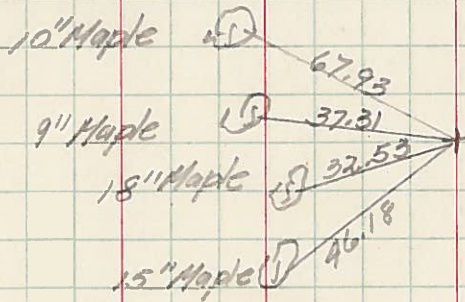
COUNTY Fulton DATE 12/10/52

S. R. 64 & 120 WEATHER Cold

SEC. _____ TEMP. 40

DESCRIPTION Intersections & mon. Refer. in Metamora JOB NO. 02119

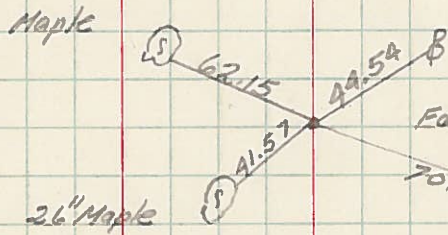
LEFT CENTER LINE RIGHT



"7" in pavement

Sta 524+30.4

Begin Survey
South Corp. Line



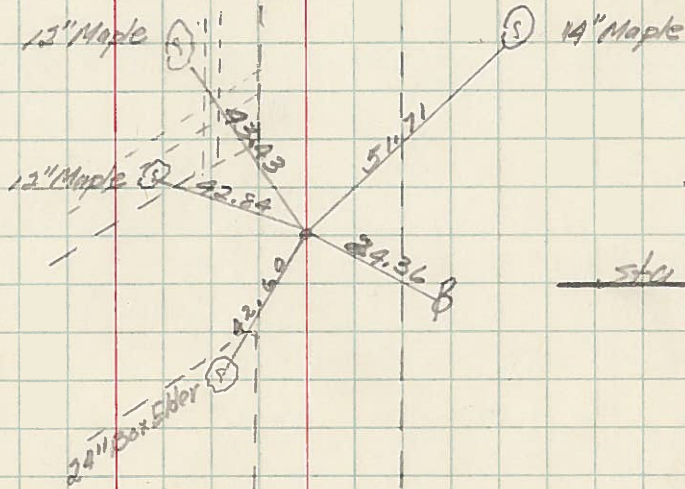
Fd I. Pin 1" N. of joint

cor. Found. 3" high
Res.

Sta 527+19.03



23B



School

Sta 534+69.18