

O.D.O.T. DISTRICT 2 SURVEY OFFICE (USE ONLY)

PERSONNEL

REFERENCE NO. 24 B

SHEET 9 OF 10

NOTES RHOADES

DATE 6/23/21

ROUTE SR 64

H.C. AUBLE

WEATHER CLOUDY

COUNTY FULTON

R.C. NIESE

TEMP. 63°

TOWNSHIP AMBOY

SECTION 11

DWG BY NIESE

PID 101213

T 9 S R 4 E

TYPE MONUMENT R.R.SPIKE

~~ON SURFACE~~ - BELOW 2"

OFFSET ☉ PAVEMENT ON LT : RT

- TO - EDGE PAVEMENT

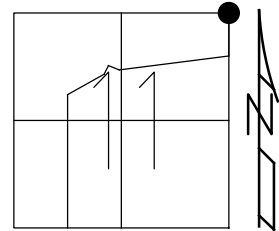
STATION: 596+33.95

HORIZ.DATUM: NAD83(2011)

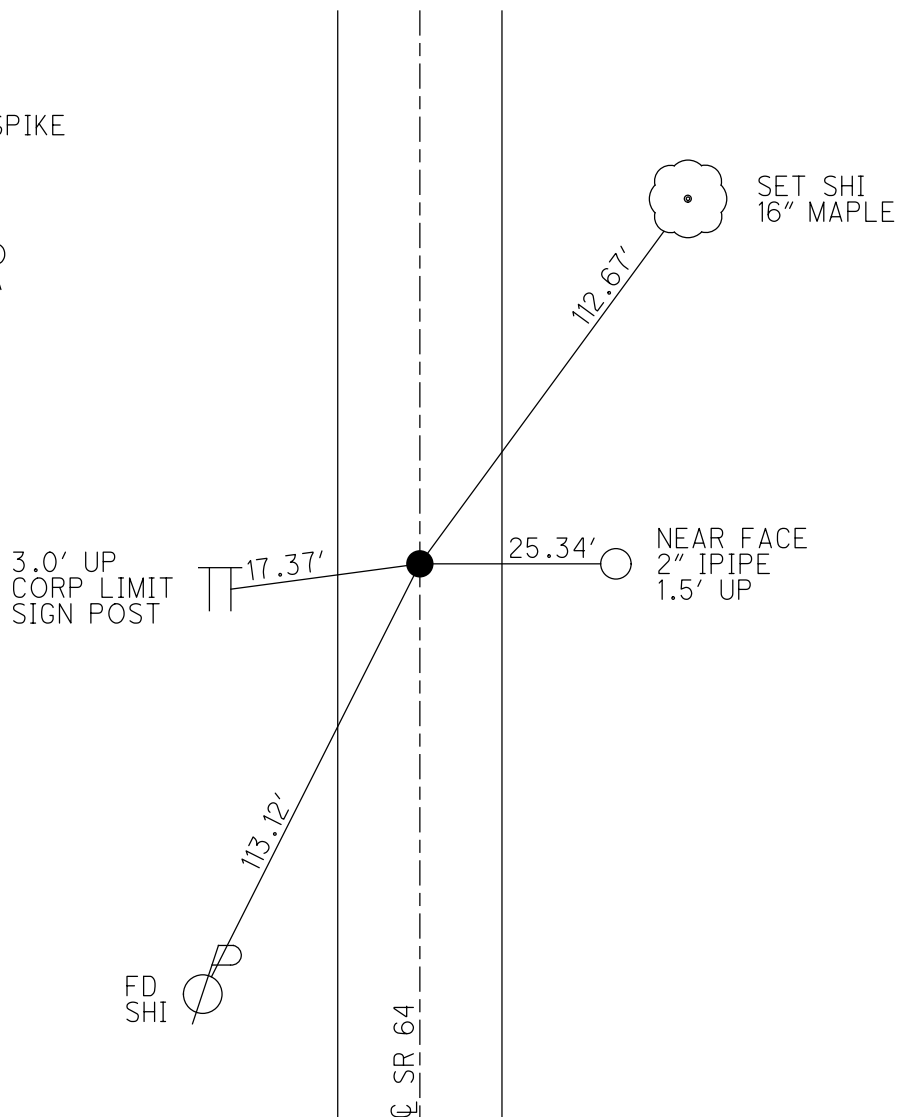
GEOID: NAVD88 2012A

GRID: NORTHING: 749453.225

EASTING: 1586415.692



RECORD:
 FD R.R.SPIKE
 5/1/86, IRS
 SET SM.R.R.SPIKE
 7/1/86
 FD R.R.SPIKE
 2" DOWN
 REFB24
 10/18/19, JFO
 6/23/21, DSA
 SET DRILLH
 IN RPM N/S
 11/4/21, DSA



O.D.O.T. DISTRICT 2 SURVEY OFFICE (USE ONLY)

PERSONNEL

REFERENCE NO. 24 B

SHEET 9 OF 10

NOTES STONE

DATE 5/1/86

ROUTE SR 64

H.C. CURTIS

WEATHER CLOUDY

COUNTY FULTON

R.C. HOUSEHOLDER

TEMP. 60°

TOWNSHIP AMBOY

MICHALAK

SECTION 11

DWG BY NIESE PID _____

T 9 S R 4 E

TYPE MONUMENT R.R. SPIKE

ON SURFACE - ~~BELOW~~ ON

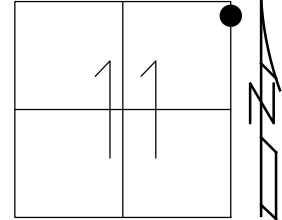
OFFSET Q PAVEMENT ON LT : RT

- TO - EDGE PAVEMENT

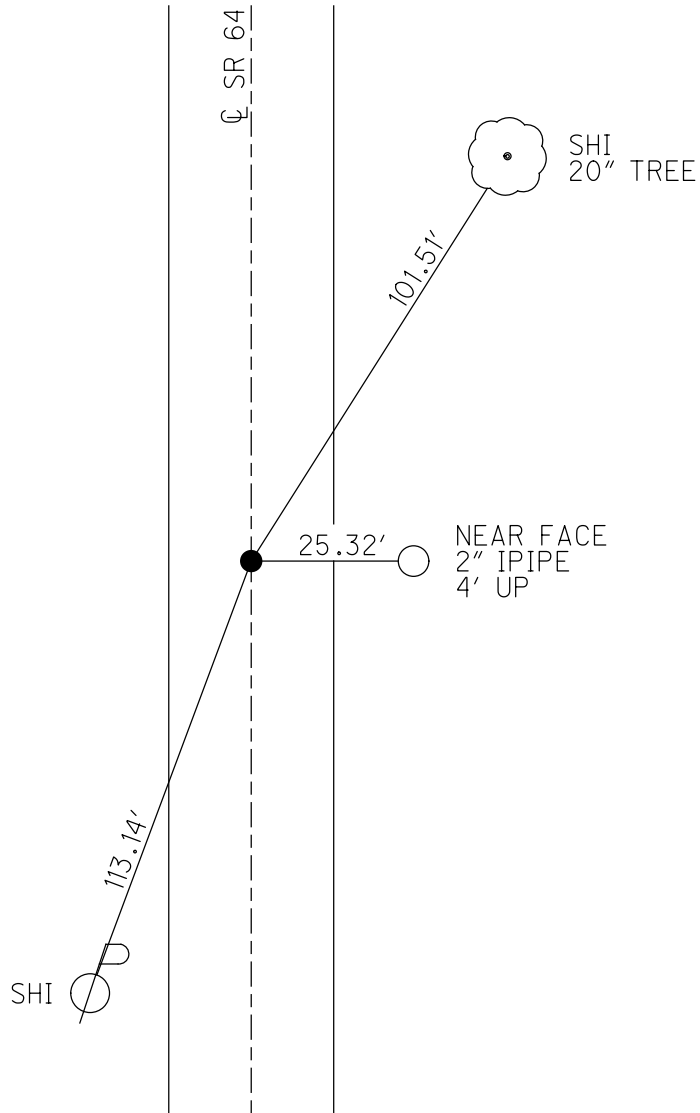
STATION: 584+67

HORIZ.DATUM: - GEOID: -

GRID: NORTHING: - EASTING: -



RECORD:
SET SM RR SPIKE
7/1/86



2677.534'

Form #1
to
"DEN 54"



KOHLI & KALIHAR ASSOCIATES, INC.
CONSULTING ENGINEERS & SURVEYORS 311 EAST MARKET, LIMA, OHIO 45801

PROJECT BRIDGE Ful-64-10.93 COUNTY FULTON SECTION _____

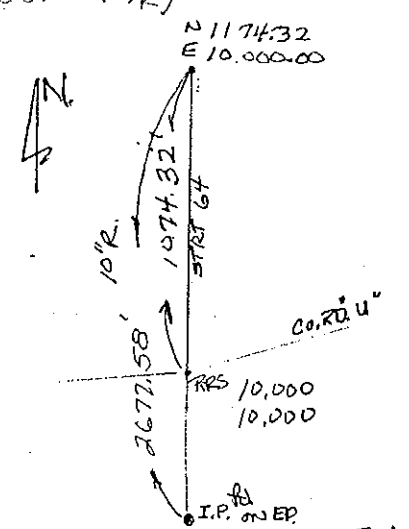
PARTY CHIEF BIBLER, HILE, BUETTNER DATE 12th APRIL 2000 NO. _____ OF _____ SHEETS

SUBJECT OF THIS SHEET HO 13. CONTROL

3: 10:00 AM
1/2 DUTY MAN

Sta. 58791.45
Sta. 57711.45

1080.00' (C/R)



Sta. 587+91.45
(R)

(20) K&K
RRS. (ie mining SPIKE) FD ON SURFACE
N 1174.32
E. 10,000.00
Tinst h = 5.64' Elev. 719.59
"DEN 50"

STRT. 64

524.94' to Mont. C

4.65 @ 40

K&K. HUB & TACK C.P. (40)
N 10364.442
E. 10058.068

ELEV. 711.34
(29)

TEN MILE

580+45.375

CREEK

C.P. (30) K&K. HUB & TACK
N. 10291.042
E. 9935.453
ELEV. 710.21
(175)

B.M. [sq.]
elev. 715.75

04-13-2000 Thursday
Tinst @ (40)
T B/S @ (20) h = 5.24'
h = 5.54'
T @ (30) h = 5.26'
office

578+00
@ 57+800.00 = 82.87'

@ 1:49 called JAF
04-11-2000

Adj. 577+17.13
K&K. STA. 577+17.13
(R)

CO. RD. "U"

(50) h 5.15' N. 13751.859
E. 10,000.130

T B/S 5.24'
RRS FD. ON SURFACE
ELEV. 717.97
"DEN 54"
N: 10+000
E 10+000
(10)

CO. RD. 2

11.07

O.D.O.T. DISTRICT 2 SURVEY OFFICE

PERSONNEL

REFERENCE NO. 24-B

SHEET 21 OF

NOTES 1. Stone

H.C. D. Curtis

R.C. J. Henscholder

R. Michalak

DATE 1 May 86

WEATHER Cloudy

TEMP. 60°

ROUTE SR#64

COUNTY Fulton

TOWNSHIP Amberg

SECTION 1-2-11-12

T R

TYPE MONUMENT RR Spk

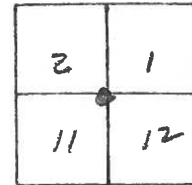
ON SURFACE - BELOW Surface

LEFT - & PAV'T. - RIGHT

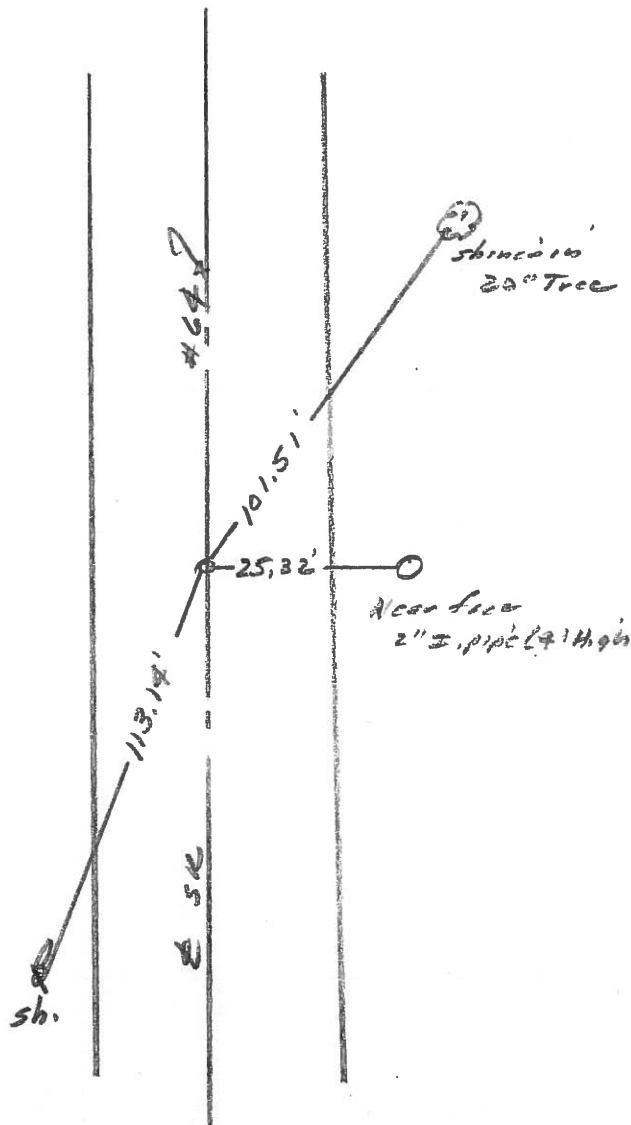
 TO EDGE PAVEMENT

S.L.M. 587+67

(11.07)



Set Sm. R. E. Spk. To Surface
7-1-86



PERSONNEL	TITLE	PERSONNEL	TITLE
Tomsic		Boyle	
Neuser			
Granata			
Vanyn			

COUNTY Fulton DATE Aug 24, 1973

S. R. 64 WEATHER _____

SEC. Amboy Twp TEMP. _____

DESCRIPTION _____ LEFT _____ CENTER LINE _____ RIGHT _____ JOB NO. _____

