

SEC. 6 FRANKLIN TWP. T. 10 S. R. 1 E.

5

CLARENCE C. & SARAH ROTH.  
FAYETTE, O.

BEGINNING OF PROJECT  
STA. 5+00.0

Sawmill

| STA.    | DESCRIPTION   | DISTANCE<br>R/L | LT. |
|---------|---------------|-----------------|-----|
| 10 + 72 | 42" Maple     | 42'             | Lt. |
| 10 + 86 | 18" Locust    | 102'            | Lt. |
| 10 + 90 | 22" Locust    | 112'            | Lt. |
| 11 + 03 | 18" Locust    | 112.3'          | Lt. |
| 11 + 17 | 20" Locust    | 97'             | Lt. |
| 11 + 43 | 48" Maple     | 66'             | Lt. |
| 11 + 50 | 5" Locust     | 50'             | Lt. |
| 11 + 64 | 20" Sycamore  | 100'            | Lt. |
| 12 + 17 | 4-10" Willows | 66'             | Lt. |
| 12 + 17 | 18" Poplar    | 66'             | Lt. |
| 12 + 24 | 18" Sycamore  | 70'             | Lt. |
| 12 + 26 | 15" Sycamore  | 70'             | Lt. |
| 12 + 41 | 18" Willow    | 59'             | Lt. |
| 12 + 65 | 18" Willow    | 42'             | Lt. |
| 12 + 85 | 12" Walnut    | 36'             | Lt. |

FULTON COUNTY  
S. H. 301 SEC. K1 (PT)  
R/W PLANS.

1  
1

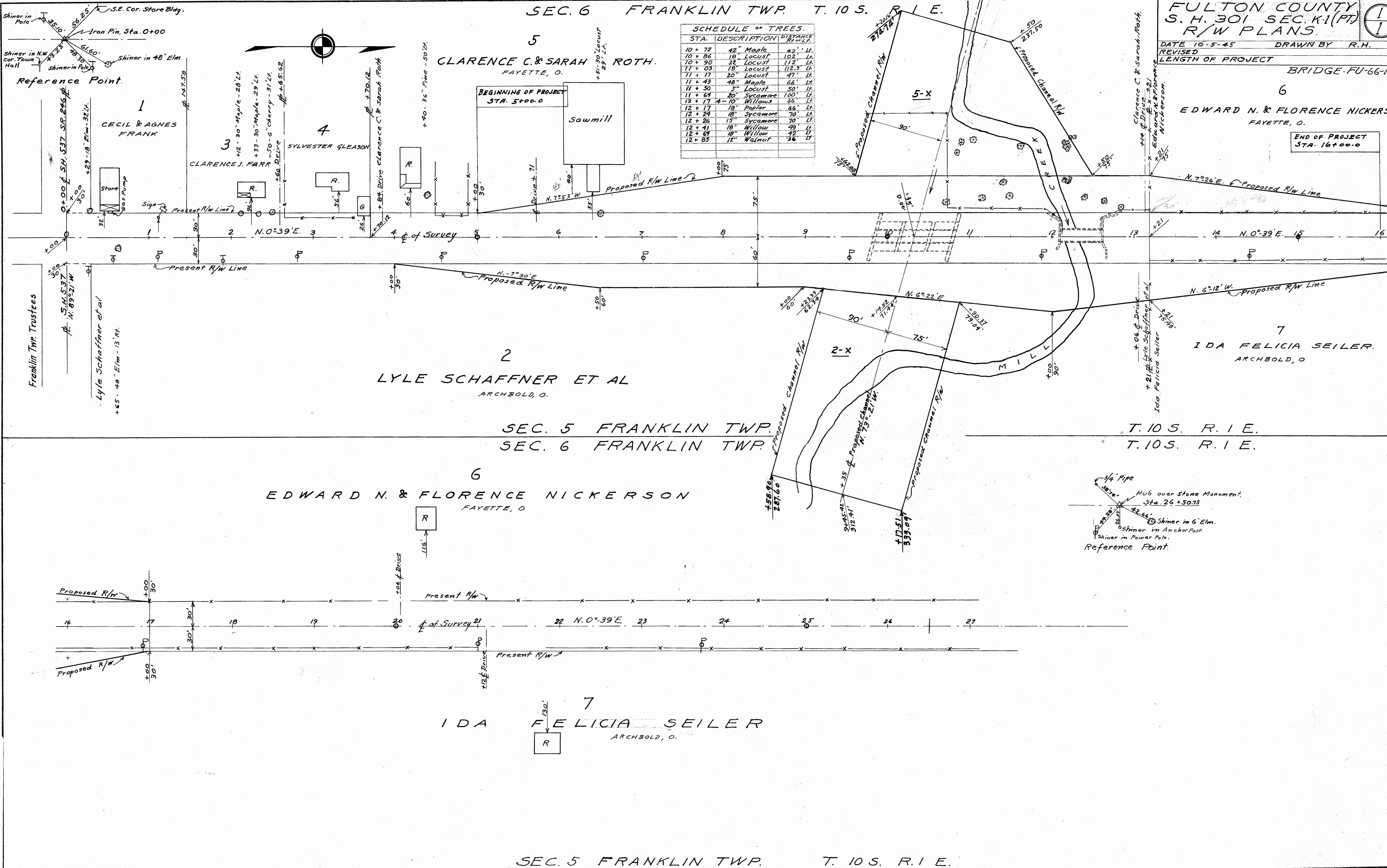
DATE 10-5-45 DRAWN BY R.H.  
REVISED  
LENGTH OF PROJECT

BRIDGE-FU-66-106

6

EDWARD N. & FLORENCE NICKERSON  
FAYETTE, O.

END OF PROJECT  
STA. 16+00.0



Scanned  
June 1997

PL 66  
#4  
A-26