

O.D.O.T. DISTRICT 2 SURVEY OFFICE (USE ONLY)

PERSONNEL _____

REFERENCE NO. 2

SHEET 2 OF 24

NOTES AUBLE

DATE 3/21/18

ROUTE SR 66

H.C. LEU

WEATHER CLOUDY, WINDY

COUNTY FULTON

R.C. AUBLE

TEMP. 32°

TOWNSHIP GERMAN

SECTION 8

DWG BY RHOADES PID 101211

T 6 N R 5 E

TYPE MONUMENT D.N.F. P.K./WASHER

ON SURFACE - ~~BELOW~~ ON _____

OFFSET Q PAVEMENT 1.7' LT : ~~RT~~

10.5' TO LT EDGE PAVEMENT

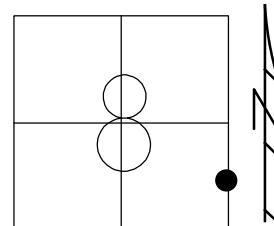
STATION: 13+33

HORZ. DATUM: -

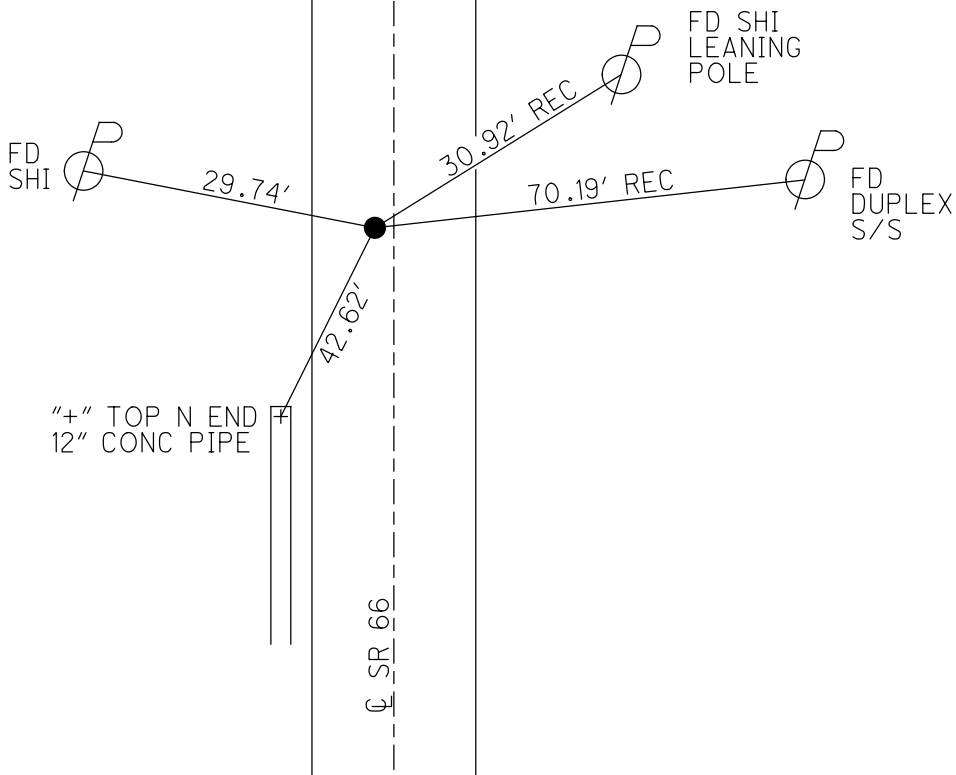
GEOID: -

GRID: NORTHING: -

EASTING: -



RECORD:
 FD P.K.NAIL
 7/8/95, CL
 SET P.K./WASHER
 8/7/96, CL
 DNF
 3-21-18, JLL



O.D.O.T. DISTRICT 2 SURVEY OFFICE

PERSONNEL _____

REFERENCE NO. 2

SHEET 2 OF 24

NOTES LOEHRKE

H.C. Rowser

R.C. CANTERBURY

DATE 7-8-95

WEATHER CLOUDY

TEMP. +80°F

ROUTE S.R. 66

COUNTY FULTON

TOWNSHIP GERMAN

SECTION 8

T. 6 N R. 5 E

TYPE MONUMENT PK NAIL

ON SURFACE - BELOW ON SURFACE

LEFT - CL PAV'T. - RIGHT 1.7"

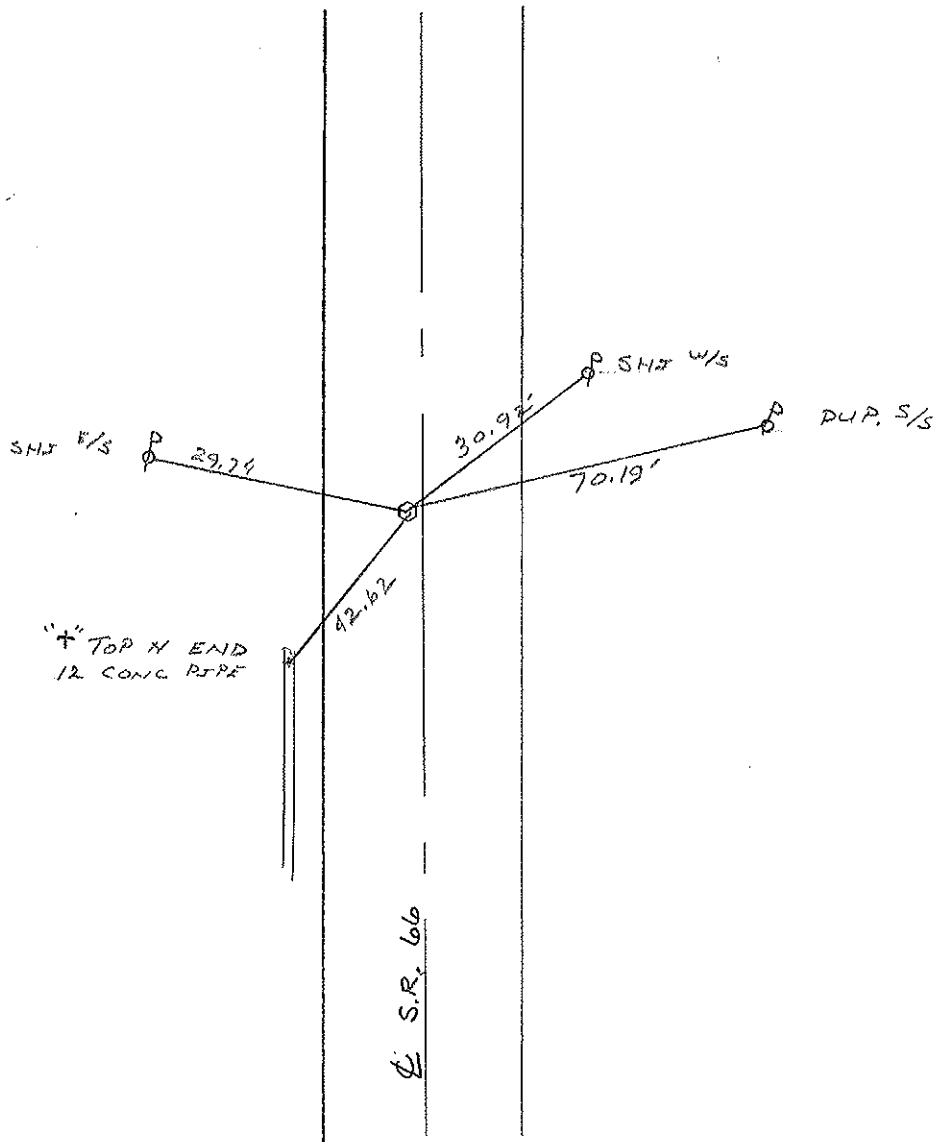
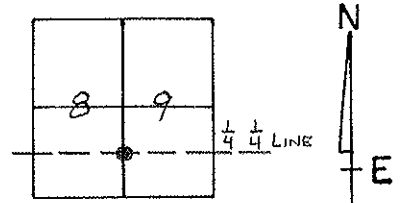
10.5 TO 47 EDGE PAVEMENT

S.L.M. 13+33

Sat P.K./WASHER

8-7-96

O.L.



County FULTON S.R. 66

Date 7-11-84

Township GERMAN

Weather Cloudy Windy

Section 8

Temp. +75

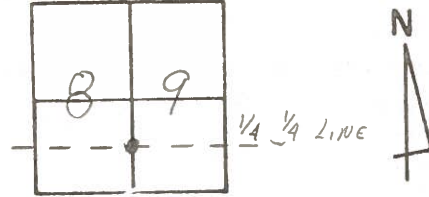
T6N, R5E

Personnel Hoffman

HOUSEHOLDER RC

BARNHISE HC

LOEHRIG ED

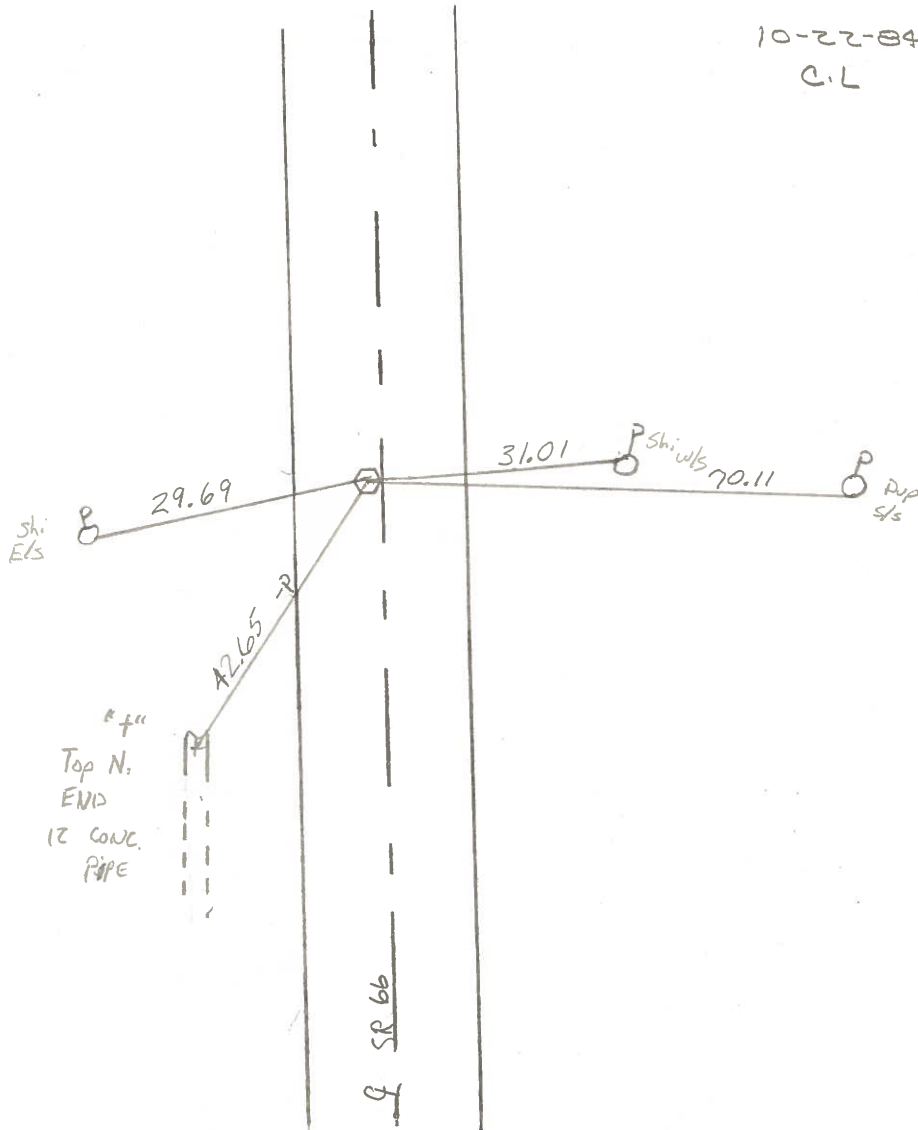


Fd; PK @ SURFACE
 2.2 LF & PAUT S.R.66
 10.0 LEP
 13.9 REP

SLM 13+33

(2)

SET PK. + WASHER
 10-22-84
 C.L



PERSONNEL TITLE PERSONNEL TITLE
 Red Beach
 W. Knape

COUNTY Fulton DATE March '75

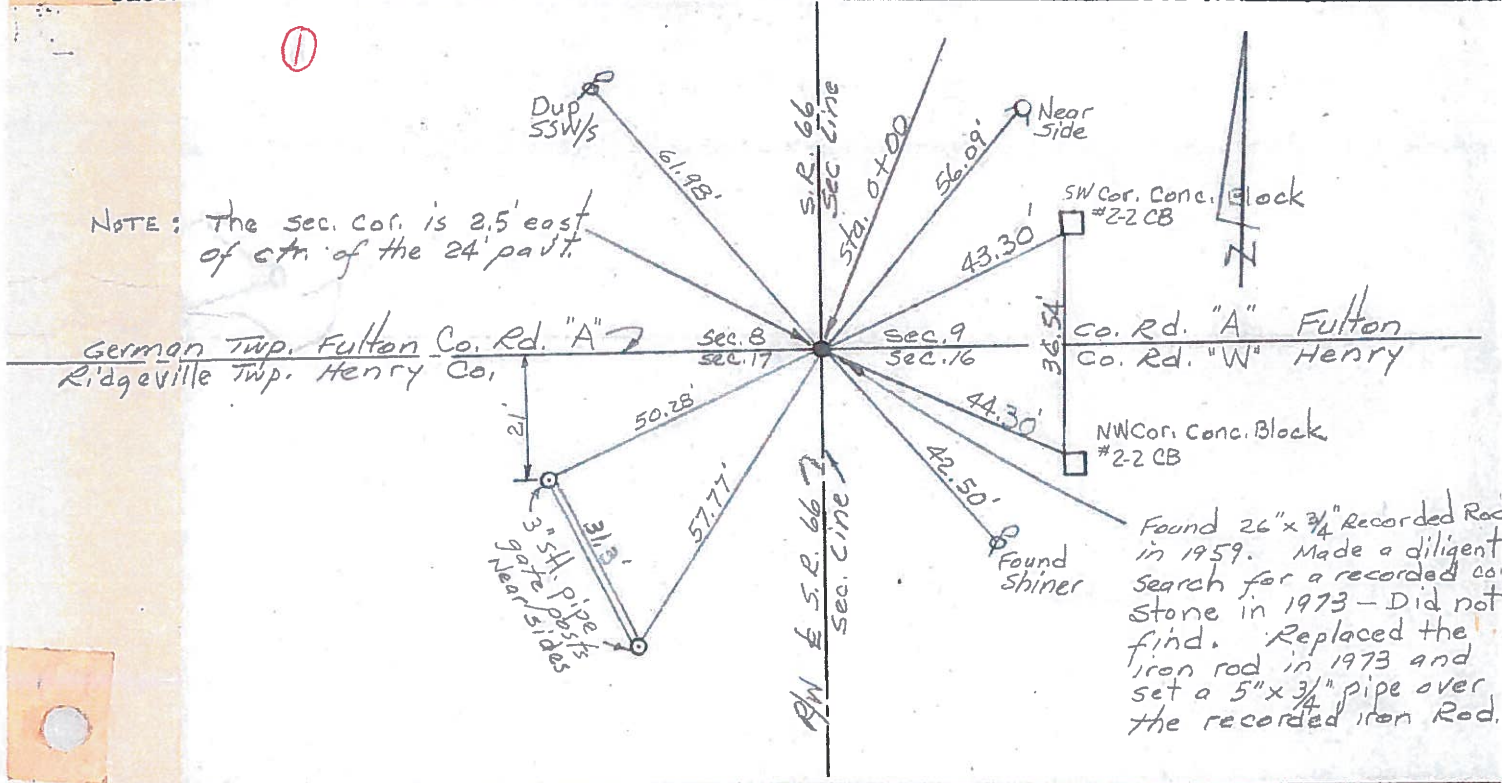
S. R. 66 WEATHER _____

SEC. German Twp. TEMP _____

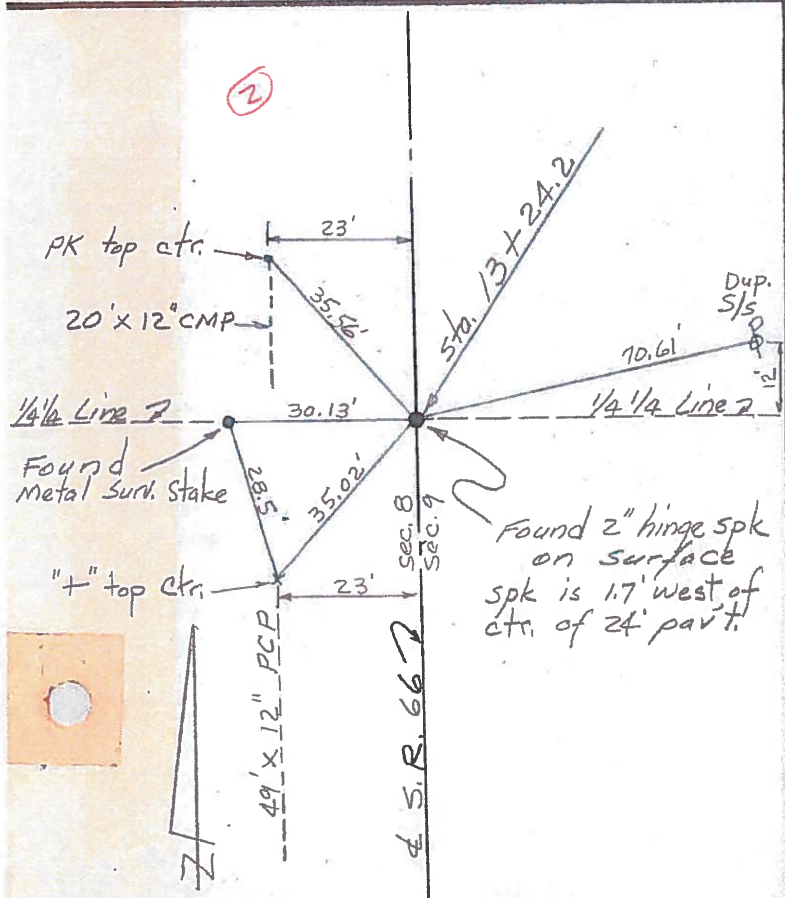
DESCRIPTION CONTROL POINTS JOB NO. _____

①

NOTE: The sec. cor. is 2.5' east of ctr. of the 24' pav't.



②



③

