

O.D.O.T. DISTRICT 2 SURVEY OFFICE (USE ONLY)

PERSONNEL _____

REFERENCE NO. 3 A

SHEET 4 OF 24

NOTES AUBLE

DATE 3-21-18

ROUTE SR 66

H.C. LEU

WEATHER WINDY, CLOUDY

COUNTY FULTON

R.C. AUBLE

TEMP. 32°

TOWNSHIP GERMAN

DWG BY RHOADES

PID 101211

SECTION 8

T 6 N R 5 E

TYPE MONUMENT MONBOX W/ 1" IPIN

ON SURFACE - ~~BELOW~~ ON _____

OFFSET C PAVEMENT ON _____ LT : RT

12.6' TO LT EDGE PAVEMENT

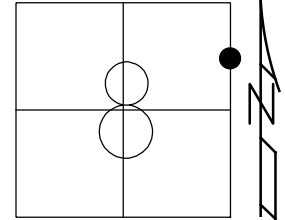
STATION: 39+70.45

HORZ.DATUM: NAD83 2011

GEOID: NAVD88 2012A

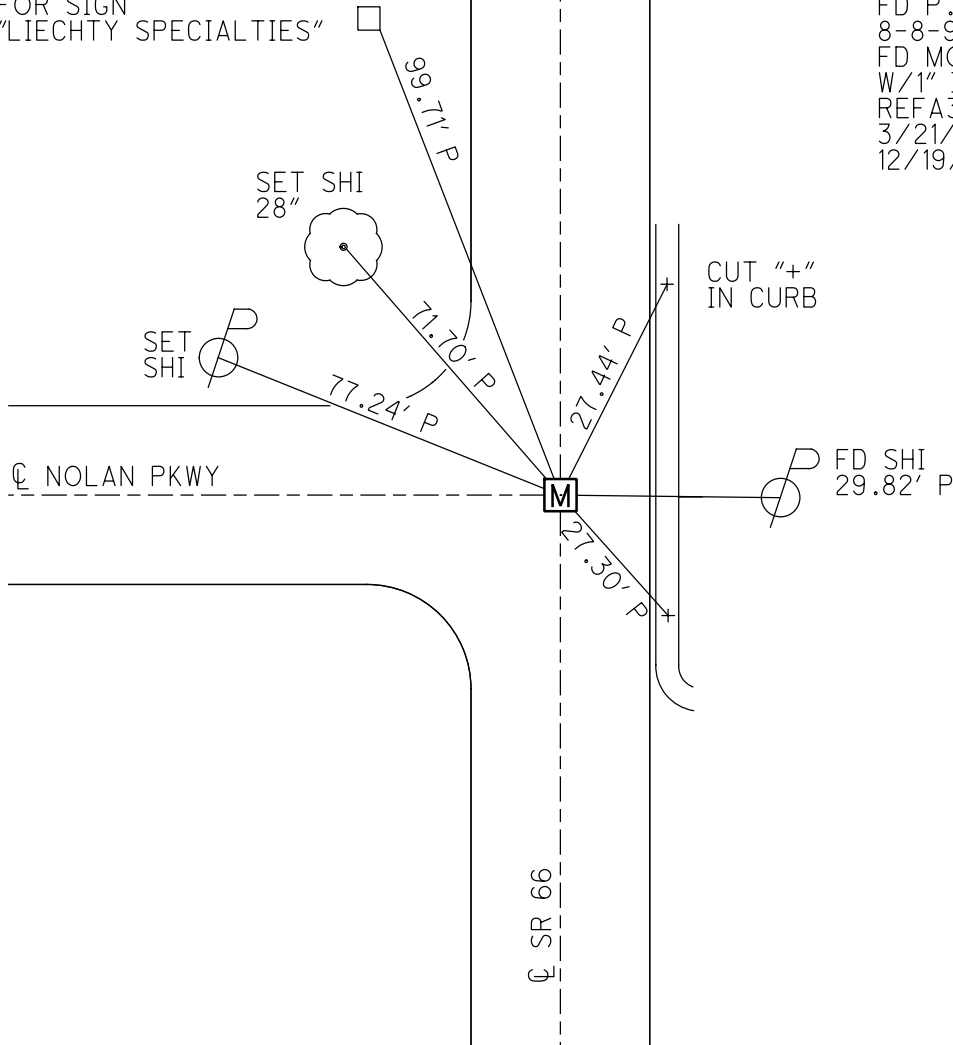
GRID: NORTHING: 671833.514

EASTING: 1473708.263



1.0' UP OLD CONC BASE
FOR SIGN
"LIECHTY SPECIALTIES"

RECORD:
FD P.K./WASHER
8-8-95, CL
FD MONBOX
W/1" IPIN
REFA3
3/21/18,
12/19/18, JLL



O.D.O.T. DISTRICT 2 SURVEY OFFICE

PERSONNEL

REFERENCE NO. 3-A

SHEET 4 OF 24

NOTES LOEHRKE

H.C. Rousos

R.C. CANTERBURY

DATE 8-8-95

WEATHER CLOUDY

TEMP. +80°F

ROUTE S.R. 66

COUNTY FULTON

TOWNSHIP GERMAN

SECTION 8

T6 N R 5 E

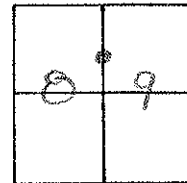
TYPE MONUMENT PK NAIL / WASHER

ON SURFACE - BELOW ON SURFACE

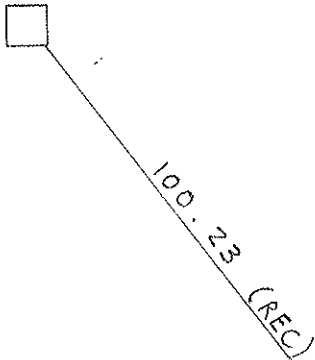
LEFT - ☉ PAV'T. - RIGHT ON ☉

12.6 TO LT EDGE PAVEMENT

S.L.M. 39+69



1.0' UP CONC SIGN
BASE "LIECHTY SPECIALTIES"



SET TACK SE/S
16" MAPLE

72.52'

☉ PAV'T S.R. 66

FD. DUP. SW/S

29.67'

SET SHL. E/S

29.62

38.56'

SET NAIL/SHINER IN
ASPHALT WALK

CONC. DRIVE TO
CAR DEALERSHIP.

County FULTON S.R. 66

Date 7-11-84

Township GERMAN

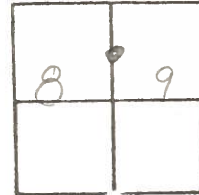
Weather CLOUDY, WINDY

Section 8

Temp. +75

T6N, R5E

Personnel Hoffman



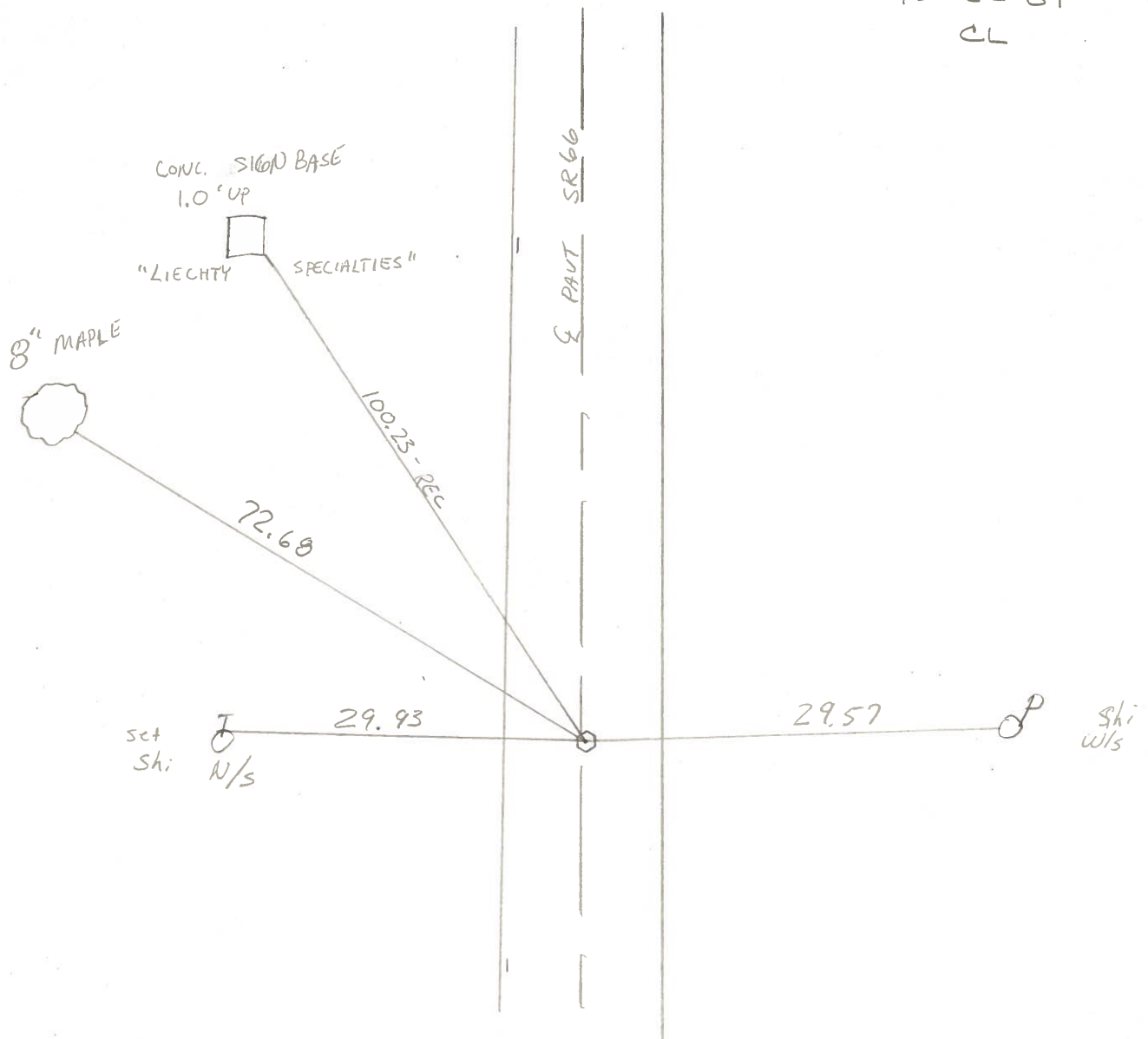
3 A

HOUSEHOLDER	RC
BARNEY	HC
LOGHRKE	IV

Fd PK 1" Below SURFACE -
 0.3 R to LG PAUT
 11.5 REP
 12.5 LEP

39+71

SET PK. + WASHER
 10-22-84
 CL



PERSONNEL	TITLE	PERSONNEL	TITLE	COUNTY	DATE	WEATHER	TEMP.
Tomsic				Fulton	MAY 1, 1973		
Nasser				S. R. 66			
Granata				SEC.			
Vanyo							

DESCRIPTION _____ LEFT _____ CENTER LINE _____ RIGHT _____ JOB NO. _____

