

O.D.O.T. DISTRICT 2 SURVEY OFFICE (USE ONLY)

PERSONNEL _____

REFERENCE NO. 3 AA

SHEET 5 OF 24

NOTES AUBLE

DATE 3/21/18

ROUTE SR 66

H.C. LEU

WEATHER CLOUDY

COUNTY FULTON

R.C. AUBLE

TEMP. 37°

TOWNSHIP GERMAN

SECTION 8

DWG BY RHOADES PID 101211

T 6 N R 5 E

TYPE MONUMENT D.N.F. P.K. SHANK

~~ON SURFACE~~ - BELOW 1 1/2"

OFFSET \odot PAVEMENT ON LT : RT

12.6' TO LT EDGE PAVEMENT

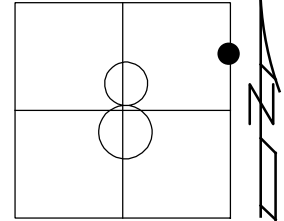
STATION: 39+71.45

HORIZ. DATUM: -

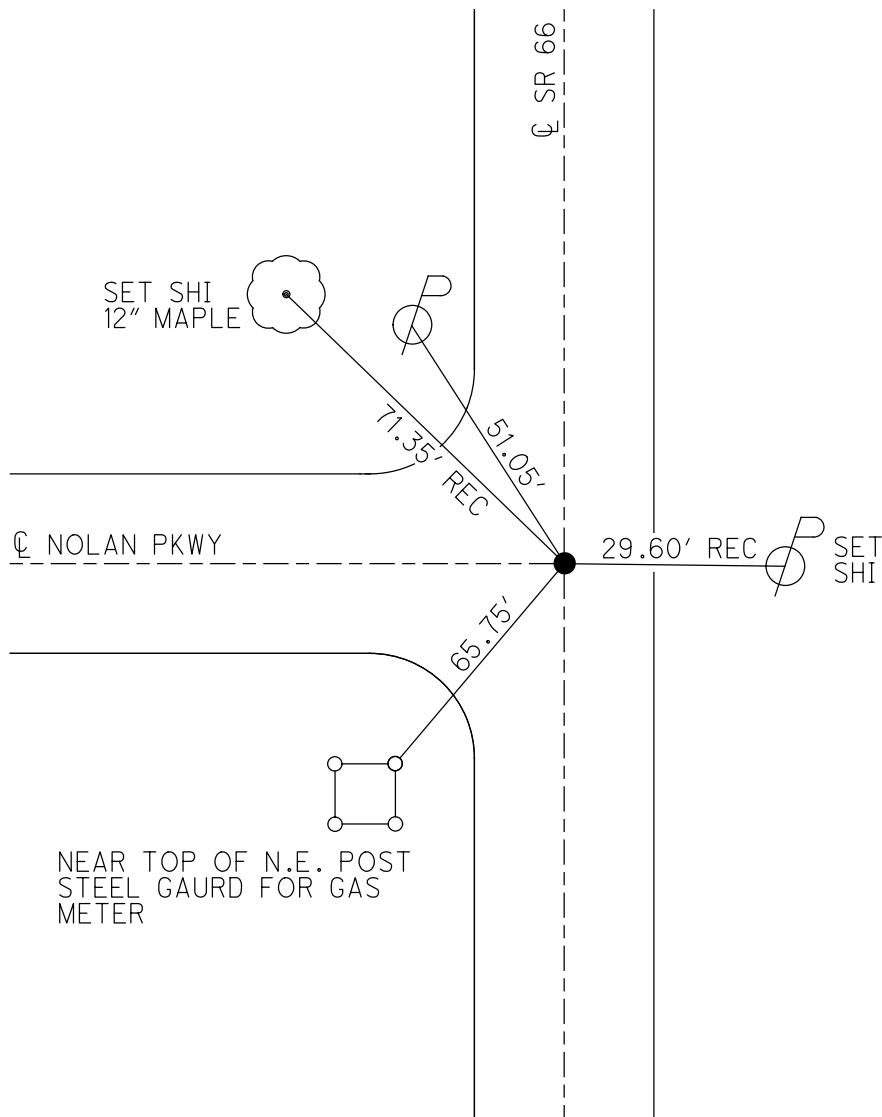
GEOID: -

GRID: NORTHING: -

EASTING: -



RECORD:
SET P.K. SHANK
11/1/96, CL
DNF
3-21-18, JLL



O.D.O.T. DISTRICT 2 SURVEY OFFICE

PERSONNEL _____

REFERENCE NO. 3-AA SHEET _____ OF _____

NOTES LOEHRKE

H.C. DAUSAS

R.C. CANTERBURY

DATE 11-1-96

WEATHER WINDY. Cold

TEMP. 136

ROUTE S.R. 66

COUNTY FULTON

TOWNSHIP GERMAN

SECTION 8

T E N R S E

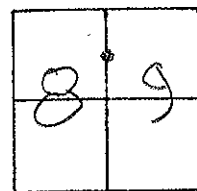
TYPE MONUMENT P.K. SHANK

ON SURFACE - BELOW 1 1/2"

LEFT - C PAV'T. - RIGHT Yes

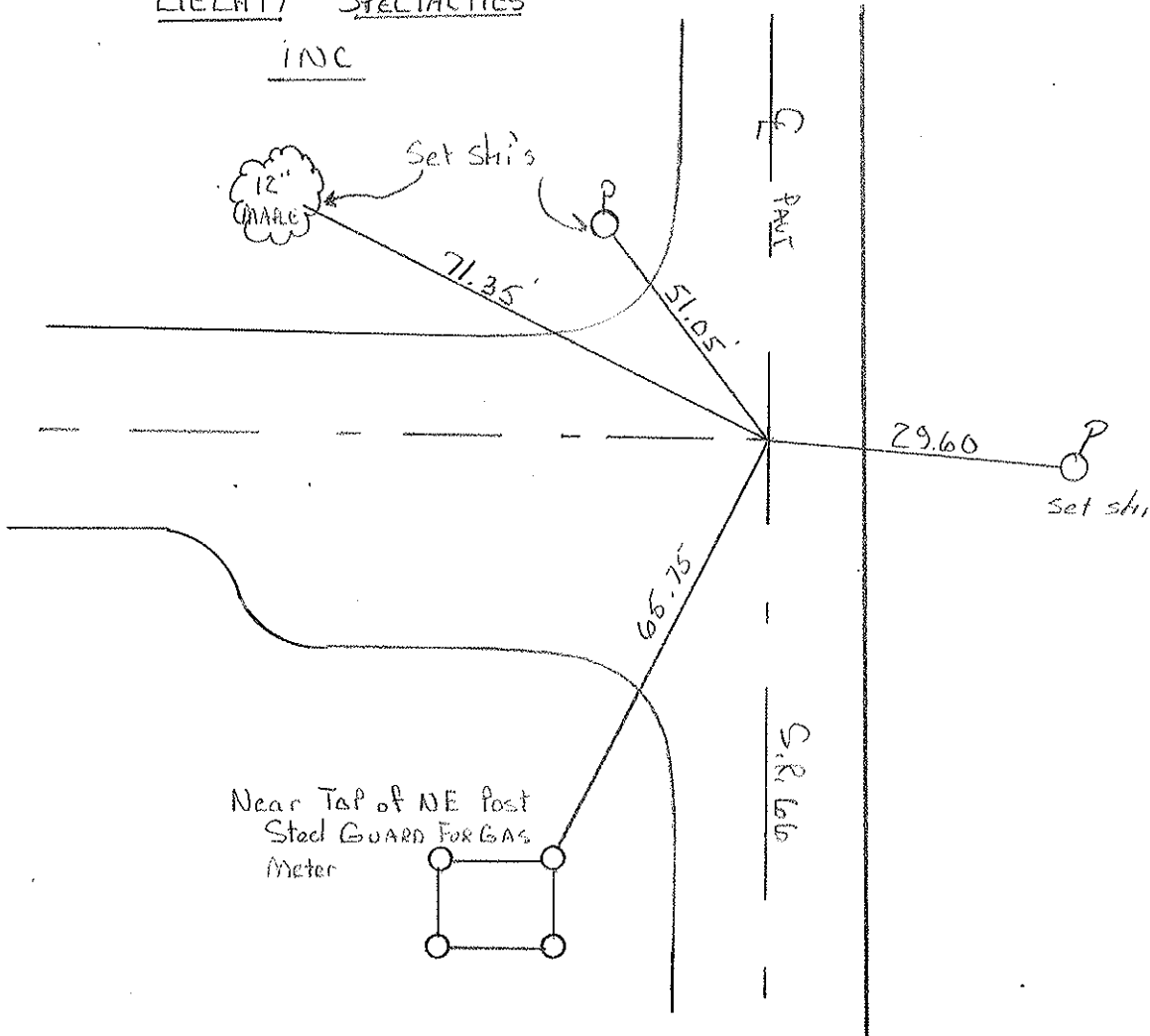
126 TO Lt EDGE PAVEMENT

S.L.M. 39470 - 1996 Resurf. Sta.



Note. Pt is 1/4 1/4 Post

LIECHTY SPECIALTIES
INC



Near Top of NE Post
Steel Guard For Gas
Meter

