

O.D.O.T. DISTRICT 2 SURVEY OFFICE (USE ONLY)

PERSONNEL

REFERENCE NO. 3 B

SHEET 6 OF 24

NOTES AUBLE

DATE 3-21-18

ROUTE SR 66

H.C. LEU

WEATHER CLOUDY

COUNTY FULTON

R.C. AUBLE

TEMP. 37°

TOWNSHIP GERMAN

SECTION 8

DWG BY RHOADES PID 101211

T 6 N R 5 E

TYPE MONUMENT MONBOX W/ 1" IPIN

ON SURFACE - ~~BELOW~~ ON

OFFSET Q PAVEMENT 2.0' LT : ~~RT~~

10.7' TO LT EDGE PAVEMENT

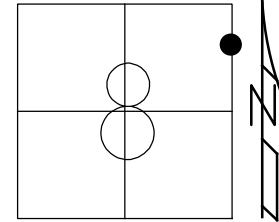
STATION: 41+24.44

HORZ. DATUM: NAD83 2011

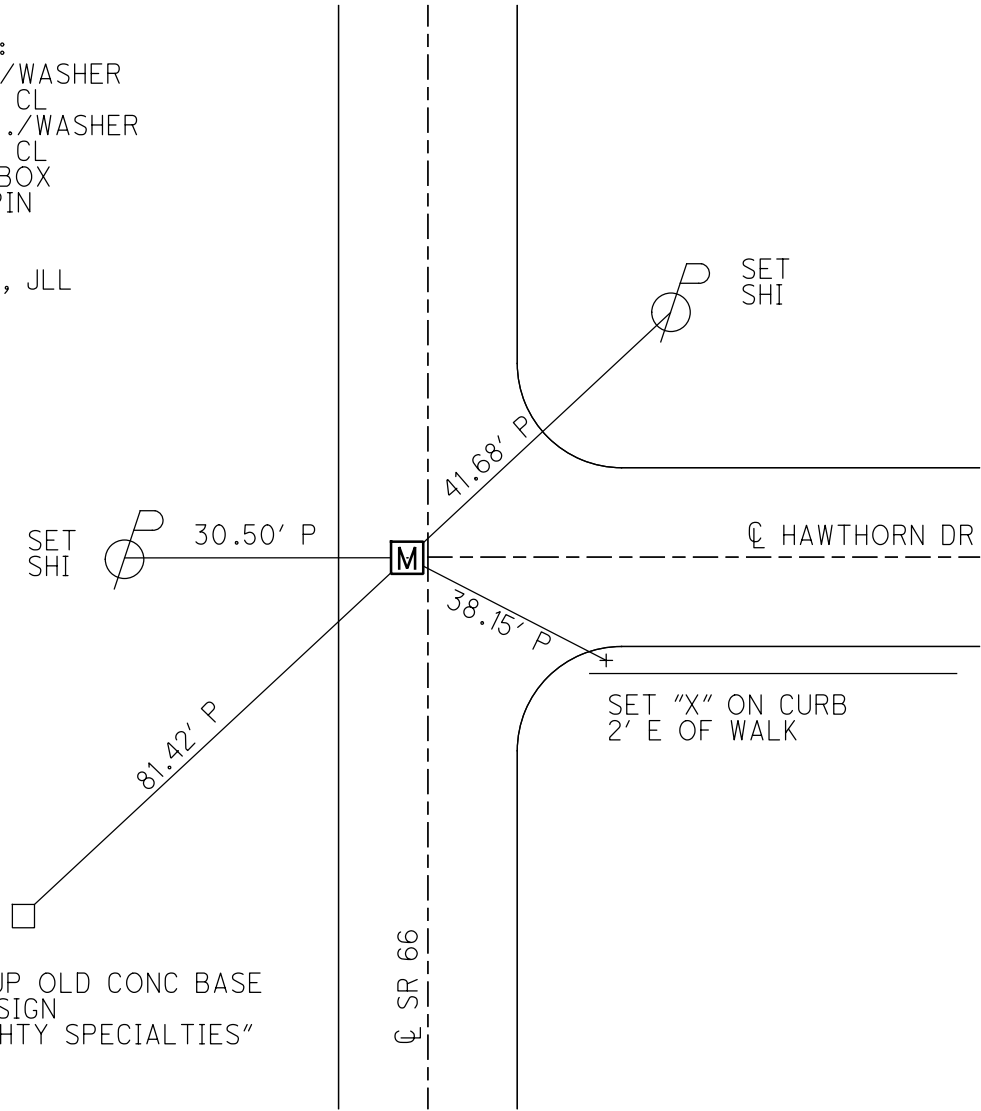
GEOID: NAVD88 2012A

GRID: NORTHING: 671987.491

EASTING: 1473708.764



RECORD:  
 FD P.K./WASHER  
 8-8-95, CL  
 SET P.K./WASHER  
 8-7-96, CL  
 FD MONBOX  
 W/ 1" IPIN  
 REFB3  
 3-21-18  
 12-19-18, JLL



# O.D.O.T. DISTRICT 2 SURVEY OFFICE

PERSONNEL

REFERENCE NO. 3-B

SHEET 5 OF 24

NOTES LOEHRKE

H.C. Rousos

R.C. CANTERBURY

DATE 8-8-95

WEATHER CLOUDY

TEMP. +80°F

ROUTE S.R. 66

COUNTY FULTON

TOWNSHIP GERMAN

SECTION 8

T. 6 N R. 5 E

Reset 8-7-96

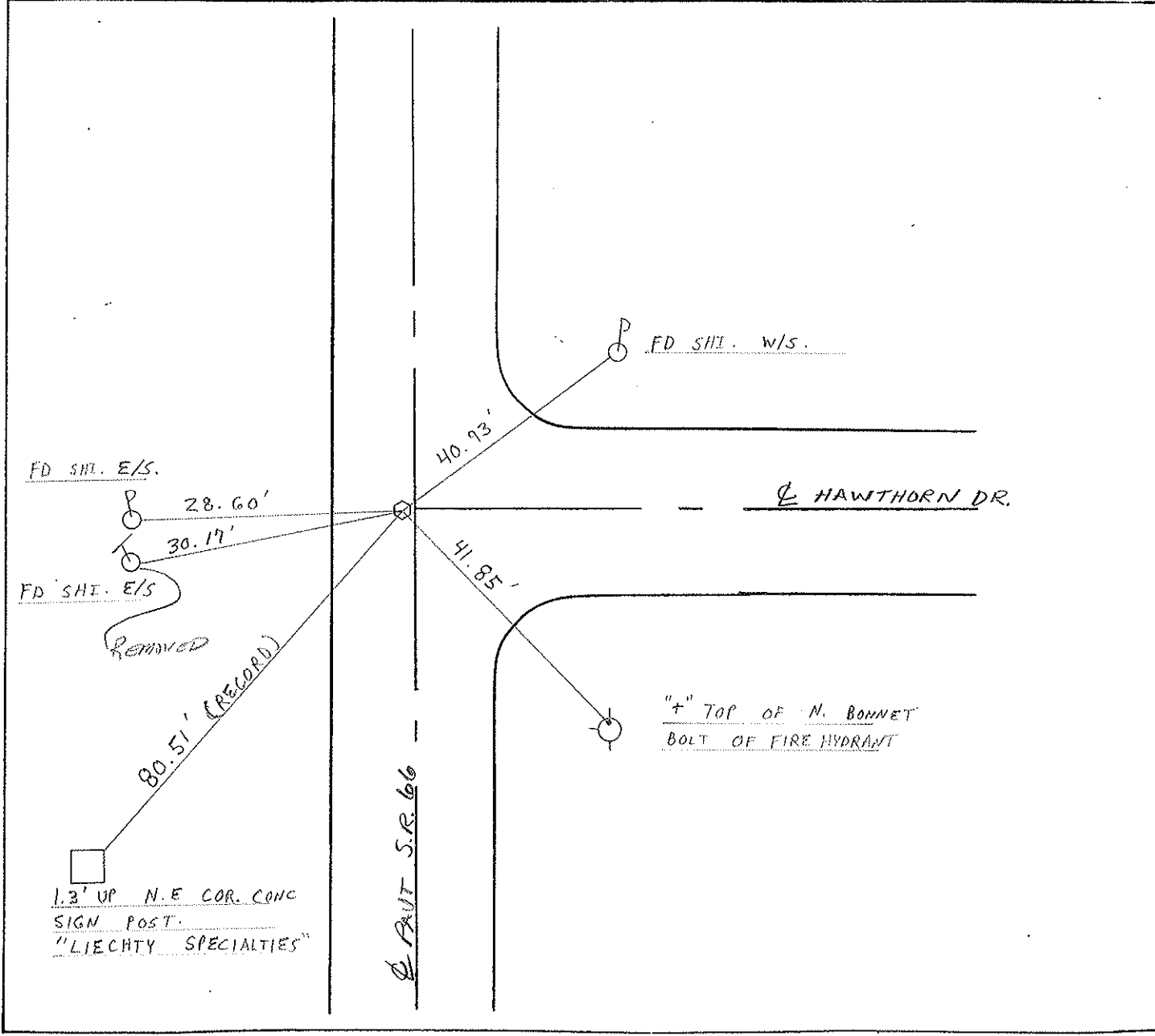
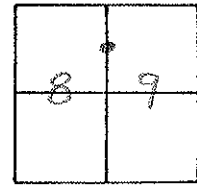
TYPE MONUMENT PK NAIL/WASHER

ON SURFACE - BELOW ~~ON SURFACE~~

LEFT - CL PAV'T. - RIGHT 2.0' LT CL PAVT

10.7 TO LT EDGE PAVEMENT

S.L.M. 41 + 22



County FULTON S.R. 66

Township GERMAN

Section B

T6N, R5E

Personnel Hoffman

HOUSEHOLDER RC

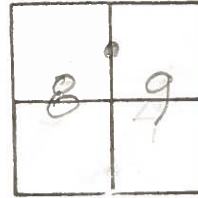
BARNIEY HC

LOEHMKE IT

Date 7-11-84

Weather CLOUDY, WINDY

Temp. +74



# 3-B

SLM 41+25

Fd: PK 1 1/2" Below SURFACE

2.0 Lt of & SR 66

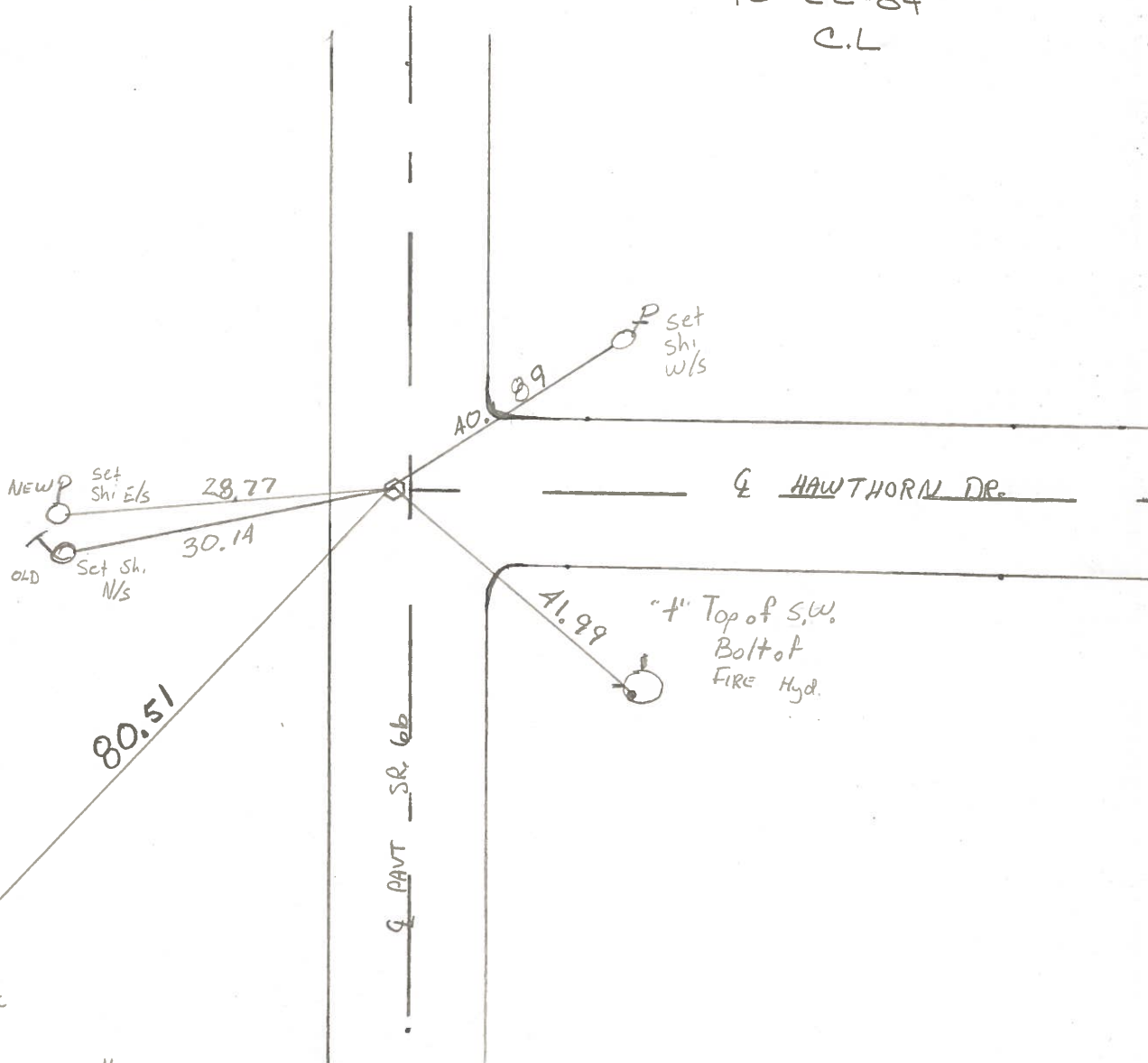
13.2 to REP

ON & of HAWTHORN Dr.

SET PK+WASHER

10-22-84

C.L



Note  
1.3' up

M/E COR. CONC  
SIGN Post

"LIECHTY SPECIALTIES"