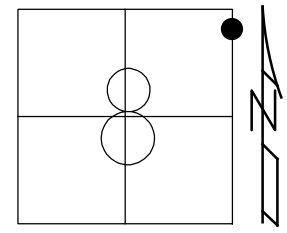


O.D.O.T. DISTRICT 2 SURVEY OFFICE (USE ONLY)

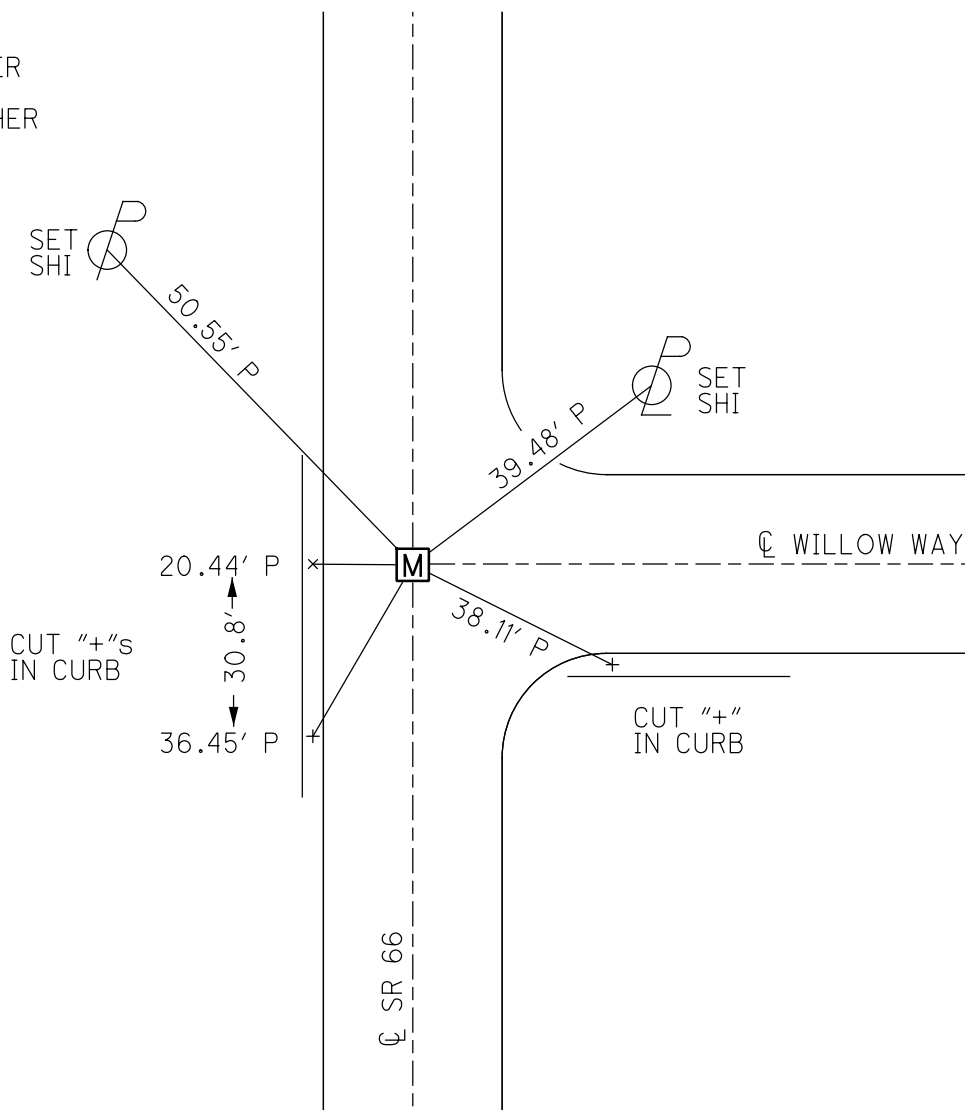
PERSONNEL \_\_\_\_\_ REFERENCE NO. 3 C SHEET 7 OF 24  
 NOTES AUBLE DATE 3-21-18 ROUTE SR 66  
 H.C. LEU WEATHER CLOUDY COUNTY FULTON  
 R.C. AUBLE TEMP. 37° TOWNSHIP GERMAN  
 DWG BY RHOADES PID 101211 SECTION 8  
 T 6 N R 5 E

TYPE MONUMENT MONBOX W/ 1" IPIN  
 ON SURFACE - ~~BELOW~~ ON  
 OFFSET  $\odot$  PAVEMENT ON LT : RT  
11.3' TO LT EDGE PAVEMENT  
 STATION: 46+40.02



HORZ. DATUM: NAD83 2011 GEOID: NAVD88 2012A  
 GRID: NORTHING: 672503.044 EASTING: 1473710.659

RECORD:  
 FD P.K./WASHER  
 8-8-95, CL  
 SET P.K./WASHER  
 8-7-96, CL  
 FD MONBOW  
 W/1" IPIN  
 REFC3  
 3/21/18,  
 12/19/18, JLL



# O.D.O.T. DISTRICT 2 SURVEY OFFICE

PERSONNEL \_\_\_\_\_

REFERENCE NO. 3-C

SHEET 6 OF 24

NOTES Loehrke

H.C. ROU-05

DATE 8-8-95

ROUTE S.R. 66

R.C. CANTERBURY

WEATHER Cloudy

COUNTY FULTON

TEMP. +80

TOWNSHIP GERMAN

SECTION 8

T. 6 N. R. 5 E.

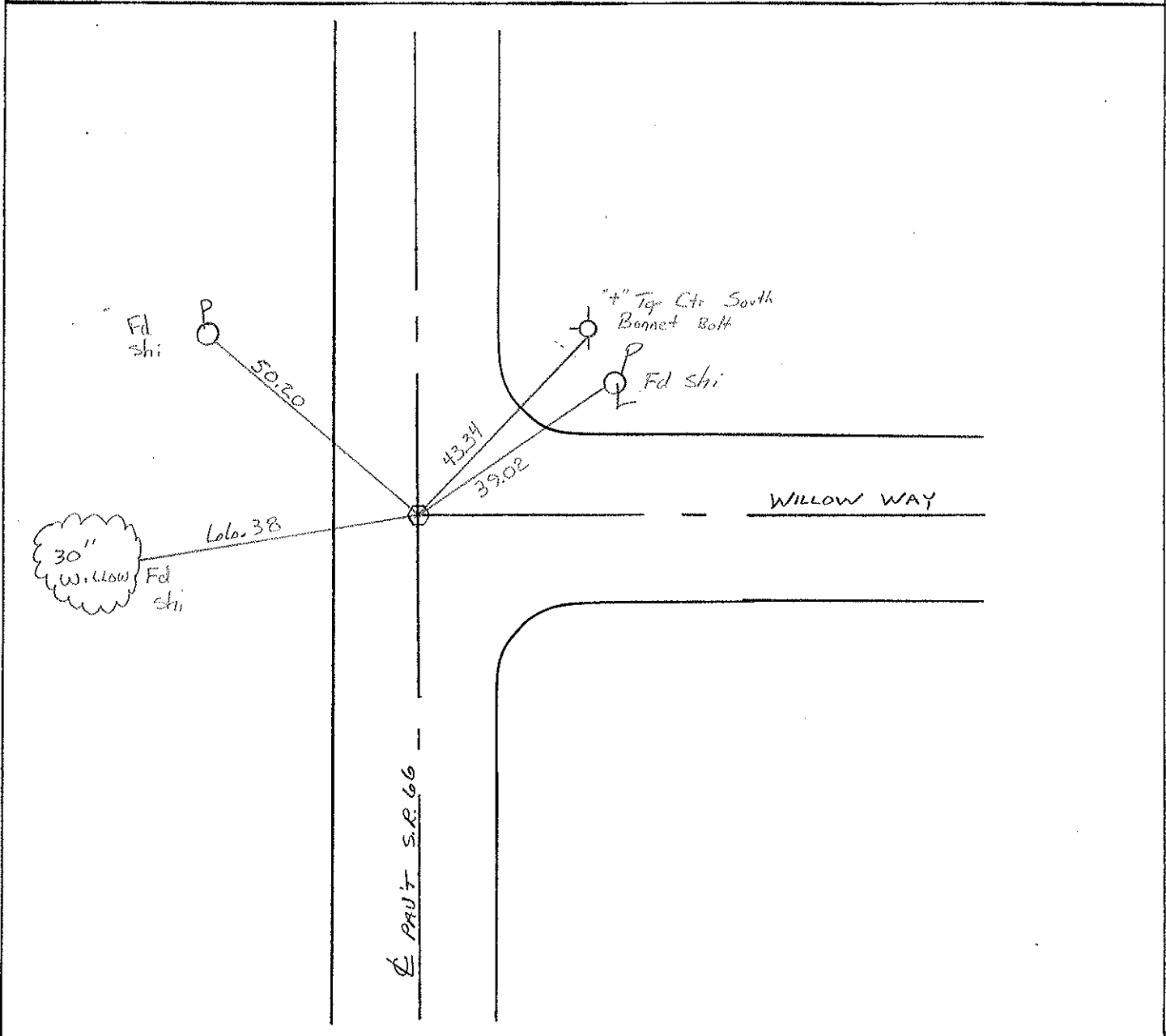
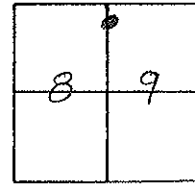
TYPE MONUMENT P.K. WASHER <sup>Reset</sup> 8-7-96

ON SURFACE - BELOW Yes

LEFT - & PAV'T. - RIGHT Yes

13 TO Lt EDGE PAVEMENT

S.L.M. 46+40



County FULTON S.R. 66

Date 7-11-84

Township GERMAN

Weather CLOUDY, WINDY

Section 8

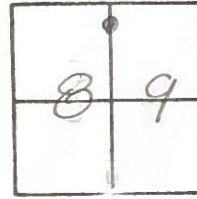
Temp. +72

T6N, R5E

Personnel Hoffman

# 3-C

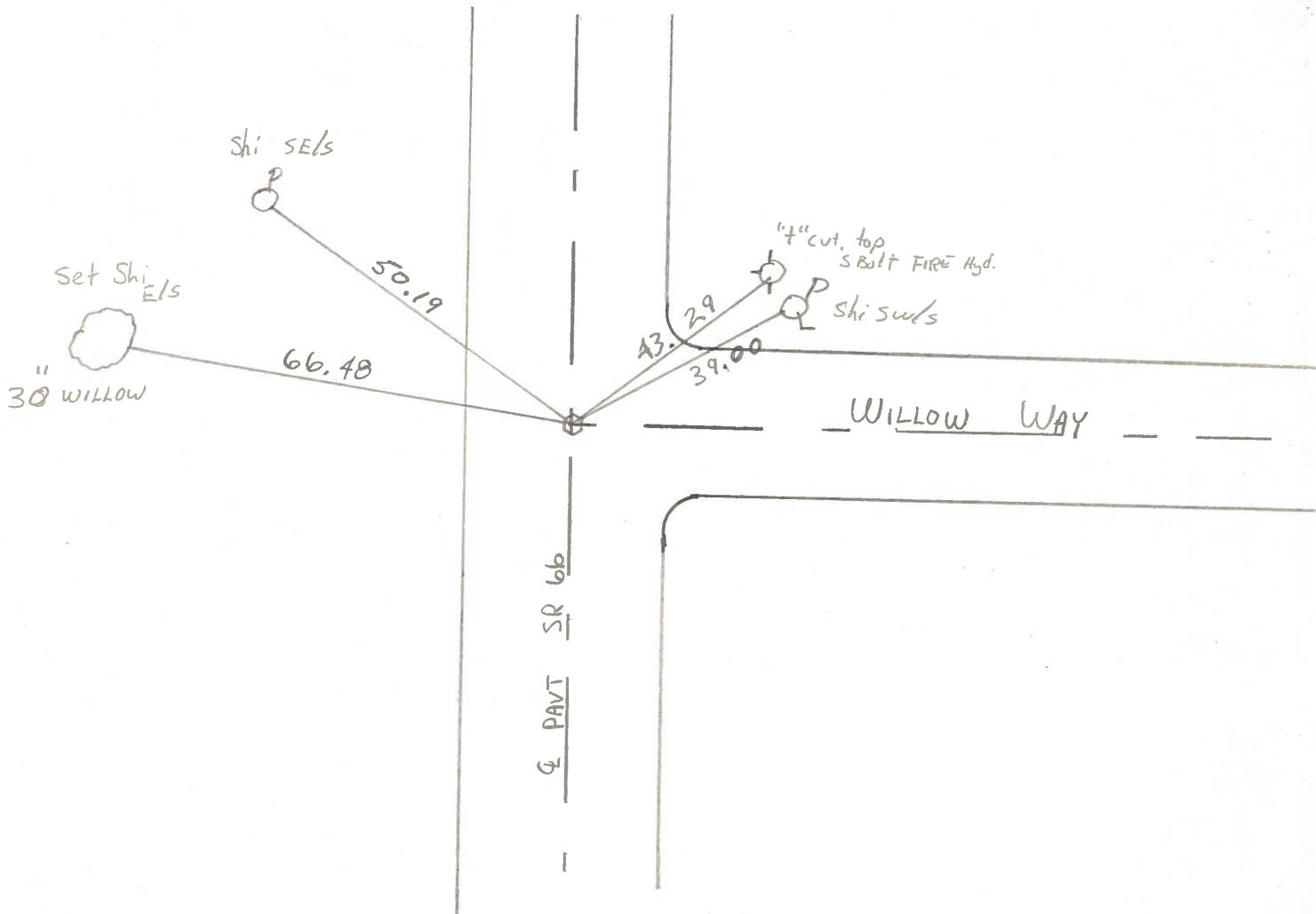
<u>HOUSE HOLDER</u>	<u>PC</u>
<u>BARNLEY</u>	<u>HC</u>
<u>LOHRKE</u>	<u>PT</u>



Fd PK 1" Below SURFACE  
ON E of Both Roads  
11.7 to LEP. SR66

SLM 46+41

SET PK + WASHER  
10-22-84  
C.L.





PERSONNEL	TITLE	PERSONNEL	TITLE
Beach			
Knape			
Gunter			

COUNTY Fulton DATE 14 Oct. 59  
 S. R. 66 WEATHER 10-1-60  
 SEC. Henry-Fulton North TEMP \_\_\_\_\_

DESCRIPTION CONTROL POINTS JOB NO. \_\_\_\_\_

