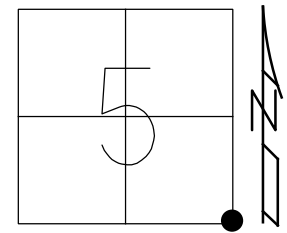


O.D.O.T. DISTRICT 2 SURVEY OFFICE (USE ONLY)

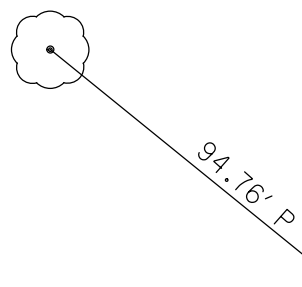
PERSONNEL _____ REFERENCE NO. 4 SHEET 8 OF 24
 NOTES AUBLE DATE 3-21-18 ROUTE SR 66
 H.C. LEU WEATHER CLOUDY, WINDY COUNTY FULTON
 R.C. AUBLE TEMP. 37° TOWNSHIP GERMAN
 DWG BY RHOADES PID 101211 SECTION 5
 T 6 N R 5 E

TYPE MONUMENT MONBOX W/CMON
 ON SURFACE - ~~BELOW~~ ON
 OFFSET C PAVEMENT 1.7' LT : ~~RT~~
- TO - EDGE PAVEMENT
 STATION: 52+95.59

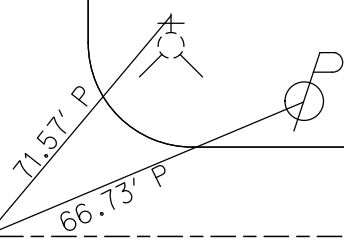


HORZ.DATUM: NAD83 2011 GEOID: NAVD88 2012A
 GRID: NORTHING: 673158.564 EASTING: 1473712.917

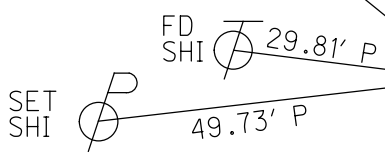
FD SHI
27" MAPLE



FD "+"
S/BOLT
BONNET
HYDRANT

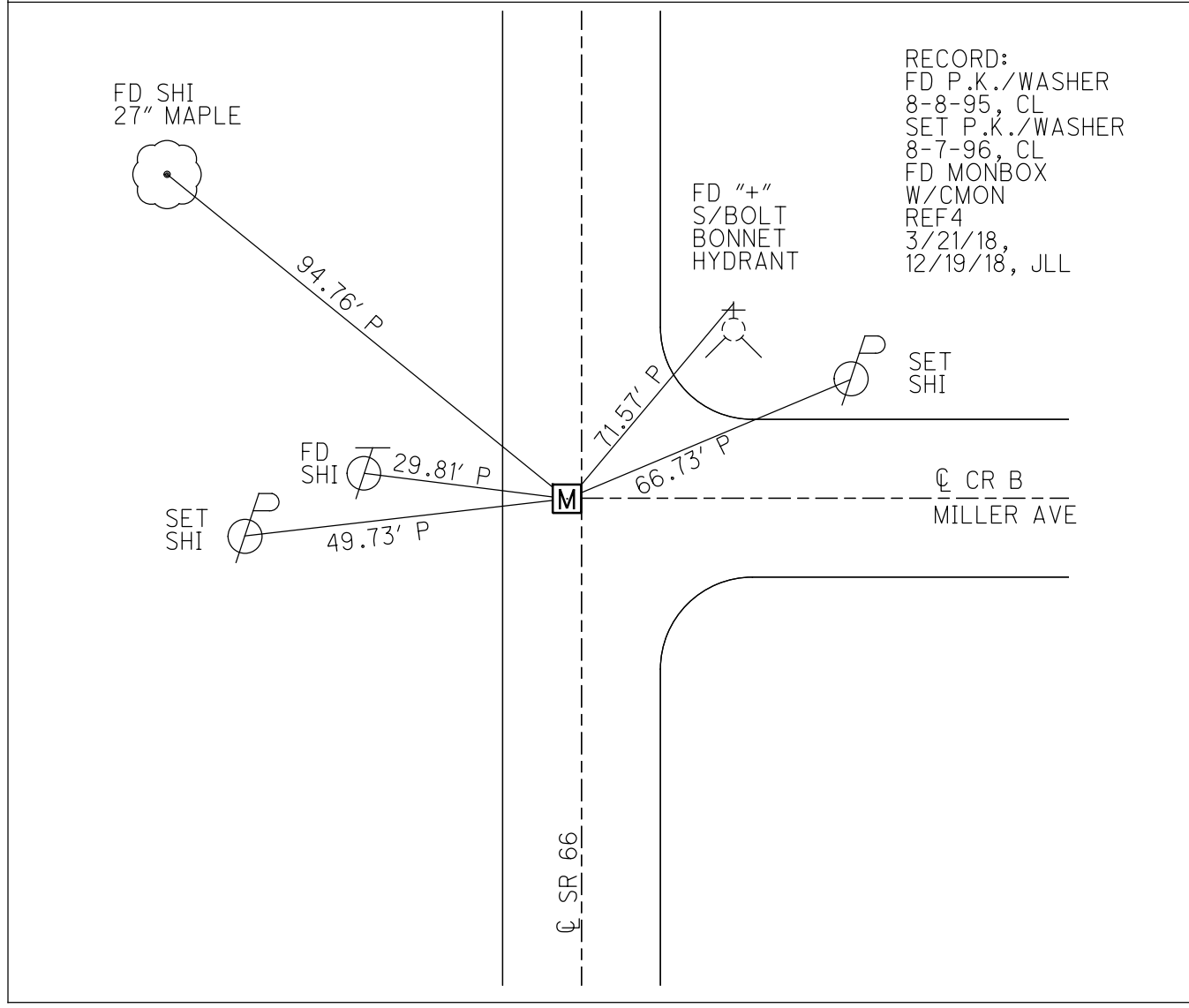


RECORD:
 FD P.K./WASHER
 8-8-95, CL
 SET P.K./WASHER
 8-7-96, CL
 FD MONBOX
 W/CMON
 REF4
 3/21/18,
 12/19/18, JLL



C CR B
MILLER AVE

C SR 66



O.D.O.T. DISTRICT 2 SURVEY OFFICE

PERSONNEL _____

REFERENCE NO. 4

SHEET 7 OF 24

NOTES LOEHRE

H.C. ROUSS

DATE 8-8-95

ROUTE S.R. 66

R.C. CANTERBURY

WEATHER Cloudy

COUNTY FULTON

TEMP. 780

TOWNSHIP GERMAN

SECTION 5

T. 6 N. R. 5 E.

TYPE MONUMENT P.R. / WASHER Reset

8-7-96 C.L.

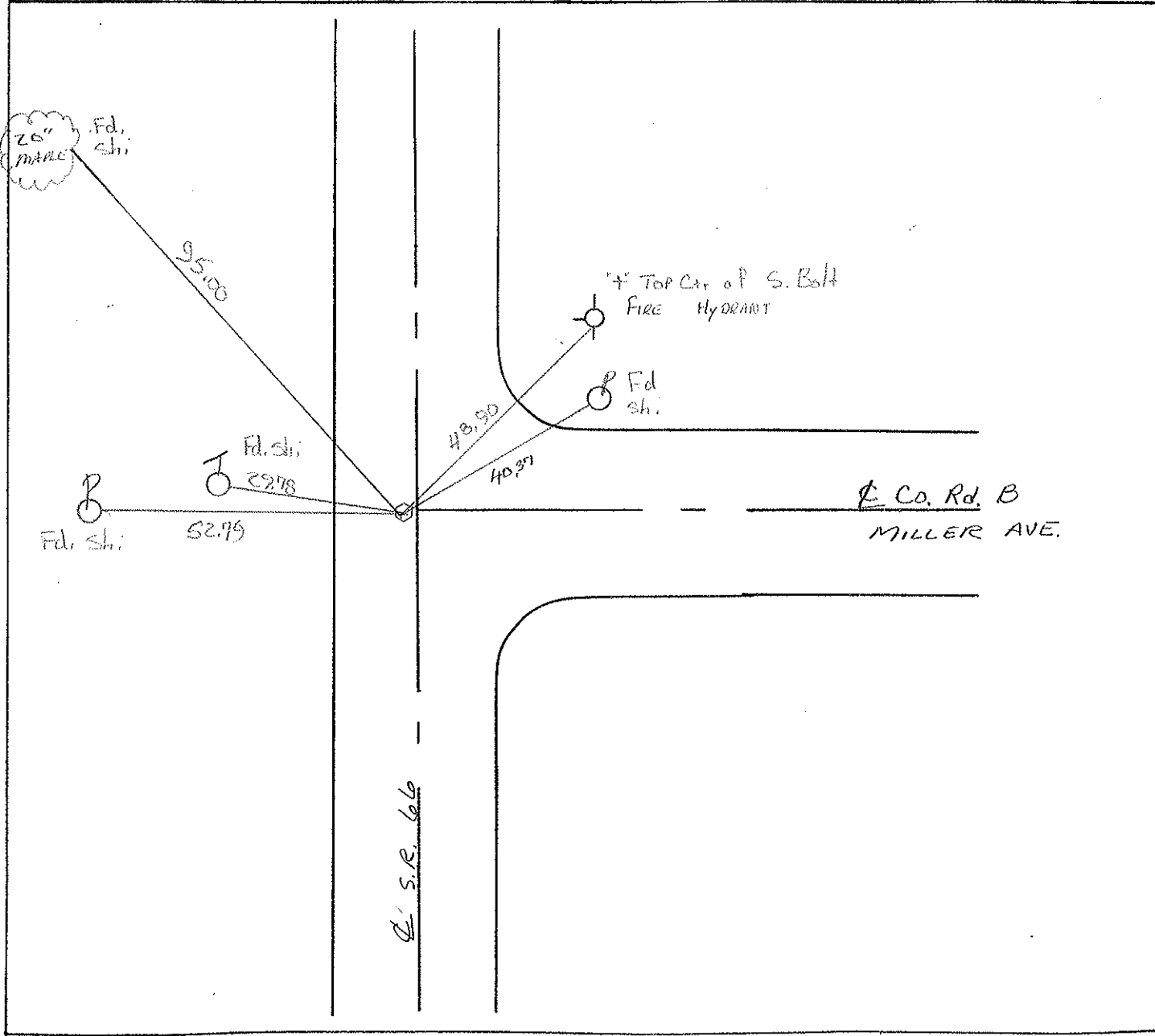
ON SURFACE - BELOW yes

LEFT - CL PAV'T. - RIGHT 1.7' Lt

- TO - EDGE PAVEMENT

S.L.M. 52+96

5	4
8	9



County FULTON S.R. 66

Date 7-11-84

Township GERMAN

Weather CLOUDY, WINDY

Section 5

Temp. + 77

T6N, R5E

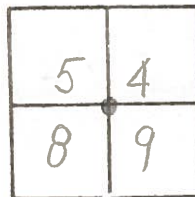
Personnel Hoffman

4

HOUSEHOLDER RC

BARNEY HC

LOHRKE

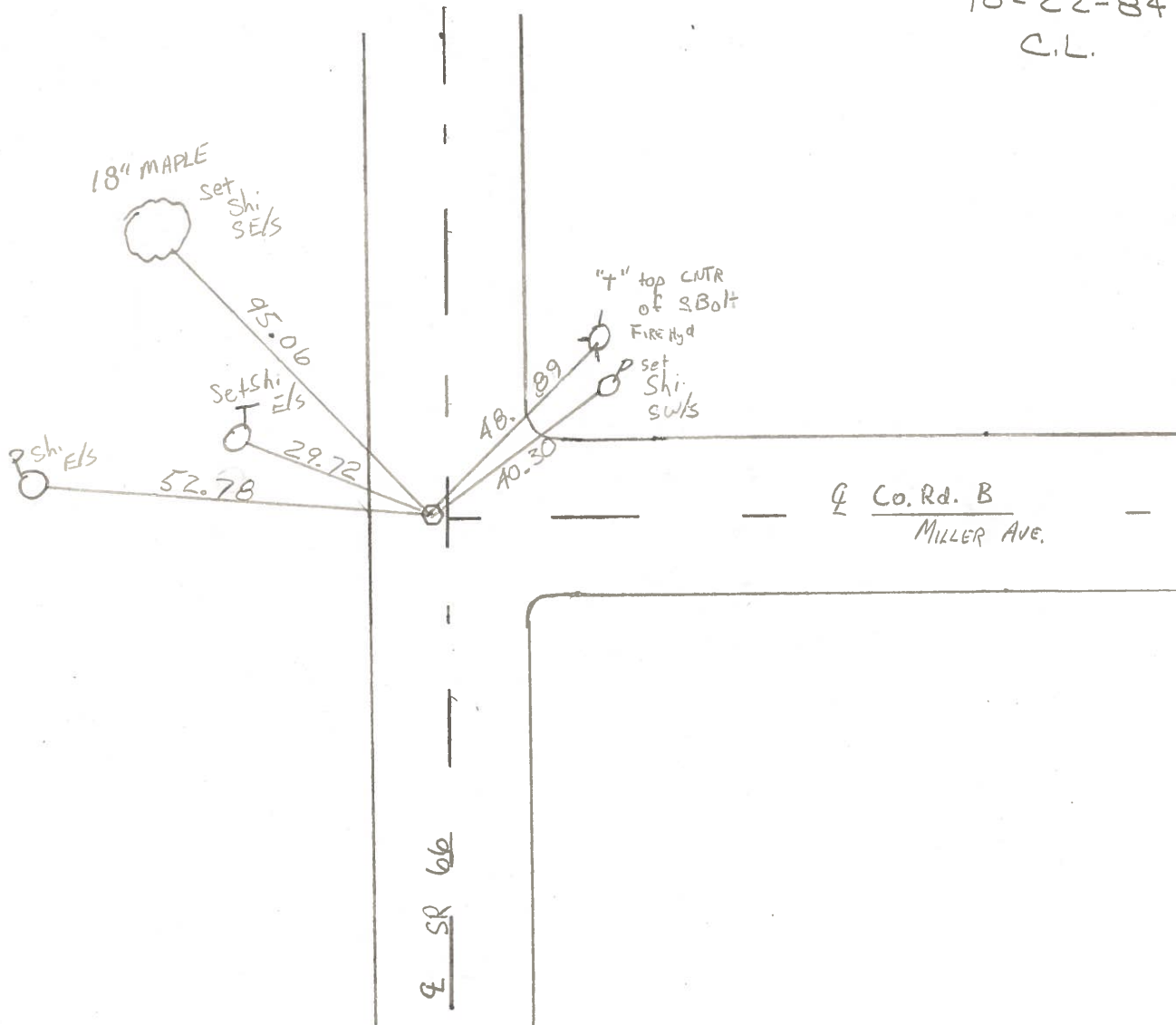


Fd: PK 1/2" Below SURFACE
 ON & PAUT Co. Rd "B"
 1.7' Lf of & PAUT S.R. 66

SLM 52+97

SET PK + WASHER

10-22-84
C.L.



PERSONNEL TITLE PERSONNEL TITLE

Red Beach
W. Krape

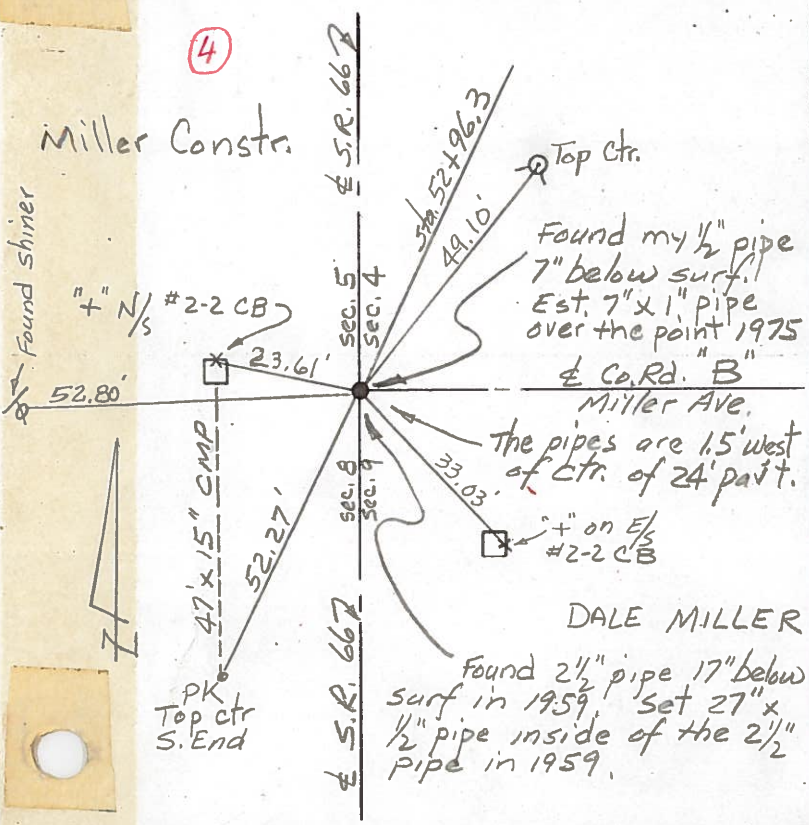
COUNTY FULTON DATE March 75

S. R. 66 WEATHER South ARCHBOLD

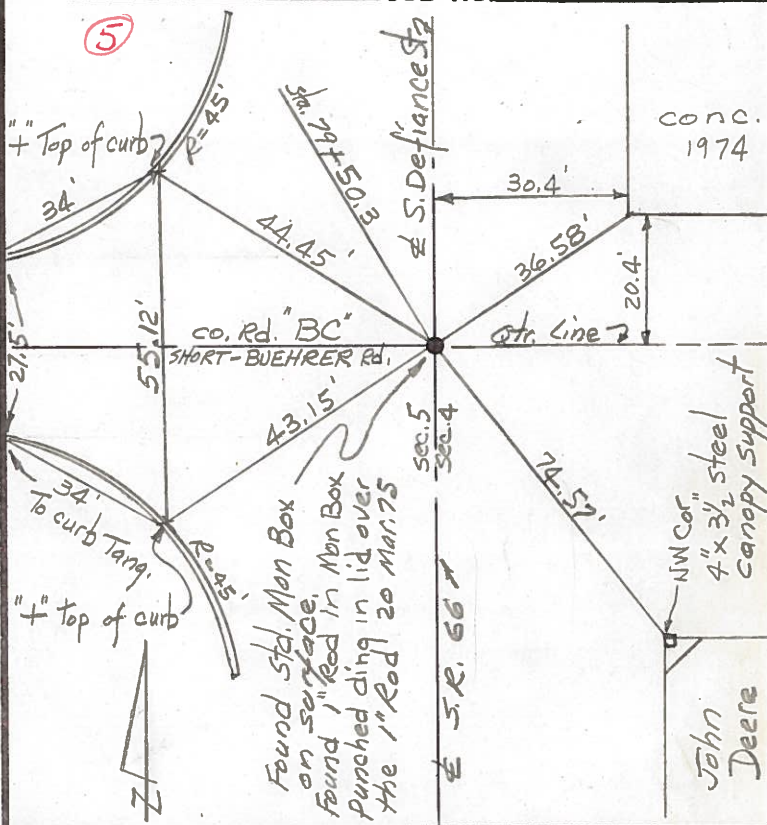
SEC. German Twp TEMP _____

DESCRIPTION CONTROL POINTS JOB NO. _____

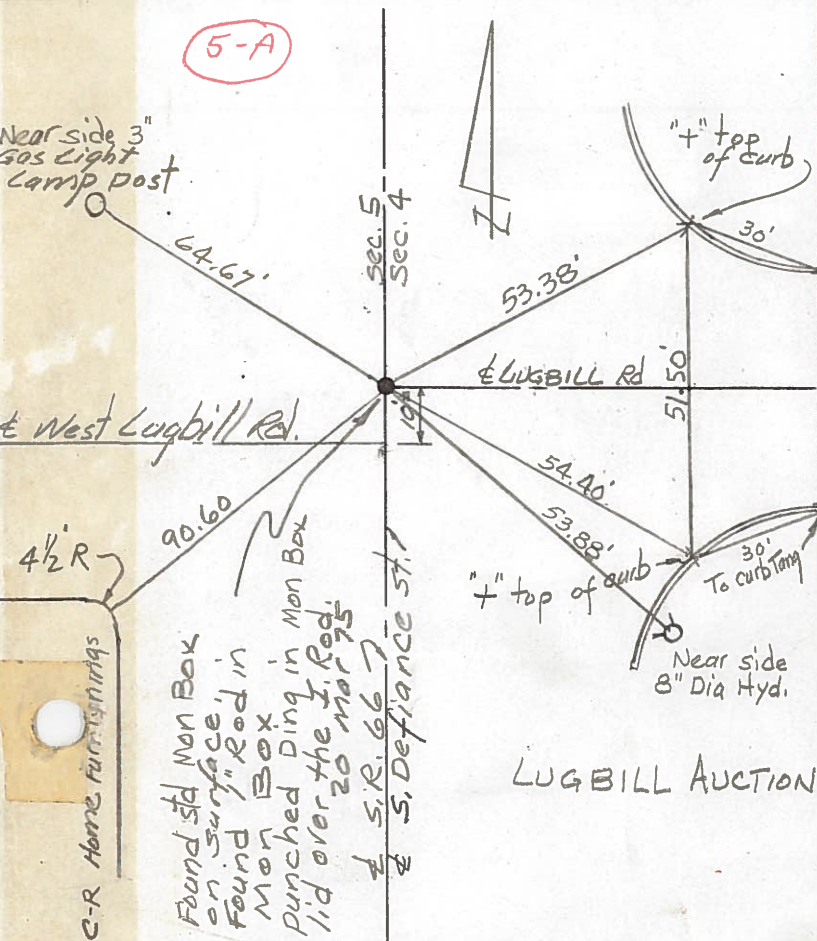
(4)



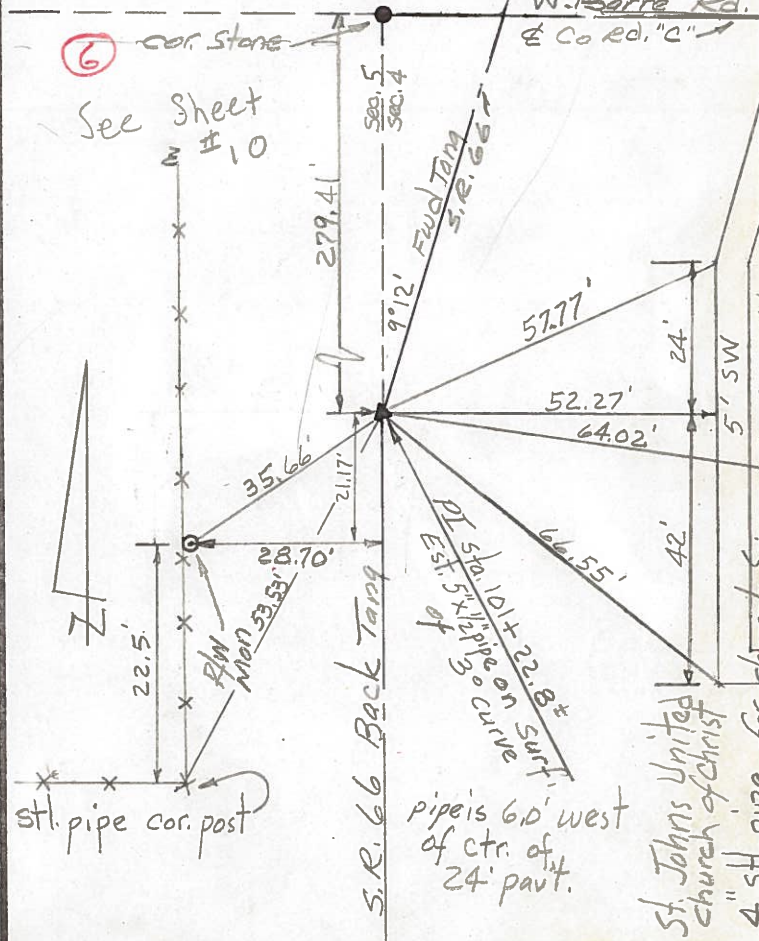
(5)



(5-A)



(6)



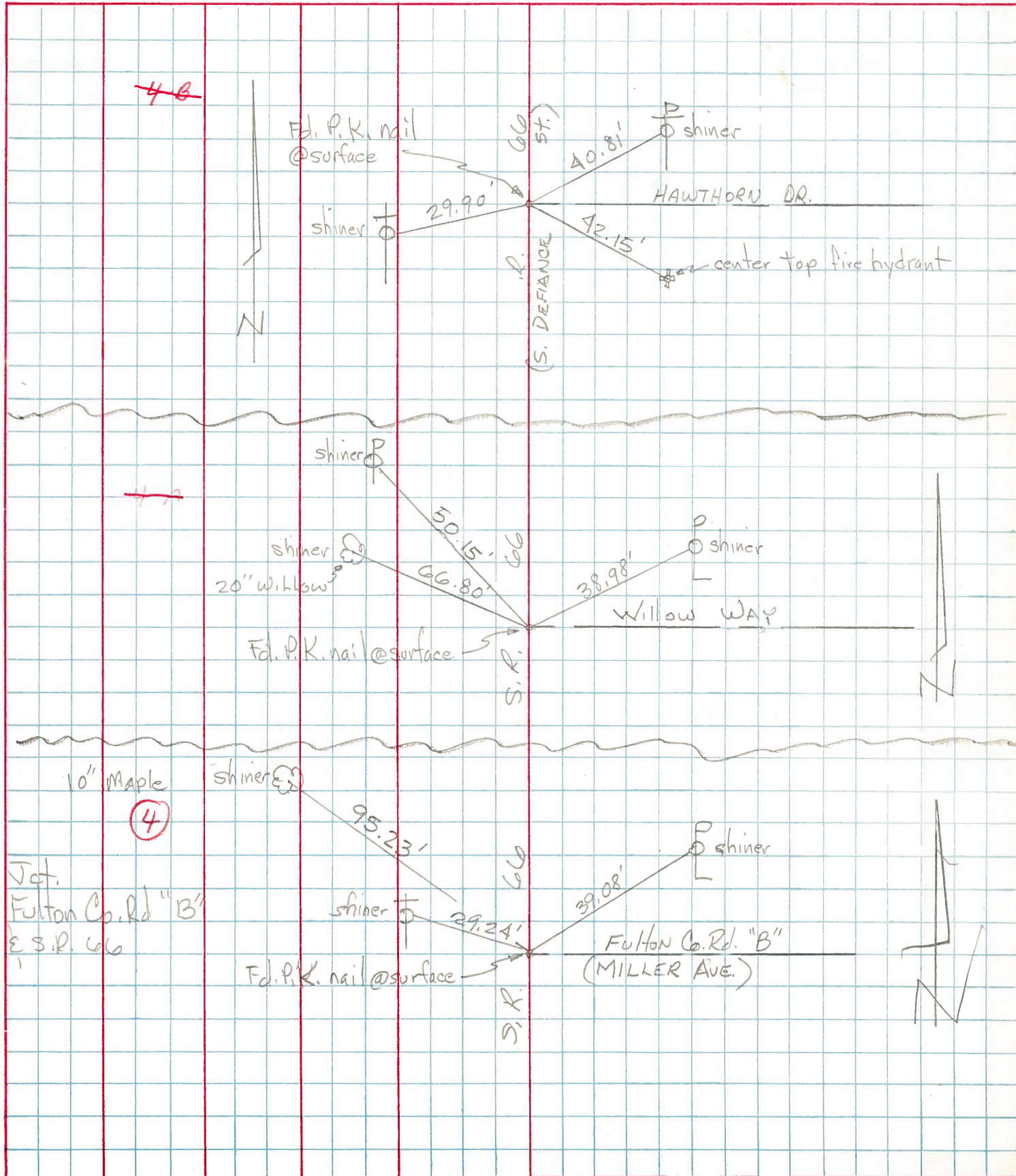
PERSONNEL TITLE PERSONNEL TITLE

COUNTY Fulton DATE MAY 1, 1973

Tomic
Neuser
Granata
Vanyo

S. R. 66 WEATHER _____
SEC. ARCHBOLD 0. TEMP. _____

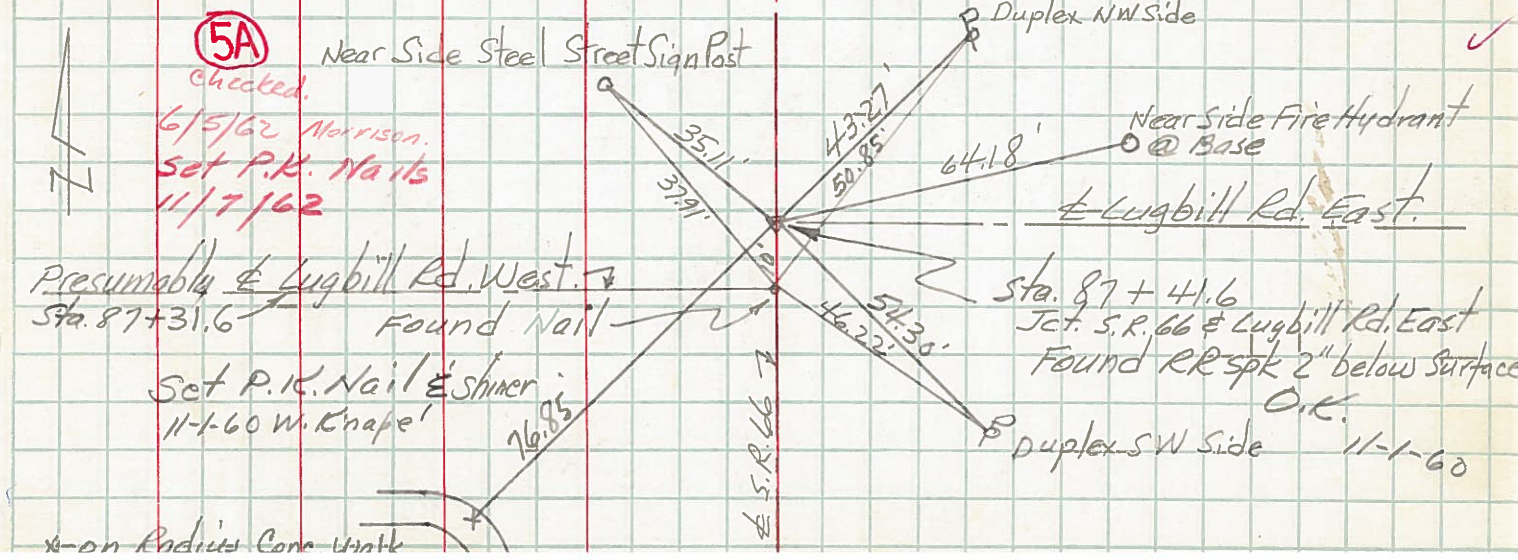
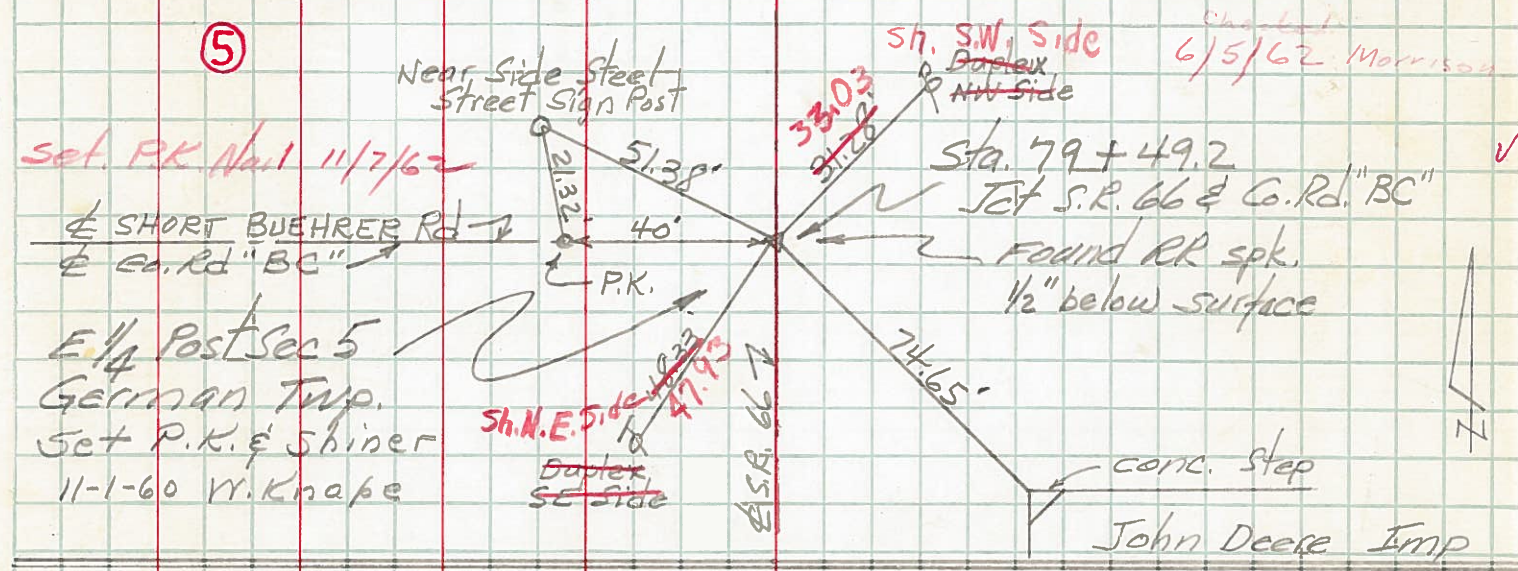
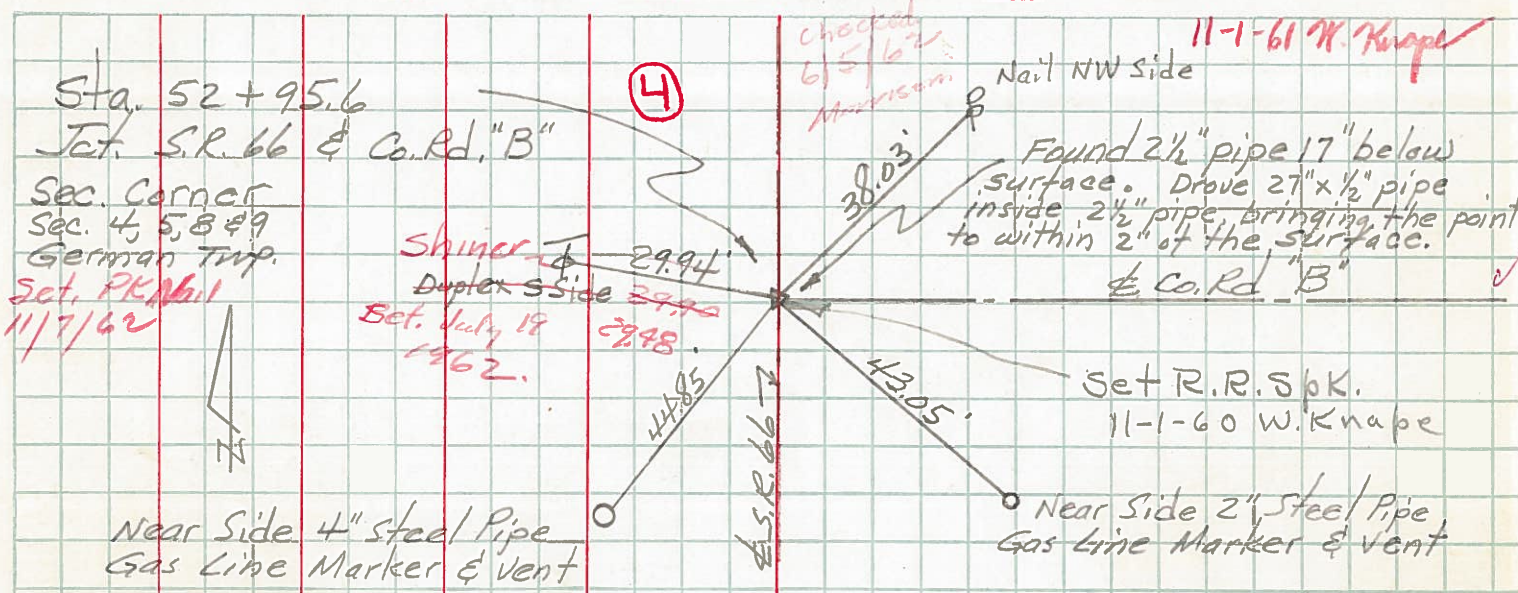
DESCRIPTION LEFT CENTER LINE RIGHT JOB NO. _____



PERSONNEL TITLE PERSONNEL TITLE
 Beach _____
 Knape _____
 Gunter _____

COUNTY Fulton DATE 14 Oct '59
 S. R. 66 WEATHER _____
 SEC. Henry-Fulton North TEMP. _____

DESCRIPTION CONTROL POINTS JOB NO. _____



x-on Radius Conc. with