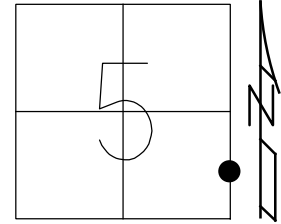


O.D.O.T. DISTRICT 2 SURVEY OFFICE (USE ONLY)

PERSONNEL _____ REFERENCE NO. 4A SHEET 10 OF 24
 NOTES MILLER DATE 01/11/19 ROUTE SR 66
 H.C. LEU WEATHER SUNNY COUNTY FULTON
 R.C. JAMES TEMP. 30° TOWNSHIP GERMAN
 DWG BY RHOADES PID 101211 SECTION 5
 T 6 N R 5 E

TYPE MONUMENT MAG/WASHER
 ON SURFACE - ~~BELOW~~ ON
 OFFSET Q PAVEMENT 2.3' LT : ~~RT~~
10.3 TO LT EDGE PAVEMENT
 STATION: 66+18

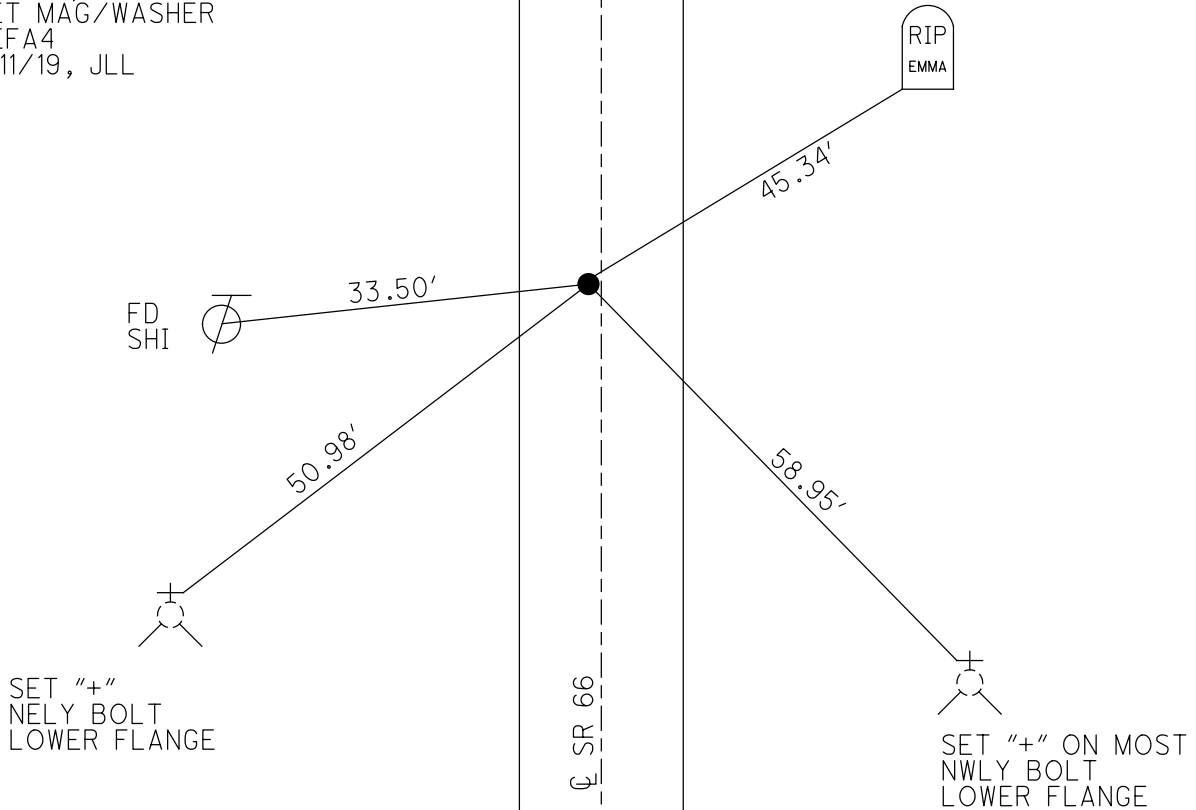


HORZ.DATUM: NAD83 2011 GEOID: NAVD88 2012A
 GRID: NORTHING: 674481.164 EASTING: 1473733.506

RECORD:
 FD P.K./WASHER
 8-8-95, CL
 SET P.K./WASHER
 9-4-96
 SET P.K./WASHER
 CALCA4
 4/2/18, JLL
 SET MAG/WASHER
 REFA4
 1/11/19, JLL

NOTE: 1/4 1/4 PT. PER
 R. BASSELMAN

TOP SW CORNER
 OF GRAVESTONE



O.D.O.T. DISTRICT 2 SURVEY OFFICE

PERSONNEL _____

REFERENCE NO. 4-A

SHEET 8 OF 24

NOTES Loehrke

H.C. Rousos

R.C. CANTERBURY

DATE 8-8-95

WEATHER Cloudy

TEMP. +00

ROUTE S.R. 66

COUNTY FULTON

TOWNSHIP GERMAN

SECTION 5

T. 6 N R. 5 E

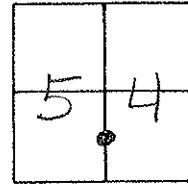
TYPE MONUMENT P.K. WASHER Reset

ON SURFACE - BELOW Yes

LEFT-☉ PAV'T. - RIGHT 2.3 Lt

10.3 TO Lt EDGE PAVEMENT

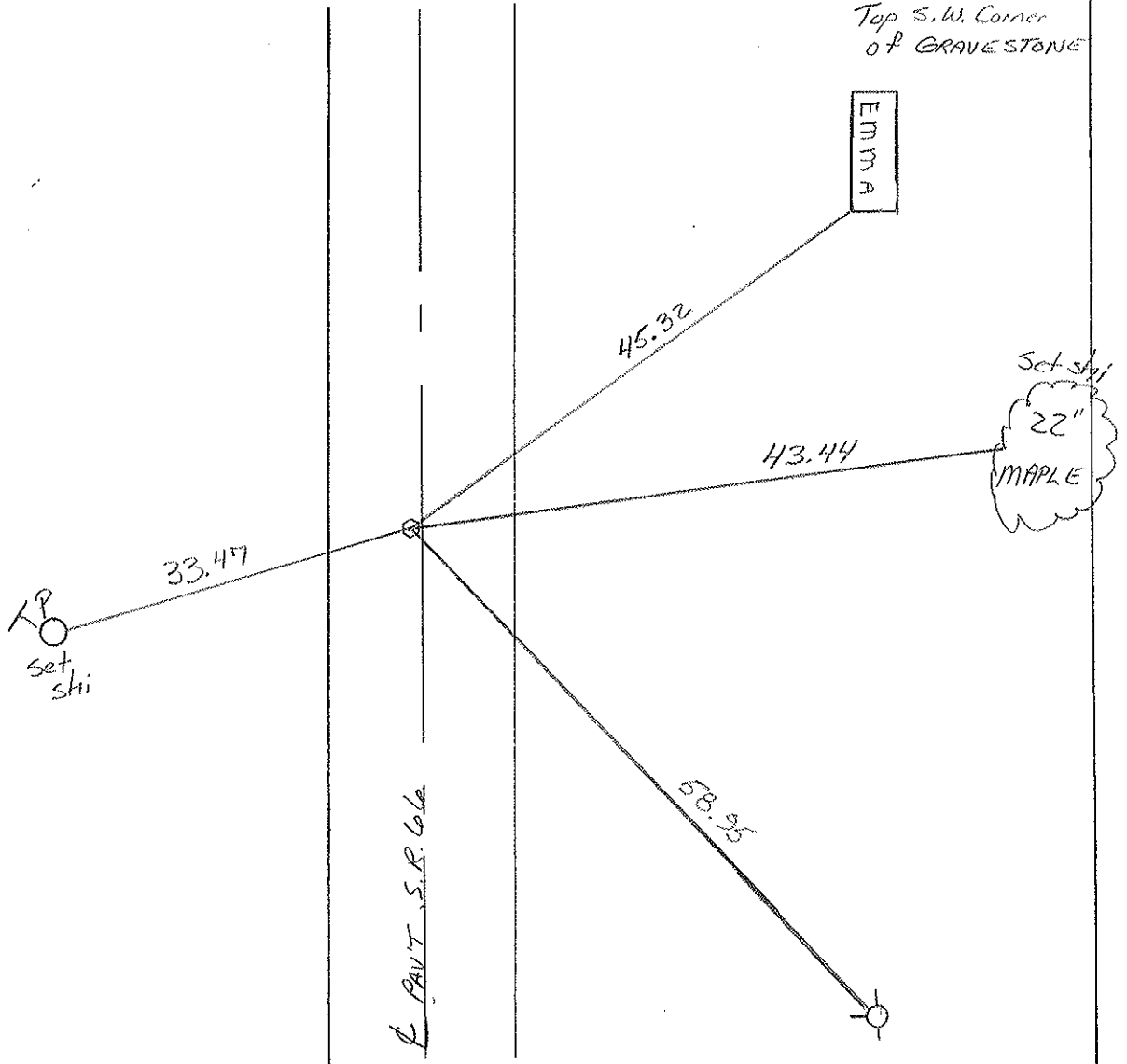
S.L.M. 66+18



RECORD $\frac{1}{4}$ - $\frac{1}{4}$ PT

PER R. BASSELMAN

Top S.W. Corner
of GRAVESTONE



P. PAV'T. S.R. 66

County FULTON S.R. 66

Date 7-18-84

Township GERMAN

Weather PT CLOUDY

Section 5

Temp. +65

T6N, R5E

Personnel Hoffman P

HOUSEHOLDER RC

BARNHISEL HC

LOEHRKE TT

4A

