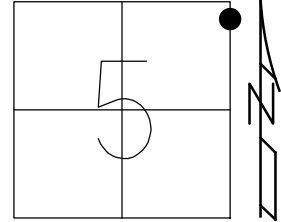


O.D.O.T. DISTRICT 2 SURVEY OFFICE (USE ONLY)

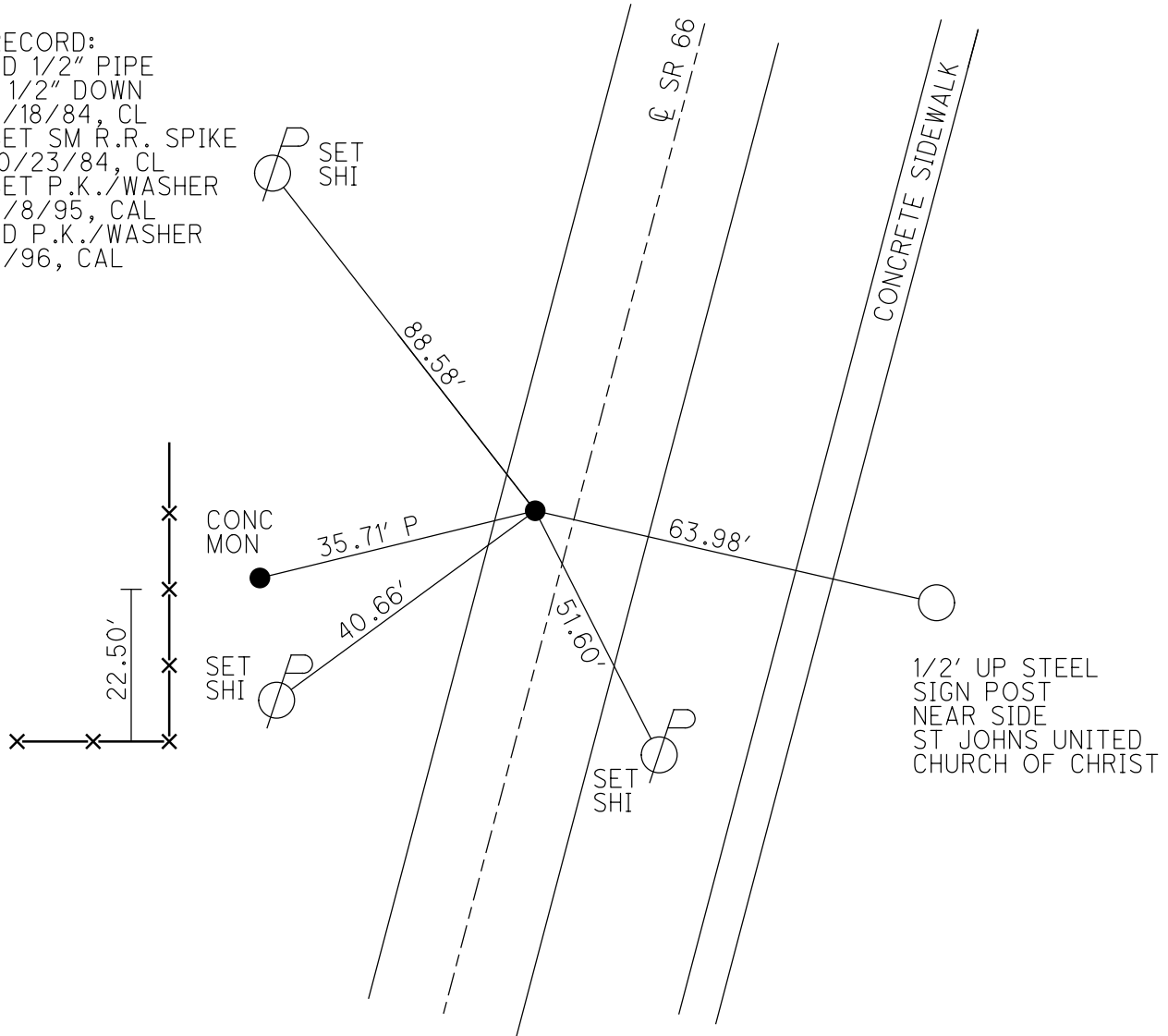
PERSONNEL _____ REFERENCE NO. 5 C SHEET 16 OF 24
 NOTES LOEHRKE DATE 7/18/84 ROUTE SR 66
 H.C. BARNHISEL WEATHER PARTLY CLOUDY COUNTY FULTON
 R.C. HOUSEHOLDER TEMP. 66° TOWNSHIP GERMAN
 HOFFMAN SECTION 5
 DWG BY NIES PID _____ T 6 N R 5 E

TYPE MONUMENT 1/2" PIPE
~~ON SURFACE~~ - BELOW 1 1/2"
 OFFSET 6.6' LT : ~~RT~~
6.4' TO LT EDGE PAVEMENT
 STATION: 101+21

HORZ. DATUM: _____ GEOID: _____
 GRID: NORTHING: _____ EASTING: _____



RECORD:
 FD 1/2" PIPE
 1 1/2" DOWN
 7/18/84, CL
 SET SM R.R. SPIKE
 10/23/84, CL
 SET P.K./WASHER
 8/8/95, CAL
 FD P.K./WASHER
 9/96, CAL



County FULTON S.R. 66

Township GERMAN

Section 5

T6N, R5E

Personnel Hollman P

Wagner B

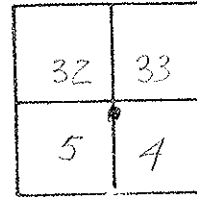
Rasmussen H

Lochner D

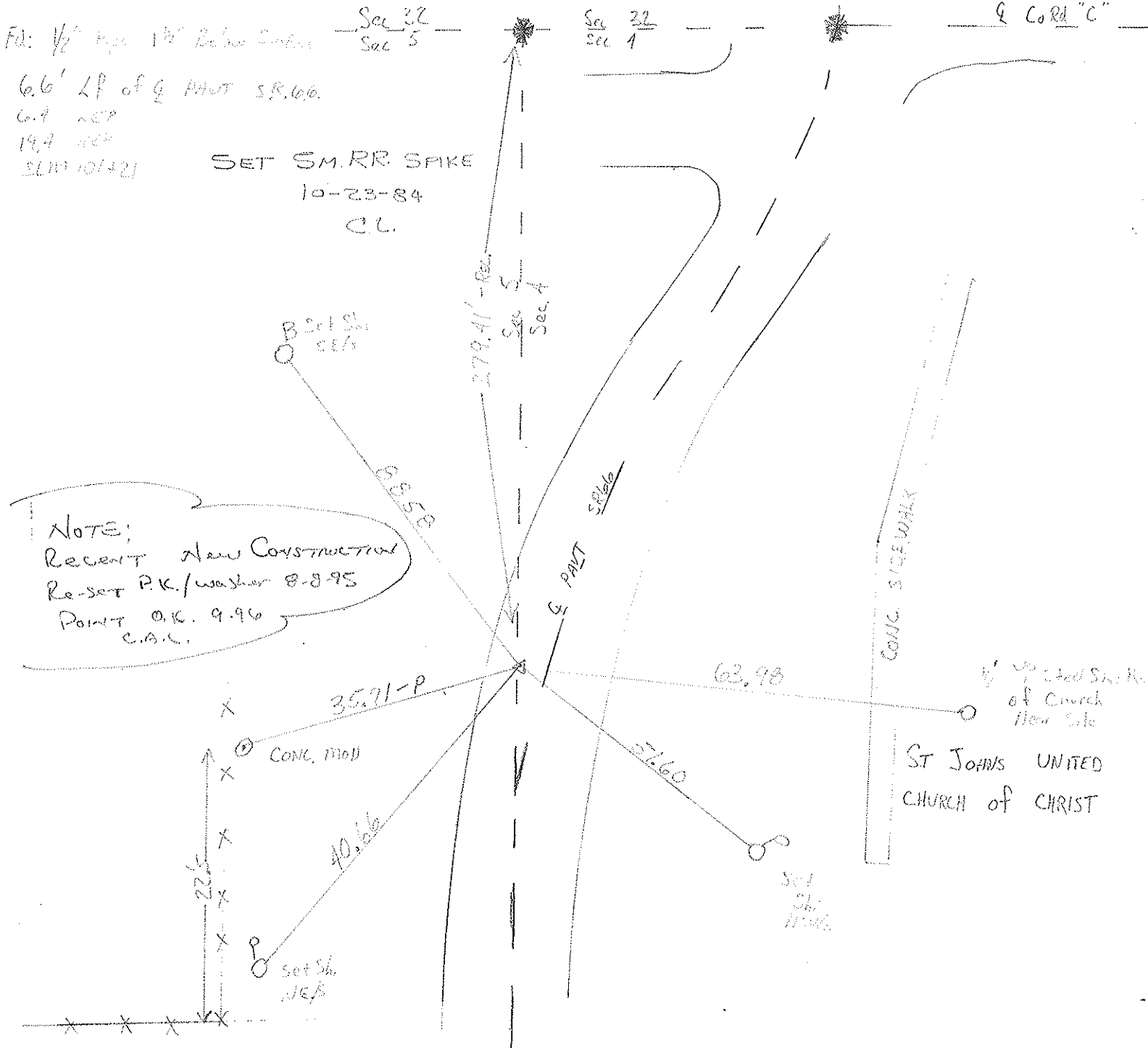
Date 7-10-81

Weather PT Clouds

Temp. +66



5-C



PERSONNEL	TITLE	PERSONNEL	TITLE
Red Beach			
W. Knape			

COUNTY FULTON DATE March 75
 S. R. 66 South ARCHBOLD WEATHER _____
 SEC. German Twp TEMP _____

DESCRIPTION CONTROL POINTS JOB NO. _____

