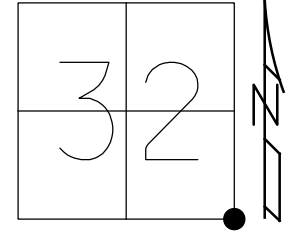


O.D.O.T. DISTRICT 2 SURVEY OFFICE (USE ONLY)

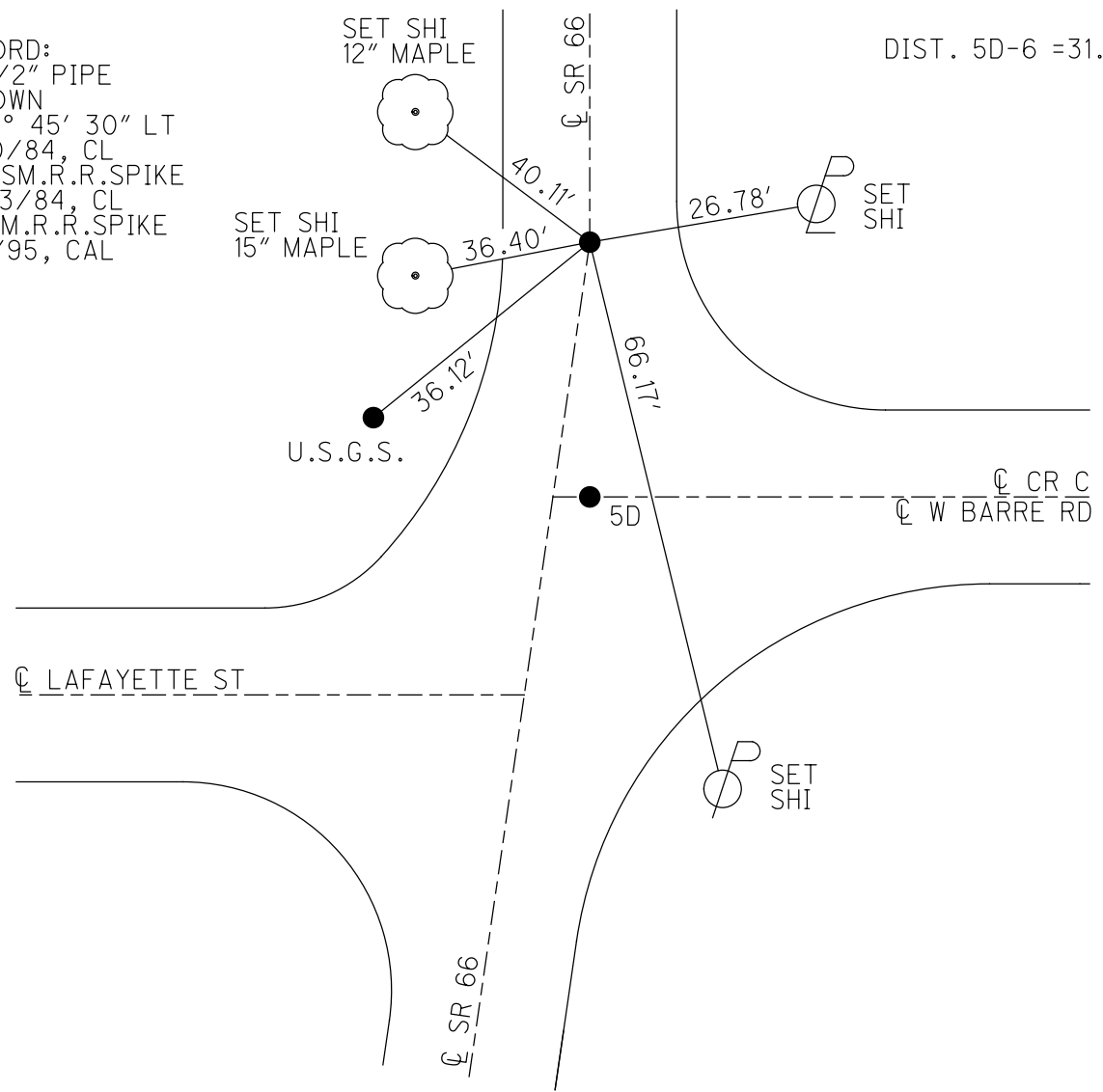
PERSONNEL _____ REFERENCE NO. 5 D SHEET 18 OF 24
 NOTES LOEHRKE DATE 7/20/84 ROUTE SR 66
 H.C. BARNHESEL WEATHER CLEAR COUNTY FULTON
 R.C. HOUSEHOLDER TEMP. 74° TOWNSHIP GERMAN
HOFFMAN SECTION 32
 DWG BY NIESE PID _____ T 7 N R 5 E

TYPE MONUMENT 1/2" PIPE
~~ON SURFACE~~ - BELOW 1"
 OFFSET ☉ PAVEMENT ON LT : RT
- TO - EDGE PAVEMENT
 STATION: 104+37



HORZ. DATUM: _____ GEOID: _____
 GRID: NORTHING: _____ EASTING: _____

RECORD:
 FD 1/2" PIPE
 1" DOWN
 $\Delta = 8^\circ 45' 30''$ LT
 7/20/84, CL
 SET SM.R.R.SPIKE
 10/23/84, CL
 FD SM.R.R.SPIKE
 8/8/95, CAL



County FULTON S.R. 66

Township GERMAN

Section 32

T7N, R5E

Personnel Holtzman P

Hansen/Johnson JR.

W.D. HICKEL NC

Lewis/KE IT

6

Date 7-20-84

Weather CLEAR

Temp. 77°

32	33
5	4



PT. A' 8" Pipe 1' Below Surface

ON & PAVT W. BARRÉ RD

S. CORNER STONE Sec 32, 33

T7N, R5E GERMAN Township

SLM 104405

PT. B' 8" Pipe 1' Below

OD & PAVT SR 66 AL

$\Delta = 8^{\circ}45'30''$ LT

SLM = 104437

SET SM. RR SPIKE

@ BOTH PTS

10-23-84

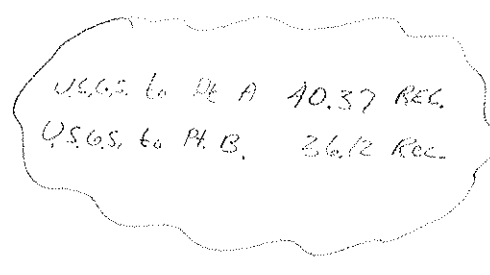
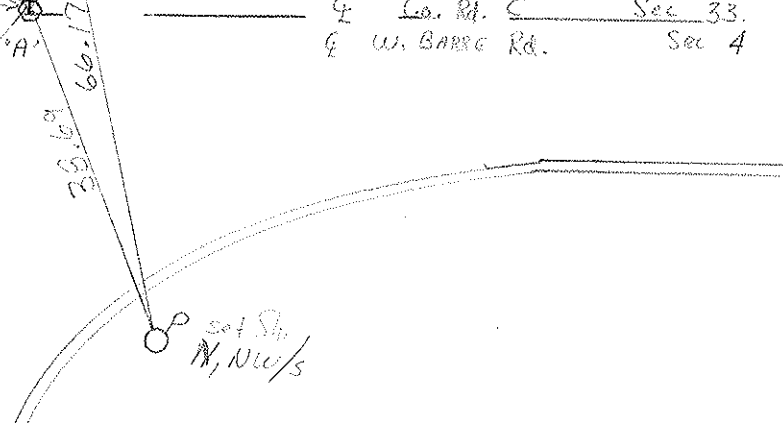
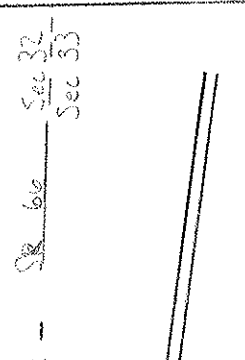
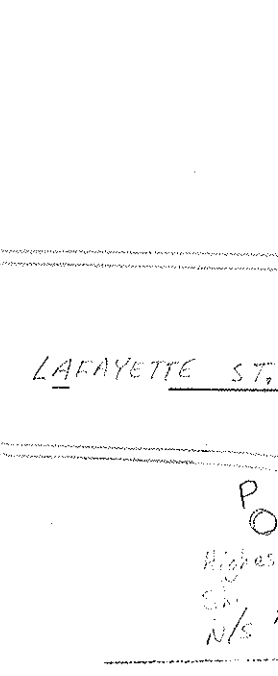
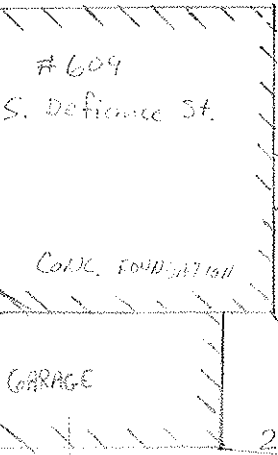
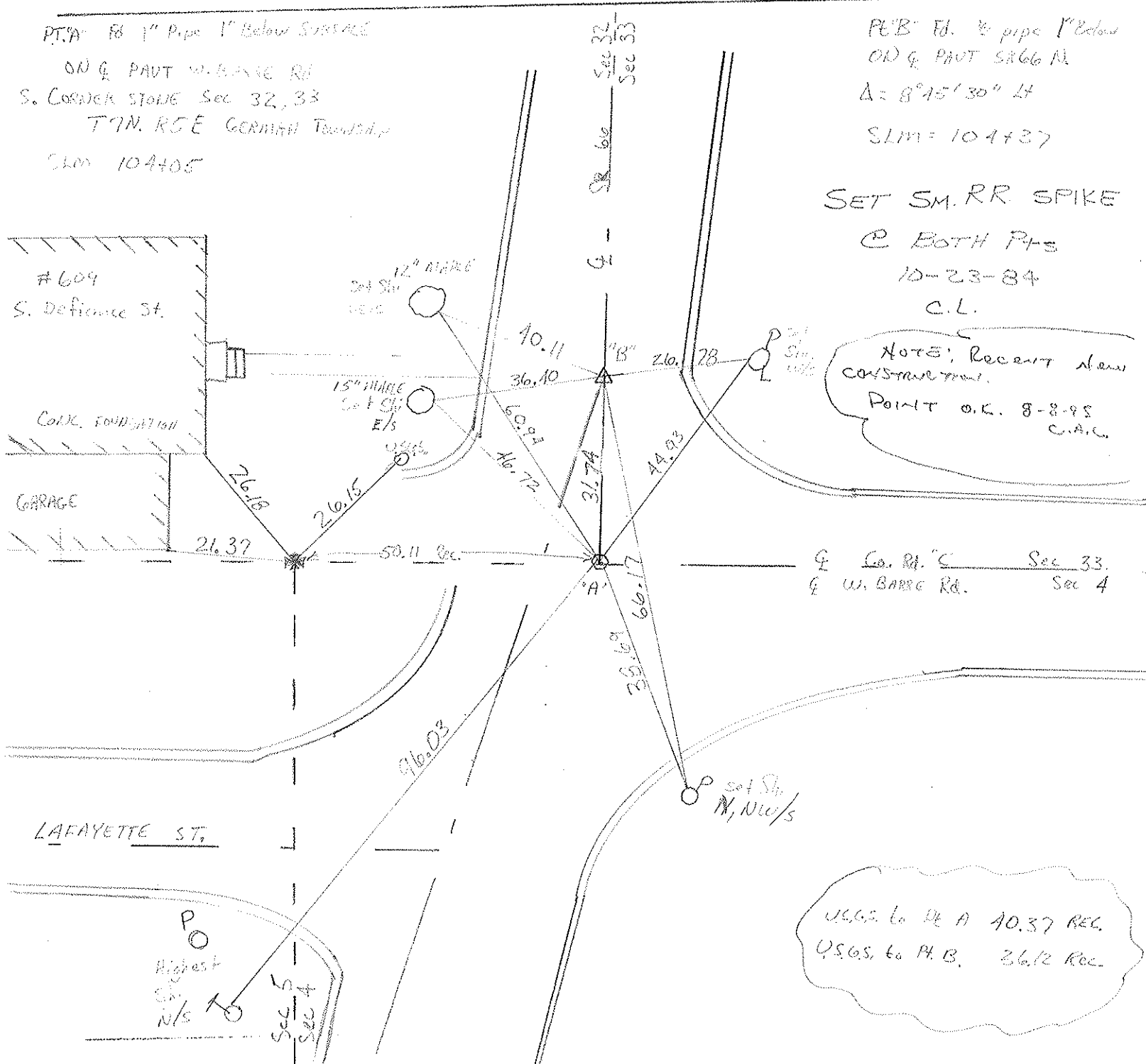
C.L.

NOTE: Recent heavy construction.

POINT O.K. 8-8-95 C.A.C.

Co. Rt. 'C' Sec 33.
W. BARRÉ Rd. Sec 4

USGS to Pt A 40.37 REC.
USGS to Pt B. 36.12 REC.



PERSONNEL TITLE PERSONNEL TITLE

Red Beach
W. Krape

COUNTY FULTON DATE APR. 1975

S. R. 66 Archbold WEATHER

SEC. W. Barre Rd. Double Corner TEMP

DESCRIPTION

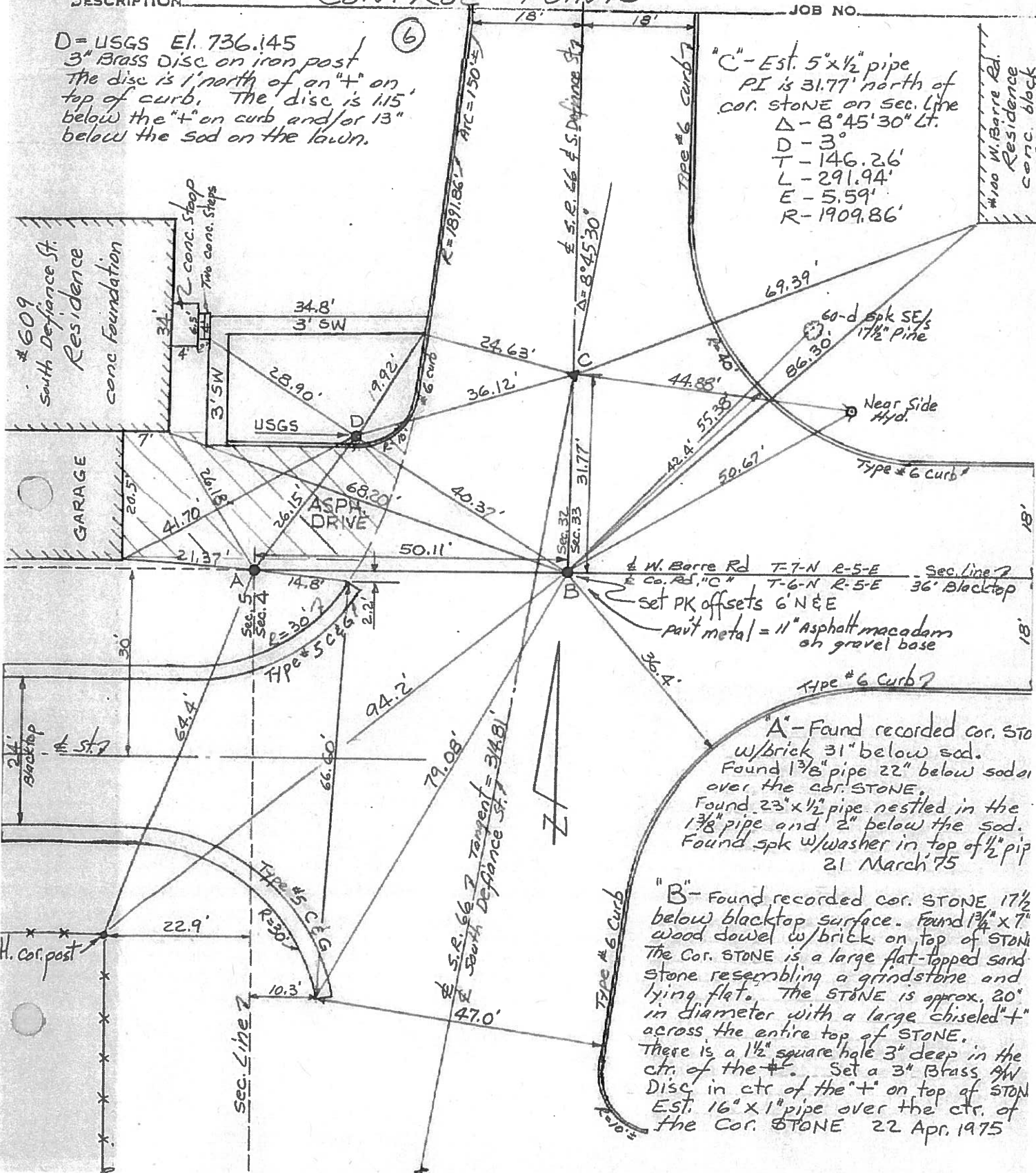
CONTROL POINTS

JOB NO.

D = USGS El. 736.145
3" Brass Disc on iron post
The disc is 1' north of an "t" on
top of curb. The disc is 1.15'
below the "t" on curb and/or 13"
below the sod on the lawn.

(6)

"C" - Est. 5"x1/2" pipe
PI is 31.77' north of
cor. stone on sec. line
 $\Delta - 8^{\circ}45'30''$ Lt.
D - 3'
T - 146.26'
L - 291.94'
E - 5.59'
R - 1909.86'



"A" - Found recorded cor. sto
w/brick 31" below sod.
Found 1 3/8" pipe 22" below sod
over the cor. stone.
Found 2 3/8" x 1/2" pipe nestled in the
1 3/8" pipe and 2" below the sod.
Found spk w/washer in top of 1/2" pip
21 March '75

"B" - Found recorded cor. stone 17 1/2
below blacktop surface. Found 1 3/4" x 7"
wood dowel w/brick on top of stone.
The cor. stone is a large flat-topped sand
stone resembling a grindstone and
lying flat. The stone is approx. 20"
in diameter with a large chiseled "t"
across the entire top of stone.
There is a 1 1/2" square hole 3" deep in the
ctr. of the "t". Set a 3" Brass SW
Disc in ctr of the "t" on top of stone
Est. 16" x 1" pipe over the ctr. of
the cor. stone 22 Apr. 1975

#100 W. Barre Rd.
Residence
conc. block

#609
South Defiance St.
Residence
conc. Foundation

GARAGE

ASPH. DRIVE

Sec. Line 2

Z

S.R. 66 7
Tangent = 348.1'
South Defiance St.

Type #6 Curb

Type #6 Curb

part metal = 11" Asphalt macadam
on gravel base

set PK offsets 6' N&E

W. Barre Rd T-7-N R-5-E Sec. line 2
Co. Rd. "C" T-6-N R-5-E 36' Blacktop

Type #6 Curb

60-d Spk SE 1/4 1 1/2" pipe

Near Side Hyd.

Type #6 Curb

S.R. 66 & S. Defiance St

R=1891.86' ARC=150.4'

24.63'

36.12'

40.37'

50.11'

36.4'

79.08'

94.2'

66.60'

10.3'

47.0'

22.9'

21.37'

41.70'

20.5'

34.8'

3' SW

28.90'

19.92'

USGS

26.13'

4.70'

14.8'

R=30.7

Type #5 C&G

64.4'

2.2'

2.2'

66.60'

Type #5 C&G

R=30.7

22.9'

10.3'

47.0'

21.37'

41.70'

20.5'

45' 2 conc. Steps

45' 2 conc. Steps

45' 2 conc. Steps

45' 2 conc. Steps

45' 2 conc. Steps

45' 2 conc. Steps

45' 2 conc. Steps

45' 2 conc. Steps

45' 2 conc. Steps

45' 2 conc. Steps

45' 2 conc. Steps

45' 2 conc. Steps

45' 2 conc. Steps

45' 2 conc. Steps

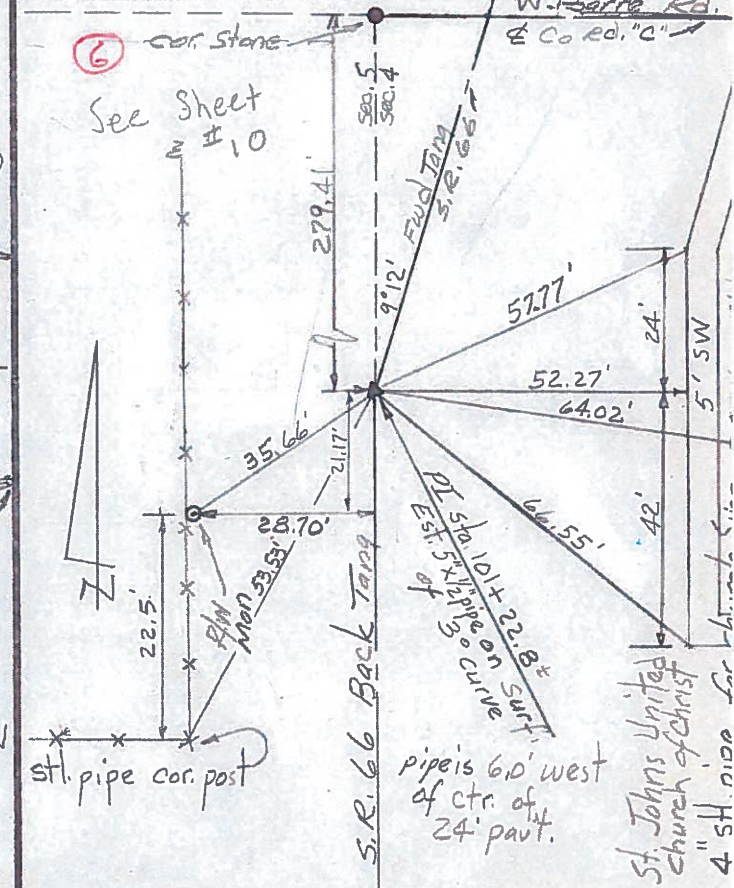
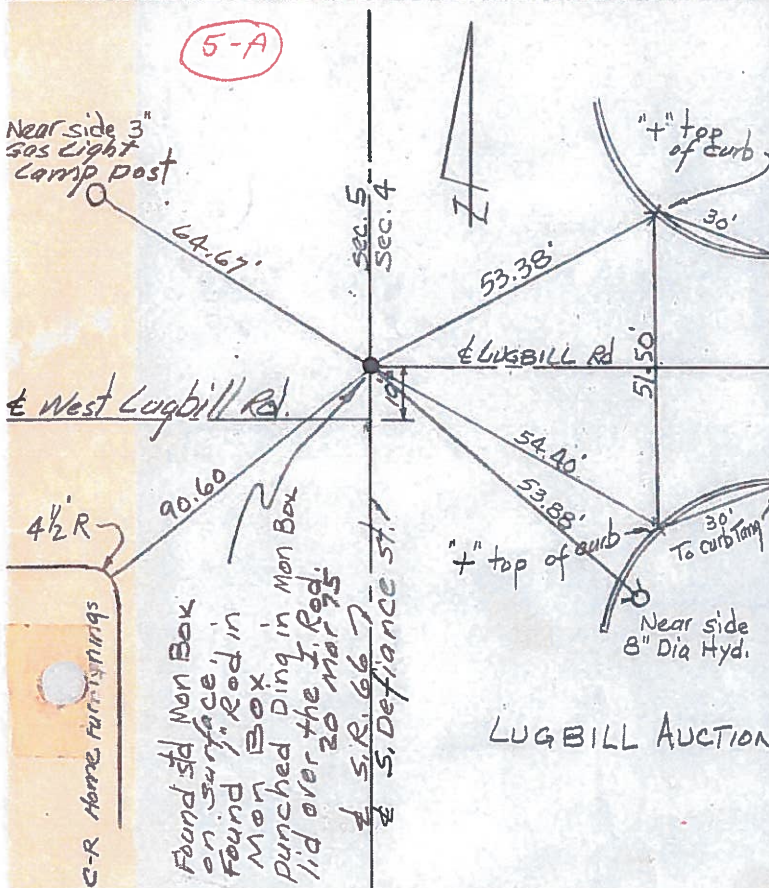
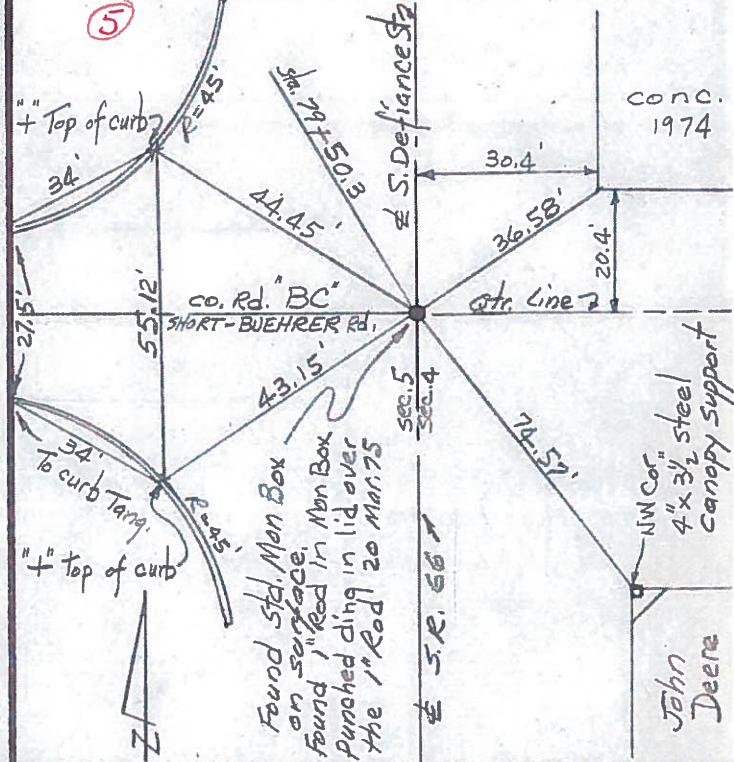
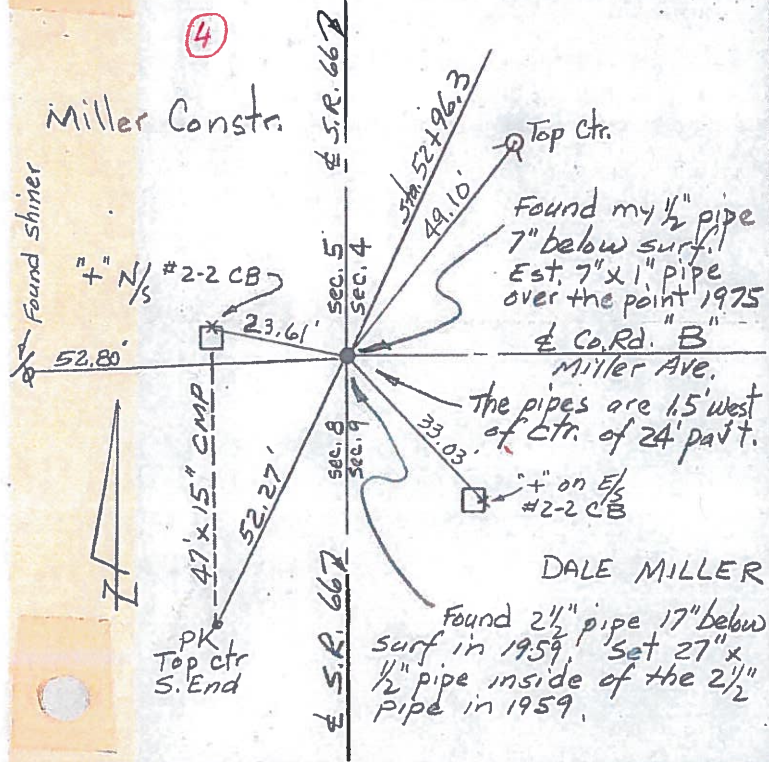
45' 2 conc. Steps

45' 2 conc. Steps

45' 2 conc. Steps

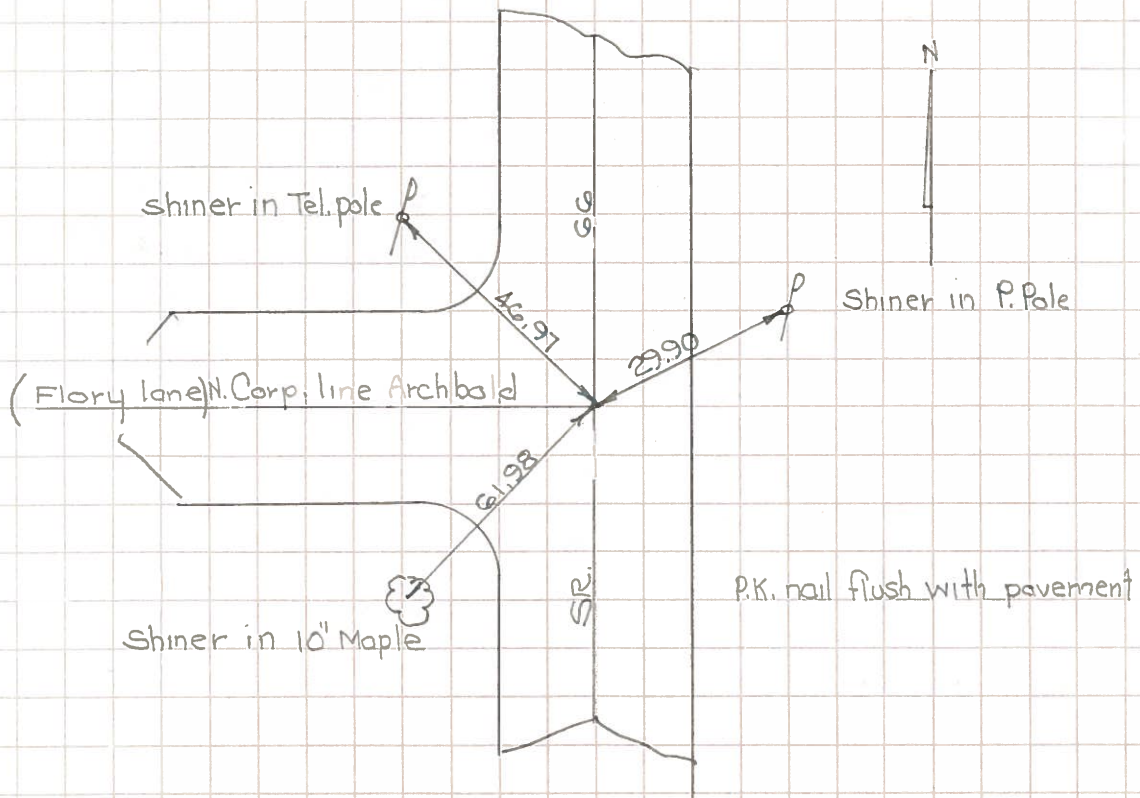
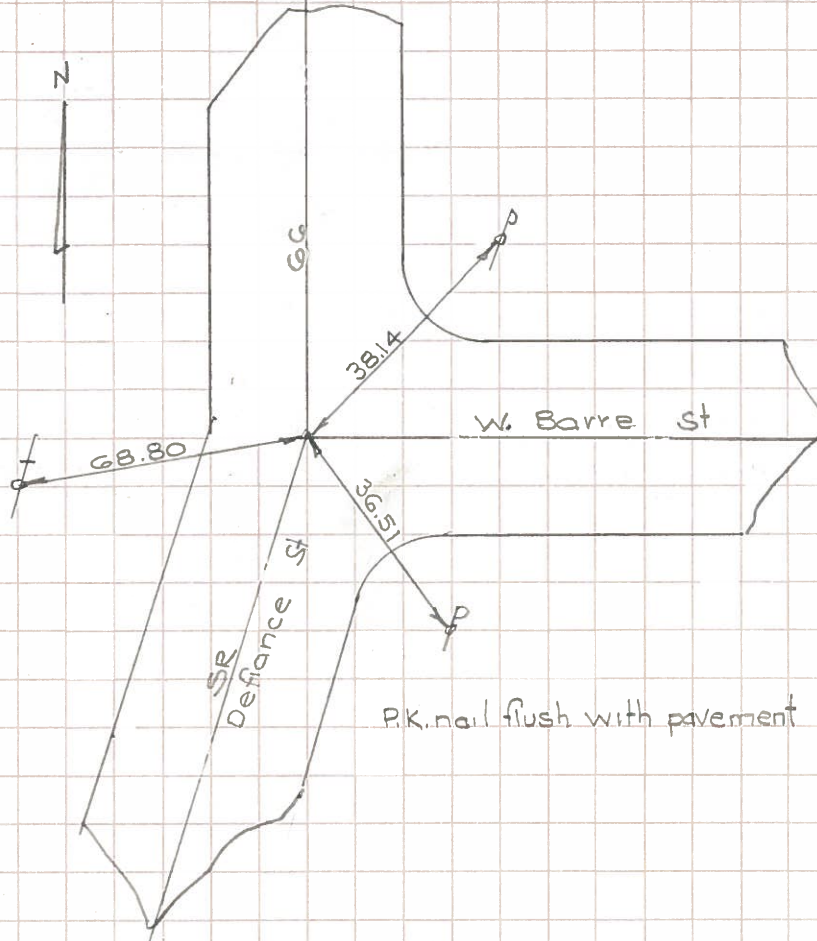
PERSONNEL	TITLE	PERSONNEL	TITLE	COUNTY	DATE
Red Beach				FULTON	March 75
W. Knape					
				S. R. 66	WEATHER
				South ARCHBOLD	
				SEC. German Twp	TEMP

DESCRIPTION **CONTROL POINTS** JOB NO.



COMPUTATION SHEET

STATE OF OHIO - DEPARTMENT OF HIGHWAYS - BUREAU OF LOCATION AND DESIGN _____ COLUMBUS, OHIO
BY Denno - Curtis - Granata - Omev DATE June 13, 1966 NO. _____ OF _____ SHEETS
COUNTY Fulton SECTION _____
DIV. NO. 2 S.R. 66 U.S.R. _____ I. R. _____
SUBJECT OF THIS SHEET Munument Ref SR. 66 Archbold



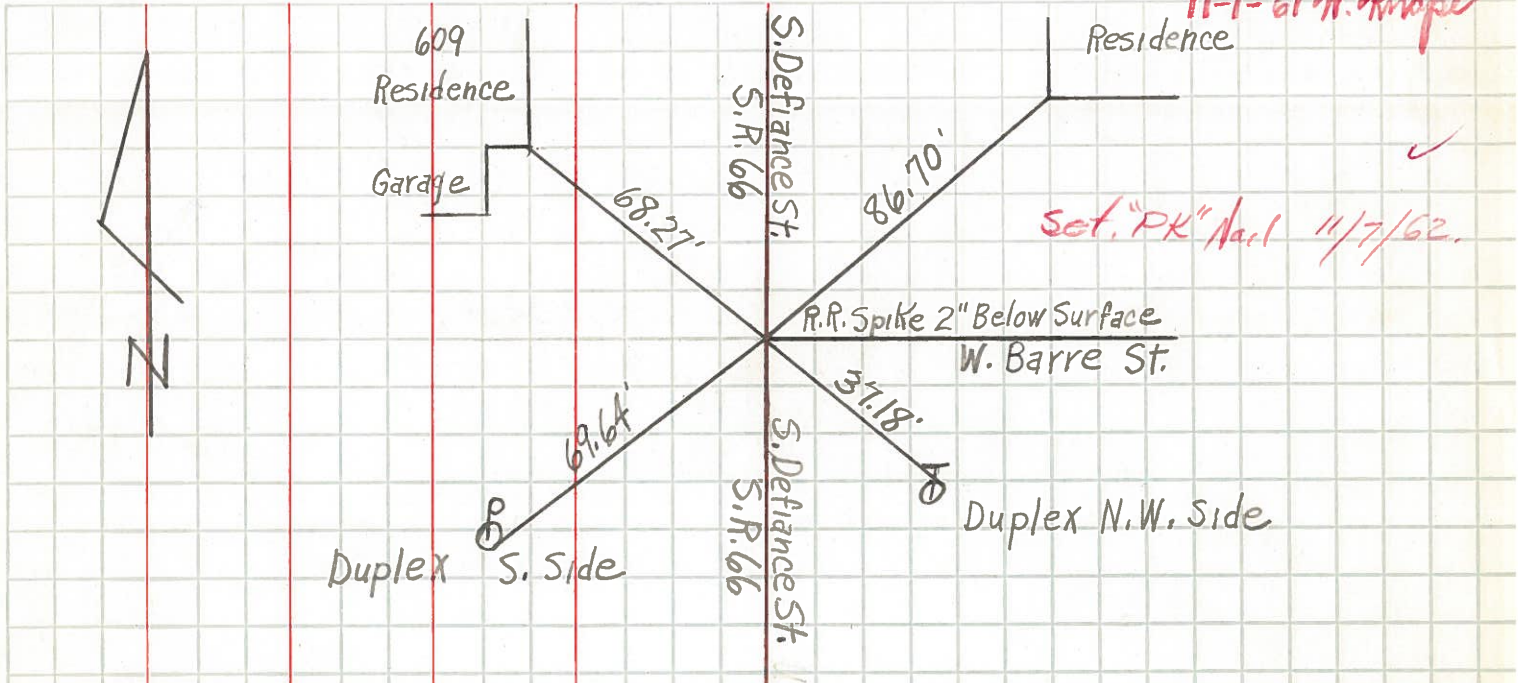
PERSONNEL	TITLE	PERSONNEL	TITLE
Knape			
Armbruster			
Gunter			
Mohler			

COUNTY Fulton DATE 11-2-60
 S. R. 66 WEATHER Cloudy
 SEC. _____ TEMP. 50°

DESCRIPTION Archbold, S. Defiance St.

JOB NO. _____

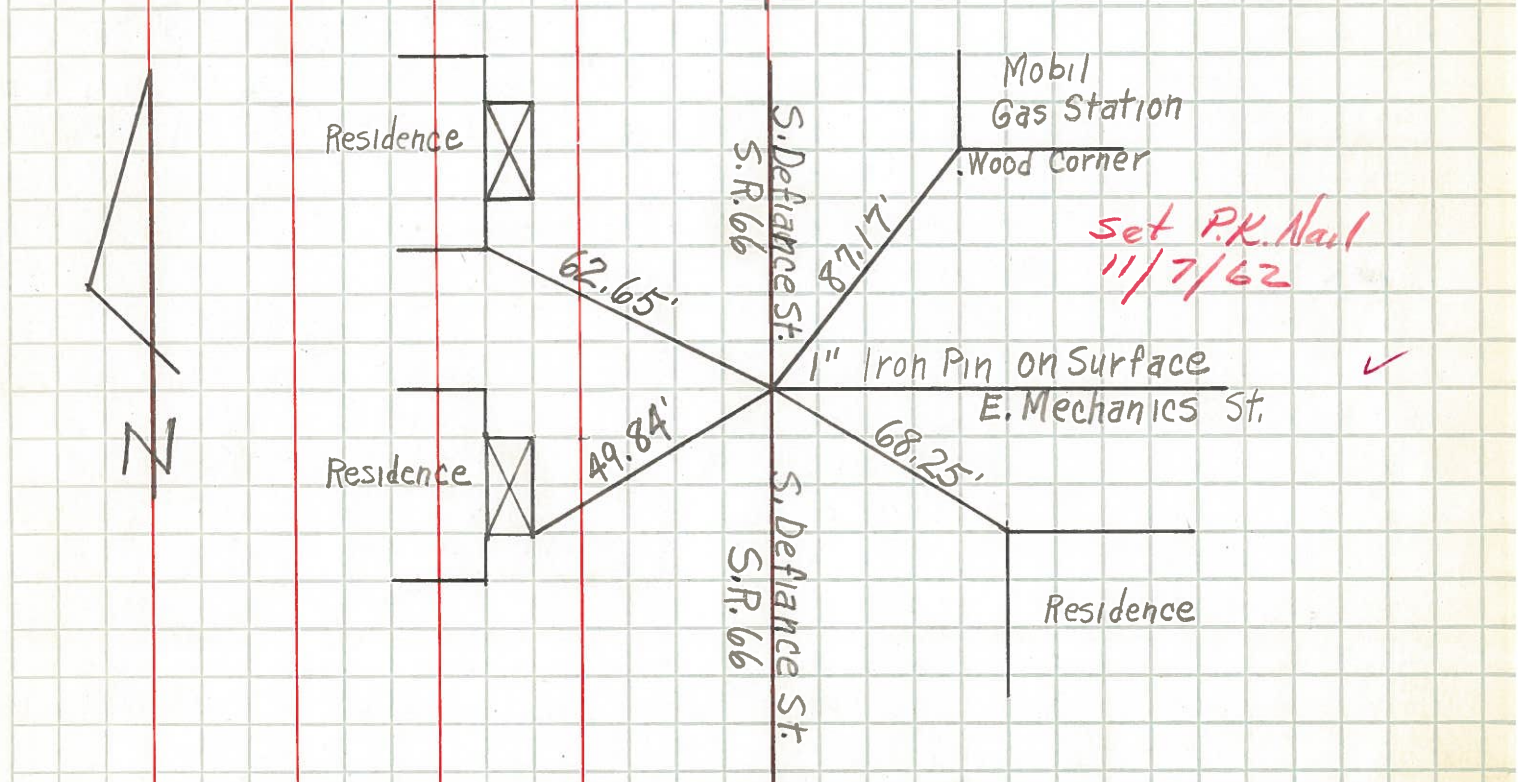
LEFT CENTER LINE RIGHT



11-1-61 W. Knape

Set "PK" Nail 11/7/62.

Intersection W. Barre St. and S. Defiance St. - Archbold, Ohio



Set P.K. Nail 11/7/62

Intersection E. Mechanics St. and S. Defiance St. - Archbold, Ohio