

O.D.O.T. DISTRICT 2 SURVEY OFFICE (USE ONLY)

PERSONNEL

REFERENCE NO. 6 A

SHEET 20 OF 24

NOTES LOEHRKE

DATE 8/10/95

ROUTE SR 66

H.C. ROUSOS

WEATHER CLOUDY

COUNTY FULTON

R.C. CANTERBURY

TEMP. 85°

TOWNSHIP GERMAN

SECTION 32

DWG BY NIESE PID _____

T 7 N R 5 E

TYPE MONUMENT MONBOX

ON SURFACE - ~~BELOW~~ ON

OFFSET \varnothing PAVEMENT ON LT : RT

18.4' TO LT EDGE PAVEMENT

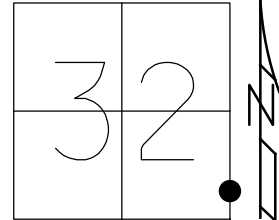
STATION: 110+73

HORIZ.DATUM: _____

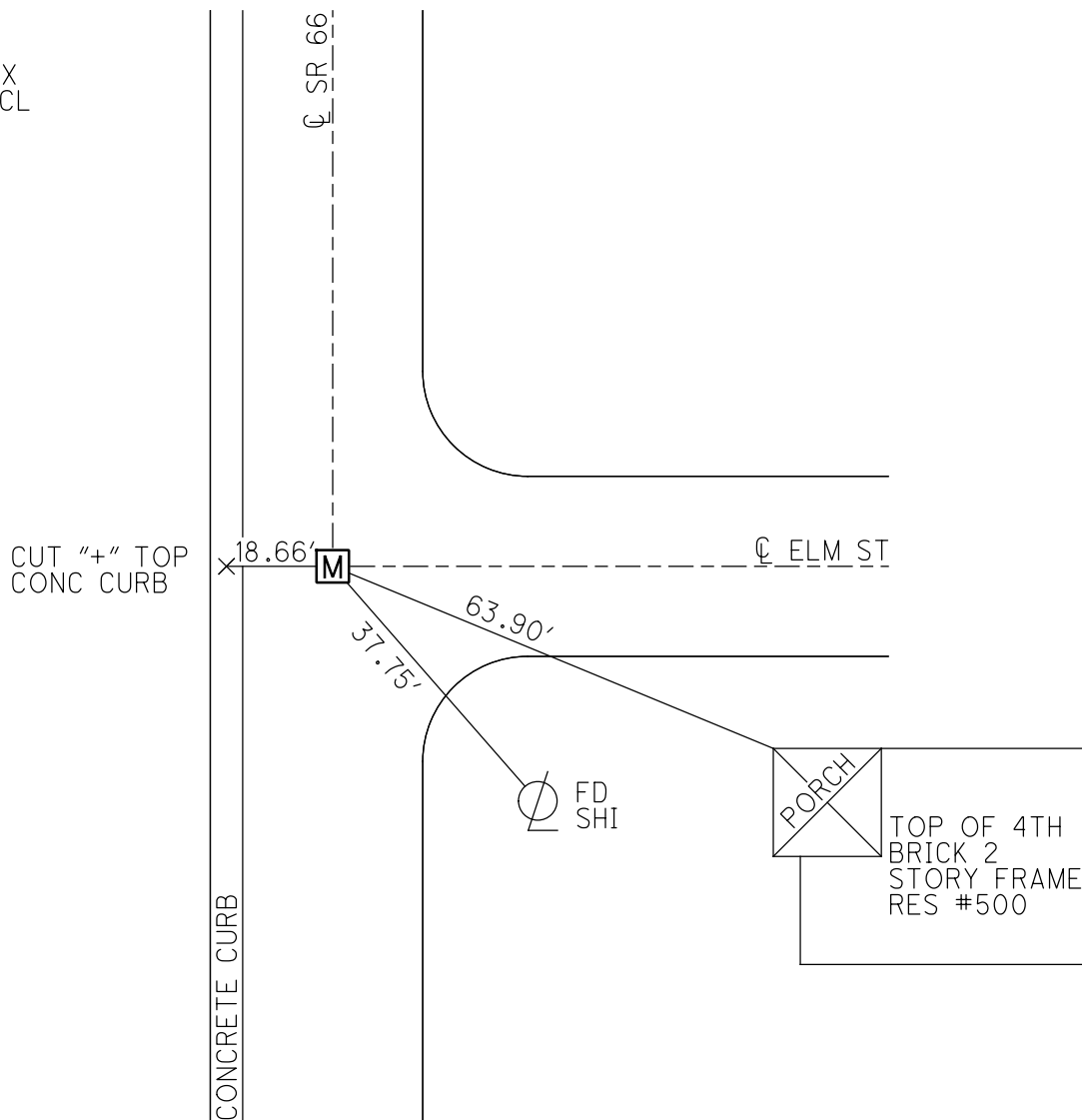
GEOID: _____

GRID: NORTHING: _____

EASTING: _____



RECORD:
FD MONBOX
8/10/95, CL
9/4/96

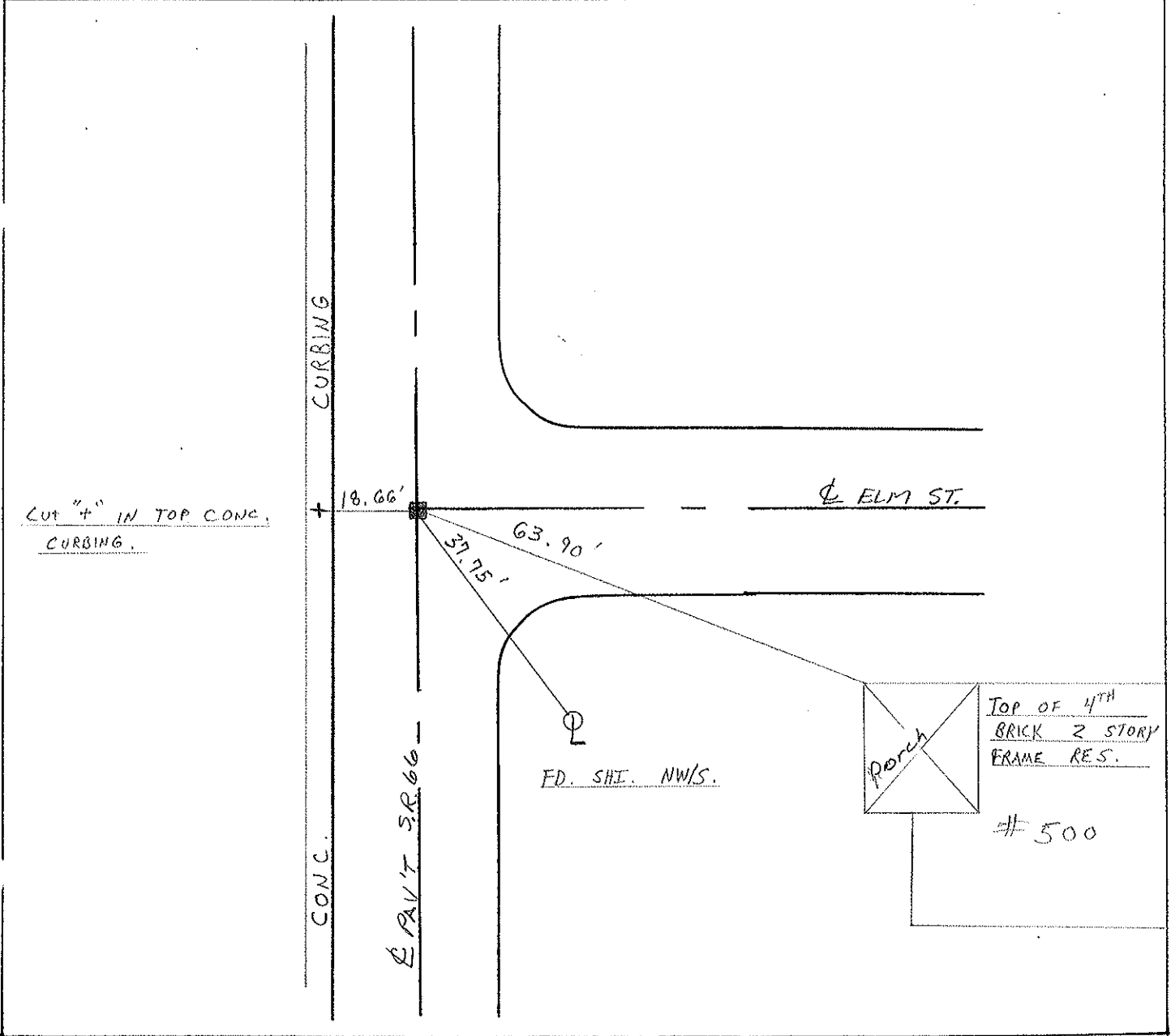
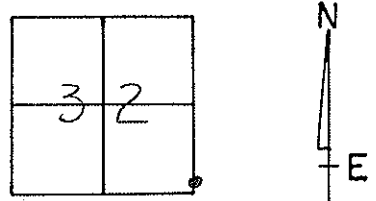


O.D.O.T. DISTRICT 2 SURVEY OFFICE

PERSONNEL _____ REFERENCE NO. G-A SHEET 14 OF 24
 NOTES LOEHRKE
 H.C. ROUSOS DATE 8-10-95 ROUTE SR 66
 R.C. CANTERBURY WEATHER CLOUDY COUNTY FULTON
 _____ TEMP. +85° TOWNSHIP GERMAN
 _____ SECTION 32
 _____ T. 7 N. R 5 E

OK. 5-7-96

TYPE MONUMENT MON BOX
 ON SURFACE - ~~BELOW~~ ON SURFACE
 LEFT - ~~CL~~ PAV'T. - RIGHT CL OF BOTH PAVS.
~~18.4 TO LT - EDGE PAVEMENT~~ FACE OF CURB
 S.L.M. 110 + 73



County FULTON S.R. 66

Township GERMAN

Section 32

T7N, R5E

Personnel Hsffman P

Householder RC

BARNY WC

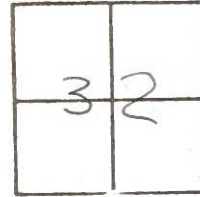
LOEHRKE II

6A

Date 7-20-84

Weather PT CLOUDY

Temp. +78



Fd MON Box @ SURFACE
 Did Not open, Ref to CURB of LID
 & of Both PARTS

SLM 110+73

RAISE AS OF
 10-23-84
 C.L.

