

O.D.O.T. DISTRICT 2 SURVEY OFFICE (USE ONLY)

PERSONNEL

REFERENCE NO. 6 C

SHEET 22 OF 24

NOTES LOEHRKE DATE 8/10/95
 H.C. ROUSOS WEATHER CLOUDY
 R.C. CANTERBURY TEMP. 85°

ROUTE SR 66
 COUNTY FULTON
 TOWNSHIP GERMAN
 SECTION 32
 T 7 N R 5 E

DWG BY NIESE PID _____

TYPE MONUMENT SM.R.R.SPIKE

ON SURFACE - ~~BELOW~~ ON

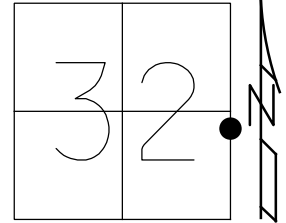
OFFSET Q PAVEMENT ON LT : RT

- TO - EDGE PAVEMENT

STATION: 126+03

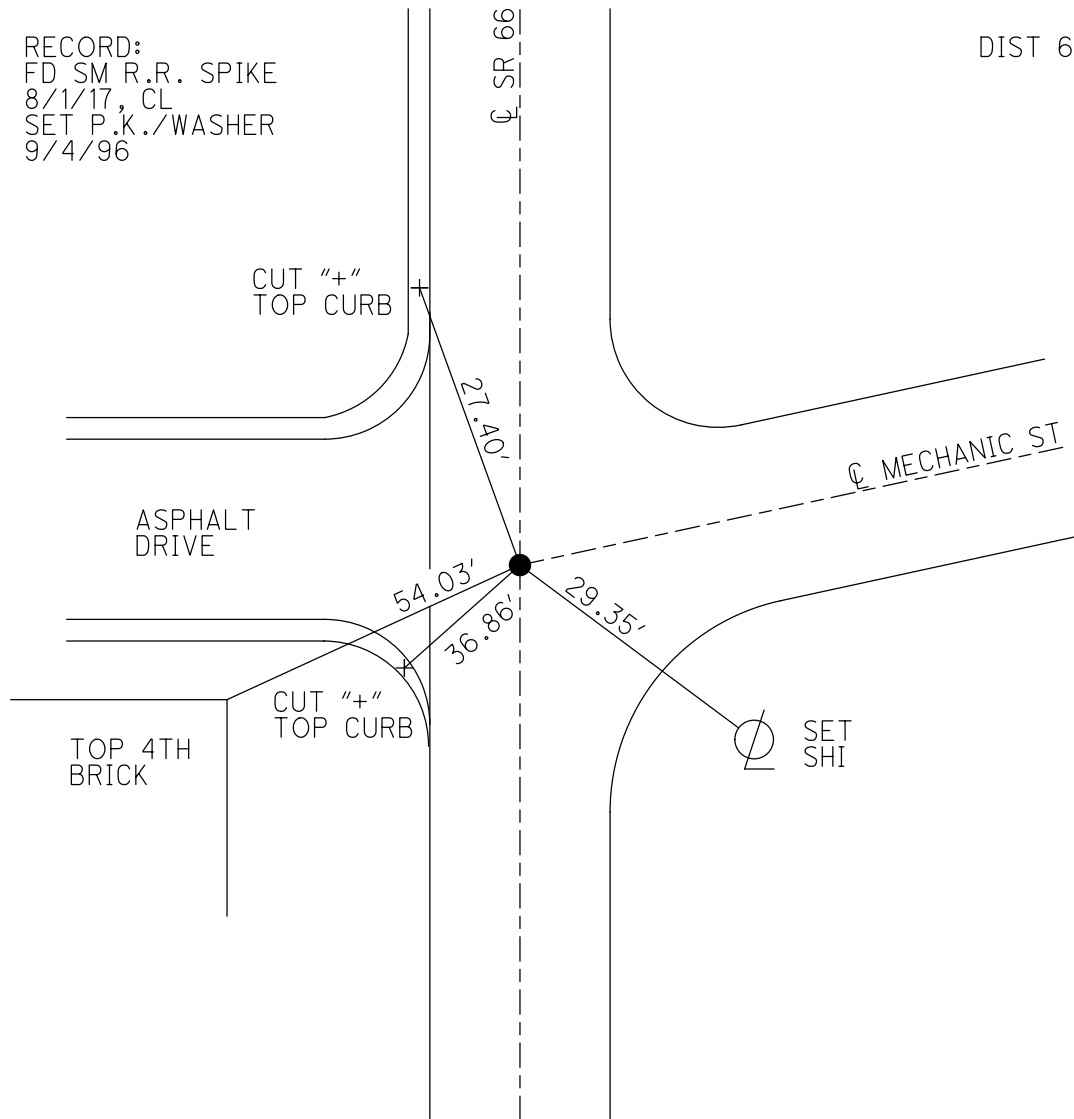
HORZ.DATUM: _____ GEOID: _____

GRID: NORTHING: _____ EASTING: _____



RECORD:
 FD SM R.R. SPIKE
 8/1/17, CL
 SET P.K./WASHER
 9/4/96

DIST 6C - 7 = 134.27'



O.D.O.T. DISTRICT 2 SURVEY OFFICE

PERSONNEL _____

REFERENCE NO. 7

SHEET 16 OF 24

NOTES LOCHRIKE

H.C. Rausos

R.C. CANTONBURY

DATE 8-10-95

WEATHER Humid

TEMP. +85

ROUTE S.R. 66

COUNTY FULTON

TOWNSHIP GERMAN

SECTION 32

T7 N R 5 E

Set P.K. / WASHER - 9-4-96

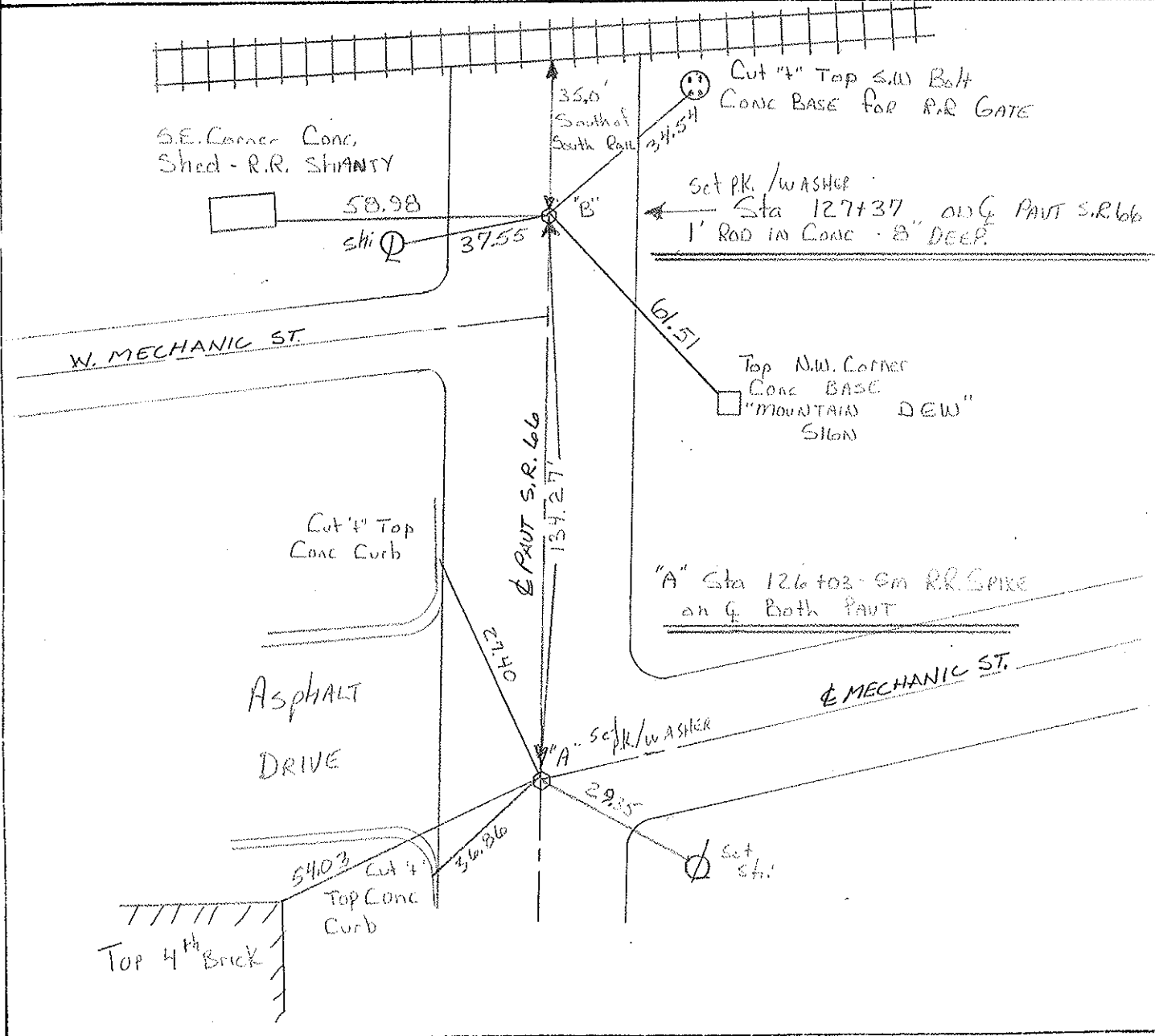
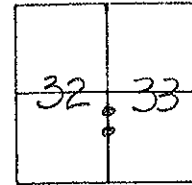
TYPE MONUMENT A = RR Spike B = 1" Iron Rod in Conc.

ON SURFACE - BELOW A = yes B = 8" Deep

LEFT - C PAV'T. - RIGHT Yes

TO EDGE PAVEMENT

S.L.M. A = 126+03 B = 127+37



County FULTON S.R. 66

Township GERMAN

Section 32

T7N, R5E

Personnel HOFFMAN P

HAUSCHOLDER RC

BARNHISEL HC

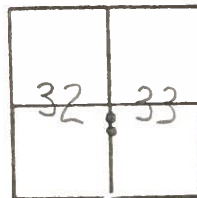
LOEHRKE JJ

7

Date 7-20-84

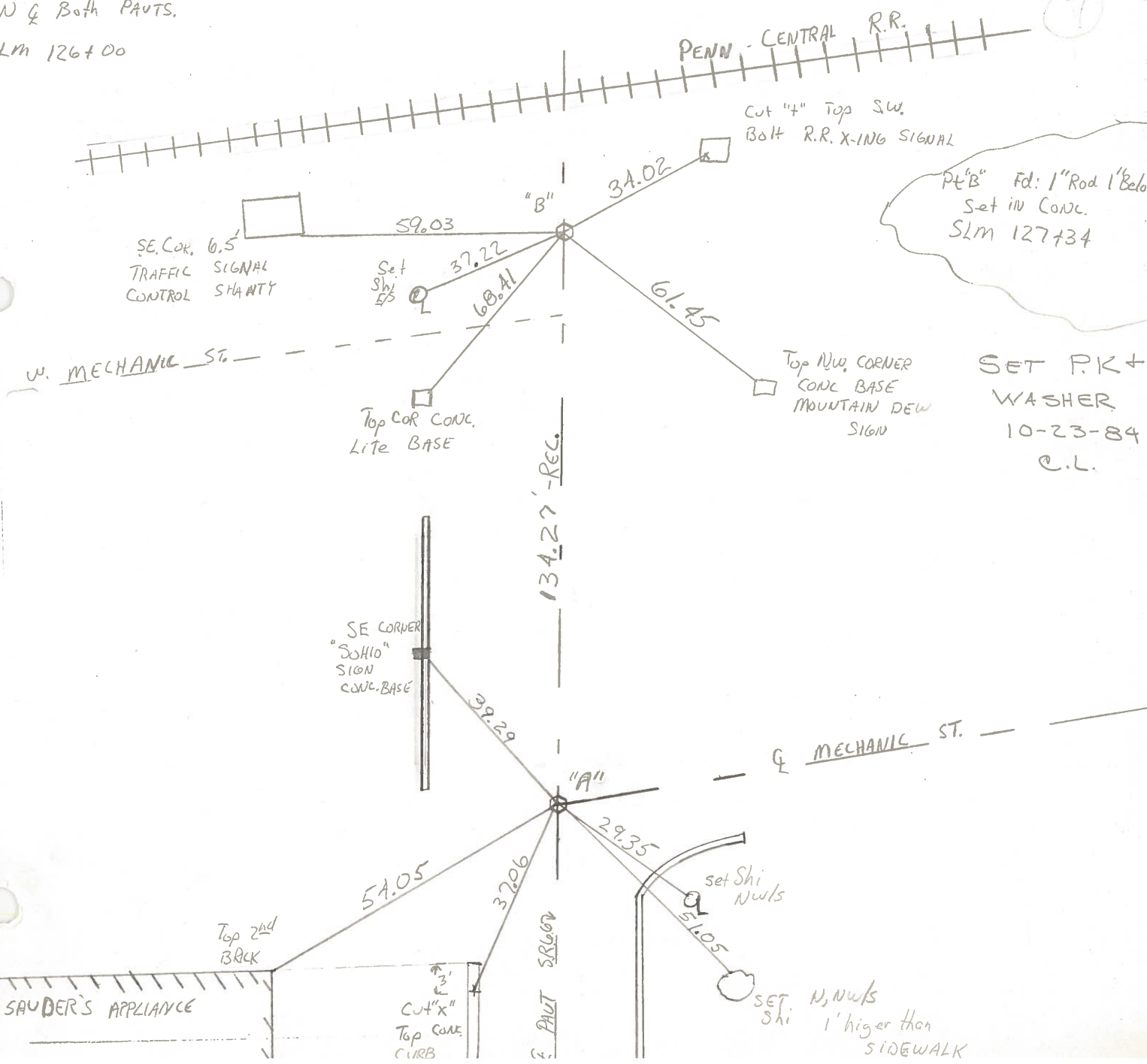
Weather PT CLOUDY

Temp. +74



PT. "A" Fd. 1" Rod IN CONC. 3" Below SURFACE ON & Both PARTS.

SLM 126+00



PERSONNEL TITLE PERSONNEL TITLE

Red Beach
W. Knape

COUNTY Fulton

DATE 21 Mar. 75

S. R. 66

WEATHER

SEC. ARCHBOLD

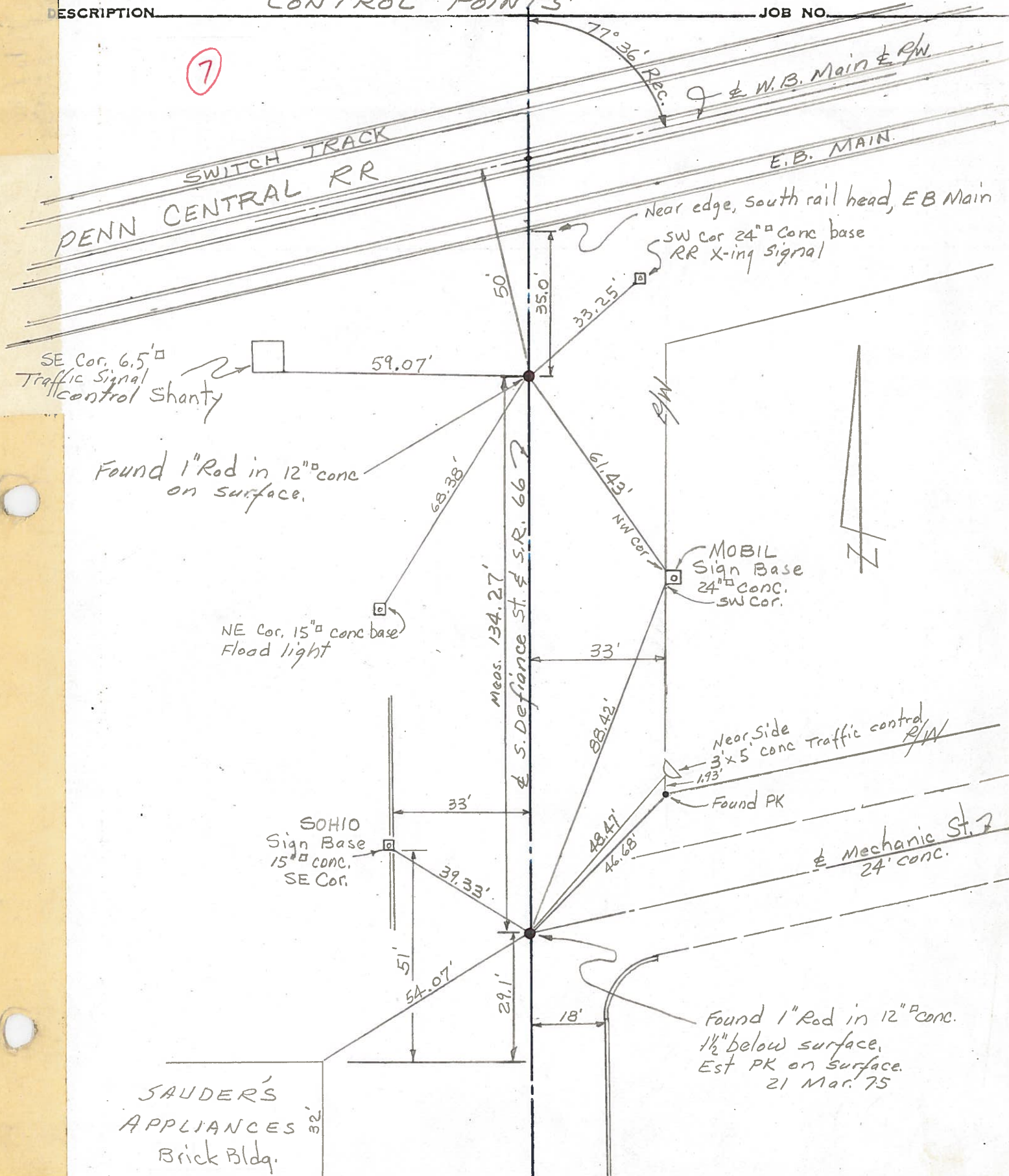
TEMP

DESCRIPTION

CONTROL POINTS

JOB NO.

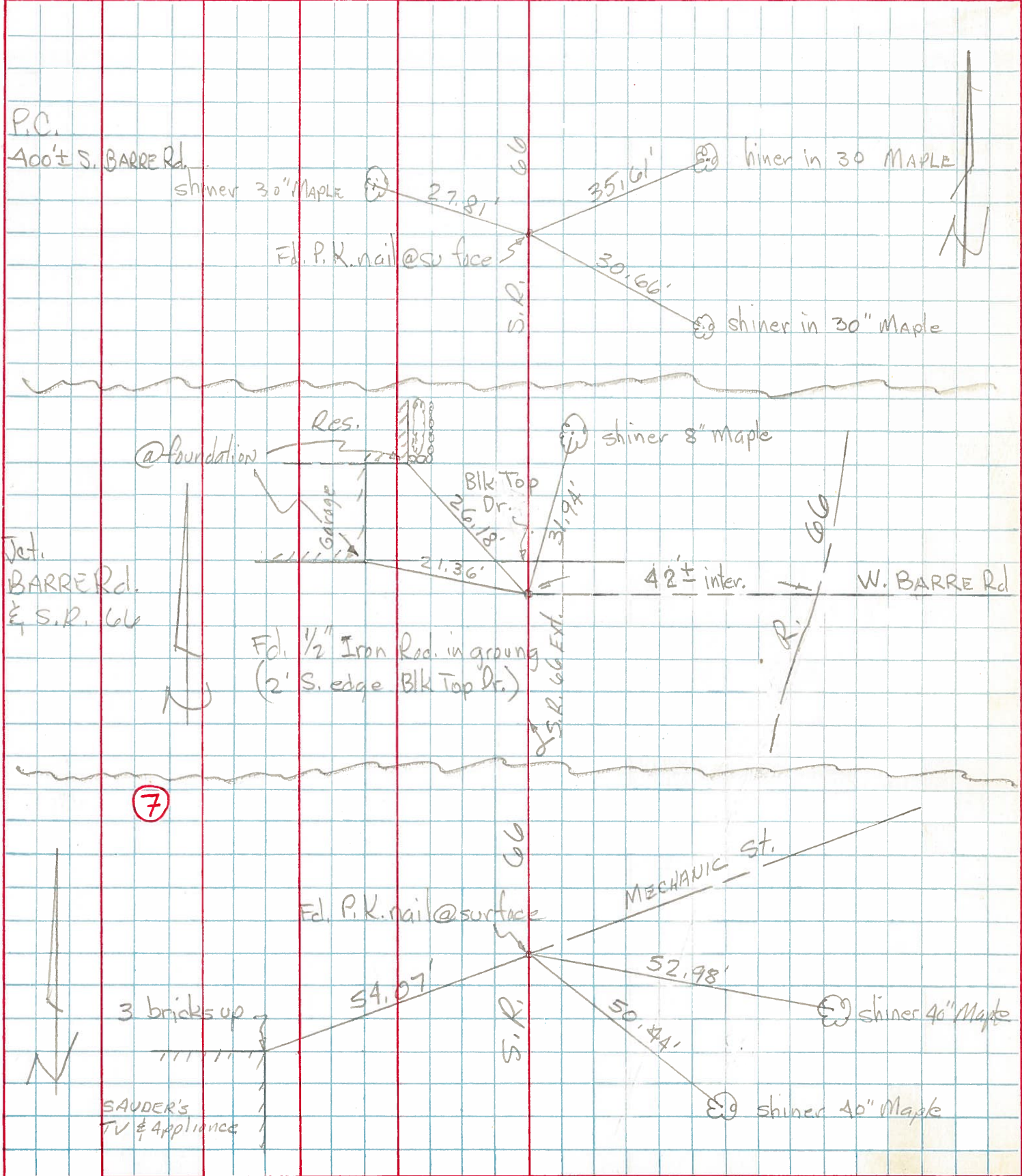
⑦



PERSONNEL	TITLE	PERSONNEL	TITLE
Tomsic			
Weuser			
Grandta			
Vanyo			

COUNTY Fulton DATE MAY 1, 1973
 S. R. 66 WEATHER _____
 SEC. ARCHBOLD O. TEMP. _____

DESCRIPTION _____ LEFT _____ CENTER LINE _____ RIGHT _____ JOB NO. _____



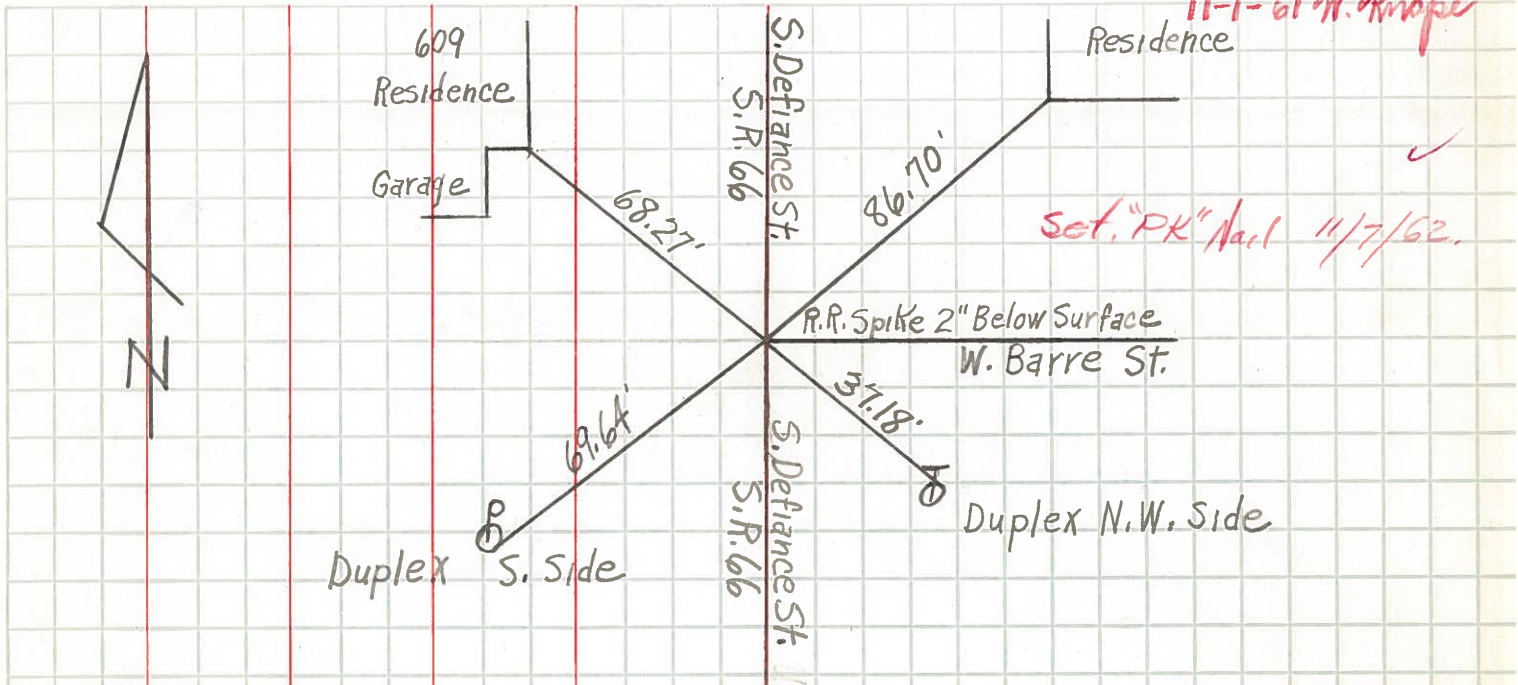
PERSONNEL	TITLE	PERSONNEL	TITLE
Knape			
Armbruster			
Gunter			
Mohler			

COUNTY Fulton DATE 11-2-60
 S. R. 66 WEATHER Cloudy
 SEC. _____ TEMP. 50°

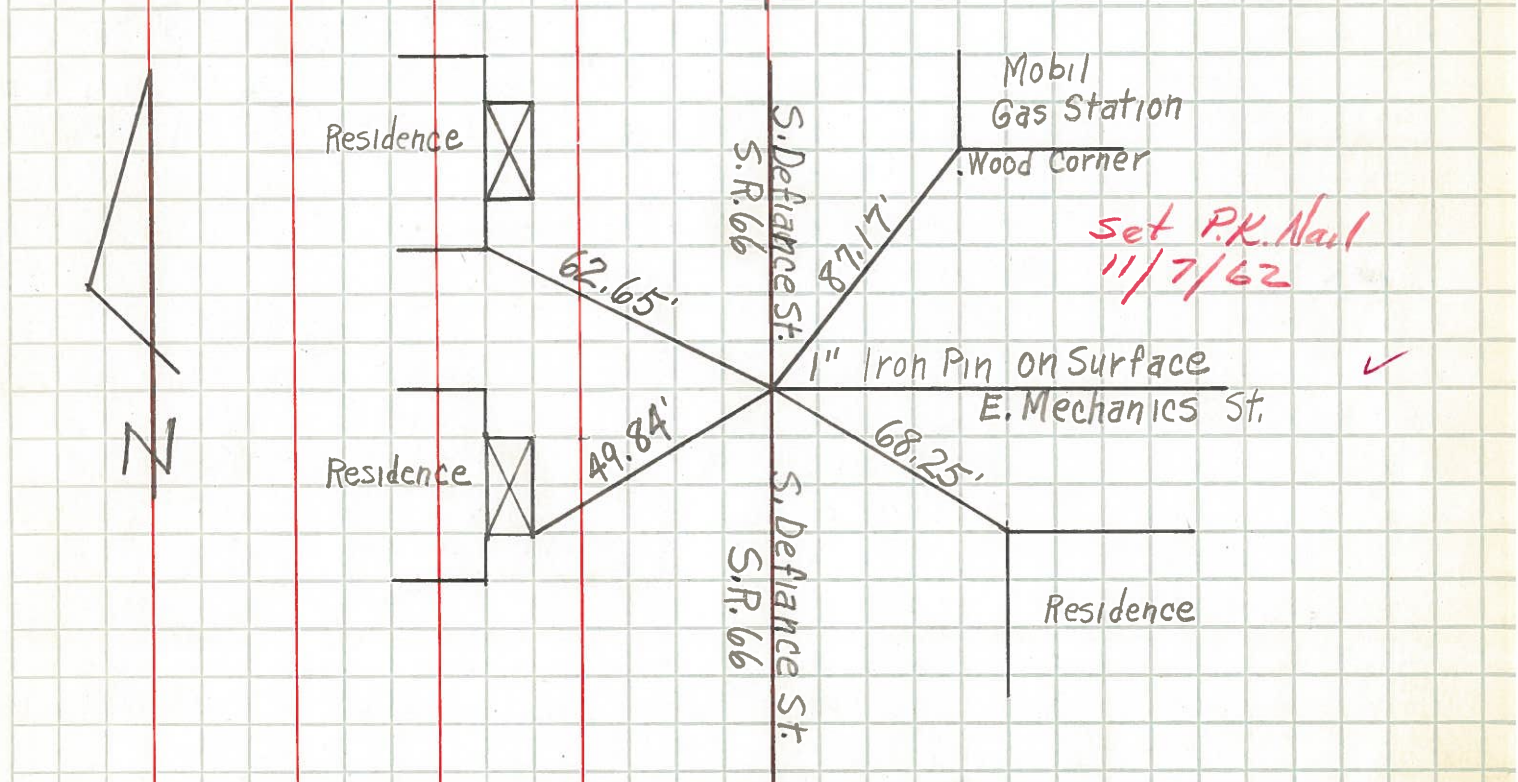
DESCRIPTION Archbold, S. Defiance St.

JOB NO. _____

LEFT CENTER LINE RIGHT



Intersection W. Barre St. and S. Defiance St. - Archbold, Ohio



Intersection E. Mechanics St. and S. Defiance St. - Archbold, Ohio