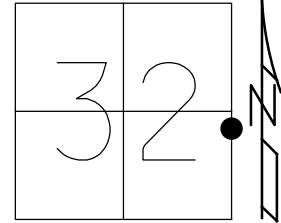


O.D.O.T. DISTRICT 2 SURVEY OFFICE (USE ONLY)

PERSONNEL _____ REFERENCE NO. 7 SHEET 23 OF 24
 NOTES LOEHRKE DATE 8/10/95 ROUTE SR 66
 H.C. ROUSOS WEATHER CLOUDY COUNTY FULTON
 R.C. CANTERBURY TEMP. 85° TOWNSHIP GERMAN
 DWG BY NIESE PID _____ SECTION 32
 T 7 N R 5 E

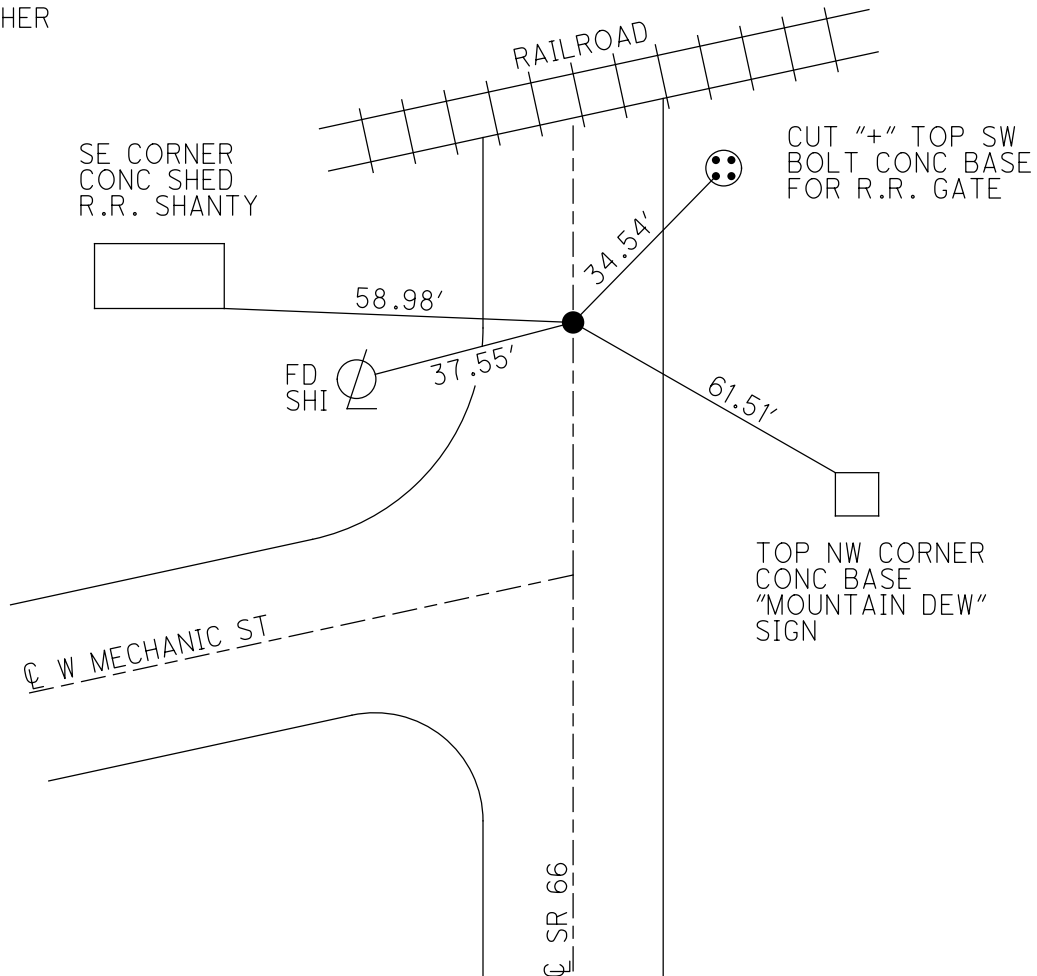
TYPE MONUMENT 1" IPIN IN CONC.
~~ON SURFACE~~ - BELOW 8"
 OFFSET Q PAVEMENT ON LT : RT
- TO - EDGE PAVEMENT
 STATION: 127+37



HORIZ.DATUM: _____ GEOID: _____
 GRID: NORTHING: _____ EASTING: _____

RECORD:
 FD 1" IPIN
 IN CONC.
 8/1/17, CL
 SET P.K./WASHER
 ABOVE IPIN
 FD 8" DOWN
 9/4/96

DIST 6C - 7 = 134.27'
 35.00' SOUTH OF SOUTH RAIL



O.D.O.T. DISTRICT 2 SURVEY OFFICE

PERSONNEL _____

REFERENCE NO. 7

SHEET 16 OF 24

NOTES LOCHRIKE

H.C. Rausos

R.C. CANTONBURY

DATE 8-10-95

WEATHER Humid

TEMP. +85

ROUTE S.R. 66

COUNTY FULTON

TOWNSHIP GERMAN

SECTION 32

T7 N R 5 E

Set P.K. / WASHER - 9-4-96

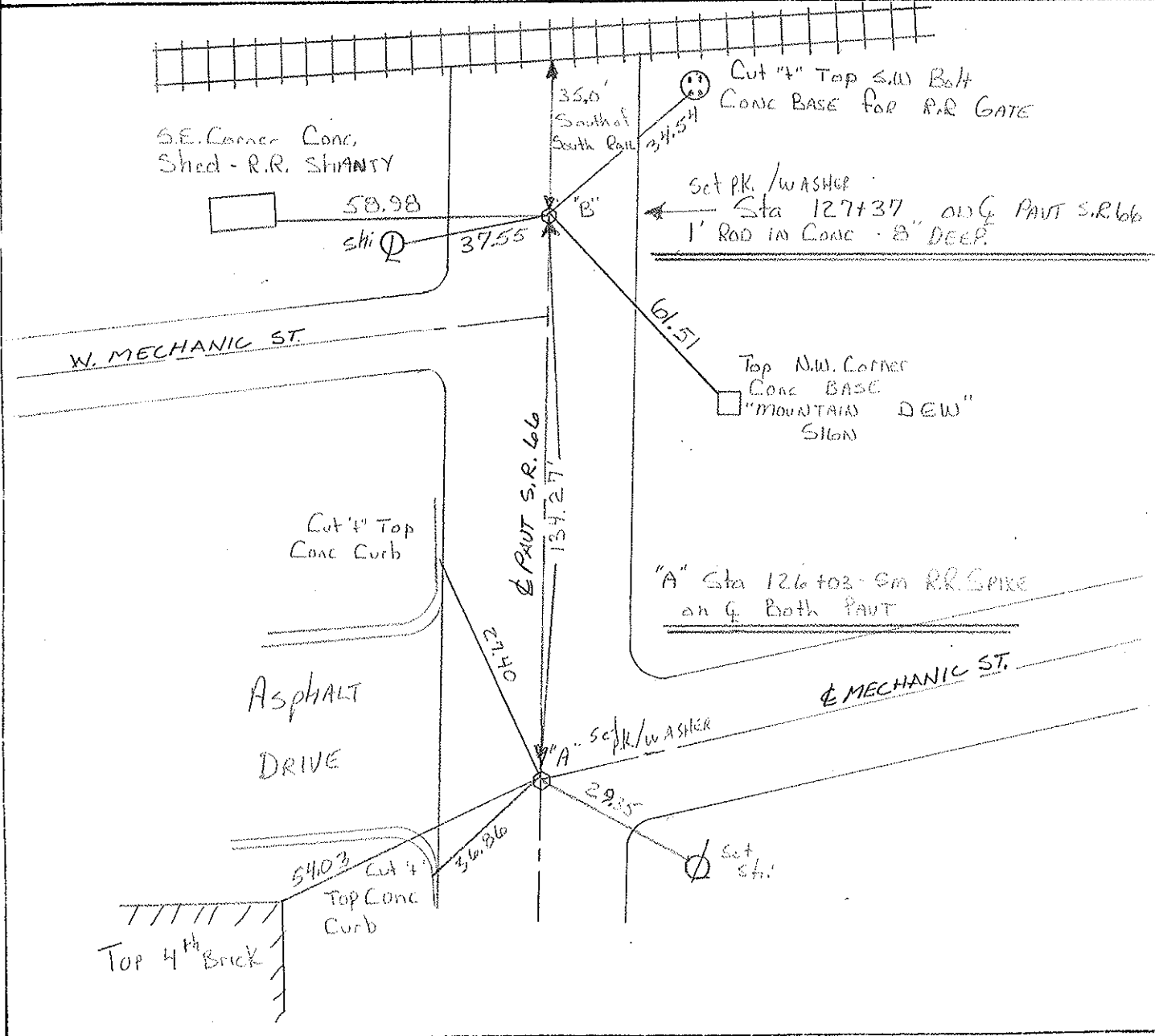
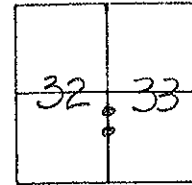
TYPE MONUMENT A = RR Spike B = 1" Iron Rod in Conc.

ON SURFACE - BELOW A = Yes B = 8" Deep

LEFT - C PAV'T. - RIGHT Yes

TO EDGE PAVEMENT

S.L.M. A = 126+03 B = 127+37



County FULTON S.R. 66

Township GERMAN

Section 32

T1N, R5E

Personnel HOFFMAN P

HAUSCHOLDER RC

BARNHISEL HC

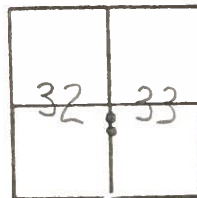
LOEHRKE JJ

7

Date 7-20-84

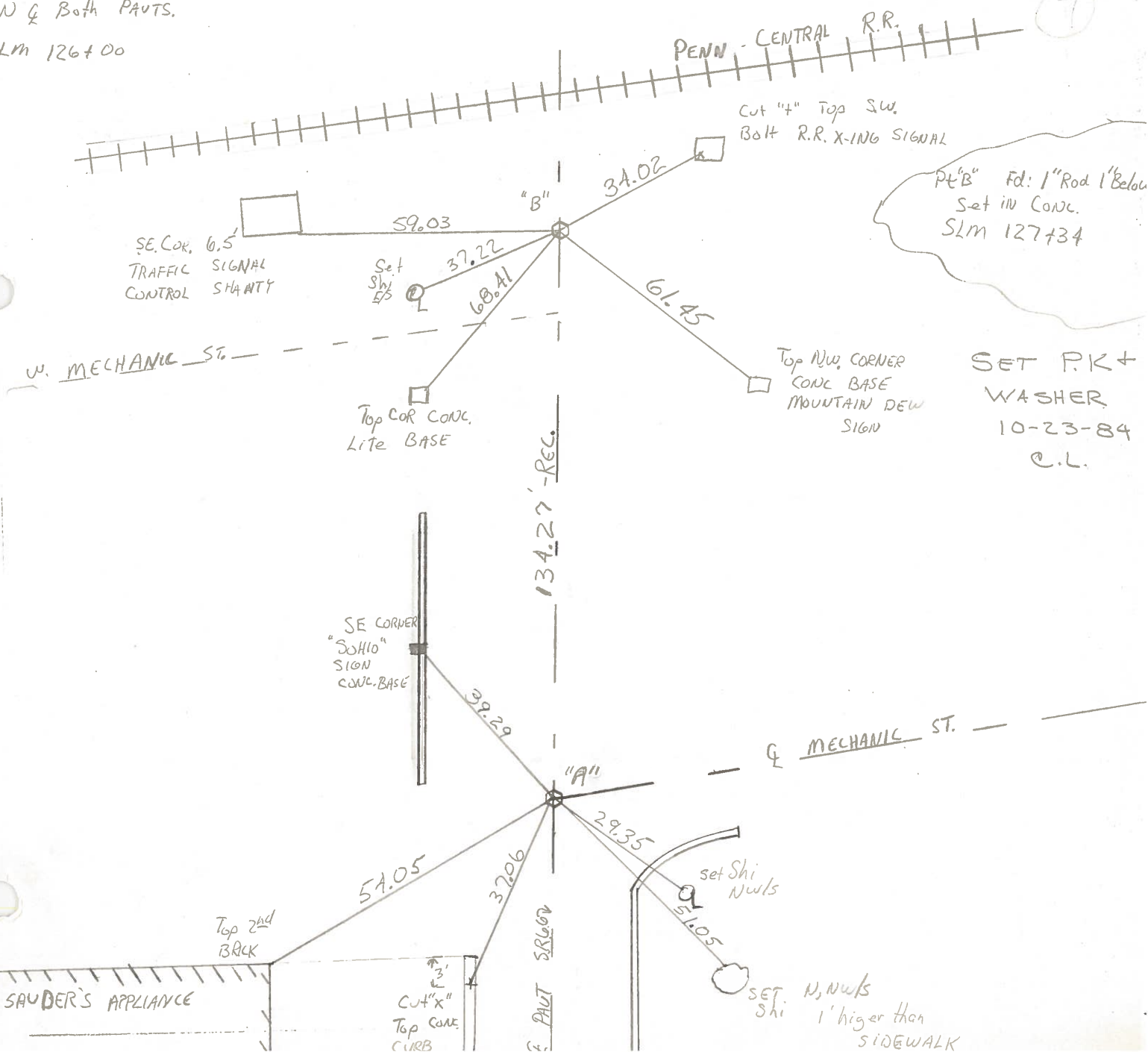
Weather PT CLOUDY

Temp. +74



PT. "A" Fd. 1" Rod IN CONC. 3" Below SURFACE ON & Both PARTS.

SLM 126+00



PT "B" Fd: 1" Rod 1' Below Set in CONC. SLM 127+34

SET P.K + WASHER 10-23-84 C.L.

W. MECHANIC ST.

PENN. CENTRAL R.R.

Cut "4" Top SW Bolt R.R. X-ING SIGNAL

SE COR. TRAFFIC SIGNAL CONTROL SHAFTY

Top COR CONC. Lite BASE

Top NW CORNER CONC BASE MOUNTAIN DEW SIGN

SE CORNER "30x10" SIGN CONC. BASE

W. MECHANIC ST.

SAUDER'S APPLIANCE

Top 2nd BRICK

Cut "X" Top CONC CURB

E. PAUL S. R. 604

set Shi Nwls

SET Shi N, Nwls 1' higher than SIDEWALK

PERSONNEL TITLE PERSONNEL TITLE

Red Beach
W. Knape

COUNTY Fulton

DATE 21 Mar. 75

S. R. 66

WEATHER

SEC. ARCHBOLD

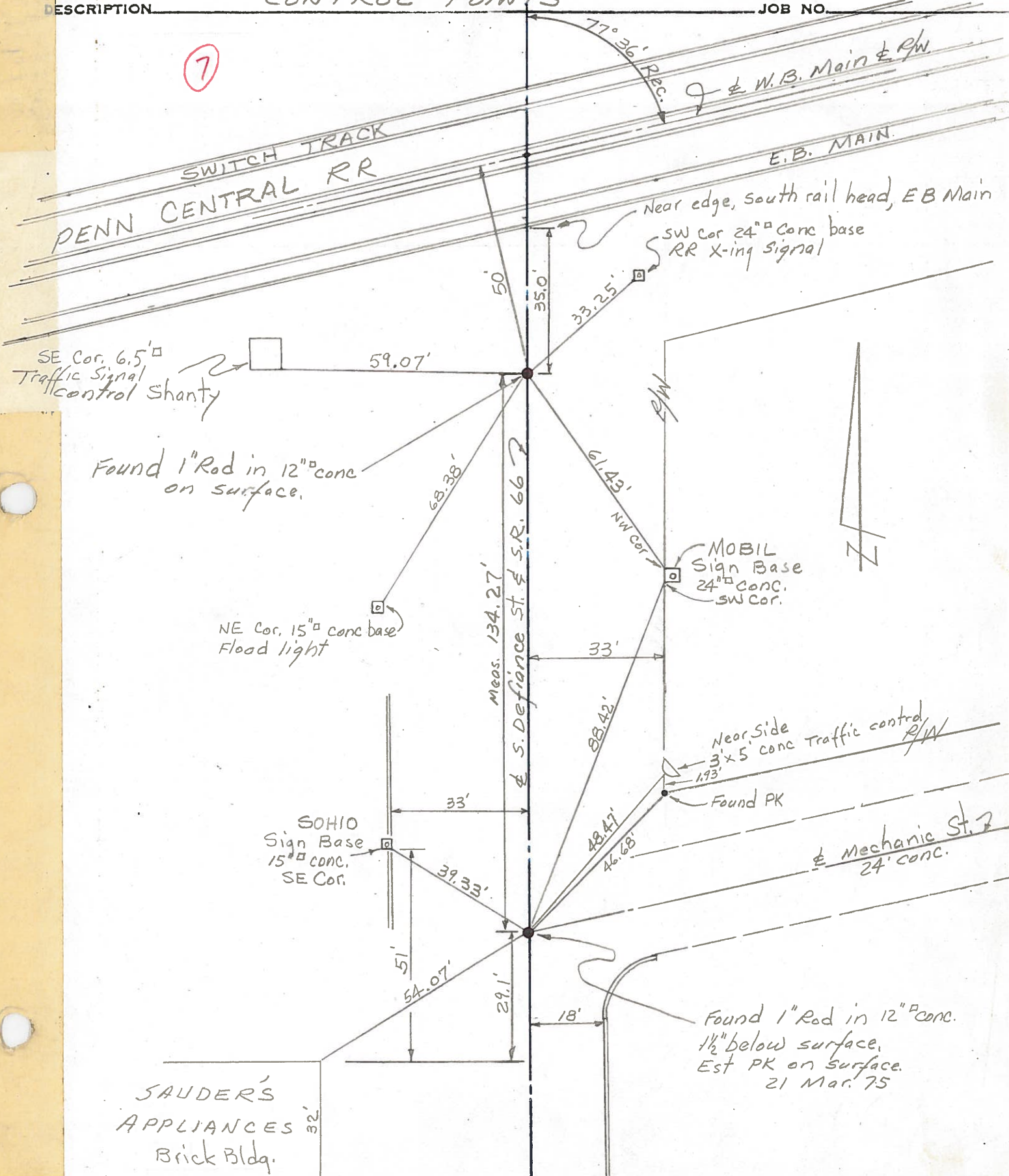
TEMP

DESCRIPTION

CONTROL POINTS

JOB NO.

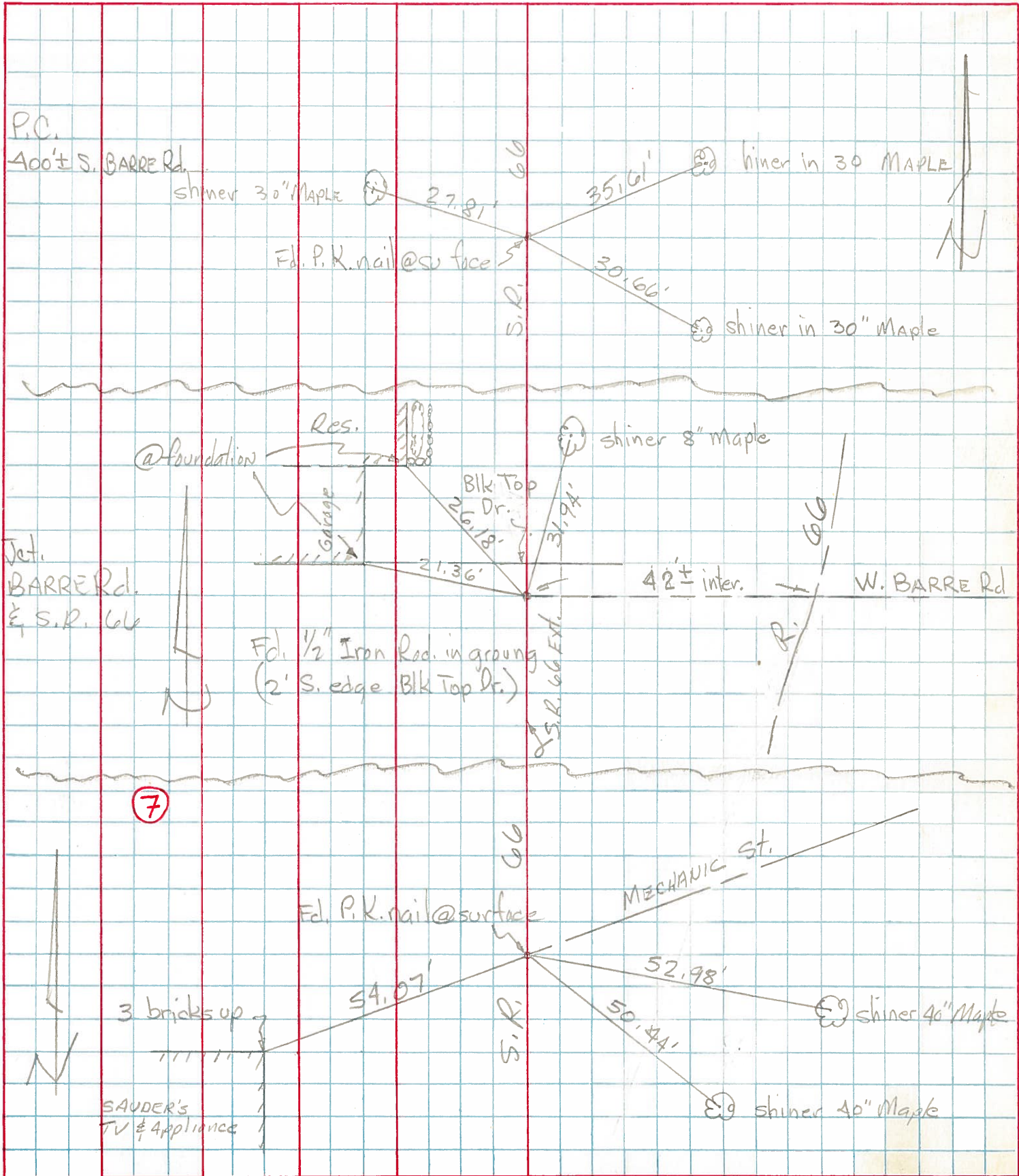
⑦



| PERSONNEL | TITLE | PERSONNEL | TITLE |
|-----------|-------|-----------|-------|
| Tomsic | | | |
| Weuser | | | |
| Grandta | | | |
| Vanyo | | | |

COUNTY Fulton DATE MAY 1, 1973
 S. R. 66 WEATHER _____
 SEC. ARCHBOLD O. TEMP. _____

DESCRIPTION _____ LEFT _____ CENTER LINE _____ RIGHT _____ JOB NO. _____



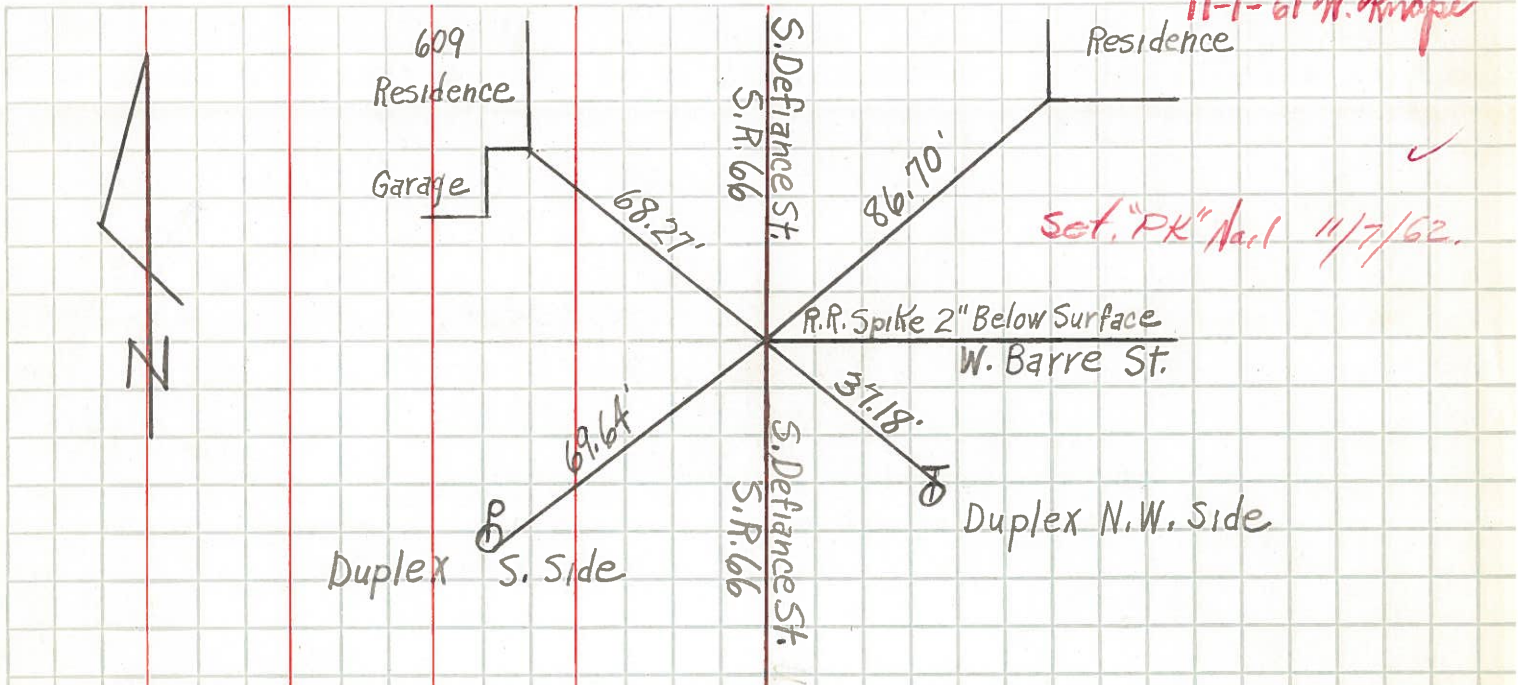
| PERSONNEL | TITLE | PERSONNEL | TITLE |
|------------|-------|-----------|-------|
| Knape | | | |
| Armbruster | | | |
| Gunter | | | |
| Mohler | | | |

COUNTY Fulton DATE 11-2-60
 S. R. 66 WEATHER Cloudy
 SEC. _____ TEMP. 50°

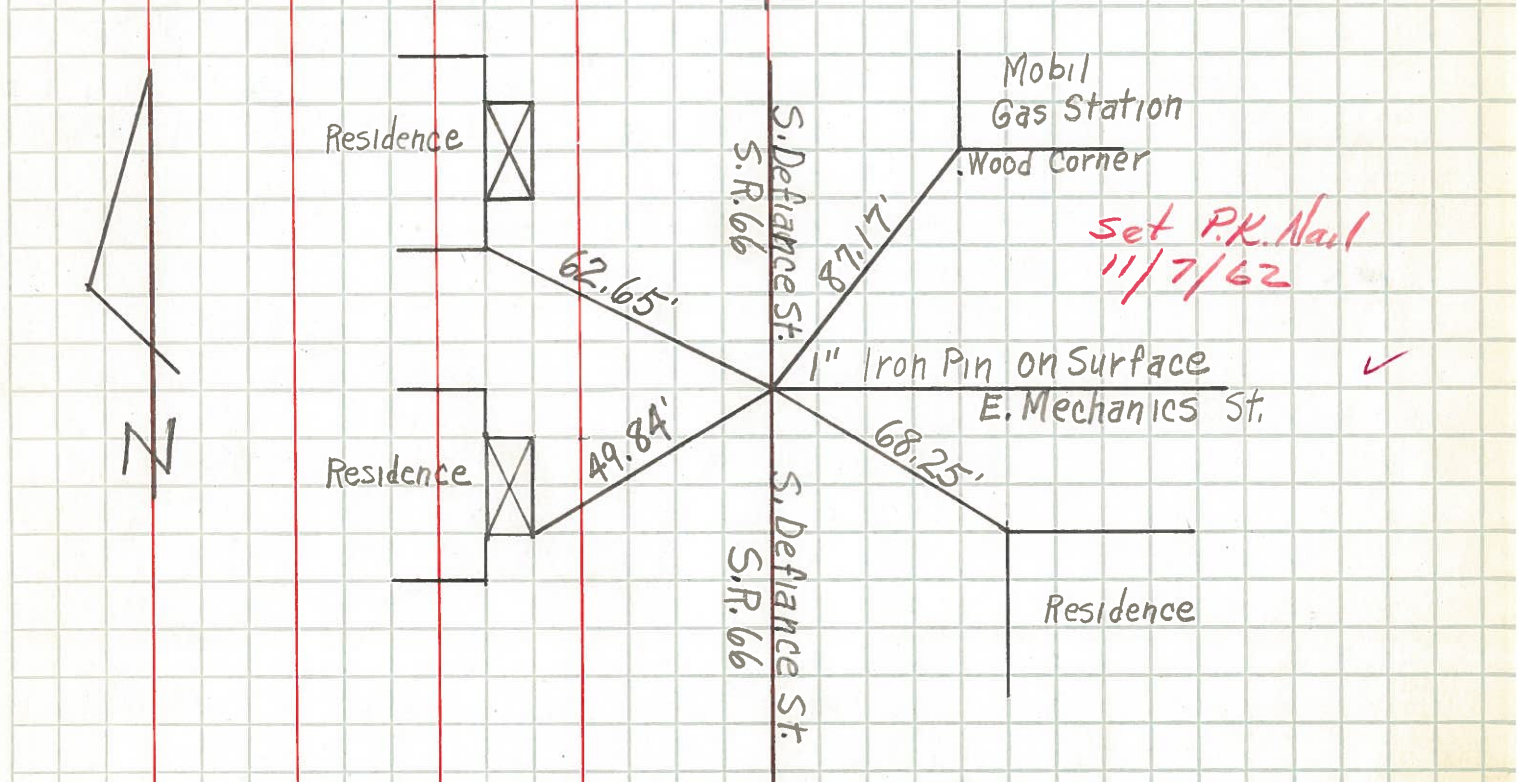
DESCRIPTION Archbold, S. Defiance St.

JOB NO. _____

LEFT CENTER LINE RIGHT



Intersection W. Barre St. and S. Defiance St. - Archbold, Ohio



Intersection E. Mechanics St. and S. Defiance St. - Archbold, Ohio