

O.D.O.T. DISTRICT 2 SURVEY OFFICE (USE ONLY)

PERSONNEL _____

REFERENCE NO. 7 A

SHEET 24 OF 24

NOTES LOEHRKE DATE 8/9/95

H.C. ROUSOS WEATHER RAIN

R.C. CANTERBURY TEMP. 72°

ROUTE SR 66

COUNTY FULTON

TOWNSHIP GERMAN

SECTION 32

DWG BY NIESE PID _____

T 7 N R 5 E

TYPE MONUMENT ON MANHOLE LID

ON SURFACE - ~~BELOW~~ ON

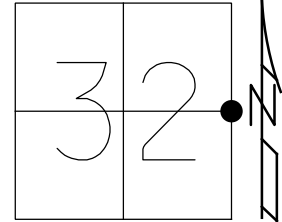
OFFSET ☉ PAVEMENT ON LT : RT

31.1' TO EAST ~~EDGE PAVEMENT~~ FACE OF CURB

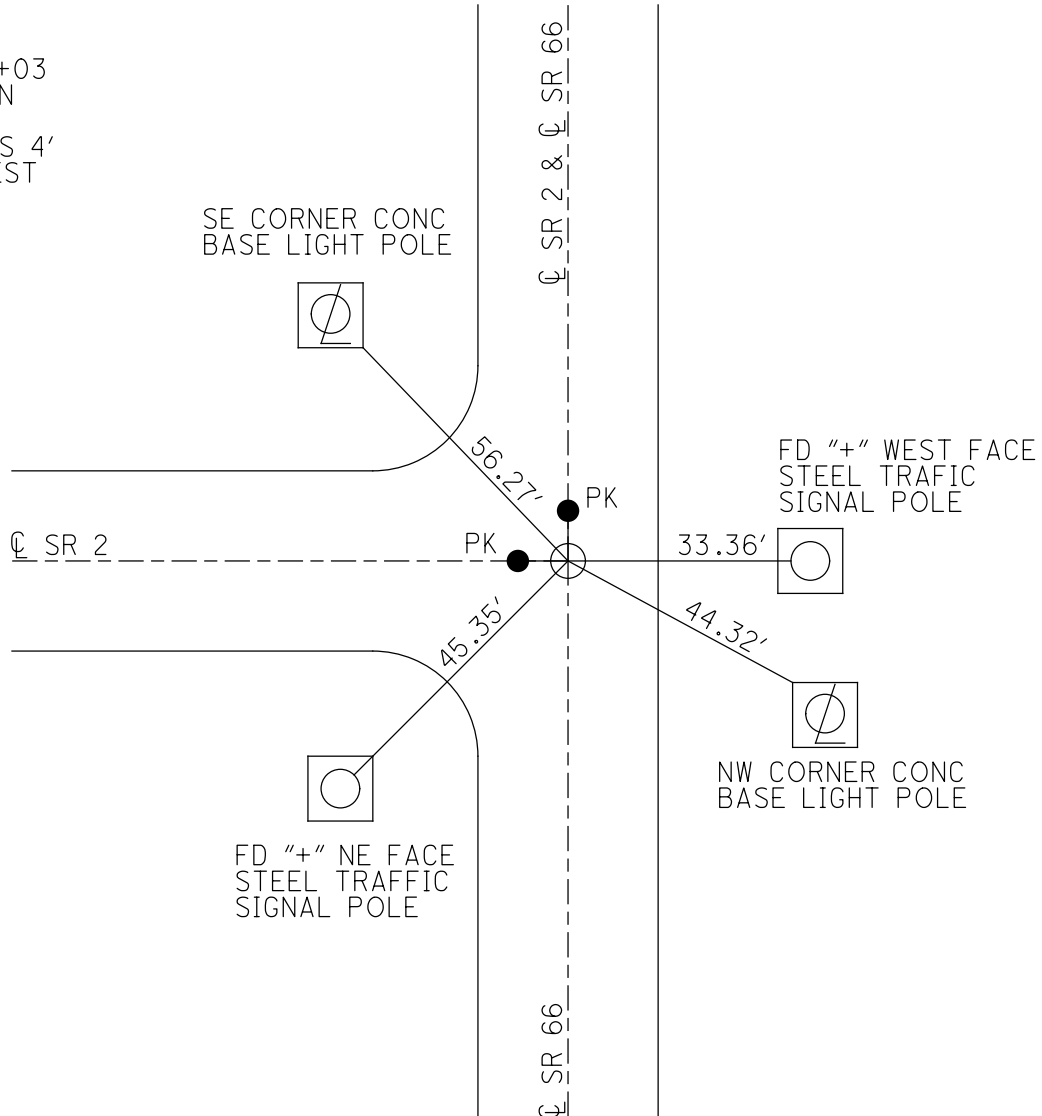
STATION: 130+63

HORZ. DATUM: _____ GEOID: _____

GRID: NORTHING: _____ EASTING: _____



RECORD:
SR 2 STA 204+03
TIES CROSS ON
MH LID
SET P.K. NAILS 4'
NORTH AND WEST
8/9/95, CL



O.D.O.T. DISTRICT 2 SURVEY OFFICE (USE ONLY)

PERSONNEL _____ REFERENCE NO. 7 B SHEET 1 OF 8

NOTES LOEHRKE DATE 8/9/95 ROUTE SR 66, SR 2

H.C. ROUSOS WEATHER CLOUDY COUNTY FULTON

R.C. CANTERBURY TEMP. 77° TOWNSHIP GERMAN

SECTION 32

T 7 N R 5 E

TYPE MONUMENT 1" IPIN

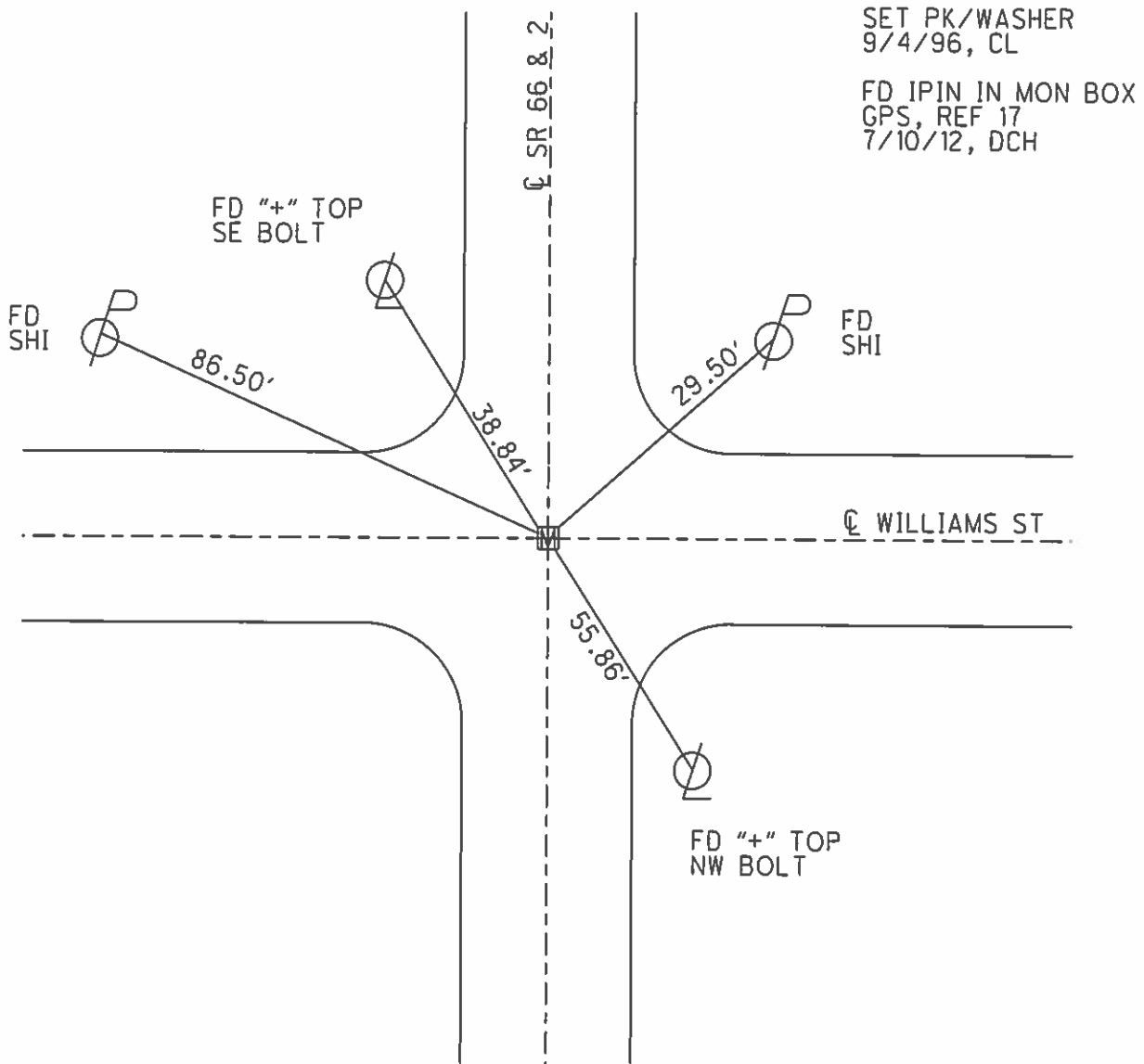
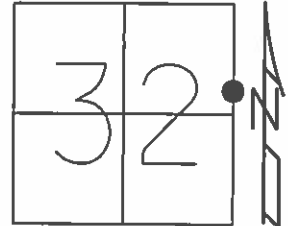
~~ON SURFACE~~ - BELOW 1/2"

LEFT - ☉ PAV'T - RIGHT ON

- TO - EDGE PAVEMENT

S.L.M. 211+66

Grid: Northing: - Easting: -



O.D.O.T. DISTRICT 2 SURVEY OFFICE

PERSONNEL

REFERENCE NO. 7-B

SHEET 18 OF 24

NOTES LOEHRKE

H.C. Rousar

R.C. CANTERBURY

DATE 8-9-95

WEATHER CLOUDY

TEMP. +77°F

ROUTE SR 66 FSR 2

COUNTY FULTON

TOWNSHIP GERMAN

SECTION 32

Set P.K. / WASHER
9-4-96

T N R S E

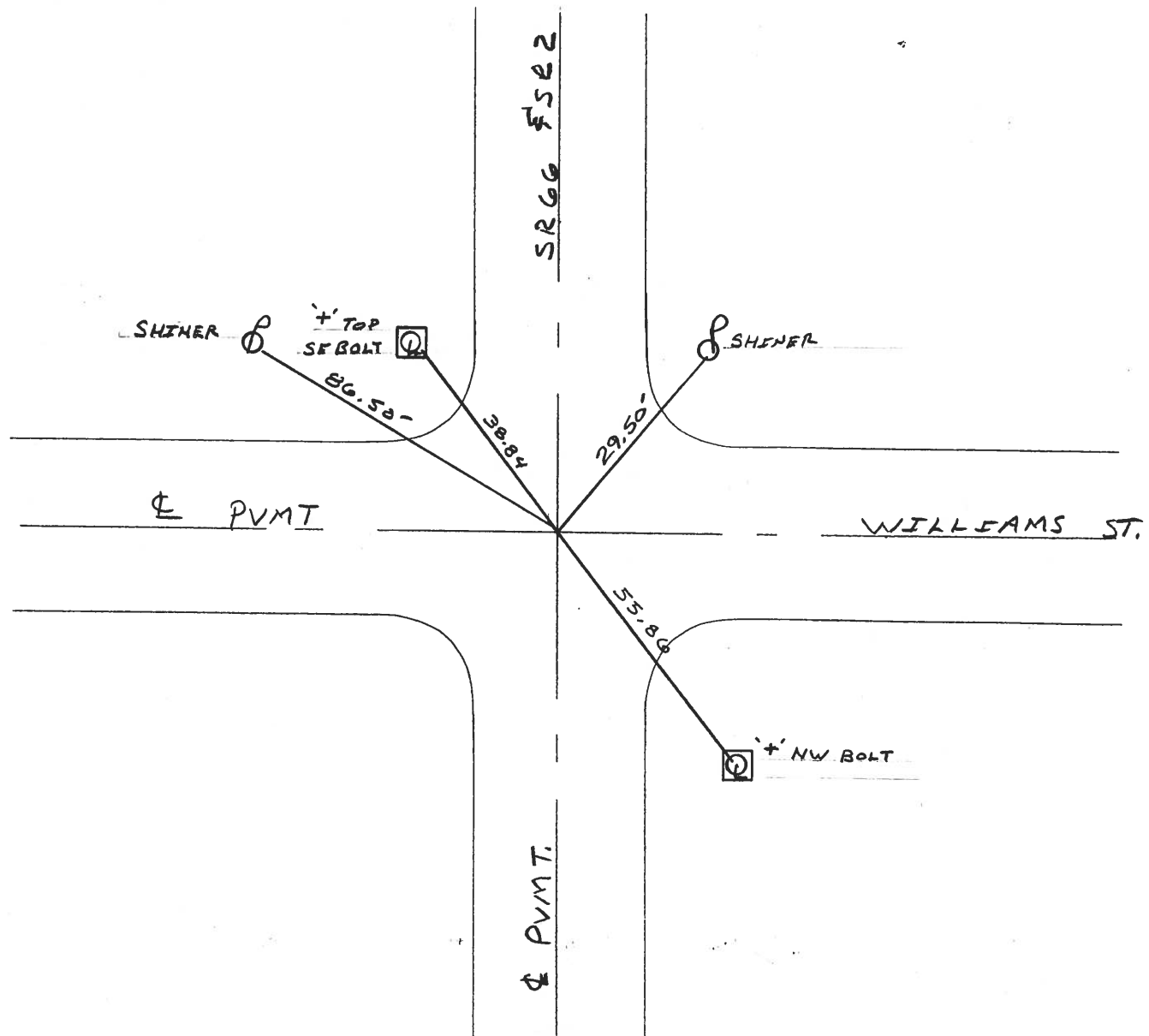
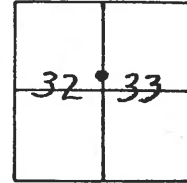
TYPE MONUMENT 1" I-ROD

~~ON SURFACE~~ - BELOW 1/2" BELOW

~~LEFT - & PAV'T. - RIGHT &~~

TO EDGE PAVEMENT

S.L.M. 211-66



County FULTON S.R. 66

Date August 1, 1984

Township GERMAN

Weather Humid

Section 32

Temp. ± 86

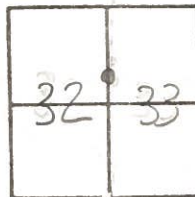
T7N, R5E

Personnel Barnhisel

Householder

Ensign

7B



Fd 1" Iron Rod @ Surface

@ Williams St

@ SE 66

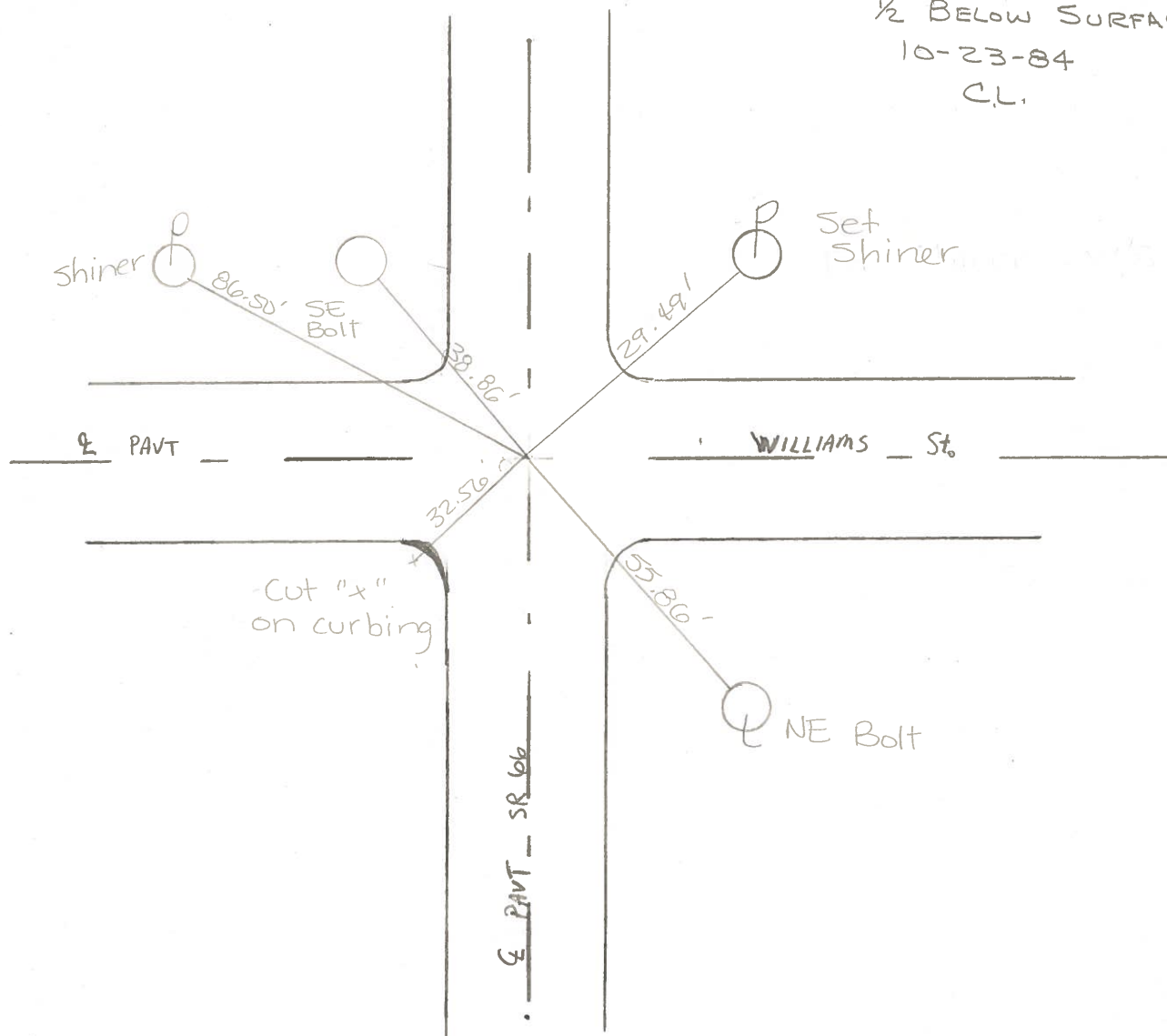
Sta 211+39

EXPOSED ROD

1/2" BELOW SURFACE

10-23-84

CL.



PERSONNEL	TITLE	PERSONNEL	TITLE
Tomsic			
Weuser			
Granata			
Vanyo			

COUNTY Fulton DATE MAY 2, 1973
 S. R. 66 WEATHER _____
 SEC. ARCHBOLD O. TEMP. _____

DESCRIPTION _____ LEFT _____ CENTER LINE _____ RIGHT _____ JOB NO. _____

