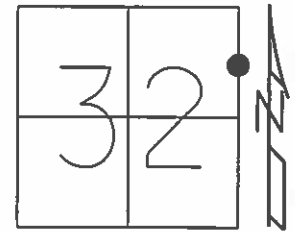


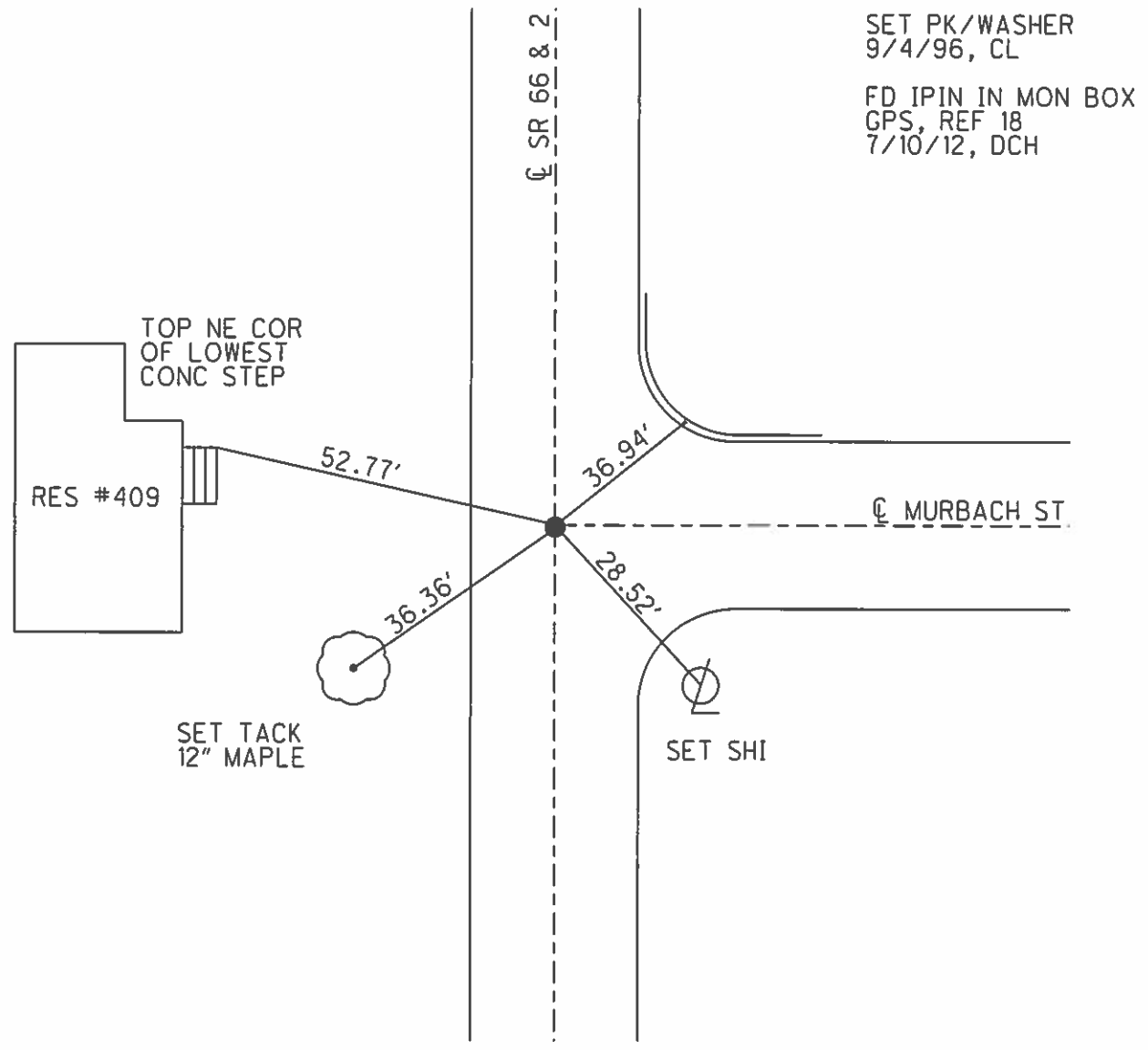
O.D.O.T. DISTRICT 2 SURVEY OFFICE (USE ONLY)

PERSONNEL _____ REFERENCE NO. 7 C SHEET 2 OF 8
 NOTES LOEHRKE DATE 8/9/95 ROUTE SR 66, SR 2
 H.C. ROUSOS WEATHER CLOUDY COUNTY FULTON
 R.C. CANTERBURY TEMP. 77° TOWNSHIP GERMAN
 _____ SECTION 32
 _____ T 7 N R 5 E

TYPE MONUMENT PK NAIL
 ON SURFACE - ~~BELOW~~ ON
 LEFT - ☉ PAV'T - RIGHT ON
13.7' TO LT EDGE PAVEMENT
 S.L.M. 214+90



Grid: Northing: _____ Easting: _____



O.D.O.T. DISTRICT 2 SURVEY OFFICE

PERSONNEL

REFERENCE NO. 7-C

SHEET 19 OF 24

NOTES LOEHRKE

H.C. ROUSSE

DATE 8-9-95

ROUTE SR 66 FSR 2

R.C. CANTERBURY

WEATHER CLOUDY

COUNTY FULTON

TEMP. +77°F

TOWNSHIP GERMAN

SECTION 32

T 7 N R 5 E

TYPE MONUMENT PK NAIL

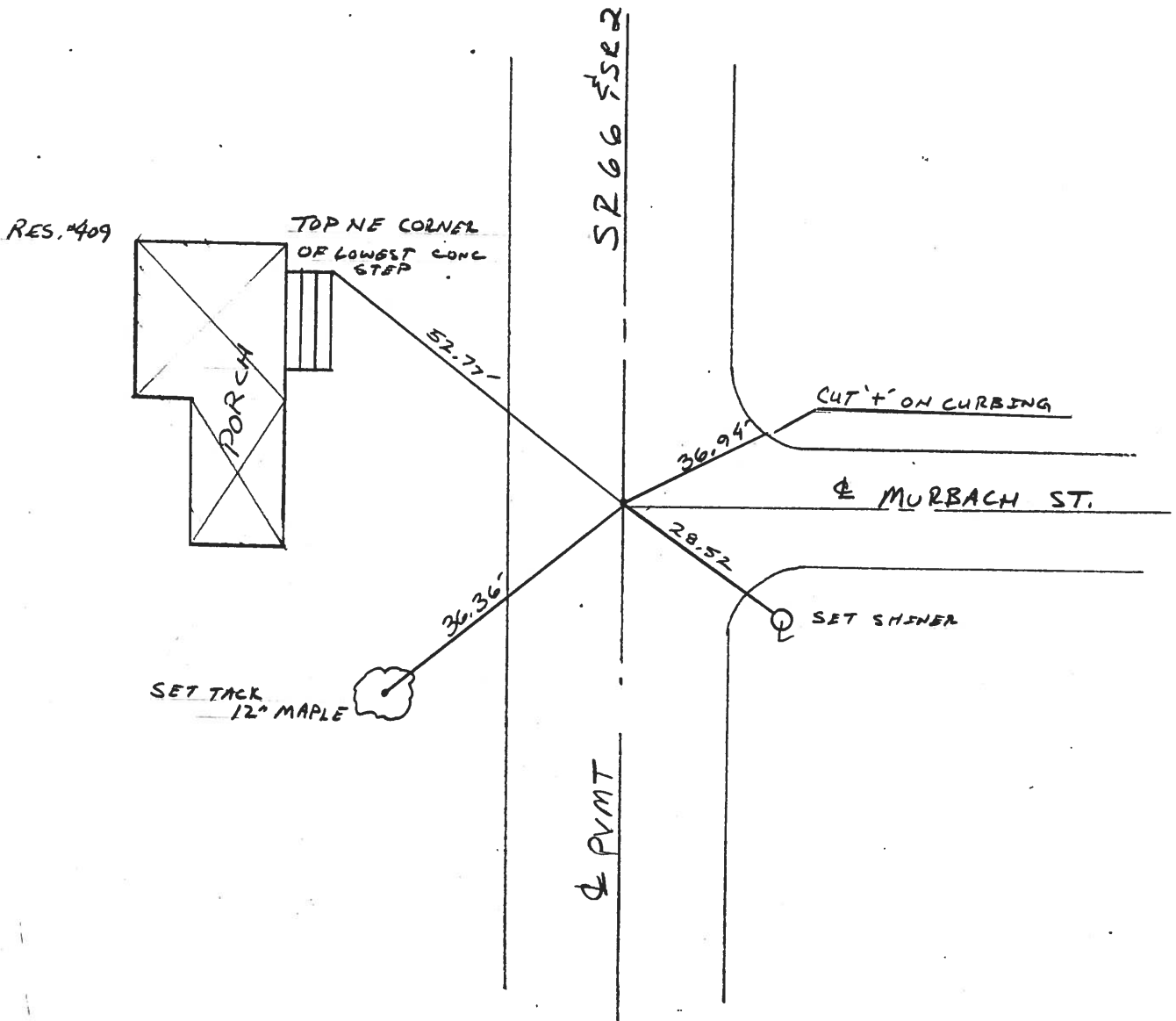
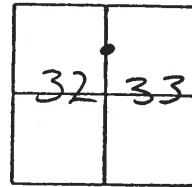
Set P.K. / WASHER
9-4-96

ON SURFACE - ~~BELOW~~ ON SURFACE

LEFT = ☉ PAV'T. - RIGHT ☉

13.0' TO LT EDGE PAVEMENT

S.L.M. 214+90



County FULTON S.R. 66

Township GERMAN

Section 32

T1N, R5E

Personnel Barnhiser

Householder

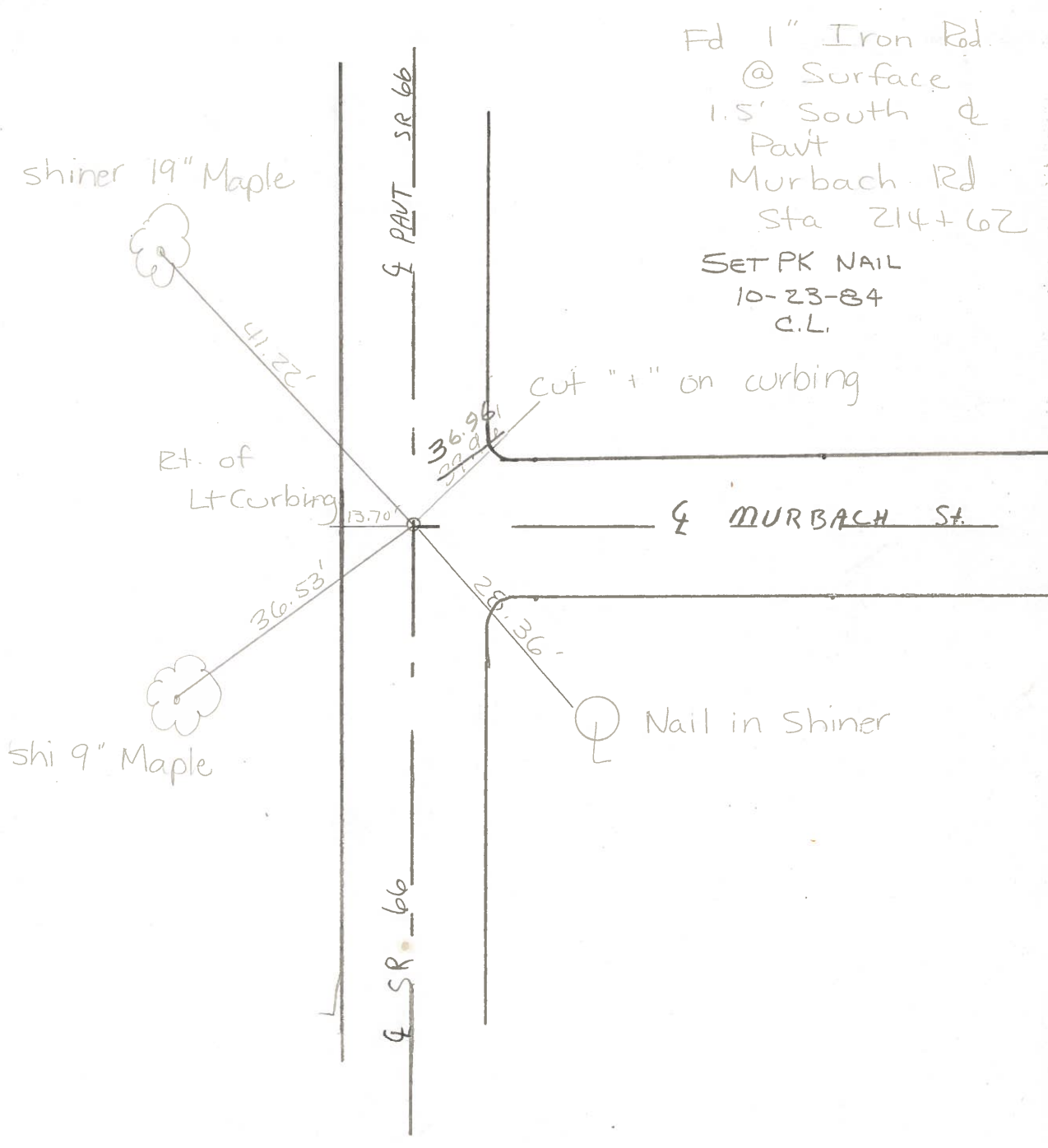
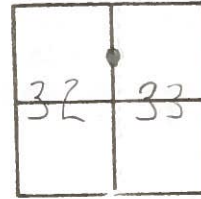
Ensign

7C

Date August 1, 1984

Weather Humid

Temp. ± 86



PERSONNEL	TITLE	PERSONNEL	TITLE	COUNTY	DATE
Tomsic				Fulton	May 2, 1973
Weuser				S. R. 66	WEATHER
Granata				SEC. ARCHBOLD O.	TEMP.
Vanyo					

DESCRIPTION LEFT CENTER LINE RIGHT JOB NO.

