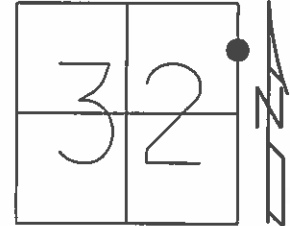


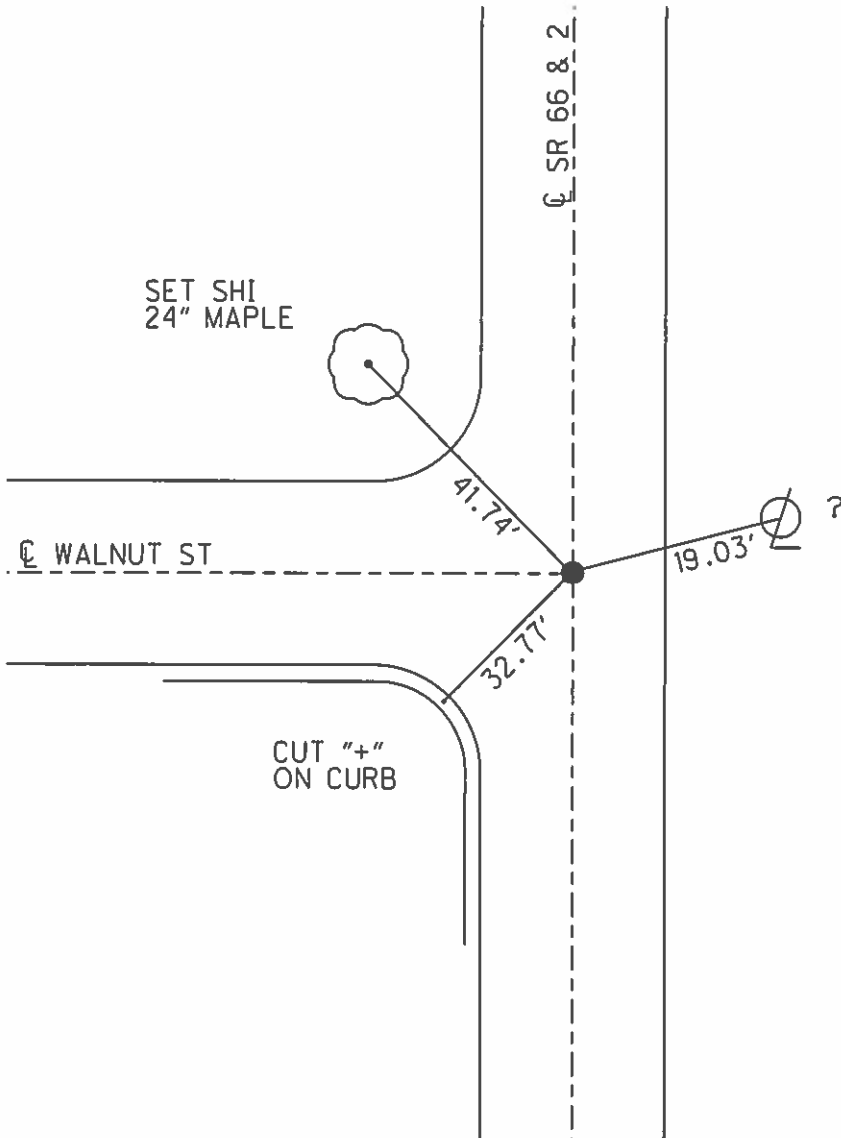
O.D.O.T. DISTRICT 2 SURVEY OFFICE (USE ONLY)

PERSONNEL _____ REFERENCE NO. 7 D SHEET 3 OF 8
 NOTES LOEHRKE DATE 8/9/95 ROUTE SR 66, SR 2
 H.C. ROUSOS WEATHER CLOUDY COUNTY FULTON
 R.C. CANTERBURY TEMP. 77° TOWNSHIP GERMAN
 _____ SECTION 32
 _____ T 7 N R 5 E

TYPE MONUMENT PK/WASHER
 ON SURFACE - ~~BELOW~~ ON
 LEFT - ☉ PAV'T - RIGHT ON
13.9' TO E EDGE PAVEMENT
 S.L.M. 217+47



Grid: Northing: _____ Easting: _____



SET PK/WASHER
 9/4/96, CL
 FD IPIN IN MON BOX
 GPS, REF 19
 7/10/12, DCH

O.D.O.T. DISTRICT 2 SURVEY OFFICE

PERSONNEL

REFERENCE NO. 7-D

SHEET 20 OF 24

NOTES LOENRIKE

H.C. ROUSAS

R.C. CANTERBURY

DATE 8-9-95

WEATHER CLOUDY

TEMP. +77°F

ROUTE SR 66 & SR 2

COUNTY FULTON

TOWNSHIP GERMAN

SECTION 32

T. 2 N R. 5 E

Reset

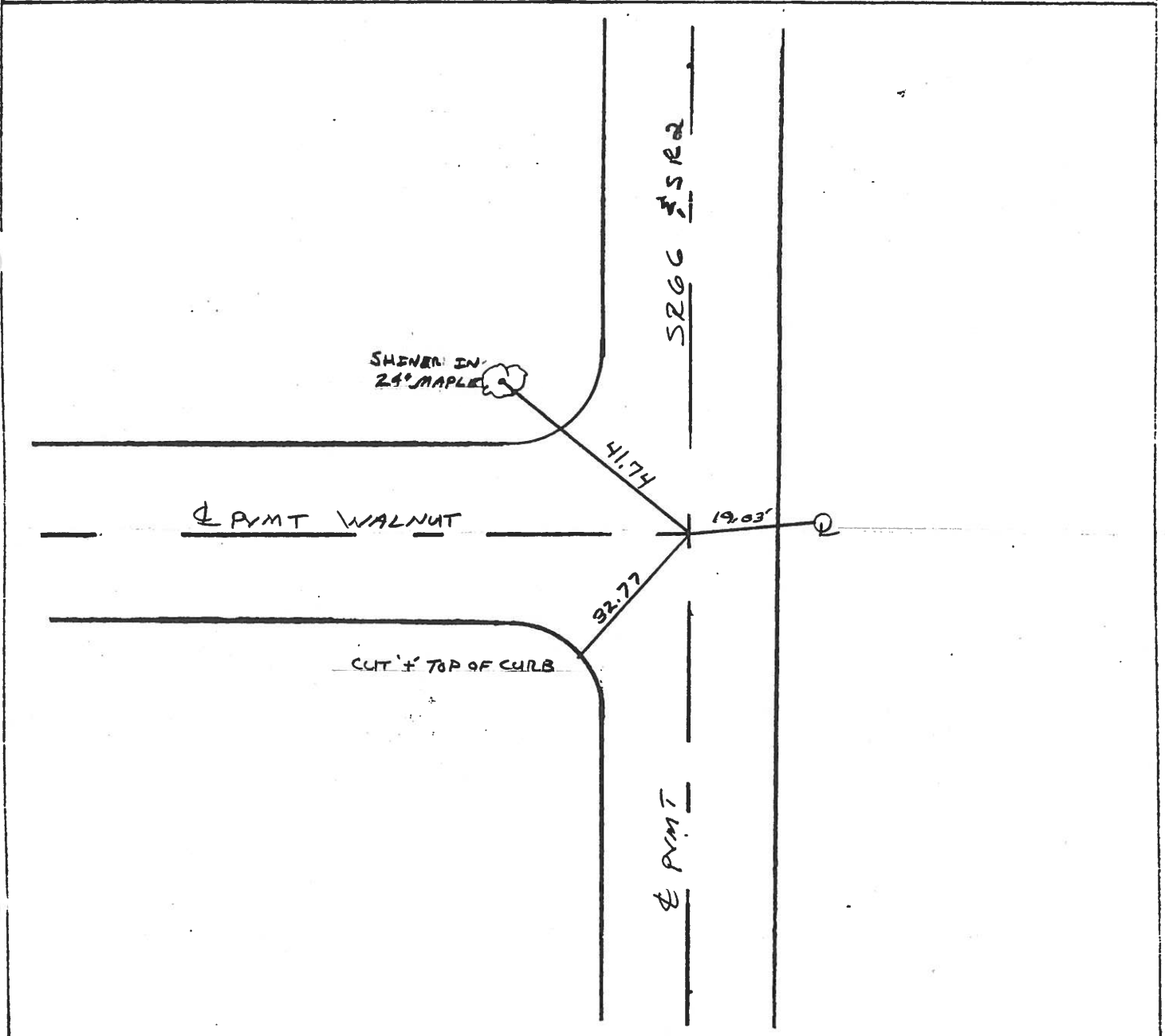
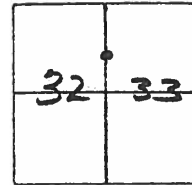
TYPE MONUMENT PK/WASHER 9-4-96

ON SURFACE - ~~BELOW~~ ON SURFACE

LEFT - ☉ PAV'T. - RIGHT ☉ SR 66 + WALNUT

13.9 TO E EDGE PAVEMENT (CURB)

S.L.M. 217+47



County FULTON S.R. 66

Township GERMAN

Section 32

T7N, R5E

Personnel Barnhisel

Householder

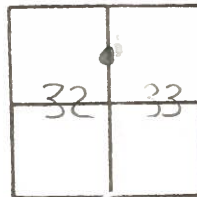
Ensign

7D

Date August 1, 1984

Weather Humid

Temp. ± 86



Fd 1" Iron Rd @ Surface
2' North & Pav't Walnut St.

217+18

SET PK NAIL+WASHER
10-23-84
C.L.

Set Shiner
24" Maple



41.75'

Fd Shiner
30" Maple



27.90'

13.9' Lt of
Rt Edge

PAVT WALNUT

19.50'



Set
Shiner
20"
Maple



43.59'

Cut "4"
on
Curbing

35.61'

PAVT SR 66

PERSONNEL	TITLE	PERSONNEL	TITLE	COUNTY	DATE	WEATHER	TEMP.
Tomsic				Fulton	May 2, 1973		
Weuser				S. R. 66			
Granada				SEC. ARCHBOLD O.			
Vanyo							

DESCRIPTION _____ LEFT _____ CENTER LINE _____ RIGHT _____ JOB NO. _____

