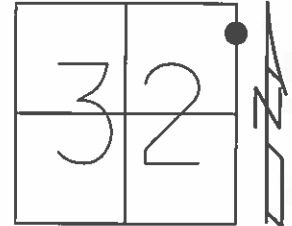


O.D.O.T. DISTRICT 2 SURVEY OFFICE (USE ONLY)

PERSONNEL \_\_\_\_\_ REFERENCE NO. 7 E SHEET 4 OF 8  
 NOTES LOEHRKE DATE 8/9/95 ROUTE SR 66, SR 2  
 H.C. ROUSOS WEATHER CLOUDY COUNTY FULTON  
 R.C. CANTERBURY TEMP. 77° TOWNSHIP GERMAN  
 \_\_\_\_\_ SECTION 32  
 \_\_\_\_\_ T 7 N R 5 E

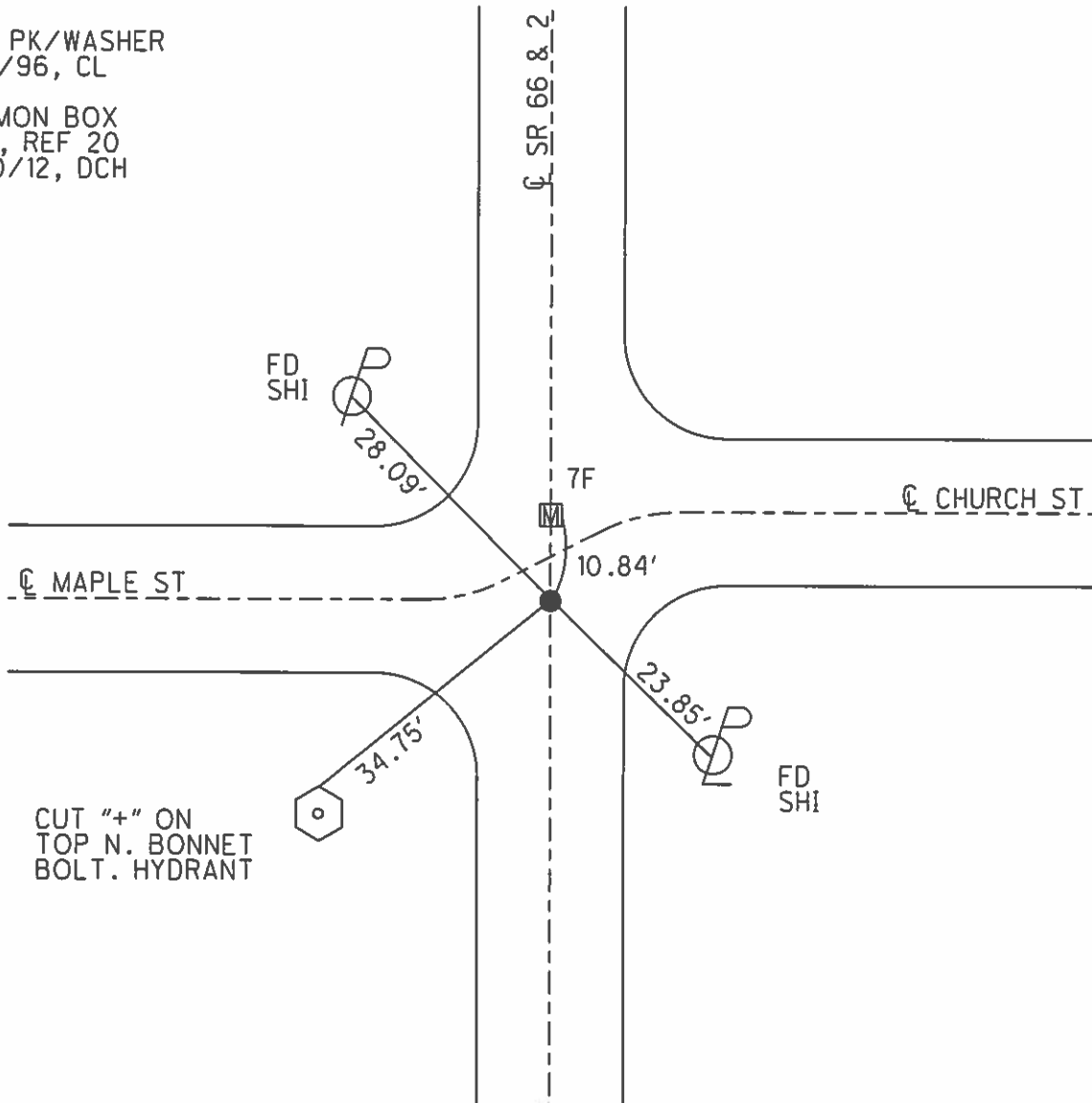
TYPE MONUMENT 1" IPIN  
 ON SURFACE - ~~BELOW~~ 1"  
 LEFT - ☉ PAV'T - RIGHT ON  
\_\_\_\_\_ TO \_\_\_\_\_ EDGE PAVEMENT  
 S.L.M. 225+35



Grid: Northing: 683040.655 Easting: 1473938.540

SET PK/WASHER  
 9/4/96, CL

FD MON BOX  
 GPS, REF 20  
 7/10/12, DCH



O.D.O.T. DISTRICT 2 SURVEY OFFICE

PERSONNEL

REFERENCE NO. 7-5

SHEET 21 OF 24

NOTES LOHRKE

H.C. ROUSOS

R.C. CANTERBURY

DATE 8-9-95

WEATHER CLOUDY

TEMP. +75°F

ROUTE S.R. # 2 FSR66

COUNTY FULTON

TOWNSHIP GERMAN

SECTION 32

T 7 N R 5 E

Set P.K. / WASHER

TYPE MONUMENT 1" IRON ROD

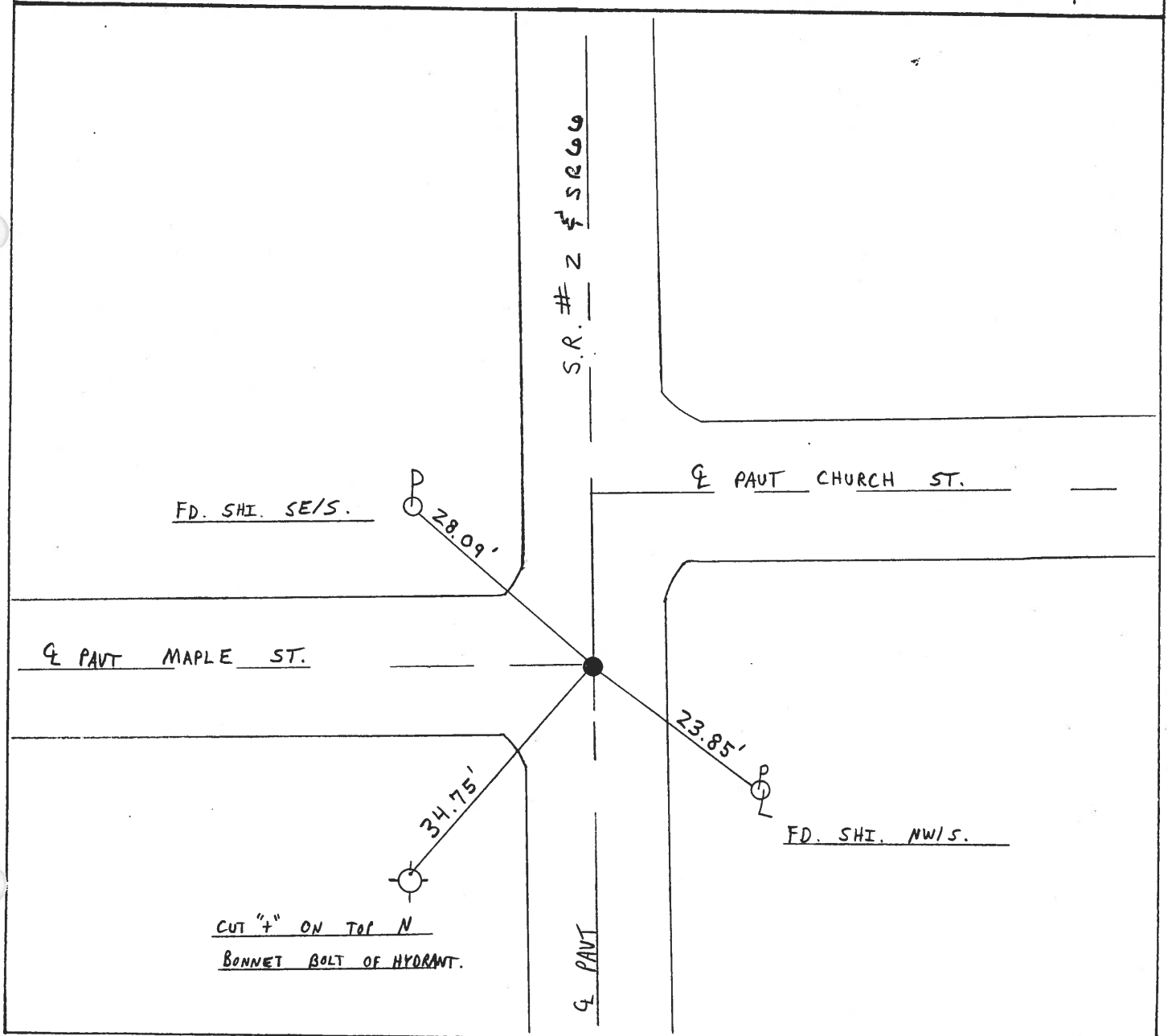
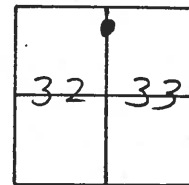
9-4-96

ON SURFACE - BELOW 1" BELOW

LEFT - & PAV'T. - RIGHT ON 4

TO EDGE PAVEMENT

S.L.M. 225+ 35



County FULTON S.R. 66

Township GERMAN

Section 32

T2N, R5E

Personnel Barnhisel

Householder

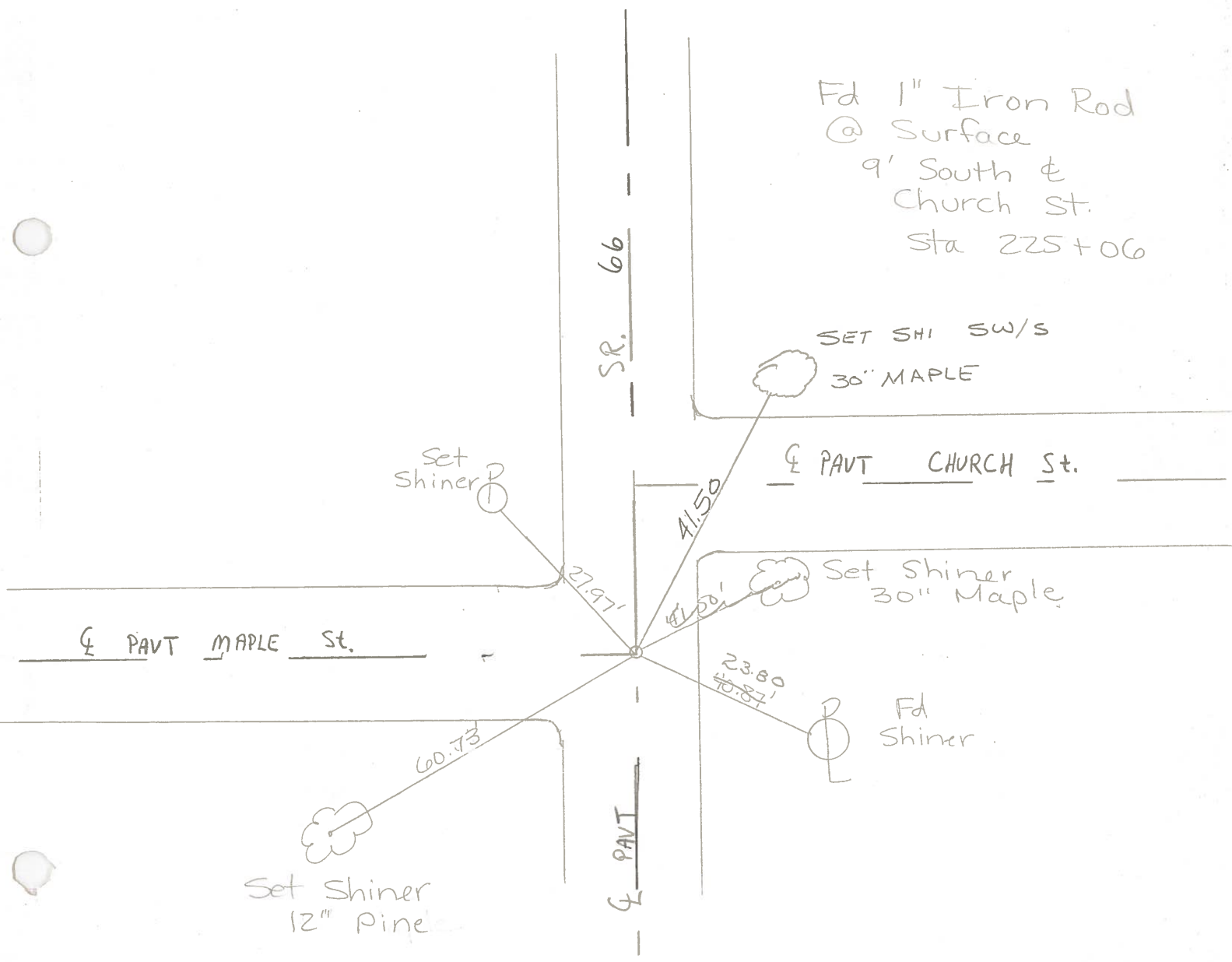
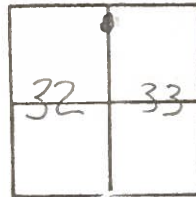
Ensign

**7E**

Date August 1, 1984

Weather Humid

Temp. ± 86



PERSONNEL	TITLE	PERSONNEL	TITLE
Tomsic			
Neuser			
Granata			
Vahyi			

COUNTY Fulton DATE MAY 2, 1973  
 S. R. 66 WEATHER \_\_\_\_\_  
 SEC. ARCHBOLD O. TEMP. \_\_\_\_\_

DESCRIPTION \_\_\_\_\_ LEFT \_\_\_\_\_ CENTER LINE \_\_\_\_\_ RIGHT \_\_\_\_\_ JOB NO. \_\_\_\_\_

