

O.D.O.T. DISTRICT 2 SURVEY OFFICE (USE ONLY)

PERSONNEL

REFERENCE NO. 11

SHEET 9 OF 49

NOTES RHOADES  
 H.C. O'DONNELL  
 R.C. TRENKA  
HAGEMEYER

DATE 7/3/18  
 WEATHER SUNNY  
 TEMP. 80°

ROUTE SR 66  
 COUNTY FULTON  
 TOWNSHIP GERMAN  
 SECTION 20  
 T 7 N R 4 E

DWG BY NIESE PID 102801

TYPE MONUMENT MAG/WASHER

ON SURFACE - ~~BELOW~~ ON

OFFSET CL PAVEMENT ON LT : RT  
11.0' TO LT EDGE PAVEMENT

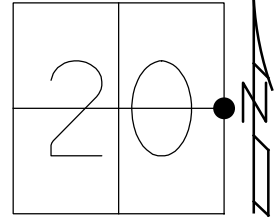
STATION: 236+03.5

HORZ.DATUM: NAD83(2011)

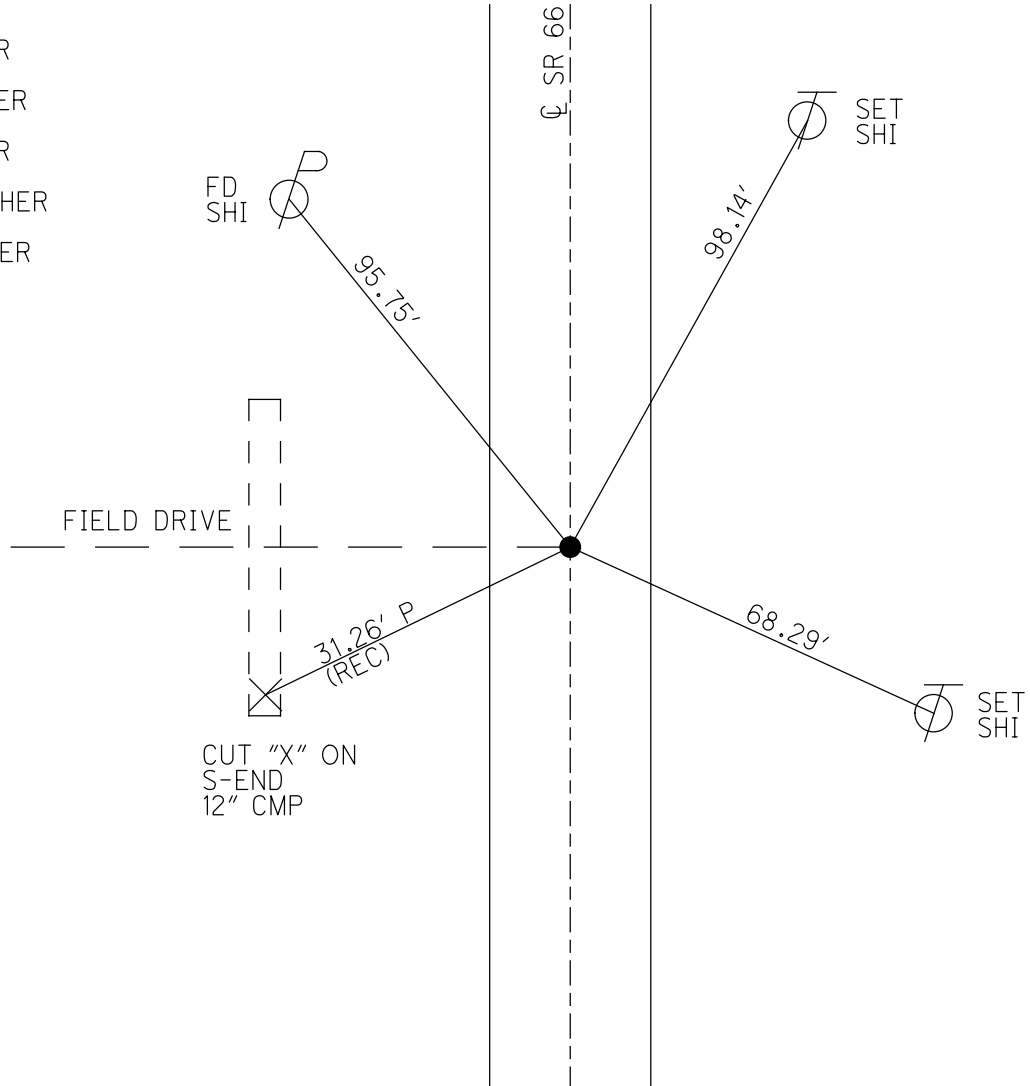
GEOID: 2012A

GRID: NORTHING: 691482.080

EASTING: 1474003.635



RECORD:  
 FD PK/WASHER  
 10/13/93, CL  
 SET PK/WASHER  
 7/29/94  
 FD PK/WASHER  
 6/14/07, TMR  
 SET MAG/WASHER  
 8/7/07  
 FD MAG/WASHER  
 REF11  
 12/1/16, JFO  
 UNCOVERED  
 MAG/WASHER  
 1" DOWN  
 7/19/19, JFO

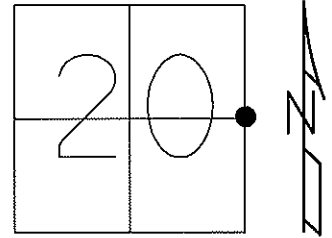


CUT "X" ON  
 S-END  
 12" CMP

O.D.O.T. DISTRICT 2 SURVEY OFFICE (USE ONLY)

PERSONNEL \_\_\_\_\_ REFERENCE NO. 11 SHEET 1 OF 3  
 NOTES CANTERBURY DATE 06-14-07 ROUTE SR 66  
 H.C. ROUSOS WEATHER SUNNY COUNTY FULTON  
 R.C. HOUESHELL TEMP. +78° TOWNSHIP GERMAN  
 \_\_\_\_\_ SECTION 20  
 \_\_\_\_\_ T 7 N R 4 E

TYPE MONUMENT \_\_\_\_\_ FD. SHANK \_\_\_\_\_  
~~ON SURFACE~~ - BELOW 3" DOWN \_\_\_\_\_  
~~LEFT~~ - C PAV'T - ~~RIGHT~~ ON CL. \_\_\_\_\_  
11' TO LT. EDGE PAVEMENT \_\_\_\_\_  
 S.L.M. 236+02 (SV1) \_\_\_\_\_

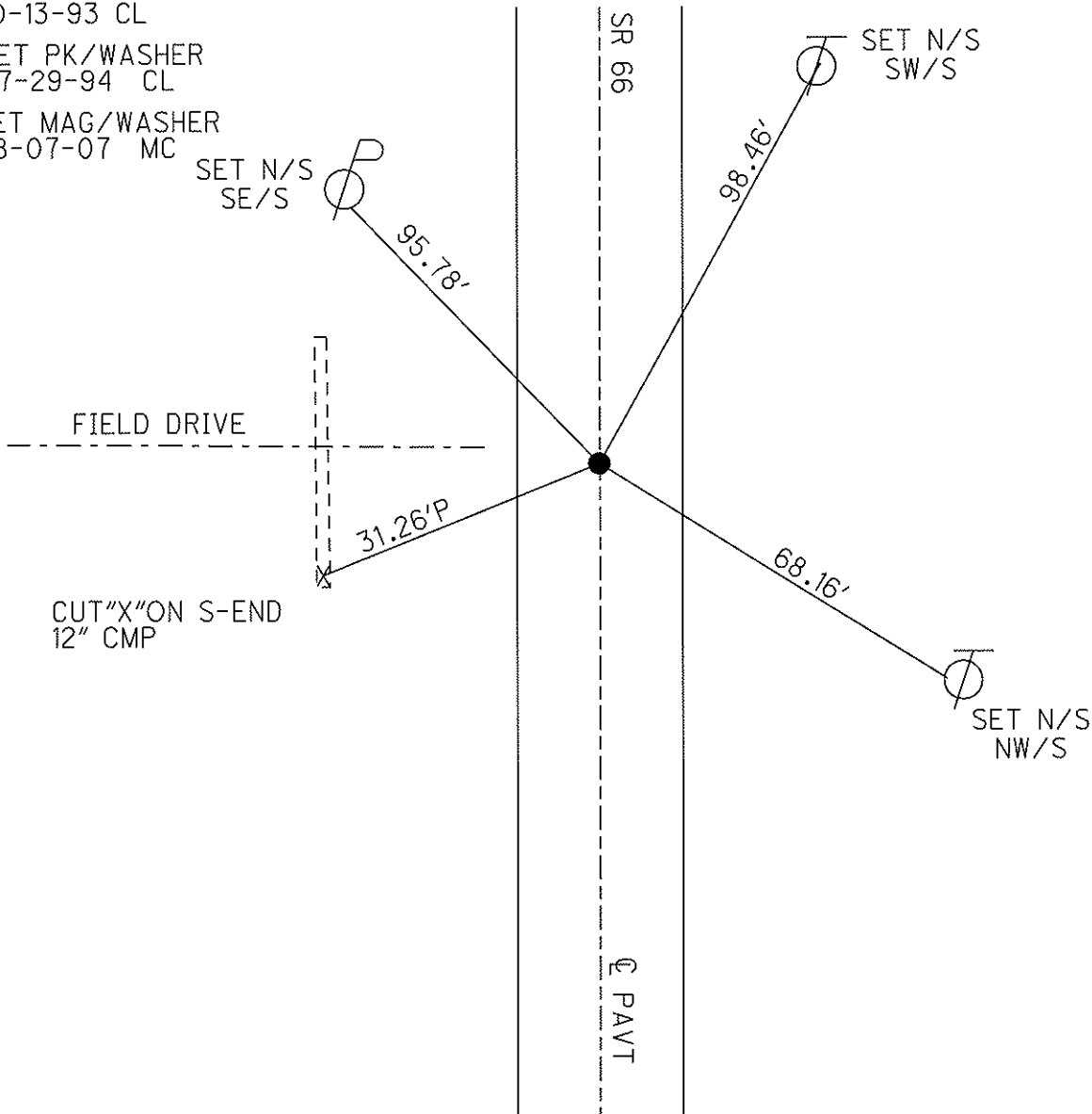


Grid: Northing: 691482.116 Easting: 1474003.713

FD. PK/WASHER  
10-13-93 CL

SET PK/WASHER  
07-29-94 CL

SET MAG/WASHER  
08-07-07 MC



# O.D.O.T. DISTRICT 2 SURVEY OFFICE

PERSONNEL

REFERENCE NO. 11

SHEET 2 OF 22

NOTES D. CURTIS

H.C. LOEHRKE

R.C. CANTERBURY

DATE 10-13-93

WEATHER SUNNY

TEMP. +55

ROUTE S.R. 66

COUNTY FULTON

TOWNSHIP GERMAN

SECTION 20

T 1 N 4 E

Reset

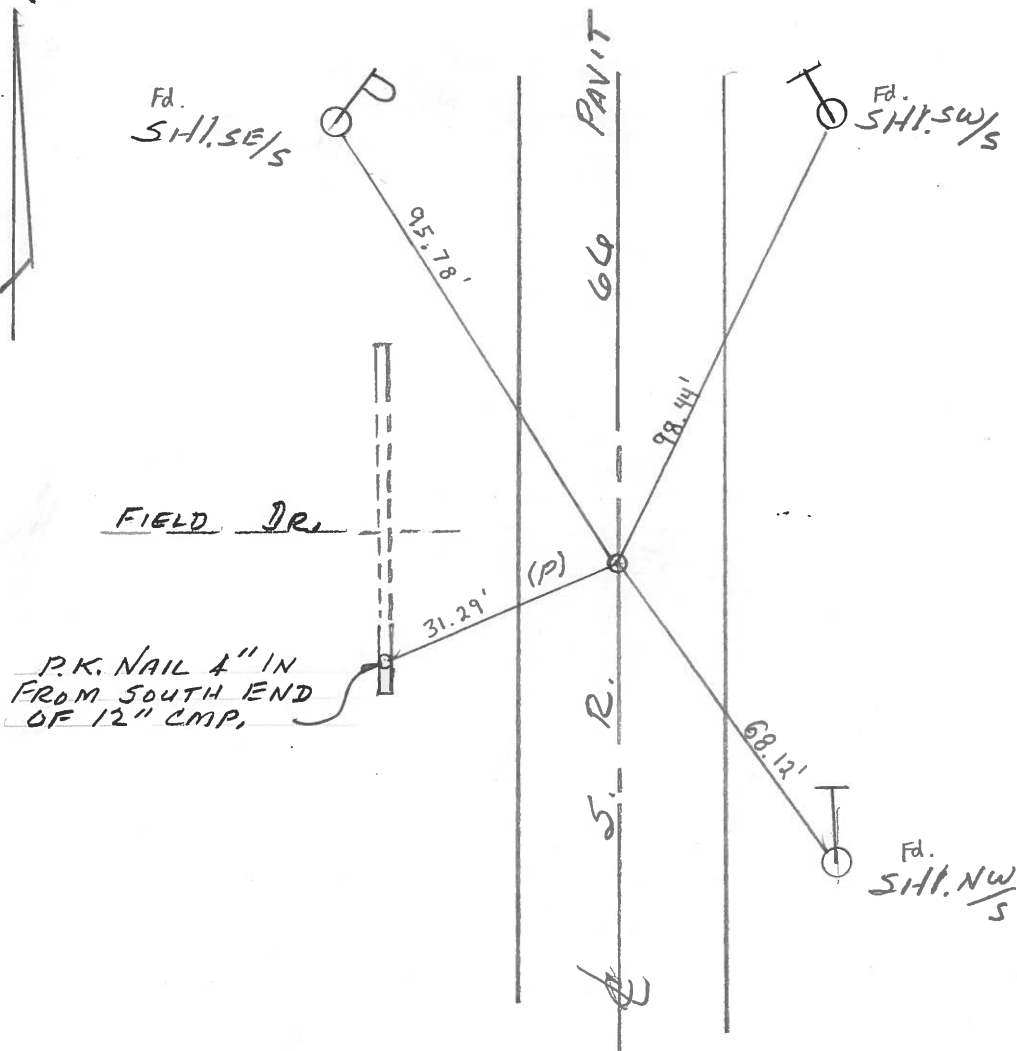
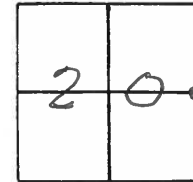
TYPE MONUMENT PK/WASHER 7-29-94

ON SURFACE - BELOW ON SURFACE

LEFT- & PAV'T. - RIGHT & PAVIT

11.0' TO LEFT EDGE PAVEMENT

S.L.M. 236 + 10



County FULTON S.R. 66

Date April 22, 83

Township GERMAN

Weather CLEAR

Section 20

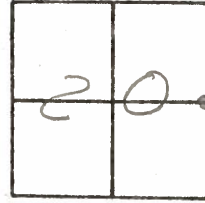
Temp. +65°

T7N, R4E

Personnel Hoffman

# 11

CREW

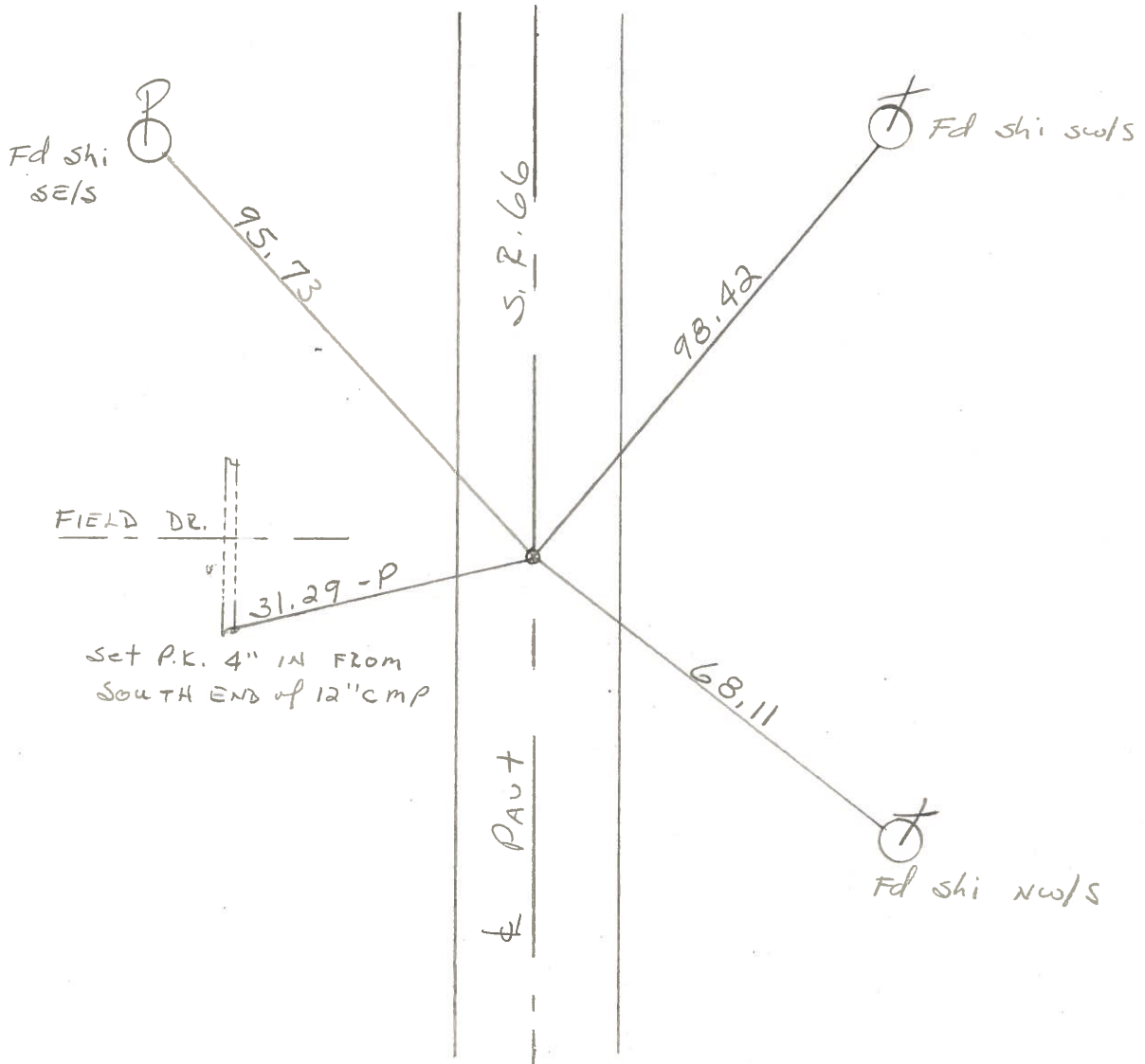


Fd small R.R. spk @ surface

SLM 236+04

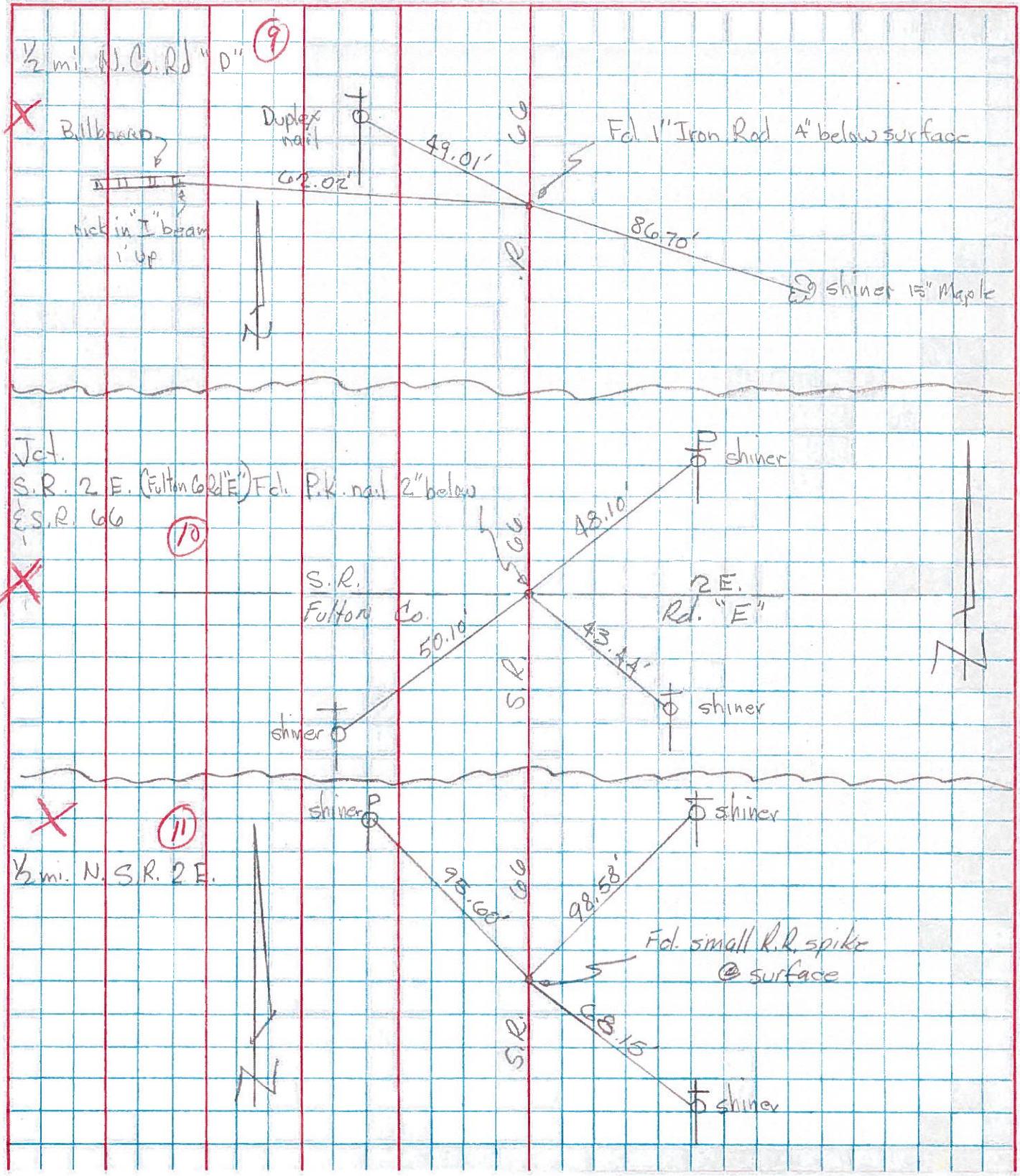
ON & PAUT  
11.2' TO W.E.P.  
11.1' TO E.E.P.

SET P.K./WASHER  
8-8-83  
S.W.H.



| PERSONNEL | TITLE | PERSONNEL | TITLE | COUNTY   | DATE        | WEATHER | TEMP. |
|-----------|-------|-----------|-------|----------|-------------|---------|-------|
| Tomsic    |       |           |       | Fulton   | May 2, 1973 |         |       |
| Wewser    |       |           |       | S. R. 66 |             |         |       |
| Granata   |       |           |       | SEC.     |             |         |       |
| Vanyo     |       |           |       |          |             |         |       |

| DESCRIPTION | LEFT | CENTER LINE | RIGHT | JOB NO. |
|-------------|------|-------------|-------|---------|
|-------------|------|-------------|-------|---------|

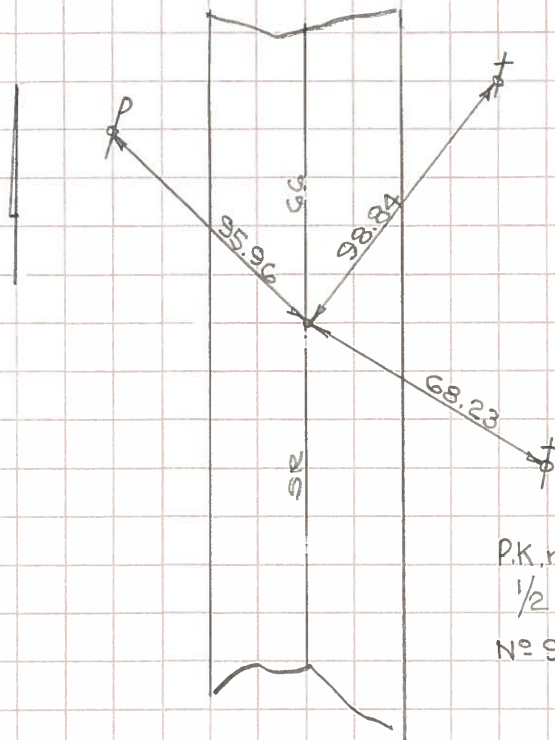




# COMPUTATION SHEET

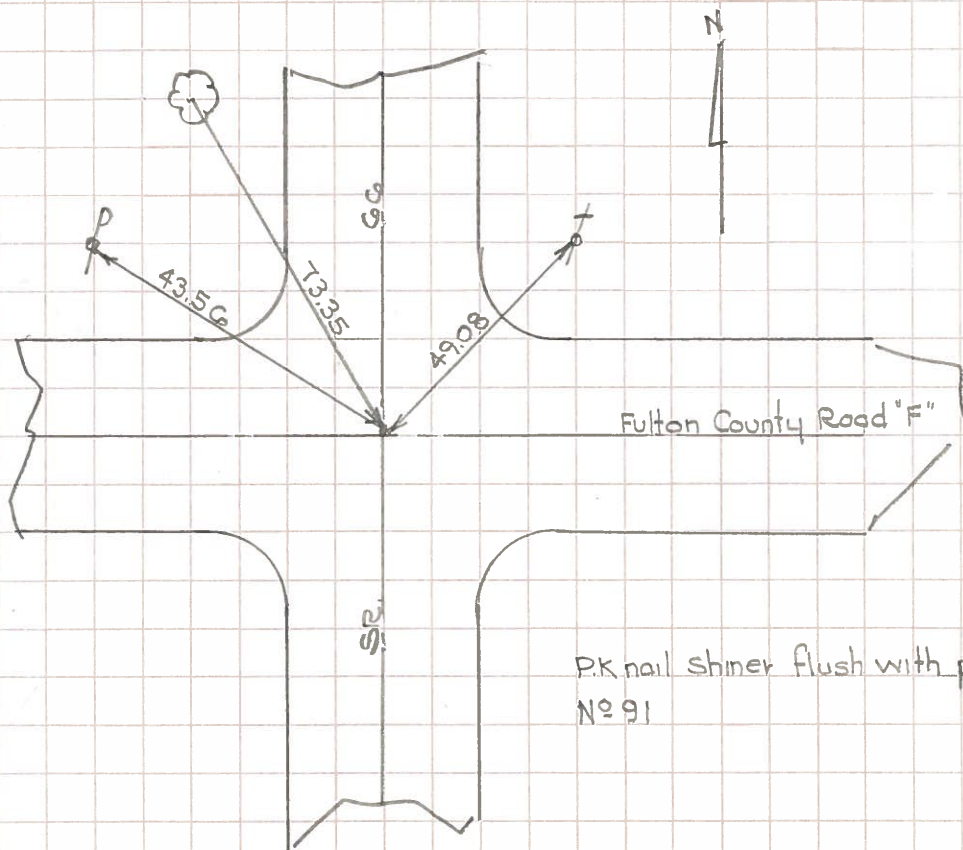
STATE OF OHIO - DEPARTMENT OF HIGHWAYS - BUREAU OF LOCATION AND DESIGN \_\_\_\_\_ COLUMBUS, OHIO  
BY Denno - Curtis - Granata - Omev DATE June 13, 1966 NO. \_\_\_\_\_ OF \_\_\_\_\_ SHEETS  
COUNTY Fulton SECTION \_\_\_\_\_  
DIV. NO. 2 S.R. 66 U.S.R. \_\_\_\_\_ I. R. \_\_\_\_\_  
SUBJECT OF THIS SHEET Monument Ref. SR 66

11



P.K. nail shiner flush with pavement  
1/2 mile North SR 2  
Nº 90

12



P.K. nail shiner flush with pavement  
Nº 91