

O.D.O.T. DISTRICT 2 SURVEY OFFICE (USE ONLY)

PERSONNEL

REFERENCE NO. 12

SHEET 10 OF 49

NOTES RHOADES

DATE 7/3/18

ROUTE SR 66

H.C. O'DONNELL

WEATHER SUNNY

COUNTY FULTON

R.C. TRENKA
HAGEMeyer

TEMP. 80°

TOWNSHIP GERMAN

DWG BY NIESE PID 102801

SECTION 17

T 7 N R 4 E

TYPE MONUMENT MAG/WASHER

ON SURFACE - ~~BELOW~~ ON

OFFSET \varnothing PAVEMENT ON BOTH LT : RT

- TO - EDGE PAVEMENT

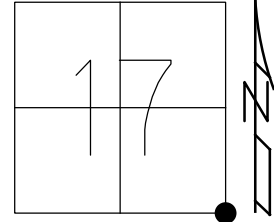
STATION: 262+49.3

HORIZ.DATUM: NAD83(2011)

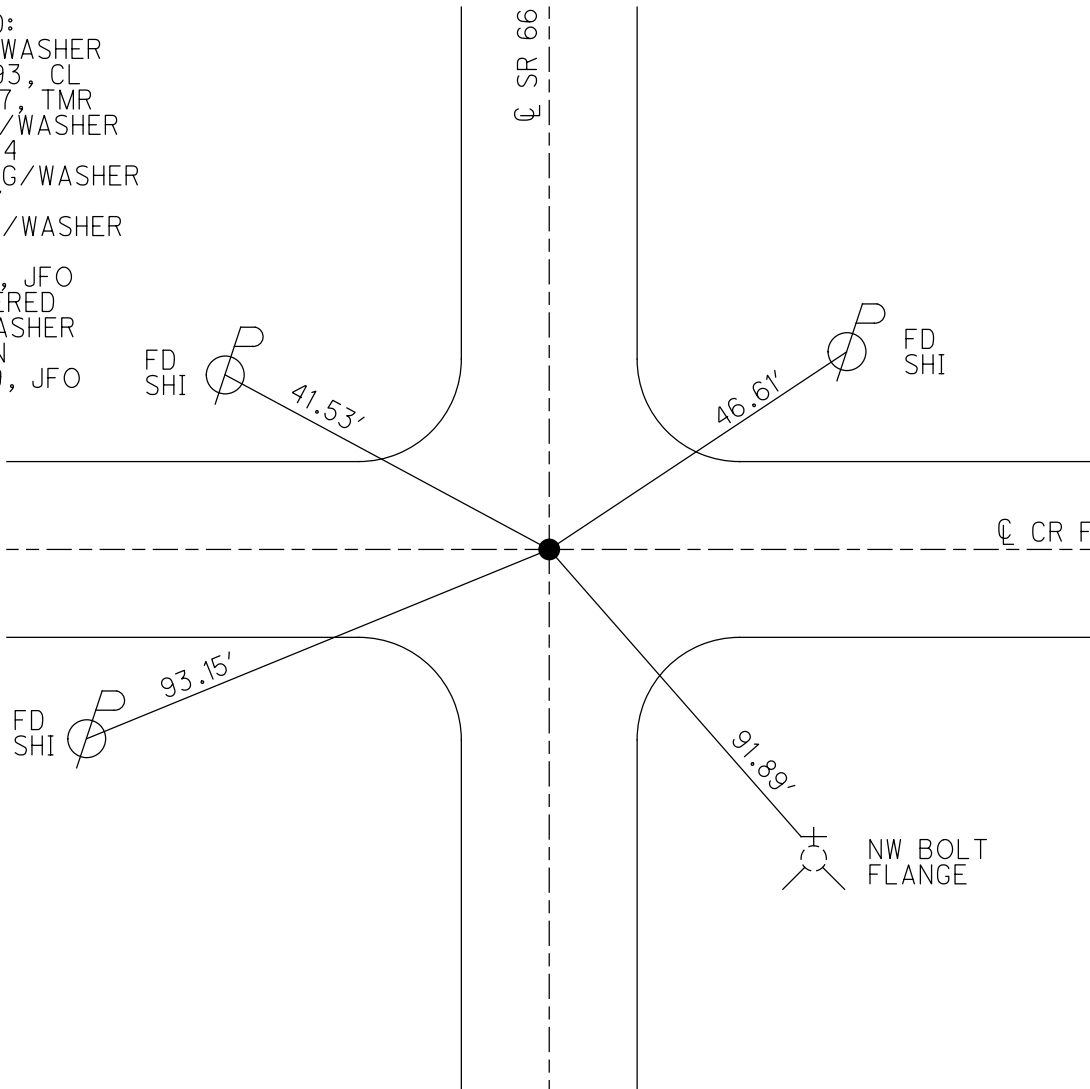
GEOID: 2012A

GRID: NORTHING: 694127.477

EASTING: 1474052.125



RECORD:
FD PK/WASHER
10/13/93, CL
6/14/07, TMR
SET PK/WASHER
7/29/94
SET MAG/WASHER
8/7/07
FD MAG/WASHER
REF12
12/1/16, JFO
UNCOVERED
MAG/WASHER
1" DOWN
7/19/19, JFO



O.D.O.T. DISTRICT 2 SURVEY OFFICE (USE ONLY)

PERSONNEL

REFERENCE NO. 12

SHEET 2 OF 3

NOTES CANTERBURY

DATE 06-14-07

ROUTE SR 66

H.C. ROUSOS

WEATHER SUNNY

COUNTY FULTON

R.C. HOUESHELL

TEMP. +78°

TOWNSHIP GERMAN

SECTION 17

T 7 N R 4 E

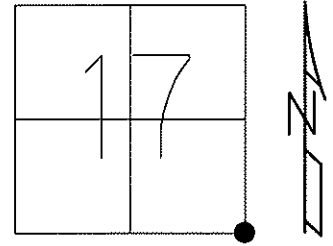
TYPE MONUMENT FD. PK/WASHER

ON SURFACE - ~~BELOW~~ ON SURFACE

~~LEFT~~ - CL PAV'T - ~~RIGHT~~ CL. BOTH

TO EDGE PAVEMENT

S.L.M. 262+45 (SV2)

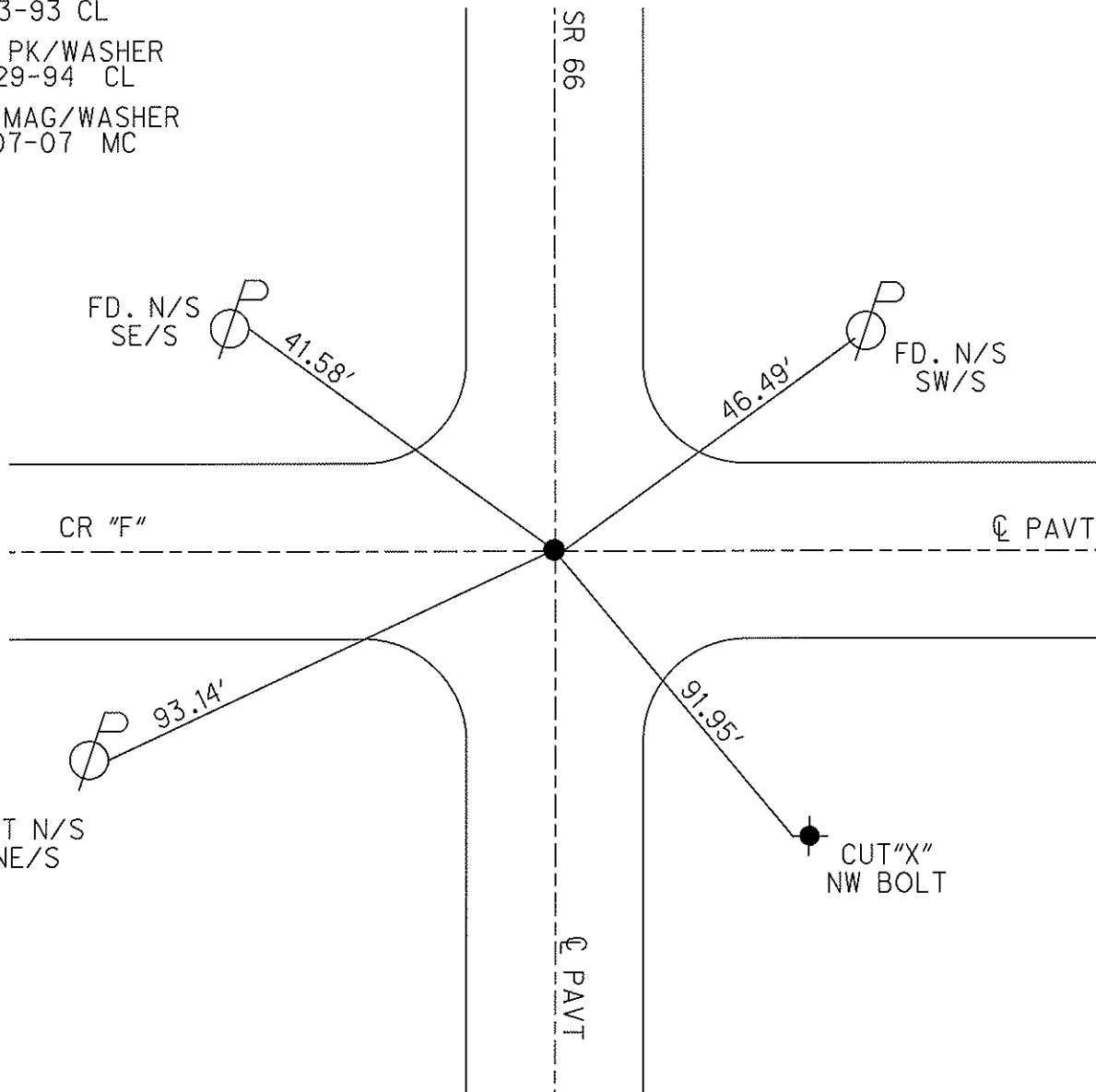


Grid: Northing: 694127.494 Easting: 1474052.077

FD. PK/WASHER
10-13-93 CL

SET PK/WASHER
07-29-94 CL

SET MAG/WASHER
08-07-07 MC



O.D.O.T. DISTRICT 2 SURVEY OFFICE

PERSONNEL

REFERENCE NO. 12

SHEET 3 OF 22

NOTES D. CURTIS

H.C. LOEHRKE

DATE 10-13-93

ROUTE S. R. 66

R.C. CANTERBURY

WEATHER SUNNY

COUNTY FULTON

TEMP. +55

TOWNSHIP GERMAN

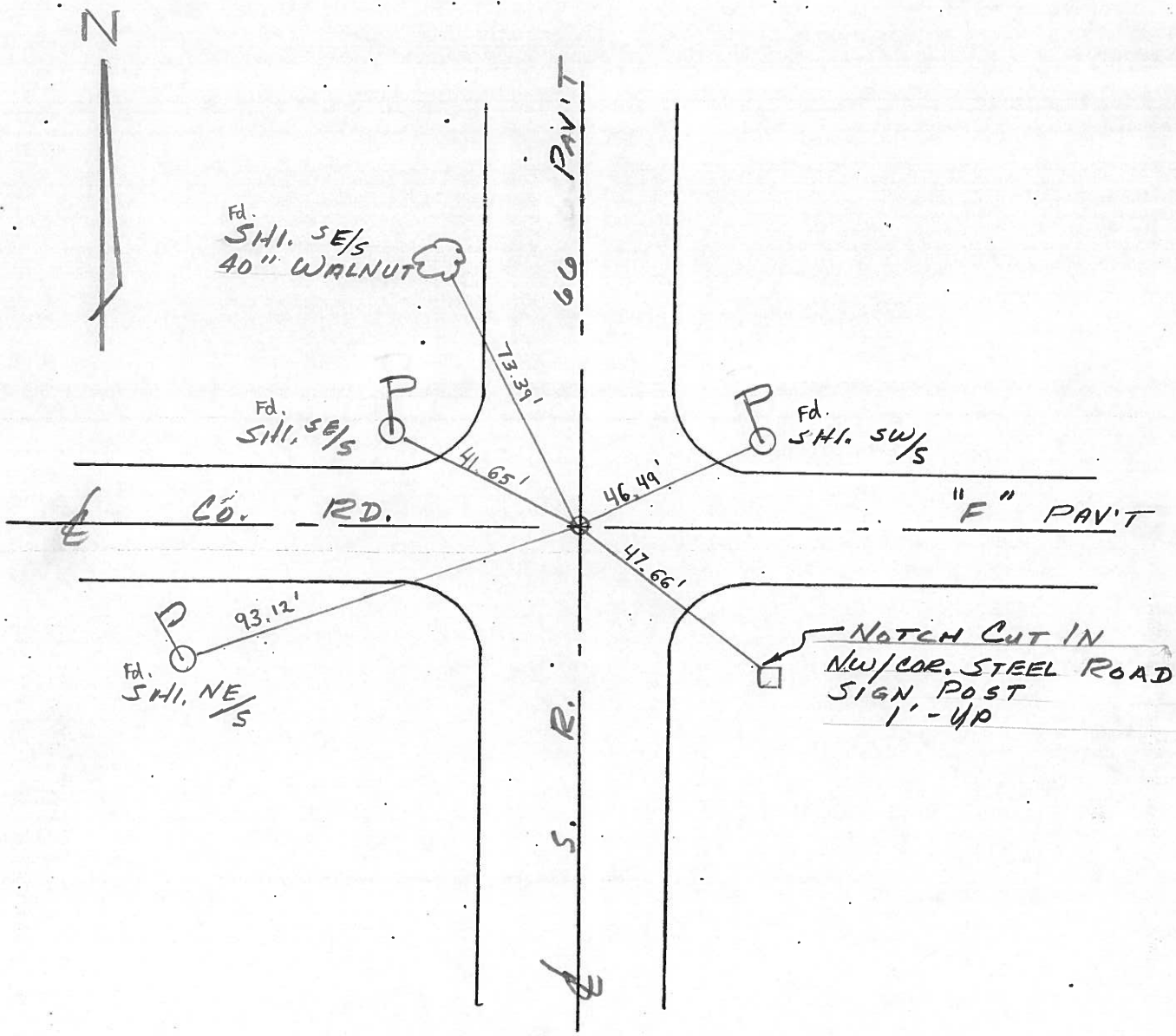
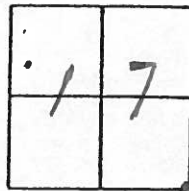
SECTION 17

T 7 N R 4 E

TYPE MONUMENT SMALL R.R. SPK.
 ON SURFACE - BELOW 1 1/2" BELOW
 LEFT- & PAV'T. - RIGHT & BOTH RDS
 TO EDGE PAVEMENT
 S.L.M. 202 + 55

Set P.K. / WASHER

7.29-94
C.L.



County Fulton S.R. 66

Date April 22, 83

Township GERMAN

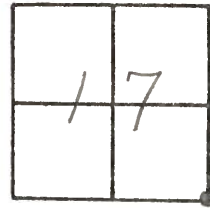
Weather Clear

Section 17

Temp. +65°

T7N, R4E

Personnel HOFFMAN



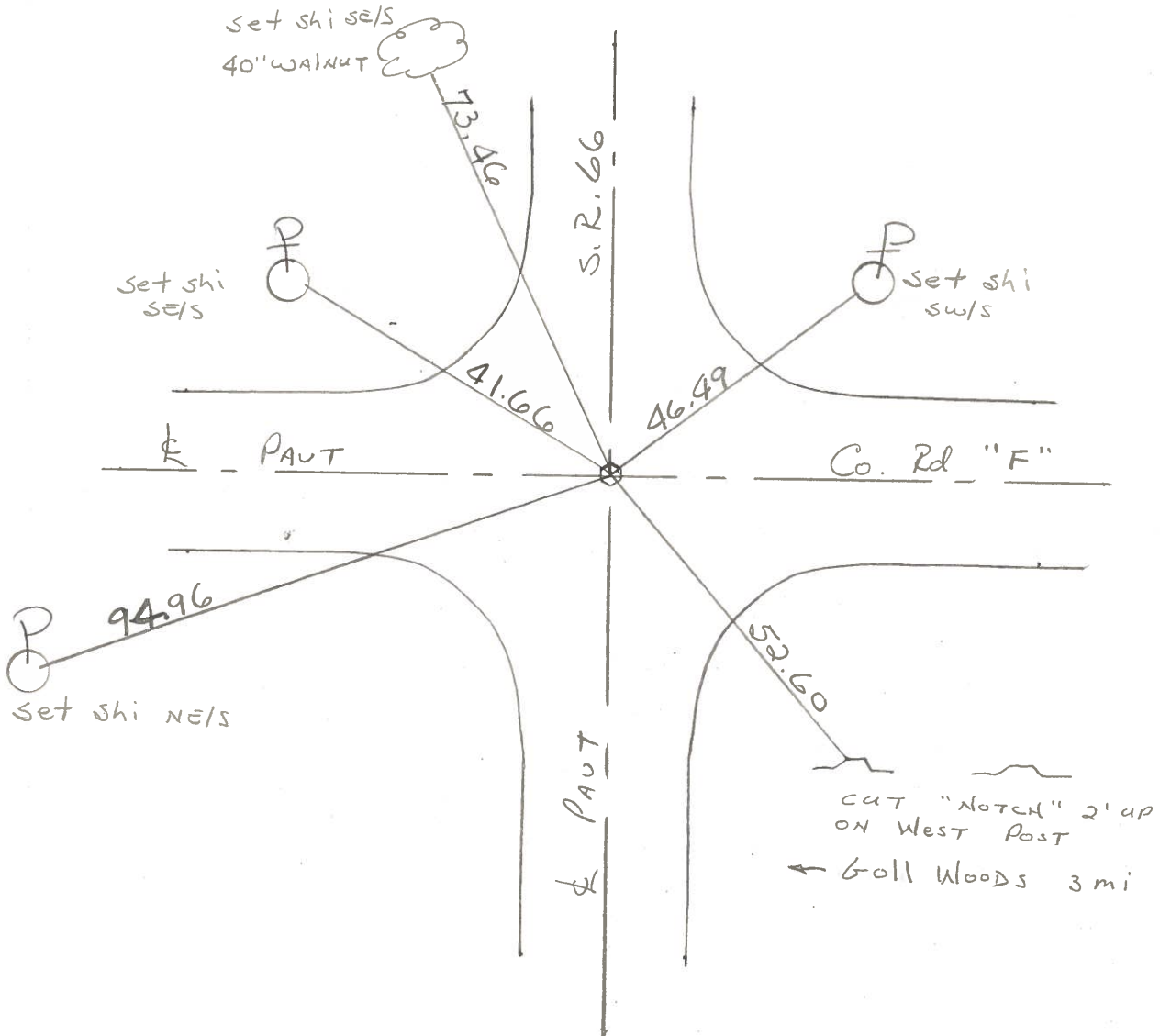
#12

CREW

Fd small R.R. spike on surface
on E of both road PAUTS.

SLM 262 + 50

SET P.K./WASHER
8-8-83 S.W.H.



COMPUTATION SHEET

STATE OF OHIO - DEPARTMENT OF HIGHWAYS - BUREAU OF LOCATION AND DESIGN _____ COLUMBUS, OHIO

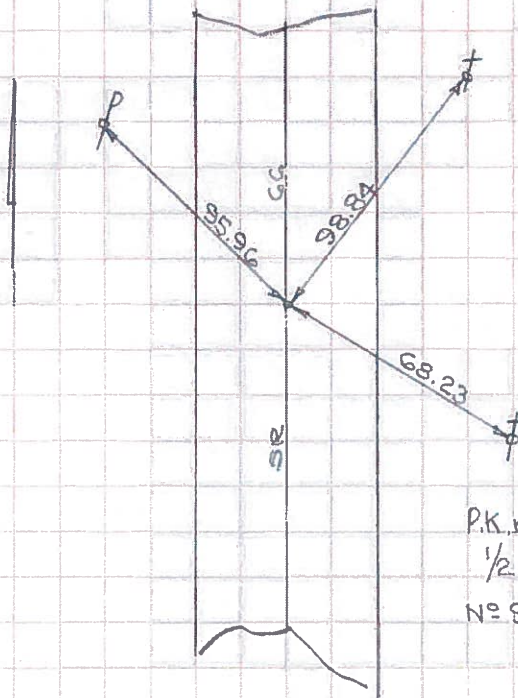
BY Denno - Curtis - Granata - Omev DATE June 13, 1966 NO. _____ OF _____ SHEETS

COUNTY Fulton SECTION _____

DIV. NO. 2 S.R. 66 U.S.R. _____ I. R. _____

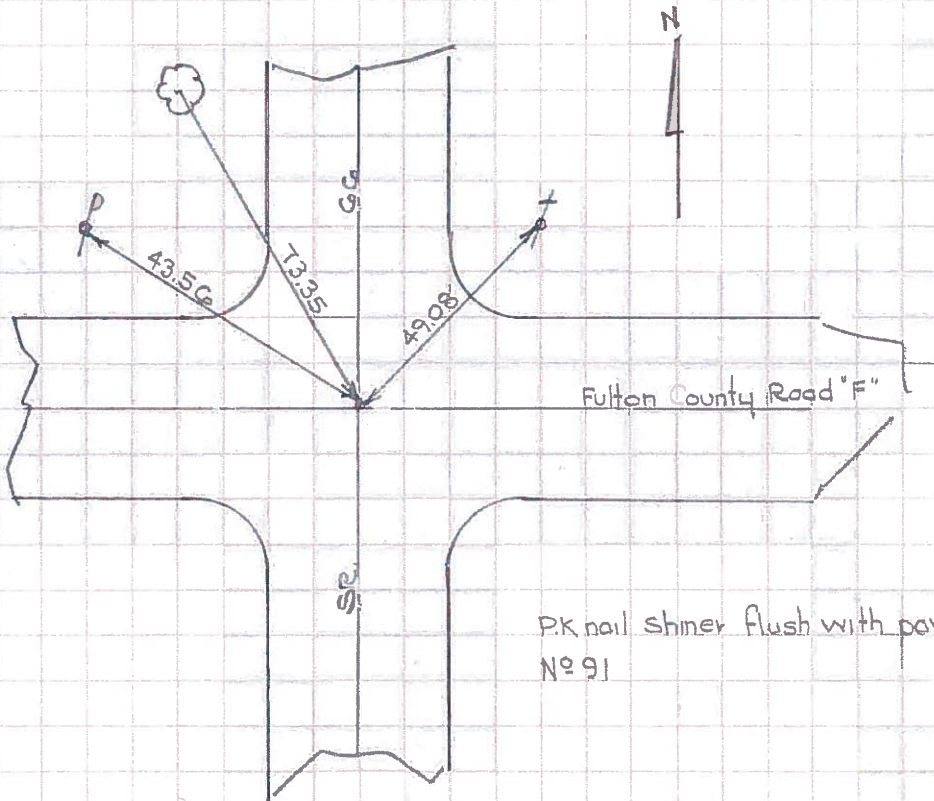
SUBJECT OF THIS SHEET Monument Ref. SR 66

11



P.K. nail shiner flush with pavement
1/2 mile North SR 2
Nº 90

12



P.K. nail shiner flush with pavement
Nº 91