

O.D.O.T. DISTRICT 2 SURVEY OFFICE (USE ONLY)

PERSONNEL

REFERENCE NO. 16

SHEET 3 OF 6

NOTES CURTIS DATE 10/13/93  
H.C. LOEHRKE WEATHER SUNNY  
R.C. CANTERBURY TEMP. 50°

ROUTE CR 23, OLD SR 66  
COUNTY FULTON  
TOWNSHIP FRANKLIN  
SECTION 5  
T 7 N R 5 E

DWG BY NIESE PID 92126

TYPE MONUMENT P.K./WASHER

ON SURFACE - ~~BELOW~~ ON \_\_\_\_\_

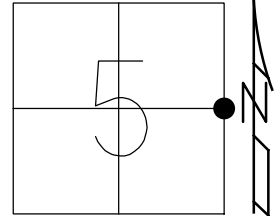
OFFSET  $\odot$  PAVEMENT 0.8' LT : ~~RT~~

9.8' TO LT EDGE PAVEMENT

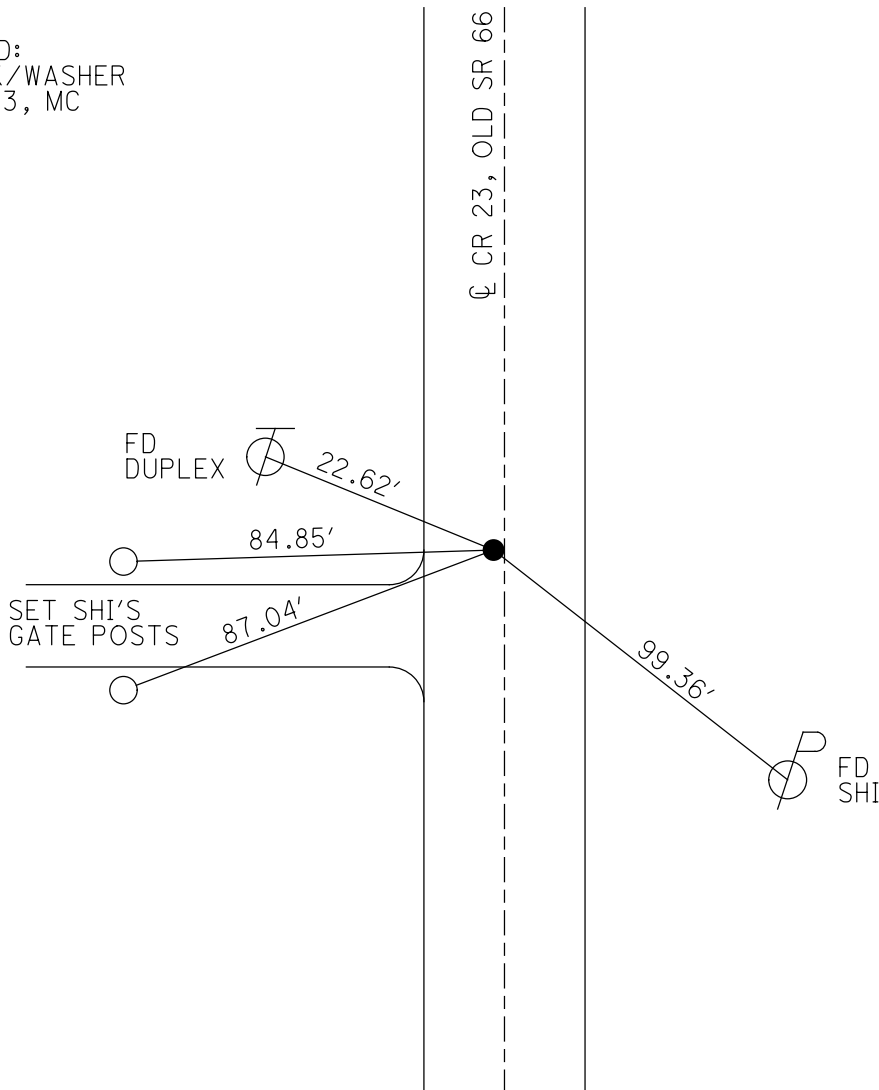
STATION: 394+97

HORZ. DATUM: - GEOID: -

GRID: NORTHING: - EASTING: -



RECORD:  
SET PK/WASHER  
12/6/93, MC



# O.D.O.T. DISTRICT 2 SURVEY OFFICE

PERSONNEL

REFERENCE NO. 16

SHEET 8 OF 22

NOTES D. CURTIS

H.C. Loehrke

DATE 10-13-93

ROUTE S.R. 66

R.C. Canterbury

WEATHER Sunny

COUNTY FULTON

TEMP. +50

TOWNSHIP FRANKLIN

SECTION 5

T. 7 N. R. 5 E.

TYPE MONUMENT PK/WASHER

Set PK/washer

ON SURFACE - ~~BELOW~~ ON SURFACE

12/6/93

LEFT - ~~C~~ PAV'T. - RIGHT .8' - LEFT

MC

9.8' TO left EDGE PAVEMENT

S.L.M. 394 + 97

