



# O.D.O.T. DISTRICT 2 SURVEY OFFICE

PERSONNEL

REFERENCE NO. 17-17-A

SHEET      OF     

NOTES VAN DUSEN

H.C. BARNHISEL

DATE 10-14-93

ROUTE SR 66

R.C. CANTERBURY

WEATHER SUNNY

COUNTY FULTON

CORDS

TEMP. +40°F

TOWNSHIP FRANKLIN

SECTION 5

T 7 N R 5 E

TYPE MONUMENT LARGE RR/SOKS

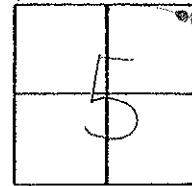
~~ON SURFACE~~ - BELOW 5"

LEFT - ☉ PAV'T. - RIGHT     

     TO      EDGE PAVEMENT

S.L.M. A = 418+14 B = 418+60

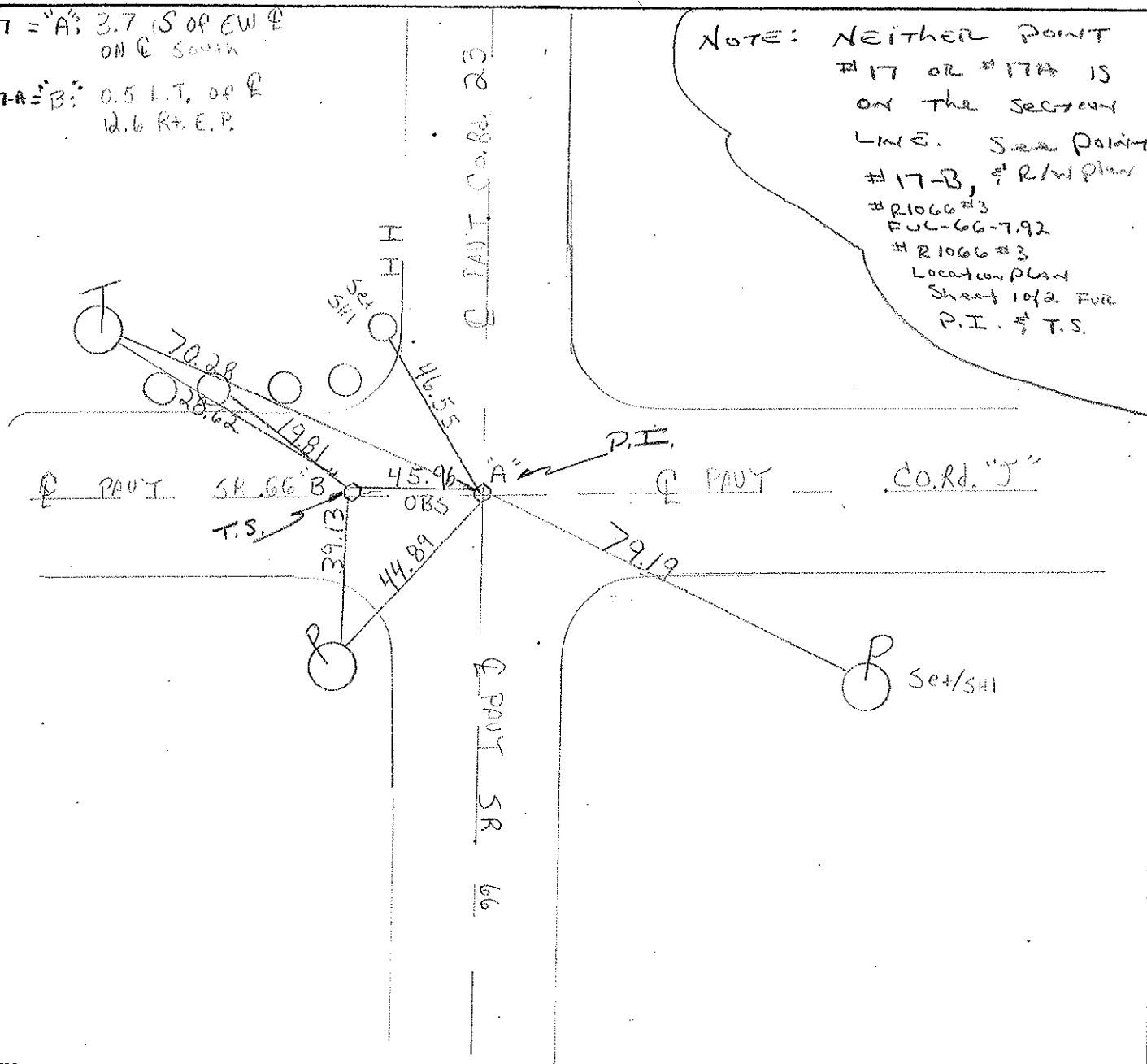
Set PK and  
washers  
12/6/93  
MC



# 17 = "A": 3.7 S of EW ☉  
ON ☉ South

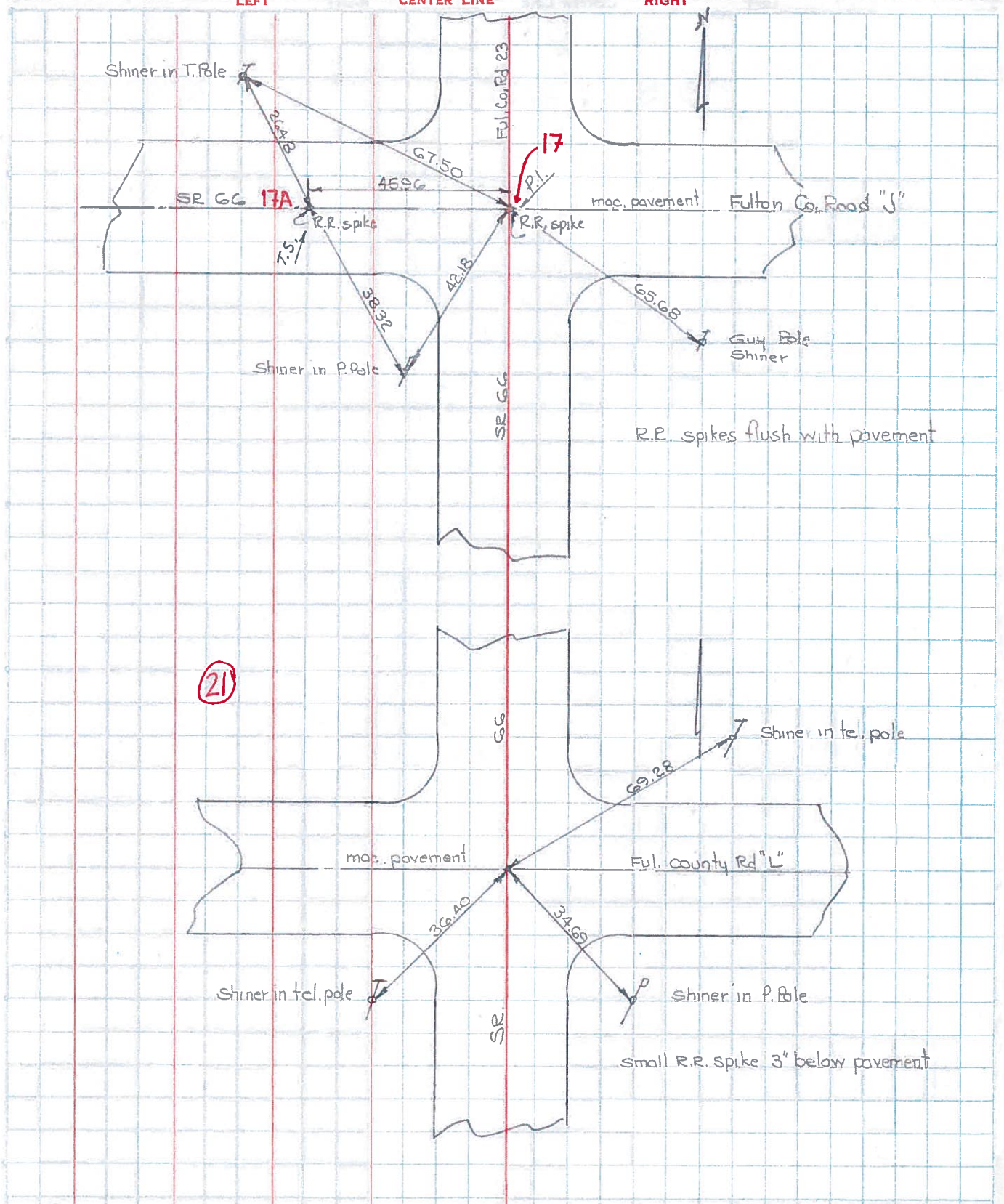
# 17-A = "B": 0.5 L.T. of ☉  
12.6 Rt. E.P.

NOTE: NEITHER POINT  
# 17 OR # 17A IS  
ON THE SECTION  
LINE. See Point  
# 17-B, ☉ R/W Plan  
# R1066 #3  
FUL-66-7.92  
# R1066 #3  
Location Plan  
Sheet 10 of 2 For  
P.I. & T.S.



PERSONNEL	TITLE	PERSONNEL	TITLE	COUNTY	DATE	WEATHER	TEMP
Danno				Fulton	July 5, 1966	Hot	90°
Curtis				GC			
Granata							
Omer							

DESCRIPTION Monument Ref SR GC JOB NO. \_\_\_\_\_



PERSONNEL TITLE PERSONNEL TITLE

LOUYS  
PESSEFALL  
WISE  
KROHN

COUNTY FU

DATE 6-26-58

S. R. 66-7.92

WEATHER FAIR

SEC. \_\_\_\_\_

TEMP. 75°

DESCRIPTION \_\_\_\_\_

LEFT

CENTER LINE

RIGHT

JOB NO. \_\_\_\_\_

