

O.D.O.T. DISTRICT 2 SURVEY OFFICE (USE ONLY)

PERSONNEL

REFERENCE NO. 17 B

SHEET 6 OF 6

NOTES BARNHEISEL

DATE 1/22/01

ROUTE CR 23, OLD SR 66

H.C. MOSER

WEATHER CLOUDY

COUNTY FULTON

R.C. CANTERBURY

TEMP. 30°

TOWNSHIP FRANKLIN

SECTION 5

DWG BY NIESE PID 92126

T 7 N R 5 E

TYPE MONUMENT LARGE R.R. SPIKE

ON SURFACE - ~~BELOW~~ ON

OFFSET Q PAVEMENT ON LT : RT

10.6' TO LT EDGE PAVEMENT

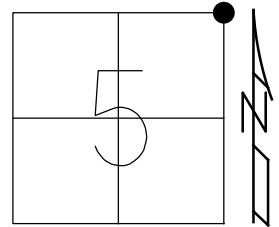
STATION: 421+34.40

HORZ. DATUM: -

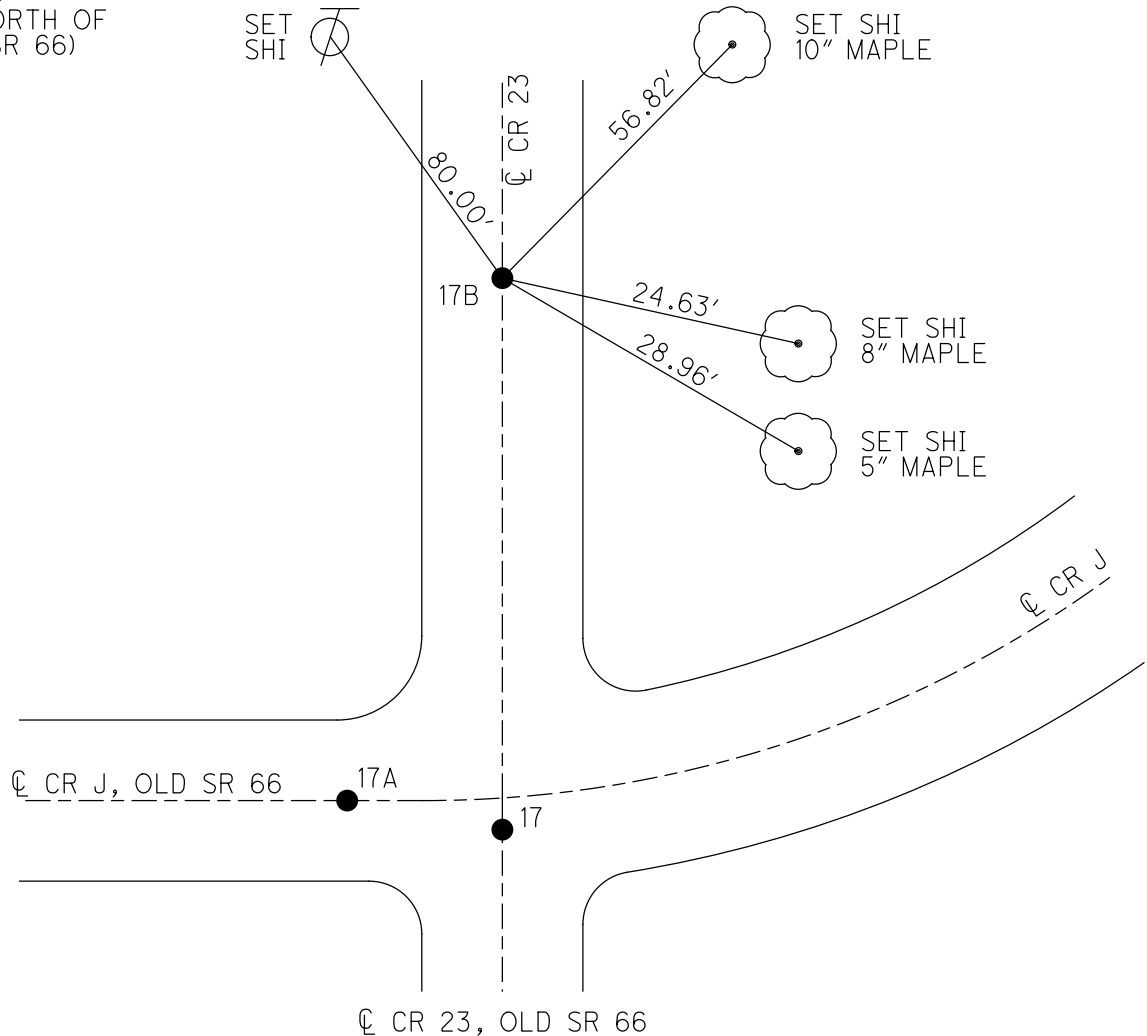
GEOID: -

GRID: NORTHING: -

EASTING: -



RECORD:
±341' NORTH OF
REF17 (SR 66)



O.D.O.T. DISTRICT 2 SURVEY OFFICE

PERSONNEL

REFERENCE NO. 17-B

SHEET 1 OF 1

NOTES BARNHISEL

H.C. MOSEK

DATE 1-22-01

ROUTE 666 (Co. Rd #23)

R.C. CANTERBURY

WEATHER Cloudy

COUNTY FULTON

TEMP. +30°

TOWNSHIP FRANKLIN

SECTION 5

T. 7 N. R. 5 E

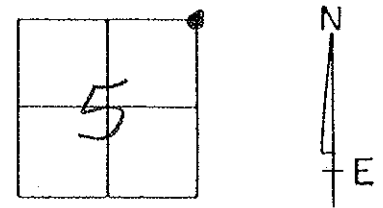
TYPE MONUMENT Lg RR Spk

ON SURFACE - ~~BELOW~~ yes

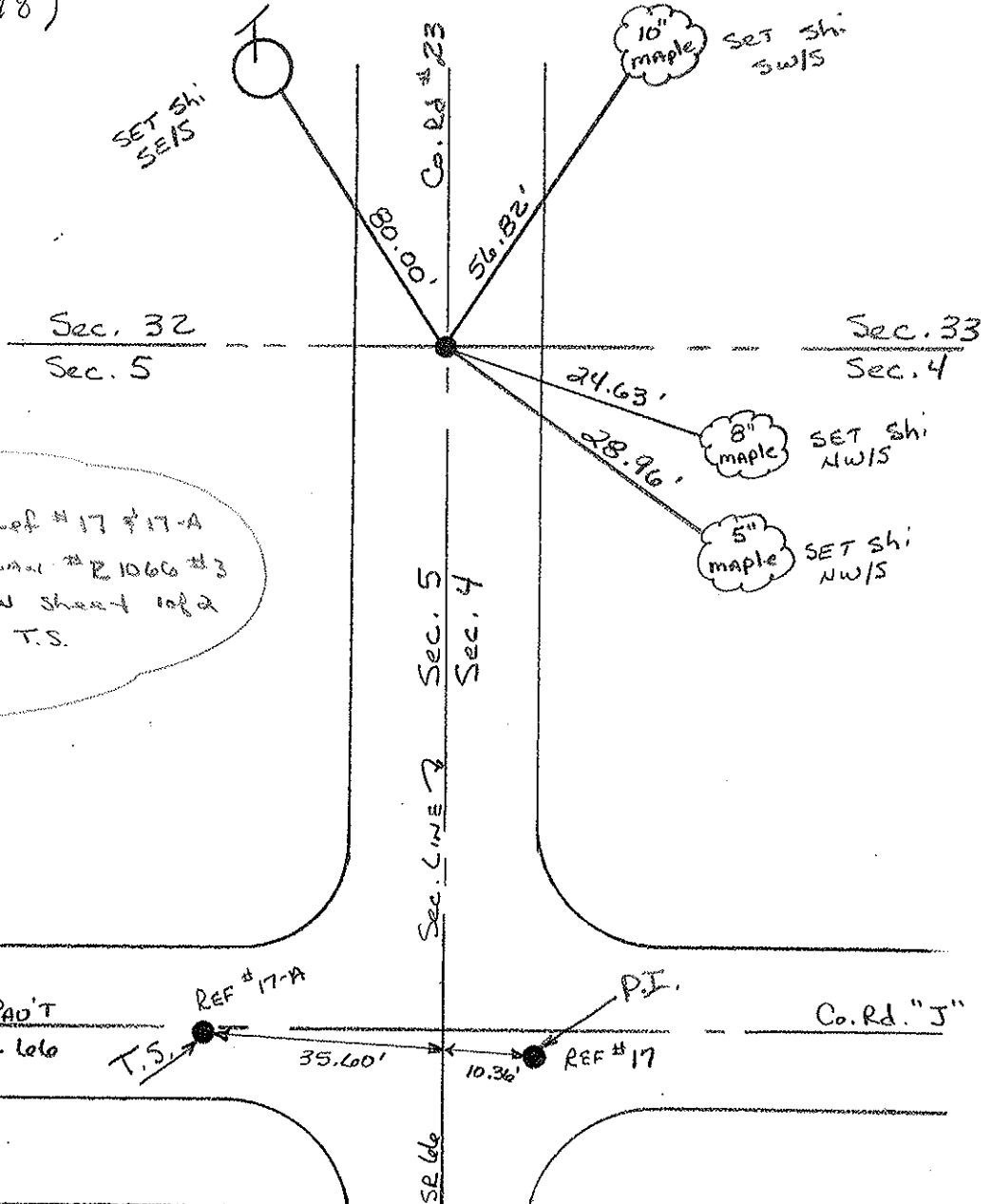
~~LEFT - C~~ PAW'T. - ~~RIGHT~~ yes

10.6' TO LT. EDGE PAVEMENT

S.L.M. 341' ± NORTH OF REF. # 17 (on SR 666)



(SLM - 7.98)



NOTE: See Ref #17 & 17-A
ALSO R/W PLAN #21060 #3
LOCATION PLAN sheet 1 of 2
FOR P.I. & T.S.

PERSONNEL TITLE PERSONNEL TITLE

LOUYS
PESSEFALL
WISE
KROHN

COUNTY FU

DATE 6-26-58

S. R. 66-7.92

WEATHER FAIR

SEC. _____

TEMP. 75°

DESCRIPTION _____

LEFT

CENTER LINE

RIGHT

JOB NO. _____

