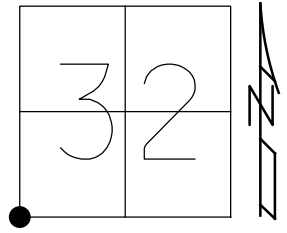


O.D.O.T. DISTRICT 2 SURVEY OFFICE (USE ONLY)

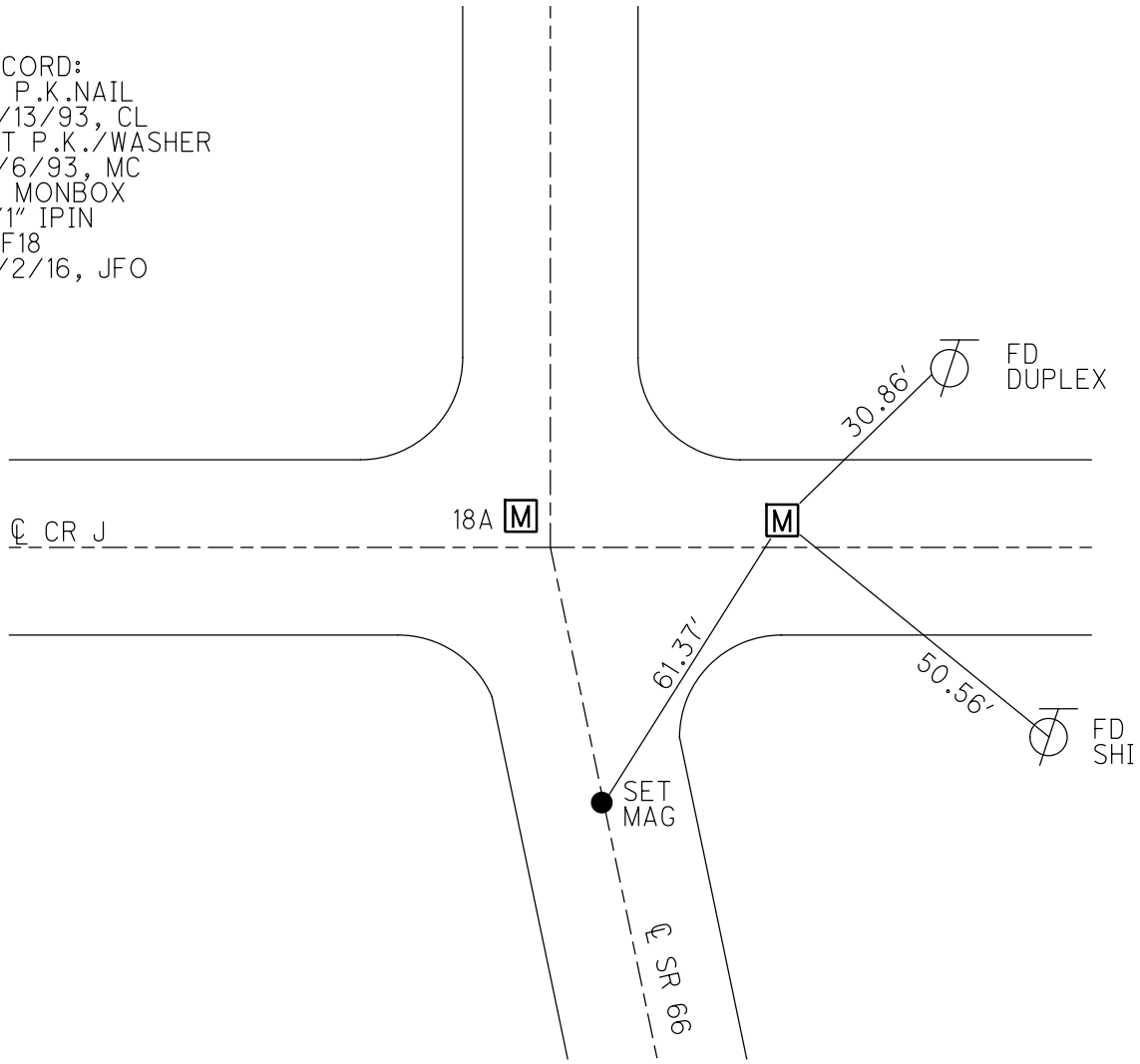
PERSONNEL \_\_\_\_\_ REFERENCE NO. 18 SHEET 31 OF 49  
 NOTES CURTIS DATE 10/13/93 ROUTE SR 66  
 H.C. LOEHRKE WEATHER SUNNY COUNTY FULTON  
 R.C. CANTERBURY TEMP. 50° TOWNSHIP FRANKLIN  
 \_\_\_\_\_ SECTION 32  
 DWG BY NIESE PID 102801 T 7 N R 5 E

TYPE MONUMENT P.K.NAIL  
 ON SURFACE - ~~BELOW~~ ON  
 OFFSET  $\varnothing$  PAVEMENT 2.3' ~~LT~~ : RT  
- TO - EDGE PAVEMENT  
 STATION: 460+94.4



HORZ.DATUM: NAD83(2011) GEOID: 2012A  
 GRID: NORTHING: 710119.450 EASTING: 1468991.990

RECORD:  
 FD P.K.NAIL  
 10/13/93, CL  
 SET P.K./WASHER  
 12/6/93, MC  
 FD MONBOX  
 W/1" IPIN  
 REF18  
 12/2/16, JFO



DIST. FROM 18A-18=58.70'

# O.D.O.T. DISTRICT 2 SURVEY OFFICE

PERSONNEL

REFERENCE NO. 18 & 18-A SHEET 10 OF 22

NOTES D. CURTIS

H.C. Lochrake

DATE 10-13-93

ROUTE S.R. 66

R.C. Canterbury

WEATHER Sunny

COUNTY FULTON

TEMP. +50

TOWNSHIP FRANKLIN

SECTION 5-6-31-32

T 7 N R 5 E

Set PK and Washers  
12/6/93  
MC

TYPE MONUMENT P.K. NAILS

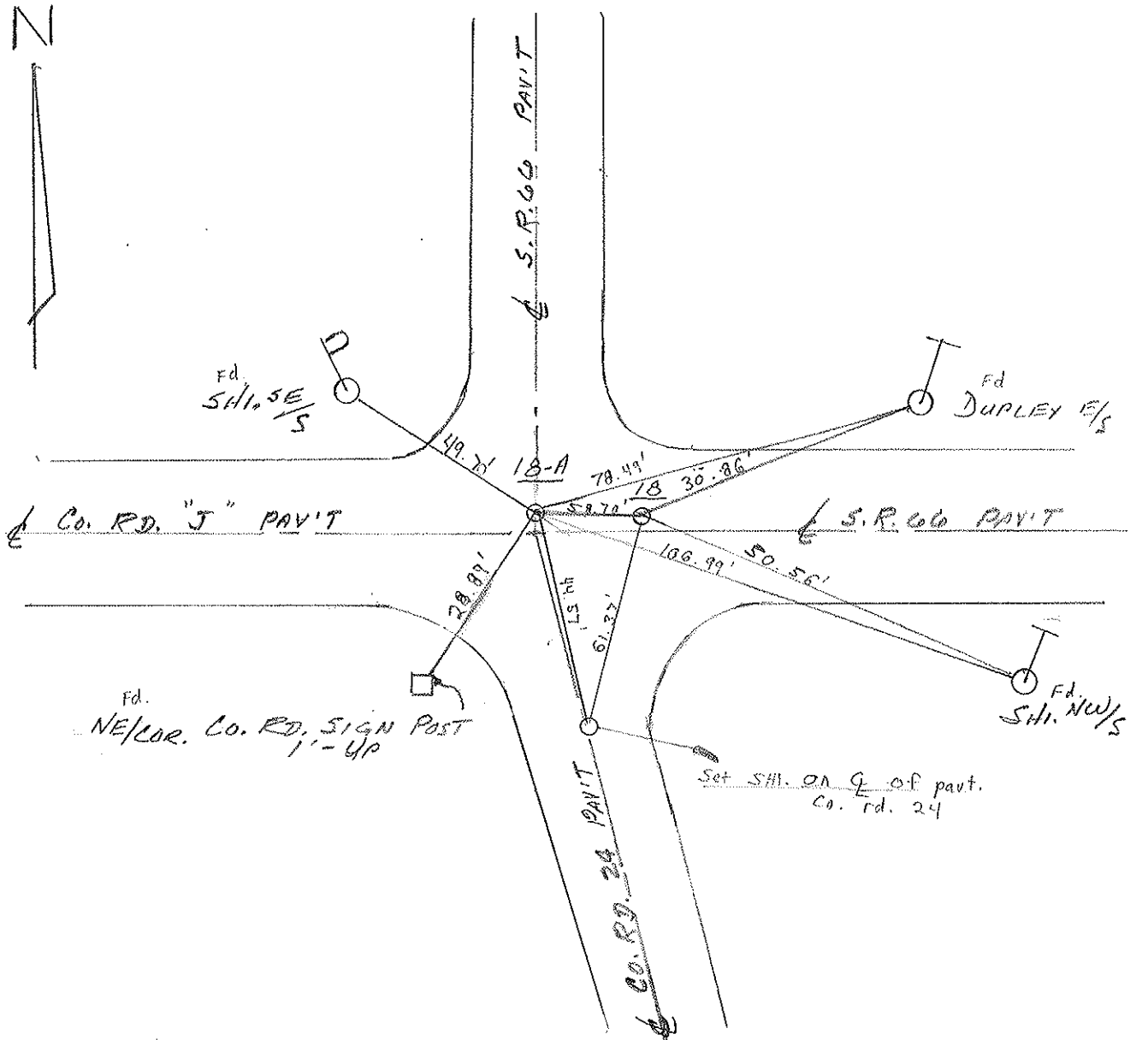
ON SURFACE - BELOW ON SURFACE

LEFT - ☉ PAV'T. - RIGHT ☉ S.R. 66 PAV'T N.

TO EDGE PAVEMENT

S.L.M. 18 = 471 + 18    18-A = 471 + 76

31	32
6	5



County Fulton S.R. 66

Date 9 Aug. 84

Township Franklin

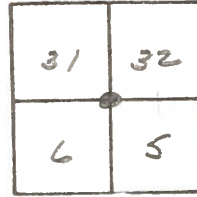
Weather Muggy

Section 5-6-31-32

Temp. 78°

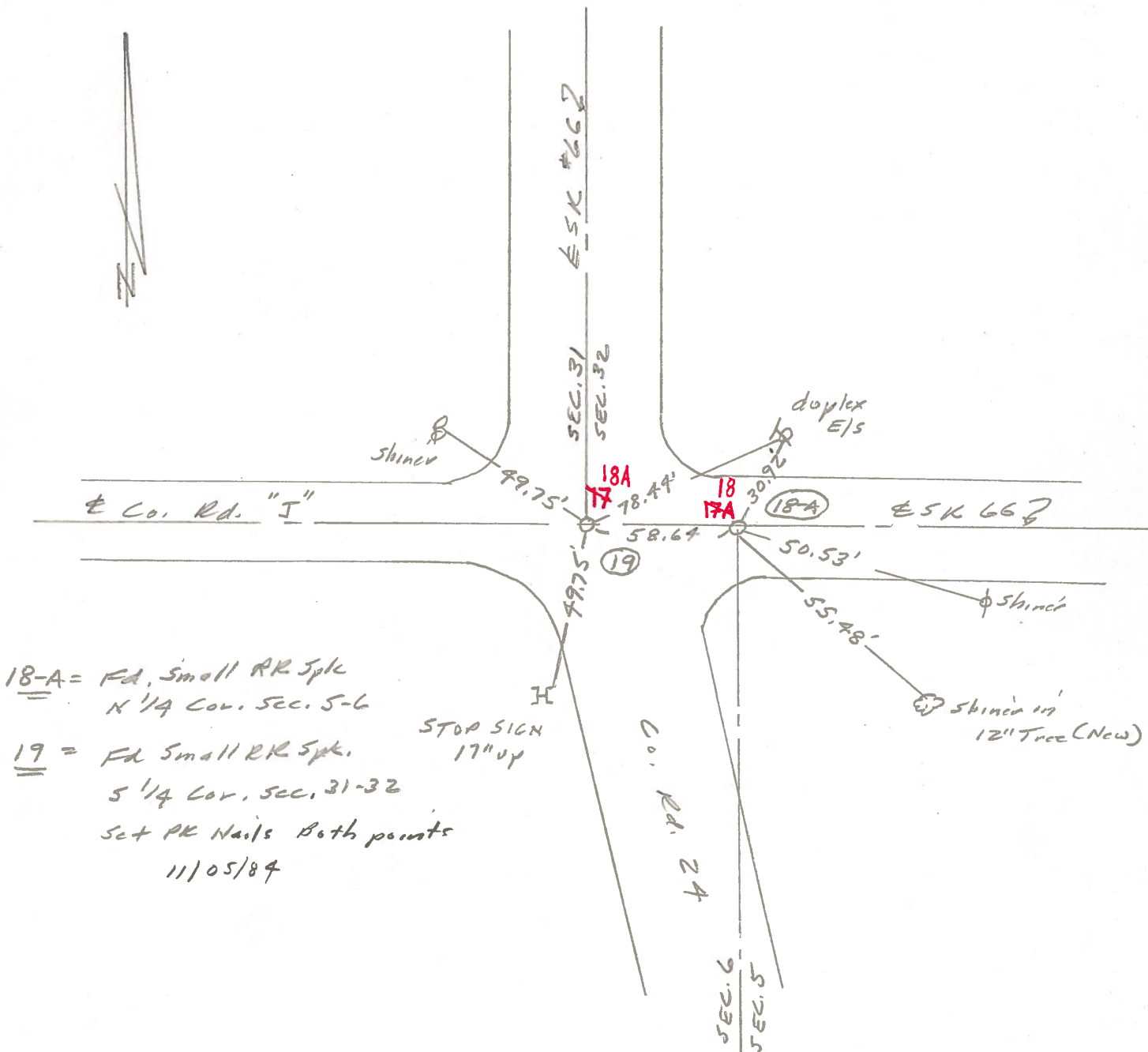
T N, R E

Personnel L. Stone



~~17~~ 18       
~~17A~~ 18A       
      
    

REF. NO. 18-A & 19



18-A = Fd. Small RR Spk  
 N 1/4 Cor. Sec. 5-6  
19 = Fd Small RR Spk.  
 S 1/4 Cor. Sec. 31-32  
 Set RR Nails Both points  
 11/05/84

PERSONNEL TITLE PERSONNEL TITLE

Red Beach

W. Knape

D. BOYLE

J. BAGDONAS

COUNTY FULTON

DATE 24-25 July '74

S. R. 66

WEATHER

SEC. Franklin Twp.

TEMP

DESCRIPTION

CONTROL POINTS

JOB NO.

NW Cor. Sec. 5 T-7-N Franklin Twp

NE Cor. Sec. 6 T-7-N R-5-E

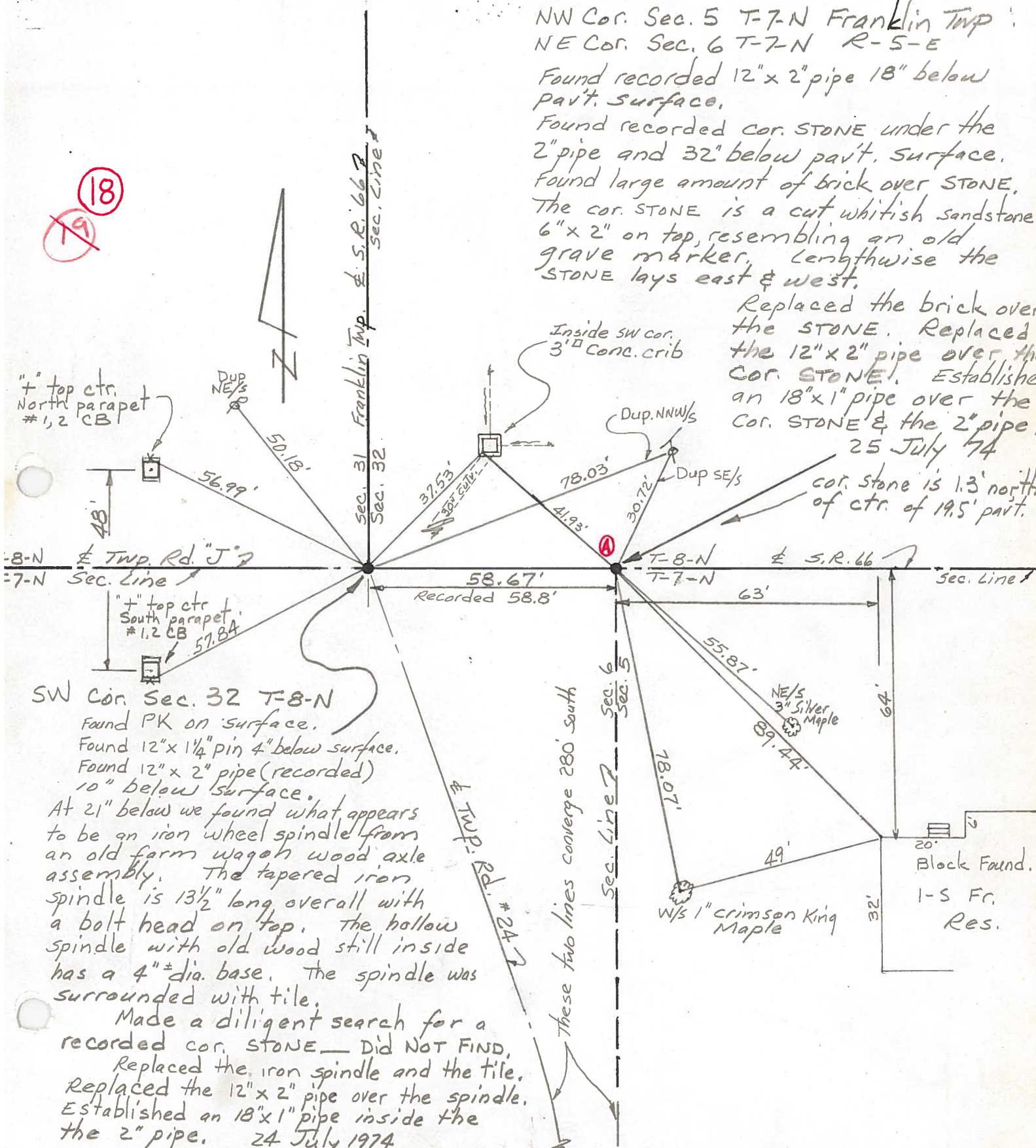
Found recorded 12"x 2" pipe 18" below pavt. surface.

Found recorded cor. STONE under the 2" pipe and 32" below pavt. surface.

Found large amount of brick over STONE. The cor. STONE is a cut whitish sandstone 6"x 2" on top, resembling an old grave marker. Lengthwise the STONE lays east & west.

Replaced the brick over the STONE. Replaced the 12"x 2" pipe over the cor. STONE. Established an 18"x 1" pipe over the cor. STONE & the 2" pipe. 25 July 74

cor. stone is 1.3' north of ctr. of 19.5' pavt.



18  
~~19~~

4" top ctr. North parapet #1,2 CB

4" top ctr. South parapet #1,2 CB

SW Cor. Sec. 32 T-8-N  
 Found PK on surface.  
 Found 12"x 1 1/4" pin 4" below surface.  
 Found 12"x 2" pipe (recorded) 10" below surface.  
 At 21" below we found what appears to be an iron wheel spindle from an old farm wagon wood axle assembly. The tapered iron spindle is 13 1/2" long overall with a bolt head on top. The hollow spindle with old wood still inside has a 4" dia. base. The spindle was surrounded with tile.

Made a diligent search for a recorded cor. STONE. Did NOT FIND.  
 Replaced the iron spindle and the tile.  
 Replaced the 12"x 2" pipe over the spindle.  
 Established an 18"x 1" pipe inside the 2" pipe. 24 July 1974

These two lines converge 280' south

Block Found. 1-S Fr. Res.

W/S 1" crimson King Maple

NE 1/4 3" Silver Maple



PERSONNEL	TITLE	PERSONNEL	TITLE
TAMSIK			
Nbusev			
Granata			
Vanyo			

COUNTY Fulton DATE July 25, 1973  
 S. R. 66 WEATHER \_\_\_\_\_  
 SEC. Franklin Twp. TEMP. \_\_\_\_\_

DESCRIPTION \_\_\_\_\_ LEFT \_\_\_\_\_ CENTER LINE \_\_\_\_\_ RIGHT \_\_\_\_\_ JOB NO. \_\_\_\_\_

