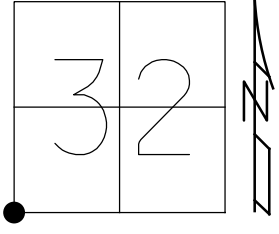


O.D.O.T. DISTRICT 2 SURVEY OFFICE (USE ONLY)

PERSONNEL _____ REFERENCE NO. 18 A SHEET 32 OF 49
 NOTES CURTIS DATE 10/13/93 ROUTE SR 66
 H.C. LOEHRKE WEATHER SUNNY COUNTY FULTON
 R.C. CANTERBURY TEMP. 50° TOWNSHIP FRANKLIN
 DWG BY NIESE PID 102801 SECTION 32
 T 7 N R 5 E

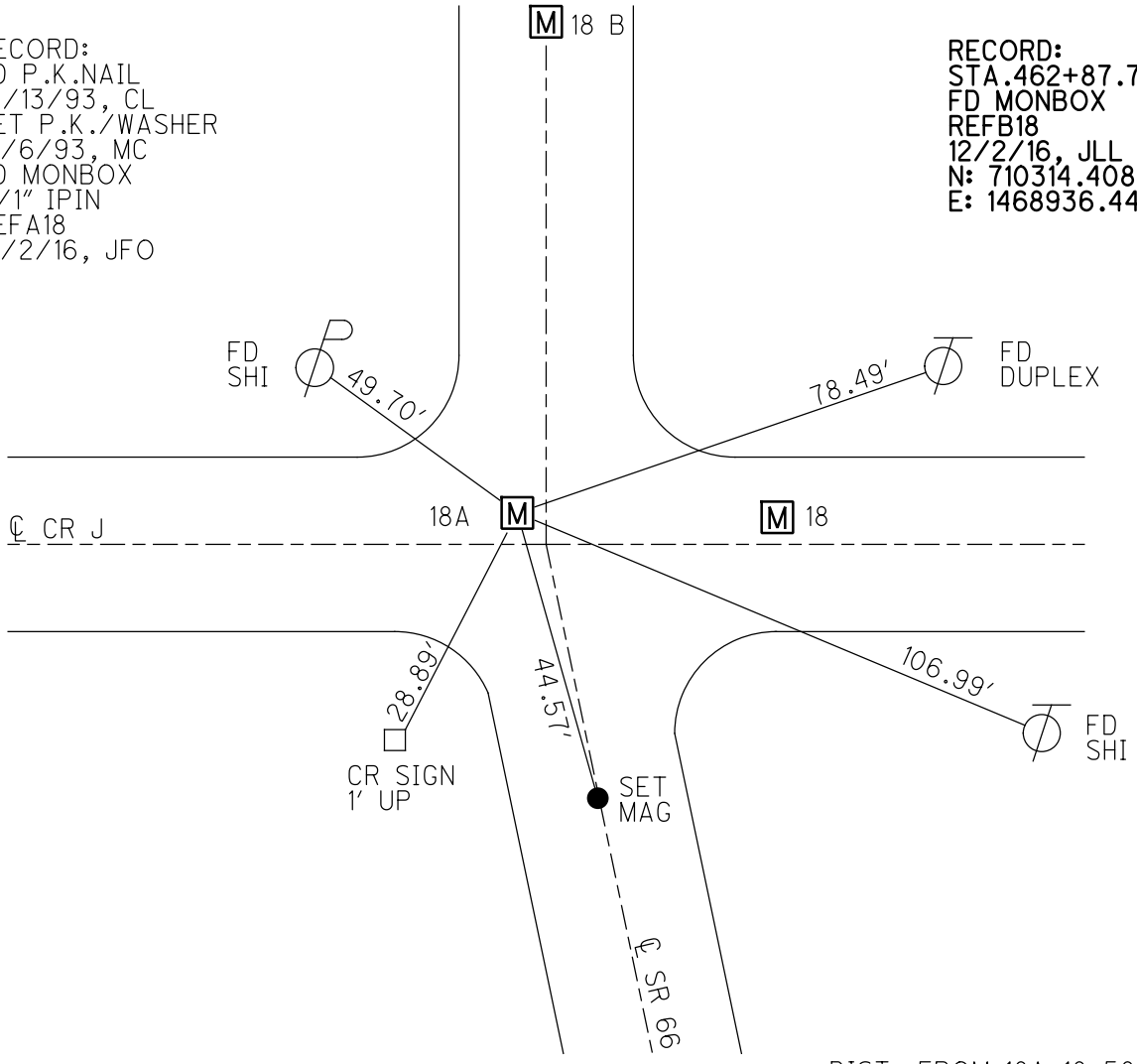
TYPE MONUMENT PK NAIL
 ON SURFACE - ~~BELOW~~ ON
 OFFSET \varnothing PAVEMENT 6.0' LT : ~~RT~~
- TO - EDGE PAVEMENT
 STATION: 460+94.4



HORZ. DATUM: NAD83(2011) GEOID: 2012A
 GRID: NORTHING: 710121.142 EASTING: 1468933.332

RECORD:
 FD P.K.NAIL
 10/13/93, CL
 SET P.K./WASHER
 12/6/93, MC
 FD MONBOX
 W/1" IPIN
 REFA18
 12/2/16, JFO

RECORD:
 STA.462+87.7
 FD MONBOX
 REFB18
 12/2/16, JLL
 N: 710314.408
 E: 1468936.449



DIST. FROM 18A-18=58.70'

O.D.O.T. DISTRICT 2 SURVEY OFFICE

PERSONNEL

REFERENCE NO. 18 & 18-A SHEET 10 OF 22

NOTES D. CURTIS

H.C. Lochrake

DATE 10-13-93

ROUTE S.R. 66

R.C. Canterbury

WEATHER Sunny

COUNTY FULTON

TEMP. +50

TOWNSHIP FRANKLIN

SECTION 5-6-31-32

T 7 N R 5 E

Set PK and Washers
12/6/93
MC

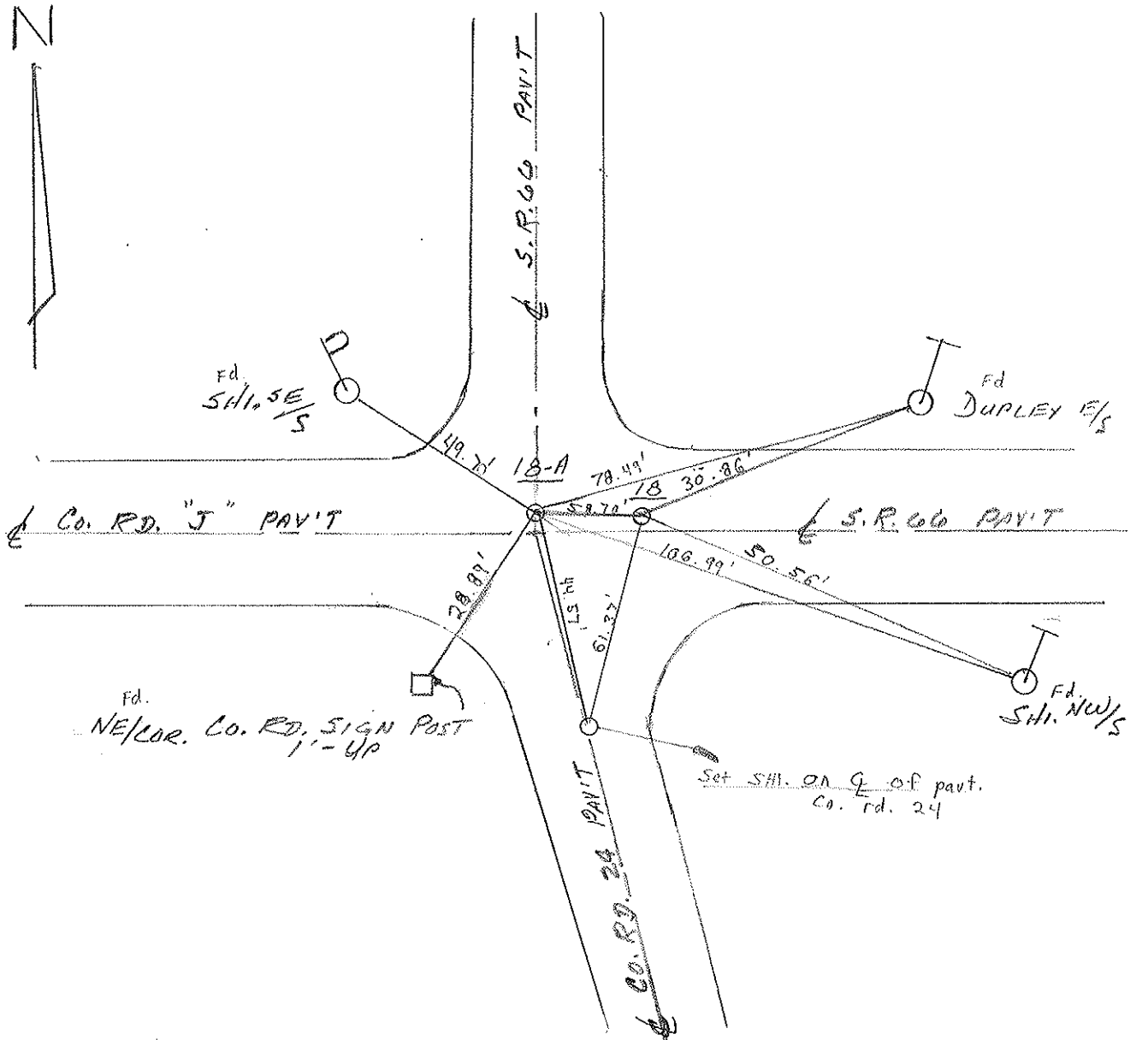
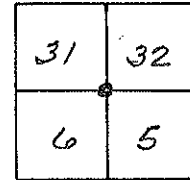
TYPE MONUMENT P.K. NAILS

ON SURFACE - BELOW ON SURFACE

LEFT - ☉ PAV'T. - RIGHT ☉ S.R. 66 PAV'T N.

TO EDGE PAVEMENT

S.L.M. 18 = 471+18 18-A = 471+76



County Fulton S.R. 6C

Date 9 Aug. 84

Township Franklin

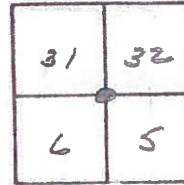
Weather Moggy

Section 5-6-31-32

Temp. 78°

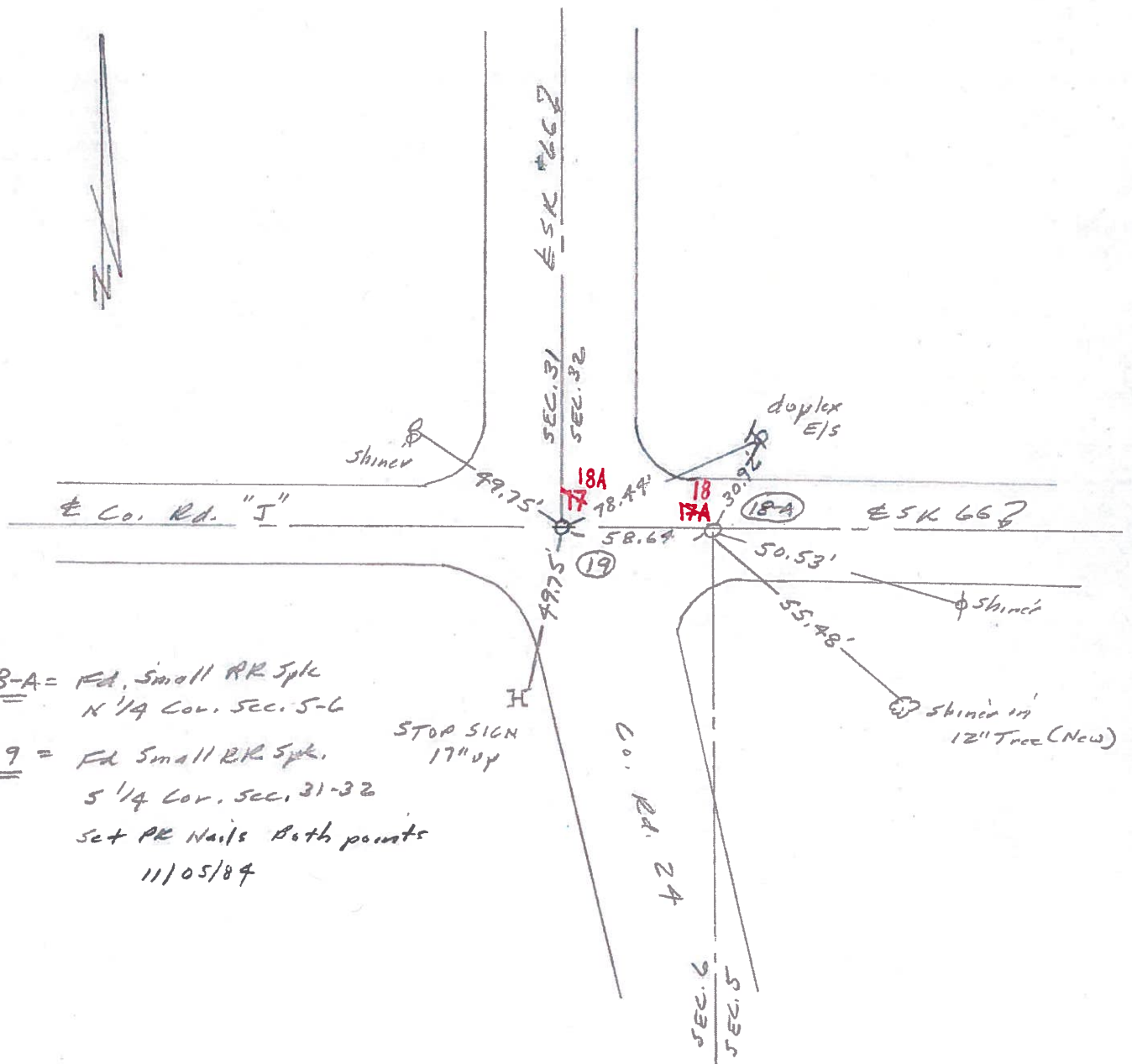
T N, R E

Personnel I. Stone



~~17~~ 18
17A 18A

REF. NO. 18-A & 19



18-A = Ed. Small RR Spk
 N 1/4 Cor. SEC. 5-6
19 = Ed Small RR Spk.
 S 1/4 Cor. SEC. 31-32
 Set RR Nails Both points
 11/05/84

STOP SIGN
17" up

PERSONNEL	TITLE	PERSONNEL	TITLE
Red Beach			
W. Knappe			
D. BOYLE			
J. BAGDONAS			

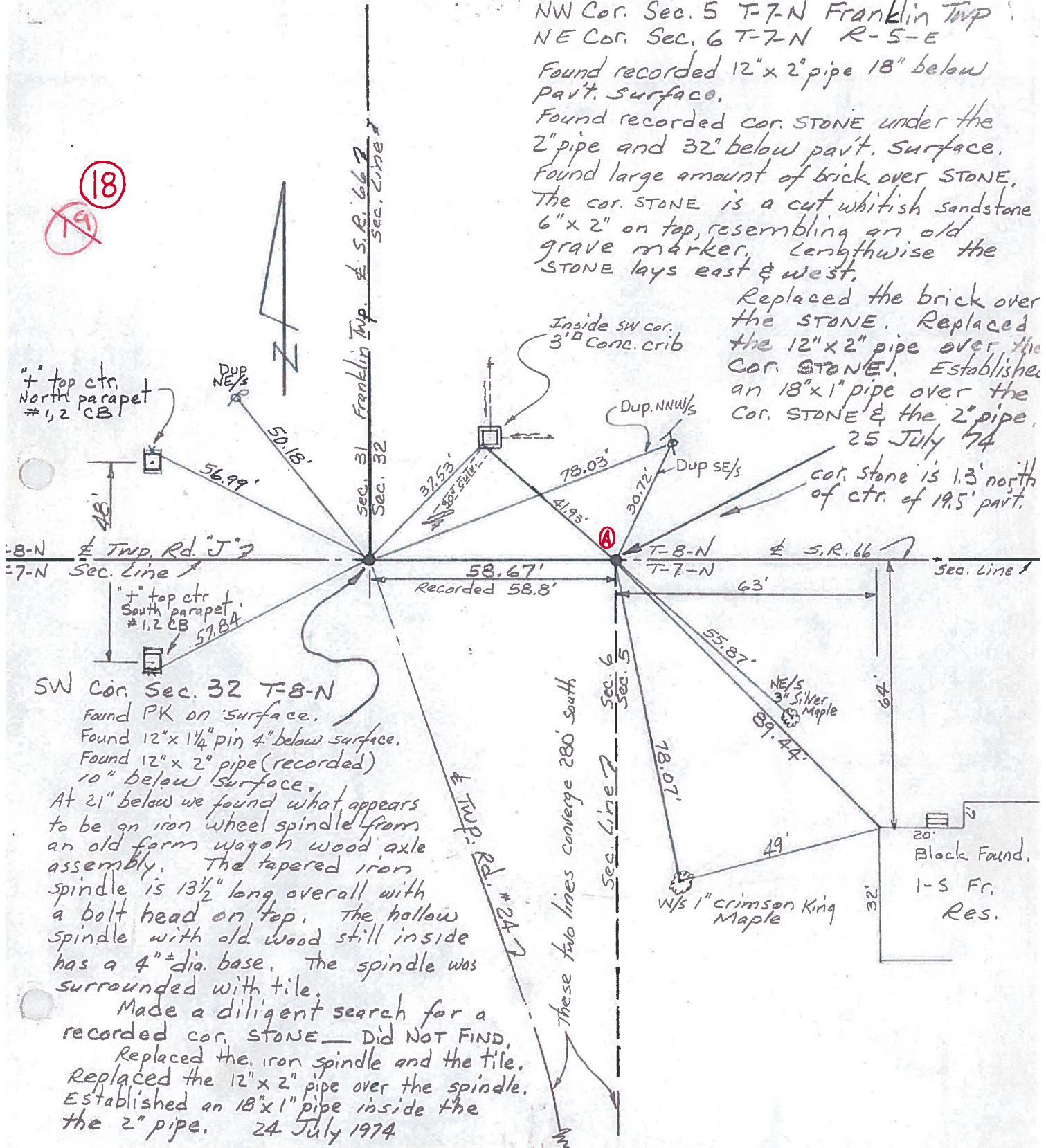
COUNTY FULTON DATE 24-25 July '74
 S. R. 66 WEATHER _____
 SEC. Franklin Twp. TEMP _____

DESCRIPTION CONTROL POINTS JOB NO. _____

NW Cor. Sec. 5 T-7-N Franklin Twp
 NE Cor. Sec. 6 T-7-N R-5-E
 Found recorded 12" x 2" pipe 18" below part. surface.
 Found recorded cor. STONE under the 2" pipe and 32" below part. surface.
 Found large amount of brick over STONE.
 The cor. STONE is a cut whitish sandstone 6" x 2" on top, resembling an old grave marker. Lengthwise the STONE lays east & west.

Replaced the brick over the STONE. Replaced the 12" x 2" pipe over the cor. STONE. Established an 18" x 1" pipe over the cor. STONE & the 2" pipe.
 25 July '74

cor. stone is 1.3' north of ctr. of 19.5' part.



18

19

+ top ctr. North parapet #1, 2 CB

DUP NE 1/4

Inside SW cor. 3" Conc. crib

Dup. NNW 1/4

Dup SE 1/4

T-8-N Twp. Rd. "J"
 T-7-N Sec. Line

+ top ctr. South parapet #1, 2 CB

SW Cor. Sec. 32 T-8-N

Found PK on surface.
 Found 12" x 1 1/4" pin 4" below surface.
 Found 12" x 2" pipe (recorded) 10" below surface.
 At 21" below we found what appears to be an iron wheel spindle from an old farm wagon wood axle assembly. The tapered iron spindle is 13 1/2" long overall with a bolt head on top. The hollow spindle with old wood still inside has a 4" dia. base. The spindle was surrounded with tile.

Made a diligent search for a recorded cor. stone. Did NOT FIND.
 Replaced the iron spindle and the tile.
 Replaced the 12" x 2" pipe over the spindle.
 Established an 18" x 1" pipe inside the 2" pipe. 24 July 1974

These two lines coverage 280' south

NE 1/4 3" Silver Maple

w/s 1" crimson King Maple

Block Found.
 1-S Fr. Res.