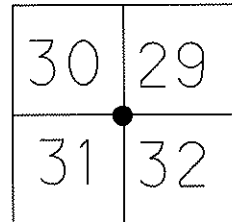


O.D.O.T. DISTRICT 2 SURVEY OFFICE (USE ONLY)

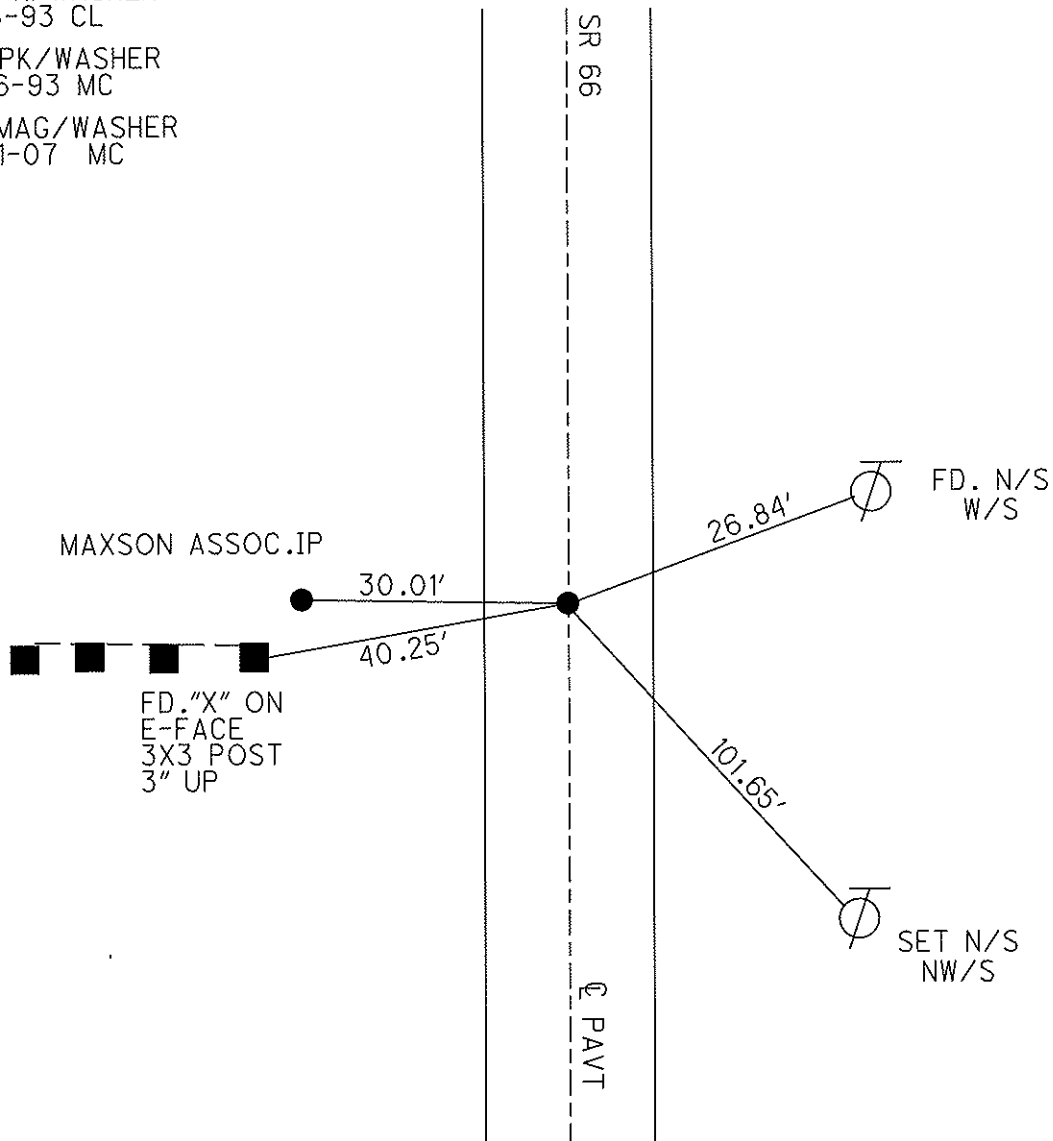
PERSONNEL \_\_\_\_\_ REFERENCE NO. 20 SHEET 2 OF 12  
 NOTES HOUESHELL DATE 06-19-07 ROUTE SR 66  
 H.C. ROUSOS WEATHER CLOUDY COUNTY FULTON  
 R.C. HOUESHELL TEMP. +80° TOWNSHIP FRANKLIN  
 \_\_\_\_\_ SECTION 29-30-31-32  
 \_\_\_\_\_ T 8 N R 5 E

TYPE MONUMENT PK/WASHER  
 ON SURFACE - ~~BELOW~~ ON SURFACE  
 LEFT - ~~C PAV'T~~ - RIGHT 1.0' RT.  
9.2 TO RT. EDGE PAVEMENT  
 S.L.M. 515+85 (SV5)



Grid: Northing: 715397.424 Easting: 1469041.925

FD. PK/WASHER  
 10-13-93 CL  
 SET PK/WASHER  
 12-06-93 MC  
 SET MAG/WASHER  
 08-31-07 MC



O.D.O.T. DISTRICT 2 SURVEY OFFICE (USE ONLY)

PERSONNEL

REFERENCE NO. 20

SHEET 34 OF 49

NOTES RHOADES  
 H.C. O'DONNELL  
 R.C. TRENKA  
HAGEMEYER

DATE 7/3/18  
 WEATHER SUNNY  
 TEMP. 84°

ROUTE SR 66  
 COUNTY FULTON  
 TOWNSHIP FRANKLIN  
 SECTION 32

DWG BY NIESE PID 102801

T 8 N R 5 E

TYPE MONUMENT MAG/WASHER

ON SURFACE - ~~BELOW~~ ON

OFFSET CL PAVEMENT 1.0' ~~ET~~ : RT  
9.2' TO RT EDGE PAVEMENT

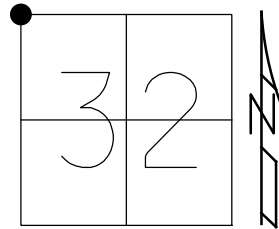
STATION: 513+71.9

HORZ.DATUM: NAD83(2011)

GEOID: 2012A

GRID: NORTHING: 715397.477

EASTING: 1469042.048

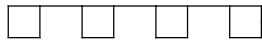


RECORD:  
 FD PK/WASHER  
 10/13/93, CL  
 SET PK/WASHER  
 12/6/93, MC  
 FD PK/WASHER  
 6/19/07, TMR  
 SET MAG/WASHER  
 8/31/07, MC  
 FD MAG/WASHER  
 REF20  
 12/2/16  
 1" DOWN  
 7/18/19, JFO

MAXSON  
 ASSOC. IP

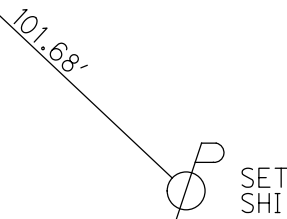
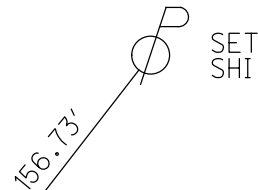
30.01'  
 (REC)

40.25'  
 (REC)



FD "X"  
 3X3 POST  
 3" UP

CL SR 66



# O.D.O.T. DISTRICT 2 SURVEY OFFICE

PERSONNEL

REFERENCE NO. 20

SHEET 12 OF 22

NOTES J. CURTIS

H.C. Loehrke

DATE 10-13-93

ROUTE S.P. 600

R.C. Canterbury

WEATHER Sunny

COUNTY FULTON

TEMP. + 50

TOWNSHIP FRANKLIN

SECTION 29-30-31-32

T B N R S E

TYPE MONUMENT P.K. NAIL

Set PK/Washer

12/6/93

MC

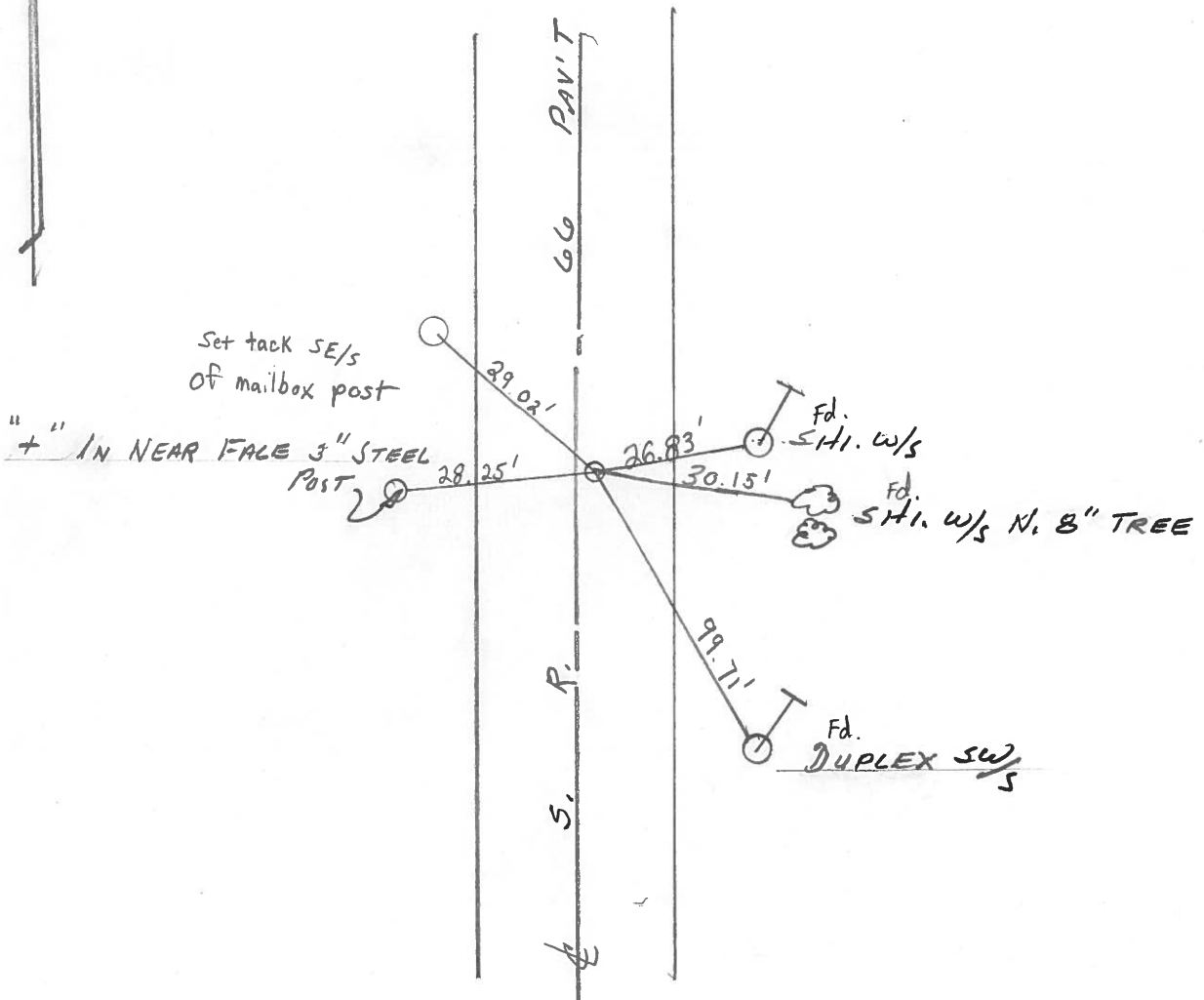
ON SURFACE - ~~BELOW~~ ON SURFACE

~~LEFT -~~ PAV'T. - RIGHT 10 RIGHT

9.2 TO PT. EDGE PAVEMENT

S.L.M. 524 + 83

30	29
31	32



County Fulton S.R. 66

Date 9 Aug. 84

Township Franklin

Weather Muggy

Section 29-30-31-32

Temp. 79°

T N, R E

Personnel I. Stone

P. Newson

R. Michalek

20

30	29
31	32



SLM STA. 524+67

REF. NO. 21



○  
 "x" near face  
 3" round  
 steel post

25.74' - 30.24'

#66

158.00'

150.30'

Shiner

Shiner in  
6" tree

Shiner

Fd. Small RR Spk. Surface  
 Set RR Nail 11/05/84

#52

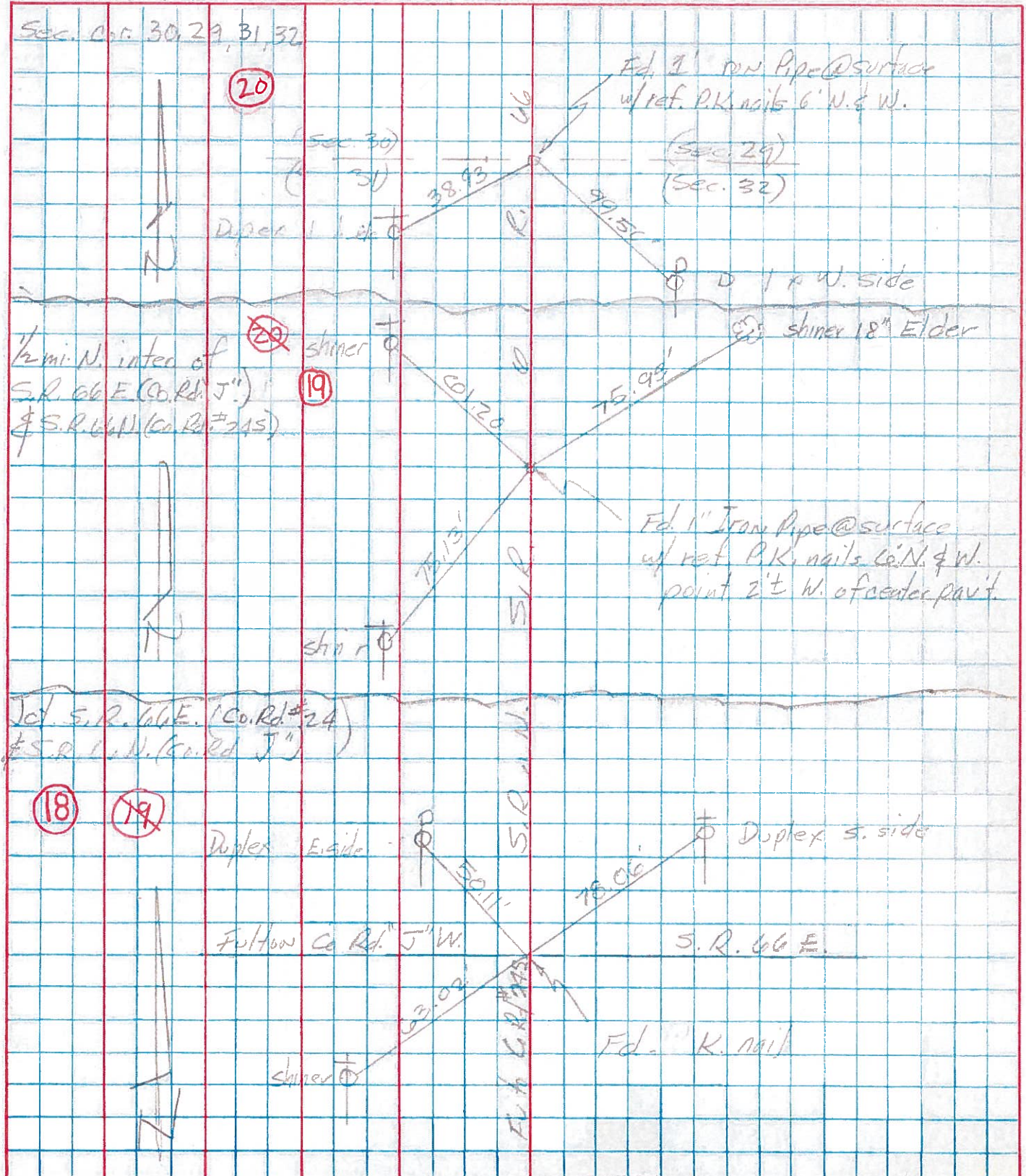
PERSONNEL	TITLE	PERSONNEL	TITLE
TRANSK.			
House			
Granata			
Wauvo			

COUNTY Fulton DATE July 25, 1973

S. R. 66 WEATHER \_\_\_\_\_

SEC. Franklin Twp. TEMP. \_\_\_\_\_

DESCRIPTION \_\_\_\_\_ LEFT \_\_\_\_\_ CENTER LINE \_\_\_\_\_ RIGHT \_\_\_\_\_ JOB NO. \_\_\_\_\_





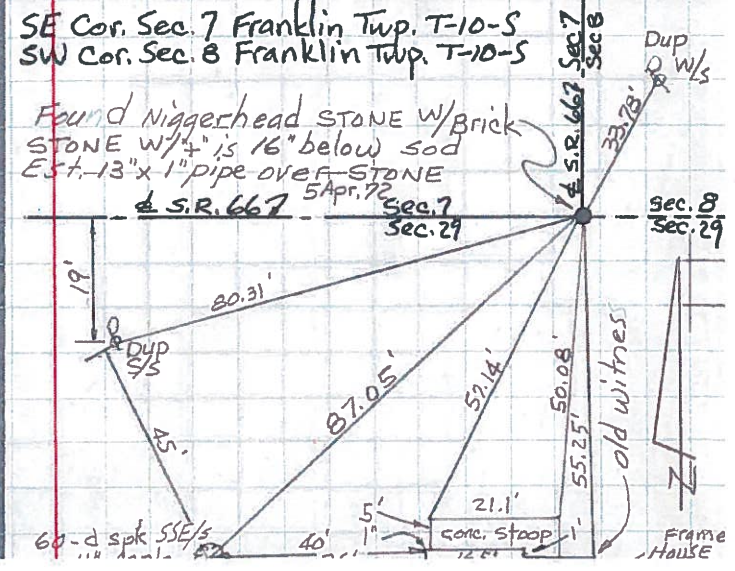
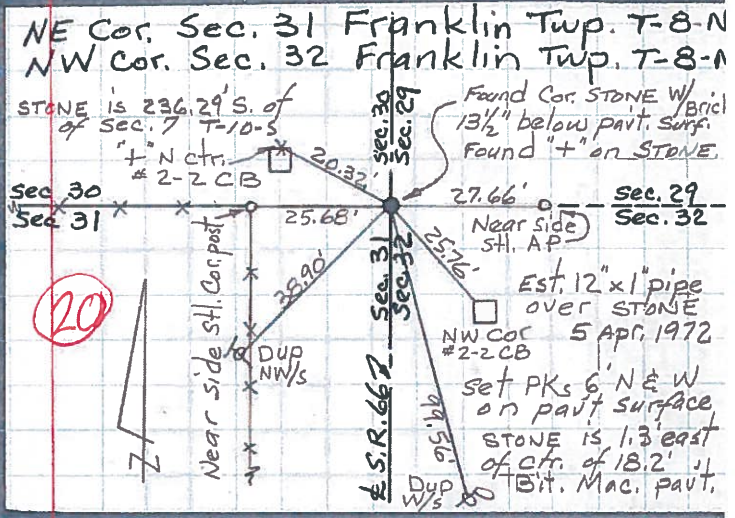
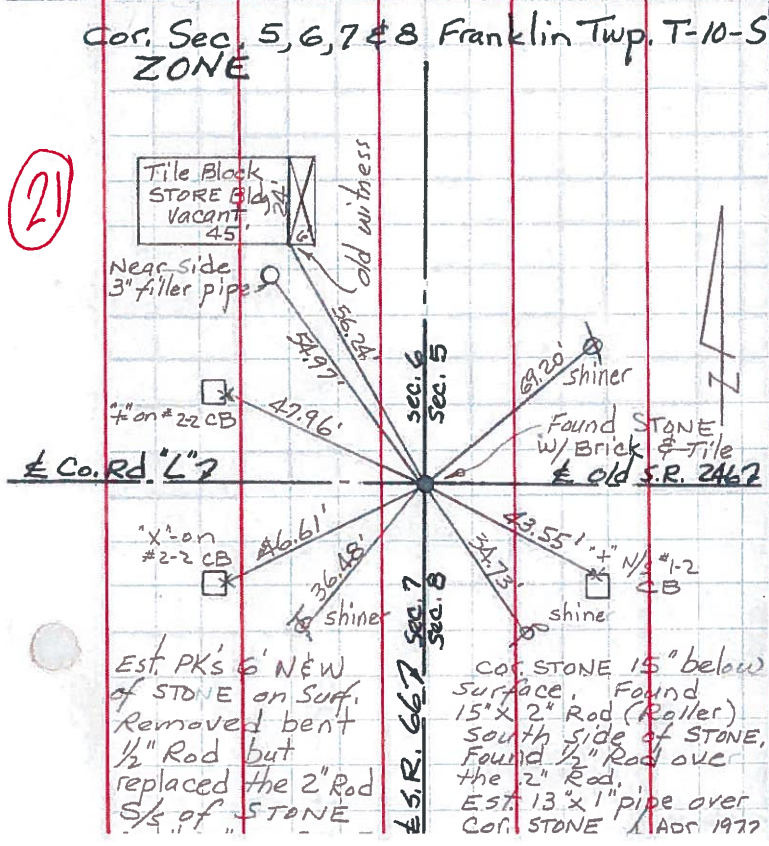
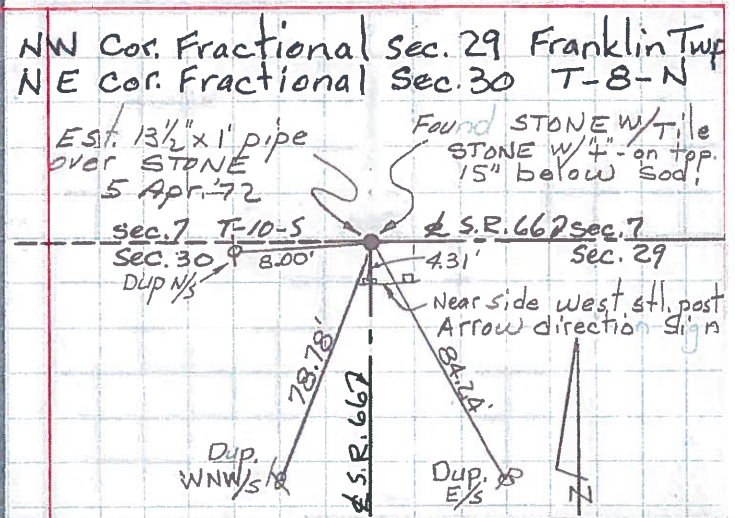
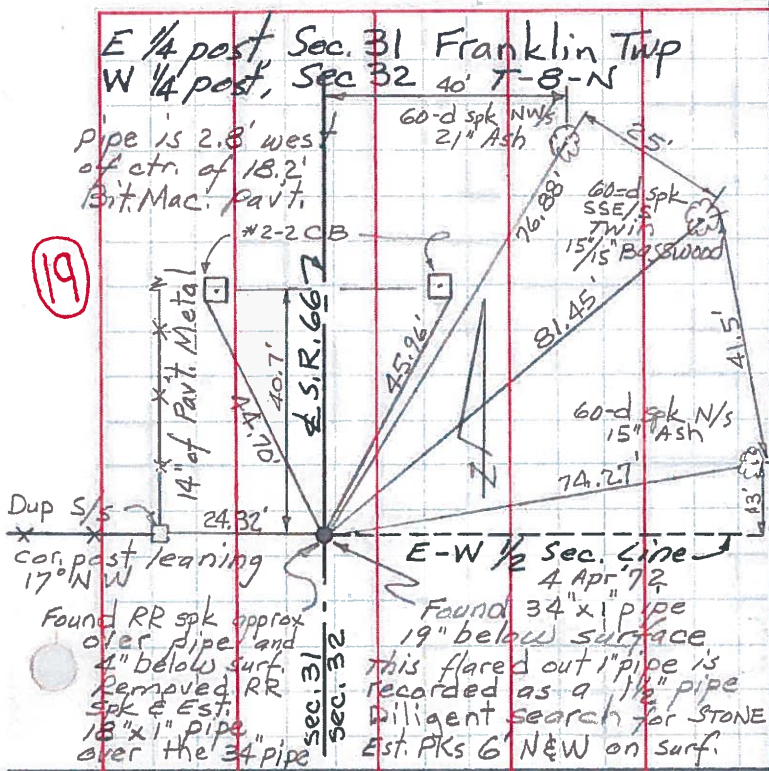
PERSONNEL TITLE PERSONNEL TITLE  
 Red Beach  
 Newcomb  
 Knappe

COUNTY Fulton DATE Apr. 1972

S. R. 66 WEATHER \_\_\_\_\_

SEC. Franklin Twp. TEMP. \_\_\_\_\_

DESCRIPTION Reverse Curve P/W Data JOB NO. \_\_\_\_\_





PERSONNEL TITLE PERSONNEL TITLE COUNTY FULTON DATE Apr. 1972  
 Red Beachy  
 Newcomb  
 Knape  
 S. R. 66 WEATHER  
 SEC. FRANKLIN TWP. TEMP.

DESCRIPTION PERTINENT SECTION LINE DETAIL JOB NO.

