

O.D.O.T. DISTRICT 2 SURVEY OFFICE (USE ONLY)

PERSONNEL _____

REFERENCE NO. 20 A

SHEET 35 OF 49

NOTES RED BEACH

DATE 4/5/72

ROUTE SR 66

H.C. NEWCOMB

WEATHER -

COUNTY FULTON

R.C. KNAPE

TEMP. -

TOWNSHIP FRANKLIN

SECTION 30

DWG BY NIESE

PID 102801

T 8 N R 5 E

TYPE MONUMENT 13 1/2" X 1" PIPE OVER STONE

~~ON SURFACE~~ - BELOW 18"

OFFSET \odot PAVEMENT - LT : RT

- TO - EDGE PAVEMENT

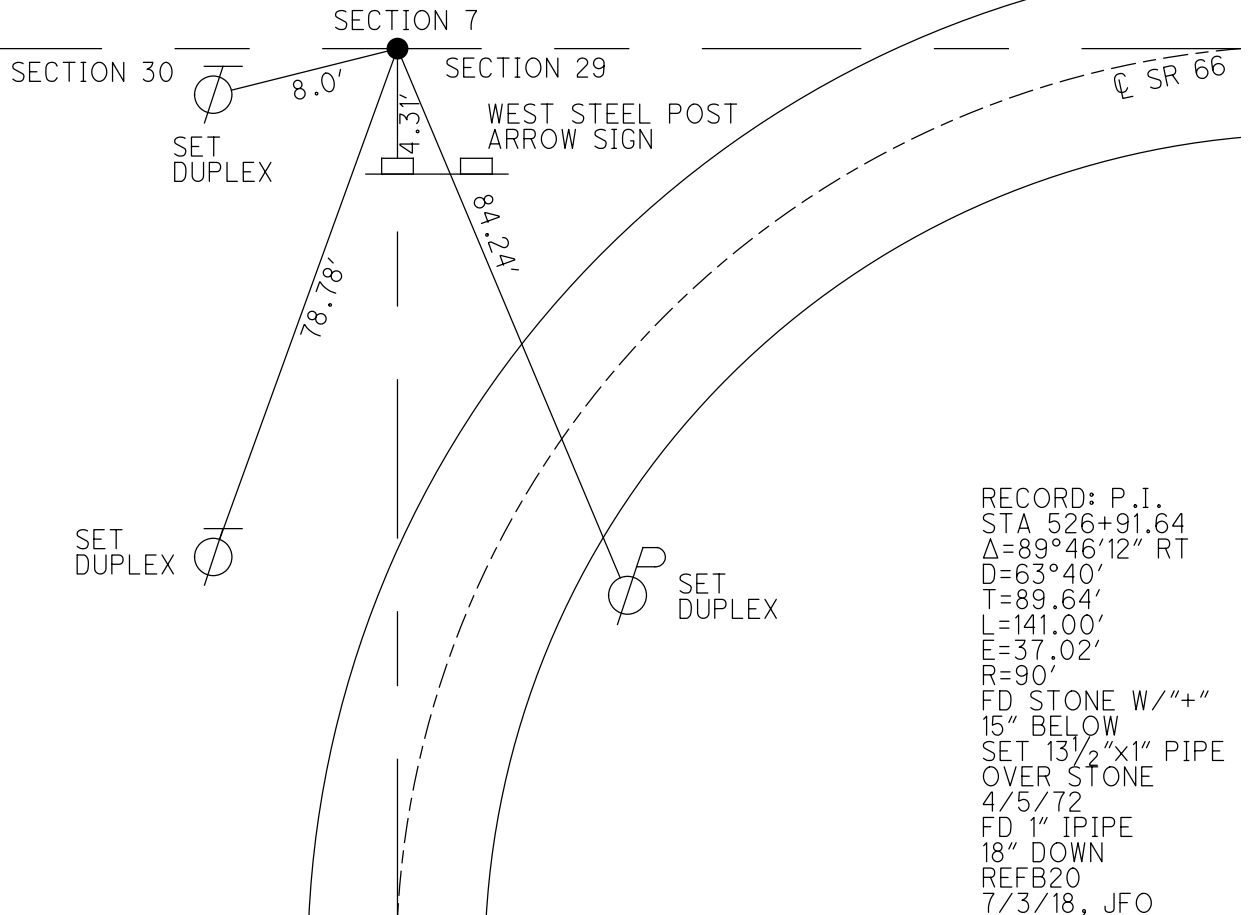
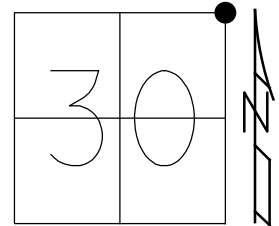
STATION: 516+08.27

HORZ.DATUM: NAD83(2011)

GEOID: 2012A

GRID: NORTHING: 715633.840

EASTING: 1469046.810



RECORD: P.I.
 STA 526+91.64
 $\Delta=89^{\circ}46'12''$ RT
 D=63°40'
 T=89.64'
 L=141.00'
 E=37.02'
 R=90'
 FD STONE W/"+"
 15" BELOW
 SET 13 1/2"x1" PIPE
 OVER STONE
 4/5/72
 FD 1" IPIPE
 18" DOWN
 REFB20
 7/3/18, JFO

PERSONNEL TITLE PERSONNEL TITLE

Red Beach
Newcomb
Knap

COUNTY Fulton

DATE Apr '72

S. R. 66

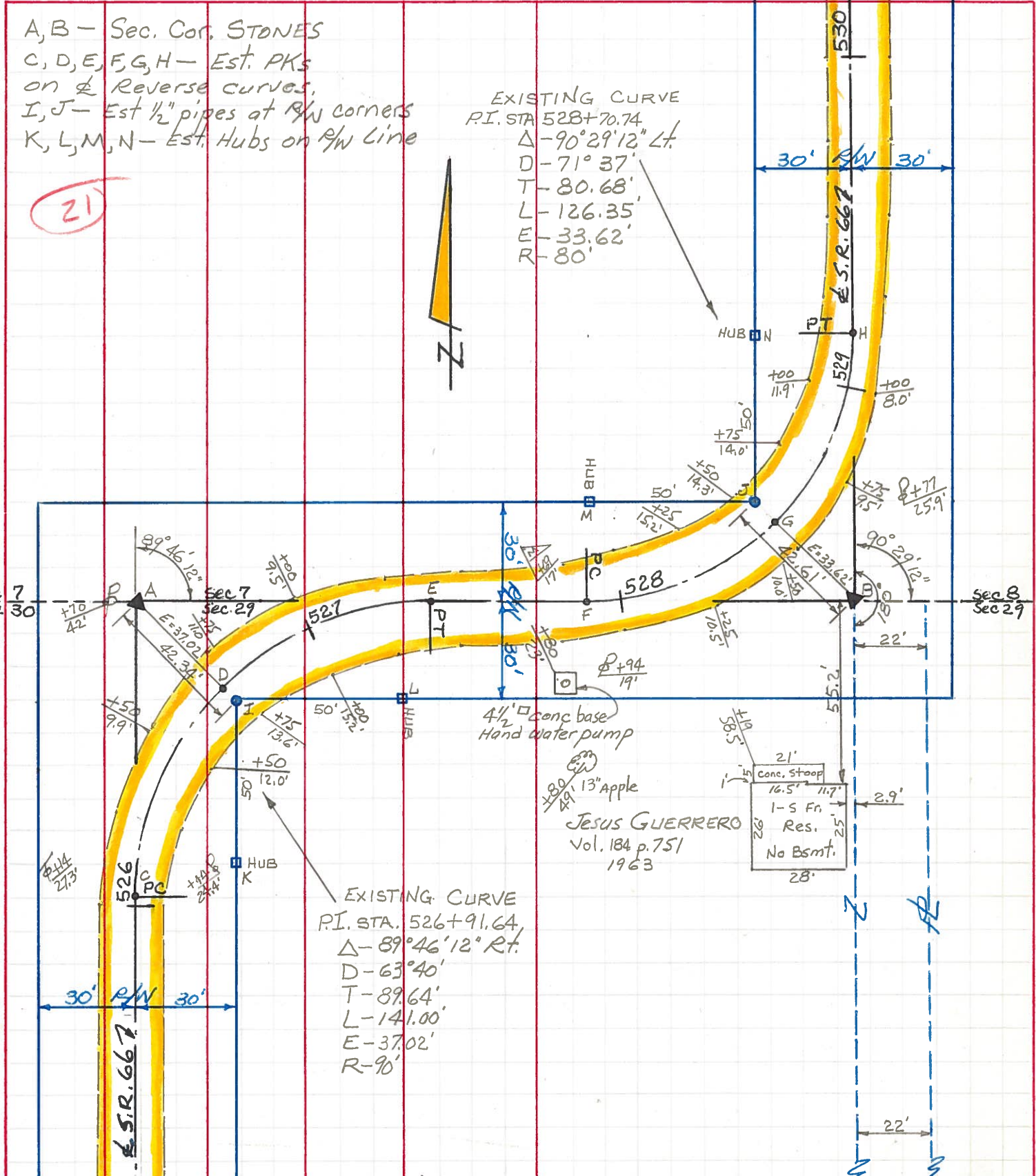
WEATHER

SEC. Franklin Twp.

TEMP.

DESCRIPTION EXISTING PAVEMENT DETAIL

JOB NO.



A, B - Sec. Cor. STONES
C, D, E, F, G, H - Est. PKs
on \neq Reverse curves.
I, J - Est 1/2" pipes at NW corners
K, L, M, N - Est. Hubs on NW Line

EXISTING CURVE
P.I. STA 528+70.74
 Δ - 90°29'12" Lt.
D - 71°37'
T - 80.68'
L - 126.35'
E - 33.62'
R - 80'

EXISTING CURVE
P.I. STA. 526+91.64
 Δ - 89°46'12" Rt.
D - 63°40'
T - 89.64'
L - 141.00'
E - 37.02'
R - 90'

Jesus GUERRERO
Vol. 184 p. 751
1963

21'
Conc. stoop
16.5' 11.7'
1-5 Fr.
Res.
No Bsmt.
28'

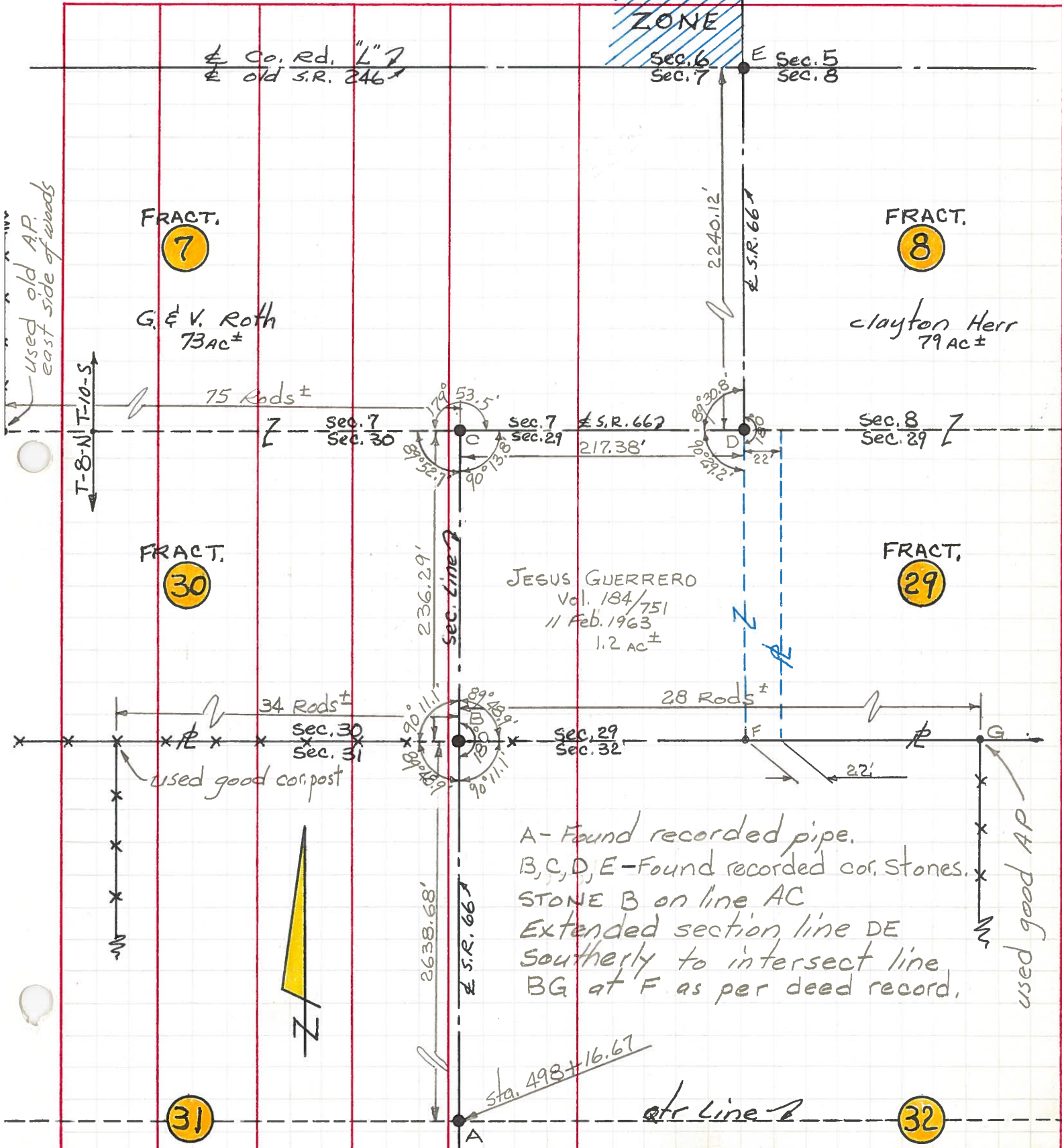
4 1/2" conc base
Hand water pump

13" Apple

21

PERSONNEL TITLE PERSONNEL TITLE COUNTY FULTON DATE Apr. 1972
 Red Beachy
 Newcomb
 Knape
 S. R. 66 WEATHER
 SEC. FRANKLIN TWP. TEMP.

DESCRIPTION PERTINENT SECTION LINE DETAIL JOB NO.



JESUS GUERRERO
 Vol. 184/751
 11 Feb. 1963
 1.2 AC ±

A - Found recorded pipe.
 B, C, D, E - Found recorded cor. stones.
 STONE B on line AC
 Extended section line DE
 southerly to intersect line
 BG at F as per deed record.

used old AP.
 east side of woods

used good AP

31

32

sta. 498+16.67
 etc Line 2