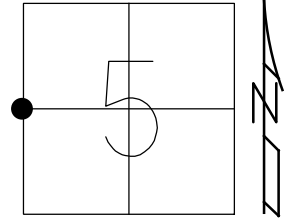


O.D.O.T. DISTRICT 2 SURVEY OFFICE (USE ONLY)

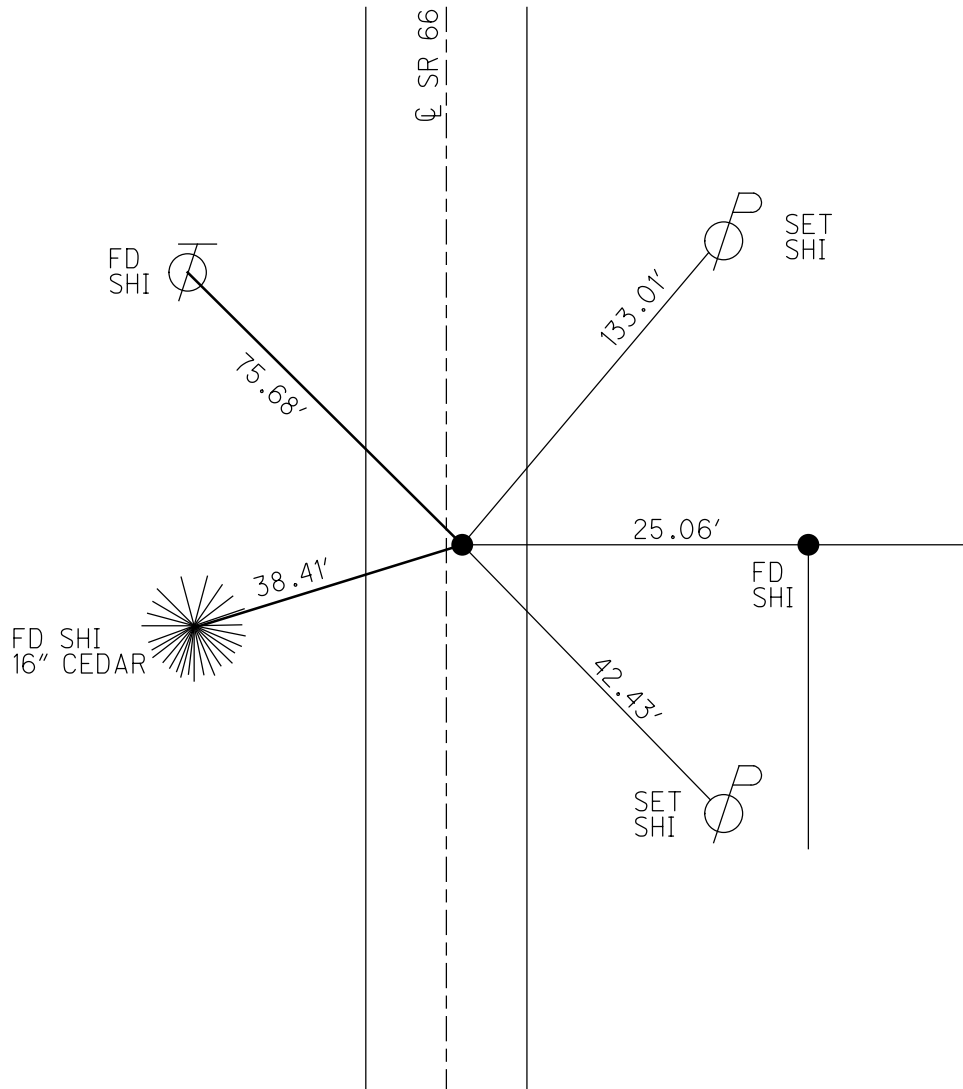
PERSONNEL _____ REFERENCE NO. 22 SHEET 39 OF 49
 NOTES RHOADES DATE 7/3/18 ROUTE SR 66
 H.C. O'DONNELL WEATHER CLOUDY COUNTY FULTON
 R.C. TRENKA TEMP. 86° TOWNSHIP FRANKLIN
 HAGEMEYER SECTION 5
 DWG BY NIESE PID 102801 T 10 N R 5 E

TYPE MONUMENT MAG/WASHER
 ON SURFACE - ~~BELOW~~ ON _____
 OFFSET ☉ PAVEMENT 3.0' ~~RT~~ : RT
7.8' TO RT EDGE PAVEMENT
 STATION: 566+24.6



HORZ. DATUM: NAD83(2011) GEOID: 2012A
 GRID: NORTHING: 720519.562 EASTING: 1469315.131

RECORD:
 FD PK/WASHER
 10/13/93, CL
 SET PK/WASHER
 12/6/93, MC
 FD PK/WASHER
 6/19/07, TMR
 SET MAG/WASHER
 8/31/07, MC
 FD MAG/WASHER
 REF 22
 12/2/16
 FD 1" DOWN
 7/18/19, JFO



O.D.O.T. DISTRICT 2 SURVEY OFFICE (USE ONLY)

PERSONNEL _____

REFERENCE NO. 22

SHEET 4 OF 12

NOTES HOUESHELL

DATE 06-19-07

ROUTE SR 66

H.C. ROUSOS

WEATHER CLOUDY

COUNTY FULTON

R.C. HOUESHELL

TEMP. +80°

TOWNSHIP FRANKLIN

SECTION 5

T 10 N R 5 E

TYPE MONUMENT PK/WASHER

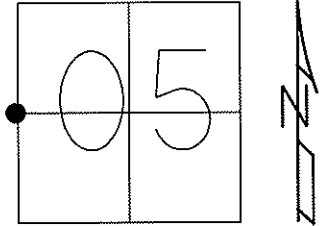
ON SURFACE - ~~BELOW~~ ON SURFACE _____

LEFT ~~PAVT~~ - RIGHT 3.0' RT.

7.8' TO RT. EDGE PAVEMENT

S.L.M. 568+35 (SV7)

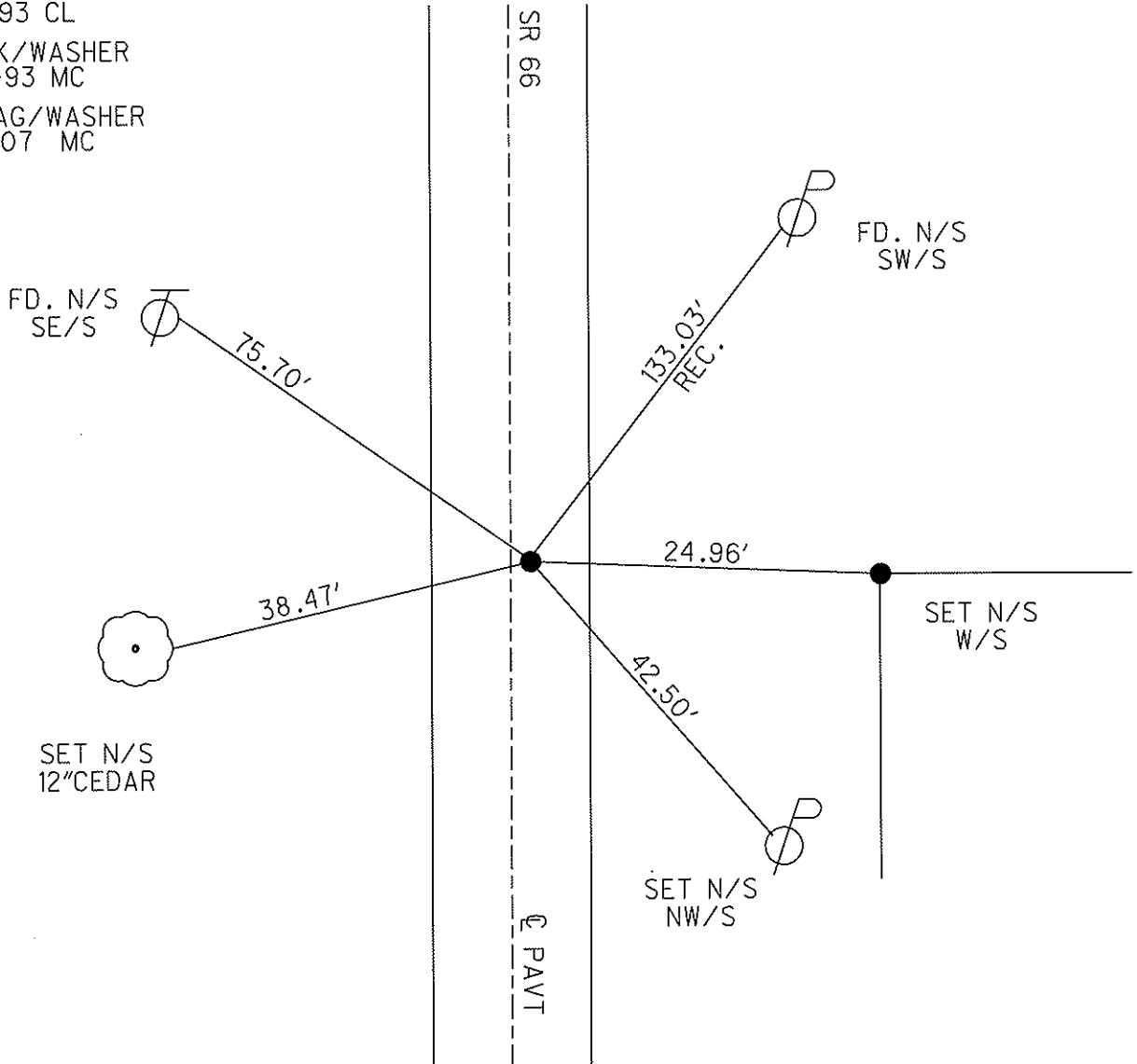
Grid: Northing: 720519.578 Easting: 1469315.058



FD. PK/WASHER
10-13-93 CL

SET PK/WASHER
12-06-93 MC

SET MAG/WASHER
08-31-07 MC



O.D.O.T. DISTRICT 2 SURVEY OFFICE

PERSONNEL

REFERENCE NO. 22

SHEET 14 OF 22

NOTES J. CURTIS

H.C. Loehrke

DATE 10-12-93

ROUTE S.R. 66

R.C. Canterbury

WEATHER Cloudy

COUNTY FULTON

TEMP. +50

TOWNSHIP FRANKLIN

SECTION 5

T 10 S R 5 E

TYPE MONUMENT P.K. NAIL

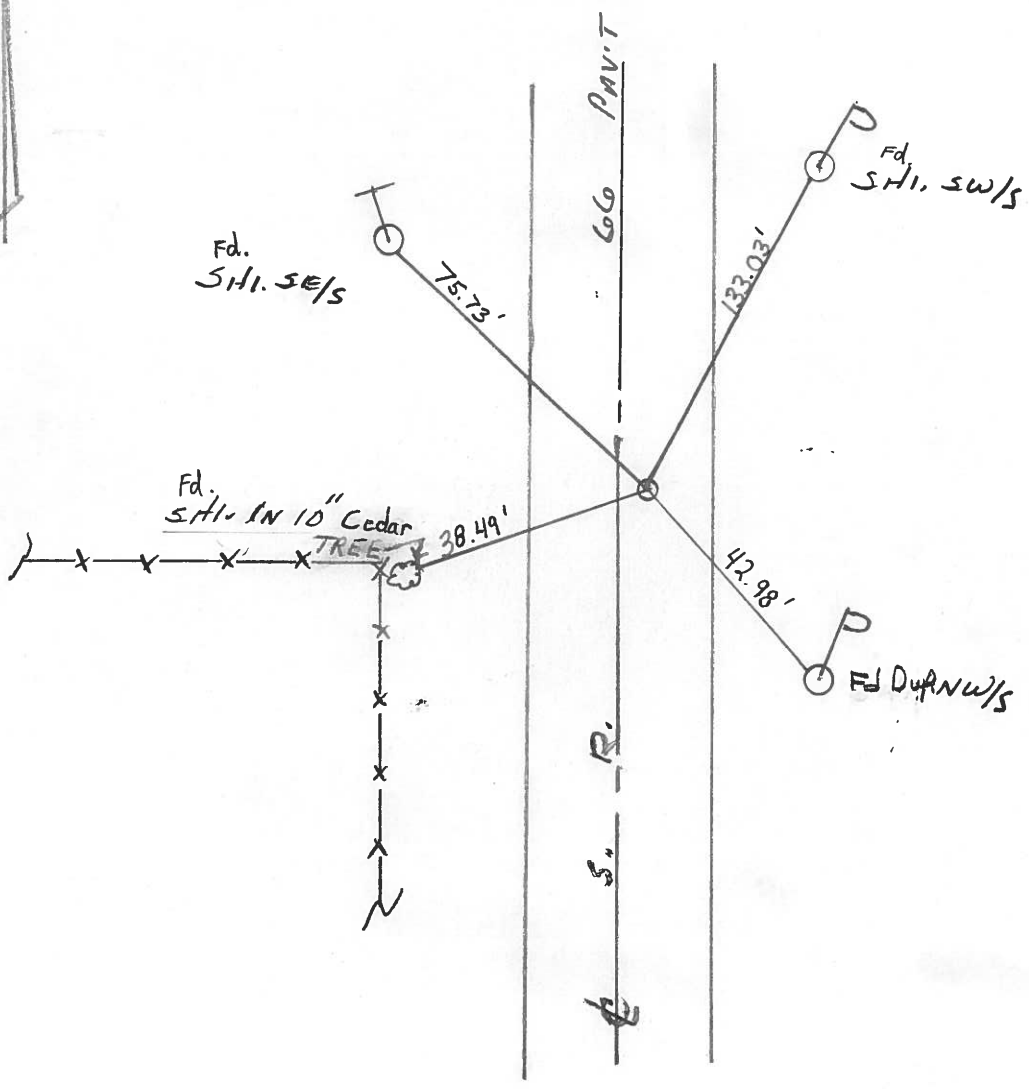
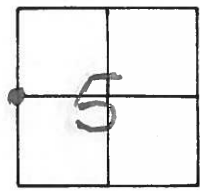
Set PK/Washer
12/6/93
MC

ON SURFACE - ~~BELOW~~ ON SURFACE

LEFT- & PAV'T. - RIGHT 3.4' RIGHT

7.8' TO RT. EDGE PAVEMENT

S.L.M. 577 + 24



O.D.O.T. DISTRICT 2 SURVEY OFFICE

PERSONNEL

REFERENCE NO. 23

SHEET 1 OF 3

NOTES 1. Stone

H.C. D. Curtis

DATE 10 Aug. 89

ROUTE SR#66

R.C. J. Hausholder

WEATHER Fair

COUNTY Fulton

P. DelBene

TEMP. 74°

TOWNSHIP Franklin

SECTION 5

T R

TYPE MONUMENT PK Nail

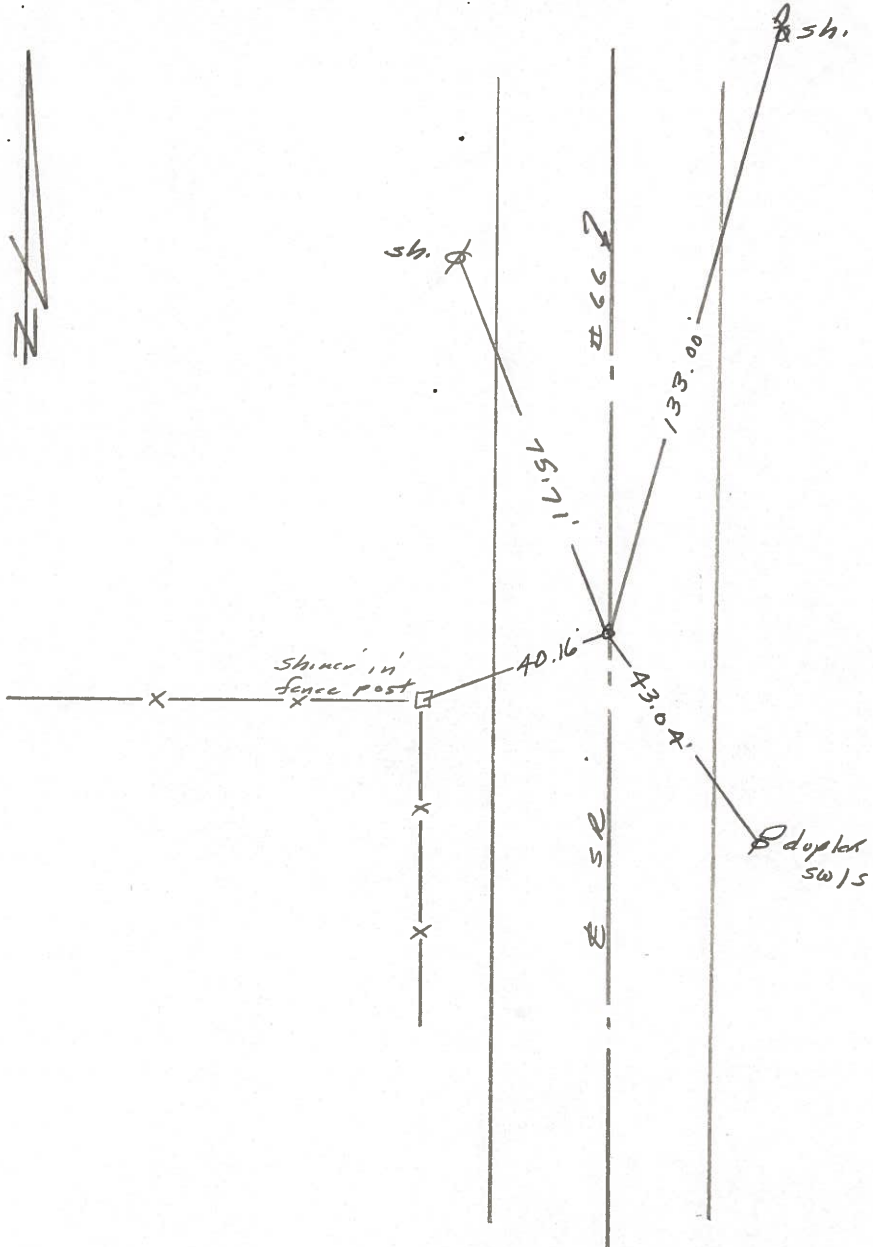
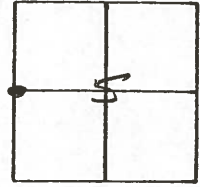
ON SURFACE - BELOW Surface

LEFT- & PAV'T. - RIGHT

TO EDGE PAVEMENT

S.L.M. 577+19.80

22



County Fulton S.R. 66

Date 8 Aug. 84

Township Franklin

Weather Muggy

Section 5

Temp. 79°

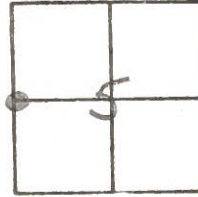
T N, R E

Personnel I. Stone

P. Newser

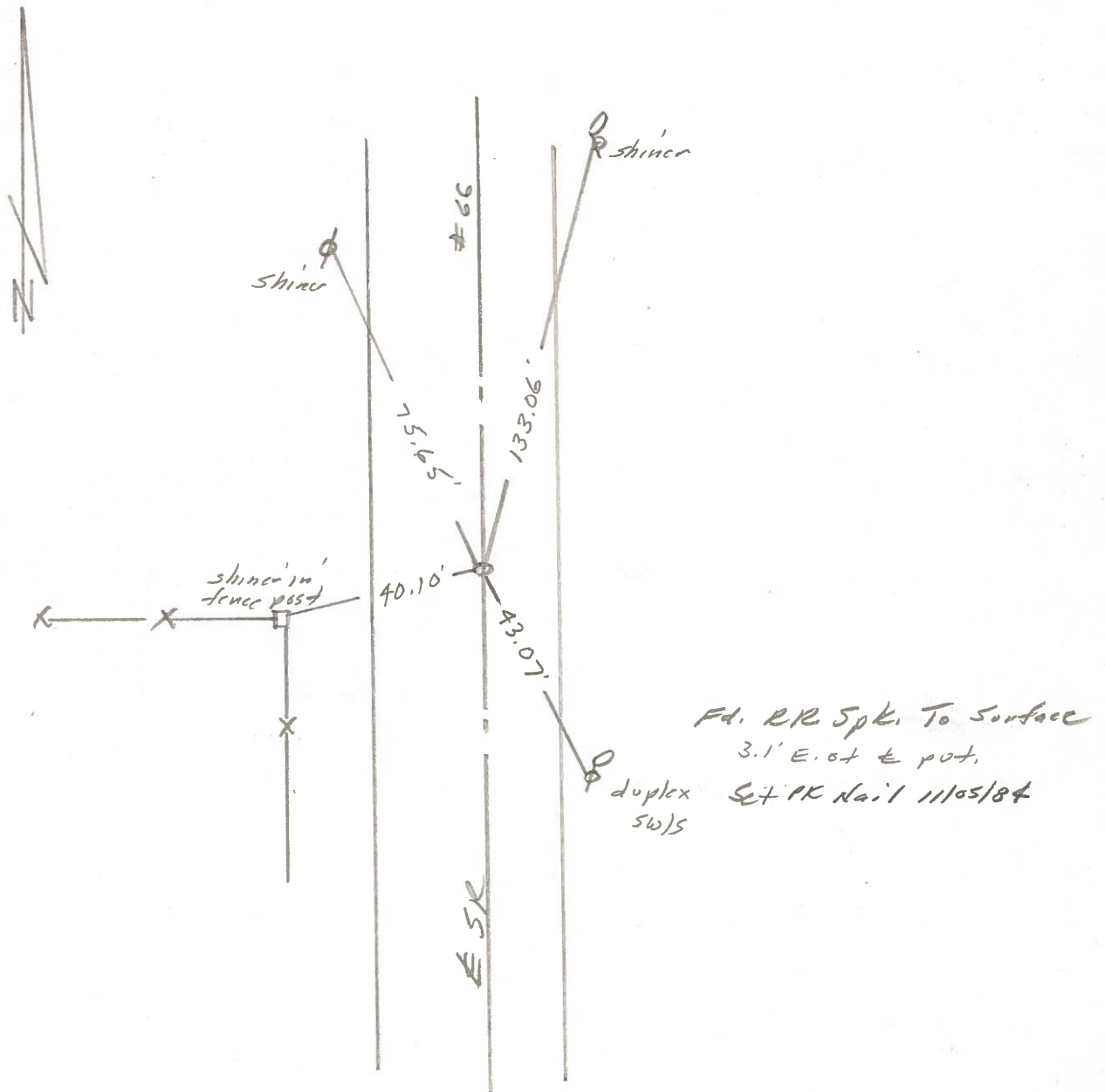
R. Michaelale

27



SLM STA. 577+26

REF. NO. 23



PERSONNEL TITLE PERSONNEL TITLE

Red Beach

W. Knape

D. Boyle

J. Bagdonas

COUNTY Fulton

DATE July 1974

S. R. 66

WEATHER

SEC. Franklin - Gorham Twp.

TEMP

CONTROL POINTS

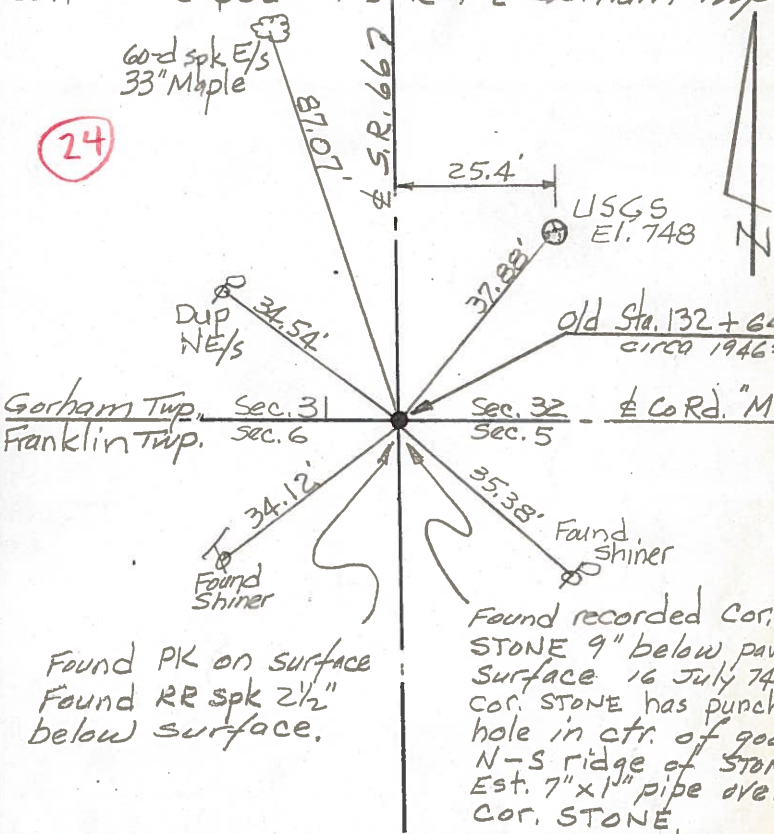
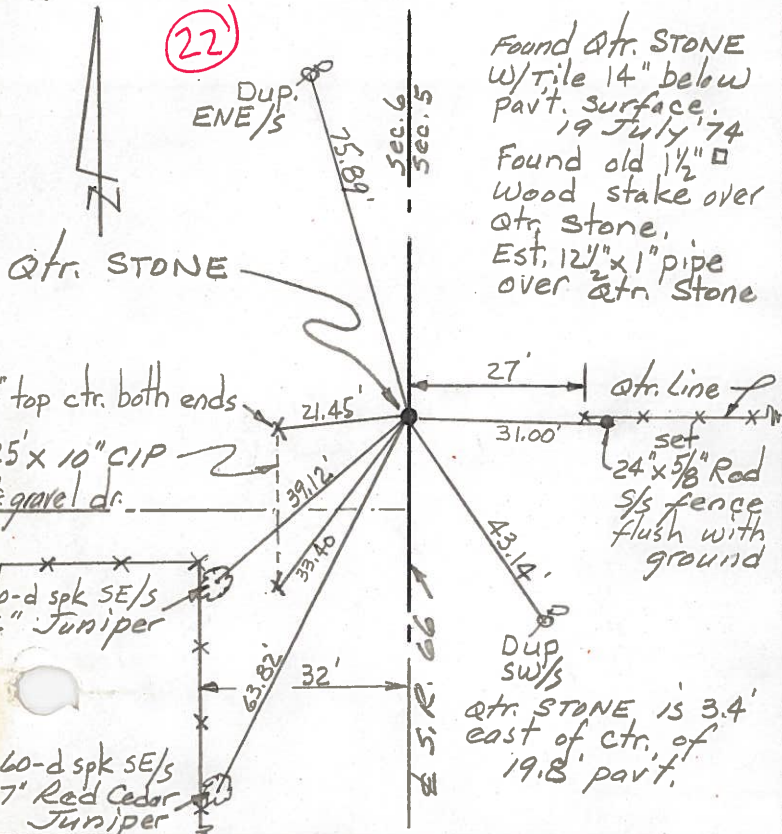
DESCRIPTION

JOB NO.

Qtr. Stone, Sec 5 & 6 T-10-S R-1-E Franklin Twp.

COR. Sec. 5 & 6 T-10-S R-1-E Franklin Twp.

COR. Sec. 31 & 32 T-9-S R-1-E Gorham Twp.



Qtr. STONE, Sec. 31 & 32 T-9-S R-1-E Gorham Twp.

COR. STONE, Sec. 29, 30, 31 & 32 T-9-S R-1-E Gorham Twp.

