

O.D.O.T. DISTRICT 2 SURVEY OFFICE (USE ONLY)

PERSONNEL

REFERENCE NO. 24

SHEET 41 OF 49

NOTES RHOADES

DATE 7/3/18

ROUTE SR 66

H.C. O'DONNELL

WEATHER CLOUDY

COUNTY FULTON

R.C. TRENKA

TEMP. 86°

TOWNSHIP FRANKLIN

HAGEMEYER

SECTION 5

DWG BY NIESE PID 102801

T 10 S R 5 E

TYPE MONUMENT MAG/WASHER

ON SURFACE - ~~BELOW~~ ON

OFFSET \varnothing PAVEMENT ON LT : RT

- TO - EDGE PAVEMENT

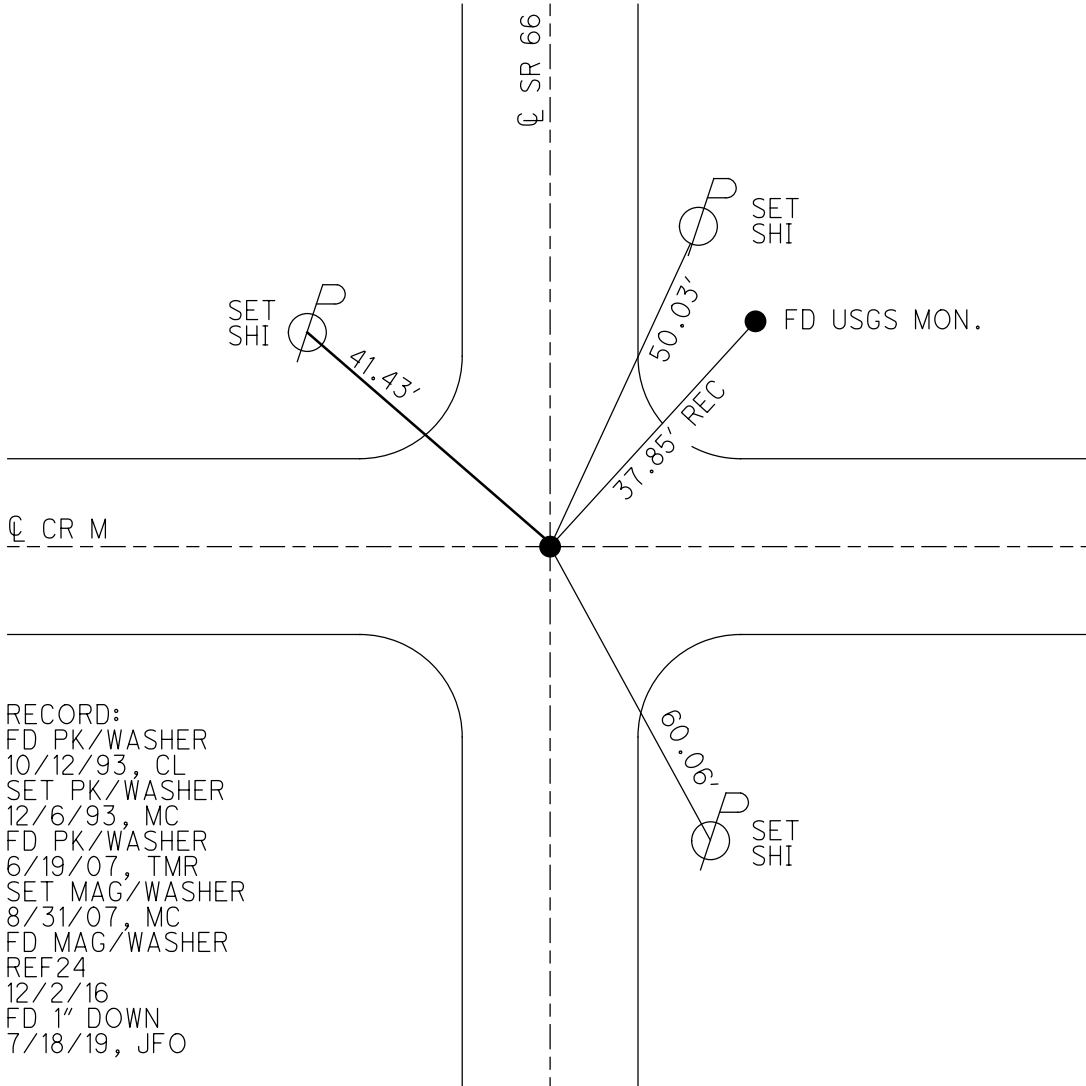
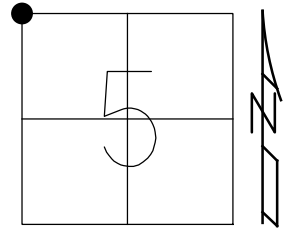
STATION: 592+75.1

HORZ. DATUM: NAD83(2011)

GEOID: 2012A

GRID: NORTHING: 723169.836

EASTING: 1469347.204



RECORD:
 FD PK/WASHER
 10/12/93, CL
 SET PK/WASHER
 12/6/93, MC
 FD PK/WASHER
 6/19/07, TMR
 SET MAG/WASHER
 8/31/07, MC
 FD MAG/WASHER
 REF24
 12/2/16
 FD 1" DOWN
 7/18/19, JFO

O.D.O.T. DISTRICT 2 SURVEY OFFICE (USE ONLY)

PERSONNEL _____

REFERENCE NO. 24

SHEET 6 OF 12

NOTES HOUDESHHELL

DATE 06-19-07

ROUTE SR 66

H.C. ROUSOS

WEATHER CLOUDY

COUNTY FULTON

R.C. HOUDESHHELL

TEMP. +80°

TOWNSHIP FRANKLIN

SECTION 5-6-31-32

T 10 S R 5 E

TYPE MONUMENT PK/WASHER

~~ON SURFACE~~ = BELOW ON SURFACE

~~LEFT~~ - CL PAV'T - ~~RIGHT~~ CL. PAVT.

TO EDGE PAVEMENT

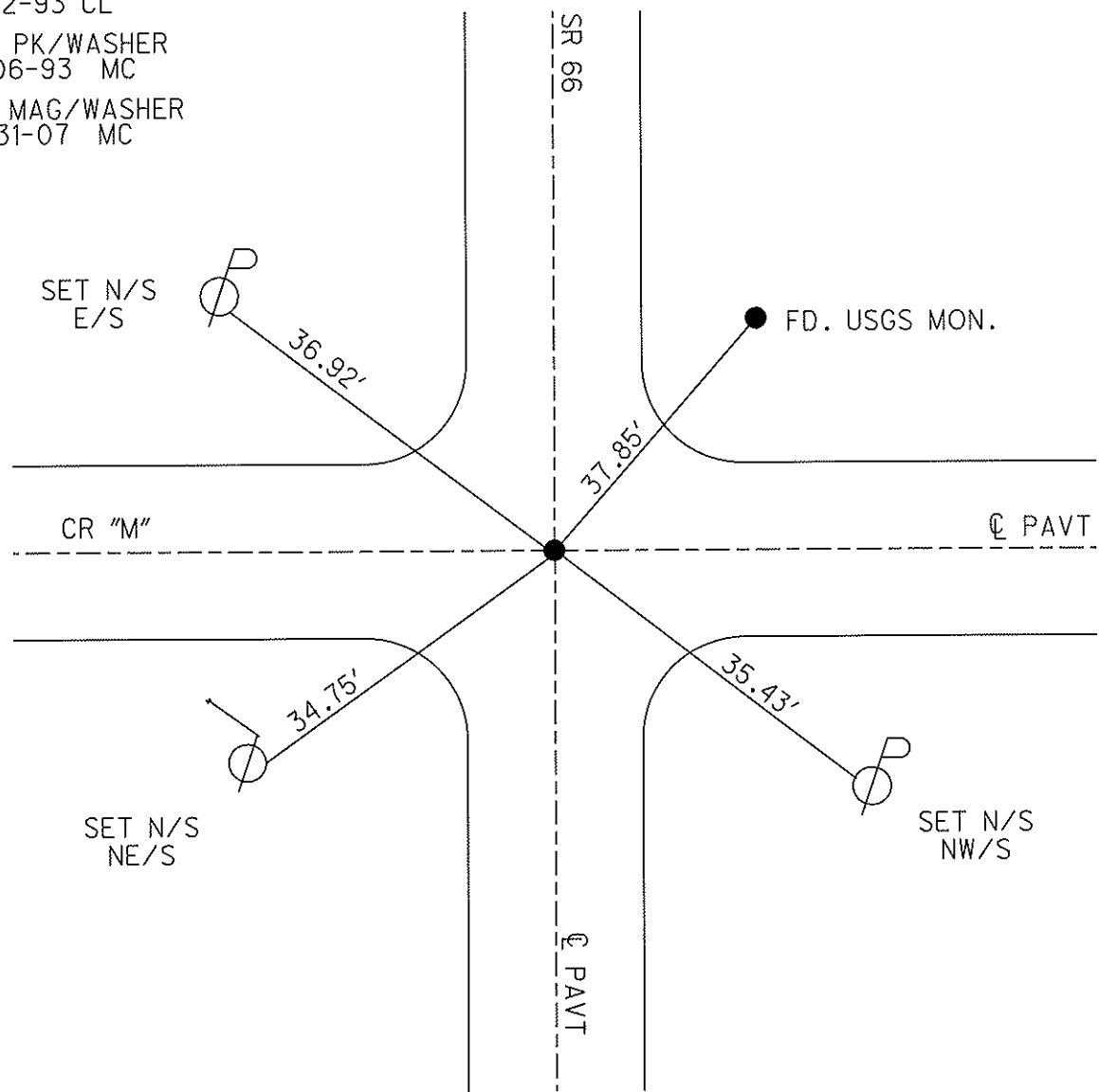
S.L.M. 594+88 (SV9)

31	32
6	5



Grid: Northing: 723169.849 Easting: 1469347.13

FD. PK/WASHER
10-12-93 CL
SET PK/WASHER
12-06-93 MC
SET MAG/WASHER
08-31-07 MC



O.D.O.T. DISTRICT 2 SURVEY OFFICE

PERSONNEL

REFERENCE NO. 24

SHEET 16 OF 22

NOTES J. CURTIS

H.C. Loehrke

DATE 10-12-93

ROUTE S.R. 66

R.G. Canterbury

WEATHER Cloudy

COUNTY FULTON

TEMP. +50

TOWNSHIP FRANKLIN

SECTION 5-6-31-32

T 10 S R 5 E

TYPE MONUMENT P.K. NAIL

Set PK/washer
12/6/93
MC

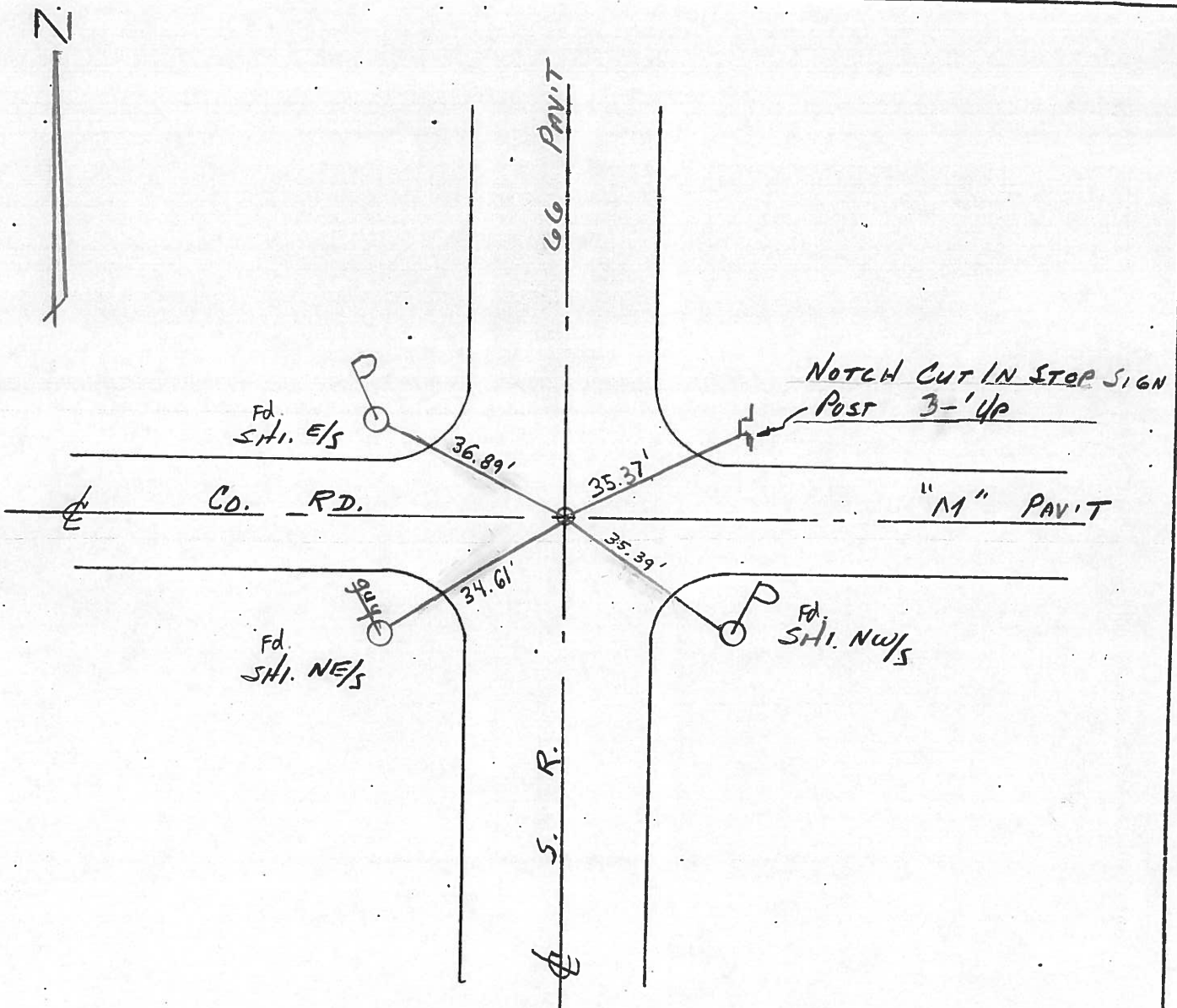
ON SURFACE - ~~BELOW~~ ON SURFACE

~~LEFT & PAV'T.~~ - RIGHT & PAV'T

TO EDGE PAVEMENT

S.L.M. 60.3 + 73

.31	32
6	5



O.D.O.T. DISTRICT 2 SURVEY OFFICE

PERSONNEL

REFERENCE NO. 24

SHEET 3 OF 3

NOTES 1. Stone

H.C. D. Curtis

DATE 10 Aug. 89

ROUTE SR#66

R.C. J. Hausholder

WEATHER Fair

COUNTY Fulton

P. Del Banc

TEMP. 74°

TOWNSHIP Franklin

SECTION 5-6-31-32

T ___ R ___

TYPE MONUMENT PK Nail

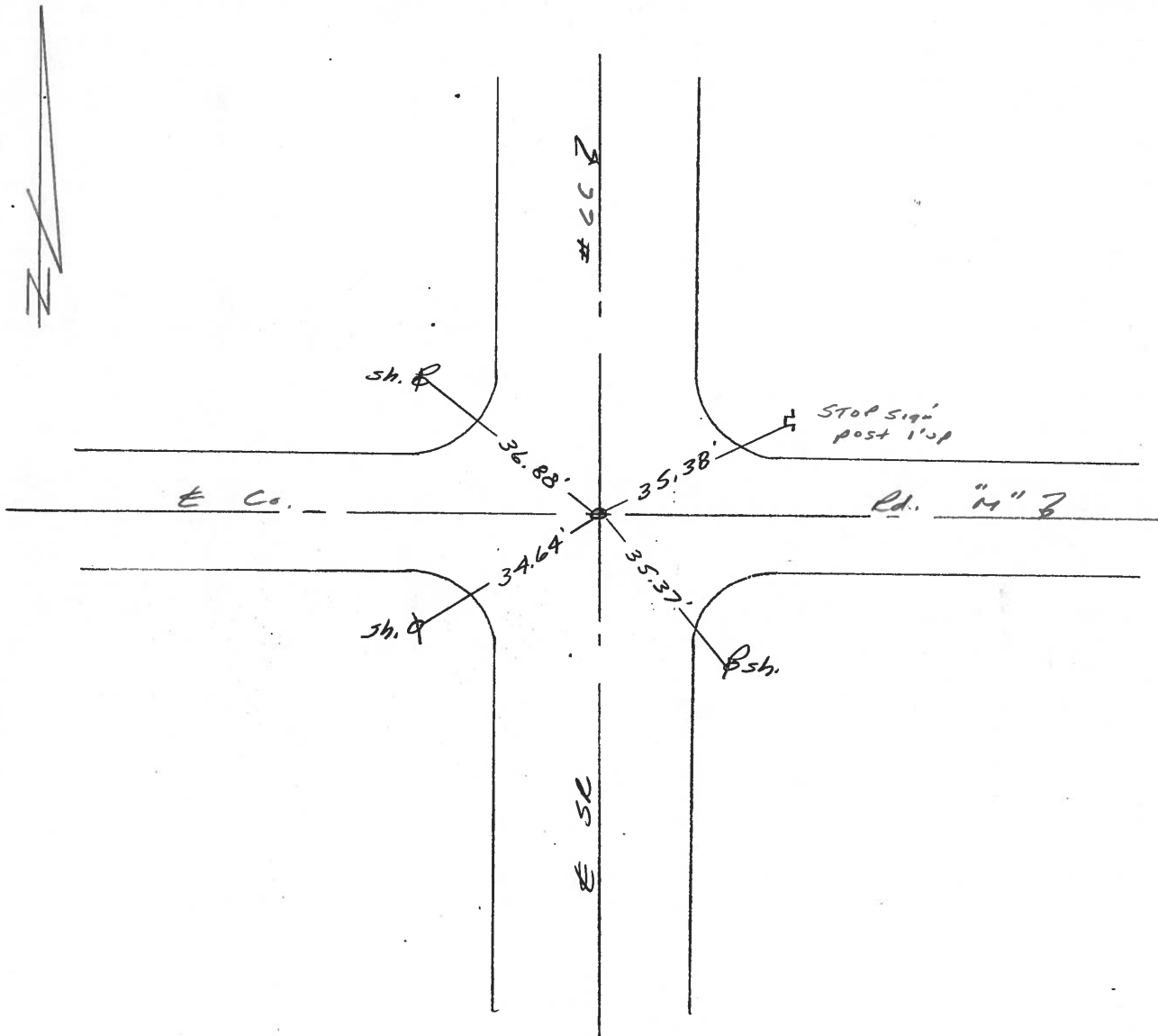
ON SURFACE - BELOW Surface

LEFT - \odot PAW'T. - RIGHT

TO EDGE PAVEMENT

S.L.M. 603+70.20 (Meas.)

31	32
6	5



County Fulton S.R. 66

Date 8 Aug. 89

Township Franklin

Weather Muggy

Section 5

Temp. 80°

T N, R E

Personnel J. Stone

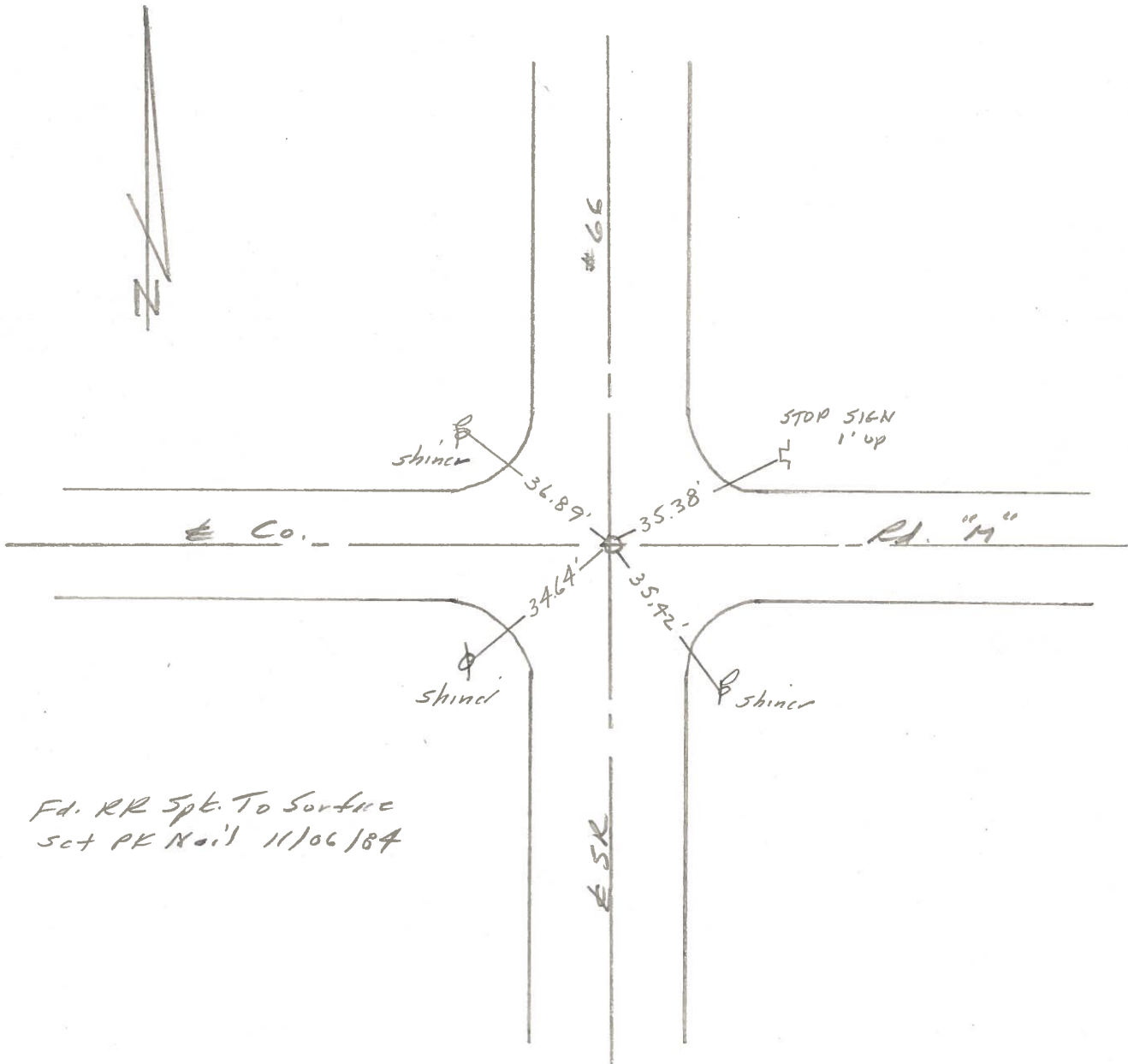
P. Newson

R. Michalek

31	32
6	5



REF. NO. 24



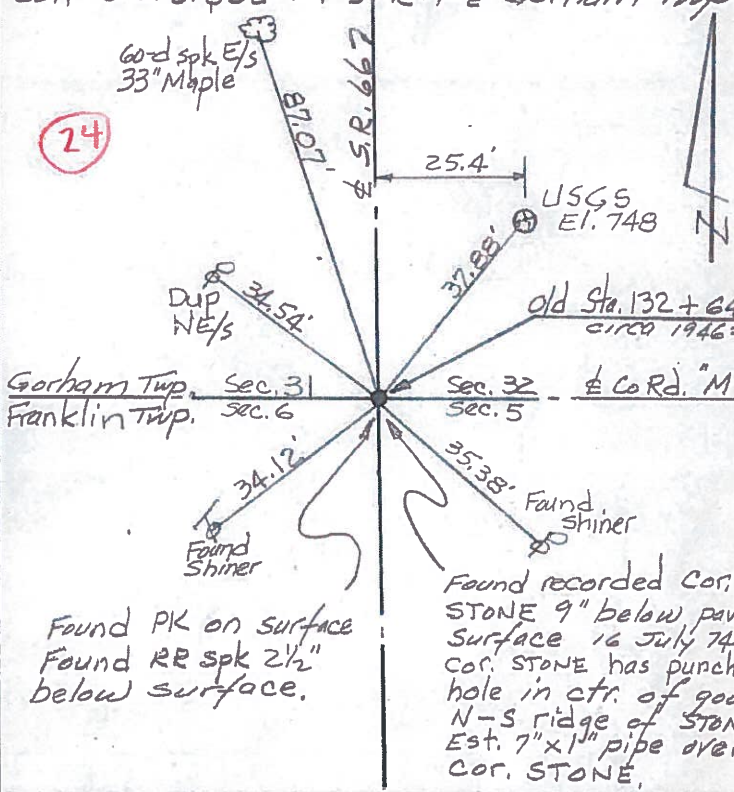
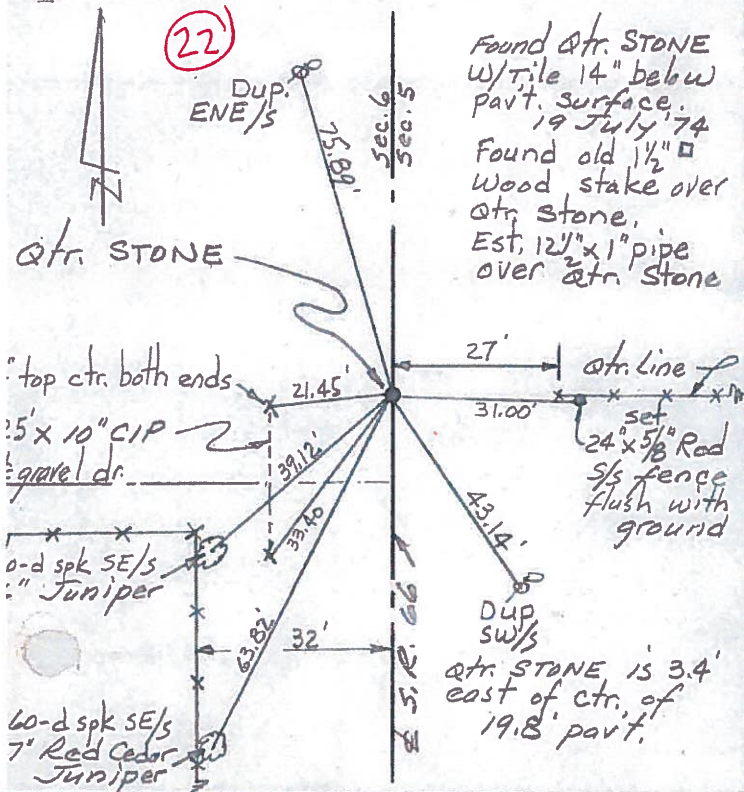
PERSONNEL	TITLE	PERSONNEL	TITLE
Red Beach			
W. Knappe			
D. Boyle			
J. Bogdonos			

COUNTY Fulton DATE July 1974
 S. R. 66 WEATHER _____
 SEC. Franklin - Gorham Twp. TEMP _____

CONTROL POINTS

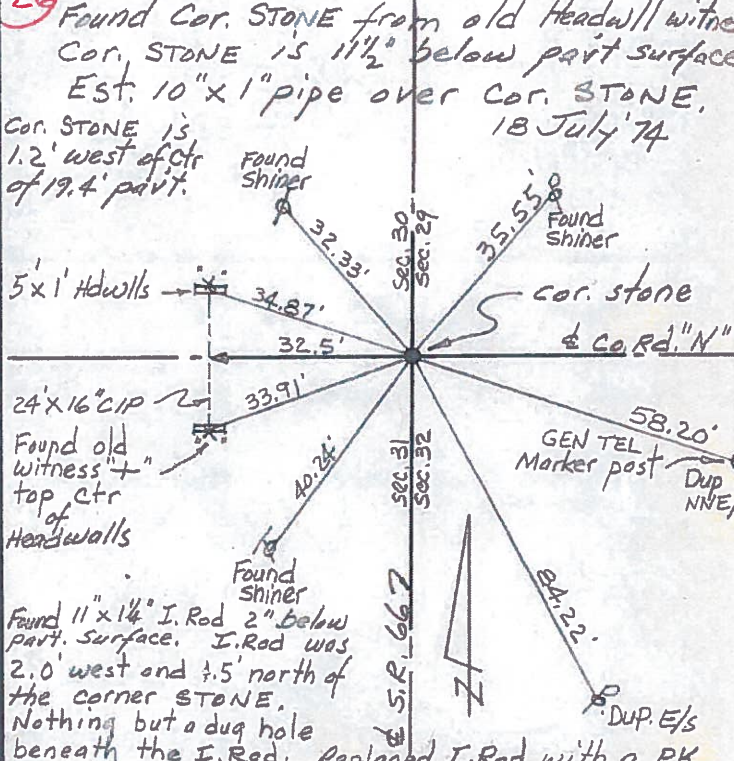
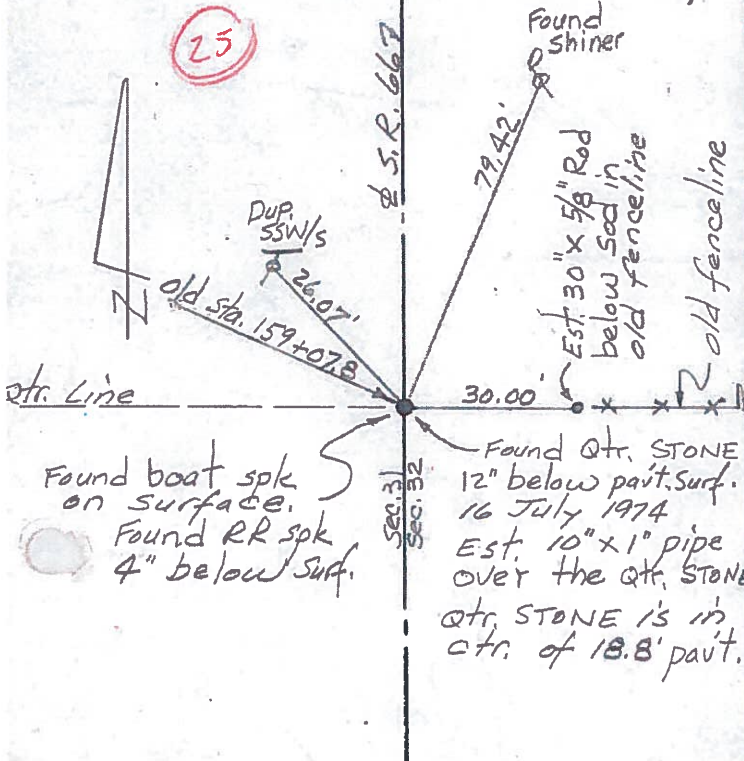
DESCRIPTION Qtr. Stone, Sec 5 & 6 T-10-S R-1-E Franklin Twp.

JOB NO. Cor. Sec. 5 & 6 T-10-S R-1-E Franklin Twp.
Cor. Sec. 31 & 32 T-9-S R-1-E Gorham Twp.



DESCRIPTION Qtr. Stone, Sec. 31 & 32 T-9-S R-1-E Gorham Twp.

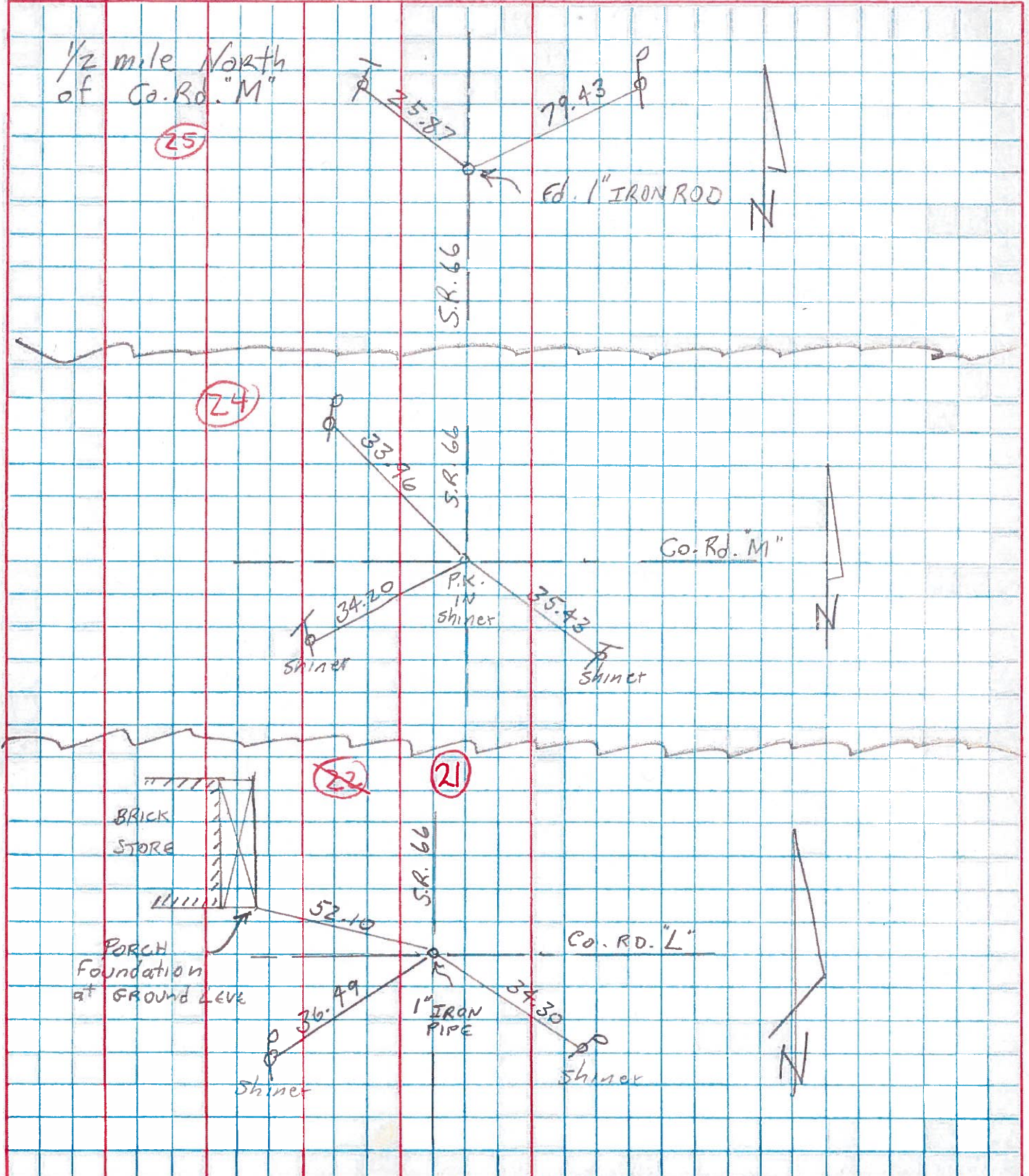
DESCRIPTION Cor. Stone, Sec. 29, 30, 31 & 32 T-9-S R-1-E Gorham Twp.



PERSONNEL	TITLE	PERSONNEL	TITLE
Tomsic			
Neuser			
Vanyo			
Boyle			

COUNTY Fulton DATE July-30-73
 S. R. 66 WEATHER clear
 SEC. _____ TEMP. _____

DESCRIPTION Reference LEFT CENTER LINE RIGHT JOB NO. 024610



PERSONNEL TITLE PERSONNEL TITLE

Red Beach

COUNTY FULTON

DATE June-July 74

W. Knape

S. R. 66

WEATHER

D. Boyle

SEC. Franklin-Gorham

TEMP.

J. Bagdonas

DESCRIPTION

ALIGNMENT

JOB NO.

± US 20 & Main St. 7
Qtr. Line

± US 20 & Main St. 7
Qtr. Line

FAYETTE

FAYETTE

29

± Twp. Rd. "R"

± Twp. Rd. "R"

30

27

29

± Co. Rd. "N" 7

26

31

25

32

GORHAM
FRANKLIN

24

± Co. Rd. "M" 7

GORHAM
FRANKLIN

T-9-S
S

