

O.D.O.T. DISTRICT 2 SURVEY OFFICE (USE ONLY)

PERSONNEL

REFERENCE NO. 26

SHEET 43 OF 49

NOTES RHOADES

DATE 7/6/18

ROUTE SR 66

H.C. O'DONNELL

WEATHER SUNNY

COUNTY FULTON

R.C. TRENKA

TEMP. 74°

TOWNSHIP GORHAM

SECTION 32

DWG BY NIESE PID 102801

T 9 S R 5 E

TYPE MONUMENT MAG/WASHER

ON SURFACE - ~~BELOW~~ ON

OFFSET 1.0' LT : ~~RT~~

- TO - EDGE PAVEMENT

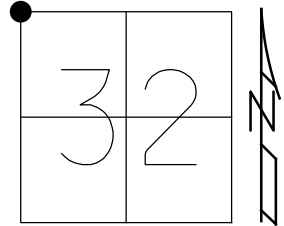
STATION: 645+49.9

HORZ. DATUM: NAD83(2011)

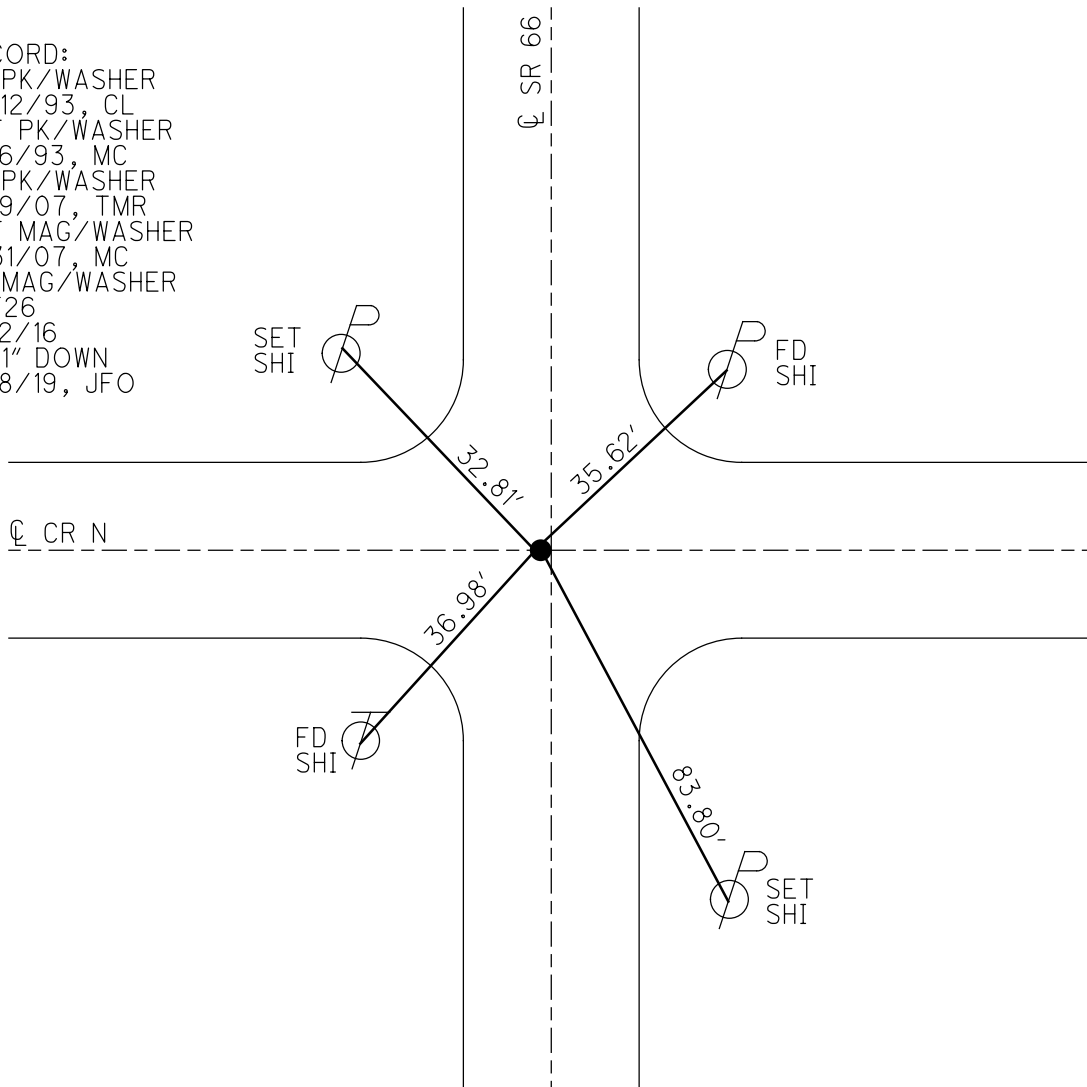
GEOID: 2012A

GRID: NORTHING: 728444.548

EASTING: 1469322.586



RECORD:
 FD PK/WASHER
 10/12/93, CL
 SET PK/WASHER
 12/6/93, MC
 FD PK/WASHER
 6/19/07, TMR
 SET MAG/WASHER
 8/31/07, MC
 FD MAG/WASHER
 REF26
 12/2/16
 FD 1" DOWN
 7/18/19, JFO



O.D.O.T. DISTRICT 2 SURVEY OFFICE (USE ONLY)

PERSONNEL

REFERENCE NO. 26

SHEET 8 OF 12

NOTES HOUDESHHELL

DATE 06-19-07

ROUTE SR 66

H.C. ROUSOS

WEATHER CLOUDY

COUNTY FULTON

R.C. HOUDESHHELL

TEMP. +80°

TOWNSHIP GORHAM

SECTION 29-30-31-32

T 9 S R 5 E

TYPE MONUMENT PK/WASHER

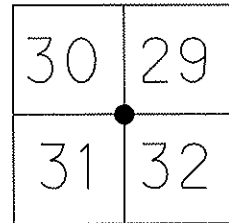
ON SURFACE - ~~BELOW~~ ON SURFACE

LEFT - ~~C PAVT~~ - RIGHT 1.0' LT.

TO EDGE PAVEMENT

S.L.M. 647+59 (SV11)

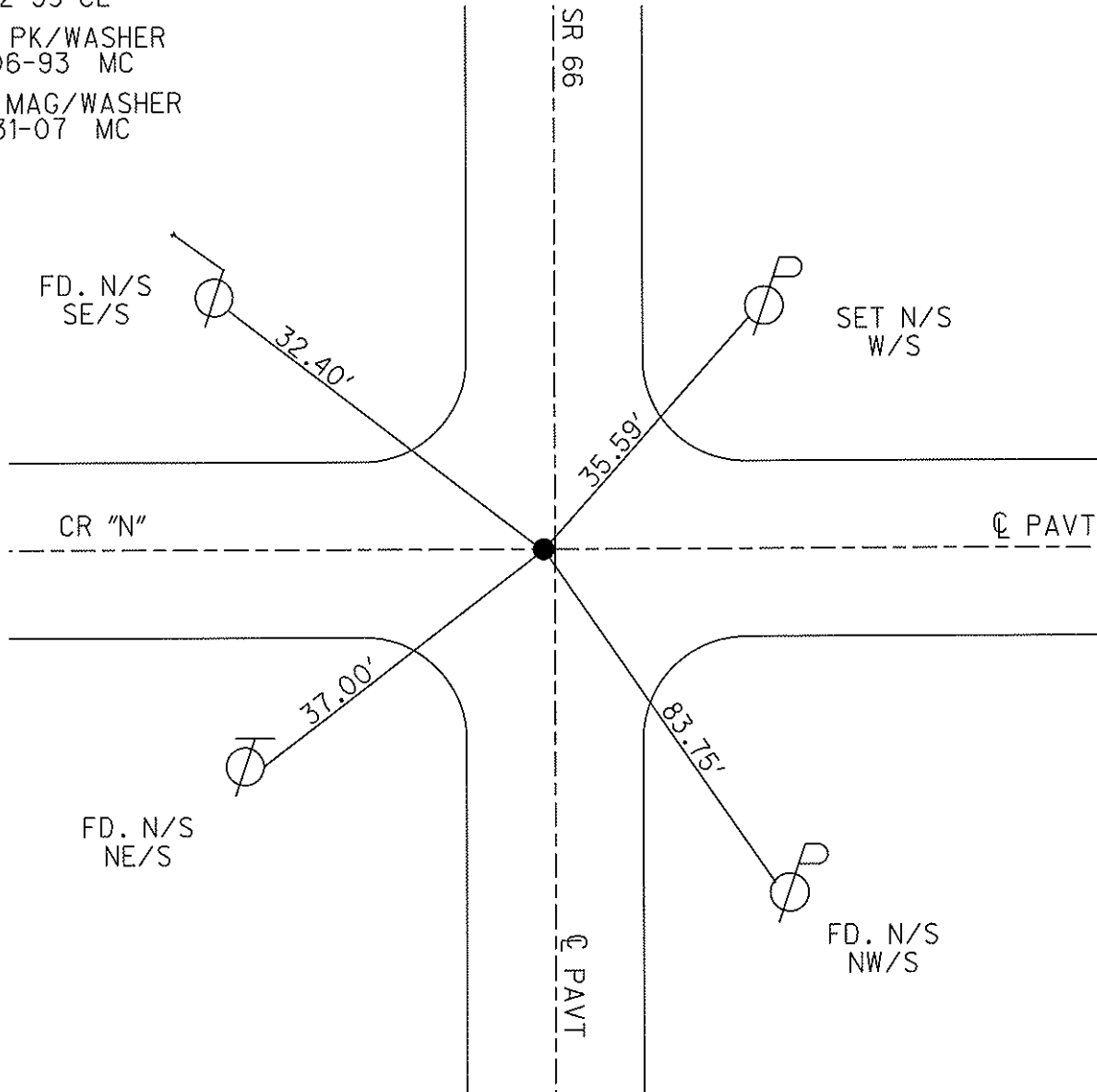
Grid: Northing: 728444.523 Easting: 1469322.508



FD. PK/WASHER
10-12-93 CL

SET PK/WASHER
12-06-93 MC

SET MAG/WASHER
08-31-07 MC



O.D.O.T. DISTRICT 2 SURVEY OFFICE

PERSONNEL _____ REFERENCE NO. 26 SHEET 18 OF 22

NOTES D. CURTIS

H.C. Loehrke

R.C. Canterbury

DATE 10-12-93

WEATHER Cloudy

TEMP. +50

ROUTE S.R. 166

COUNTY FULTON

TOWNSHIP GORDON

SECTION 29

T 9 S R 5 E

TYPE MONUMENT P. K. NAIL

ON SURFACE - ~~BELOW~~ ON SURFACE

LEFT - ~~PAV'T.~~ RIGHT 1" LEFT

TO LT. EDGE PAVEMENT

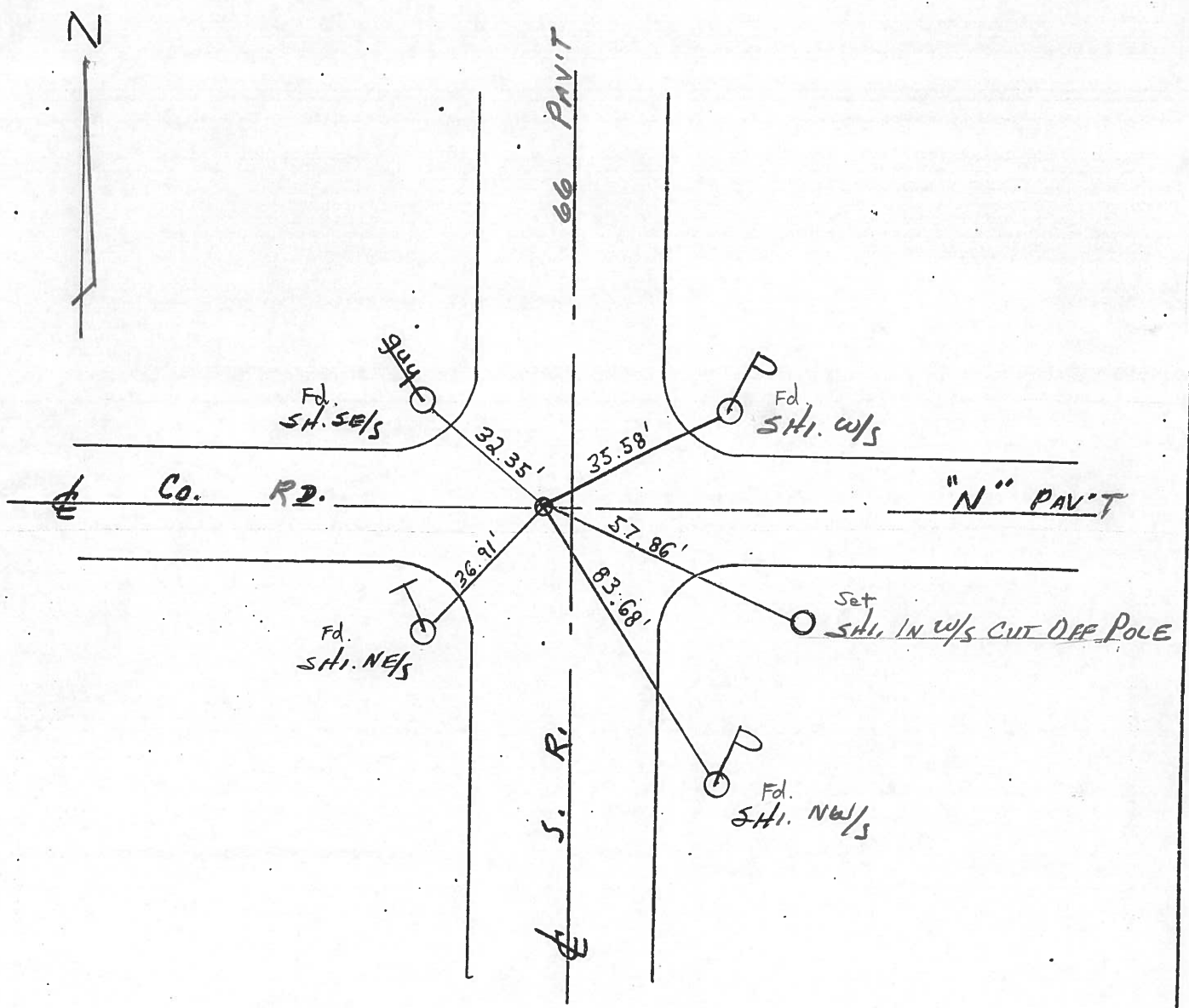
S.L.M. 656 + 57

Set PK/washer

12/8/93

MC

.30	29
31	32



County Fulton S.R. 66

Township Gorbans

Section 29

T_N, R_E

Personnel I. Stone

P. Neuser

R. Michalski

Date 8 Aug. 84

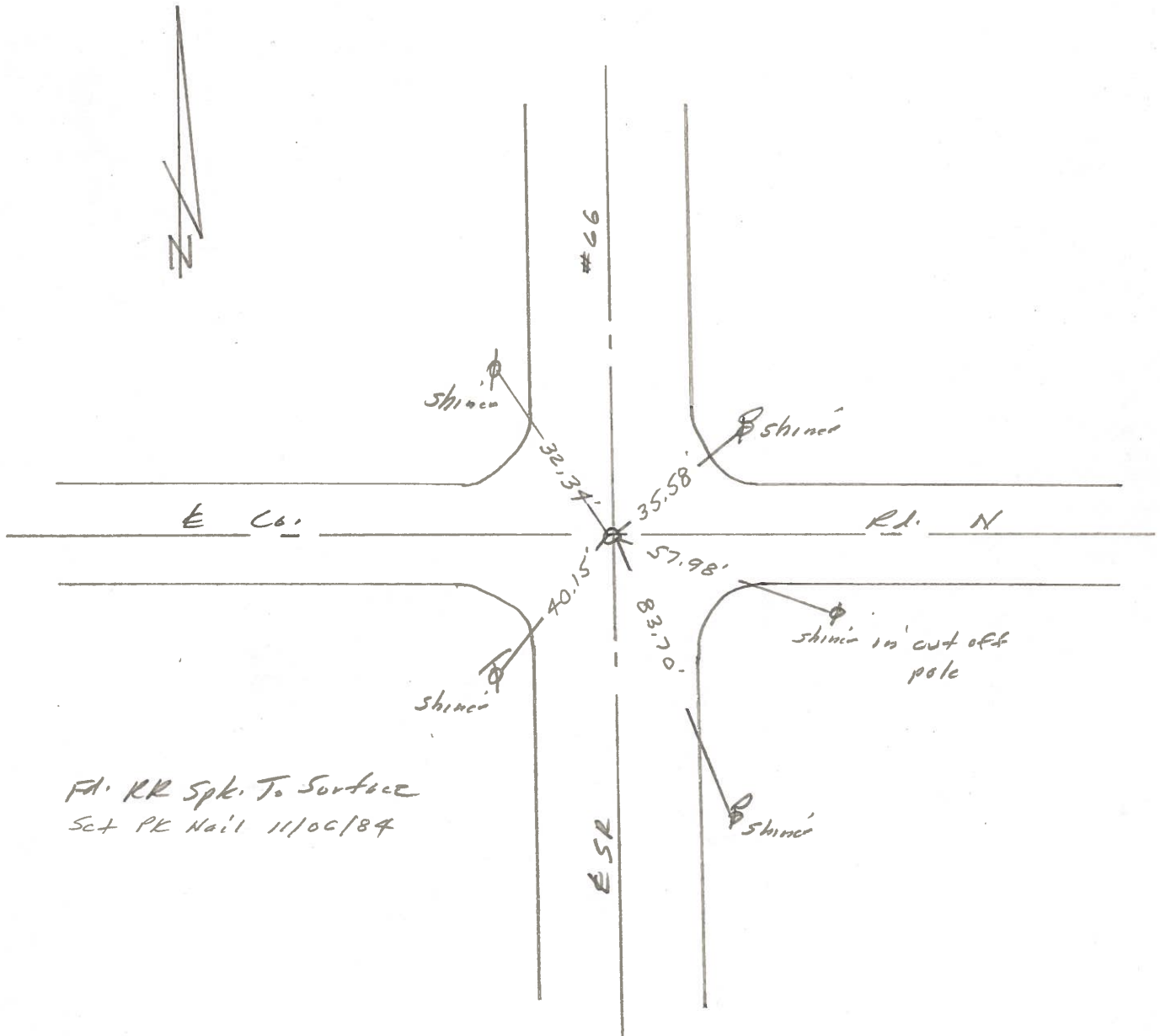
Weather Cloudy

Temp. 75°

30	29
31	32



REF. NO. 26



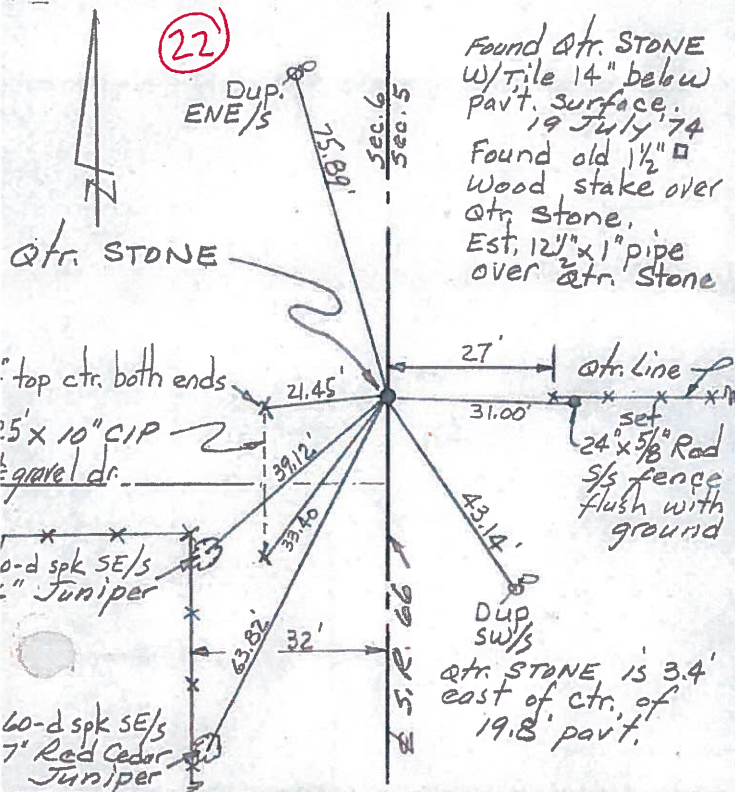
Fd. RR Spk. To Surface
Set PK Nail 11/06/84

PERSONNEL	TITLE	PERSONNEL	TITLE
Red Beach			
W. Knape			
D. Boyle			
J. Bagdonas			

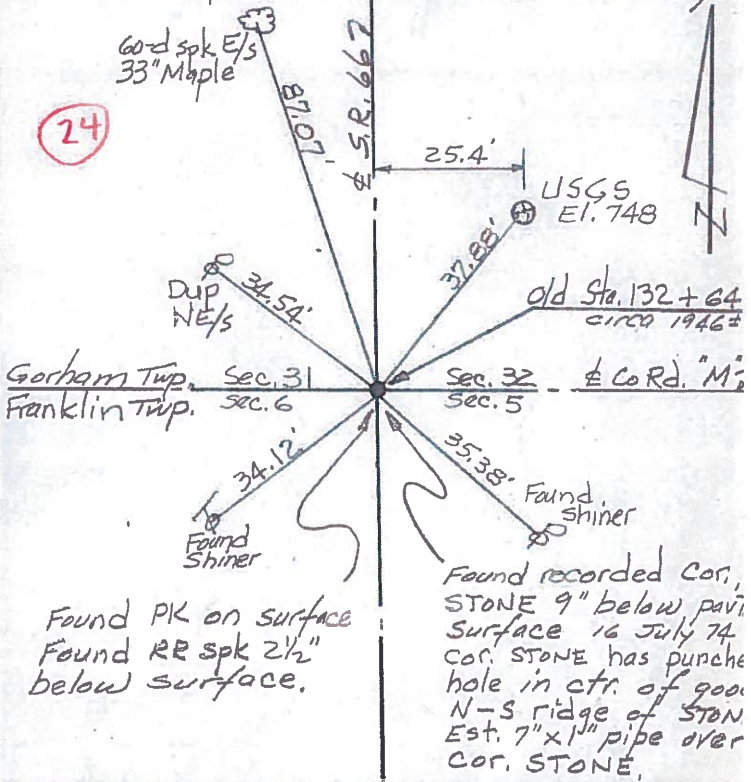
COUNTY Fulton DATE July 1974
 S. R. 66 WEATHER _____
 SEC. Franklin - Gorham Twp. TEMP _____

CONTROL POINTS

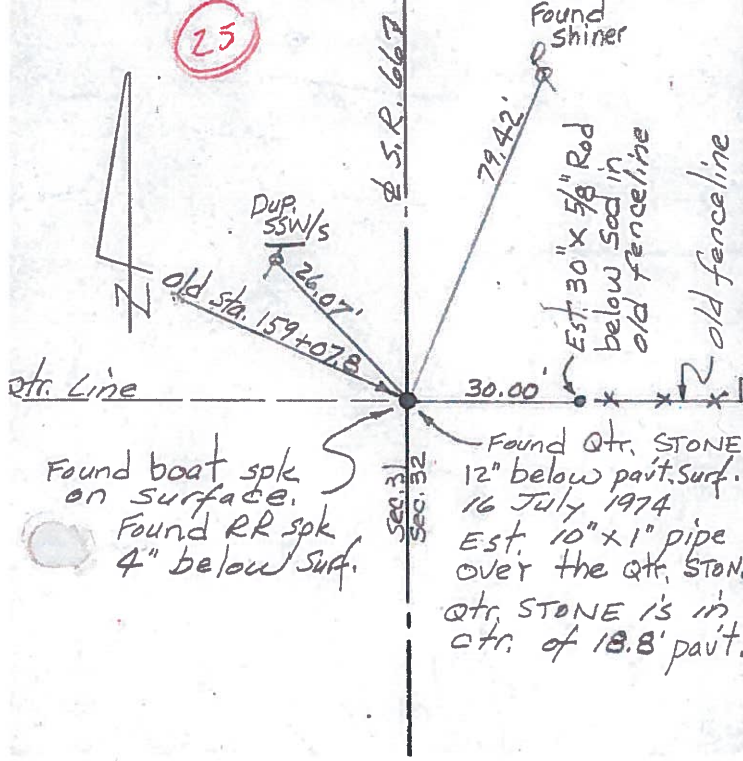
Qtr. Stone, Sec 5 & 6 T-10-S R-1-E Franklin Twp.



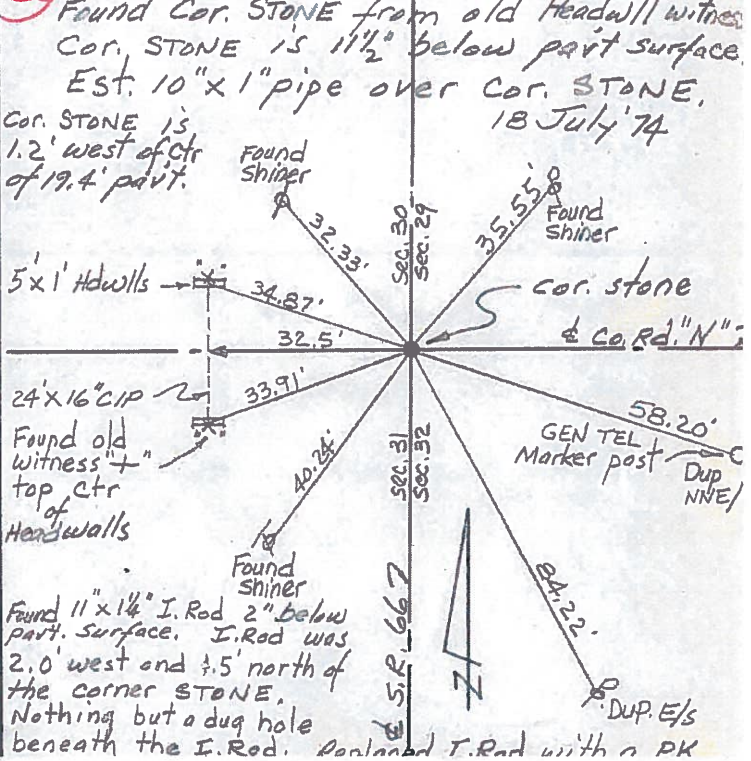
Cor. Sec. 5 & 6 T-10-S R-1-E Franklin Twp.
Cor. Sec. 31 & 32 T-9-S R-1-E Gorham Twp.



Qtr. Stone, Sec. 31 & 32 T-9-S R-1-E Gorham Twp.



Cor. Stone, Sec. 29, 30, 31 & 32 T-9-S R-1-E Gorham Twp.



PERSONNEL TITLE PERSONNEL TITLE

Red Beach

COUNTY FULTON

DATE June-July 74

W. Knape

S. R. 66

WEATHER

D. Boyle

SEC. Franklin-Gorham

TEMP.

J. Bagdonas

DESCRIPTION ALIGNMENT

JOB NO.

± US 20 & Main St. 7
Qtr. Line

± US 20 & Main St. 7
Qtr. Line

FAYETTE

FAYETTE

29

± Twp. Rd. "R" 7

± Twp. Rd. "R" 7

30

27

29

± Co. Rd. "N" 7

26

179° 32.7'

31

25

32

180° 51.5'

T-9-S
S

GORHAM
FRANKLIN

24

180° 32.1'

± Co. Rd. "M" 7

GORHAM
FRANKLIN

1339.33'
2648.04'
2655.43'
2645.94'
2636.41'
2639.04'

2673.14

2587.76

71.32'

91° 01.0'

90° 22.4'

180° 07.2'

179° 55.5'

± Fayette St. 7

± S. R. 66 7

± Fayette St. 7

± Fayette St. 7

± Fayette St. 7

± Fayette St. 7

± Fayette St. 7

1333.78'

1330.5'

1330.5'

1330.5'

1330.5'

1330.5'

1330.5'

1330.5'

1330.5'

1330.5'

1330.5'