

O.D.O.T. DISTRICT 2 SURVEY OFFICE (USE ONLY)

PERSONNEL

REFERENCE NO. 27 A

SHEET 45 OF 49

NOTES RHOADES

DATE 7/6/18

ROUTE SR 66

H.C. O'DONNELL

WEATHER SUNNY

COUNTY FULTON

R.C. TRENKA

TEMP. 74°

TOWNSHIP GORHAM

DWG BY NIESE

PID 102801

SECTION 29

T 9 S R 5 E

TYPE MONUMENT MAG/WASHER

ON SURFACE - ~~BELOW~~ ON

OFFSET 0 PAVEMENT ON LT : RT

10.3' TO RT EDGE PAVEMENT

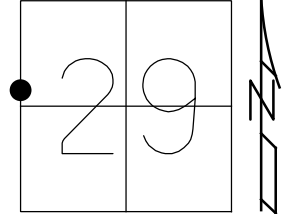
STATION: 687+32.2

HORIZ.DATUM: NAD83(2011)

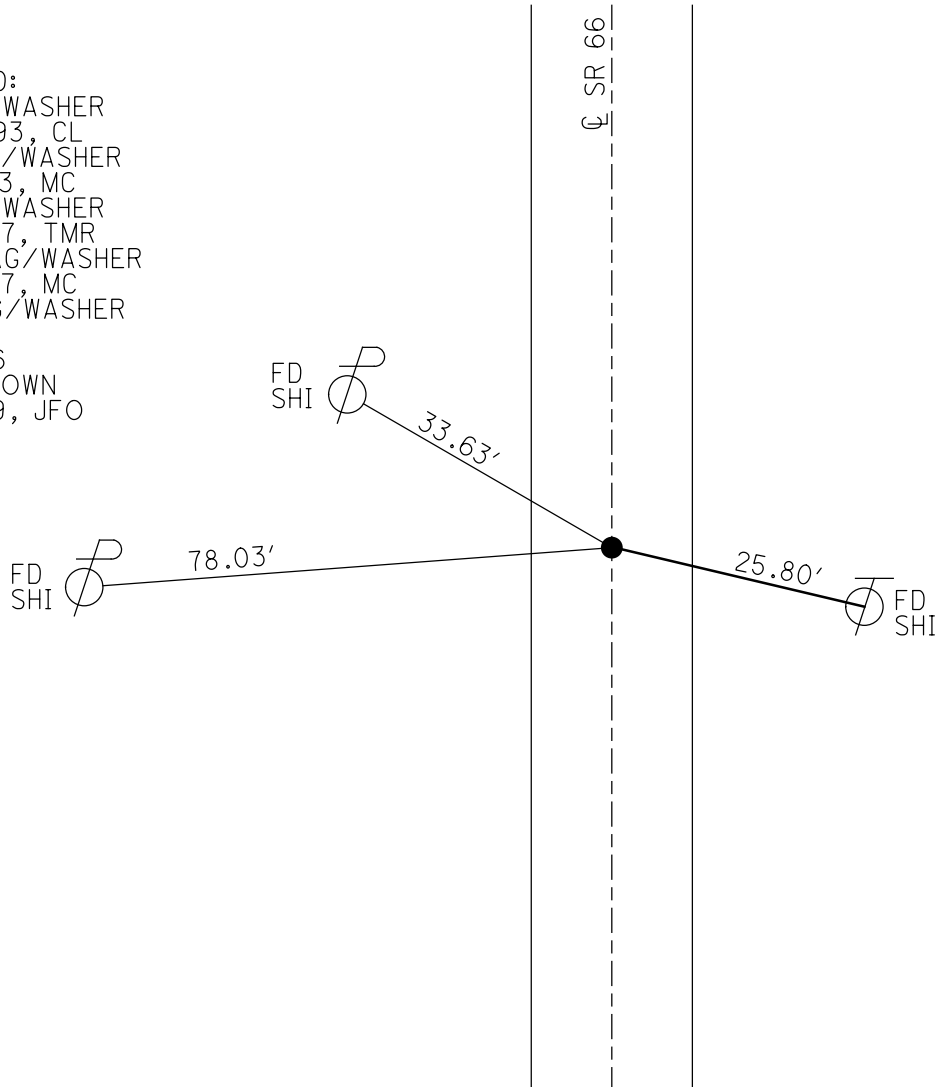
GEOID: 2012A

GRID: NORTHING: 732417.251

EASTING: 1469306.472



RECORD:
FD PK/WASHER
10/12/93, CL
SET PK/WASHER
12/8/93, MC
FD PK/WASHER
6/19/07, TMR
SET MAG/WASHER
8/31/07, MC
FD MAG/WASHER
REFA27
12/2/16
FD 1" DOWN
7/18/19, JFO



O.D.O.T. DISTRICT 2 SURVEY OFFICE (USE ONLY)

PERSONNEL _____

REFERENCE NO. 27A

SHEET 10 OF 12

NOTES HOUDSHELL

DATE 06-19-07

ROUTE SR 66

H.C. ROUSOS

WEATHER CLOUDY

COUNTY FULTON

R.C. HOUDSHELL

TEMP. +80°

TOWNSHIP GORHAM

SECTION 29

T 9 S R 5 E

TYPE MONUMENT PK/WASHER

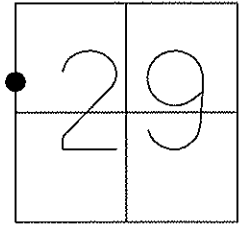
ON SURFACE - ~~BELOW~~ ON SURFACE

~~LEFT~~ - CL PAV'T - ~~RIGHT~~ ON CL.

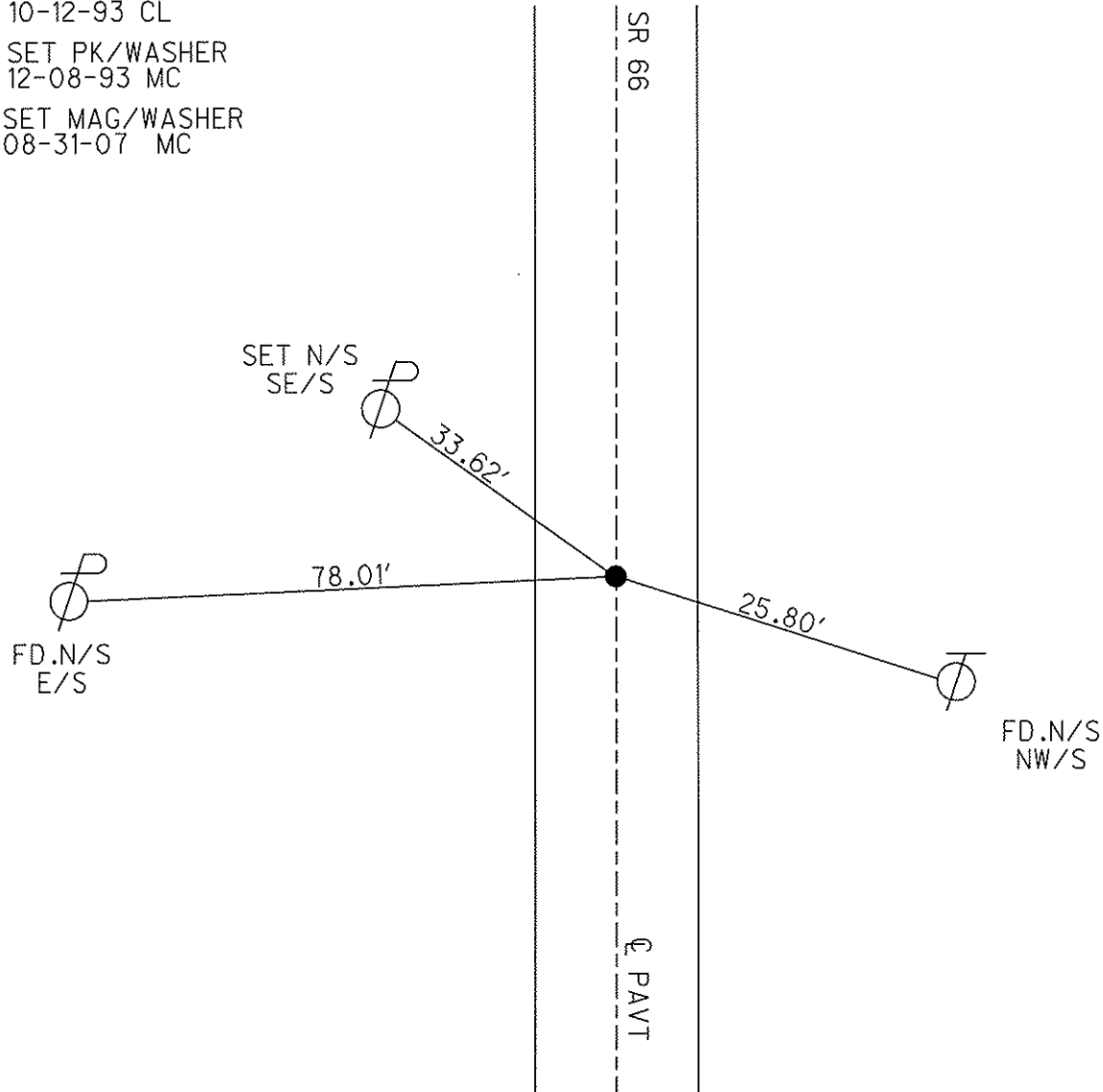
10.3' TO RT. EDGE PAVEMENT

S.L.M. 687+29 (SV13)

Grid: Northing: 732417.176 Easting: 1469306.395



FD. PK/WASHER
10-12-93 CL
SET PK/WASHER
12-08-93 MC
SET MAG/WASHER
08-31-07 MC



O.D.O.T. DISTRICT 2 SURVEY OFFICE

PERSONNEL

REFERENCE NO. 27A

SHEET 19B OF 22

NOTES Loehrke

H.C. Loehrke

R.C. Canterbury

DATE 10-12-93

WEATHER Cloudy

TEMP. +50

ROUTE S.R. 66

COUNTY Fulton

TOWNSHIP Gorham

SECTION 29

T 9 S R 5 E

TYPE MONUMENT PK Nail

Set PK/washer

ON SURFACE - ~~BELOW~~ Yes

12/8/93

~~LEFT - C~~ PAV'T. - ~~RIGHT~~ Yes

MC

10.3' TO R+ EDGE PAVEMENT

S.L.M. 696 + 27

